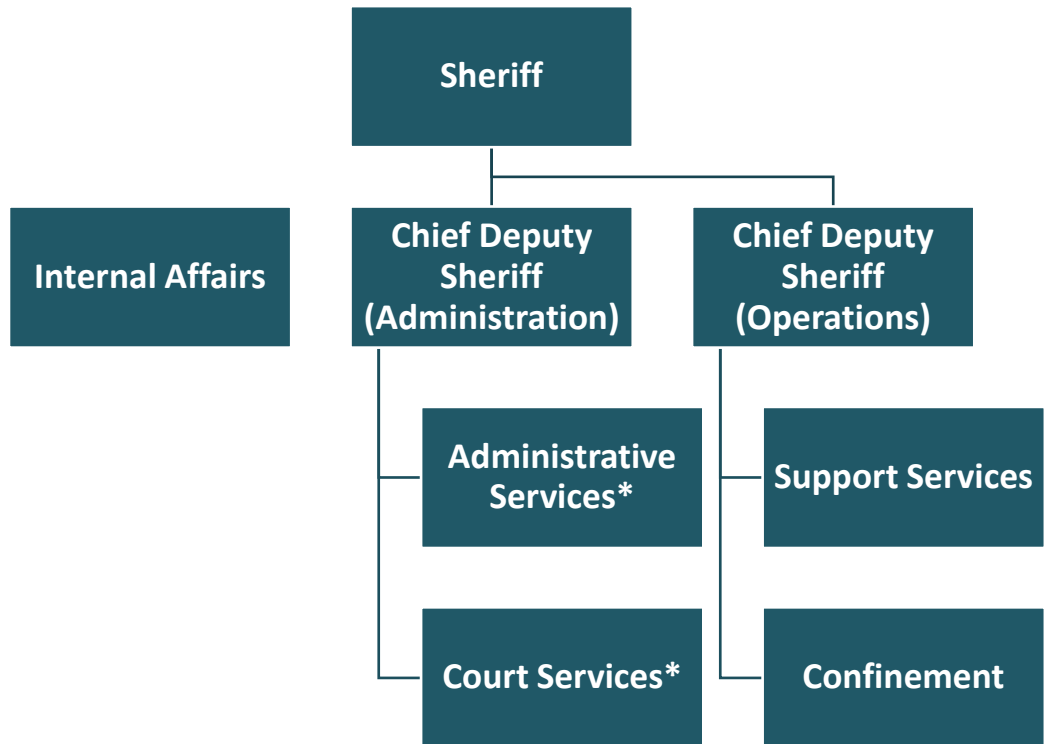


Office of the Sheriff

Organizational Chart



*Judicial Administration Program Area of the Office of the Sheriff

Information on the entire Office of the Sheriff, including the Judicial Administration Program Area, can be found in the Public Safety section of Volume 1.

Budget and Staff Resources

Judicial Administration Program Area Summary

Category	FY 2023 Actual	FY 2024 Adopted	FY 2024 Revised	FY 2025 Advertised	FY 2025 Adopted
FUNDING					
Expenditures:					
Personnel Services	\$19,162,898	\$19,352,207	\$19,352,207	\$20,748,893	\$20,748,893
Operating Expenses	5,538,225	4,237,870	5,508,472	4,289,708	4,261,443
Capital Equipment	38,486	0	0	0	0
Total Expenditures	\$24,739,609	\$23,590,077	\$24,860,679	\$25,038,601	\$25,010,336
Total Income	\$4,349,245	\$4,315,763	\$4,408,573	\$4,483,039	\$4,584,302
NET COST TO THE COUNTY	\$20,390,364	\$19,274,314	\$20,452,106	\$20,555,562	\$20,426,034
AUTHORIZED POSITIONS/FULL-TIME EQUIVALENT (FTE)					
Regular	166 / 165.5	166 / 165.5	173 / 172.5	169 / 168.5	174 / 173.5
Exempt	4 / 4	4 / 4	4 / 4	4 / 4	4 / 4
State	2 / 2	2 / 2	2 / 2	2 / 2	2 / 2