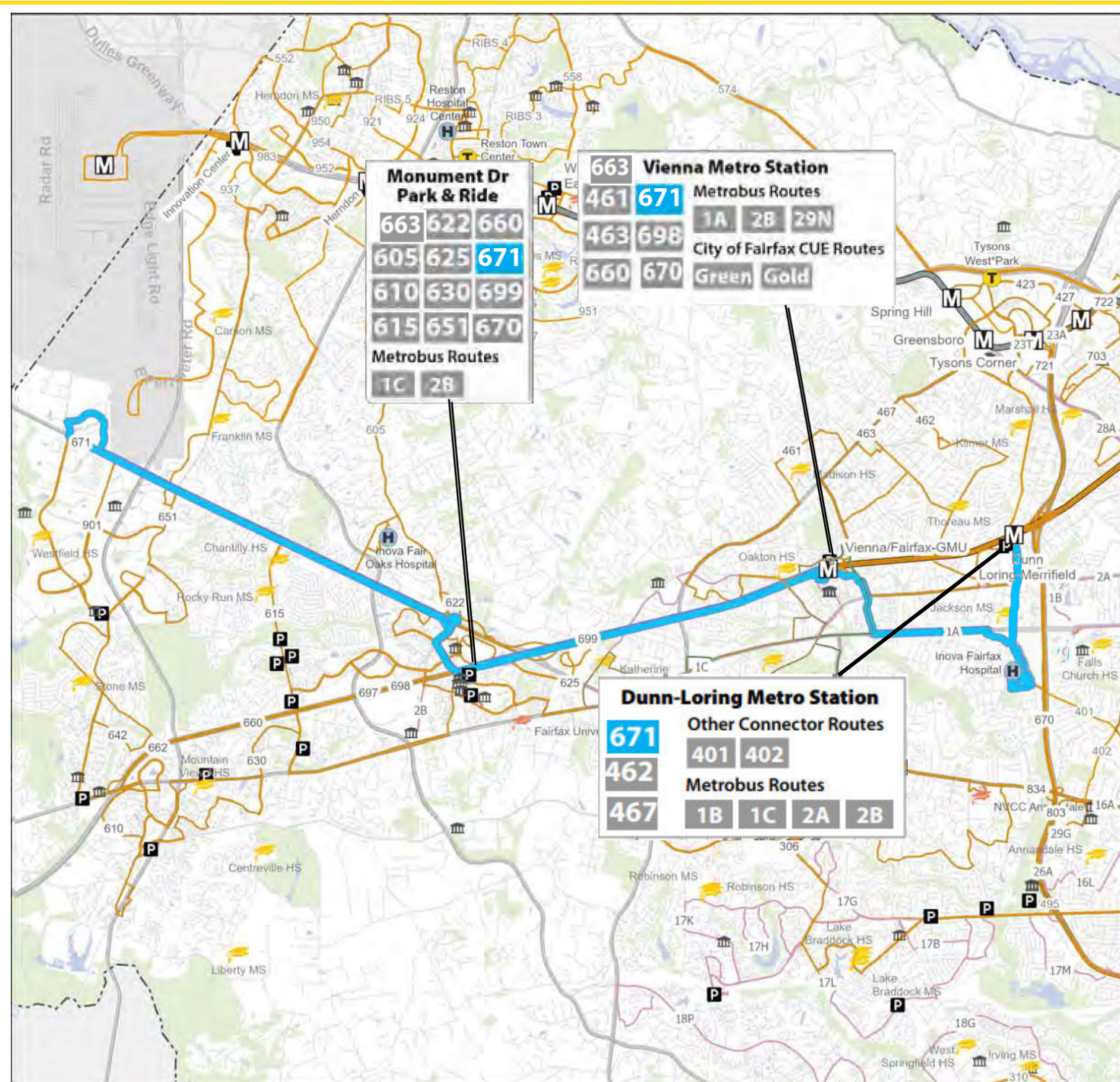


ROUTE 671: CHANTILLY - DUNN LORING METRO STATION



Preferred Plan
671

Existing Service
 Segment Served by Other Route(s)
 Eliminated Segment
 Fairfax Connector Routes
 Metrobus Routes

Transit Facilities
 Metrorail Station
 Metrorail Station (New)
 Transit Center
 Park & Ride

Points of Interest
 Hospital
 Government/Community/Human Services Center
 Middle School/High School
 College/University

Legend:
 Blue Line
 Green Line
 Orange Line
 Red Line
 Silver Line
 Yellow Line

Scale: 0 0.5 1 Miles

| | | |
|-----------------|----------------------------|---|
| OVERVIEW | CLASS | Cross-County Connector |
| | DIRECTIONS | Eastbound/Westbound |
| | VIA | Route 50, future Monument Dr. Park & Ride, I-66, Fairfax Hospital, and Vienna Metro Station |
| | TRANSFERS AVAILABLE | Connector 401, 402, 461, 462, 463, 467, 605, 610, 615, 622, 625, 630, 642, 651, 660, 663, 670, 671, 698, 699, 901; Metrorail Orange Line; Metrobus 1A, 1B, 1C, 2A, 2B, 29N; CUE Green, Gold |
| | IMPROVEMENT(S) | New peak service from Chantilly to Dunn Loring Metro station; via Fairfax Hospital and Vienna Metro station |

| | | WEEKDAY | SATURDAY | SUNDAY | |
|-------------------------|---------------------------|----------------------|---|------------|------------|
| LEVEL OF SERVICE | PROPOSED ROUTE 671 | SERVICE HOURS | 5:20 AM - 9:59 AM — 2:57 PM - 7:41 PM | No Service | No Service |
| | | FREQUENCY | RUSH | 30 mins | No Service |
| NON-RUSH | No Service | | | | |

FACILITIES SERVED WITHIN A QUARTER MILE

| | | | |
|------------------------------|---------------------------|--------------------|--|
| 1 HIGH/MIDDLE SCHOOLS | 0 TRANSIT CENTERS | 0 COLLEGES | 4 PARK & RIDE LOTS |
| 2 METRORAIL STATIONS | 5 ACTIVITY CENTERS | 1 HOSPITALS | 8 GOVERNMENT/COMMUNITY / HUMAN SERVICES CENTERS |