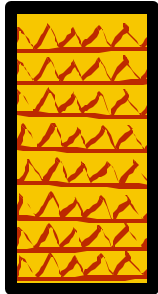


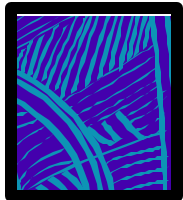
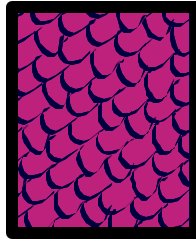
# Community Strengths



100% Feel it is important for their children to graduate from high school.

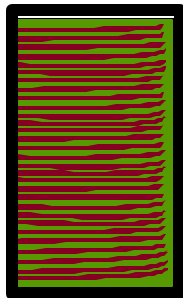
100% Feel it is important for their children to attend college.

85.9% Know most of their childrens friends very well.



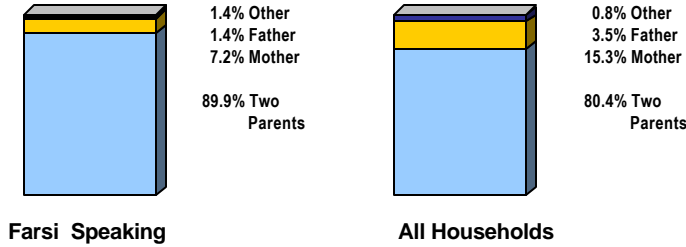
99.3% Believe the people of the United States make their family feel welcome.

94.1% Feel Fairfax County is their home.



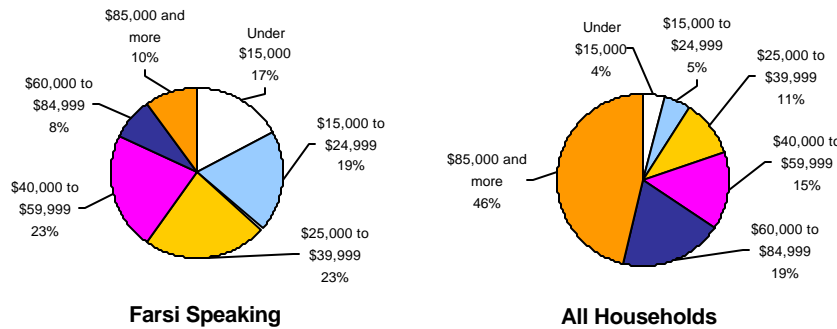
88.0% Would be willing to volunteer some of their time to improve their neighborhood.

## Family Structure of Households With Public School Children



Note: Data for Farsi speaking households are 2000 data and data for all households are 1998 data.

## Household Income Distribution Households With Public School Children



Note: Data for Farsi speaking households are 2000 data and data for all households are 1998 data.

Household Size	Farsi Speaking	All Hhlds.
Two Person	1.5%	5.9%
Three Person	11.9%	27.4%
Four Person	37.3%	41.8%
Five Person	26.9%	16.4%
Six Person or More	22.4%	8.4%
Average Size	4.88	3.98
Average Number of Persons Under 19	2.14	1.87
Average Number of Persons 19 yrs +	2.74	2.12

Housing	Farsi Speaking	All Hhlds.
Monthly Cost		
Under \$500	10.9%	3.7%
\$500 to \$774	14.3%	11.3%
\$775 to \$999	16.8%	13.4%
\$1,000 to \$1,249	22.7%	19.3%
\$1,250 to \$1,499	11.8%	16.0%
\$1,500 or more	23.5%	36.4%
Average Rent	\$ 741	\$ 966
Average Owner Cost	\$ 1,401	\$ 1,548
Owner Occupied	64.3%	72.6%

Note: Data for Farsi speaking households are 2000 data and data for all households are 1998 data.

## Profile of Farsi Speaking Parents and Guardians

Employment Status	Men	Women
Employed	91.3%	67.4%
Unemployed	2.4%	20.7%
Not in Labor Market	6.3%	11.9%

Hours Worked Per Week	Men	Women
20 or Fewer Hours	0.9%	9.0%
21 to 30 Hours	4.4%	16.9%
31 to 40 Hours	35.4%	55.1%
41 to 50 Hours	51.3%	18.0%
More Than 50 Hours	8.0%	1.1%

Working Multiple Jobs	Men	Women
Work Multiple Jobs	9.3%	9.4%

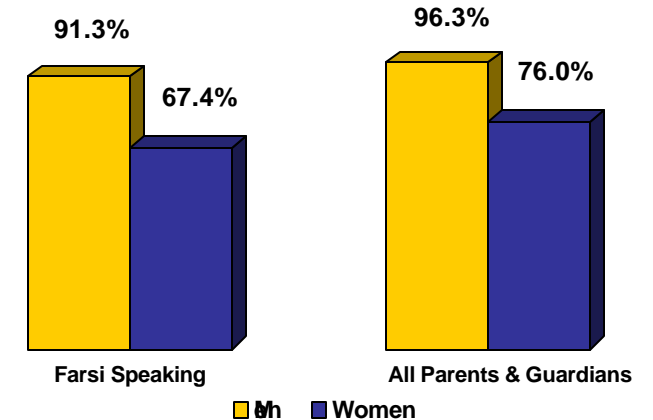
Citizenship	Men	Women
Citizen	55.6%	56.8%
Desire Citizenship	43.6%	42.4%
Don't Want Citizenship	0.9%	0.8%

Educational Attainment	Men	Women
Less Than 7th Grade	0.8%	5.3%
7th to 12th Grade	4.8%	6.1%
HS Degree or GED	13.5%	24.4%
Some College	15.1%	24.4%
Associate Degree	8.7%	13.0%
BS Degree	32.5%	22.1%
Post Graduate	24.6%	4.6%
Other	0.0%	0.0%

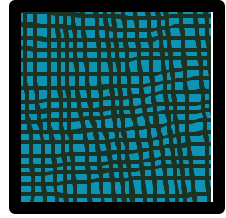
Years in United States	Men	Women
Fewer Than 5 Years	10.4%	14.6%
5 To 9 Years	22.4%	25.4%
10 to 14 Years	20.0%	24.6%
15 Years or More	47.2%	35.4%

Years in Fairfax County	Men	Women
Fewer Than 5 Years	21.6%	23.7%
5 To 9 Years	27.2%	28.2%
10 to 14 Years	29.6%	30.5%
15 Years or More	21.6%	17.6%

## Percent Employed Full or Part-Time Parents and Guardians of Public School Children



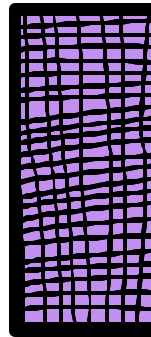
Note: Data for Farsi speaking persons are 2000 data and data for all persons are 1998 data.



93.3% Have at least one parent or guardian who is employed.

64.3% Are homeowners.

91.7% Have at least one parent or guardian who speaks English very well or well.



53.4% Desire to improve the English skills of their family members.



33.8% Are able to save money on a regular basis for future needs.

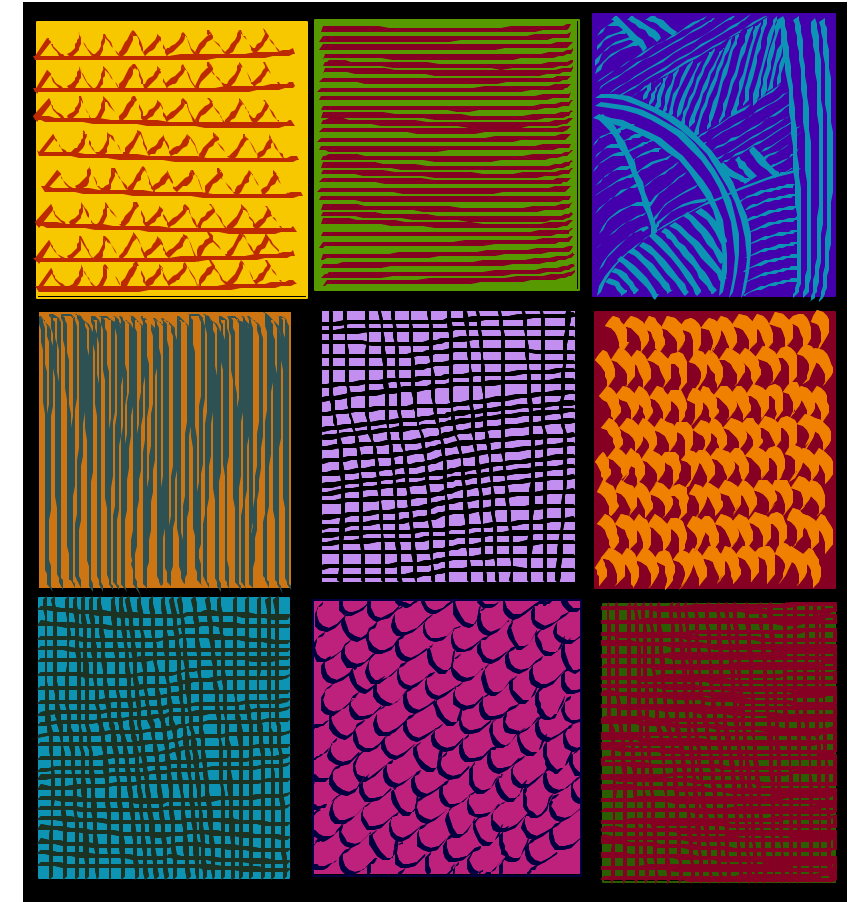
Note: The data in this report are based on a sample of 139 households. The results of this sample are representative of the approximately 1,100 households with children enrolled in Fairfax County Public Schools that indicated their primary language as Farsi or Persian. As of January 2000, Fairfax County had a projected 353,400 households.

<http://www.co.fairfax.va.us/service/dsm/default.shtm>

Fairfax County  
Department of Systems Management  
For Human Services  
12011 Government Center Parkway  
Fairfax, VA 22035



# A Community Sampler



## Farsi Speaking Households With Public School Children

Department of Systems Management for Human Services