



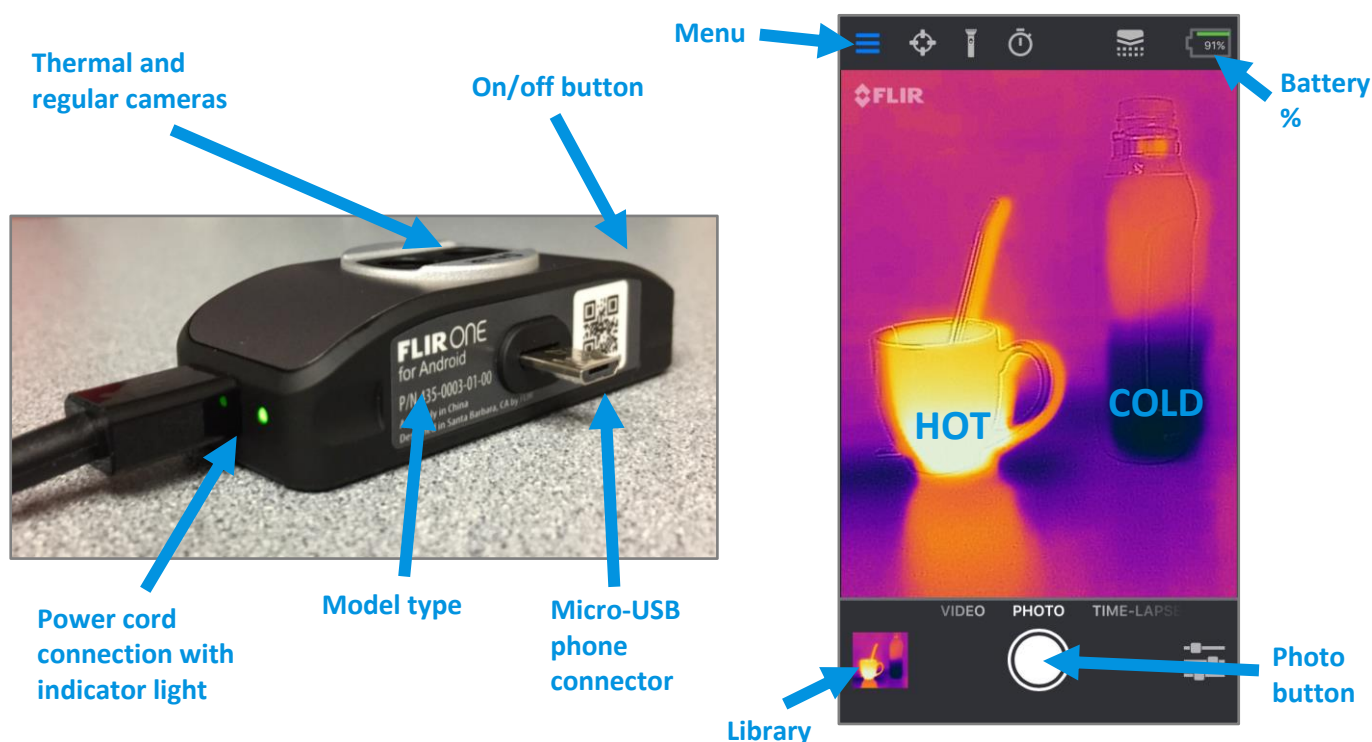
Thermal Camera Loan Program: Camera Operation

This thermal camera requires Android Version 4.4.2 or higher and a micro-USB connector. If you have a USB-C connector, use the adapter located in the case. For more information on compatibility, please see the Android Compatibility Guide on the third page.

- 1) Download and open the FLIR ONE app on your Android phone.
- 2) Connect the camera to your phone facing out and press the camera's power button. The button's light will flash green when the device is ready. If you use a phone case, you will probably need to remove it.
- 3) If the camera does not turn on, you can charge it with the USB cable provided. The small light next to the power connection blinks while charging and stays on continuously when fully charged. The camera requires about an hour to fully charge.
- 4) The app opens to either the camera or home screen depending on if the camera is turned on. Use the Menu buttons to navigate between the two. To access the camera, FLIR requires that you create an account.
- 5) With the camera screen open, use the white circle to take pictures. Select the library button at the bottom left to view your photos. Swipe up or down on a photo to reveal the normal image.
- 6) For more information, refer to the Help section on the Menu drop down or the Tips and Tricks section on the home screen.



TROUBLESHOOTING TIP: If the camera does not seem to work, you can reset it by holding the power button down for 30 seconds. You can also try uninstalling the app, restarting your phone, and reinstalling the app.

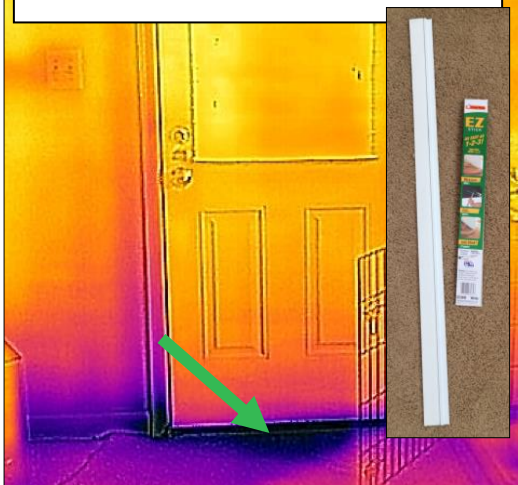


Thermal Camera Loan Program: Energy Saving Opportunities

Thermal imaging cameras use color to show the relative temperature of objects: cold is purple, moderate is red, and hot is yellow. In the winter, purple spots inside your home indicate a lack of air sealing or insulation. In the summer, these spots would appear yellow instead. For the camera to function properly, make sure there is at least a 20-degree temperature differential between the inside and outside of your home.

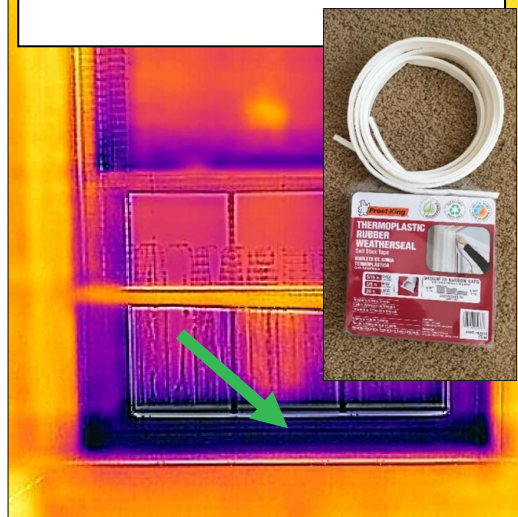
Drafty Door

Drafts often occur underneath doors. Add door sweeps to both regular and screen doors and check that existing door sweeps are in good condition.



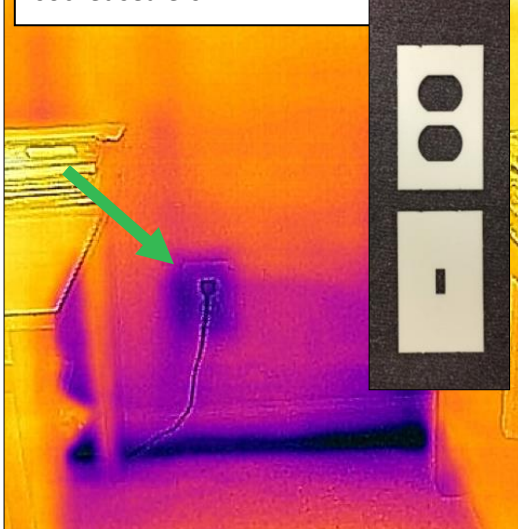
Leaky Windows

Even new windows can let air pass through around the edges. Add extra weather stripping along drafty spots.



Leaky Outlets

Exterior wall electrical outlets are often uninsulated. Block airflow with socket sealers.



Electronics on Standby

Electronics can still use electricity when not being used. Install a smart power strip to stop electricity from flowing to unused devices.



For more energy saving opportunities that you can identify with a thermal imaging camera, and for before and after photos of the projects above, visit our website at www.fairfaxcounty.gov/energy/energyactionfairfax/.
Questions or comments? Contact us at energyactionfairfax@fairfaxcounty.gov.

Android Compatibility Guide

FLIR's Generation 2 camera requires Android Version 4.4.2 or higher and a micro-USB connector. Compatible devices include:

Manufacturer	Model Number	Model	Operating System
LG	V400	G Pad 7.0	Lollipop (5.0.2)
LG	Nexus 5 D820	Nexus 5	Marshmallow (6.0.1)
LG	D855	G3	Lollipop (5.0)
Motorola	XT1540	Moto X	Marshmallow (6.0)
Motorola	XT1540	Moto G 3 rd Generation	Marshmallow (6.0)
Motorola	Nexus 6	Google Nexus 6	Lollipop (5.0) to Marshmallow (6.0)
Samsung	SM-G930F	Galaxy S7	Marshmallow (6.0.1)
Samsung	SM-G935F	Galaxy S7 Edge	Marshmallow (6.0.1)
Samsung	SM-G9201, SM-G920F	Galaxy S6	Marshmallow (6.0.1)
Samsung	SM-G900H, SM-G900F	Galaxy S5	Lollipop (5.0)
Samsung	GI9500	Galaxy S4	KitKat (4.4.2)
Samsung	SM-T700	Galaxy Tab 8.4	Lollipop (5.0.2)
Samsung	SM-T800	Galaxy Tab 10.5	Lollipop (5.0.2)
Sony*	PM-0270-BV	Xperia Z	Lollipop (5.0.2)
Sony**	E6603	Xperia Z5	Lollipop (5.1.1)
HTC***	2PQ9100	One A9	Marshmallow (6.0)
HTC***	OP6B100	One M8	Lollipop (5.0.1)
HTC***	OPJA100	One M9	Marshmallow (6.0)
HTC***	D820u	Desire 820	KitKat (4.4.4)
HTC***	OPAJ300	One E8	Lollipop (5.1.1)
HTC***	4115B-OP82100	Nexus 9	Lollipop (5.1.1)

* The phone connection is on its side, orienting the camera sideways.

** In order to detect the camera, go to Settings > Device Connection > USB Connectivity > Detect USB Device. Video recording is not supported.

***These phones have a reversed micro-USB connector that orients the camera towards you. Attach the "R" re-orienting adapter to the phone so that the camera faces out.

If you have a USB-C connector, which is true for newer Android phones, use the adapter located in the case. Connect the adapter to the camera, and then connect the adapter to your phone. Compatible phone models include the Google Pixel, Google Pixel XL, Google Nexus 6P, Samsung Galaxy S8, Samsung Galaxy S8+, and Samsung Galaxy A5.



If this Generation 2 camera plus adapter does not work with your phone, the Generation 3 camera could work. If you need to exchange your Generation 2 camera for a Generation 3 camera, contact energyactionfairfax@fairfaxcounty.gov. For additional compatibility questions, please contact FLIR ONE at 844-283-5471 or FLIRONE-Support@flir.com.