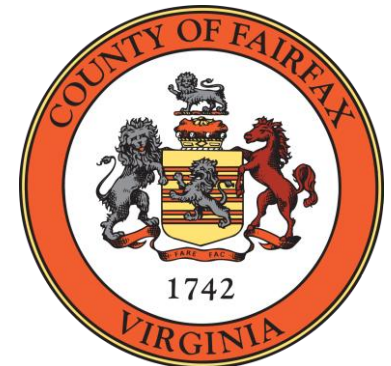


Fairfax County Sustainable Procurement Initiatives

Chris McGough and Nathalie Owen
Department of Procurement and Material Management
March 10, 2021



Contents

Supply Chain Corporate Social Responsibility (CSR) Program

Supply Chain Greenhouse Gas Emissions Analysis

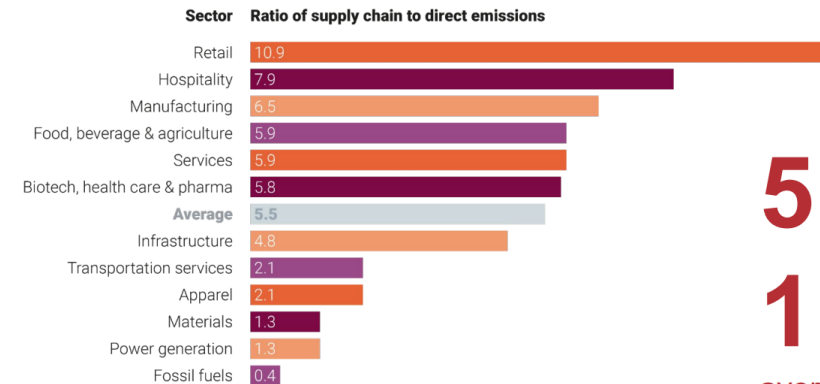
Sustainable Purchasing Policy

Why Corporate Social Responsibility (CSR)?



Source: EcoVadis

Impact of business is in their supply chains



5.5:
1

average ratio
of supply chain
to direct carbon
emissions
#ZDP-SupplyChain

Source: Carbon Disclosure Project

Our Supply Chain CSR Program

Goal

- Measure the social and environmental impacts of Fairfax County's supply chain and work with suppliers towards improved performance

Strategy

- Partner with EcoVadis to conduct CSR assessments of top suppliers



How It Works



Achievements to Date

65

of our top suppliers
have participated

\$275 million*

of our annual spend is now represented
by CSR scorecards

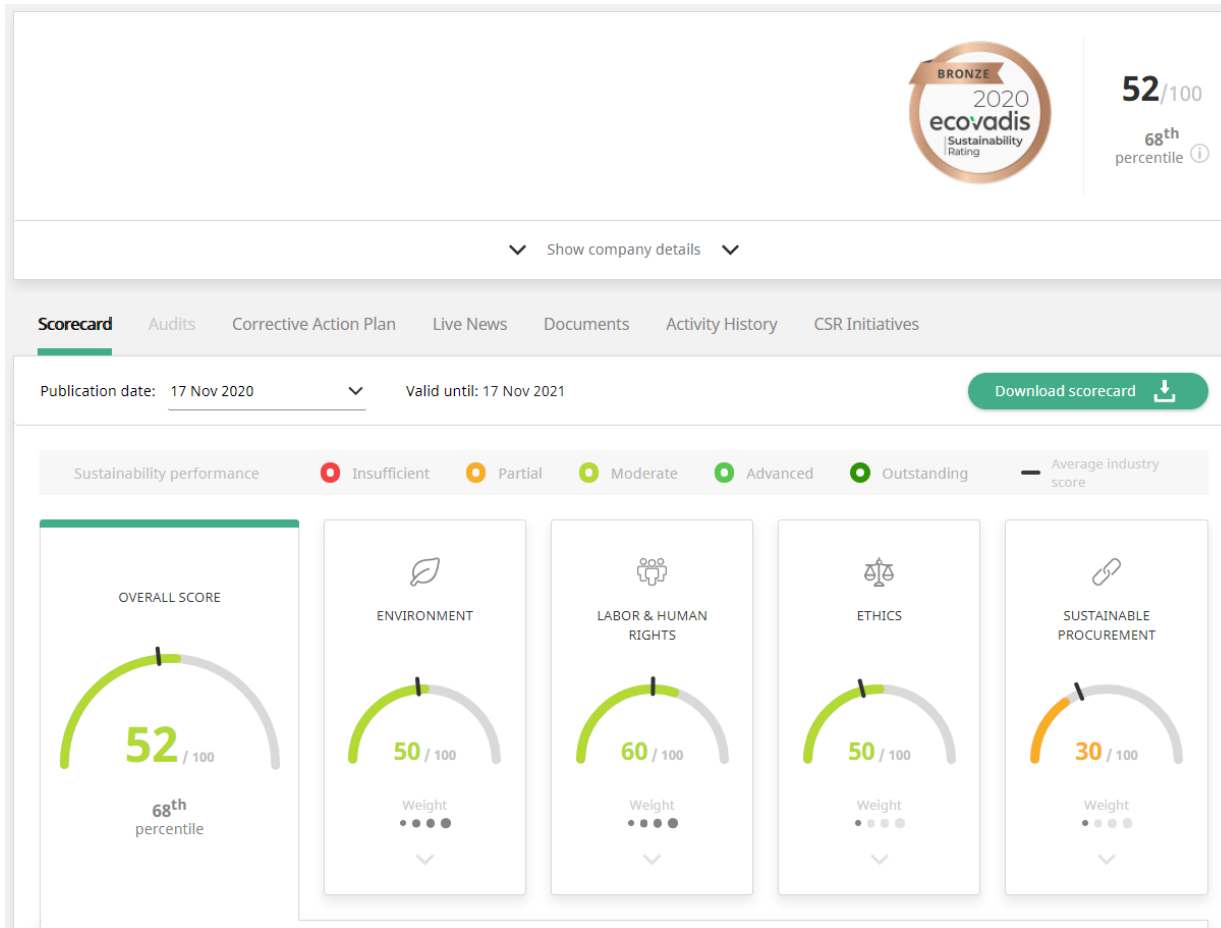
40+

County agencies & FCPS
have been engaged



* Includes some FCPS spend

Sample Supplier Scorecard



| Labor & Human Rights ⓘ | | Weight: ●●●● ^ |
|--|--|----------------|
| Strengths (12) Improvement Areas (7) 360° Watch Findings (1) | | |
| Policies | | |
| Strengths | | |
| Labor or human rights policy on some relevant issues [i.e. employee health & safety] ⓘ | | |
| Actions | | |
| Strengths | | |
| Formalized procedure related to employee health & safety ⓘ | | |
| Compensation for extra or atypical working hours ⓘ | | |
| Employee satisfaction survey ⓘ | | |
| Flexible organization of work available to employees (e.g. remote work, flexitime) ⓘ | | |
| Health care coverage of employees in place | | |
| Whistleblower procedure on discrimination and harassment ⓘ | | |

Environment

Weight

Strengths (4)

Improvement Areas (10)

360° Watch Findings (0)

Policies

Priority

Improvement Areas

High

Inconclusive documentation on environmental policies

Actions

Priority

Improvement Areas

Medium

No information on ISO 14001/EMAS certification

Medium

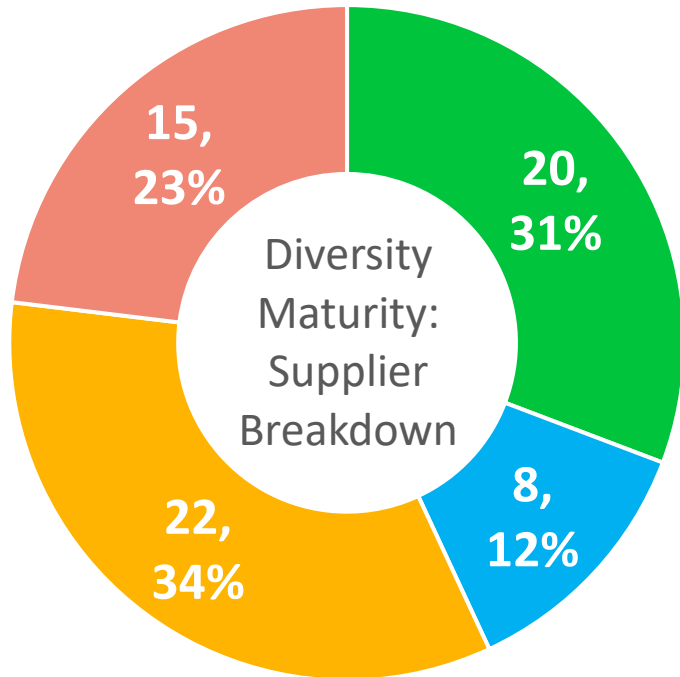
Declares measures on energy consumption & GHGs, but no supporting documentation available

Low

Declares measures on water management, but no supporting documentation available



Impacts of Fairfax County Supply Chain



■ Advanced

■ Engaged

■ Partial

■ None

} 43% of our suppliers have some actions in place to promote diversity and/or prevent discrimination.

} 57% of our suppliers have a low level of maturity, including 23% having no actions nor reporting in place on the topic.

38% of our suppliers report on their CO2 emissions

32% of our suppliers use renewable energy

18% of our suppliers are part of the Science Based Targets Initiative

2021 and Beyond

Formalize our program and incentivize improvements

- Integrate CSR assessments into procurement process
- Encourage and reward high performance



Supply Chain Greenhouse Gas Emissions Analysis



Source: www.paperadvance.com

- Estimate GHG emissions of County's supply chain
- Conduct tier analysis
- Obtain recommendations for next steps

Knowledge to be Gained

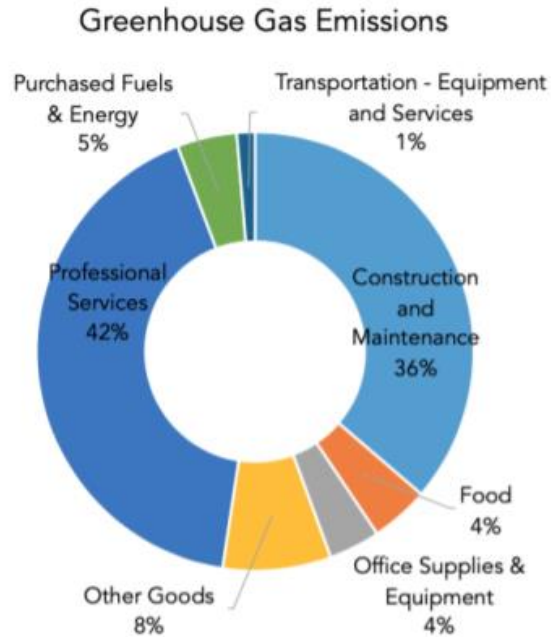
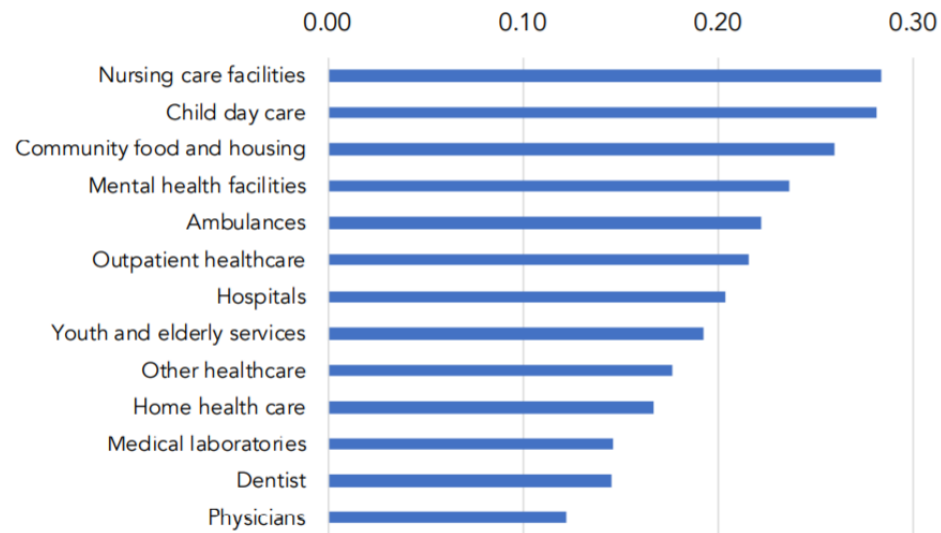


Figure 7: Comparison of GHG impacts (kg CO₂e / \$) for various types of services.



Expert
Recommendations

Benefits of Analysis

Support from
diverse
stakeholders

Collaboration
with County
agencies

Communication
to suppliers

Emissions
reduction
actions!

Sustainable Purchasing Policy (SPP)

Discussion