



Fairfax County
**Neighborhood and
Community Services**

**Pallas Washington,
Deputy Director**



Agenda

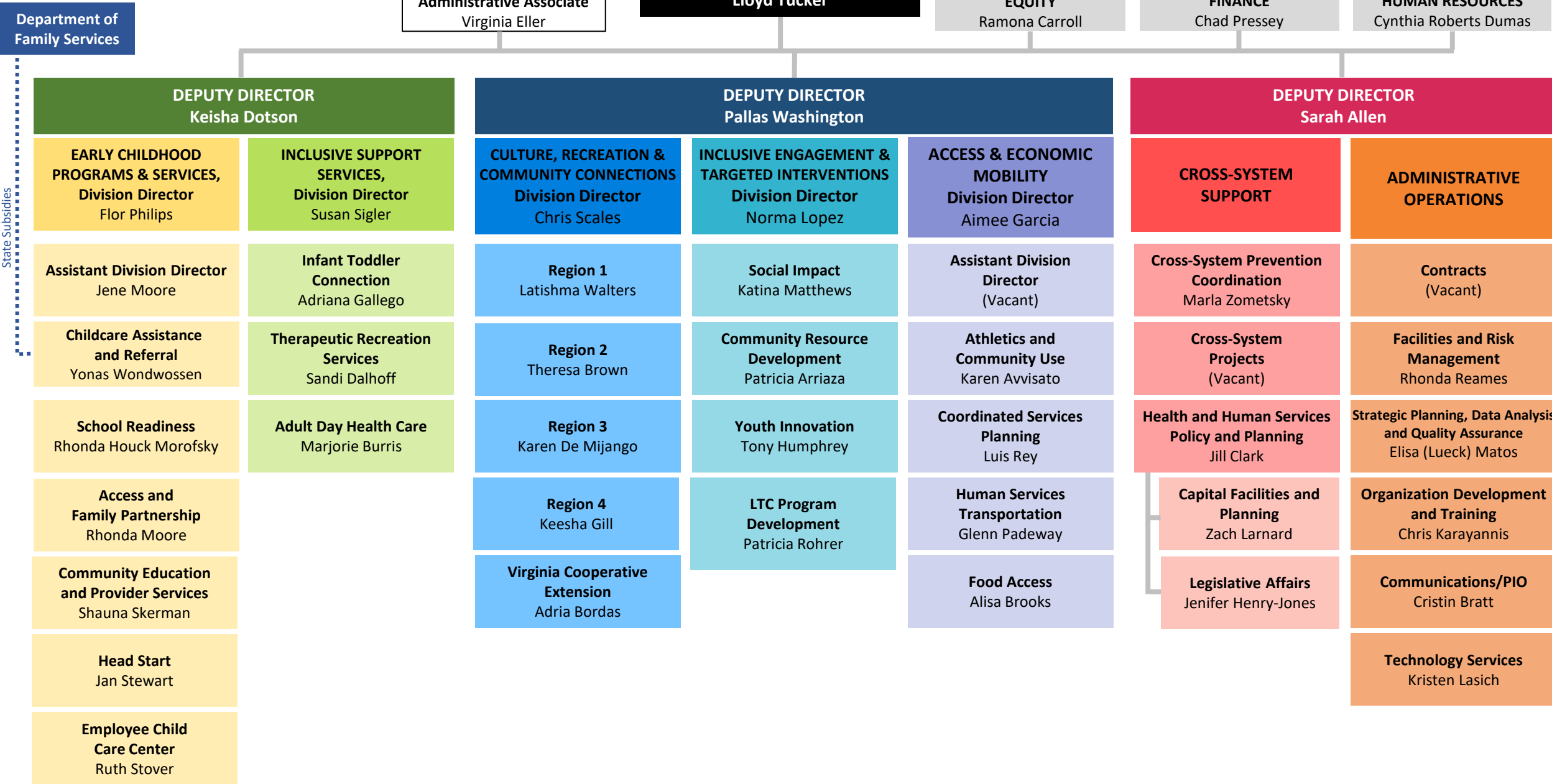
1. Organizational Structure
2. Centering People
3. Targeted Interventions
4. Human-Centered Design
5. Community Engagement
6. Questions



Organizational Structure



Fairfax County Department of Neighborhood & Community Services Functional Org Chart



State Subsidies

Centering People



Espoused Beliefs

MISSION

Our mission is to partner with communities, families and individuals to provide opportunities to access a continuum of resources that promote equity and create positive outcomes for people of all ages and abilities.

VISION

Our vision is to see connected communities where all individuals and families are supported and empowered to thrive.

VALUES



ACCOUNTABILITY



COLLABORATION



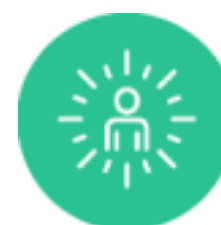
COMMITMENT TO
COMMUNITY



CULTURE OF
LEARNING



DIVERSITY



EMPLOYEE
WELLBEING



INNOVATION



EQUITY

A group of children are playing basketball on an indoor court. The scene is overlaid with a blue tint. The text "Targeted Interventions" is written in large, white, bold letters across the center of the image. In the foreground, a child is seen from behind, wearing a blue jersey with the name "CARLOS" and the number "7" on the back. Other children are scattered across the court, some in blue shirts and others in different colors. A basketball hoop is visible in the background.

Targeted Interventions

Key Elements of a Communities of Opportunity



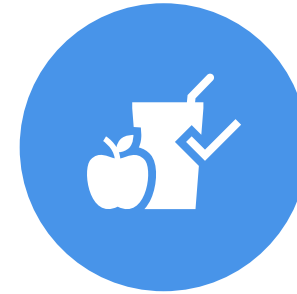
EDUCATION



EMPLOYMENT



MOBILITY



FOOD



RECREATION/CULTURE



HOUSING



JUSTICE



HEALTHCARE

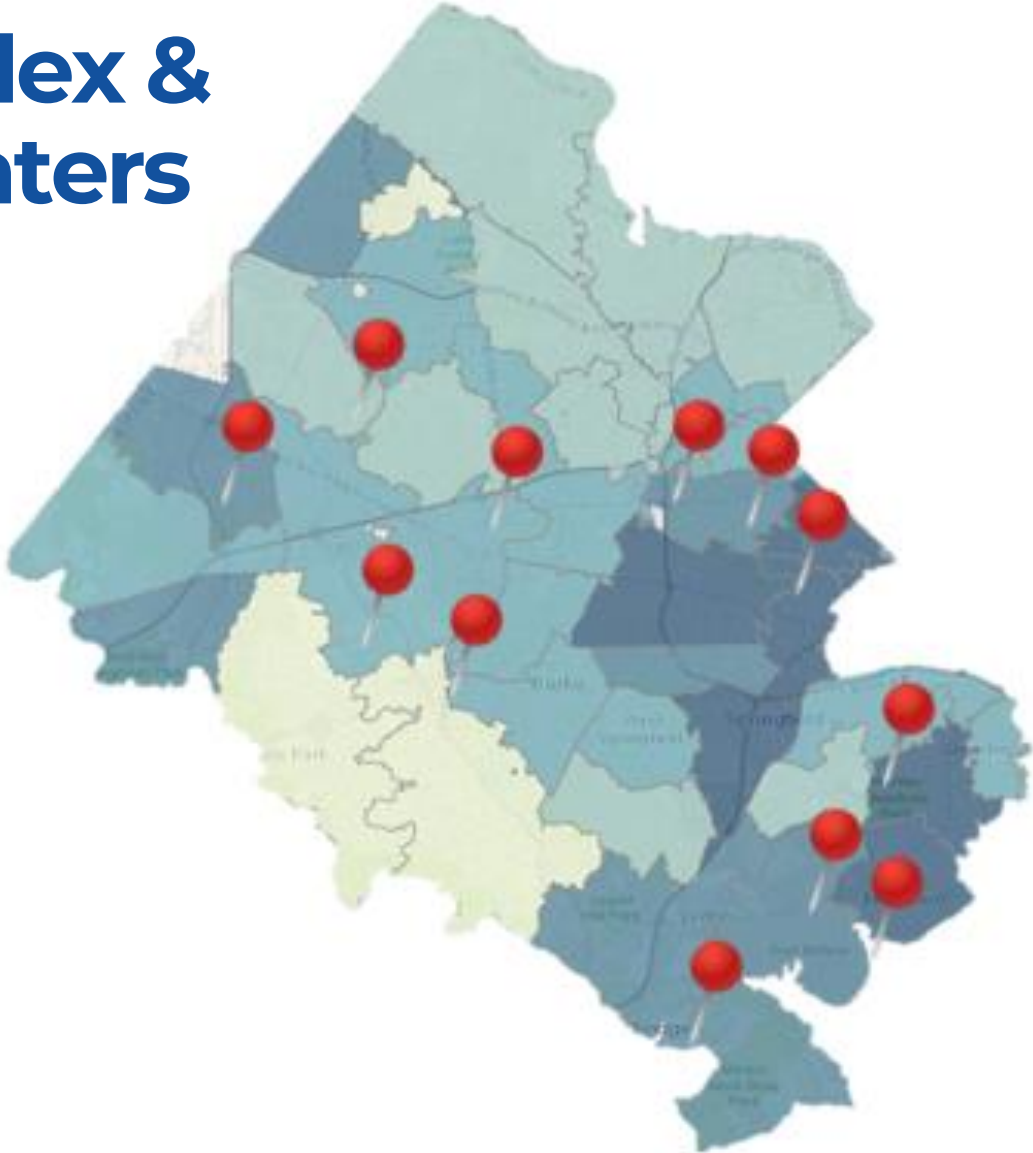


DIGITAL ACCESS



QUALITY CHILDCARE

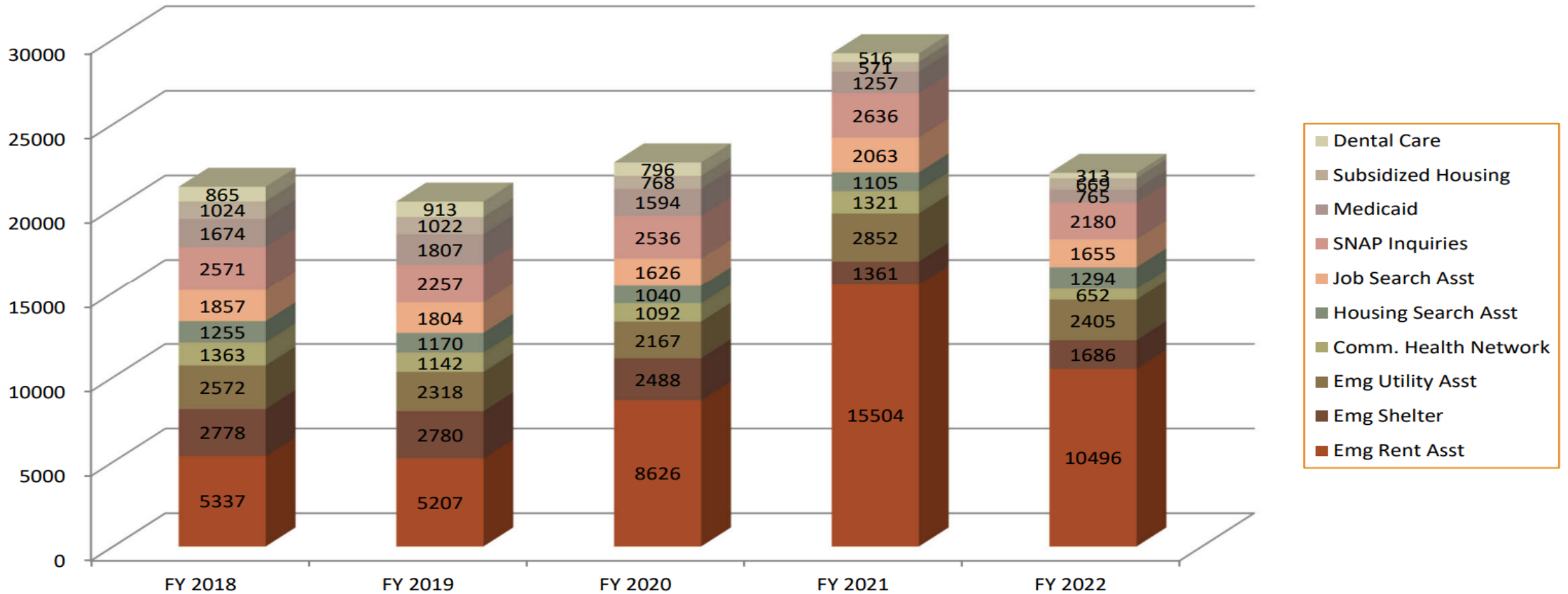
Vulnerability Index & Community Centers



Vulnerability Index



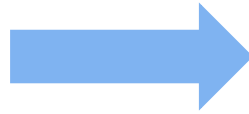
Coordinated Services – Top Contacts





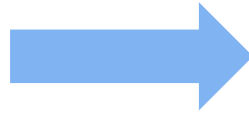
Human-Centered Design

Human Development – A Focus on the Person



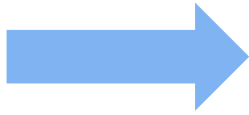
Cognitive Domain

Cognitive development involves learning, attention, memory, language, thinking, reasoning, and creativity.



Physical Domain

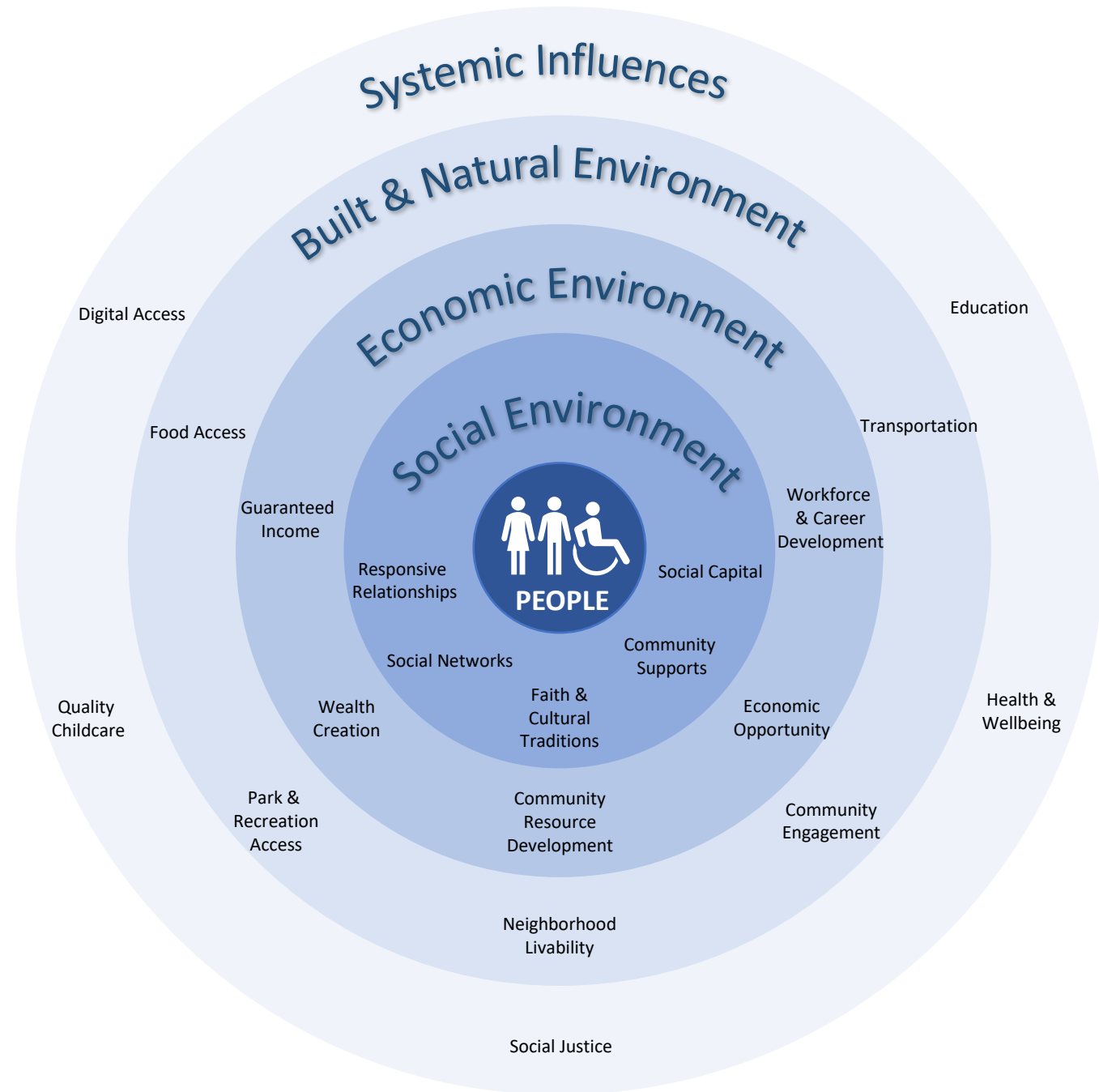
Physical development involves growth and changes in the body and brain, the senses, motor skills, and health and wellness.



Psychosocial Domain

Psychosocial development involves emotions, personality, and social relationships.

Promoting Healthy Environments



The image features three individuals smiling and posing for a photo. They are wearing blue polo shirts and caps. The woman on the left has a name tag that reads "Kali Pellegrino". The man in the center is wearing a cap with a flag and glasses. The man on the right is wearing a cap with "DeVill" on it. All three shirts have a logo for "Fairfax County NCS Neighborhood and Community Services". The entire image is overlaid with a semi-transparent blue filter, and the text "Programs & Services" is centered in white.

Programs & Services

NCS Strategic Goals

1

**Facilitate
Economic
Security &
Resiliency**

2

**Expand
Access to &
Awareness
of Resources**

3

**Support
Health &
Well-Being**

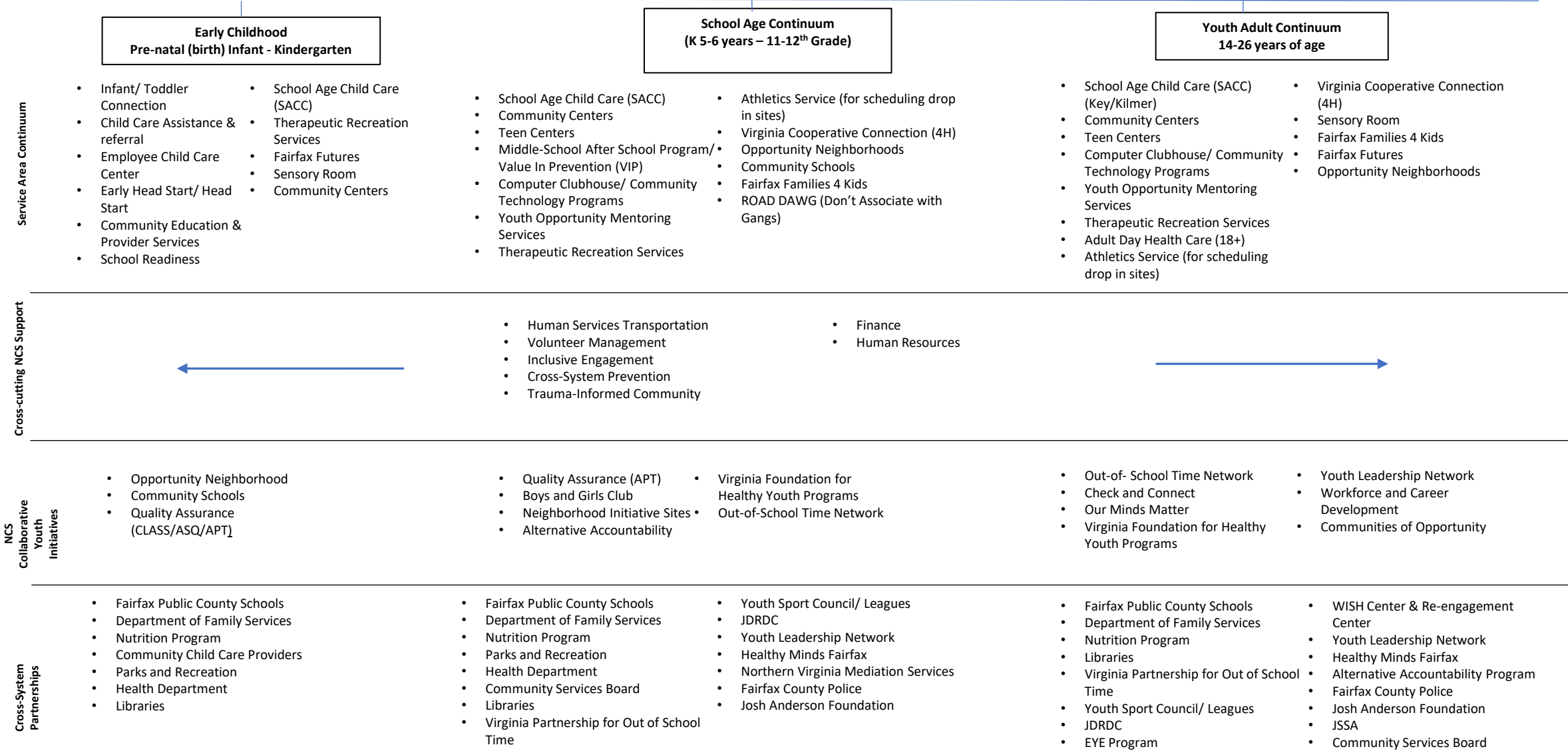
4

**Equip the
Agency to
Meet
Evolving
Needs**

5

**Promote
Community
& Belonging**

NCS Youth Continuum of Services



NCS Center-, Community-, & School-based Opportunities

RECREATIONAL

Promote Inclusion & Diversity
SACC, Camp Fairfax, VIP,
Therapeutic Recreation

EDUCATIONAL

Support Economic Security & Resilience
Head Start, Infant Toddler Connection,
School Readiness, Technology Programs

HEALTH

Support Health & Well-being
WIC/Community Health Clinic



SOCIAL

Cultivate Community Trust
Road DAWG, Alternative Accountability
Program, Check & Connect

CIVIC

Promote Community & Belonging
Opportunity Neighborhood, Community
Schools; Non-Profit Partnerships

CULTURAL

Expand Access to & Awareness of Resources
Non-Profit Partnerships, Neighborhood
Initiatives, Boys & Girls Club

ARKANSAS
COMMUNITY CENTER

Community Engagement



CORE PRINCIPLES:

Equitable

Trusted

Data-Driven

Meaningful

Transparent

Accessible

Engage

The county's commitment to the community is to be clear about the level of engagement expected for decisions.

Various relationships, capacity building, community outreach, communications and marketing happen constantly and concurrently to support the engagement levels noted to the right.

Engagement Level

Understand

Contribute

Collaborate

Decide

Community Role



Fairfax County Role

Listen and ask questions to comprehend and grasp significance.

Provide the community with balanced, objective information.

Share concerns and aspirations, and consider the concerns and aspirations expressed by others.

Listen to and acknowledge concerns and aspirations expressed by community and ensure they are considered.

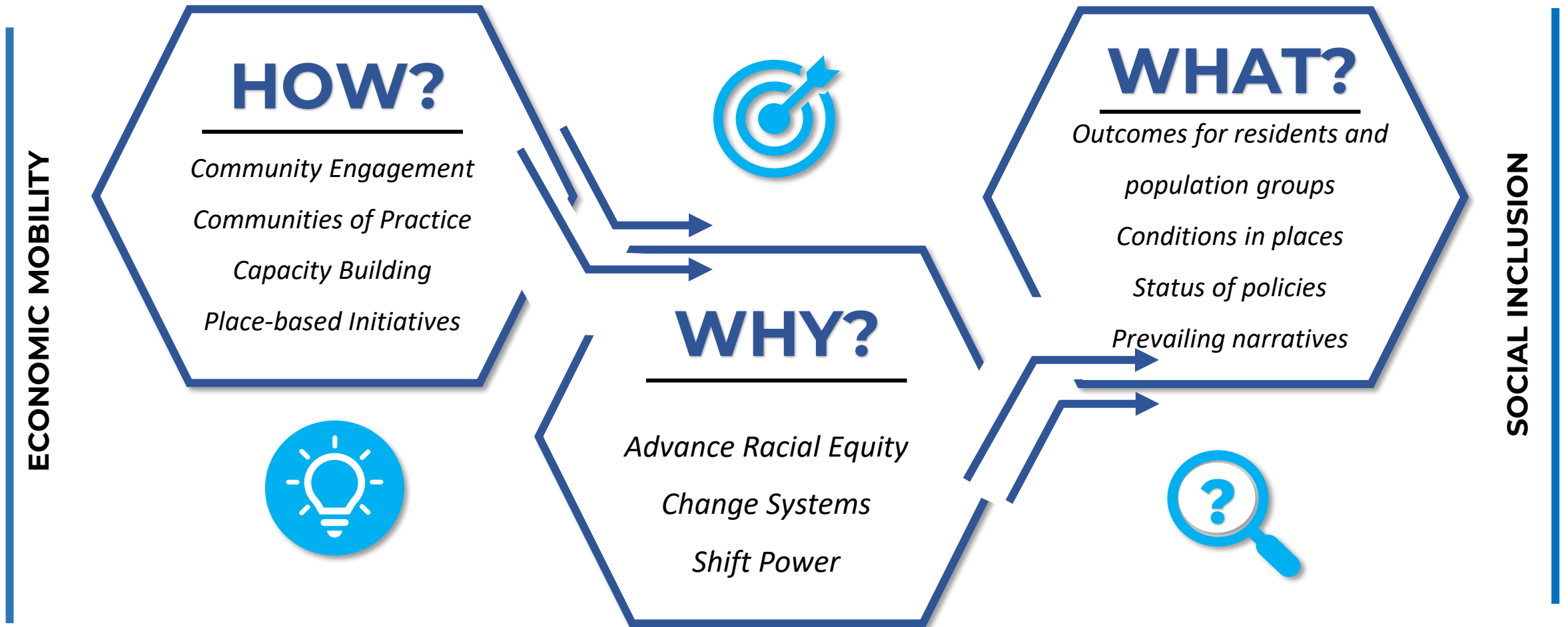
Partner with the county in the development of alternatives and the identification of preferred solutions.

Look to the community in the formulation of solutions and incorporate into decision making to the maximum extent possible.

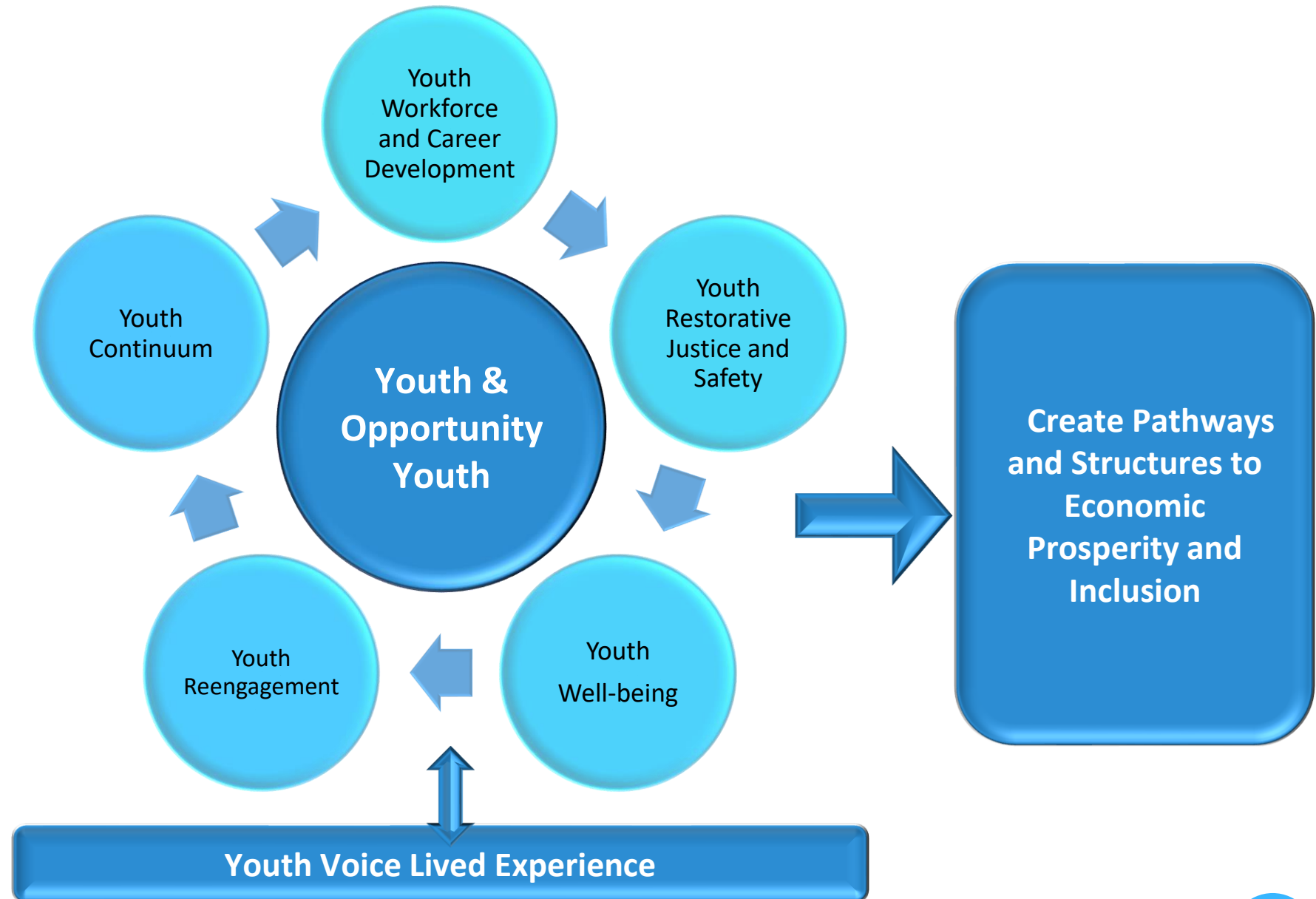
Accept trust of county and community to respect and represent their interests in the decision-making process.

Strategically delegate decision-making as appropriate, such as with the BACs.

NCS Inclusive Engagement Focal Areas



Communities of Practice



A photograph of two children playing in a park. A girl on the left is blowing bubbles, and a boy on the right is running. The scene is filled with many colorful bubbles. The image has a blue overlay.

Questions