



FAIRFAX COUNTY VULNERABILITY INDEX - COMMISSION ON AGING

February 16, 2022

Overview

What is the Vulnerability Index and how was it developed? What is its purpose?

What doesn't the Vulnerability Index do?

How can the Commission on Aging utilize this tool in assessing programs designed for older adults, evaluating the community survey data, and ultimately developing initiatives for the SHAPE plan?

One Fairfax Vulnerability Indices

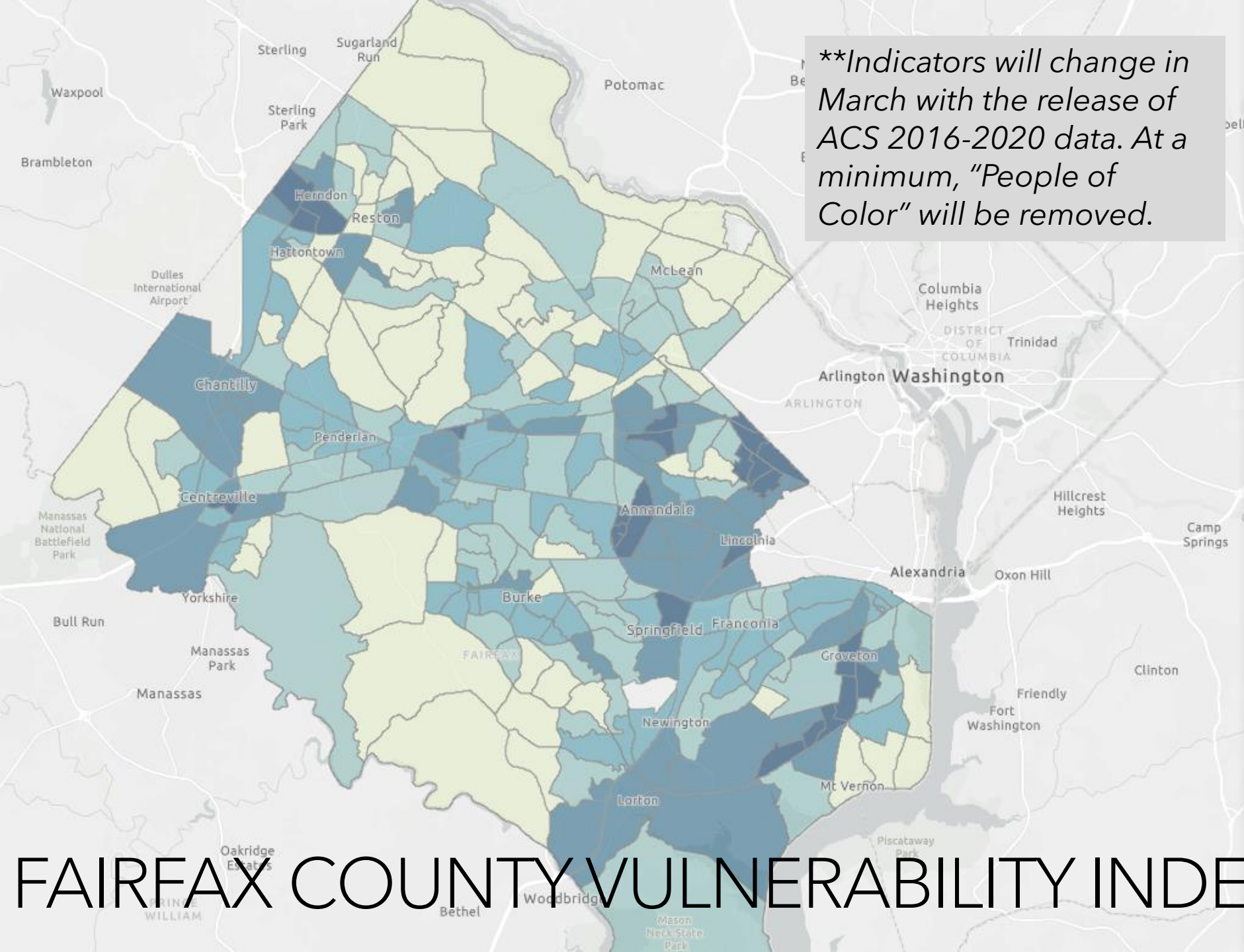
- An index is a composite of indicators that produces a single score
- The vulnerability indices are used to highlight disparities within a geographical area and allow county staff, partners, and other decision makers the ability to make data-informed decisions
- Indices present the current state of the county and can help guide equitable service delivery and resource allocation
- [Vulnerability Index \(V8\)](#) (8 indicators)
- [COVID-19 Vulnerability Index \(CVI\)](#) (21 indicators; adapted from the CDC Social Vulnerability Index)
 - Divided into 5 sub-indices:
 - Socioeconomic Status
 - Household Composition and Disability
 - Race/Ethnicity and Language
 - Housing and Transportation
 - Health

One Fairfax in Practice: Applying an Equity Lens

- **The Proposal:** What is the policy, program, practice or decision under consideration?
- **Desired Results:** What are the outcomes we want to achieve? What are the community-level conditions we aim to impact?
- **Assumptions:** What are our beliefs and ideas about the issue, situation, and people involved? How can we counter implicit bias?
- **Analysis of Data:** What data do we have? What data do we need? What does it tell us?
- **Community Engagement:** How have the people affected by the proposal been engaged? Are there opportunities to expand engagement?
- **Strategies for Equity:** Who will benefit from or be burdened by this action? What strategies will address vulnerability or build opportunity? How can we mitigate unintended consequences?
 - **Implementation:** Is the plan feasible? Is it adequately resourced? How can we think and act creatively to make “it” happen? What opportunities exist for partnership and alignment?
 - **Contextual Factors:** What factors might influence the proposal? What factors are in and/or out of our control? What factors can be addressed by partners or other stakeholders?
 - **Accountability:** How will impacts be documented and evaluated? Are anticipated outcomes being achieved? How can we course correct to achieve desired results?

***Indicators will change in March with the release of ACS 2016-2020 data. At a minimum, "People of Color" will be removed.*

The data used to create the Vulnerability Index is described in the below table. To create a score for each indicator, the data was classified into 5 classes using natural breaks. A score of 1 - 5 was given to each census tract for each indicator, with 5 representing the most vulnerable. The index was calculated by adding all scores together and dividing by 8. Each census tract is categorized as Very High (most vulnerable), High, Average, Low, Very Low (least vulnerable).



Indicator	Description	Source
People of Color	Percentage of population who are persons of color	2015-2019 American Community Survey, Table B01001H
Low English-Speaking Ability	Percentage of population 5 years and older who speak English less than "Well"	2015-2019 American Community Survey, Table B16004
Low Educational Attainment	Percentage of population 25 years and older who lack a Bachelor's degree	2015-2019 American Community Survey, Table B15003
Household Income	Median household income	2015-2019 American Community Survey, Table B19013
Households without a Vehicle	Percentage of households without a vehicle	2015-2019 American Community Survey, Table B25044
Population without Health Insurance	Percentage of population without health insurance coverage	2015-2019 American Community Survey, Table S2701
Cost-burdened renter households	Percentage of households paying more than 30% of gross income on rent	2015-2019 American Community Survey, Table B25070
Severely cost-burdened renter households	Percentage of households paying more than 50% of gross income on rent	2015-2019 American Community Survey, Table B25070

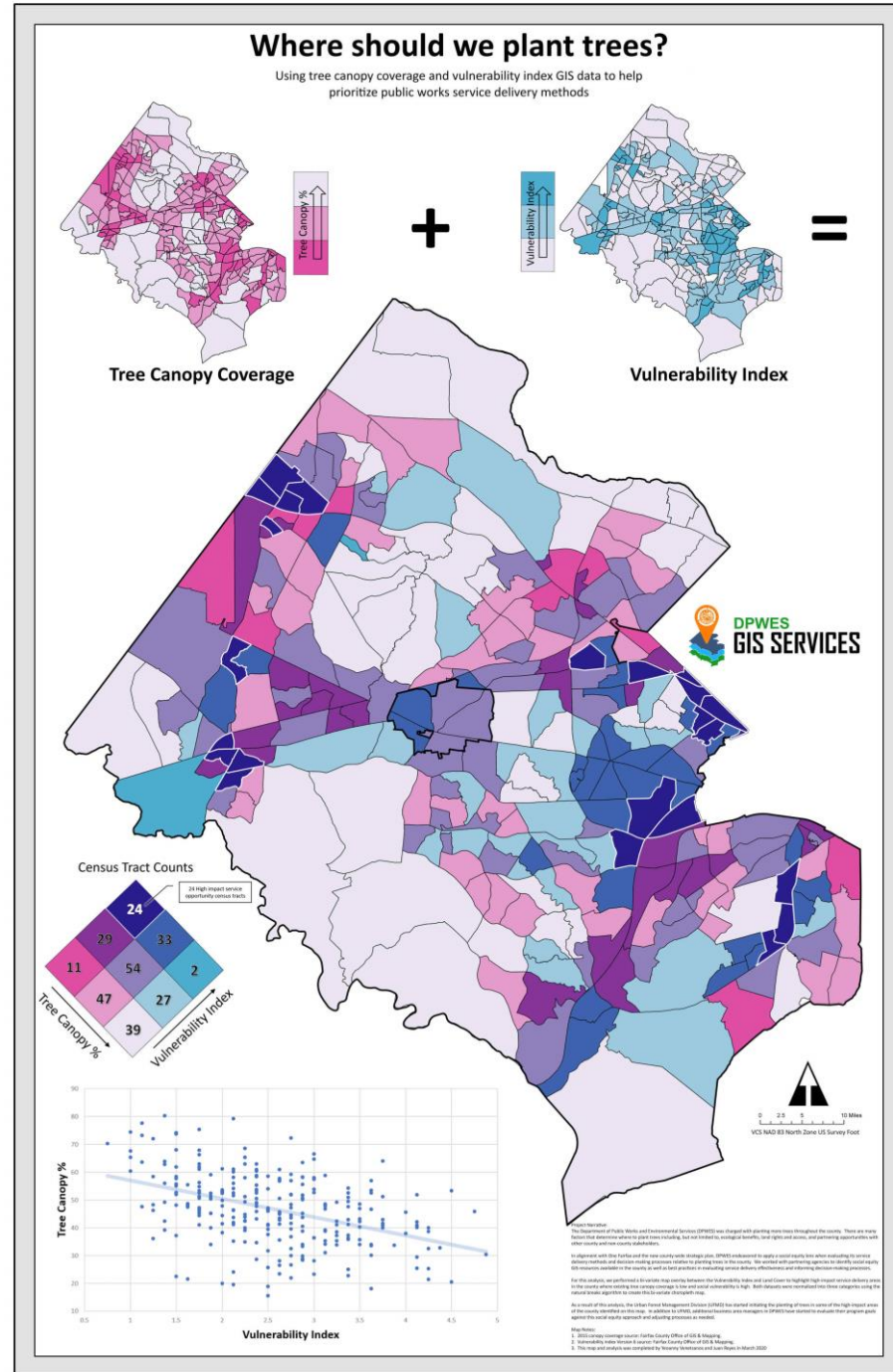
FAIRFAX COUNTY VULNERABILITY INDEX



OPERATIONALIZING THE VULNERABILITY INDEX

PUBLIC WORKS & ENVIRONMENTAL SERVICES

TREE COVER ANALYSIS

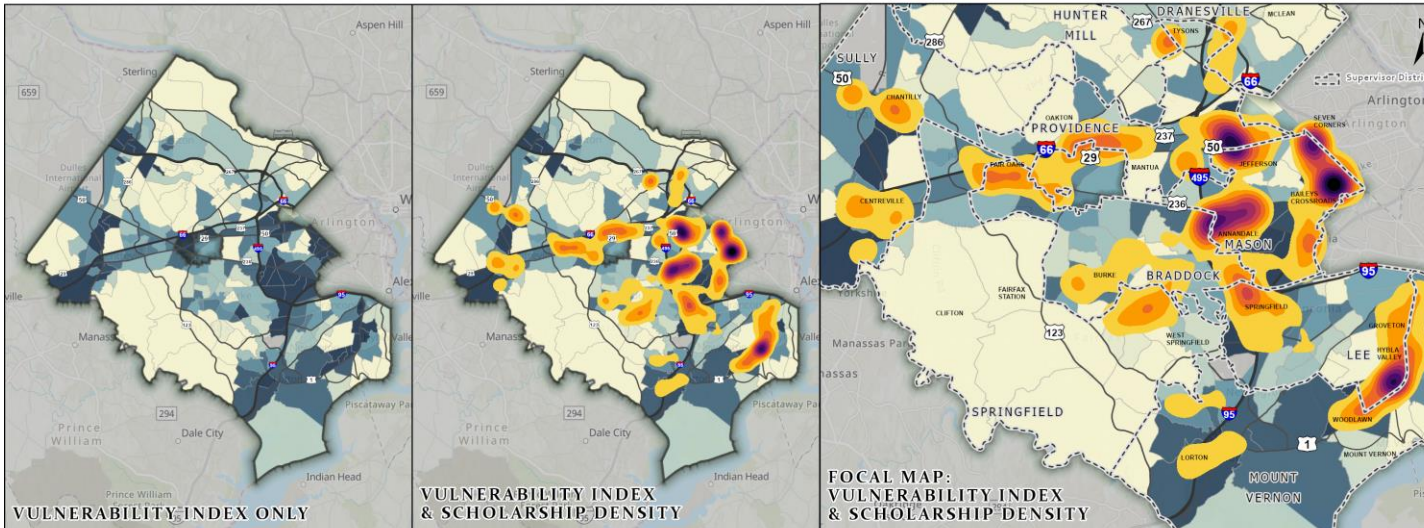


FY 2019 RECENTER SCHOLARSHIPS WITH VULNERABILITY INDEX

Data Sources:
Fairfax County Park Authority, Park Services: Fiscal Year 2019 Class Scholarships (2019)
Fairfax County Department of Information Technology, One Fairfax,
and the Office of Strategy Management: Vulnerability Index (2019)



Published by the Fairfax County Park Authority on February 6, 2020.



THE FAIRFAX COUNTY VULNERABILITY INDEX

The Vulnerability Index was created in 2019 for use by One Fairfax, as well as in the Human Services Needs Assessment produced by Office of Strategy Management. Eight different datasets from the 2007-2013 American Community Survey were used to create the Index. These datasets include: People of Color, Low English-Speaking Ability, Low Educational Attainment, Household Income, Households without a Vehicle, Population without Health Insurance, Housing cost-burdened households, and Severely cost-burdened renters. A score of 1 - 5 was given to each census tract for each indicator, with 5 representing the most vulnerable. The index was calculated by adding all scores together and dividing by 8 – no weighting was applied. For visualization purposes, the data was then classified into 5 classes using natural breaks.

FY 2019 RECENTER CLASS SCHOLARSHIPS

In 2019, the Fairfax County Park Authority awarded thousands of scholarships. Of the 8,134 records shared from Park Services, 8,082 of these matched addresses in Fairfax County and City. This means that 99% of data is displayed in this visualization.

Vulnerability Index

0.75 (Low Vulnerability)

4.875 (High Vulnerability)

Class Scholarship Density Per Sq. Mile

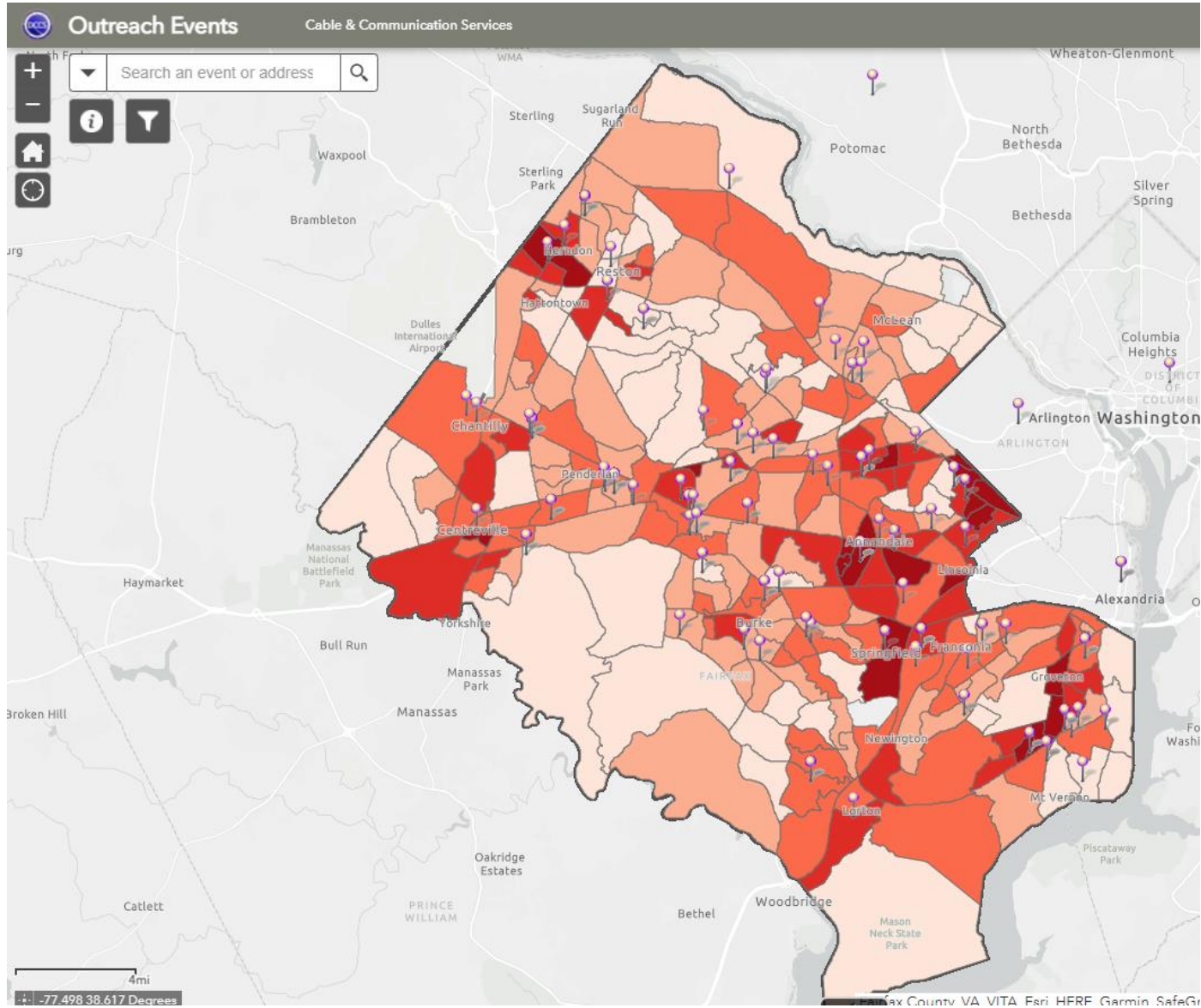
≤66 ≤167 ≤267

≤100 ≤200 ≤300

≤133 ≤233 ≤334

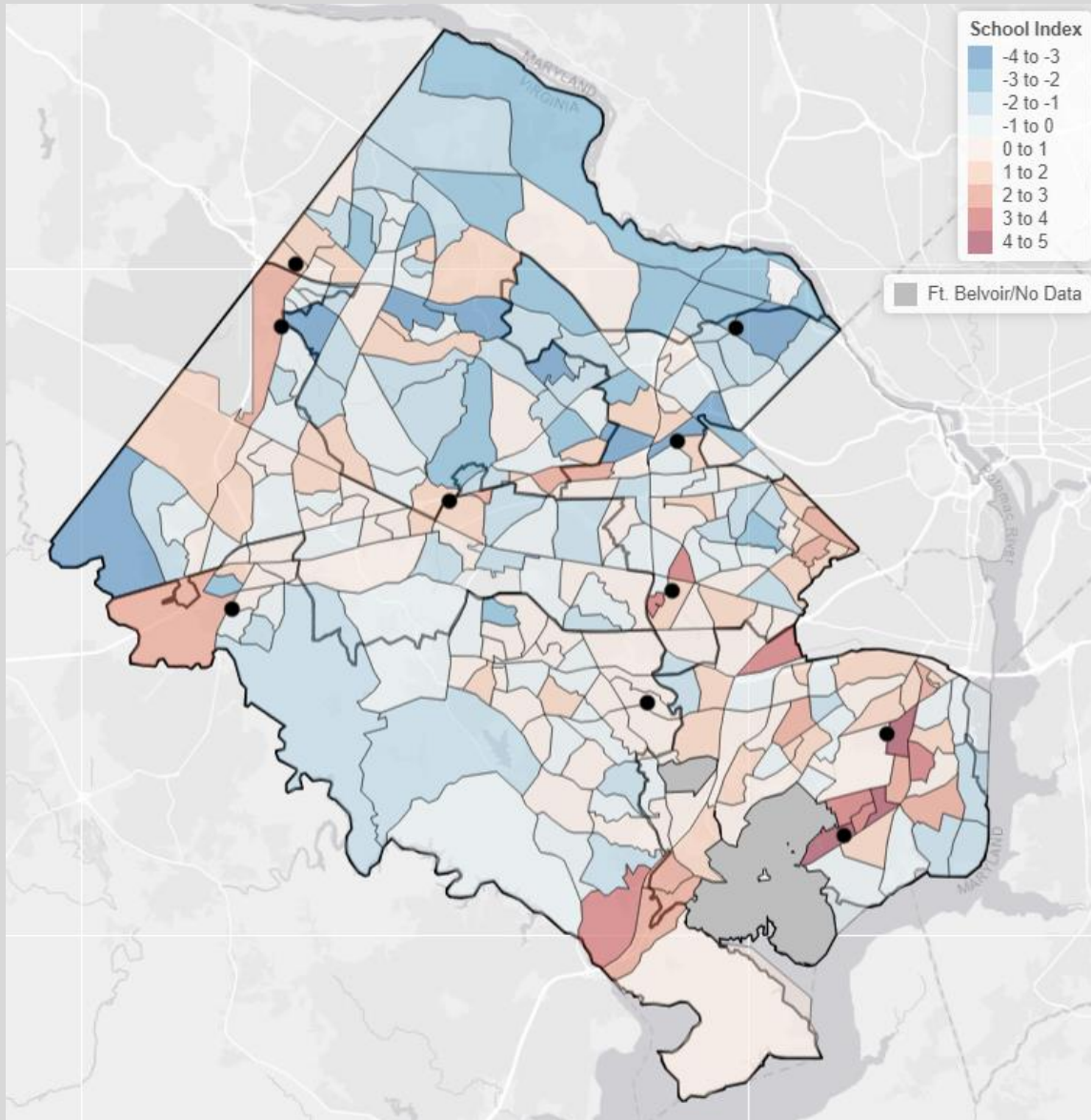
Fairfax County Park Authority: Rec Center Scholarships

Analysis of Rec Center Class
Scholarship recipients with
the Vulnerability Index



DEPARTMENT OF CABLE AND CONSUMER SERVICES

OUTREACH EVENTS



Health Department

Vaccine for ages 5-11: School Selection for Weekend/After Hour Clinics

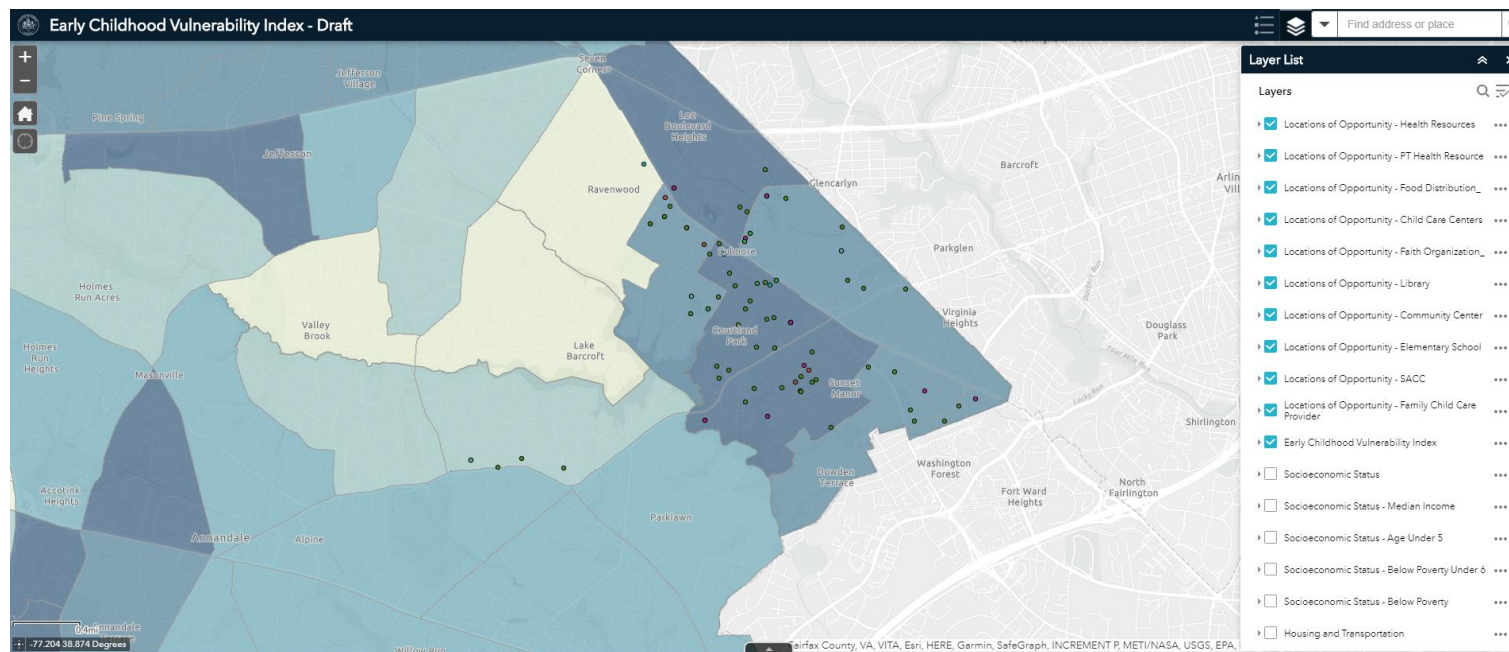
- Site selection was a collaboration of Fairfax County Public Schools & Health Dept
- Health Dept recommendations based on:
 - One Fairfax Vulnerability Index, low vaccination rate, and higher population
 - Geographic balance
 - Site accessibility



Early Childhood Vulnerability Index

- 13 total indicators divided into 5 sub-indices
- Each census tract is given a score of 1 – 5 for each individual indicator, with 5 being the most vulnerable
- The [Early Childhood VI](#) is a composite score of all 13 indicators

Socioeconomic Status	Housing and Transportation	Race/Ethnicity and Language	Health	Early Childhood System/School Readiness
Median Household Income	Households without a Vehicle	Population of Color	Population without Health Insurance Age under 6	Children Aged 3 – 5 not enrolled in school
Age Under 5 Years	Multi-unit Structures	Population that speaks English less than well		
Below Poverty – Under 6 years	Severely Burdened Renters			
Below Poverty	Renter Households			
	Overcrowding			



Early Childhood VI - Locations of Opportunity

- Health Resources
- PT Health Resources
- Food Distribution
- Child Care Centers
- Faith Organization
- Library
- Community Center
- Elementary School
- SACC
- Family Child Care Provider

What doesn't the Vulnerability Index Do?

- Does not answer the question "Why?" and get to the root cause(s) of the current situation
- In isolation, cannot answer the questions
 - Who benefits?
 - Who is burdened?

Vulnerability Index for the Commission on Aging

- Assessing programs
- Evaluating community survey data
- Developing initiatives



Services for Older Adults & Family Caregivers
(caregiver support, dementia friendly, resources)

Housing & Neighborhood Supports
(affordable housing, home modifications, home maintenance, Villages, livable communities)

Access to Mobility Options
(transportation, mobility support, walkability)

Personal Well-Being
(community engagement, isolation public & mental health, nutrition)

Economic Stability and Planning
(financial stability, exploitation, employment, end of life, business partnerships)

Recommendation - Build VI for Older Adults

- Choose indicators based on SHAPE
- Choose data that is free/low cost and from a reputable source (Census, CDC)
- Some data can be disaggregated by Age

One Fairfax in Practice: Applying an Equity Lens

- **The Proposal:** What is the policy, program, practice or decision under consideration?
- **Desired Results:** What are the outcomes we want to achieve? What are the community-level conditions we aim to impact?
- **Assumptions:** What are our beliefs and ideas about the issue, situation, and people involved? How can we counter implicit bias?
- **Analysis of Data:** What data do we have? What data do we need? What does it tell us?
- **Community Engagement:** How have the people affected by the proposal been engaged? Are there opportunities to expand engagement?
- **Strategies for Equity:** Who will benefit from or be burdened by this action? What strategies will address vulnerability or build opportunity? How can we mitigate unintended consequences?
 - **Implementation:** Is the plan feasible? Is it adequately resourced? How can we think and act creatively to make “it” happen? What opportunities exist for partnership and alignment?
 - **Contextual Factors:** What factors might influence the proposal? What factors are in and/or out of our control? What factors can be addressed by partners or other stakeholders?
 - **Accountability:** How will impacts be documented and evaluated? Are anticipated outcomes being achieved? How can we course correct to achieve desired results?

Questions

