



Cherry Blossom PACE



Introduction

October 2022

Introduction



At **Cherry Blossom PACE**, we believe in helping seniors age with health, independence, and dignity.

Providing and coordinating healthcare and support services, we make it possible for seniors with complex health needs to **remain in their homes and part of their communities.**

What is PACE?

Program of All-inclusive Care for the Elderly / PACE is a care approach administered by Federal and State governments and operated by providers

Members are eligible if they are 55+, meet clinical eligibility for significant support, but can safely live in the community.

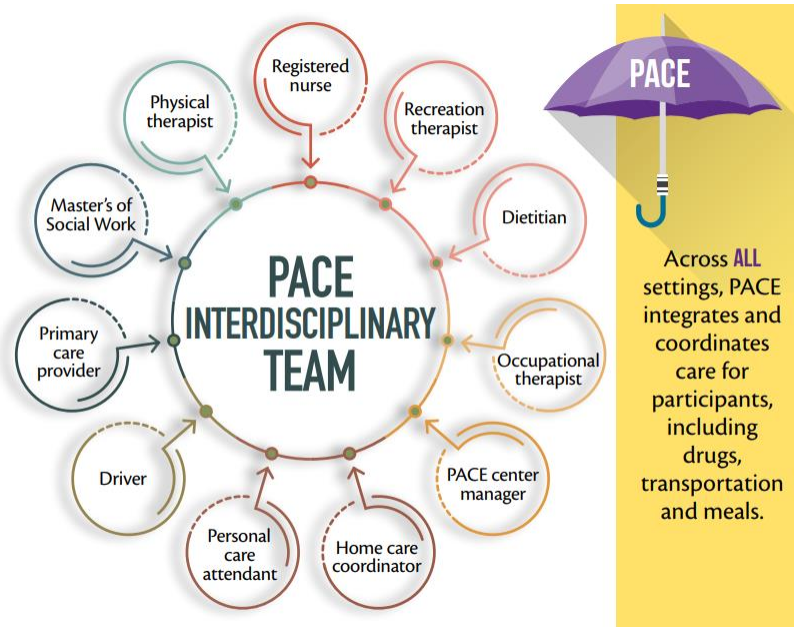


The **typical PACE member** is:

- 77 years old
- Need assistance with 3 or more activities of daily living
- Managing 5 or more chronic conditions
- Likely managing dementia
- Eligible for both Medicare and Medicaid

Three key features of PACE that enable members to age at home

Interdisciplinary and coordinated care



Physical location combining clinic, therapy, & day center

- Provides clinic medical services and physical therapy
- Members have space for socialization, food in a friendly and warm environment
- Transportation coordinated on member behalf

Accountability & flexibility to manage total cost of care

- Receive fixed monthly Medicare & Medicaid payments for each enrollee
- Accountable for all medical expenses (i.e., full risk), including hospital
- Flexibility to spend \$\$s, including on social determinants of health

How we enroll participants

Qualification criteria

- 55 years of age or older
- Live in one of the zip codes of our approved service area
- Meet the clinical eligibility criteria via a Virginia Universal Assessment Instrument
- Be able to live in their home or community safely

Process

- Receive referral, via email or phone
- Conduct initial home visit with potential participant
- If potential participant is interested
 - Initiate level of care assessment, completed via the Universal Assessment Instrument by county social service agency
 - Conduct a home safety evaluation
 - Invite potential participant to visit the center
- Review and discuss initial service package with potential participant and family/caregivers
- Notify VA Medicaid Agency (DMAS) that enrollment is pending - by 25th of the prior month
- Execute paperwork
- Begin transition of care

We are excited to serve Arlington, Alexandria, and parts of Fairfax



- **Location:** 1901 N. Beauregard St., Suite 110, Alexandria, VA 22311
- **Service area zip codes:** 22003, 22015, 22027, 22030, 22031, 22032, 22041, 22042, 22043, 22044, 22046, 22079, 22101, 22102, 22124, 22150, 22151, 22152, 22153, 22180, 22181, 22182, 22201, 22202, 22203, 22204, 22205, 22206, 22207, 22209, 22211, 22213, 22301, 22302, 22303, 22304, 22305, 22310, 22311, 22312, 22314, 22315

Contact information

General, including referrals

Intake: enrollment@cherryblossompace.com

Email: info@cherryblossompace.com

Phone: 571-789-0770

Website: <https://cherryblossompace.com>

Community Outreach Specialist Team Norma Hardie and Abraham McGee

- Andre Atkins- Director of Growth and Enrollment Services
Email: andre.atkins@cherryblossompace.com
- Email: Norma.Hardie@cherryblossompace.com
- Phone: 240-890-1328 (c)
- Email: Abraham.McGee@cherryblossompace.com
- Phone: 571-926-1413 (c)