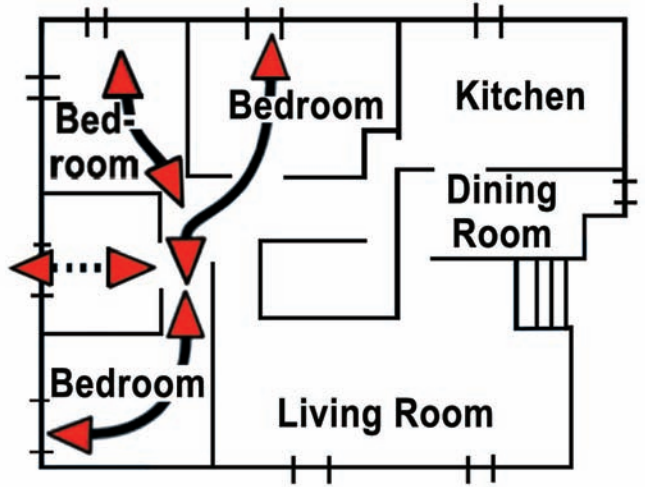




Fairfax County  
 Fire and Rescue Department  
 Public Affairs and Life Safety Education  
 703-246-3801

# Family Escape Plan

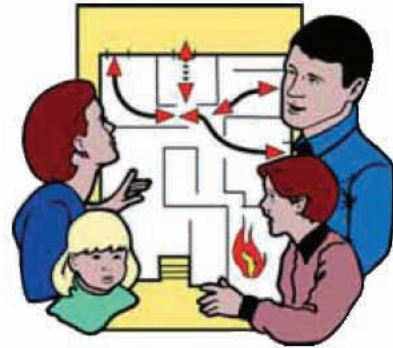



**Practice Your Escape Plan**

## Instructions: Family Escape Plan

Create a floor plan of your home using the worksheet provided. Make sure that your plan includes:

Working smoke alarms  
Two exits from each room  
An outside meeting place  
Emergency phone number for your local fire department  
Alternatives for any family member needing extra assistance



Practice your plan with all members of your household regularly, at least twice a year. Review and revise this plan twice a year, and whenever there are any changes in your household (ex: sleeping arrangements, new baby, etc.)

## Additional Preparation

- Be sure that everyone in your home can unlock and open windows if they are a part of your plan.
- If your windows have security bars, are they equipped with inside quick-release devices?
- Be certain that children can reach and open all door and window locks that are included in their part of the plan.
- When practicing your fire escape plan, explain that the firefighter's job is to rescue anyone trapped inside, so don't hide.

## Enhancing Home Escape Plans for your Child



- Visit a fire and rescue station with your children to meet the firefighters and learn about their job.
- Emphasize that firefighters and rescue personnel are your friends and helpers.
- Give your child an opportunity to see a firefighter in uniform and the protective clothing they wear known as turn-out gear.

\* It is good for children to recognize firefighters in turn-out gear and in uniform. It is important that children not run or hide when they require assistance during an emergency.