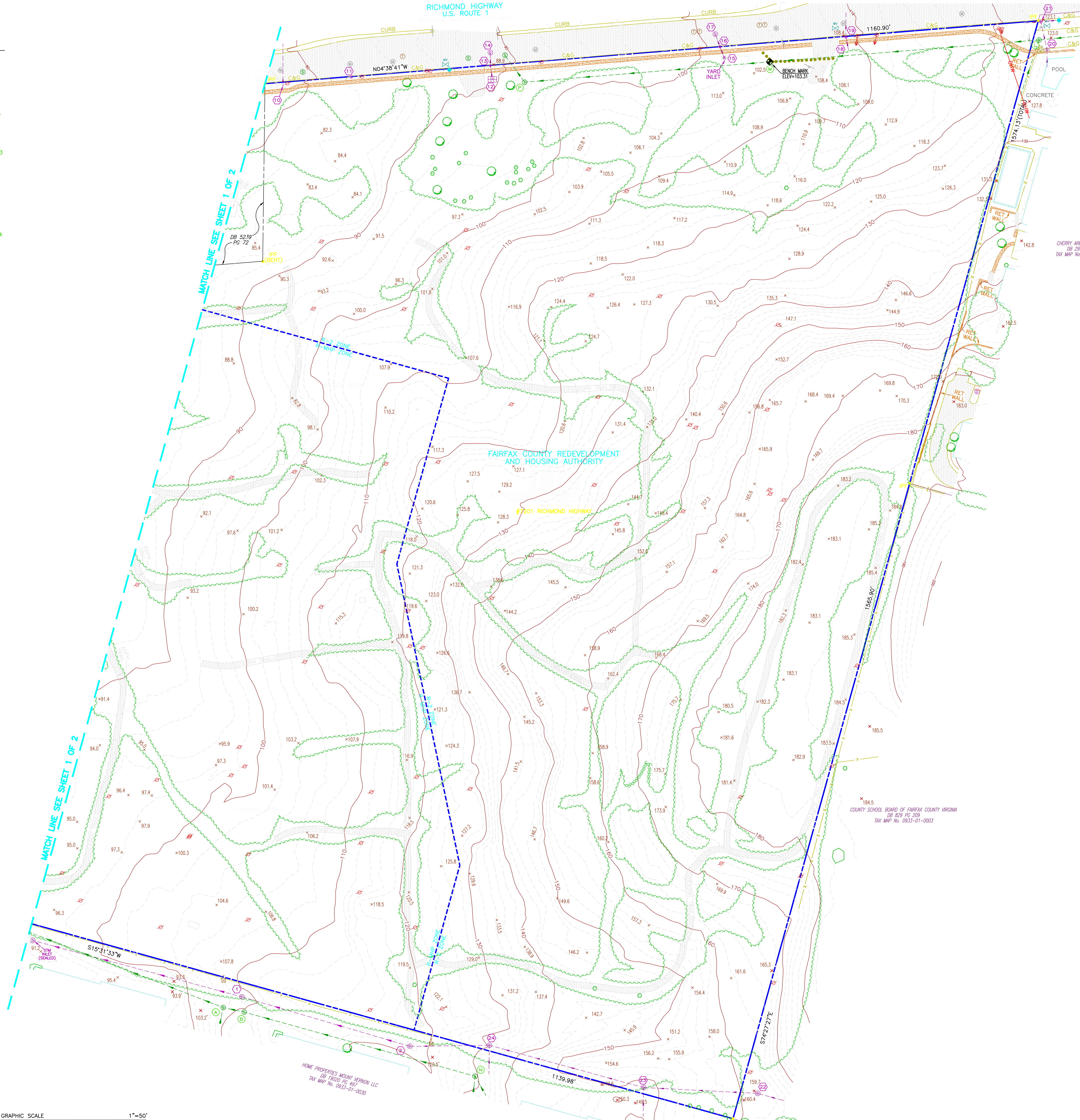
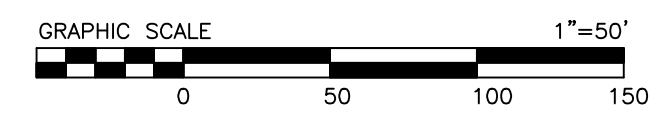


AS-BUILT INFORMATION

- ① STM MH
TOP=108.4
INV.IN(48"RCP)=102.6
INV.OUT(48"RCP)=95.8
- ② STM MH
TOP=117.9
INV.IN(48"RCP)=108.9
INV.OUT(48"RCP)=107.2
- ⑩ STM INLET
TOP=77.4
INV.OUT(18" RCP)=72.8
- ⑪ STORM MH
FILLED WITH DIRT
TOP=82.0
- ⑫ STM GRATE INLET
TOP=88.6
INV.IN(18"RCP)=85.2
- ⑬ STORM MH
TOP=89.1
INV.IN(18"RCP)=83.9
INV.OUT(21" RCP)=82.8
- ⑭ STM MH
TOP=88.9
INV.IN(21"RCP)=INACCESSIBLE
- ⑮ STORM YARD INLET
TOP=100.8
INV.OUT(15"RCP)=96.9
- ⑯ STORM MH
TOP=101.1
INV.IN(15"RCP)=96.3
INV.OUT(15"RCP)=96.2
- ⑰ STORM MH
TOP=100.7
- ⑱ STORM CULVERT
INV.IN(24"RCP)=104.9
- ⑲ STORM MH
TOP=109.1
INV.IN(24"RCP)=104.1
INV.OUT(24"RCP)=104.1
- ⑳ STORM MH
TOP=122.6
INV.IN(18"RCP)=119.7
INV.OUT(18"RCP)=119.2
- ② STORM MH
TOP=123.3
INV.IN(18"RCP)=118.0
INV.IN(24"RCP)=117.4
INV.OUT(27"RCP)=116.5
- ㉒ STORM MH
TOP=160.4
INV.IN(48"RCP)=144.3
INV.OUT(42"RCP)=139.4
- ③ STORM MH
TOP=149.5
INV.IN(42"RCP)=136.4
INV.IN(27"RCP)=139.8
INV.OUT(36"RCP)=COVERED WITH TRASH
- ㉔ STORM MH
TOP=131.7
INV.IN(36"RCP)=117.1
INV.IN(15"RCP)=117.8
INV.OUT(54"RCP)=111.2
- ④ SAN MH
TOP=107.8
INV.IN(8"DIP)=95.1
INV.IN(8"DIP)=95.1
INV.OUT(8"DIP)=94.8
- ⑤ SAN MH
TOP=110.1
INV.IN(8"DIP)=103.0
INV.OUT(8"DIP)=103.0
- ⑥ SAN MH
TOP=122.5
INV.IN(8"RCP)=110.3
INV.OUT(8"RCP)=110.3
- ⑦ SAN MH
TOP=103.3
INV.IN(8"RCP)=94.9
INV.OUT(8"RCP)=94.6
- ⑧ SAN MH
TOP=128.6
INV.IN(4"PV)=118.8
INV.IN(4"PV)=118.7
INV.OUT(8"PV)=118.4
- ⑨ SAN MH
TOP=93.4
INV.IN(8"RCP)=82.6
INV.OUT(8"RCP)=82.3



- LEGEND**
- ⊙ SANITARY MANHOLE
 - ⊙ STORM MANHOLE
 - ⊙ MANHOLE
 - SINGLE POST SIGN
 - ⊙ LIGHT POLE
 - ⊙ TRAFFIC LIGHT
 - ⊙ TELEPHONE PEDESTAL
 - ⊙ WATER VALVE
 - ⊙ FIRE HYDRANT
 - ⊙ MAILBOX
 - ⊙ TREE
 - ⊙ UTILITY POLE
 - ⊙ BENCH MARK
 - ⊙ GROUND SHOT
 - STORM DRAIN CURB INLET
 - BUILDING/MODULAR HOME/SHED
 - ① STORM SEWER ASBUILT INFORMATION
 - ② SANITARY SEWER ASBUILT INFORMATION
 - EBOX - ELECTRICAL BOX
 - GAS VALVE
 - GUY WIRE
 - ⊙ IPF - IRON PIPE FOUND
 - ⊙ CMF - CONCRETE MONUMENT FOUND
 - CONCRETE SIDEWALK
 - ASPHALT PAVING
 - OHW - OVER HEAD WIRES



HOME PROPERTIES AROUND VERNON LLC
DB R29 PG 209
TAX MAP No. 0933-01-0030

COUNTY SCHOOL BOARD OF FAIRFAX COUNTY VIRGINIA
DB R29 PG 209
TAX MAP No. 0933-01-0033

CHERRY ARMS PARTNERSHIP
DB 2091 PG 239
TAX MAP No. 0933-01-0001