



FAIRFAX COUNTY | At-A-Glance

(Human Services)

POPULATION



1,150,795

An estimated 1,150,795 people live in Fairfax County.

FOREIGN-BORN



31.1%

of the population (357,590 persons) living in Fairfax County are foreign-born.

LANGUAGE

13.6% of the total population in Fairfax County (age 5 and over) speak English less than very well.



39.2% of the total population in Fairfax County (age 5 and over) speaks a language other than English.

Population includes native and foreign-born persons.

RACE & ETHNICITY



61.1%
White alone*

9.7%
Black alone*

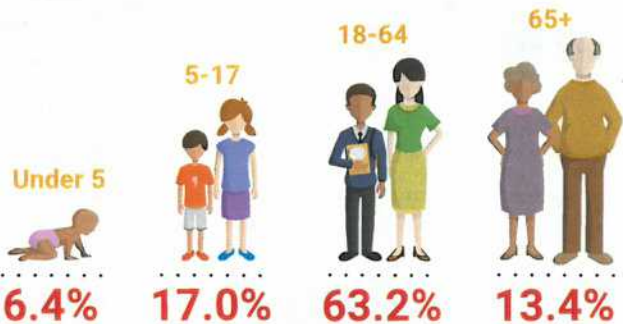
19.3%
Asian alone*

9.7%
Other**

16.4%
Hispanic

*Population of those who identify with one race.
** Includes American Indian, Pacific Islander, Some Other Race Alone and Two or More Races.

AGE



FAMILY COMPOSITION

All Families



38.9%

Single with children



8.9%

Single female with children



6.6%

HOUSES OF WORSHIP



Total Houses of Worship
546

Religious Affiliations

3 Bahai	8 Buddhism	505 Christianity	5 Hindu
1 Humanism	16 Islam	1 Jainism	13 Judaism
3 Quaker	1 Science of Mind	3 Sikhism	1 Toaism
4 Unitarian Universalist	1 Wiccan		



HOUSING

Housing Units by Type



46.1% Single Family Detached	24.1% Single Family Attached
21.5% Multifamily Low-Rise	3.0% Multifamily Mid-Rise
4.9% Multifamily High-Rise	0.4% Mobile Home

Average Monthly Rent



\$1,851
The average monthly rent for Fairfax County is estimated to be \$1,851.

Cost Burdened

44.0% of the renters in Fairfax County are cost-burdened.**



22.4% of the homeowners in Fairfax County are cost-burdened.**

** Percentage of household income spent for mortgage costs or gross rent. According to HUD programs, households spending more than 30% of income for these housing costs are considered to be "cost-burdened."

COORDINATED SERVICES PLANNING (CSP) TOP 3 CONTACT TOPICS FOR NEEDS



Rent Assistance
5207 (12.1%) inquiries*



Emergency Needs/Food
5043 (11.7%) inquiries*



Emergency Shelter
2780 (6.4%) inquiries*

*Number (and percentage) of inquiries for that contact topic in FY 2019

HEALTHCARE



8.6% of the population in Fairfax County does not have health insurance.

EDUCATIONAL ATTAINMENT



Some HS/
No Diploma
3.4%



HS Diploma
(and equivalent)
13.2%



Some College/
No Degree OR
Associates Degree
17.9%

Bachelor's
Degree
30.8%



Advanced
Degree
31.1%

Population includes persons 25 years and older

POVERTY

All People



6.2%

All Families



4.1%

Female-headed households



15.0%

Under 18



7.8%

18-64



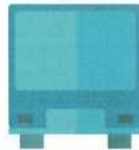
5.7%

65+



5.6%

TRANSPORTATION



9.7% of the population in Fairfax County use public transportation to commute to work.



4.3% of the households in Fairfax County have no vehicle available.

INCOME

Median Household Income



\$121,133

The median household income in Fairfax County is \$121,133.

EMPLOYMENT



71.8% of persons in Fairfax County (age 16 and over) are in the labor force.*

3.0% of persons in Fairfax County (age 16 and over) are unemployed.

*Labor force includes employed and unemployed persons seeking work.

Household Income



20.6%
Less than \$50,000

24.1%
\$50,000 - \$99,999

20.1%
\$100,000 - \$149,999

31.8%
\$150,000 or more

INDIVIDUALS WITH DISABILITIES



7.2% of the population in Fairfax County has one or more disabilities.