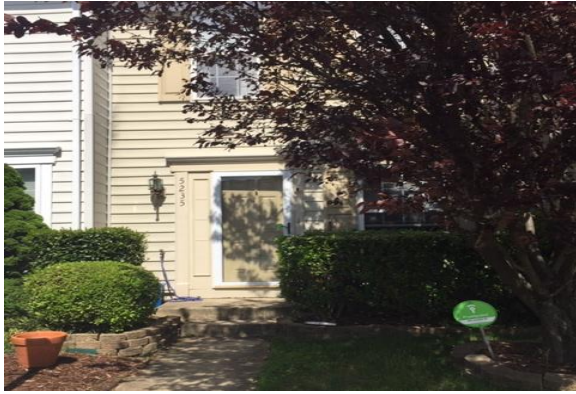


# 5235 ELBETEE LANE ALEXANDRIA, VA 22312



**Sales Price \$134,184**

## OPEN HOUSE DIRECTIONS

### From I-495

- Take I-395 North toward Washington.
- Exit Edsall Road East.
- Travel 1/2 mile to Timber Forrest Drive & turn Left at Overlook Entrance.
- Bear Left at circle to Broadwing Place with immediate Right on Hawk View Lane.
- Turn Left on Elbetee. Home is on the Left.

**Park in Unmarked Spaces**

# OPEN HOUSE

**Tuesday May 14, 2019**

**5:00 pm to 7:00 pm**

- You must attend the Open House to be eligible to purchase
- You must bring a copy of your FTHB Eligibility Certificate
- You must meet Household Size and Purchase Limit below:

**Household Size**

**2 to 4\***

**Purchase Limit**

**\$133,000**

\*Preference will be given to larger households

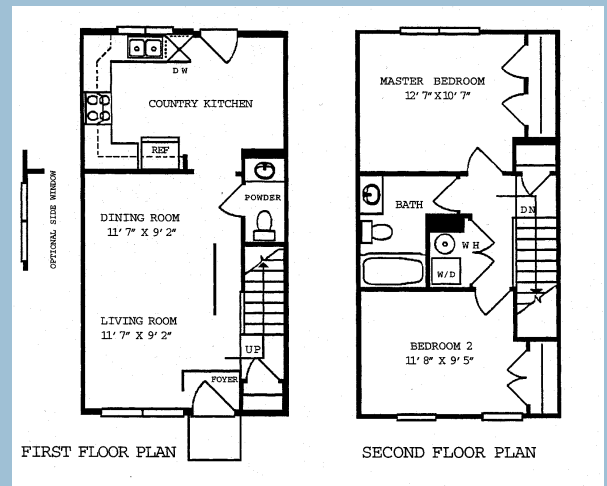
For additional information contact:

**Amanda Schlener 703-246-5153**  
**[Amanda.schlener@fairfaxcounty.gov](mailto:Amanda.schlener@fairfaxcounty.gov)**



Fairfax County is committed to a policy of nondiscrimination in all county programs, services and activities and will provide reasonable accommodations upon request. To request special accommodations, call 703-246-5101 or TTY 711. Please allow 48 hours in order to make the necessary arrangements.

## 2 Bedroom/1.5 Bath Townhouse



## Features

960 sq. ft. above grade  
2 level Townhouse

Gas heating, Upgraded appliances,  
Fenced back yard with patio  
Second floor washer & dryer

## Community Amenities

Swimming pool, clubhouse  
Tennis, volleyball,  
tot lots, nature trails

## Location

Close to I-395 Exit

## Schools

Bren Mar Park Elementary  
Holmes Middle School  
Edison High School

**\*Estimated down payment and closing costs: \$6,709**

\*May vary according to lender, type of loan, credit score and reserves. Estimate is based on 2% required down payment and up to 3% for closing costs. This estimate includes a \$1,000 good faith deposit which will be required at the time the contract is signed.

**HOA Dues: \$123 per month.** Includes common grounds maintenance and community amenities.