



# Countywide Data Efforts Updates

Michelle Gregory, Countywide Data Analytics Coordinator, DMB

Maura Power, Enterprise Business Applications, DIT

Simran Dhami, County Records Officer and Archivist, DIT

January 20, 2022

# Setting the Stage

- Building blocks of Information and Knowledge
- Governance of Data
  - Synergy across partners
- Resources for Data
  - Information Frameworks/Programs/Applications
- Today's Data Focus: Data Analytics and Data Sharing

# Countywide Data Analytics Unit: Role

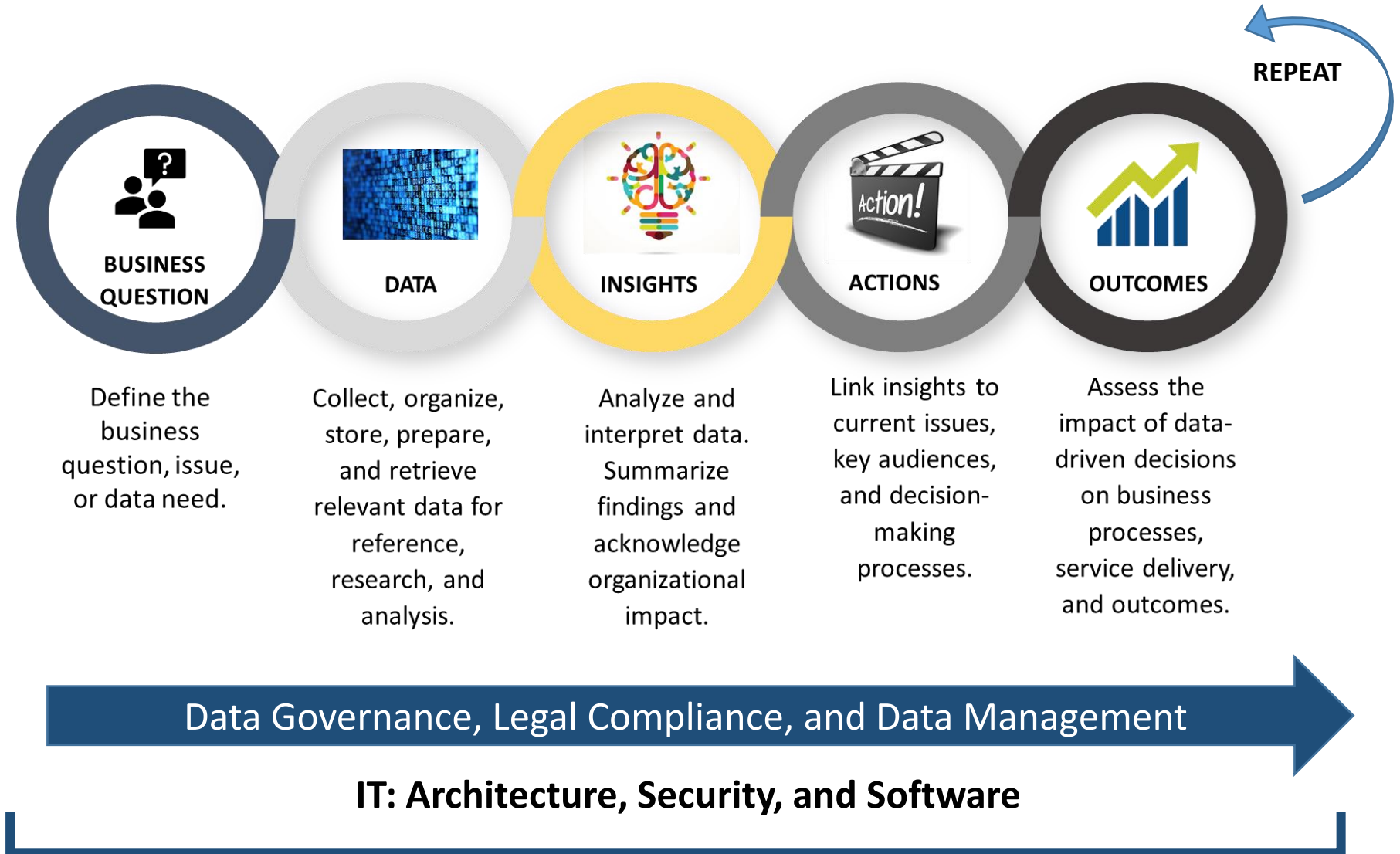
Develop policies, practices, data products and tools that increase the routine use of data for planning, problem-solving, and decision-making.

- **Increase access** to relevant data for self-service and reuse.
- **Produce actionable information** to inform priorities and guide efforts.
- Foster **continuous improvements** in the analysis, disaggregation, and dissemination of data for greater interpretation, evaluation, and accountability.

Collaborate with county partners and other stakeholders

# Data Analytics Framework

Guidelines and structure for consistent, repeatable data analytics



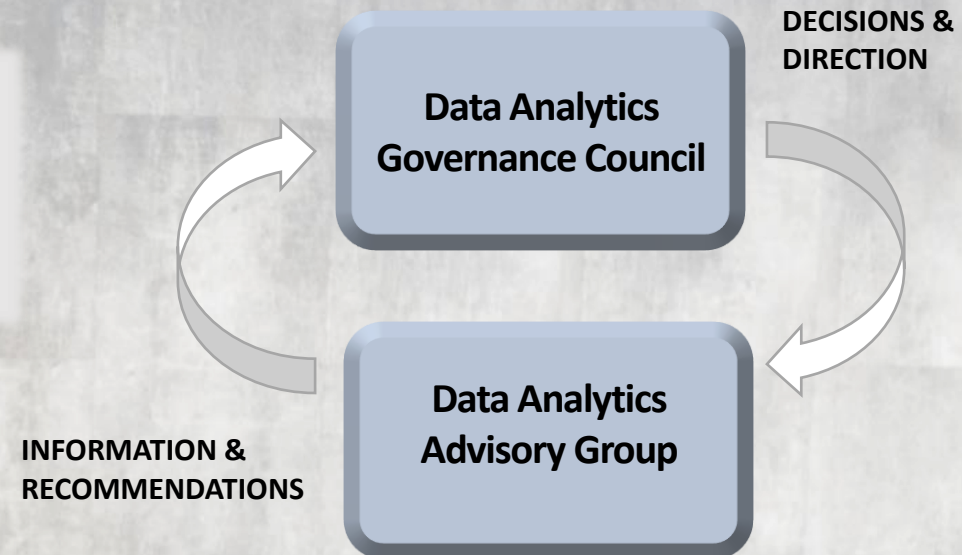
# Building a Data Analytics Framework



- **Develop a data management plan** – Outline activities, protocols, processes, resources, and stakeholders necessary to capture, store, organize, disaggregate, analyze, report, reuse, protect, and discard data assets routinely.
- **Establish enterprise data governance** – Define and document the related data policy and practices to guide enterprise data management and data analytics. Include a structure for legal review, accountability, and decision-making.
- **Create the technological infrastructure and environment** – Provide the enabling technical architecture, security, hardware, software, scalable environment, and business support framework to store, retrieve, manipulate, and share data.

# Data Analytics Governance Structure

The foundation includes a two-tiered structure, informed by staff and stakeholder needs.



# Supporting the Analytics Framework

## Operational Strategy

- Implementation of data management policies
- Countywide access to business intelligence tools
- Increased supported/facilitated training for agencies
- Changing dynamics of agency partnerships
- Technology architecture



# Supporting the Analytics Framework

## Technical Strategy

- Enterprise-Class Applications
  - Modernizing legacy applications
  - Bringing quasi-apps to enterprise standards
  - Connecting siloed data with standardization efforts
- Procurement Approach
  - Data access/ownership
  - Partnerships with business area
- Center of Excellence Model



# Supporting the Analytics Framework

## Building/Sustaining Partnerships for Data Analytics

- Sharing information management strategies and documentation
- Leveraging enterprise information assets to illustrate data insights
- Acknowledging and supporting mutual information and data challenges and goals

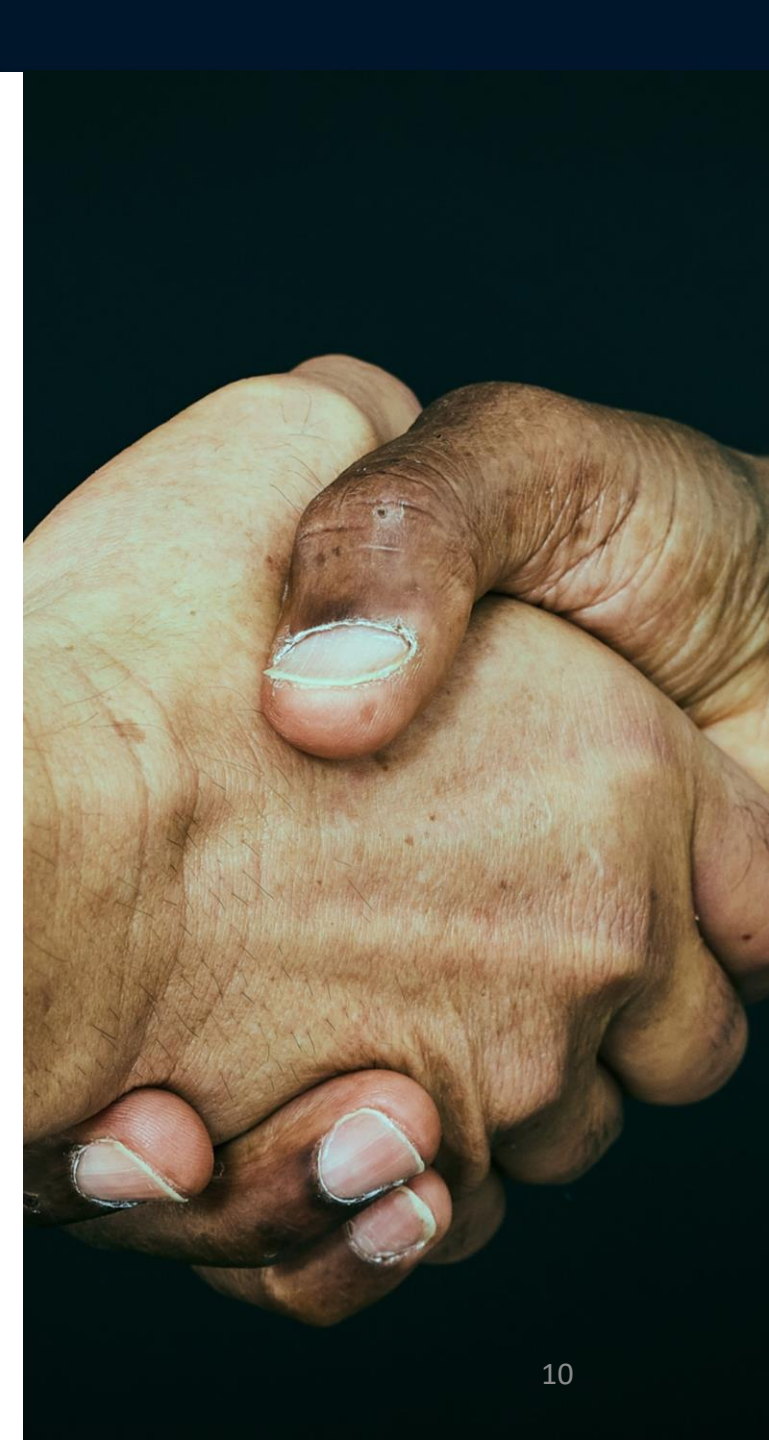


# Data Analytics/Data Sharing: Enterprise Agreements

- Support data sharing between agencies
- Build capacity in the County's analytical capabilities
- Foster sustainable partnerships
- Incorporate legal requirements

**Enterprise Memorandum of Understanding (EMOU)**

**Fairfax County and GMU Memorandum of Understanding**



# Data Analytics/Data Sharing: Outcome Evaluation

## Inform Strategic Plan indicators and metrics

- Provide information about progress being made towards addressing community outcome areas
- Disaggregate and analyze data to assess opportunities for equitable outcomes
- Develop narrative to communicate the impact



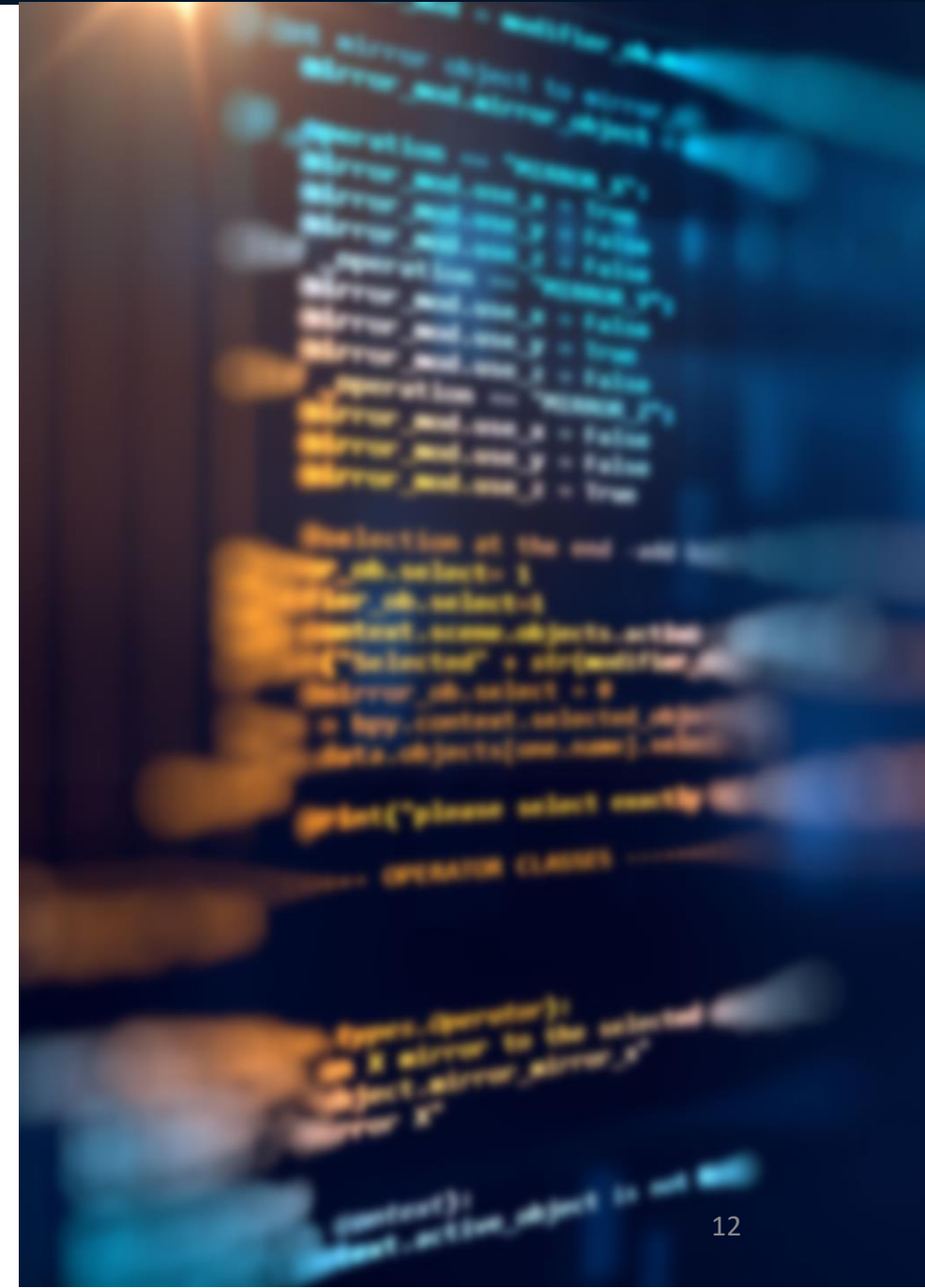
# Data Analytics/Data Sharing: Current Initiatives

## Asset Inventory

- Identify data stewards and the types of data

## Standardize demographic data collection

- Develop standards to consistently collect race, ethnicity and gender data





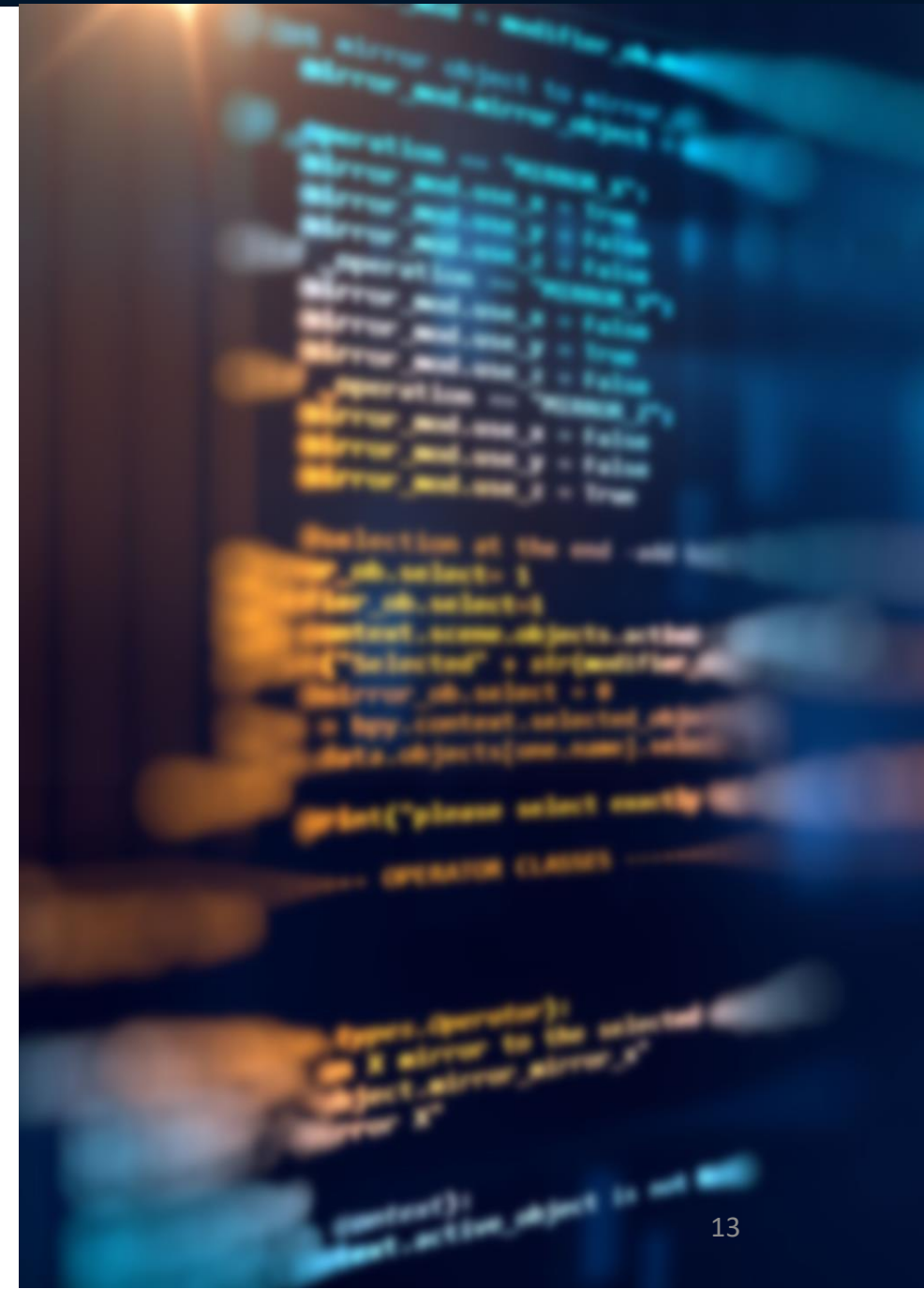
# Data Analytics/Data Sharing: Current Initiatives

## Application Inventory

- Attributes and meta data on all County applications

## Evaluation and Establishment of Enterprise Resources

- Esri, Microsoft, etc.



# Questions?