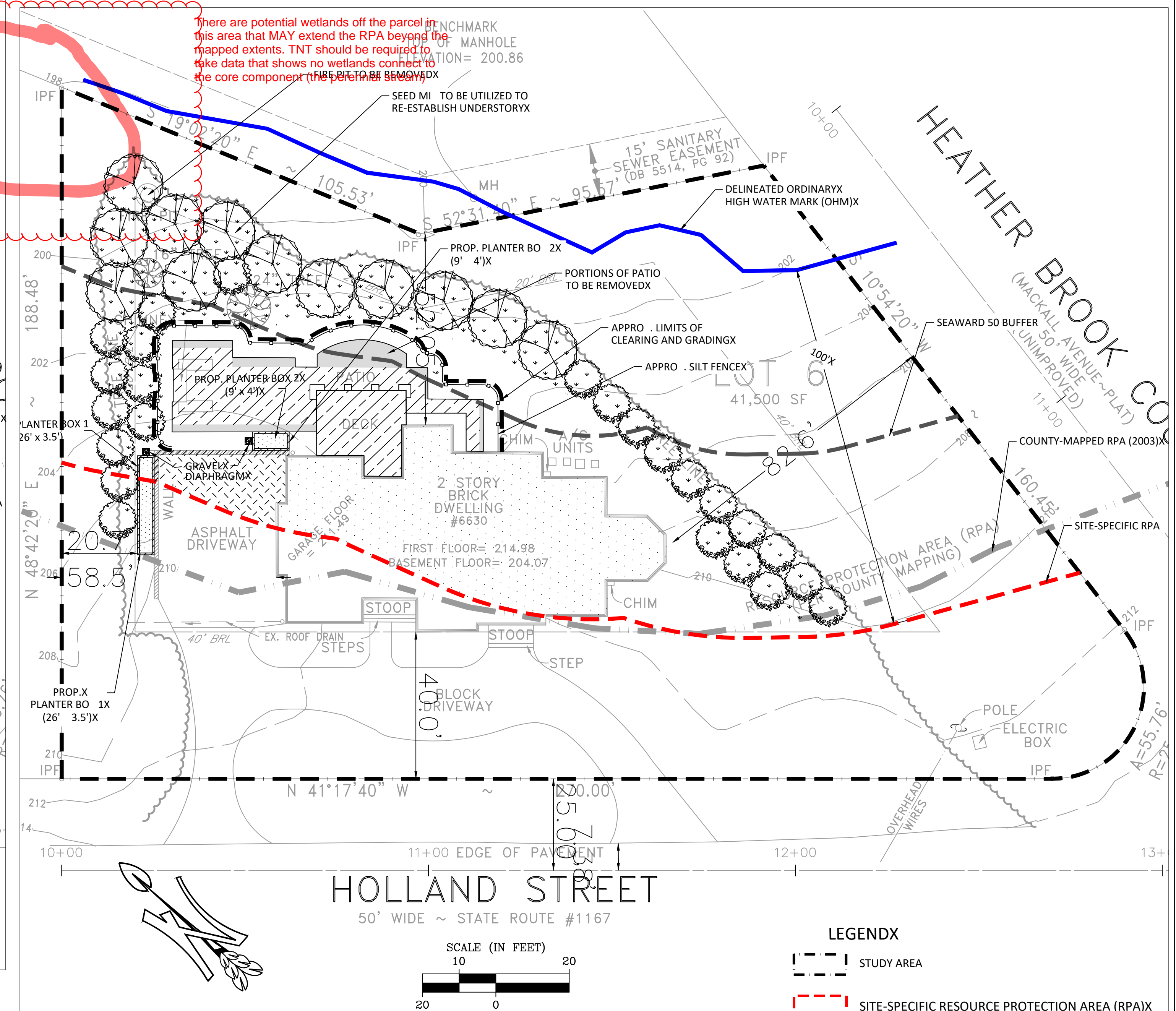


PROPOSED CONDITIONS & RPA REVEGETATION PLANX



There are potential wetlands off the parcel in this area that MAY extend the RPA beyond the mapped extents. TNT should be required to take data that shows no wetlands connect to the core component of the RPA.

HOLLAND STREET
50' WIDE ~ STATE ROUTE #1167

HOLLAND STREET
50' WIDE ~ STATE ROUTE #1167

Project Data Sheet - 6630 Holland Street

Total Lot Area (S.F.)	41,500
Lot Area within RPA (S.F.)	25,819
% Lot Area within RPA	62%
Date When the Lot was Created	2000
Date When RPA was designated	2003
Total Lot Disturbed Area Associated with the N.O.V. (S.F.)	6,398
Total Disturbed Areas within RPA Associated with the N.O.V. (S.F.)	6,398

Summary: Impervious Area Analysis Tabulation						
Description	2002 Conditions* (RPA Establishment)	2004 Conditions (Approved Plans)	2019 Conditions (Existing)	Proposed Conditions	Change in Impact (2019 vs. Proposed)	Change in Impact (2002 vs. Proposed)
Total Lot Impervious Area (S.F.)	2,450	9,136	10,453	10,122	-331	7,672
Total Impervious Area in RPA (S.F.)	2,120	3,873	5,190	4,859	-331	2,739
Impervious Area within Seaward 50 ft RPA (S.F.)	-	100	100	0	-100	-

Detailed Breakdown: Impervious Area Analysis Tabulation						
Description	2002 Conditions*	2004 Conditions	2019 Conditions	Proposed Conditions	Change in Impact (2019 vs. Proposed)	Change in Impact (2002 vs. Proposed)
Primary Structure Footprint (S.F.)	2,070	4,248	4,248	4,248	0	2,178
Primary Structure Footprint in RPA (S.F.)	1,740	3,303	3,303	3,303	0	1,563
Total Deck (S.F.)	380	31	31	31	0	-349
Total Deck in RPA (S.F.)	380	31	31	31	0	-349
Total Patio, Masonry Grill, & Chimney (S.F.)	0	0	1,317	986	-331	986
Total Patio, Masonry Grill, & Chimney in RPA (S.F.)	0	0	1,317	986	-331	986
Total Driveway (S.F.)	-	4,773	4,773	4,773	0	-
Total Driveway in RPA (S.F.)	-	490	490	490	0	-
Total Wall (S.F.)	0	84	84	84	0	84
Total Wall in RPA (S.F.)	0	49	49	49	0	49

*These totals are approximate and were calculated using the 2002 aerial. There is no available 2003 aerial when the RPA was established onsite. The driveway was not visible in the available aerial and has not been included.

PROPOSED PLANTING SCHEDULEX

Common Name	Scientific Name	Size (DBH)	Quantity
Overstory Trees			
Willow Oak	<i>Quercus phellos</i>	2"	3
Blackgum	<i>Nyssa sylvatica</i>	2"	2
Red Maple	<i>Acer rubrum</i>	2"	2
Sweetgum	<i>Liquidambar styraciflua</i>	2"	2
River Birch	<i>Betula nigra</i>	2"	3
			Subtotal
Understory Trees			
American Hornbeam	<i>Carpinus caroliniana</i>	1"	6
Eastern Redbud	<i>Cercis canadensis</i>	1"	6
Sassafras	<i>Sassafras albidum</i>	1"	6
Downy Serviceberry	<i>Amelanchier arborea</i>	1"	6
			Subtotal
Shrubs			
Northern Spicebush	<i>Lindera benzoin</i>	3 Gallon	26
Hazel Alder	<i>Alnus serrulata</i>	3 Gallon	26
Maple-Leaved Viburnum	<i>Viburnum acerifolium</i>	3 Gallon	26
Southern Arrowwood	<i>Viburnum dentatum</i>	3 Gallon	25
Swamp Azalea	<i>Rhododendron viscosum</i>	3 Gallon	25
			Subtotal
			Total

GENERAL NOTESX

- THE RESOURCE PROTECTION AREA IS BASED ON TNT'S FIELD DELINEATION IN 2019. X E ISTING CONDITION AND TOPOGRAPHY WERE SURVEYED BY CRES ENGINEERINGX SERVICES (2019) AND WETLAND FLAGS WERE SURVEYED BY TRI-TEK ENGINEERING, X INC. (2019) X
 - VEGETATION REMOVAL APPEARS TO HAVE OCCURRED BETWEEN THE 2017 ANDX 2019 AERIALS ACCESSED THROUGH FAIRFA COUNTY GIS. X
 - PROPOSED RPA REVEGETATION IS BASED OFF THE LIMITS OF CLEARING ANDX GRADING FOR THE PATIO/GRILL CONSTRUCTION AND VEGETATION REMOVEDX BETWEEN 2017 AND 2019 (APPRO . 5,081 SQUARE FEET). X
 - PORTIONS OF THE THE PATIO WITHIN THE RPA AND SEAWARD 50 WILL BEX REMOVED. THE PROPOSED PORTIONS TO BE REMOVED ARE SHOWN ABOVE IN GRAY. X
 - THE PLANTINGS PROPOSED HEREON WILL BE INSTALLED BY HAND WHEREVERX PRACTICABLE. SUB-CANOPY AND SHRUB LAYERS WILL BE RE-ESTABLISHED WHEREX POSSIBLE BY THE PROPOSED PLANTING OPERATIONS WITHIN A CONTINUOUS MULCHX BED. X
- RPA BUFFER ANALYSIS: X
- THE ONSITE RPA BUFFER IS COMPRISED OF THOSE COMPONENTS THAT AREX IDENTIFIED UNDER § 6-1704.2A THROUGH § 6-1704.2D OF THE FAIRFA COUNTY PFMX WHICH ARE SUBJECT TO RESOURCE PROTECTION AREA (RPA) BUFFER PROTECTION. X

THERE ARE NO WETLANDS OR FLOODPLAINS CONTAINED WITHIN THE SITE-SPECIFICX RPA, AS SHOWN HEREON. THERE ARE NO TIDAL SHORE/TIDAL WETLANDS LOCATEDX ONSITE. THE SITE-SPECIFIC RESOURCE PROTECTION AREA IS BASED OFF OF THE 100'X OFFSET FROM THE FIELD-DELINEATED PERENNIAL STREAM. X

RPA NARRATIVE: X

§ 6-1704.4 (94-06-PFM) WATER BODIES WITH PERENNIAL FLOW WERE IDENTIFIEDX USING THE FAIRFA COUNTY PERENNIAL STREAM FIELD IDENTIFICATION PROTOCOLX (MAY 2003). X

§ 6-1704.5 WETLAND DETERMINATIONS WERE PERFORMED USING METHODS X SPECIFIED BY THE UNITED STATES ARMY CORPS OF ENGINEERS (USACE). X

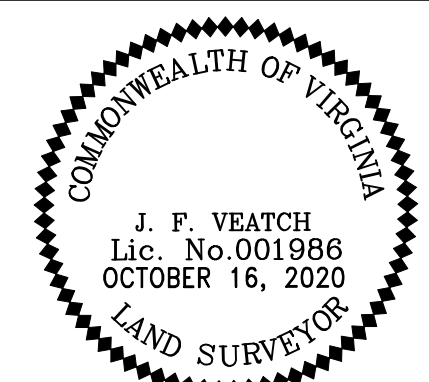
§ 6-1704.6 THE RPA BOUNDARY DELINEATION STUDY HAS BEEN CONDUCTED ANDX VERIFIED BY A LICENSED WETLAND DELINEATOR CERTIFIED TO PRACTICE IN THE X COMMONWEALTH OF VIRGINIA. X

THE SURVEY WAS PROVIDED BY CRES ENGINEERING SERVICES AND TRI-TEK X ENGINEERING, INC. AND IS BASED ON THE NVGD29 DATUM. X

THIS RPA BOUNDARY DELINEATION HAS BEEN COMPILED IN ACCORDANCE WITH § X 6-1704.8A THROUGH § 6-1704.8E. X

LEGENDX

- STUDY AREA
- SITE-SPECIFIC RESOURCE PROTECTION AREA (RPA)X
- COUNTY-MAPPED RPA
- APPRO . LCG FOR PAST CONSTRUCTION IN RPA
- VEGETATION REMOVAL AREA (PER 2019 AERIAL)X
- PRIMARY STRUCTURE FOOTPRINT IN RPA
- DRIVEWAY IN RPA
- WALL IN RPA
- PATIO, GRILL, & CHIMNEY IN RPA
- PATIO, GRILL, & CHIMNEY IN SEAWARD 50X
- FIRE PIT IN RPA
- E ISTING TURF AREA
- PORTION OF PATIO TO BE REMOVEDX
- PROPOSED SHRUB PLANTING AREA
- PROPOSED OVERSTORY TREE X
- PROPOSED UNDERSTORY TREE



EXISTING CONDITION AND TOPOGRAPHIC CERTIFICATION
THIS EXISTING CONDITIONS AND TOPOGRAPHIC SURVEY WAS COMPLETED UNDER THE DIRECT AND RESPONSIBLE CHARGE OF J.F. VEATCH, SR FROM AN ACTUAL GROUND SURVEY, MADE UNDER MY SUPERVISION; ON DECEMBER 27, 2018; AND THAT THIS PLAT MEETS THE MINIMUM ACCURACY STANDARDS UNLESS OTHERWISE NOTED:



ENVIRONMENTAL
4455 Brookfield Corporate Drive, Suite 100f
Chantilly, VA 20151f
PH: 703-466-5123f WWW.TNTENVIRONMENTALINC.COM

6630 HOLLAND STREET
FAIRFAX COUNTY

WATER QUALITY IMPACT ASSESSMENT

REVISIONS:

DATE	REV BY	COMMENTS
3/10/20	REV BY TNW	
7/29/20	REV BY TNW	
9/21/20	REV BY TNW	

SHEET 4 OF 5
SCALE: 1" = 20'
PROJECT DATE: 11/15/19
DRAFT: TNW CHECK: AMS
FILE NUMBER: 1426