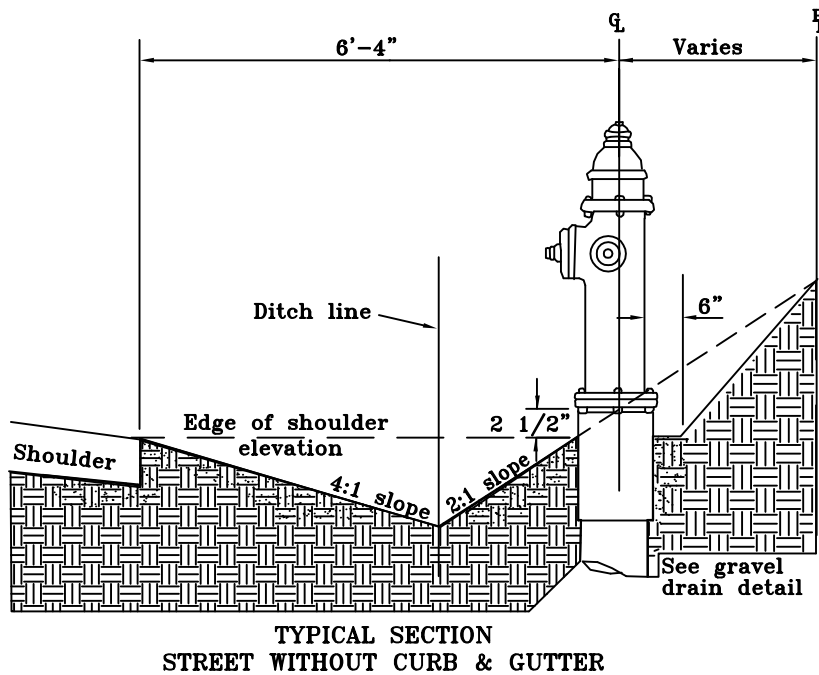
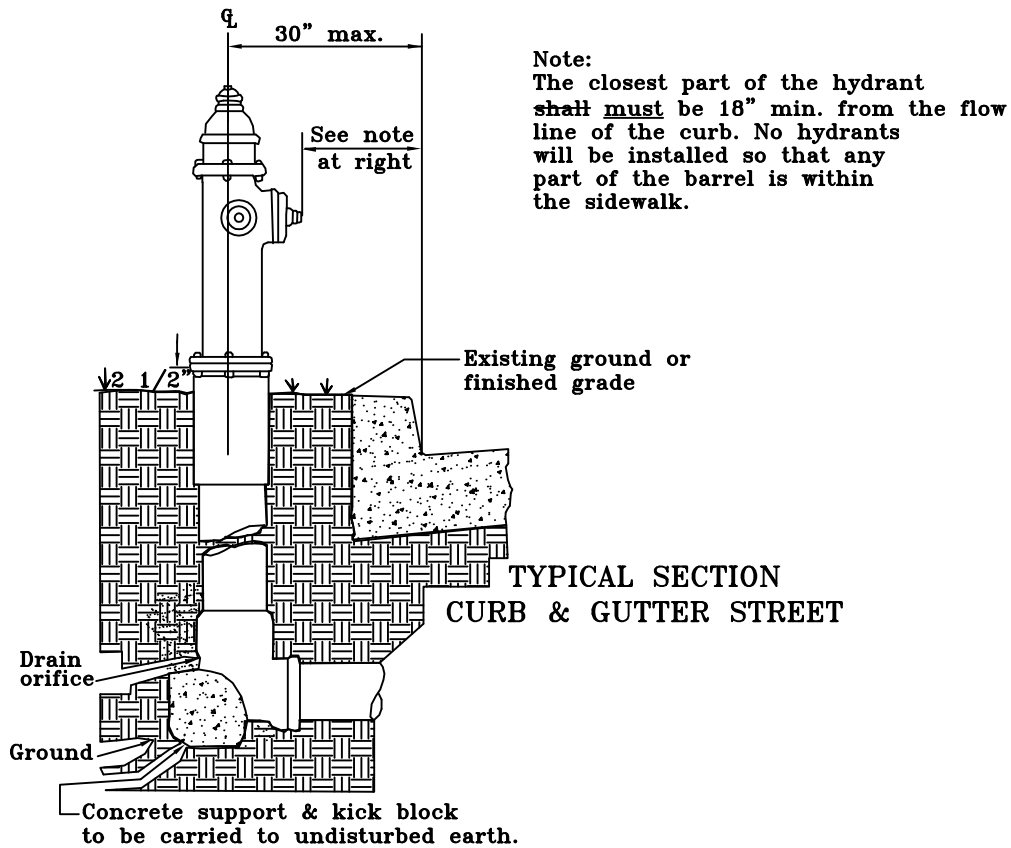


FAIRFAX COUNTY PUBLIC FACILITIES MANUAL



Ref. Sec. 9-0202.
9-0202.2B

Rev. 1-00, 5-07, 2011
Reprint, 2018 Reprint

LOCATION OF FIRE HYDRANTS

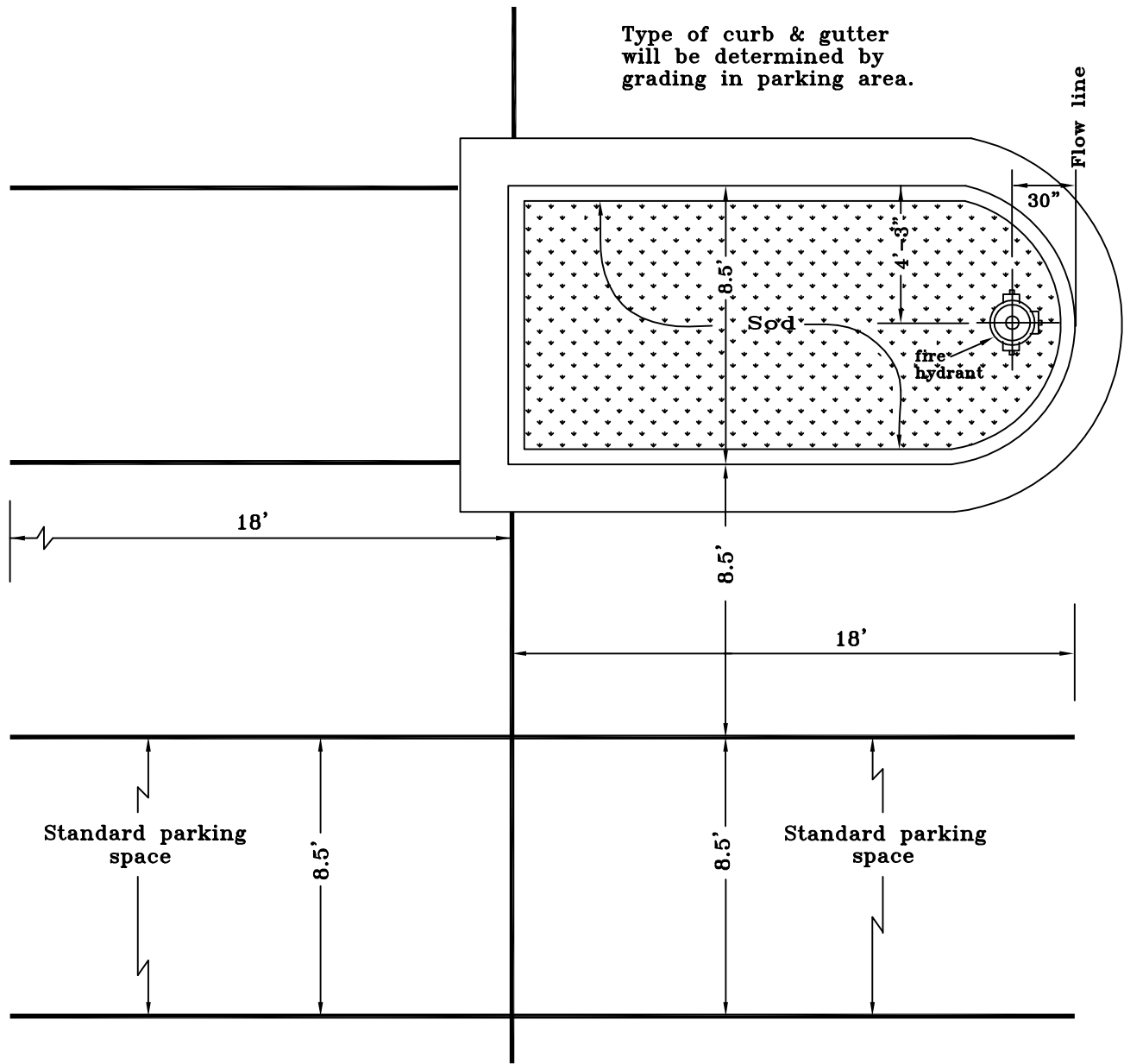
PLATE NO.

1-9

STD. NO.

FH-1

FAIRFAX COUNTY PUBLIC FACILITIES MANUAL



Ref. Sec. 9-0202,
9-0202.2B

Rev. 1-00, 5-07, 2011
Reprint, 2018 Reprint

STANDARD FIRE HYDRANT ISLAND-PARKING AREA

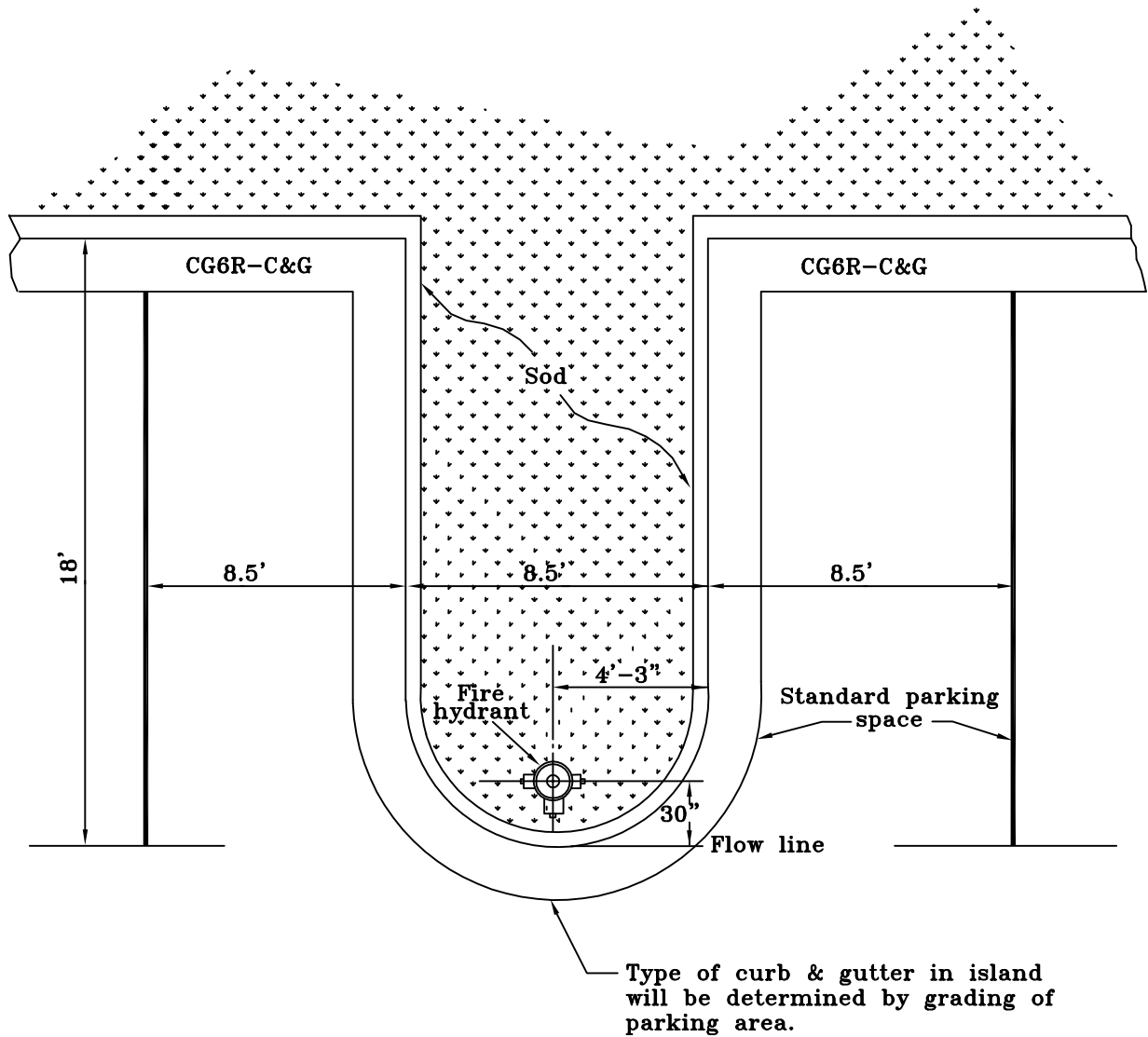
PLATE NO.

2-9

STD. NO.

FH-2

FAIRFAX COUNTY PUBLIC FACILITIES MANUAL



Ref. Sec. 9-0202,
9-0202.2B

Rev. 1-00, 5-07, 2011
Reprint, 2018 Reprint

STANDARD FIRE HYDRANT ISLAND PARKING AREAS

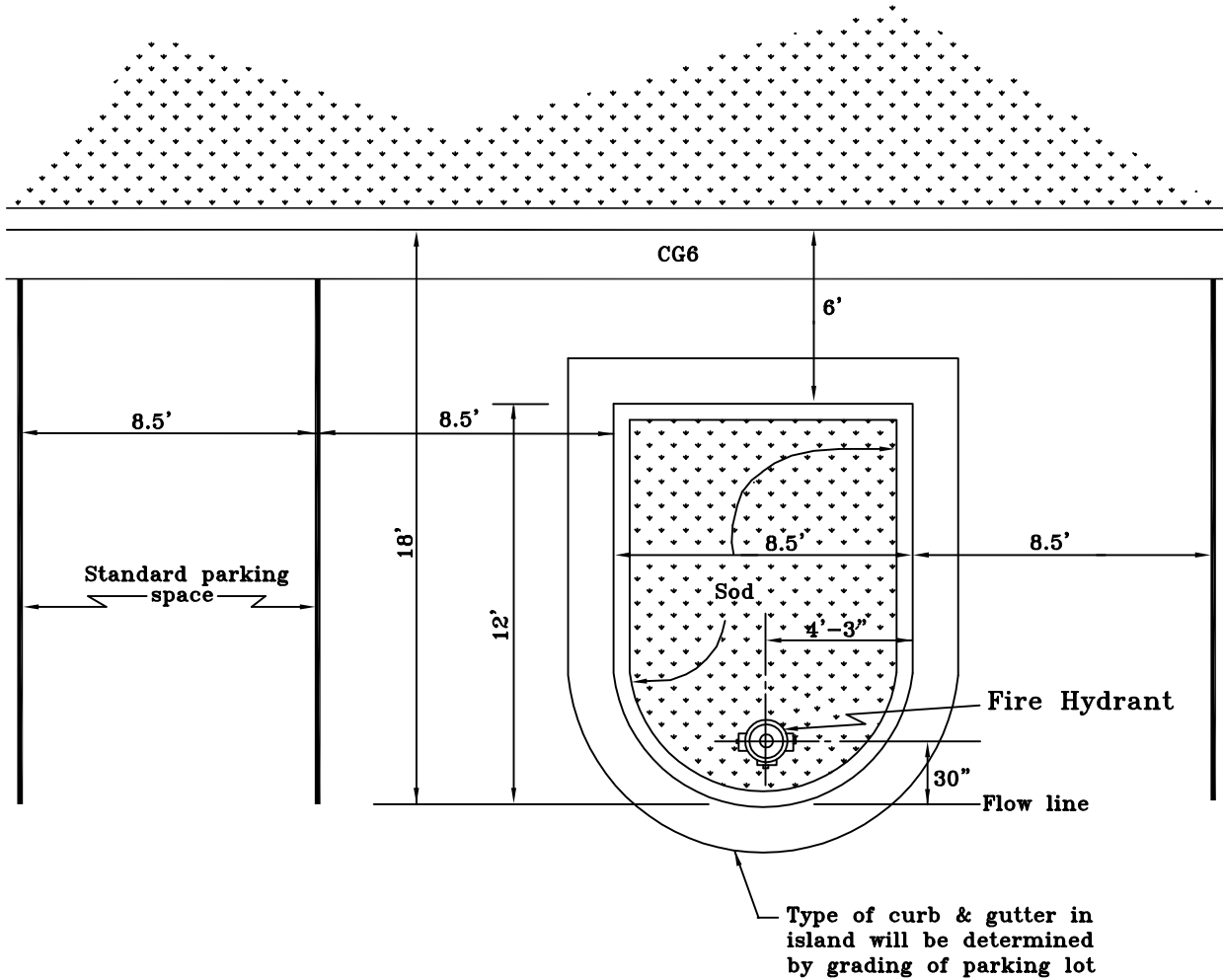
PLATE NO.

STD. NO.

3-9

FH-3

FAIRFAX COUNTY PUBLIC FACILITIES MANUAL



Ref. Sec. 9-0202,
9-0202.2B

Rev. 1-00, 5-07, 2011
Reprint, 2018 Reprint

STANDARD FIRE HYDRANT ISLAND - PARKING

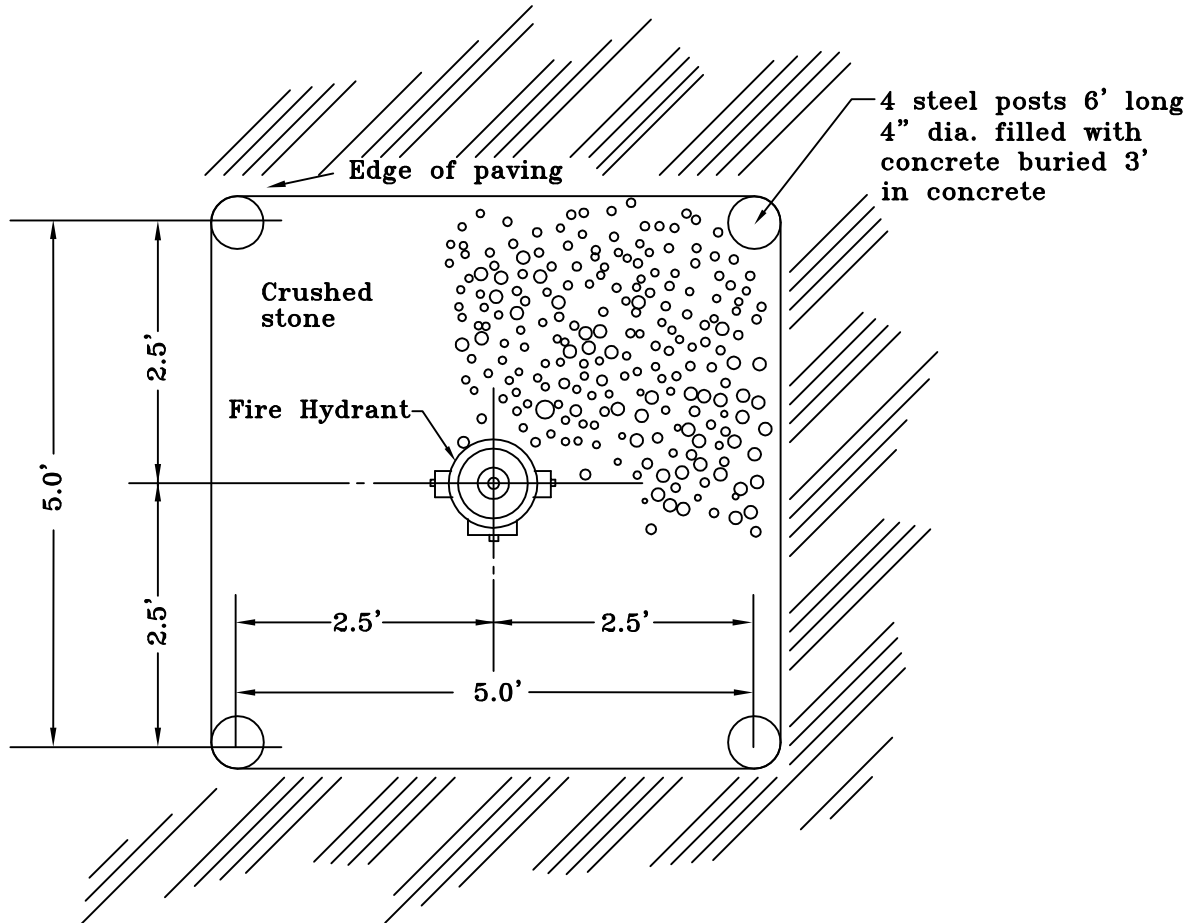
PLATE NO.

4-9

STD. NO.

FH-4

FAIRFAX COUNTY PUBLIC FACILITIES MANUAL



Ref. Sec. 9-0202,
9-0202.1E, 9-0202.2B

FIRE HYDRANT PROTECTION IN AREA WHERE ISLAND CANNOT BE CONSTRUCTED

PLATE NO.

STD. NO.

5-9

FH-5

Ref. 1-00, 2011 Reprint,
2018 Reprint

FAIRFAX COUNTY PUBLIC FACILITIES MANUAL

FIRE LANE DESIGNATIONS

Under Section 503 of the Fairfax County Fire Prevention Code, the Office of the Fire Marshal is authorized to designate fire lanes on public streets and on private property where necessary. This is to prevent parking in front of, or adjacent to, fire hydrants and to provide access for fire fighting equipment. Markings and signs are to be provided by the owner or agent of the property involved. Parking or otherwise obstructing such areas is prohibited.

I. HYDRANTS

- A. Parking is prohibited within 15' of a fire hydrant located along the curb line or edge of any public or private roadway. No special curb marking is required for enforcement.
- B. Fire hydrants installed in parking lots are to be located within a fire lane. Curb and/or roadway marking is required in accordance with Sections III and IV below.

II. FIRE LANES

- A. Fire lanes shall must be installed where required by the office of the Fire Marshal. Fire lanes shall must be marked with both sign and curb delineation per Section III and IV below. Parking and fire lane markings shall be are required as follows.

Street Width Curb to Curb or Paved Surface	Parking	Fire Lane Markings
Up to 28 feet	No parking allowed on either side	Both sides marked as fire lanes
28 feet up to 36 feet	Parallel parking allowed on one side as determined by the fire code official	One side marked as a fire lane
36 feet and over	Parallel parking allowed on both sides	No fire lane markings required Exception: Required access to pools, fire department apparatus access roads and similar areas shall <u>must</u> be marked as fire lanes

SIGN TYPE "A"



Standard wording with an arrow at bottom pointing to the right. One sign mounted parallel to the line of curbing or pavement edge at end of painted area.

SIGN TYPE "C"



Standard wording with an arrow at bottom pointing to the left. One sign mounted parallel to the line of curbing or pavement edge at end of painted area.

SIGN TYPE "D"



Standard wording with no arrow. Two signs, back to back, mounted perpendicular to line of curbing or pavement edge.

III. SIGN SPECIFICATIONS

- A. Metal construction, 12" X 18".
- B. Red letters on reflective white background with 3/8" red trim strip around entire outer edge of sign.
- C. Lettering on sign to be: "NO PARKING OR STANDING FIRE LAND".
- D. Lettering size to be as follows: "NO PARKING" and "STANDING" is 2", "OR" is 1", "FIRE LANE" is 2 1/2" and the arrow with the solid shaft is 1" x 6" with the solid head 1 1/2" wide and 2" deep.
- E. Signs are to be mounted 7' from the ground to the bottom of the sign unless otherwise directed by the Office of the Fire Marshal.
- F. Post for signs, when required, shall must be metal and securely mounted, unless written permission for alternative is obtained prior to installation from the Office of the Fire Marshal. Signs should be spaced as shown on approved plans. In long stretches, the maximum distance between signs is 100'.
- G. Other special signs may be approved by the Office of the Fire Marshal.

IV. CURB DESIGNATION

- A. All curbs or paved spaces designated as fire lanes shall must be indicated by yellow paint as approved by the Office of the Fire Marshal. In areas without curbing, a 6" wide yellow stripe shall must be applied to the edge of the pavement. Paint shall must be highway traffic grade.

Note: Fire lane markings, types of signs, locations, etc. shall be are subject to the approval by the Fire Marshal.

Ref. Sec. 9-0202.2J(5)

FIRE LANES

PLATE NO.

STD. NO.

Rev. 1-00, 2-07, 2011 Reprint, 2018 Reprint

6-9

FH-7