



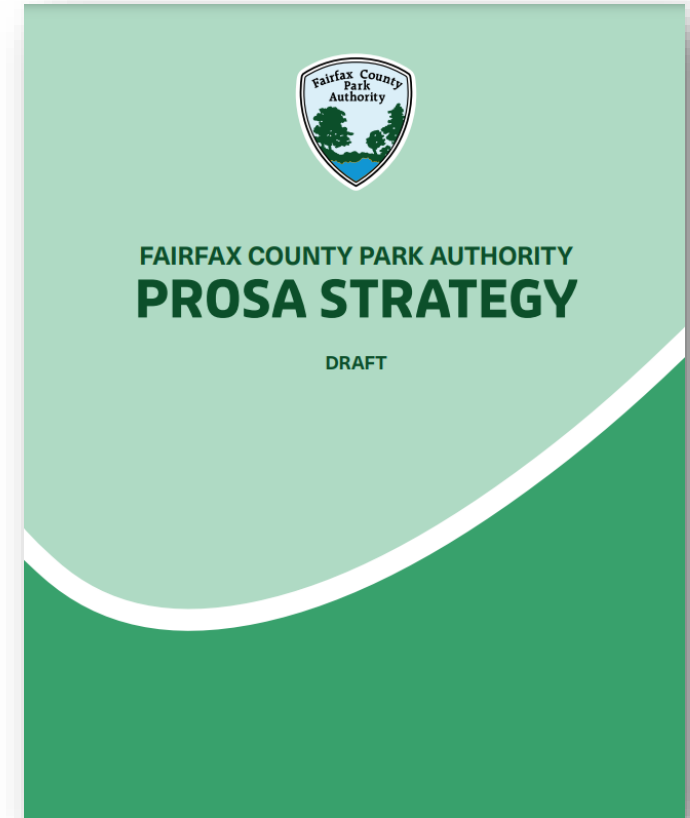
Parks, Recreation, Open Space, and Access (PROSA) Strategy

Fairfax County Athletic Council Meeting
July 19, 2023

Stephanie Cornejo, Long Range Planning
Section Supervisor

Agenda

- Project Overview & Schedule
- Public Engagement Phase 2
- PROSA Draft Summary Report Overview



Park Authority Mission

To enrich quality of life for all members of the community through an enduring park system that provides a healthy environment, preserves natural and cultural heritage, offers inspiring recreational experiences, and promotes healthy lifestyles.

Primary Guiding Principles



Inspire a Passion for Parks



Be Great Stewards



Strengthen and Foster Partnerships



Meet Changing Recreation Needs



Promote Healthy Lifestyles



Be Equitable and Inclusive



Advance Park System Excellence



American Alliance of Museums

Parks & Recreation System Master Plan Goals

Improve access and opportunities for healthy and active lifestyles.

Ensure protection, conservation, preservation, and interpretation of cultural resources.

Improve and promote natural resource protection and management.





Advance Park
System Excellence


Be Equitable and
Inclusive


Meet Changing
Recreation Needs


Promote Healthy
Lifestyles


Inspire a Passion
for Parks


Be Great
Stewards


Strengthen and
Foster Partnerships

Strategic Plan FY19 - FY23 Objectives

Balance natural resources, cultural resources, recreational needs, and equity in planning and developing a sustainable park system.

Position the Park Authority as the model organization for increasing physical activity and wellness in Fairfax County.

Increase walkable access (1/4-mile or 5 minute-walk (urban) and 1/2 mile walk or 10-minute walk (countywide)) by County residences to park or facility entrances or trailheads to connect people to nature and recreational experiences.

Increase the Park Authority's land holdings based on a proactive and informed decision-making strategy.



PROSA Objectives

PROSA advances County Strategic Plan priorities



Project Schedule

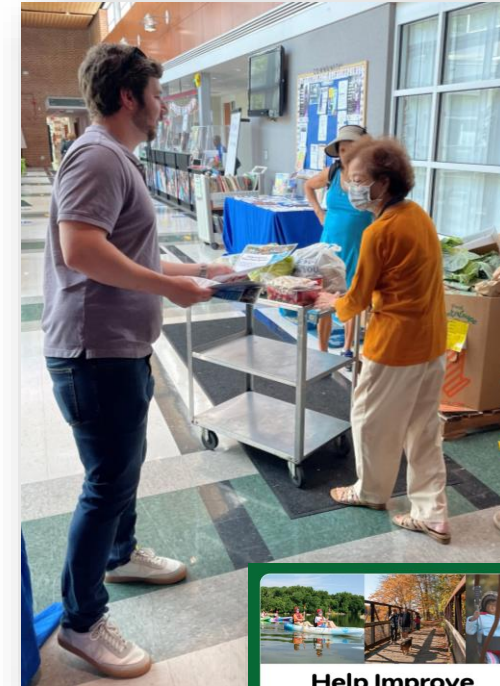
Project Phases	Timeline
Phase 1: Supplemental Data Gathering and Background Research	Completed ✓
Phase 2: Analysis and Preliminary Report Development	Completed ✓
Phase 3: Public Engagement and Report Development	Completed ✓
Phase 4: Public Feedback on Draft Report Summary	Summer 2023
Phase 5: Revise Final Report	Summer 2023
Phase 6: PROSA Strategy Report Approval	Summer/Fall 2023

Public Engagement

Phase 1: October – December 2022 – Values of the Community
Bridging Phases 1 & 2: Focus Groups
Phase 2: July 7 – August 6, 2023 – Draft PROSA Strategy Report

Phase 2 Core Elements

- Project webpage
- Two (2) virtual community meetings (7/18 & 7/25)
- Survey focusing on feedback on the Draft PROSA Strategy Summary Report (7/7 – 8/6)
- Conduct in-person outreach at nine (9) community events, one in each BOS district
- Multilingual flyers, survey, and communications toolkit




Help Improve Your Park System!

The Fairfax County Park Authority (FCPA) is developing the Parks, Recreation, Open Space, and Access (PROSA) Strategy which will provide a framework for equitable access to FCPA parks and the park system.

Opportunities to Provide Input

- 1 Participate in a virtual public meeting
- 2 Take the community survey
- 3 Sign up for project updates

Giúp Cải Thiện Hệ thống Công viên của bạn!

Cơ quan Công viên hạt Fairfax (FCPA) đang phát triển Chiến lược Công viên, Giải trí, Không gian mở, và Tiếp cận được (PROSA) nhằm mang lại giải pháp giúp các công viên của FCPA và hệ thống công viên được tiếp cận rộng rãi và công bằng hơn.

Cơ hội để Đóng góp ý kiến

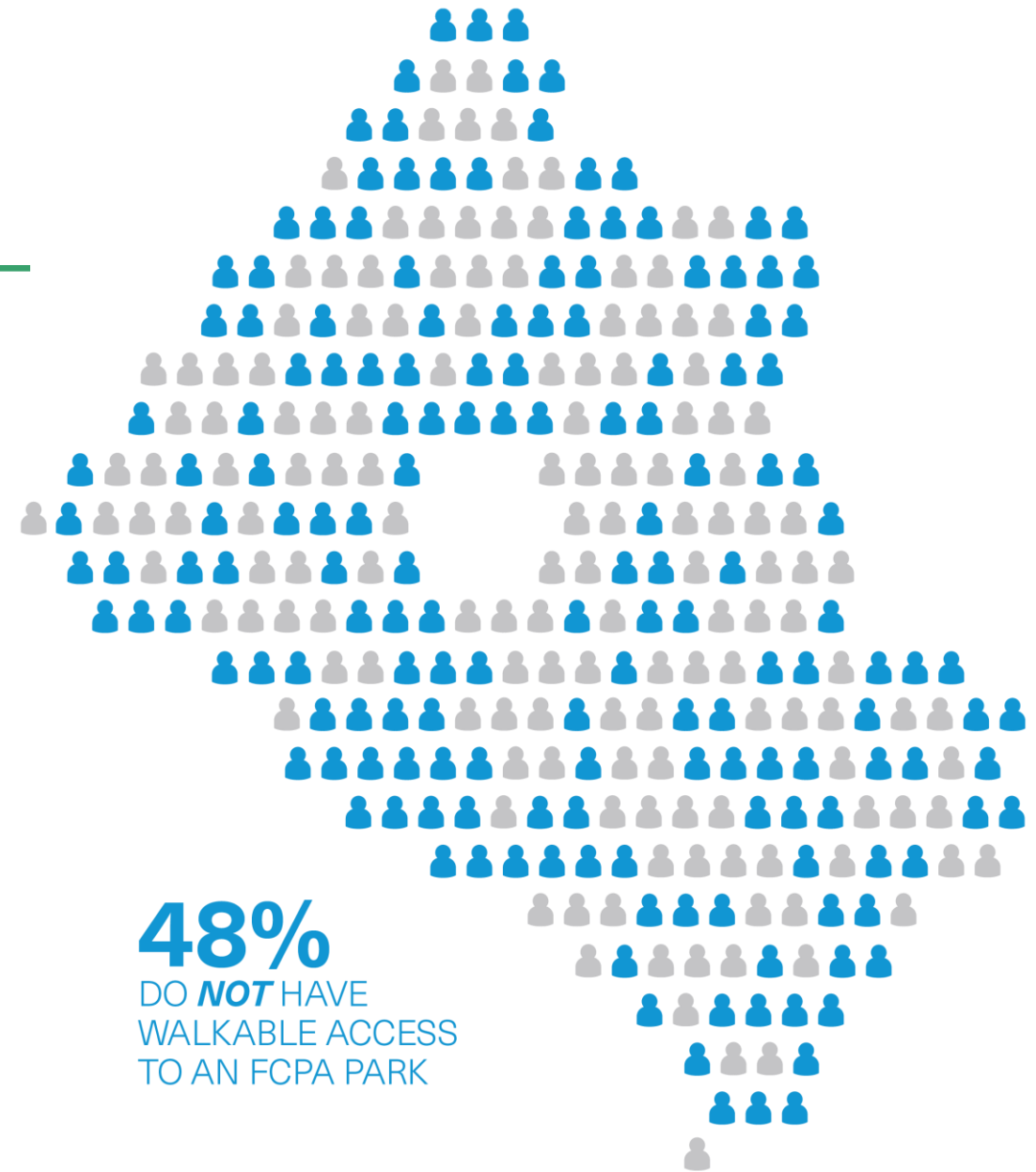
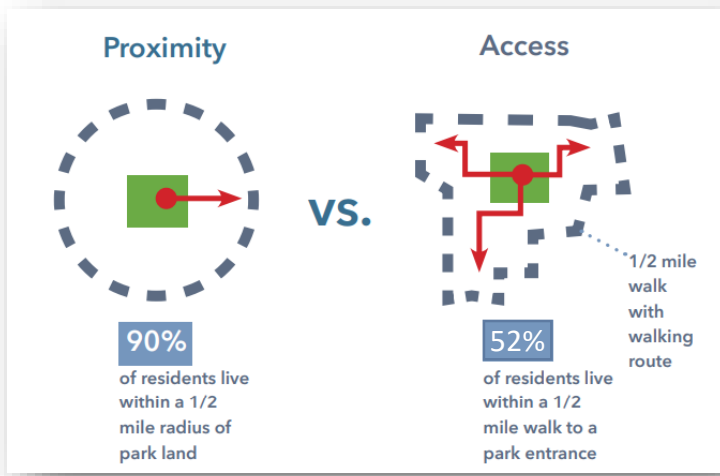
- 1 Tham gia vào buổi họp trực tuyến
- 2 Thực hiện khảo sát cộng đồng
- 3 Đăng ký ngay để được cập nhật thêm về dự án.

PROSA
Parks • Recreation • Open Space • Access

<https://bit.ly/fcpa-prosa>

10-minute Walk Access

Goal: Ascertain who can and cannot access an FCPA park within a 10-minute walk from their home and provide strategies to expand walkability access.



10-minute Walk Access

To provide equitable park access to everyone in Fairfax County, all residents should have safe access to a park within a 10-minute walk from their home.

- Enhance access to existing parks and trails by adding park entrances and trailheads where feasible.
- Infill/develop existing parkland with no park entrances or amenities.
- Collaborate with partners to remove barriers to safely access parks, such as adding sidewalks, crosswalks, stream crossings, or other infrastructure.
- Work hand-in-hand with the private sector to improve 10-minute walk access to privately-owned, publicly accessible park spaces.
- Focus on acquiring parkland in areas that do not have access to a park.



Complete Park Experiences

Goal: Determine the primary experiences categories, analyze the types of experiences at all parks, and provide recommendations as to which parks could improve on the balance of experiences.

- Everyone should have access to a variety of experiences at FCPA parks within 10-minute walk or 5-minute drive
- Primary experience categories: active recreation, passive/contemplative recreation, social gathering recreation, natural/cultural recreation
- Local, district, and countywide parks will be given a “park score” to understand the current state/balance of primary experiences



Complete Park Experiences

Active Recreation



Social Recreation



Passive/Contemplative Recreation



Natural/Cultural Recreation



Complete Park Experiences

The goal of complete park access is to provide a balance of recreational experiences to all residents.

- Infill/develop parks with limited recreational experiences to enhance access to other types of recreation.
- Create whole park development so that parks with no existing recreational experiences will provide access to a variety of activities.
- Collaborate with the public sector to provide a balance of active recreation, passive/contemplative recreation, social recreation, and natural/cultural recreation at privately-owned, publicly accessible park spaces.
- Acquire parkland based on size and community needs with specific recreation experiences in mind.

Habitat Connectivity

Goals: Identify which areas have no or little habitat connectivity, provide strategies to expand habitat connectivity for potential/future parkland acquisition, and identify existing park sites where habitat health should be improved.



Habitat Connectivity

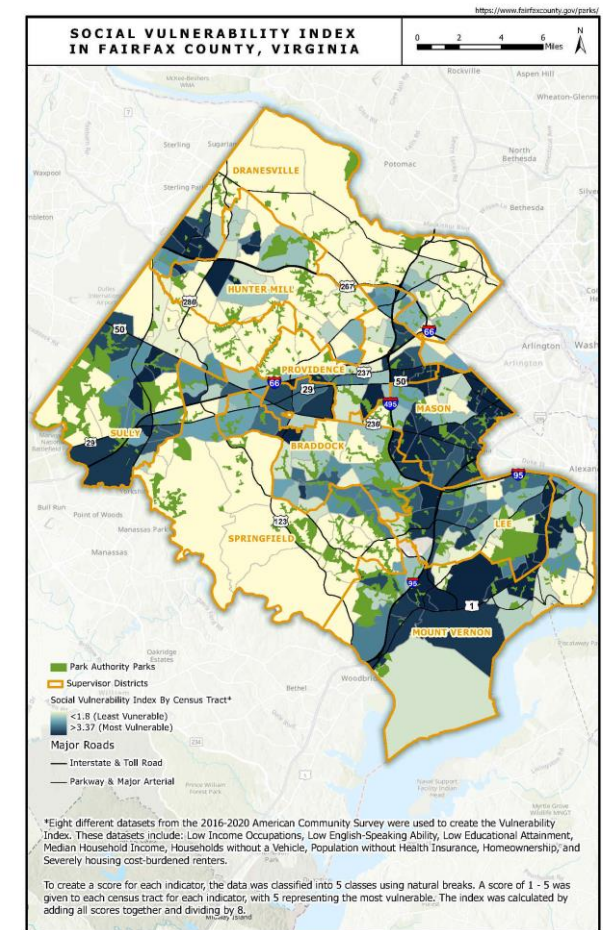
Natural resources play an essential role in providing critical environmental and ecosystem services, as well as offering a high quality of life for residents.

- Plant trees during park development and construction projects to bolster areas with lower tree canopy. Tree plantings would not replace meadows and other environmentally sensitive areas.
- Identify existing park sites where habitat health could be improved and prioritize based on the presence of invasive species, and any other site-specific factors in concert with the Park Authority's Natural Resource Management Plan.
- Consider opportunities to improve habitat connectivity within the county when acquiring parkland.

Equity Lens

- Utilize U.S. Census data
- Vulnerability Index Indicators:

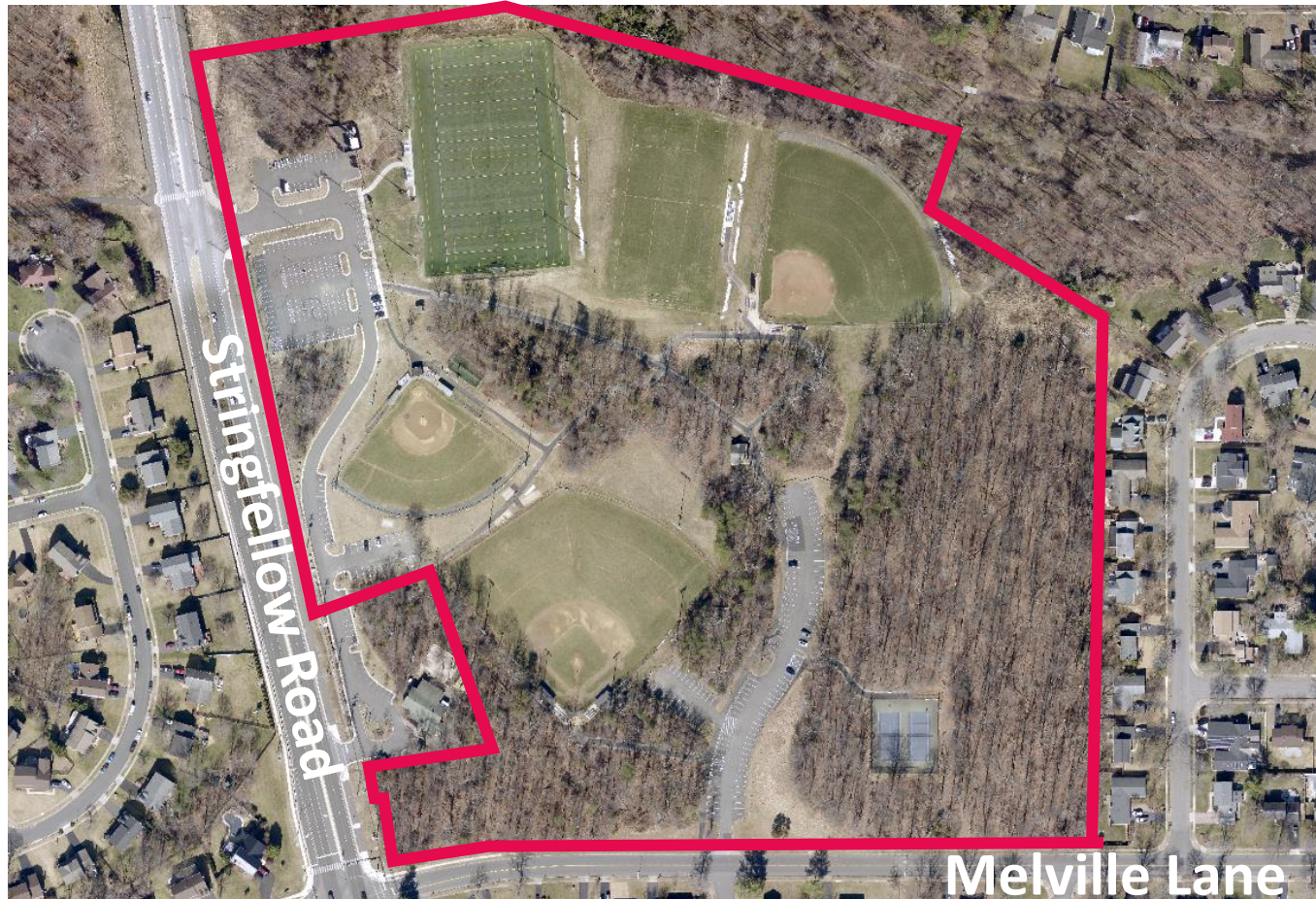
Low Income Occupations	Households without a Vehicle
Low English-Speaking Ability	Population without Health Insurance
Low Educational Attainment	Homeownership
Median Household Income	Severely Cost-burdened Renter



Equity Lens

- By committing to intentionally consider equity in the prioritization of park and recreation needs, the Park Authority can ensure parks enrich the quality of life for all members of the community.
- The PROSA equity lens uses a data-driven approach to help guide equitable service delivery and resource allocation.
- Recognizing opportunity areas, in combination with the number of community members served, will help the Park Authority identify where there may be gaps in the equal provision of park and recreation services and/or where park needs may be greater.

Complete Park Experiences Example



Greenbriar Park

Legend





PROSA In Practice

- Capital Improvement Program (CIP)
- Acquisitions
- Trail System Development
- Park Development
- Park Condition Assessments

Thank You!



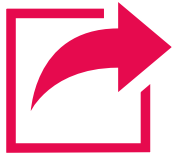
Public comment will be open from July 7 to August 6, 2023



Sign up for project updates



Take the project survey or attend a virtual workshop



Share the project flyer with your friends, family, neighbors, and networks



<https://bit.ly/fcpa-prosa>