

Fairfax County

Lorton Community Center



Lorton Community Center Guiding Principles (Draft)

- **Partnership:** One unified multi-service community center that includes the Lorton Community Action Center which leverages synergies among programs with a shared connection to the adjacent library.
- **Destination:** A modern, sustainable design that provides an attractive destination and a visible landmark for the community.
- **Home:** A welcoming, safe and secure facility that engages all members of the community as an extension of their homes.
- **Active:** A place alive with a variety of activities for users across the full age spectrum; celebrated, shared and easily supervised through transparency and a clear building organization.
- **Flexible:** Flexible and adaptable spaces that can accommodate a wide variety of activities..
- **Wellbeing:** A place to foster health and wellness, nutrition and fitness for mind and body with a connection to nature and the outdoor amenities.
- **Supportive:** A place where the community works together to provide for those in need.



Lorton Community Center Site



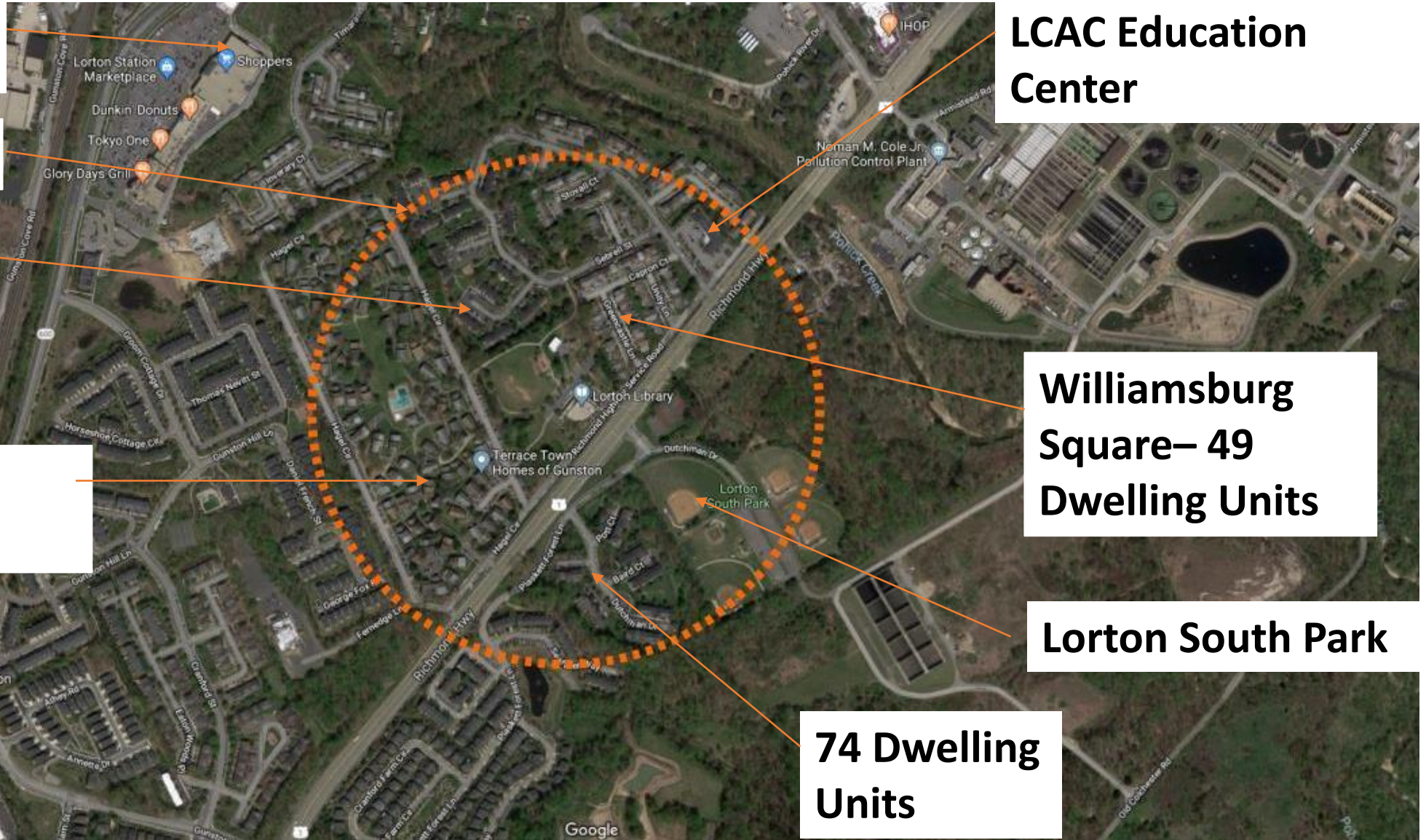
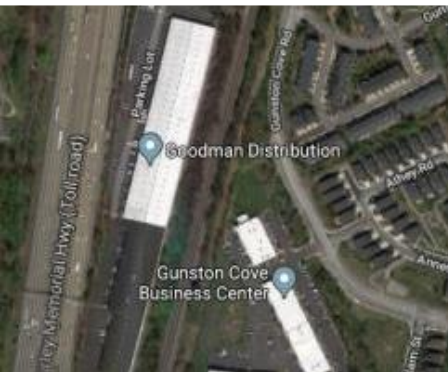
Lorton Community Center Site

**Shoppers
Warehouse**

Ten Minute Walk

**Shepherd Hills –
140 Dwelling
Units**

**Hagel Circle – 415
Dwelling Units**



**LCAC Education
Center**

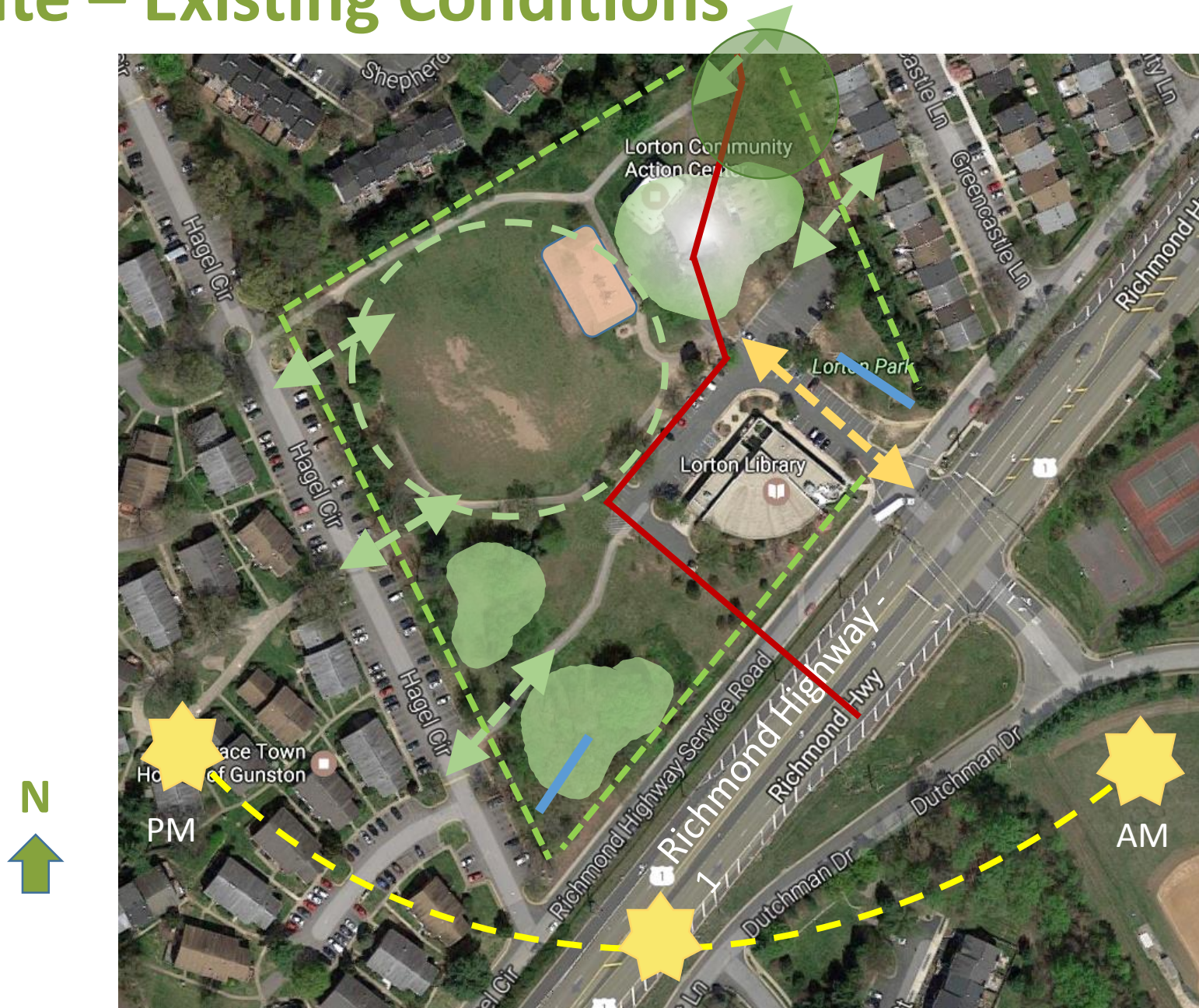
**Williamsburg
Square – 49
Dwelling Units**

**74 Dwelling
Units**

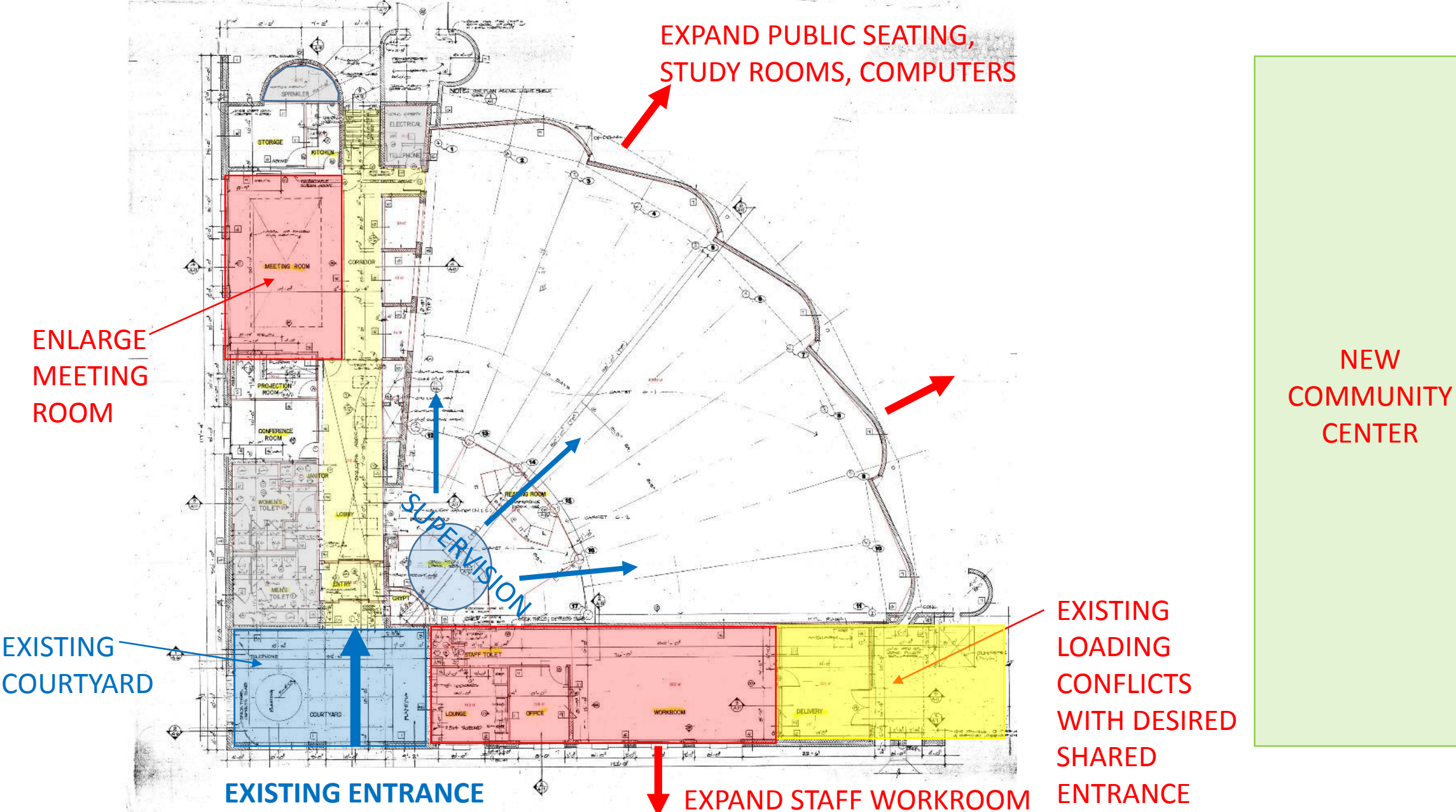
Lorton Site



Lorton Site – Existing Conditions



Existing Lorton Library



NEW
COMMUNITY
CENTER

Lorton Community Center Program

Building Program Summary

Space ID	Room Name
Community Services	
CS-01	Reception Area
CS-02	Waiting Area
CS-03	Café / Lounge
CS-04	DCRS Multipurpose Room
CS-05	Multipurpose Room Storage
Digital Maker Space	
CS-06	Computer Lab
CS-07	Computer Office
CS-08	Computer Storage
CS-09	Digital Gaming
CS-10	Music Room
DCRS Administrative Offices	
CS-11	Directors Office
CS-12	6-Staff Office
CS-13	File Room
CS-14	Copier / Work Room
CS-15	Storage
CS-16	Conference Room
Teaching Kitchen	
CS-17	Commercial Kitchen
CS-18	Kitchen storage
CS-19	Kitchen Office
CS-20	Kitchen Restroom
CS-21	Classroom
CS-22	Classroom Storage
CS-23	General Storage
CS-24	FMD Storage

Space ID	Room Name
Recreational Services	
RS-01	Gymnasium
RS-02	Gym Storage (Chairs/Tables)
RS-03	Gym Equipment Storage
RS-04	Game Room
Arts Maker Space	
RS-05	Arts & Crafts
RS-06	Kiln room
RS-07	Art Storage
RS-08	Exercise Room
RS-09	Sensory room
RS-10	Sensory room storage

Lorton Community Action Center	
LCAC-01	Reception Area
LCAC Administrative Offices	
LCAC-02	Director Office
LCAC-03	5-Staff Office
LCAC-04	File Room
LCAC-05	Copier / Work Room
LCAC-06	Pantry
LCAC-07	Storage
LCAC-08	Volunteer Work Room

Space ID	Room Name
Building Support (Part of Gross Floor Area)	
BS-01	Stair 1
BS-02	Stair 2
BS-03	Elevator
BS-04	Elevator Machine Room (controller closet)
BS-05	Janitor's Closet
BS-06	Janitor's Closet
BS-07	Mechanical Room
BS-08	Sprinkler
BS-09	Electrical
BS-10	Data Closet (MDF)
BS-11	Data Closet (IDF)
BS-12	Men's Toilet - Floor 1
BS-13	Men's Toilet - Floor 2
BS-14	Women's Toilet - Floor 1
BS-15	Women's Toilet - Floor 2
BS-16	Electrical Closet - Floor 1
BS-17	Electrical Closet - Floor 2

Gymnasium



Multi-Purpose



Fitness



Game Room



Entry, Lobby, Outdoor Spaces



Precedents

Maryland Heights, Community Recreation Center



Maryland Heights, Community Recreation Center





Meadowvale
Community Centre & Library

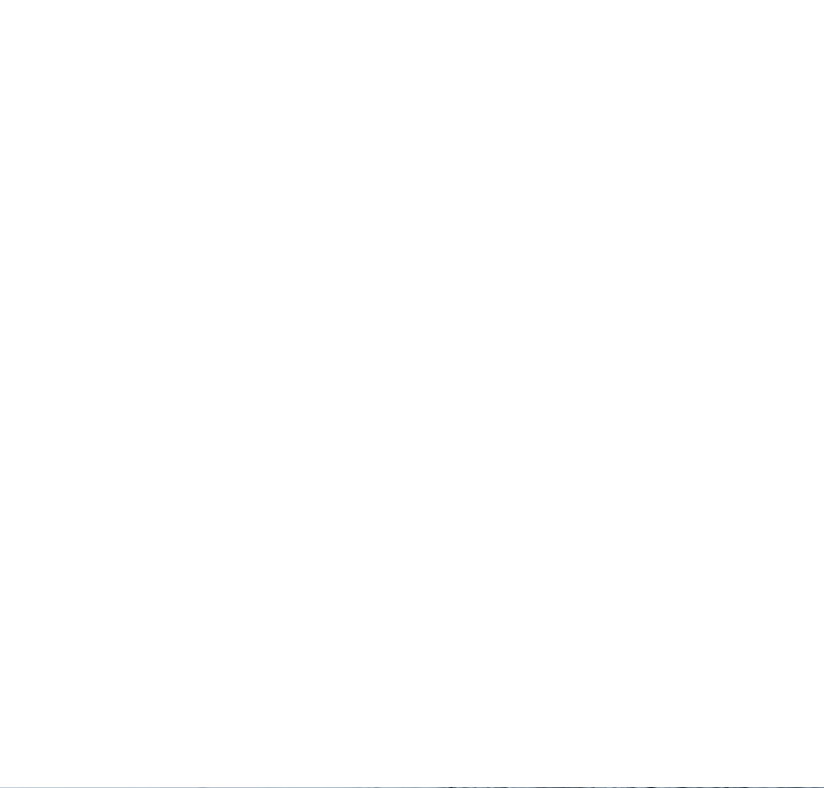


THE ANKER





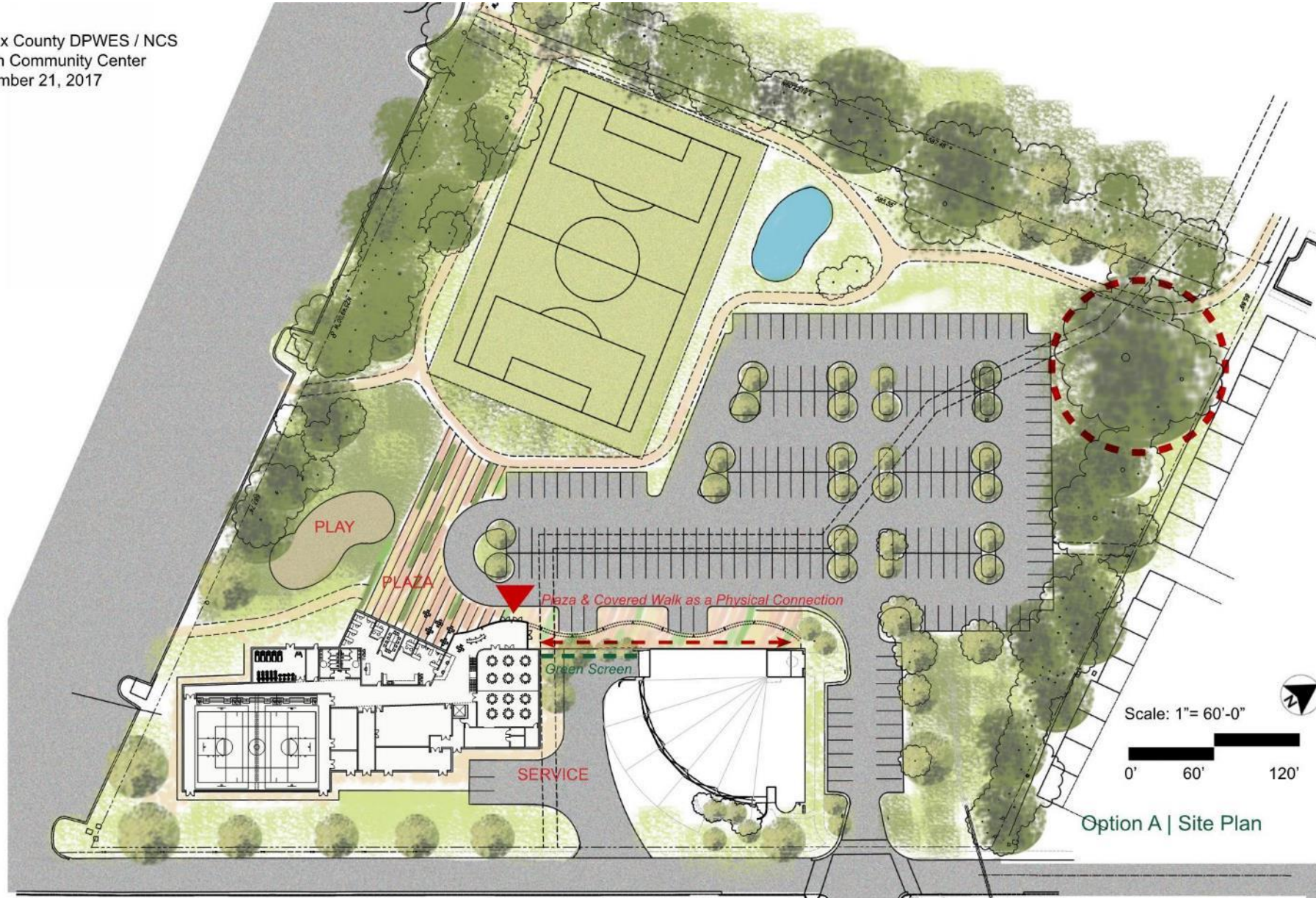




Design Concept Options

Option A – Site Plan

Fairfax County DPWES / NCS
Lorton Community Center
December 21, 2017



Opportunities:

- Connection To Fields
- Sunny Plaza
- Drop-off
- Consolidated Service, Remote From Public
- Location Of Play Area
- Maximize Green Space And Trails

Challenges:

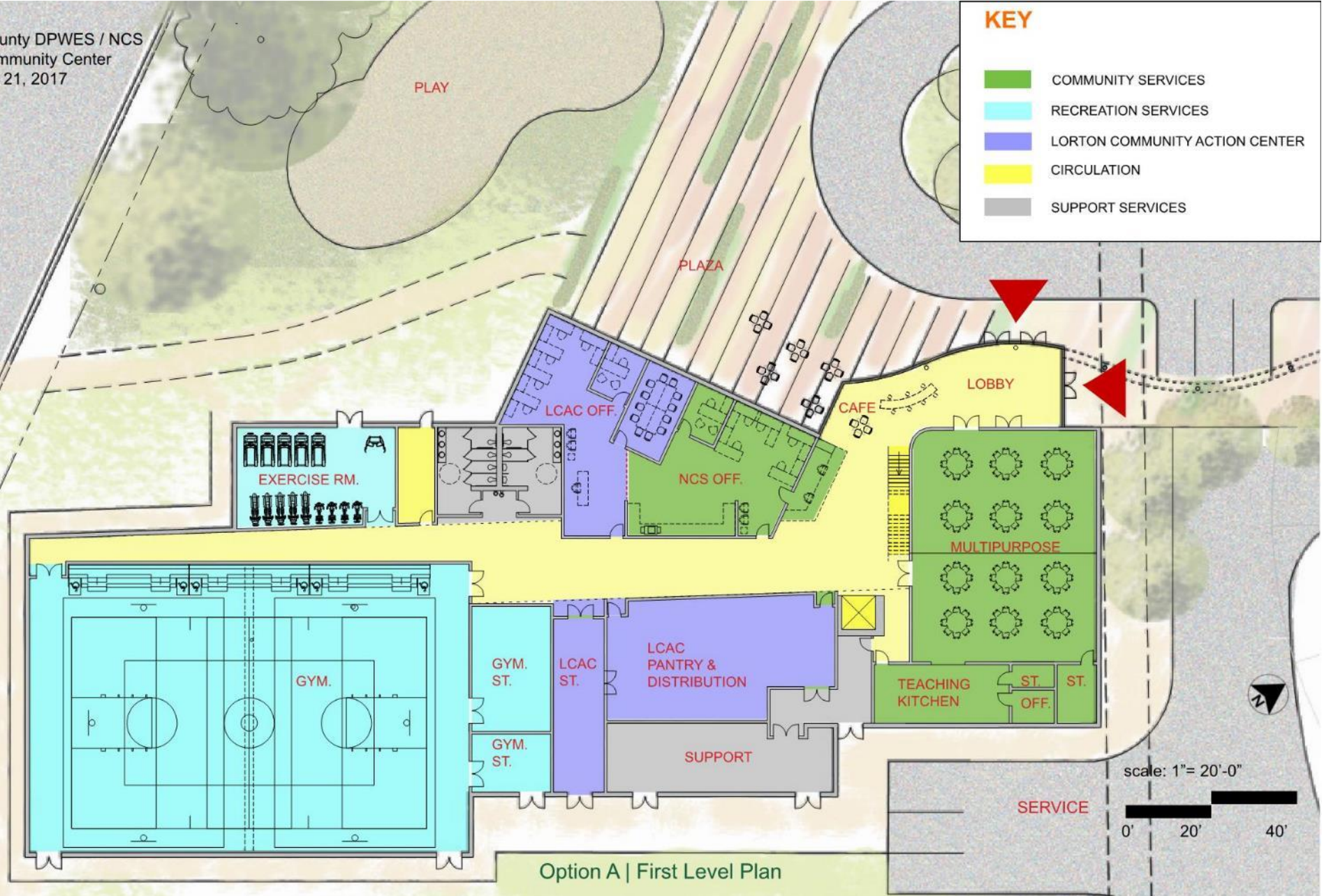
- Distance From Parking
- Location Of Service

Option A – First Floor Plan

Fairfax County DPWES / NCS
Lorton Community Center
December 21, 2017

KEY

- COMMUNITY SERVICES
- RECREATION SERVICES
- LORTON COMMUNITY ACTION CENTER
- CIRCULATION
- SUPPORT SERVICES



Option A | First Level Plan

Opportunities:

- Efficient Plan
- 2nd Floor Activity
- Location Of Pantry
- Inviting Entry
- Location Of Play Area
- Security / Control
- Active Lobby

Challenges:

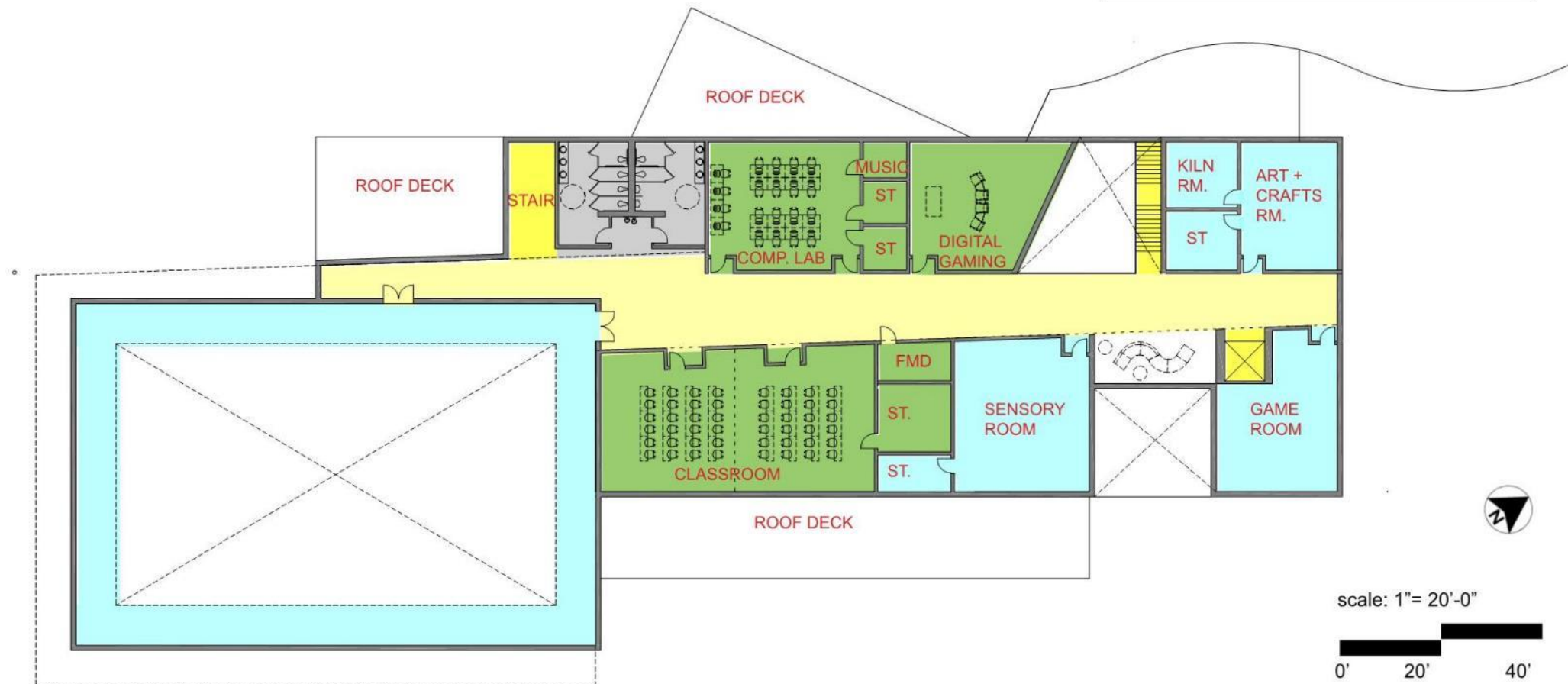
- Long Narrow Corridor
- Location Of Pantry

Option A – Second Floor Plan

Fairfax County DPWES / NCS
Lorton Community Center
December 21, 2017

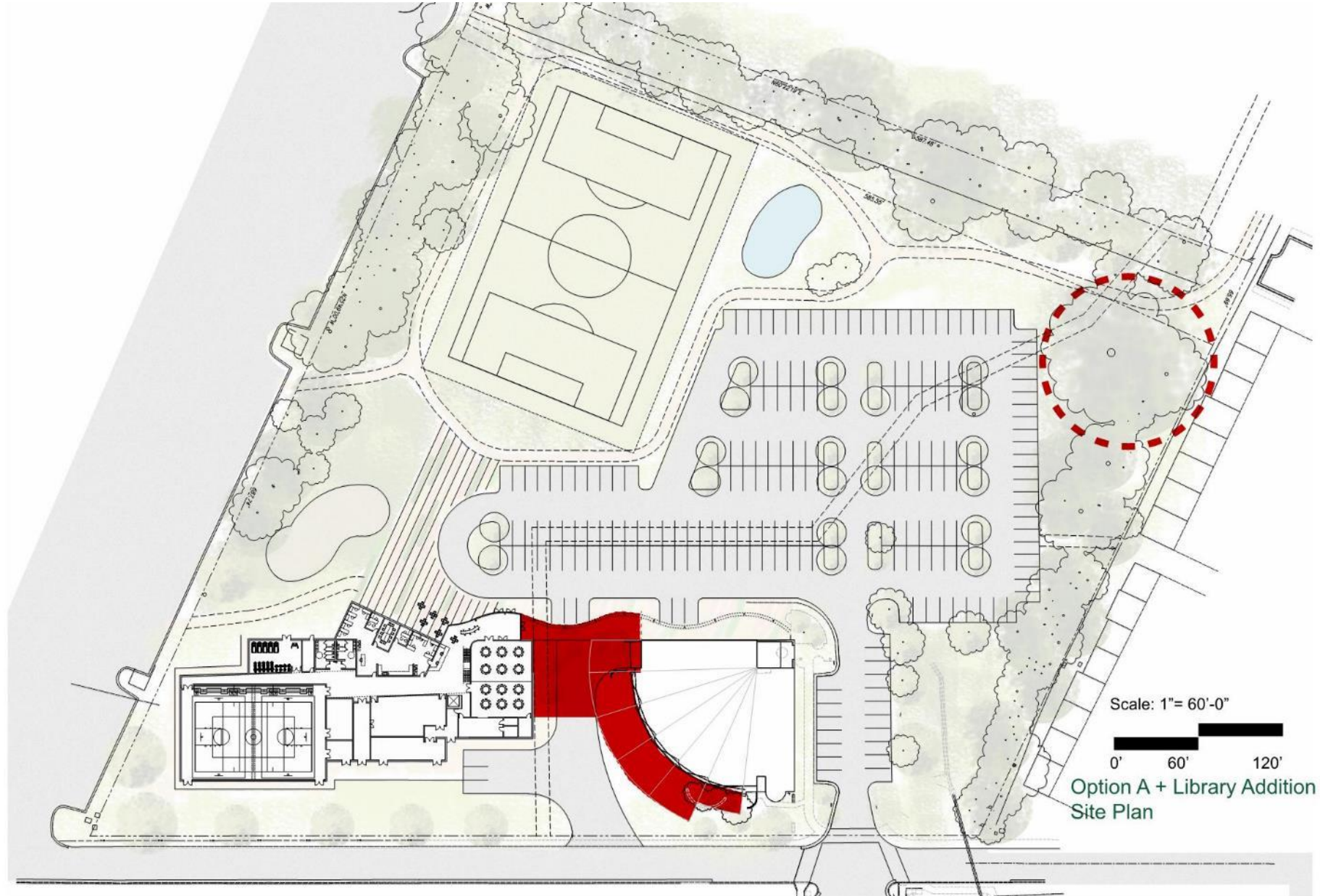
KEY

- COMMUNITY SERVICES
- RECREATION SERVICES
- LORTON COMMUNITY ACTION CENTER
- CIRCULATION
- SUPPORT SERVICES



Option A | Second Level Plan

Option A – Site Plan Phase 2



Opportunities:

- Connection To Fields
- Sunny Plaza
- Drop-off
- Consolidated Service, Remote From Public
- Location Of Play Area
- Maximize Green Space And Trails

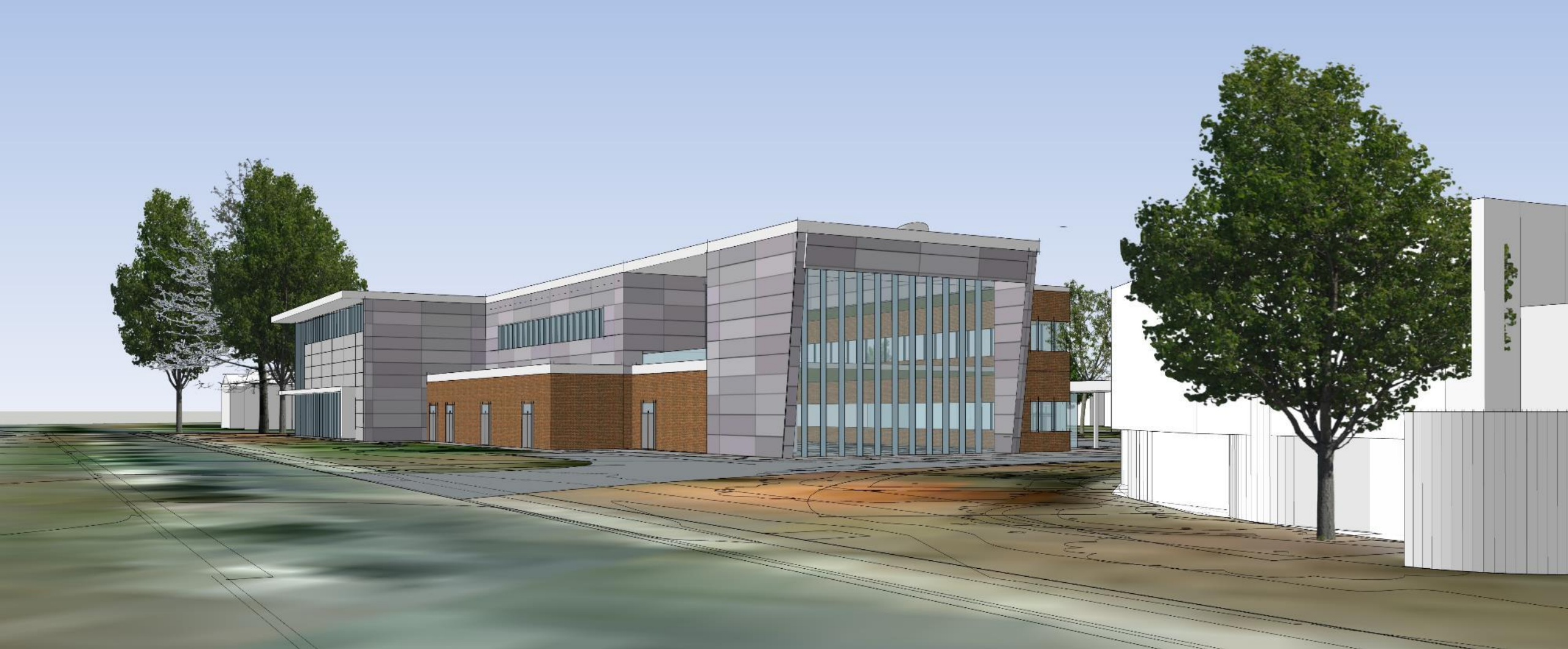
Challenges:

- Distance From Parking
- Location Of Service

Option A – View from South



Option A – View from North



Option A – View from Park



Option A – Bird's Eye



Option A – Building Elevations



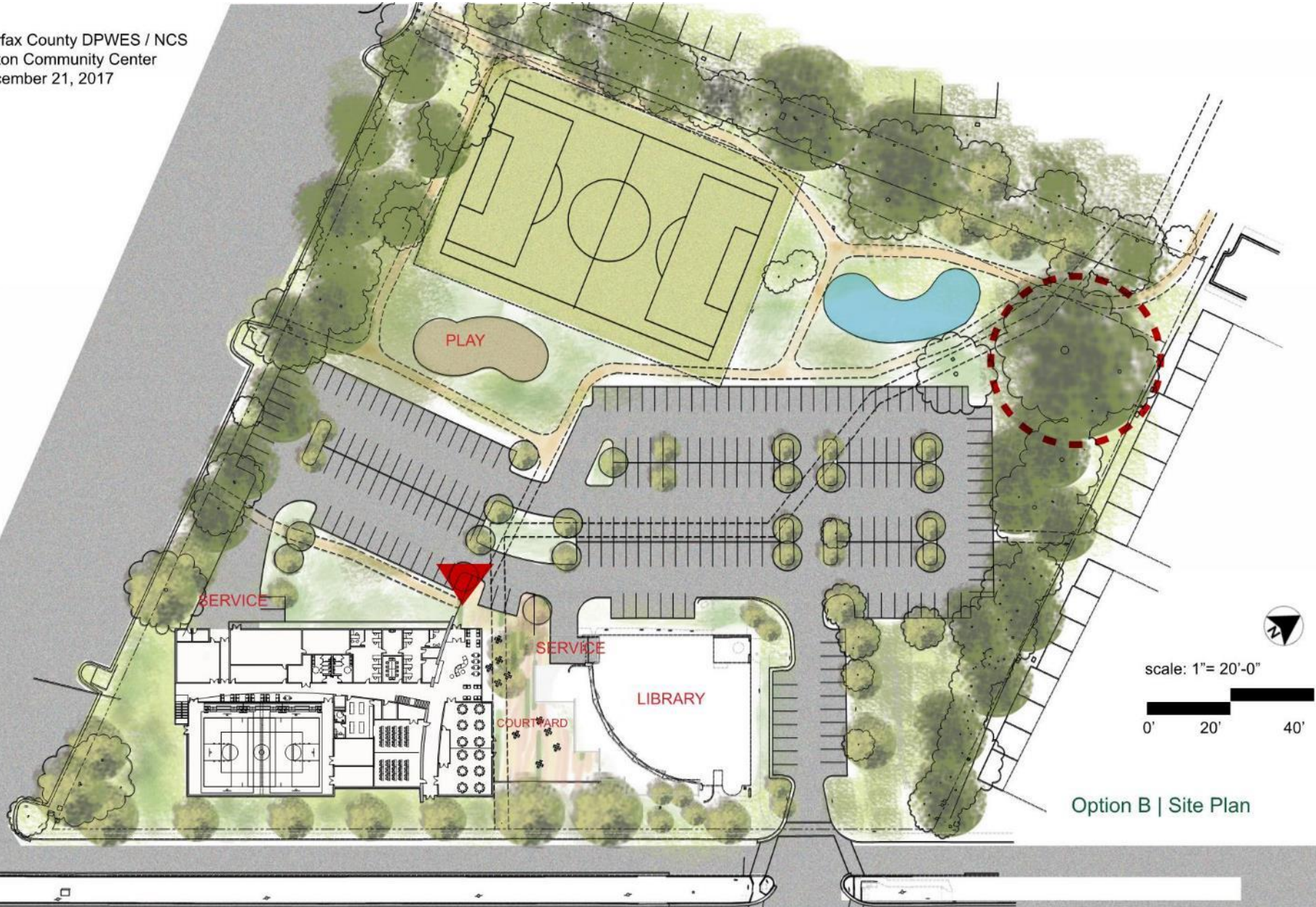
Street Elevation



Parking Elevation

Option B – Site Plan

Fairfax County DPWES / NCS
Lorton Community Center
December 21, 2017



Option B | Site Plan

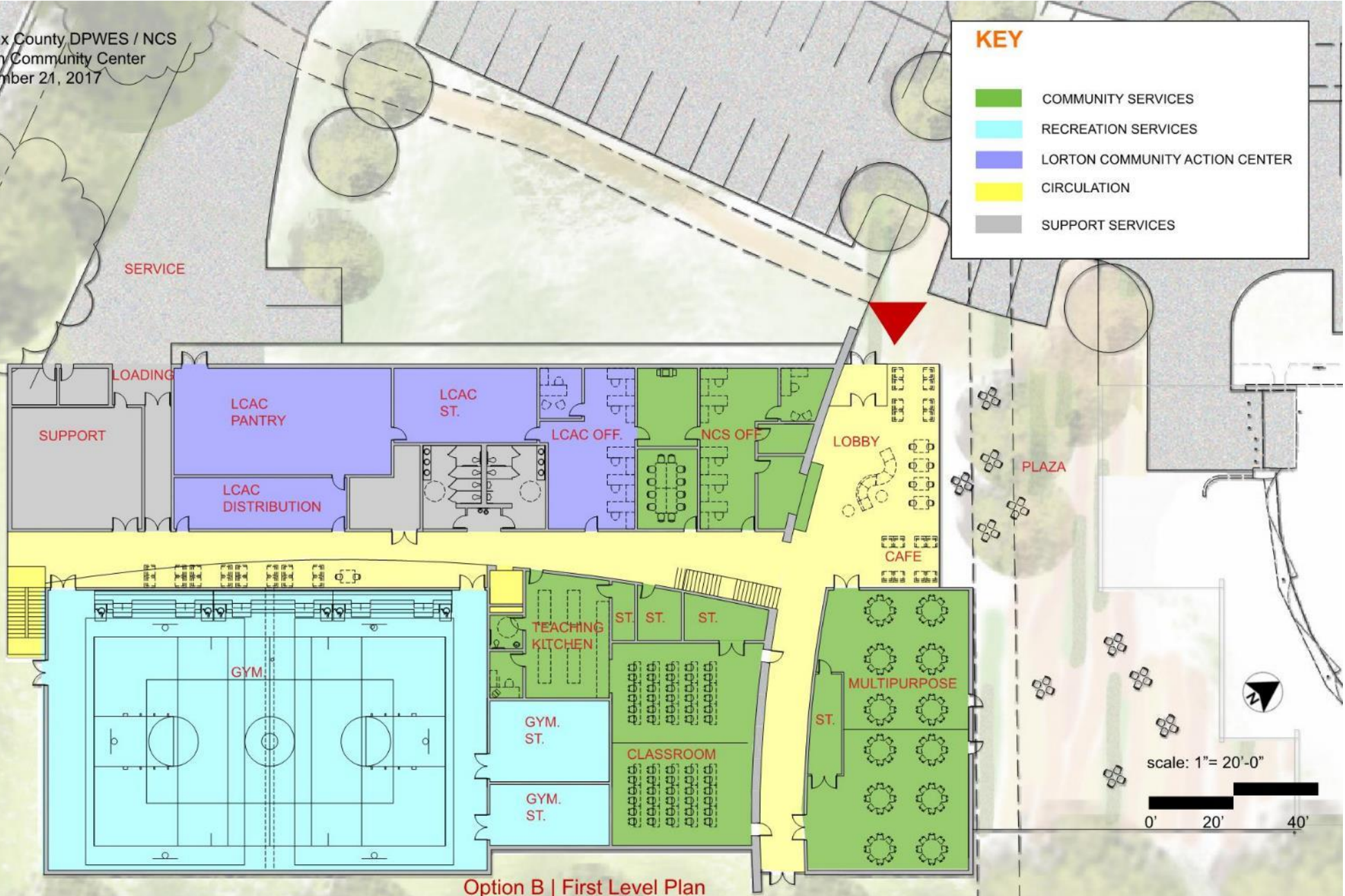
- **Opportunities:**
- Ease of connection to Library
- Proximity of Parking Plaza connection to Library
- Service hidden from Route 1
- Compact footprint
- Sunny courtyard
- Maximize green space and trails

Challenges:

- No direct connection to field and play areas
- Location of entry in Phase 1

Option B – First Floor Plan

Fairfax County DPWES / NCS
Lorton Community Center
December 21, 2017



Option B | First Level Plan

Opportunities:

- Consolidation of Multi-Purpose with Classrooms
- Location of Pantry
- Security / Control

Challenges:

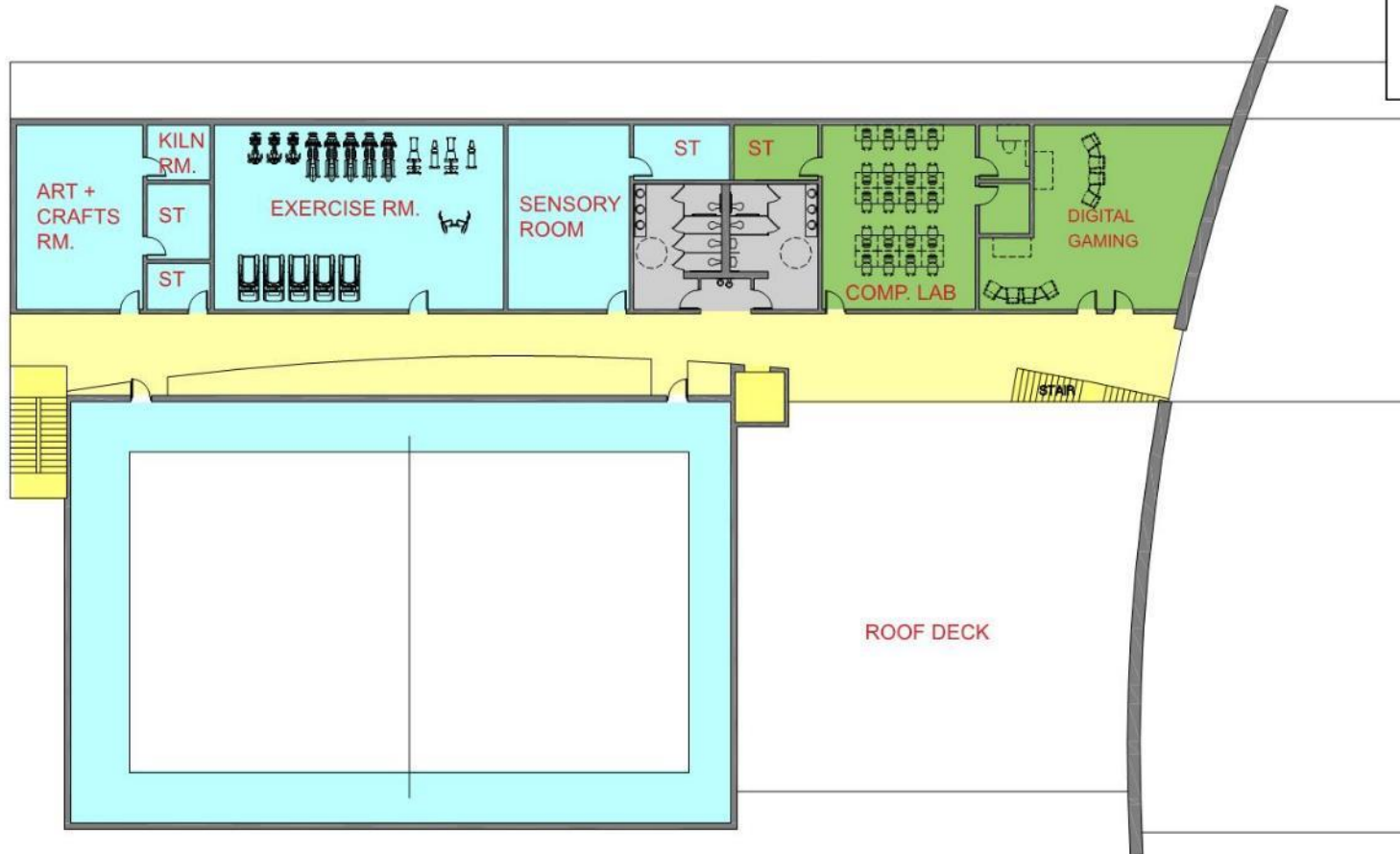
- Reduced Activity on 2nd Floor
- Location Of Pantry

Option B – Second Floor Plan

Fairfax County DPWES / NCS
Lorton Community Center
December 21, 2017

KEY

- COMMUNITY SERVICES
- RECREATION SERVICES
- LORTON COMMUNITY ACTION CENTER
- CIRCULATION
- SUPPORT SERVICES



Option B | Second Level Plan

scale: 1" = 20'-0"

A north arrow pointing towards the top right and a scale bar showing 0', 20', and 40' increments.

Option B – Site Plan Phase 2



- **Opportunities:**

- Ease of connection to Library
- Proximity of Parking Plaza connection to Library
- Service hidden from Route 1
- Compact footprint
- Sunny courtyard
- Maximize green space and trails

- **Challenges:**

- No direct connection to field and play areas
- Location of entry in Phase 1

Option B – View from South



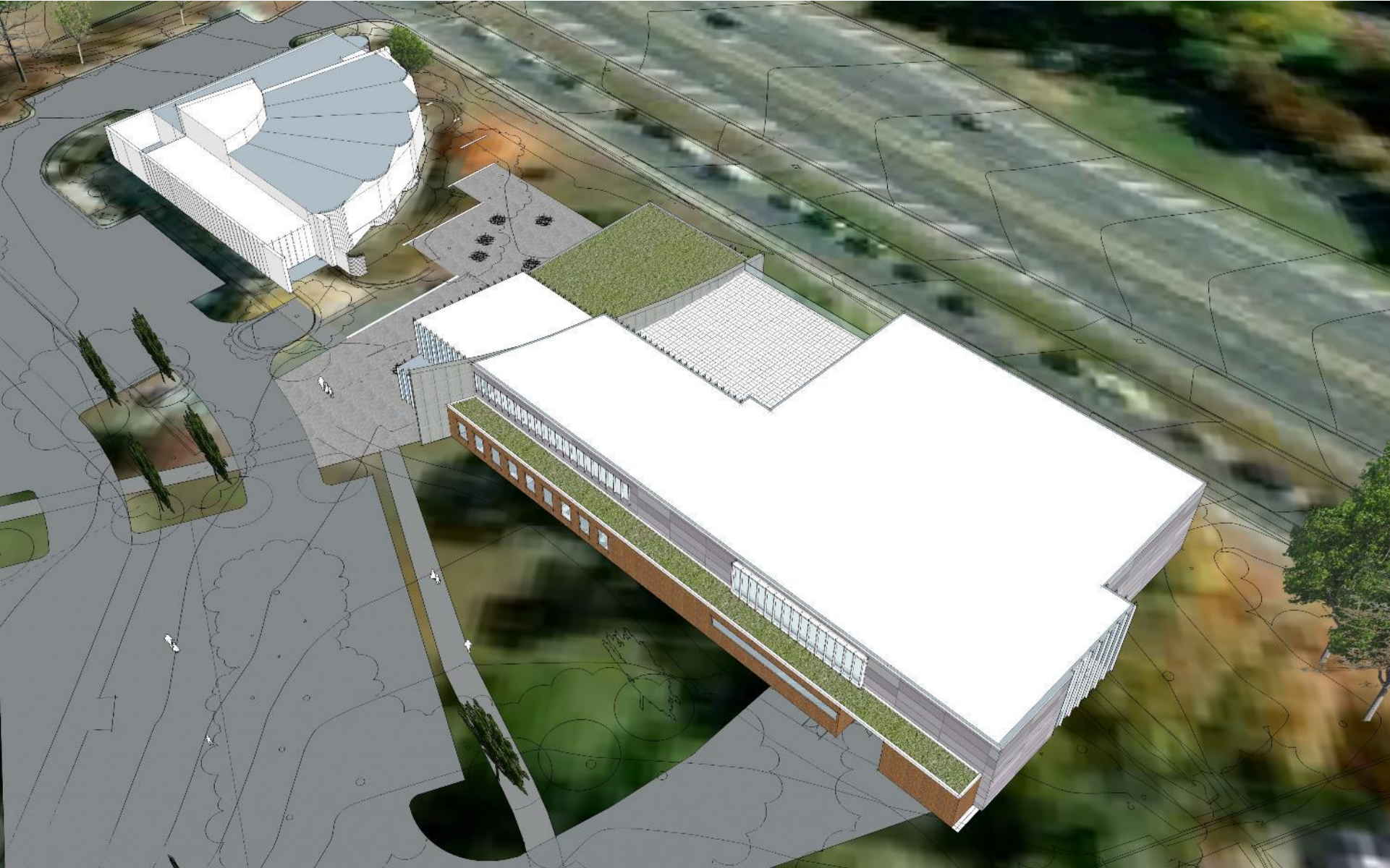
Option B – View from North



Option B – View from Parking



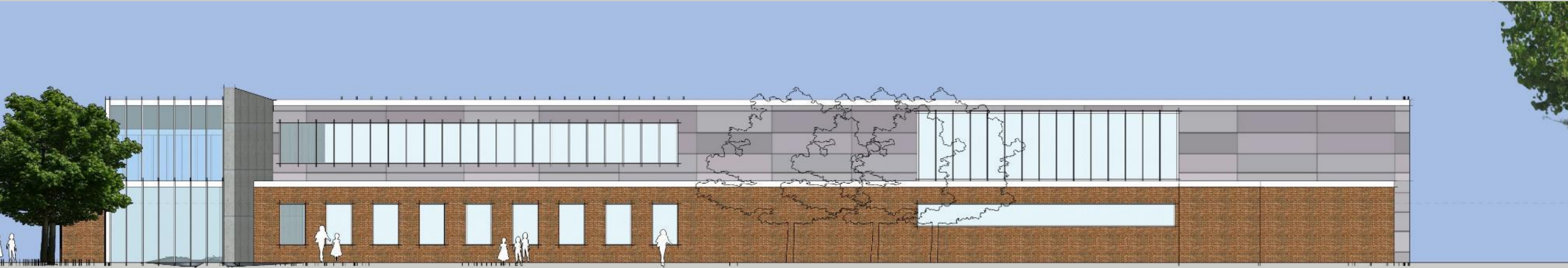
Option B – Birds eye



Option B – Building Elevations



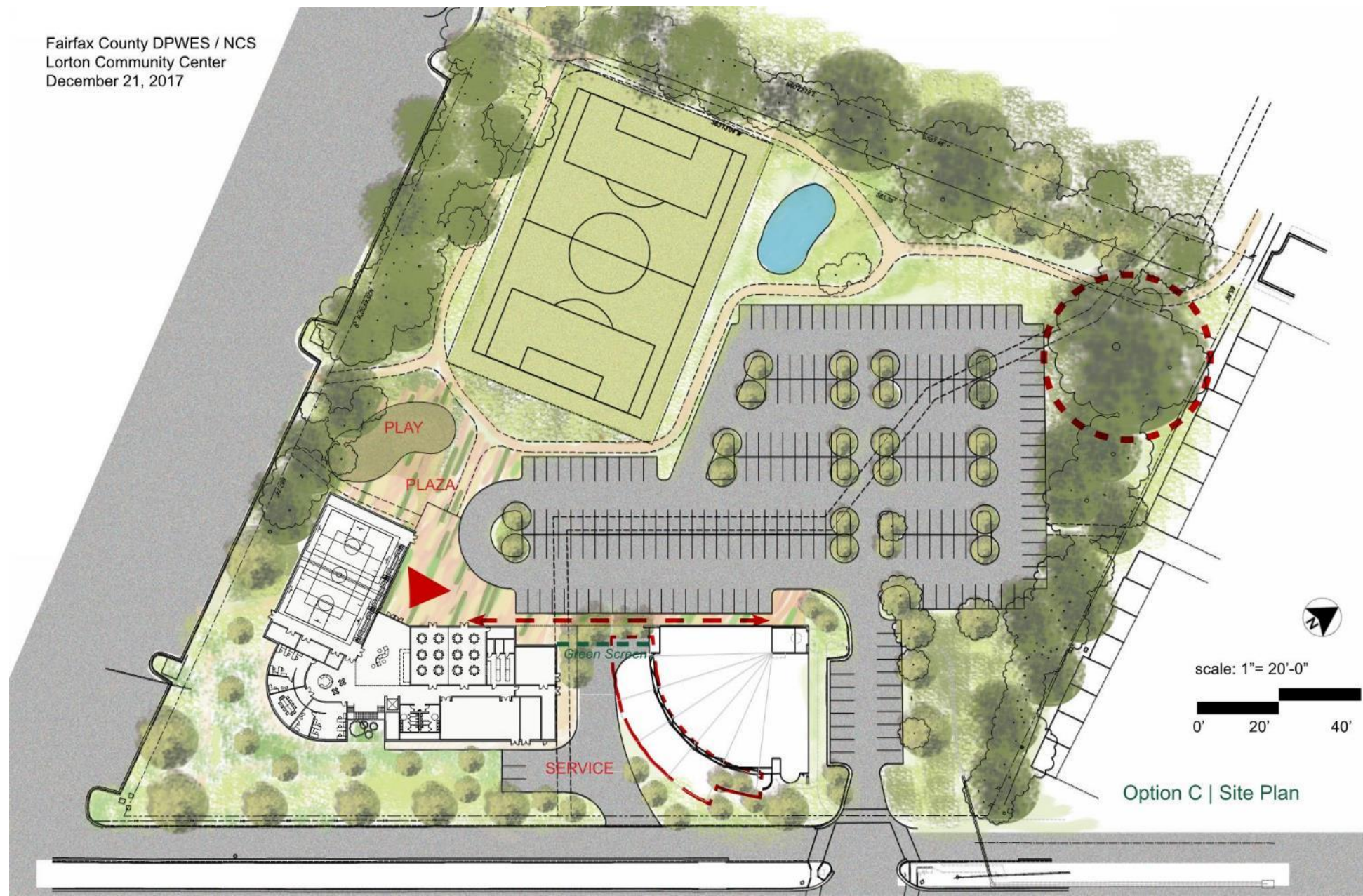
Street Elevation



Parking Elevation

Option C – Site Plan

Fairfax County DPWES / NCS
Lorton Community Center
December 21, 2017



Opportunities:

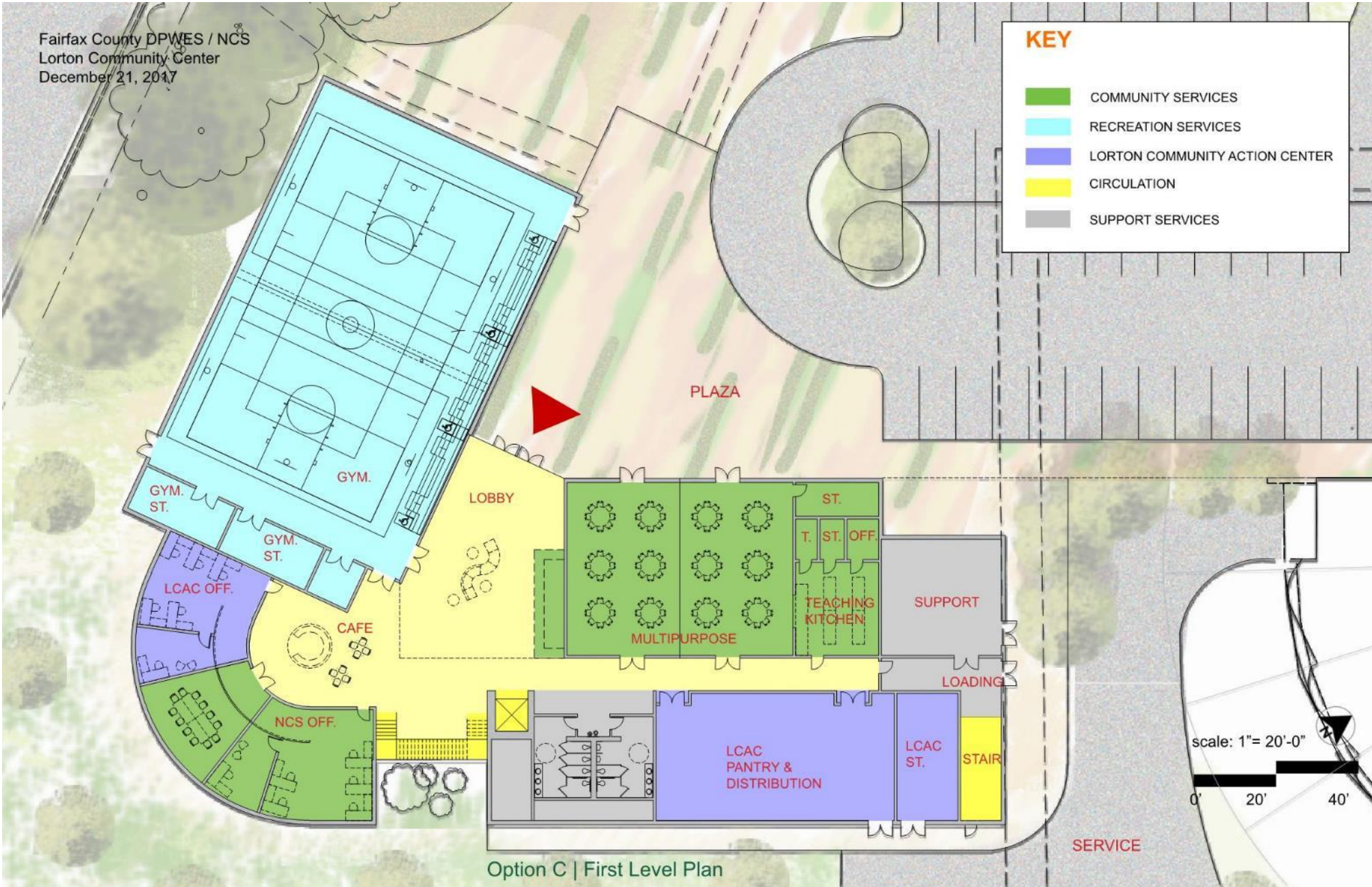
- Connection to Fields
- Drop-Off
- Consolidated Service, Remote from public
- Location of play area
- Maximize green space and trails

Challenges:

- Distance from Parking
- Location of Service
- Shady plaza
- Location of Entry

Option C – First Floor Plan

Fairfax County DPWES / NCS
Lorton Community Center
December 21, 2017



Option C | First Level Plan

Opportunities:

- Activity visible from Route 1
- Active 2nd Floor

Challenges:

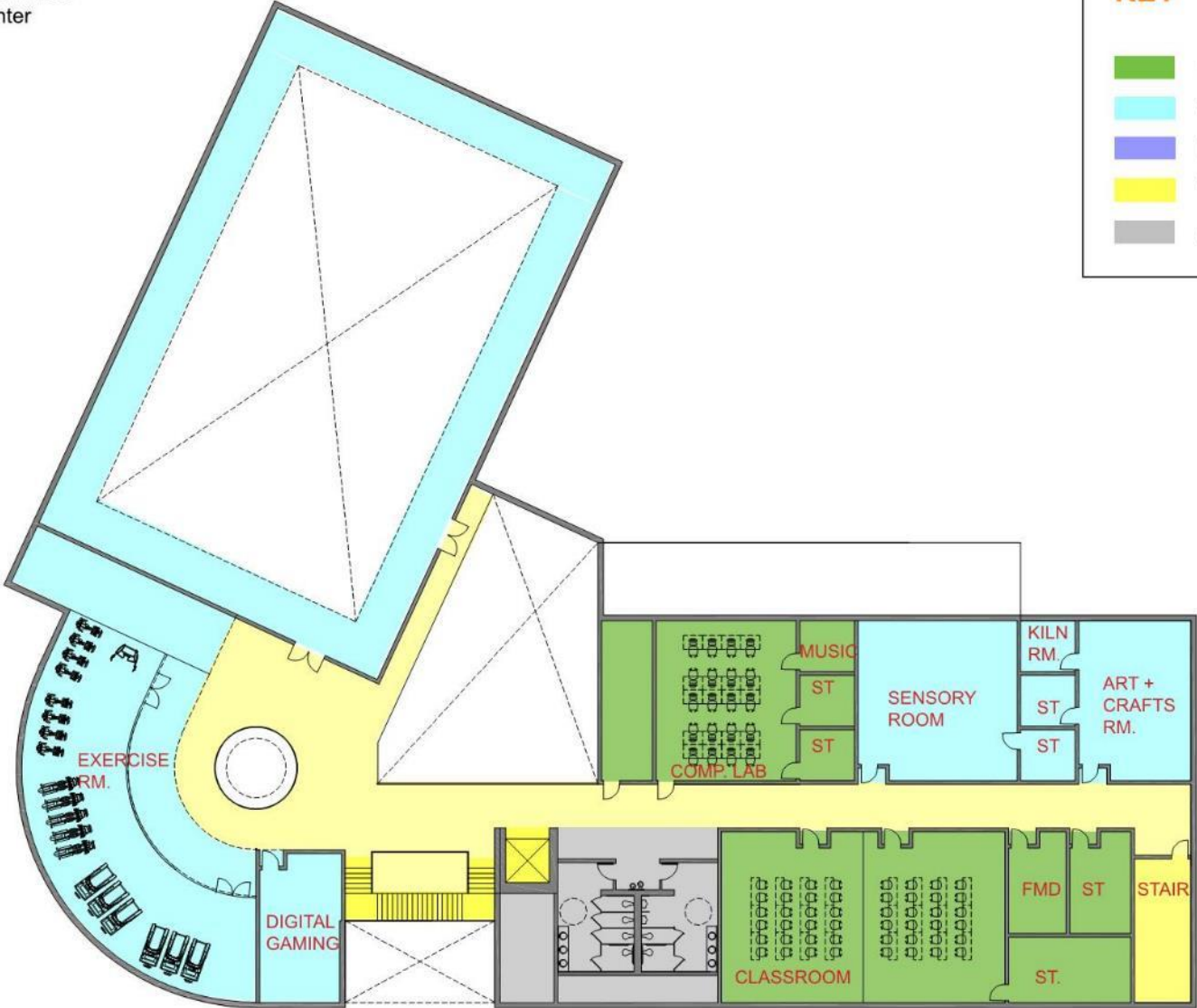
- Access to Gym
- Entry in Shadow
- Remote Reception Desk

Option C – Second Floor Plan

Fairfax County DPWES / NCS
Lorton Community Center
December 21, 2017

KEY

- COMMUNITY SERVICES
- RECREATION SERVICES
- LORTON COMMUNITY ACTION CENTER
- CIRCULATION
- SUPPORT SERVICES

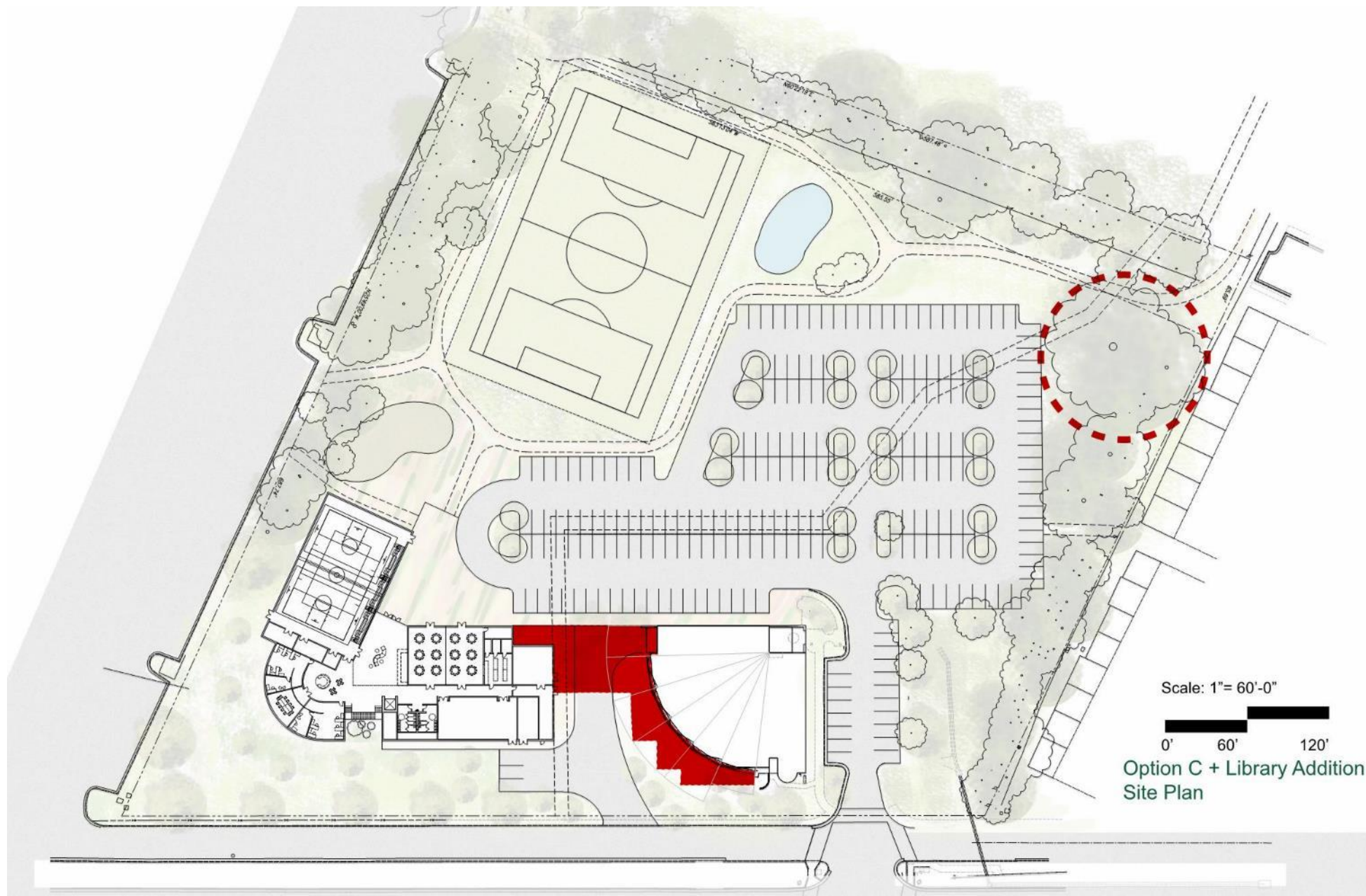


scale: 1"= 20'-0"

A north arrow pointing upwards and a scale bar showing 0, 20, and 40 feet.

Option C | Second Level Plan

Option C – Site Plan Phase 2



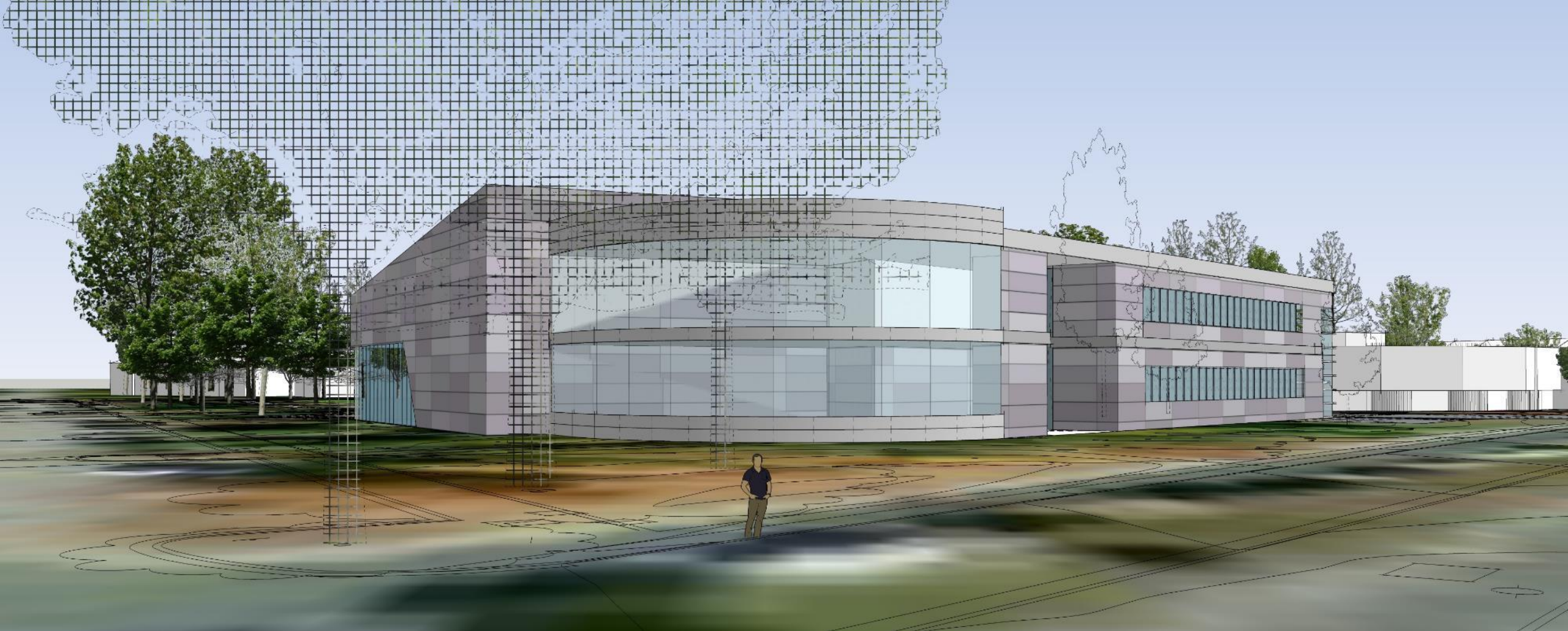
Opportunities:

- Connection to Fields
- Drop-Off
- Consolidated Service, Remote from public
- Location of play area
- Maximize green space and trails

Challenges:

- Distance from Parking
- Location of Service
- Shady plaza
- Location of Entry

Option C – View from South



Option C – View from North



Option C – View from Parking



Option C – Bird's Eye



Option C – Building Elevations



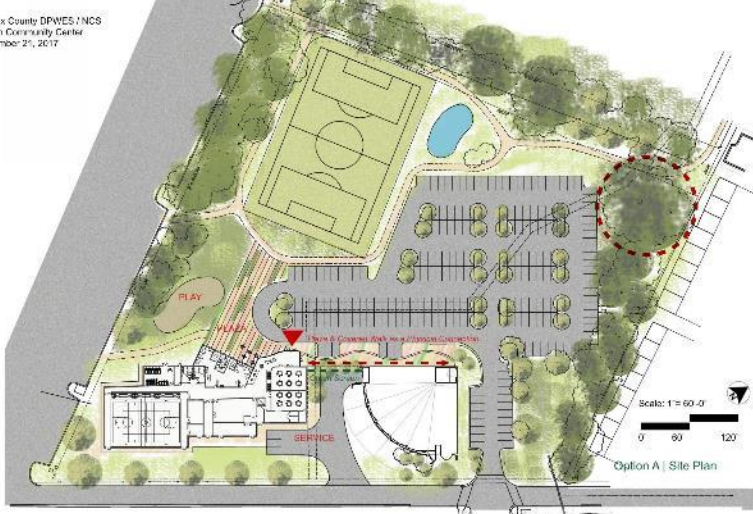
Street Elevation



Parking Elevation

Site Concept Comparison

Fairfax County DPWES / NCS
Lorton Community Center
December 21, 2017



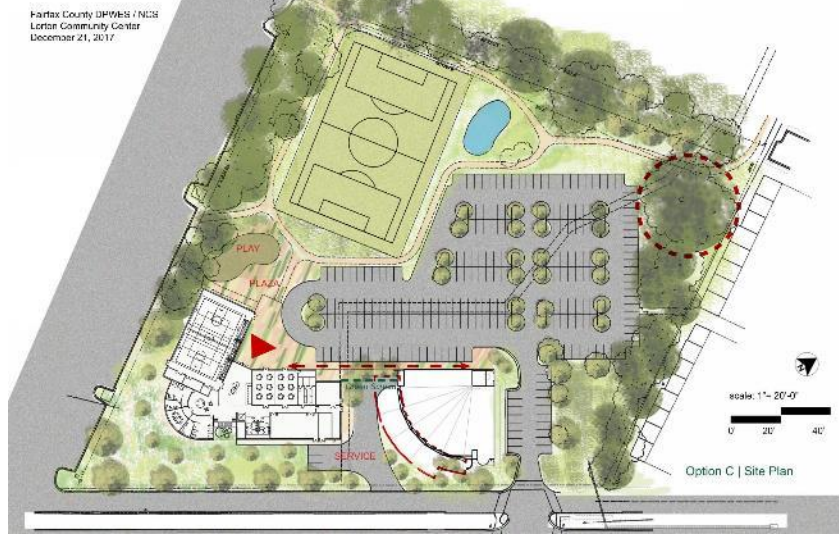
Option A

Fairfax County DPWES / NCS
Lorton Community Center
December 21, 2017



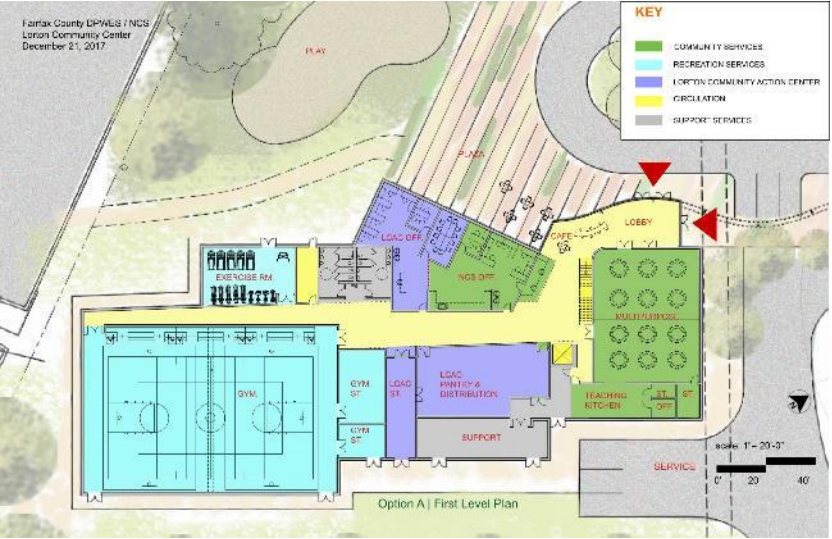
Option B

Fairfax County DPWES / NCS
Lorton Community Center
December 21, 2017



Option C

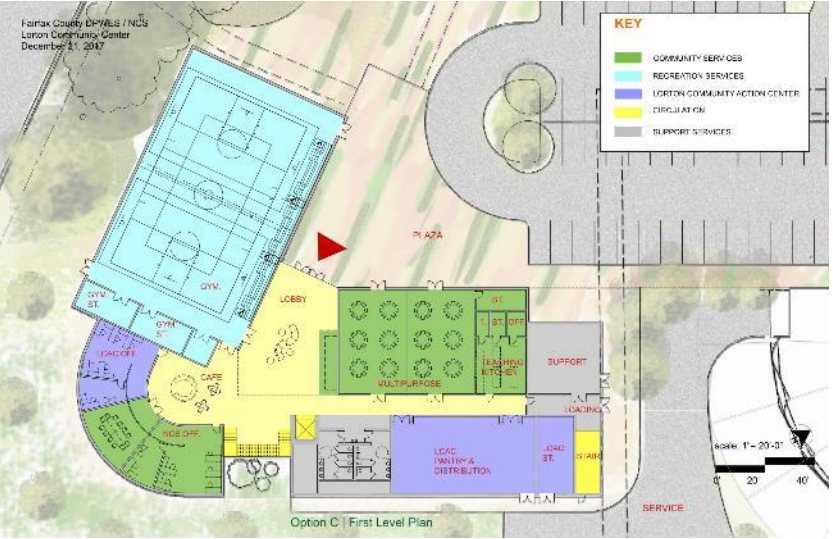
Concept Plan Comparison



Option A



Option B



Option C

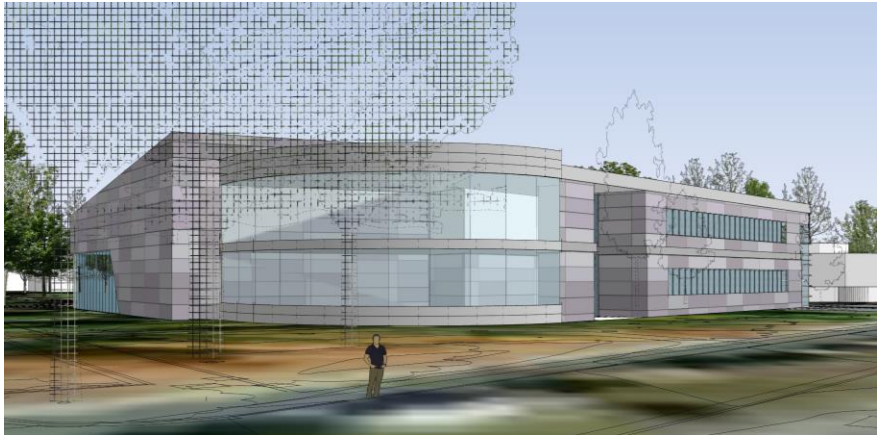
Concept Comparison - View from South



Option A



Option B



Option C

Concept Comparison - View from North



Option A



Option B



Option C

Concept Comparison – Bird's eye



Option A



Option B



Option C

End

Concept 1 – Site Plan

