



# FCPS Synthetic Maintenance

**Funding and General  
Maintenance Practices**





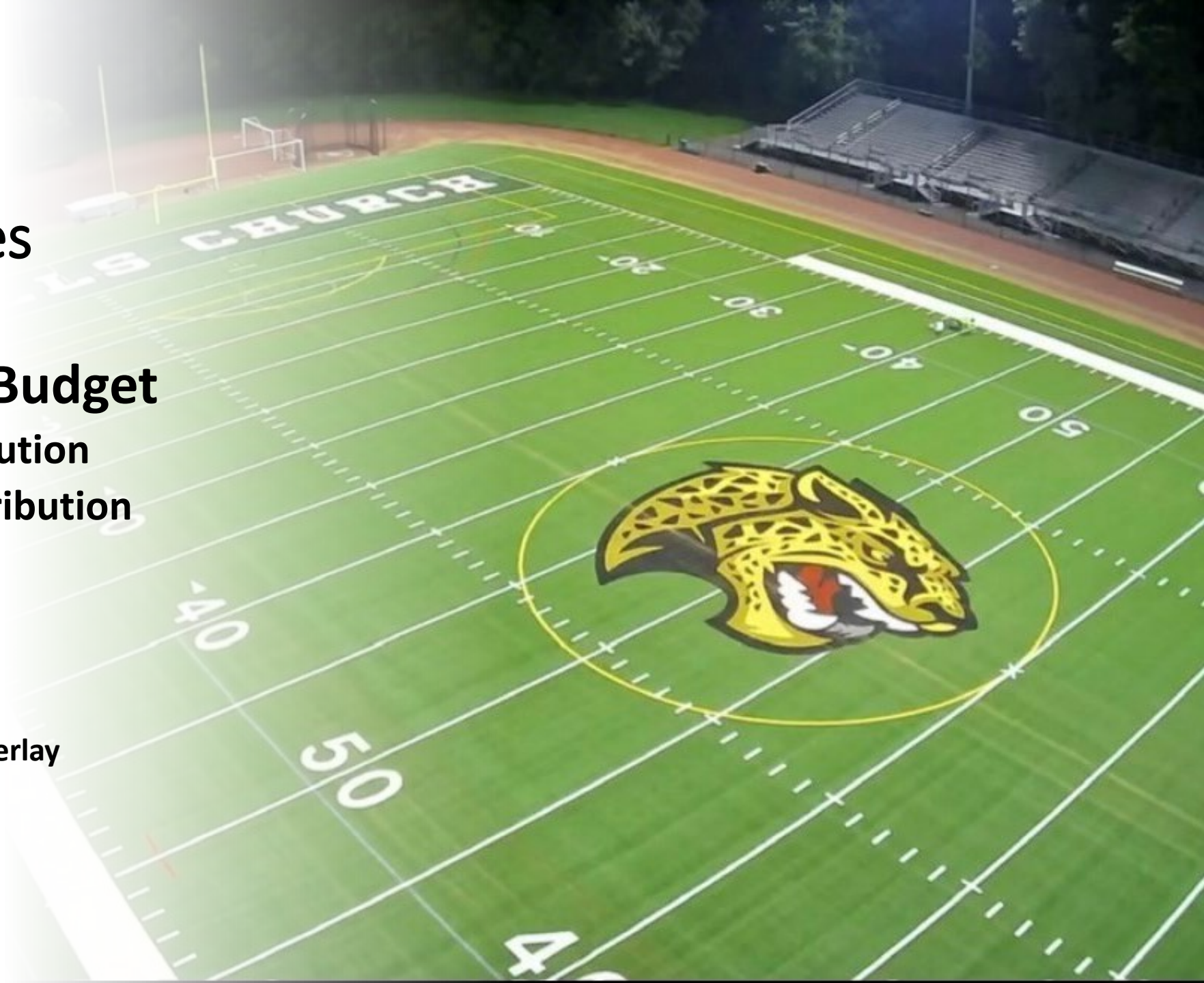
# Synthetic Program Information

- **FCPA Maintenance Program of school fields began in January 2020**
- **Draft Agreement FCPA/FCPS - pending FCPS approval**
- **Maintenance by FCPA**
- **Replacements**
  - **HS Stadium:**
    - **FCPS Fund & Manage**
  - **EMC/HS Practice:**
    - **County Turf Replacement Fund (FCPA managed, formerly NCS)**
    - **FCPS manages construction**



# Synthetic Maintenance Funding & Facilities

- **\$1,210,000 Annual Budget**
  - \$605,000 FCPS Contribution
  - \$605,000 County Contribution
- **52 Fields**
  - 24 HS Stadiums
  - 19 HS Practice
    - 1- 90ft overlay, 1- 60ft overlay
  - 9 EMC
    - 1- 90ft overlay, 1- 60ft



A green maintenance machine with blue brushes and tires on a green field. The machine is a large, green metal frame with two large black tires and several blue brushes. It is positioned on a green field with white yard lines. The machine is connected to a power source, possibly a generator or battery pack, which is visible on top of the frame. The machine is designed for maintaining artificial turf fields.

# Maintenance Practices

- Performed by Contractors
- Bi-Weekly (Alternating)
  - Week One:
    - Inspections
    - Infill Depth/Pile Height Check
    - Surface Trash Removal
    - Spot Rake & Add Infill
  - Week Two:
    - Grooming
    - Debris Removal
- 2X/year
  - Deep Cleaning
  - GMAX Testing
- As Needed
  - Minor Repairs (FCPA coordinated)
  - Major/Cut and Paste Repairs (FCPS coordinated)





# Day-to-Day Operations

- **Communication**
  - Liaisons @ FCPA & FCPS
  - On-Site School Staff
  - Contractor
- **Site Visits**
  - QAQC
  - Evaluations
- **Analysis**
  - Review Field Reports
  - Assess for Replacement
- **Follow-Up**
  - Schools
  - Contractors
  - Leadership





Questions/Discussion