



---

# *Langley Fork Park*

MASTER PLAN REVISION

---

PUBLIC COMMENT MEETING  
OCTOBER 17, 2013

*Fairfax County Park Authority*

# Langley Fork Park

# Welcome

---

Introductions  
Project Presentation  
Moderated Comment Period

Fairfax County Park Authority



# Langley Fork Park

Langley Fork Park, is actually park of the larger George Washington Memorial Parkway, owned by the federal government as administered through the National Park Service.

Fairfax County Park Authority maintains the park and schedules the usage of the existing athletic fields through the provision of a Special Use Permit with the National Park Service.



Fairfax County Park Authority

# Langley Fork Park

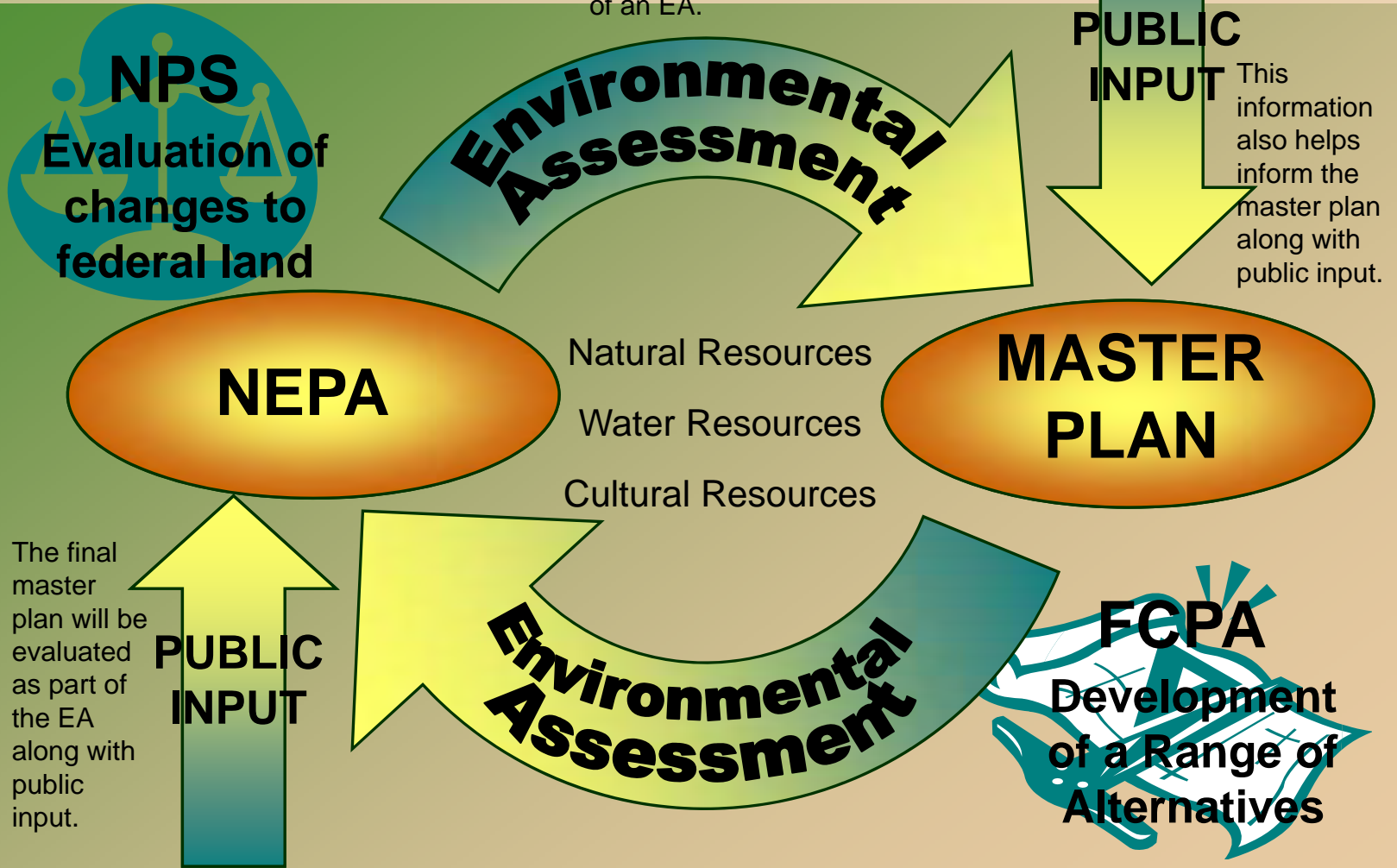
To better suit the goals of each group, discussions between the NPS and the Park Authority began to consider the possibility that an equitable land exchange might benefit both parties.



## Fairfax County Park Authority

# Langley Fork Park

With the consideration for the potential land exchange, NPS is responsible to evaluate the possible impacts of federal actions on the natural and human environment through the performance of an EA.



Fairfax County Park Authority

# Langley Fork Park

## Public Information Meeting October 13, 2011

Public input is always a key factor in the development of a park master plan.

When the Park Authority embarked on this process almost two years ago, the first step was to meet with the community.

### Comments heard in 2011

- ☐ Additional athletic fields
- ☐ Improved quality of the existing fields
- ☐ Lighted facilities
- ☐ Indoor facility, skatepark, non-team sports facilities
- ☐ No change to the park

Fairfax County Park Authority

## Comprehensive Plan

“Since this park is the only site in the northeastern quadrant of the planning district developed with athletic fields, these facilities should be upgraded and expanded to maximize their utilization. Should the western portion of the CIA property ever become available, priority should be placed on acquiring a portion of that site to connect Langley Fork with Langley Oaks Natural Resource Park. This addition to Langley Fork Park would also

and facilitate continuity of trail development along the boundary of Turkey Run Park.”

Countywide guidance is also an element that can influence the direction of a master plan. The County's Comprehensive Plan speaks specifically to Langley Fork Park, stating that the athletic facilities should be upgraded and expanded to maximize their utilization as well as preserving open space as an ecological buffer.



## Existing Conditions

The park today is developed with two diamond fields, two rectangle fields, two basketball courts as well as parking and an exercise trail.



# Natural and Cultural Resources

## Archaeology

A Phase I archaeological study was performed over the entire site, followed by a Phase II study in selected locations. Portions of the site appear to have been frequented by prehistoric peoples for making stone tools, as evidenced by many, many stone chips and a few identifiable items as seen here. Of particular interest was the uncovering of a prehistoric hearth site, carbon-dated at 300 B.C.



# Natural and Cultural Resources

## Wetland Hydrology

Large portions of the site are heavily wooded, although significantly impacted by invasive species. There are also several areas of wetland hydrology noted.

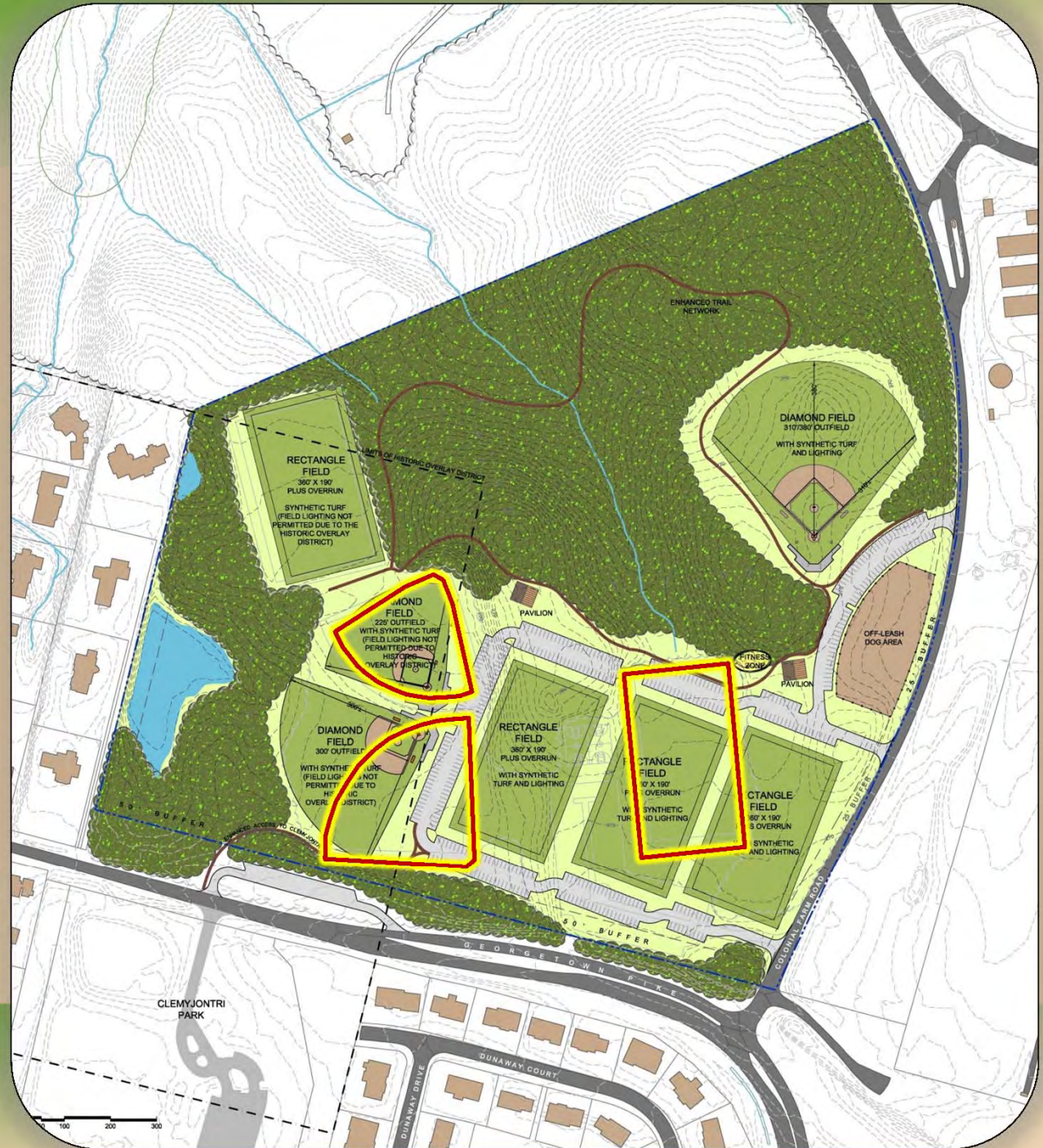


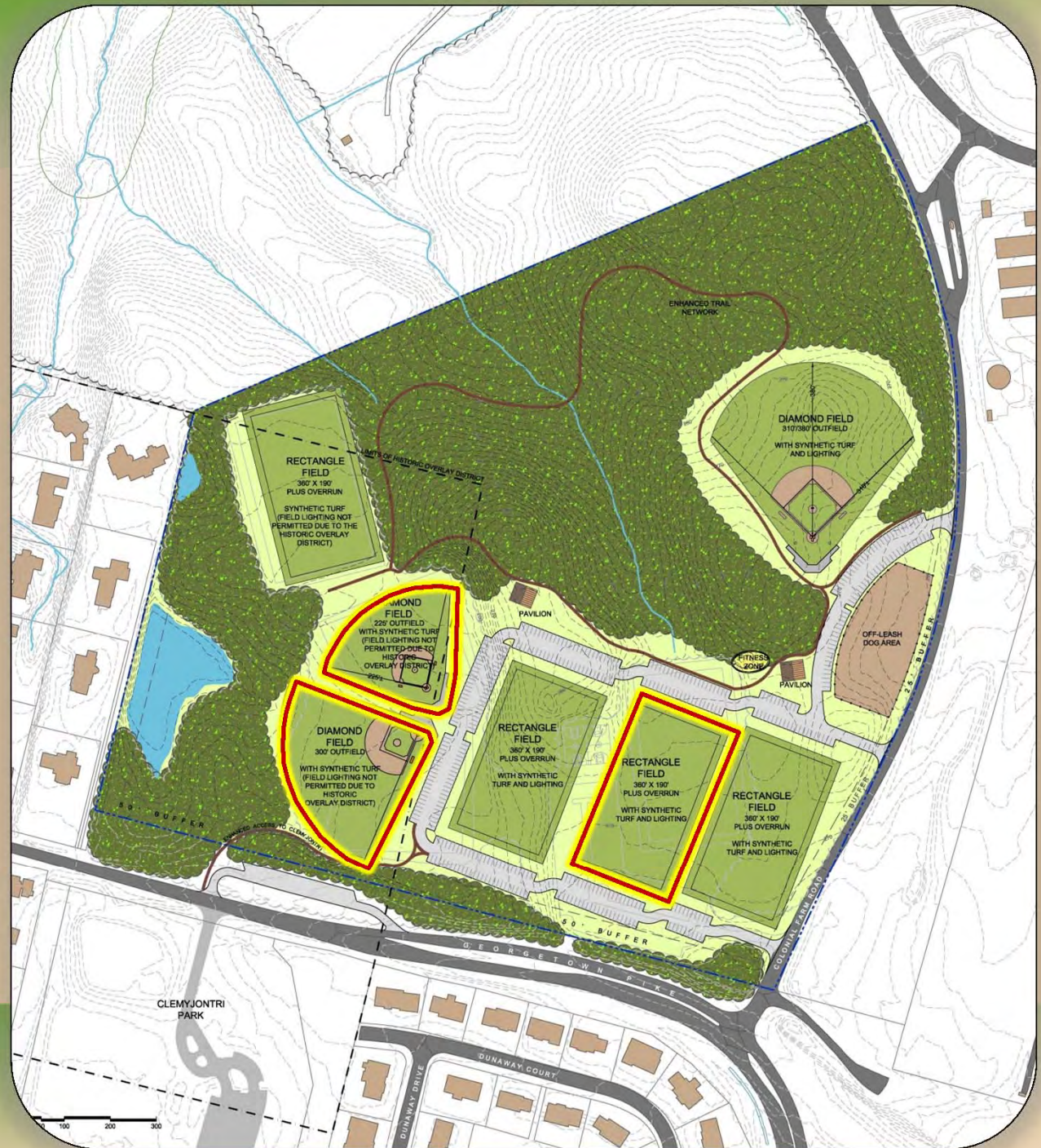
# Natural and Cultural Resources

## Langley Fork Historic Overlay District

An additional level of site protection is provided through the Langley Fork Historic Overlay District. The district imposes a series of development standards, most notable in the case of Langley Fork Park are restrictions on lighting and strong vertical elements.











**DRAFT**

# Conceptual Development Plan

- ADDITIONAL ATHLETIC FIELDS
- FITNESS ZONE

A fitness zone is included to provide additional active recreation features to serve the community. Fitness zones are a new element proposed in several FCPA parks with equipment is similar to what might be found in a gym. These features are very popular for teams warming up before play or by family members during practice, making them a great complement to the athletic fields.



**DRAFT**

# Conceptual Development Plan

- ADDITIONAL ATHLETIC FIELDS
- FITNESS ZONE
- PAVILIONS

The addition of two pavilions also serves to complement to the athletic focus of the park. The pavilions will provide a source of shade and water for the athletes and their families. The inclusion of restrooms will be a welcomed addition to those attending long games or practices.



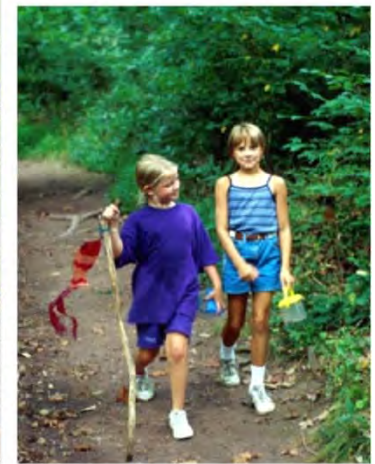
**DRAFT**

# Conceptual Development Plan

- ADDITIONAL ATHLETIC FIELDS
- FITNESS ZONE
- PAVILIONS
- OFF-LEASH DOG AREA

The McLean area has been seeking an appropriate location for a dog park for quite some time. This plan also allows the opportunity to establish an one-acre off-leash dog area at Langley Fork Park.





**DRAFT**

# Conceptual Development Plan

- ADDITIONAL ATHLETIC FIELDS
- FITNESS ZONE
- PAVILIONS
- OFF LEASH DOG AREA
- ENHANCED TRAIL NETWORK
- PARKING/ACCESS

Sufficient parking is provided to serve the dog park and each athletic field plus additional spaces for Clemijontri overflow.

In terms of site access, there currently is only one point of access from Colonial Farm Road. The plan revision reflects three locations to facilitate traffic flow when games transition.



**DRAFT**

# Conceptual Development Plan

- ADDITIONAL ATHLETIC FIELDS
- FITNESS ZONE
- PAVILIONS
- OFF LEASH DOG AREA
- ENHANCED TRAIL NETWORK
- PARKING/ACCESS
- SIGNAGE

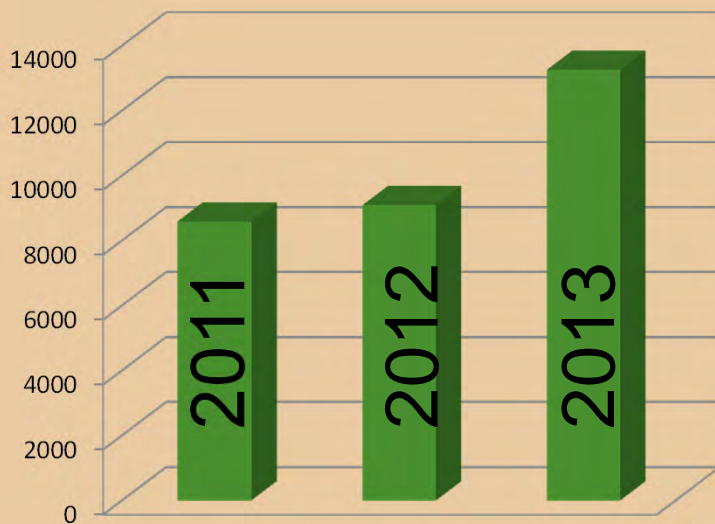
A signage feature is proposed as well. Establishing an entry feature near the intersection of Georgetown Pike and Colonial Farm Road will enhance visibility and recognition of the park..





# McLean/Great Falls League Participation

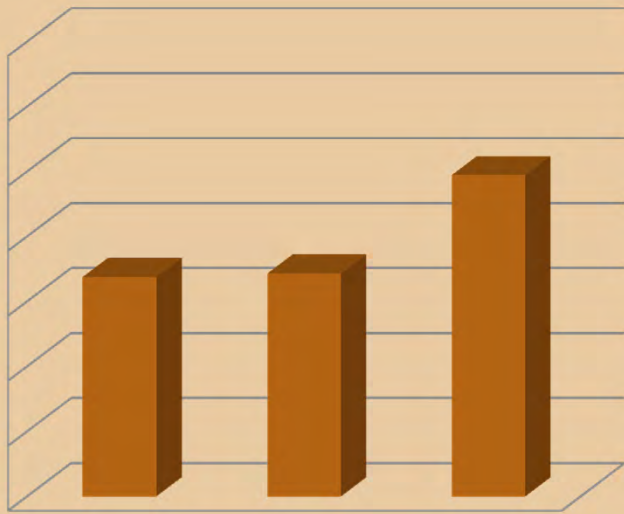
## SPRING REGISTRATION

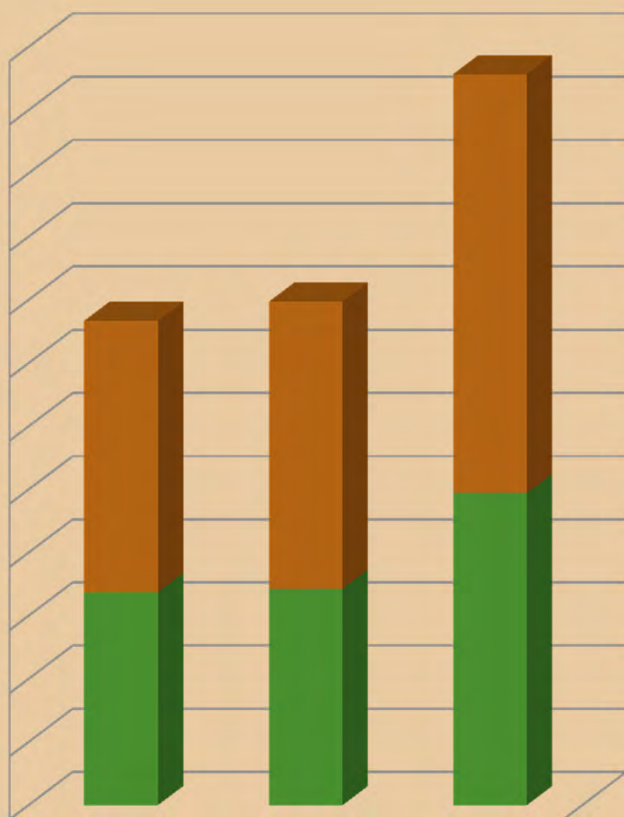


The McLean/Great Falls area has always seen active participation in team sports and the demand continues to grow.

Within the last couple of years, spring registrations have increased significantly.

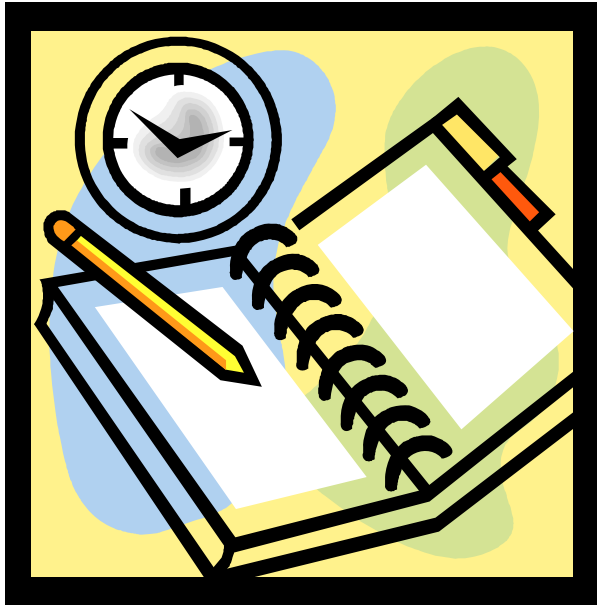






2011





Neighborhood and Community Services, the office that coordinates field scheduling, has maxed out the scheduling opportunities at all the fields that the Park Authority currently coordinates, including both park and school facilities.

An aerial photograph of a city, likely Langley, showing a dense residential and commercial area. A river flows through the lower-left portion of the image, and a major highway (likely Highway 1) runs along the bottom edge. The city is characterized by a mix of green spaces, buildings, and parking lots.

**DEMAND CONTINUES TO GROW ...**

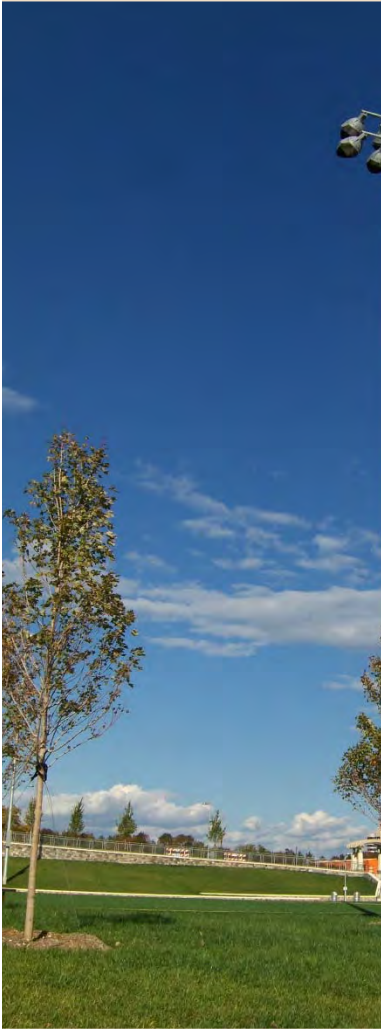
**BUT AVAILABLE LAND IS SCARCE**

**LANGLEY FORK PARK IS OUR  
BEST OPPORTUNITY TO  
ADDRESS THE NEED**



# Langley Fork Park

To make the best utilization of the new facilities, the intent is to maximize the usefulness of the fields with the option of synthetic turf on all fields and lighting (on those fields outside of the overlay district).



# Fairfax County Park Authority

Synthetic turf would improve the quality of play and offer opportunities for enhanced stormwater management.

**IMPROVED QUALITY OF PLAY**

**OPPORTUNITIES FOR  
ENHANCED STORMWATER MANAGEMENT**

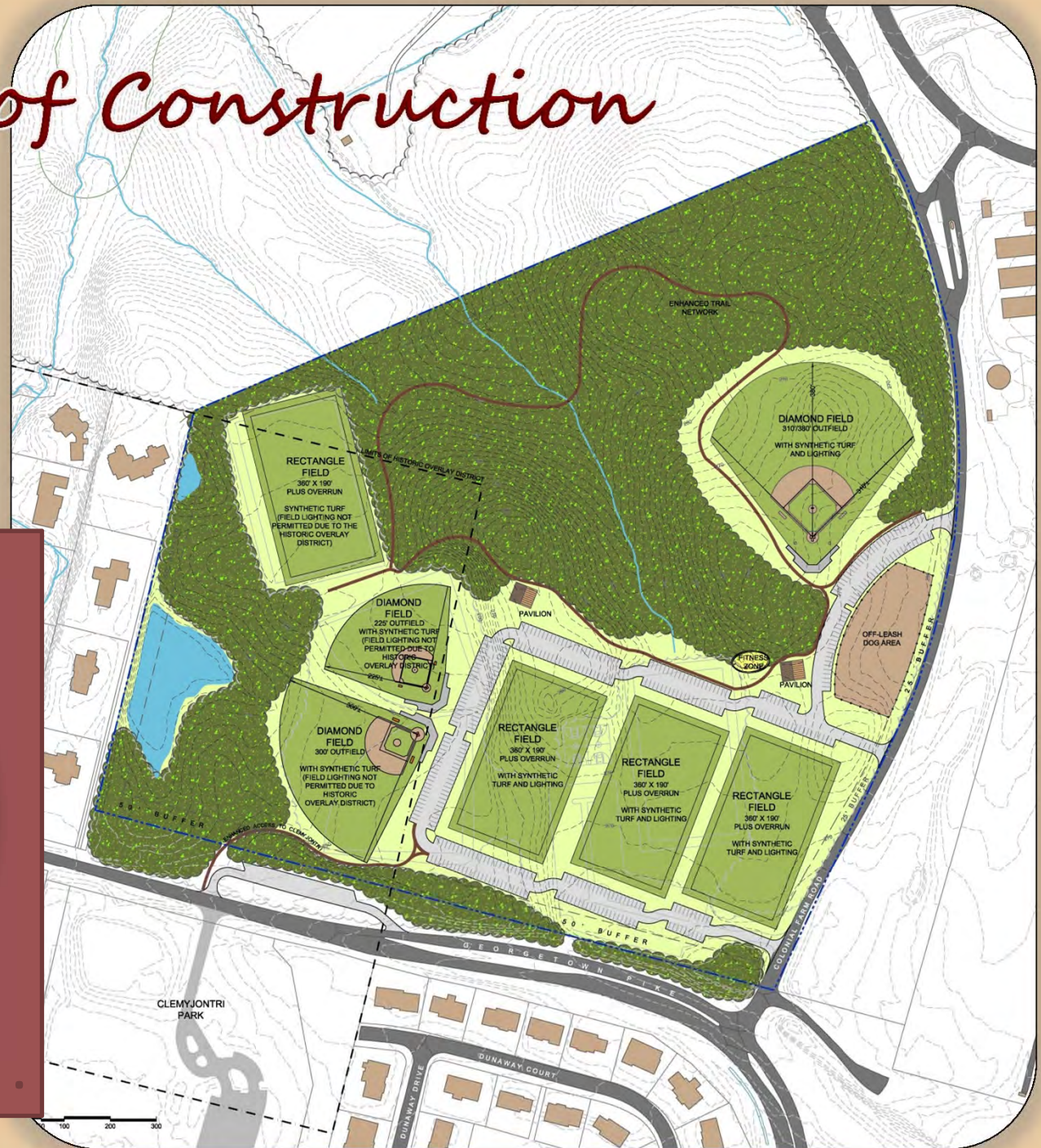


# *Field Lighting*

Fairfax County Park Authority  
developed an industry-leading  
standard for field lighting that  
limits off-field trespass and  
uplight

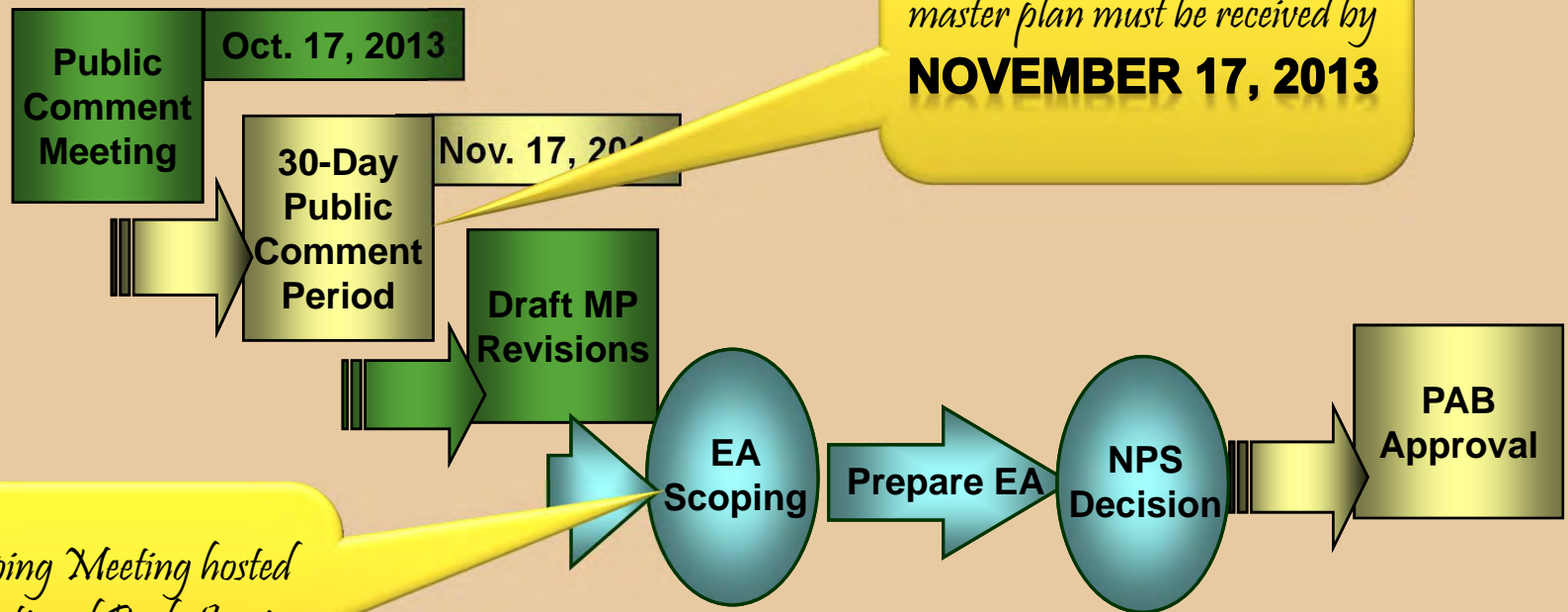
# Funding of Construction

With regard to funding the construction, no funds are currently allocated for this project. However, once there is an approved master plan, the most appropriate funding sources can be aligned with the project.



# Langley Fork Park

## The Master Plan Timeline



*All comments regarding the master plan must be received by*  
**NOVEMBER 17, 2013**

*EA Scoping Meeting hosted by the National Park Service*  
**DECEMBER 4, 2013**  
*Open to the public*

The National Park Service will officially start the public scoping for the EA at a meeting on December 4 at Franklin Sherman Elementary School starting at 7:00 p.m.

# Fairfax County Park Authority

