



FAIRFAX COUNTY PARK AUTHORITY



M E M O R A N D U M

TO: Chairman and Members
Park Authority Board

VIA: Jai Cole, Executive Director

FROM: Stephanie Leedom, Division Director
Planning and Development Division

DATE: January 6, 2022

Agenda

**Planning and Development Committee
(Committee of the Whole)
Wednesday, January 12, 2022 – 7:00 pm
Virtual
Chairman: Ken Quincy
Vice Chair: Mike Thompson**

1. Update of Infrastructure Projects Impacting Parkland (with presentation) – Information*
2. Tysons and Reston Status Report (with presentation) – Information
3. Clemyjontri Park Master Plan Revision (with presentation) – Alternative Option for Phase III Development – Action*

*Enclosures



If accommodations and/or alternative formats are needed, please call (703) 324-8563. TTY (703) 803-3354

Board Agenda Item
January 12, 2022

INFORMATION (with presentation)

Update of Infrastructure Projects Impacting Parkland (Countywide)

Staff continues to monitor ongoing transportation and other infrastructure projects that impact parkland throughout the County. An update to the Park Authority Board on the status of the projects occurs annually to provide the Park Authority Board information on the impacts and the benefits of these projects, which are at various stages of planning, design, and construction. The projects vary in size, scope, and impact to parkland. A full list of current transportation and infrastructure projects impacting parkland can be found in the attachment with details on their status. The following projects will be highlighted in the accompanying presentation to the board:

- I-495 Express Lanes NEXT
- Transform I-66 – Outside the Beltway (Trails)
- Shirley Gate Road Extension
- Snowden-Ashford Roadway Improvement Project
- Cinder Bed Road Bikeway
- Compton Road Shared Use Path
- Mount Vernon Highway Walkway
- Pleasant Valley Road Shared Use Path
- Chesterbrook Road Walkway (Phase 2)
- Little River Turnpike Walkway
- Route 50 Walkway

ENCLOSED DOCUMENTS:

Attachment 1: Infrastructure Projects Impacting Parkland (January 2021 – December 2021)

STAFF:

Jai Cole, Executive Director
Sara Baldwin, Deputy Director/COO
Aimee Vosper, Deputy Director/CBD
Judy Pederson, Public Information Officer
Cindy Walsh, Director, Park Services Division
Stephanie Leedom, Director, Planning & Development Division
Kurt Louis, Director, Park Operations Division
Liz Crowell, Manager, Archaeology & Collections Branch
John Burke, Manager, Natural Resources Branch

Board Agenda Item
January 12, 2022

Cindy McNeal, Project Coordinator, Real Estate Services Branch
Andrea Dorlester, Development Review Section Chief, Park Planning Branch
Elizabeth Iannetta, Trails & Infrastructure Coordinator, Park Planning Branch

Infrastructure Projects Impacting Parkland (January 2021 through December 2021)

Roadway Type	Project Name	Project Status	Lead Agency	Supervisor District(s)	Impacted / Adjacent Park(s)
Interstate	I-495 Express Lanes Northern Extension (NEXT)	Design	VDOT	Dranesville, Providence	Scotts Run Nature Preserve
			A public information meeting was held on September 29, 2021; The Preliminary Section 4(f) letter executed in May 2021; Section 6(f) impacts and replacement land negotiations are ongoing		
	I-495 & I-270 Managed Lanes (P3) Project (Renamed "Op Lanes Maryland")	Environmental Review	VDOT/MDOT	Dranesville	Scotts Run Nature Preserve
			Currently no impacts anticipated to FCPA property; Staff continues to monitor the project		
Interstate	Transform I-66 - Inside the Beltway	Construction	VDOT	Providence	Idylwood
			Construction continues; A new W&OD Trail bridge was opened in March 2021; The new direct access ramp to West Falls Church Metrorail opened in July 2021; Major construction activity is nearly complete		
Interstate	Transform I-66 - Outside the Beltway (and Associated Trails)	Construction (Hwy) Design (Trails)	VDOT	Braddock, Providence, Springfield, Sully	Briarwood, Random Hills, ECL, Cub Run SV, Towers
			Roadway construction continues throughout the project corridor; Associated trail projects have moved further along in the design stages		
Primary Roads	Route 1 Widening - Jeff Todd Way to Napper Road	Design	VDOT	Mount Vernon, Lee	Pole Road, Vernon Heights, Little Hunting Creek
			Staff is coordinating with the VDOT project team regarding potential impacts to the existing access easements to Pole Road Park		
	Route 7 Widening	Construction	VDOT	Dranesville, Hunter Mill	Colvin Run Mill, Colvin Run SV, Great Falls Nike, Difficult Run SV
			Construction continues throughout the corridor; Rt 7 Interceptor project underway		
	Route 29 Bridge Replacement over Cub Run	Pre-Construction	VDOT	Sully	Cub Run SV
		Construction is anticipated to begin in Spring 2022			
Primary Roads	Route 29 Widening - Union Mill to Buckley's Gate	Land Acquisition	VDOT	Sully, Springfield	Willow Pond
			Final Section 4(f) concurrence letter executed on June 22, 2021; Coordination between the VDOT project and the adjacent housing development is ongoing as the VDOT project transitions into the Land Acquisition stage		
Primary Roads	Fairfax Co Parkway Widening & Popes Head Road Interchange	Land Acquisition	VDOT/FCDOT	Braddock, Springfield	Patriot, Popes Head
			Final Section 4(f) concurrence issued on October 13, 2020; Adjacent zoning application for La Biblia Church was approved by the BZA in October 2021		

<u>Roadway Type</u>	<u>Project Name</u>	<u>Status</u>	<u>Lead Agency</u>	<u>Supervisor District(s)</u>	<u>Impacted / Adjacent Park(s)</u>
Secondary Roads	Braddock Road Multimodal Corridor Improvements	Design	VDOT	Braddock	Wakefield, Howrey Field, Long Branch SV, Canterbury Woods
			The corridor study was reclassified as an improvement project in Summer 2020; VDOT has begun design work including preliminary survey work		
	Burke Road Realignment	Land Acquisition	FCDOT	Braddock	Pohick Creek SV
			Design review complete; Land Acquisition phase begun; A future public hearing is tentatively planned for February 2022		
	Hunter Mill Road Bridge Replacement over Colvin Run	Construction	VDOT	Hunter Mill	Lake Fairfax, Colvin Run SV
			Construction is underway; Scheduled completion is Fall 2022		
	Old Courthouse Road & Besley Road Realignment	Land Acquisition	FCDOT	Hunter Mill	Wolf Trails, Wolftrap SV
Design review complete; Land Acquisition phase begun; Early utility relocation work to begin Fall/Winter 2021					
Shirley Gate Road Extension	Design	FCDOT	Springfield	Patriot Park	
		Design Public Hearing held on September 21, 2021			
Snowden-Ashford Roadway Improvement	Land Acquisition	FCDOT	Mount Vernon	Laurel Hill	
		Design review complete; Land Acquisition phase begun			
Pedestrian & Bicycle Projects	ActiveFairfax (Countywide Trails Plan Update)	Study	FCDOT	Countywide	Various
			A two-phased updating of the Countywide Trails Plan; Phase 1 completed Fall 2021; Phase 2 will include specific trail plan recommendations and updates; FCPA staff involved in multiple working groups; Public input on the project's Draft Vision, Goals & Objectives held in 2021; Input on a "Safe Streets for All" program held in Nov 2021		
	Chesterbrook Road Walkway (Phase 2)	Design	FCDOT	Dranesville	Little Pimmit Run SV
			Design review underway		
	Cinder Bed Road Bikeway	Design	FCDOT	Lee	Island Creek
Section 4f document for FCPA parcels executed April 2021; Public Meeting held May 10, 2021; Stormwater comments from DPWES submitted to FCDOT via FCPA					
Compton Road Shared Use Path	Design	VDOT	Sully	Cub Run SV	
		Design review and environmental impact review underway			
Little River Turnpike Walkway		FCDOT	Mason	Poe Terrace Park	
		Design review underway			

Roadway Type	Project Name	Status	Lead Agency	Supervisor District(s)	Impacted / Adjacent Park(s)
Pedestrian & Bicycle Projects (cont)	Mount Vernon Highway Trail	Land Acquisition	FCDOT	Mount Vernon	Grist Mill
			Land Acquisition phase underway; Utility relocation work began June 2021; Trail construction anticipated in Fall/Winter 2021		
	Pleasant Valley Road Shared Use Path	Design	FCDOT	Sully	Elklick Preserve, Sully Woodlands
			Design review underway		
	Route 50 Walkway	Design	FCDOT	Providence	Towers Park
			Design review underway		



FAIRFAX COUNTY
PARK AUTHORITY



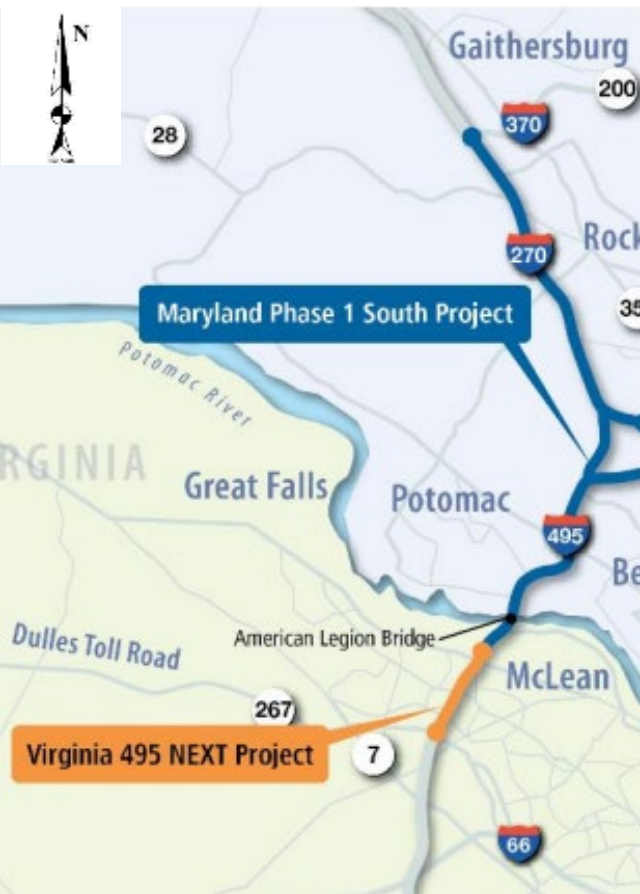
Infrastructure Projects Impacting Parkland

Annual Update

January 2021 – December 2021

The following projects have been selected for this presentation as they are new, notable or have had more activity over the past year since the last update:

- I-495 Express Lanes NEXT
- Transform I-66 – Outside the Beltway (Trails)
- Shirley Gate Road Extension
- Snowden-Ashford Roadway Improvement Project
- Cinder Bed Road Bikeway
- Compton Road Shared Use Path
- Mount Vernon Highway Walkway
- Pleasant Valley Road Shared Use Path
- Chesterbrook Road Walkway (Phase 2)
- Little River Turnpike Walkway
- Route 50 Walkway



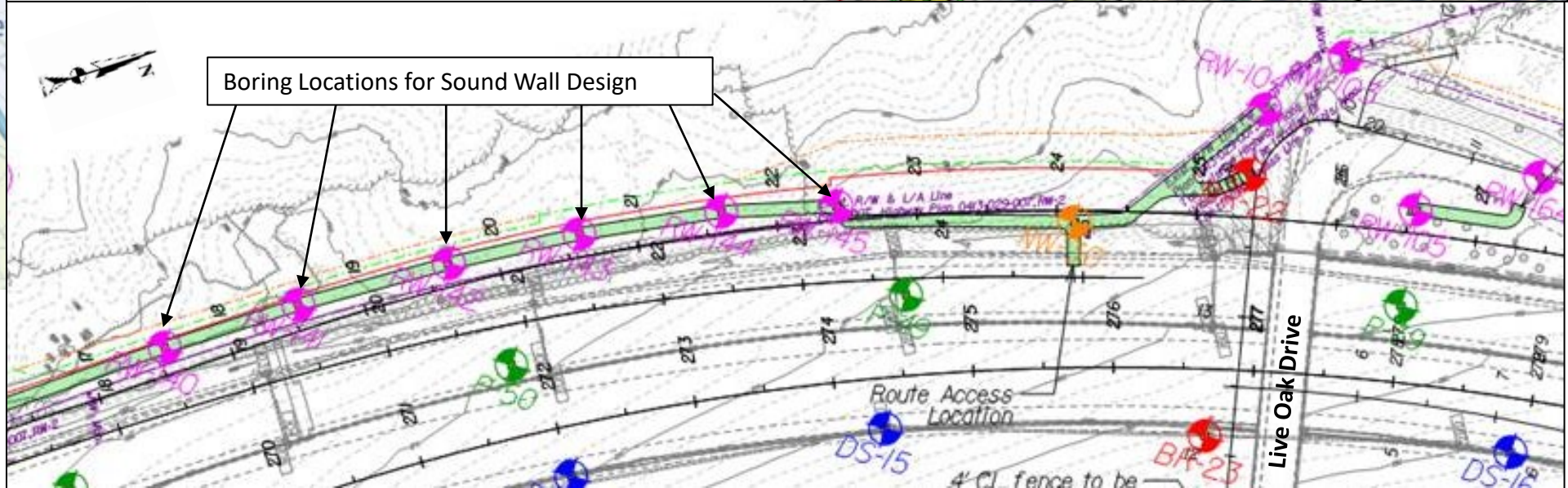
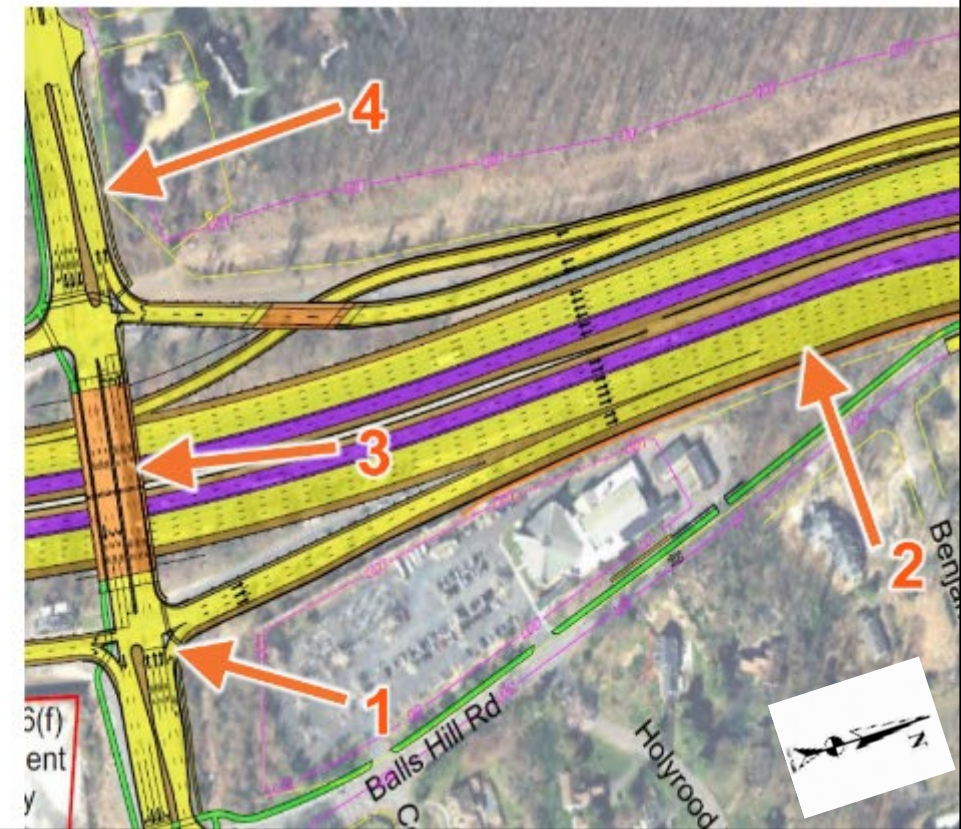
Georgetown Pike Interchange

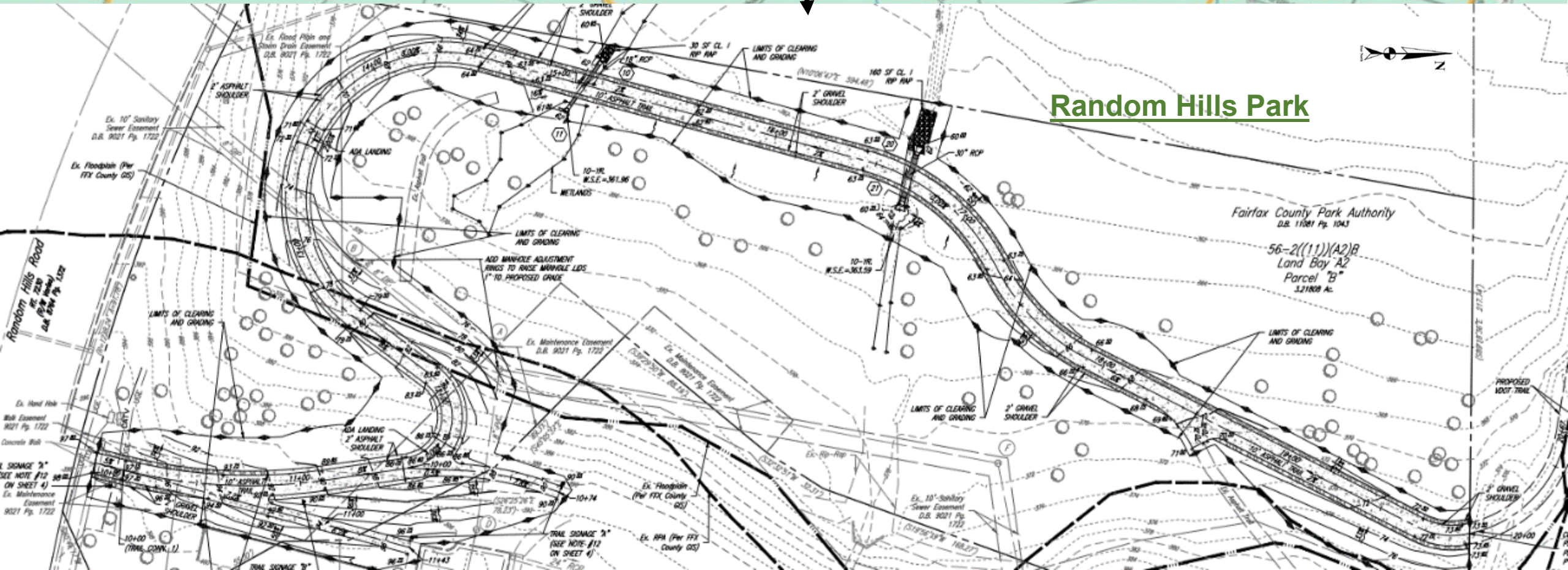
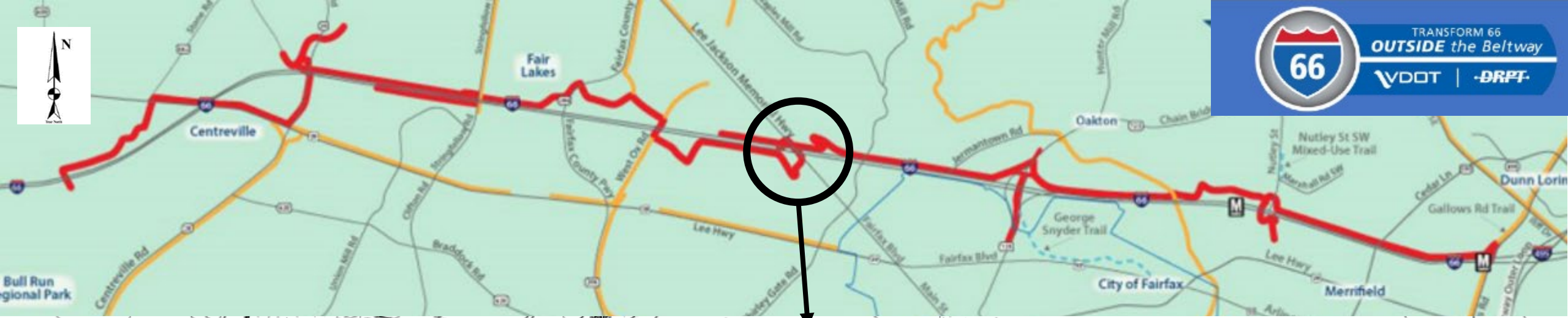
Revised Georgetown Pike interchange ramps configuration:

1. Channelized free-flow right-turn from westbound Georgetown Pike to northbound I-495
2. Acceleration and merge lane with increased merge distance on northbound I-495 on-ramp

Revised Georgetown Pike overpass typical section:

3. Wider bridge with six-foot-wide sidewalk on north side of bridge
4. Trail connection to Scotts Run Nature Preserve





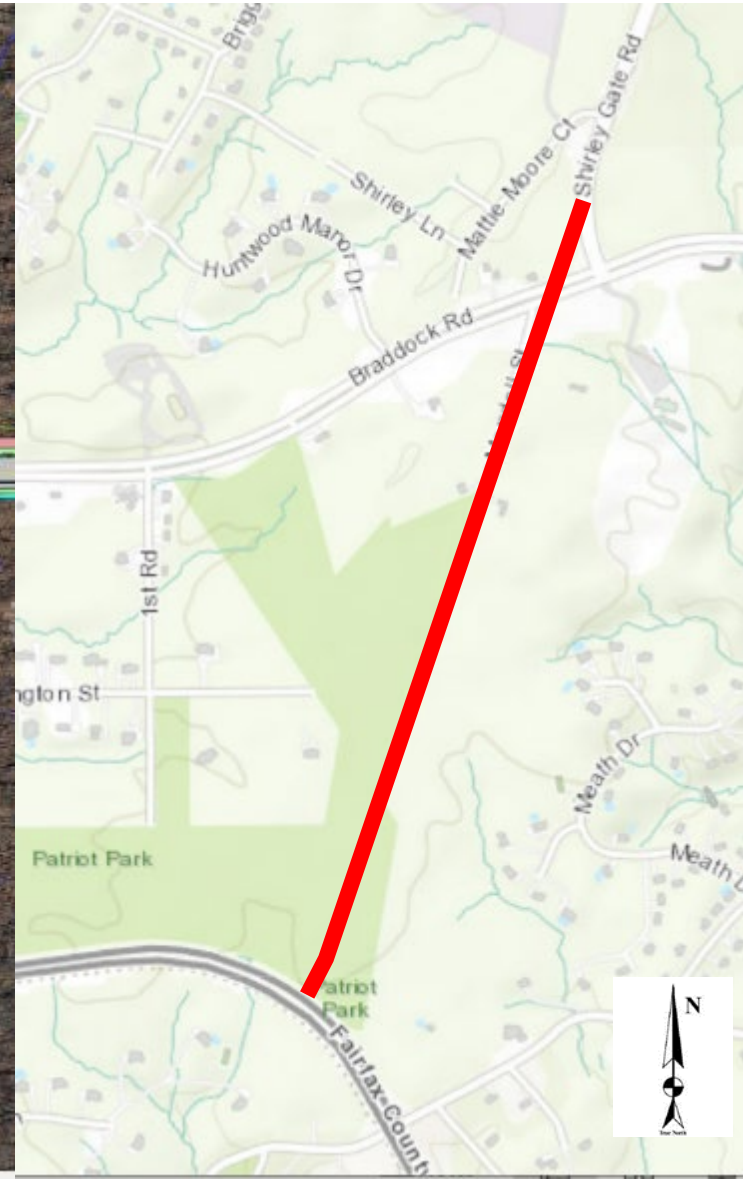
Random Hills Park





Shirley Gate Road Extension:

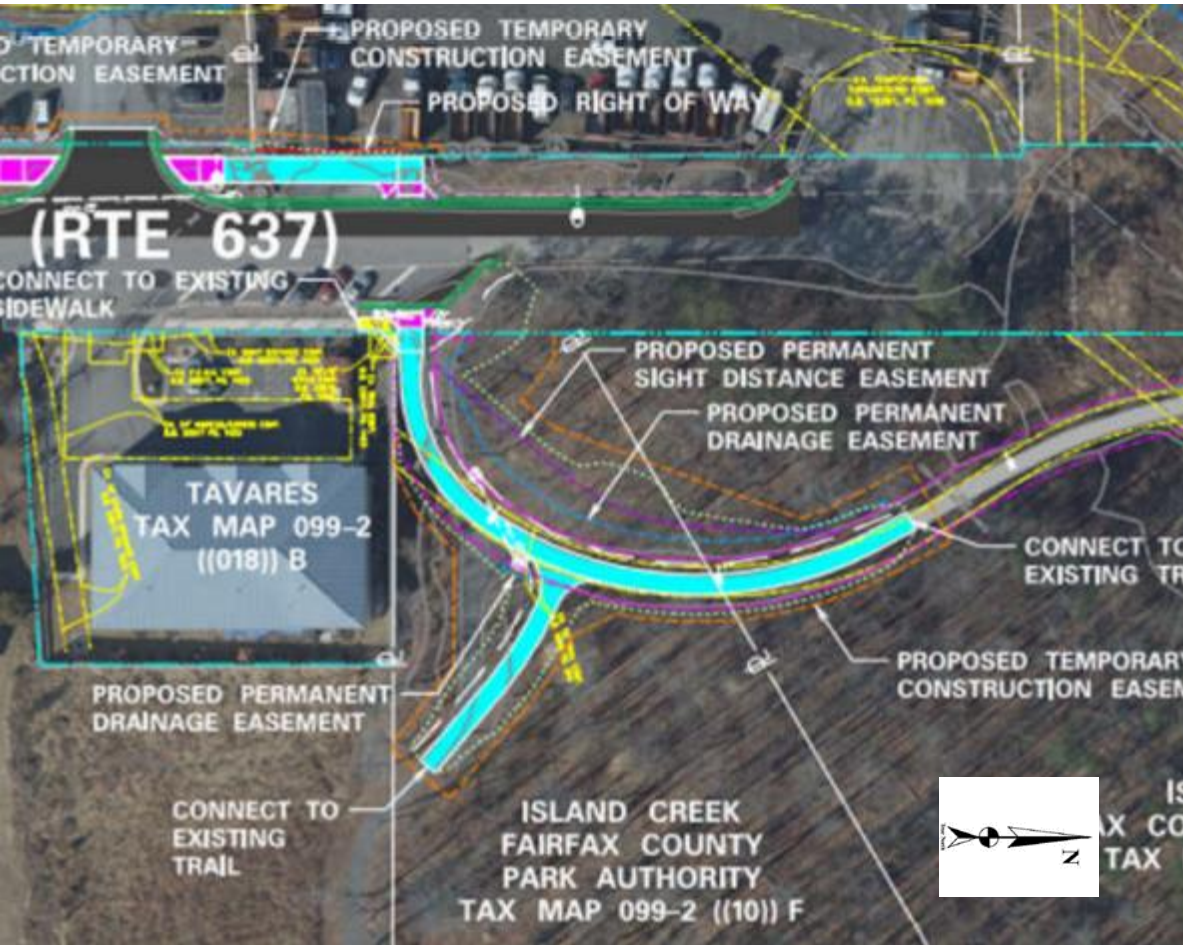
This project will initially construct a 2-lane road, and ultimately a 4-lane road, that connects the Shirley Gate Road/Braddock Road intersection with the Fairfax County Parkway, giving drivers an alternative access to I-66 East.





Cinder Bed Road Bikeway:

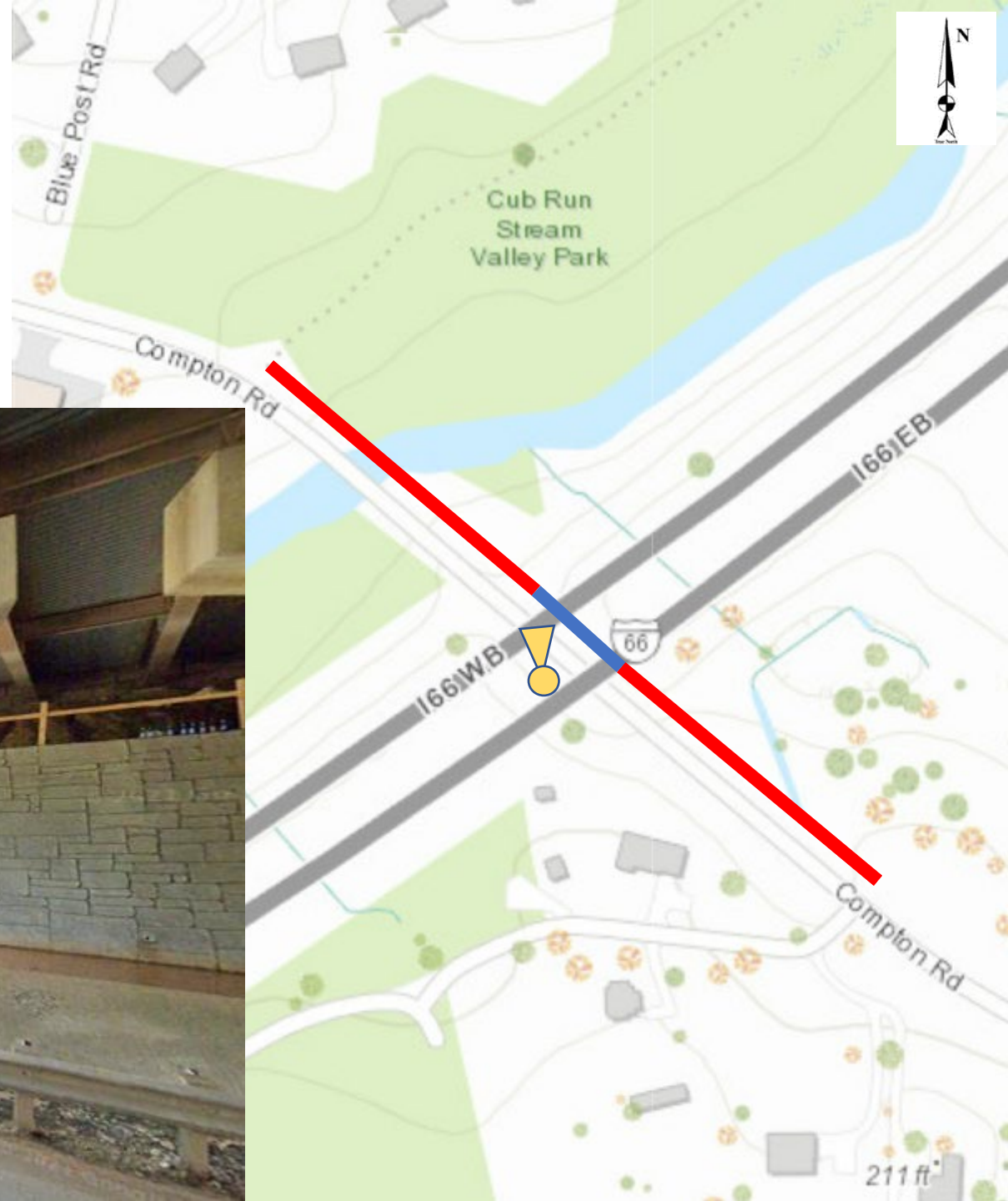
This project will construct a continuous shared use path On Cinder Bed Road between Newington Road and the Franconia/Springfield Metro Station.





Compton Road Shared Use Path:

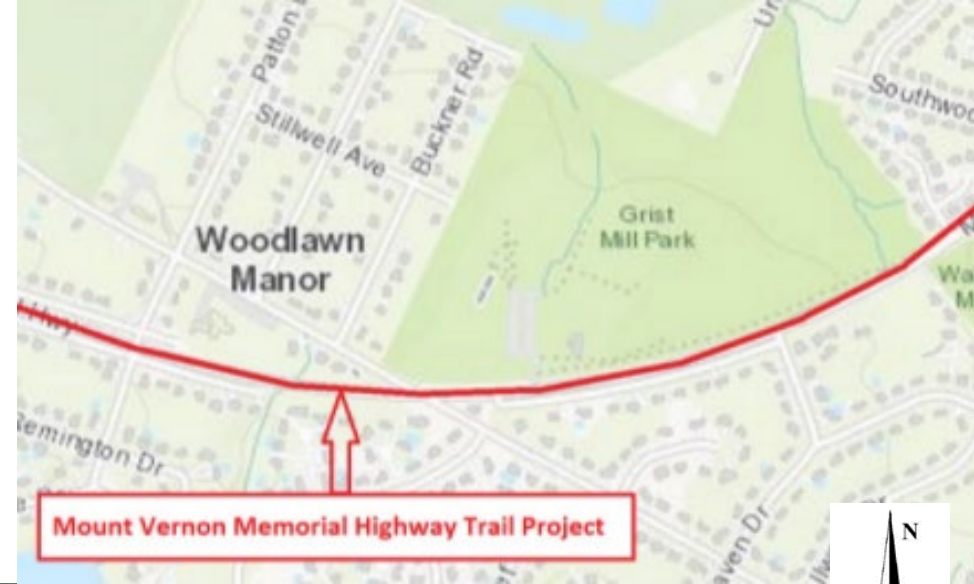
This project will construct a 10-foot-wide shared-use path along NB Compton Road from the Bull Run Special Events Center Access Road to just south of the I-66 bridge, and from just north of the I-66 bridge to a connection with the existing FCPA Cub Run Trail.





Mount Vernon Highway Walkway:

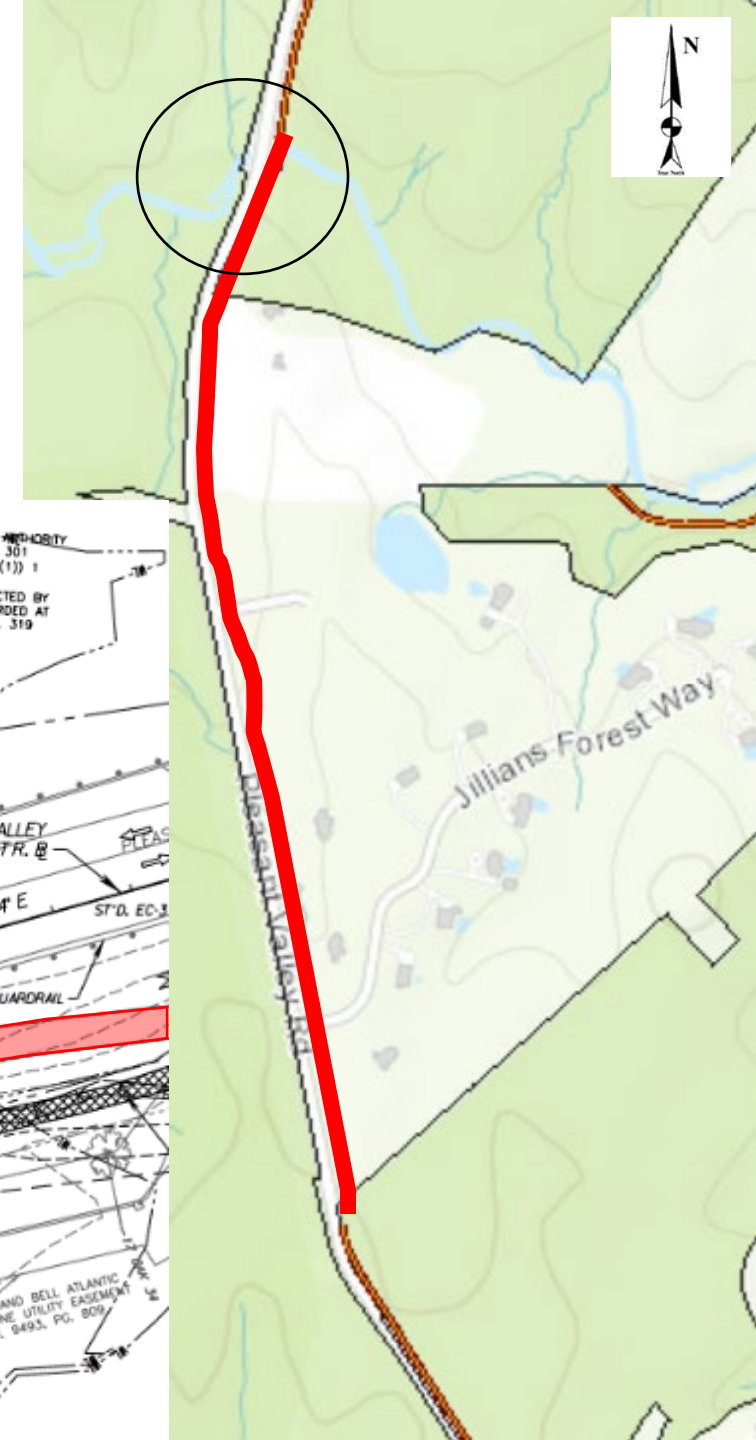
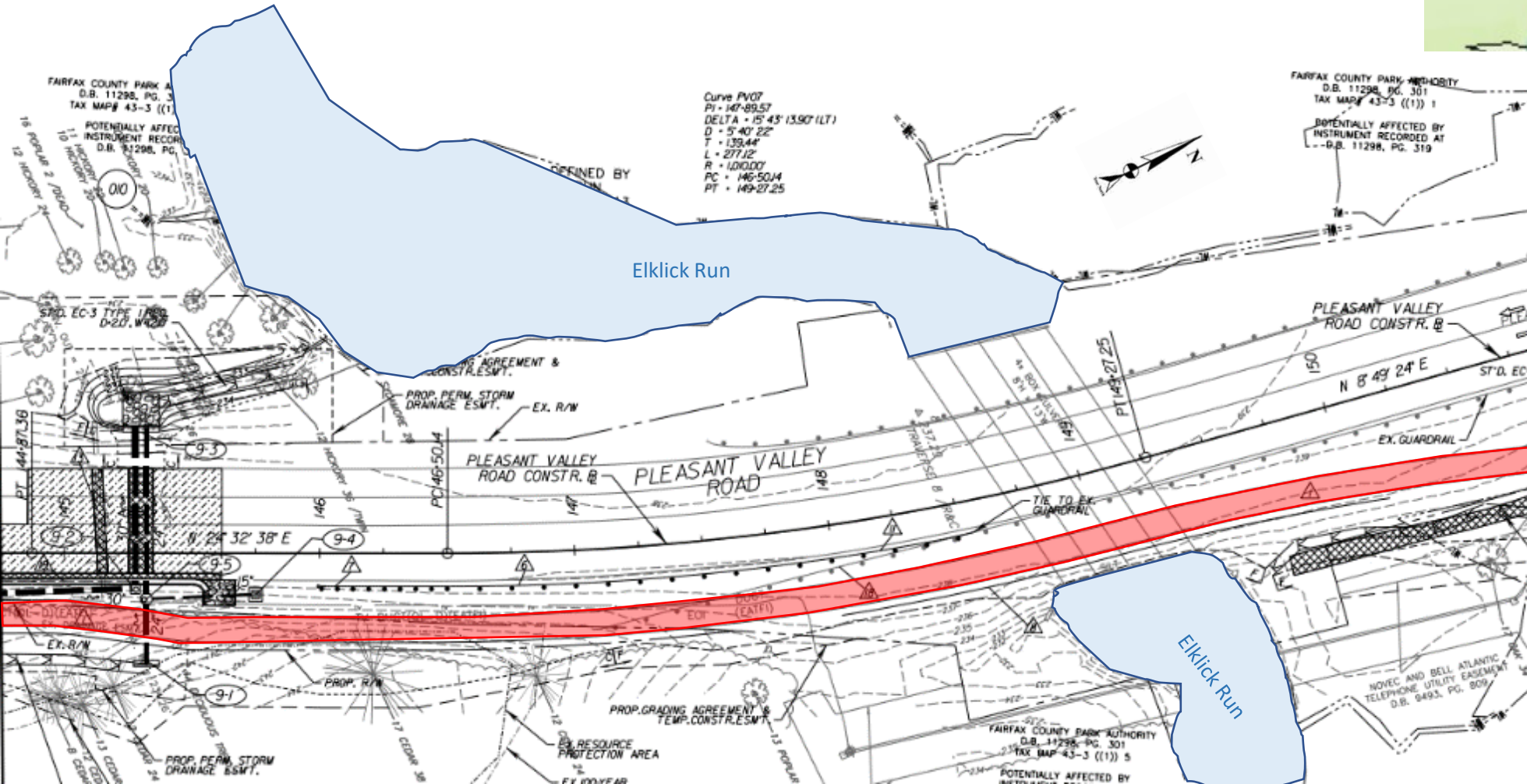
This project will complete missing segments of the Potomac Heritage National Scenic Trail between Richmond Highway (Route 1) and Southwood Drive for a length of approximately two miles.





Pleasant Valley Road Shared Use Path:

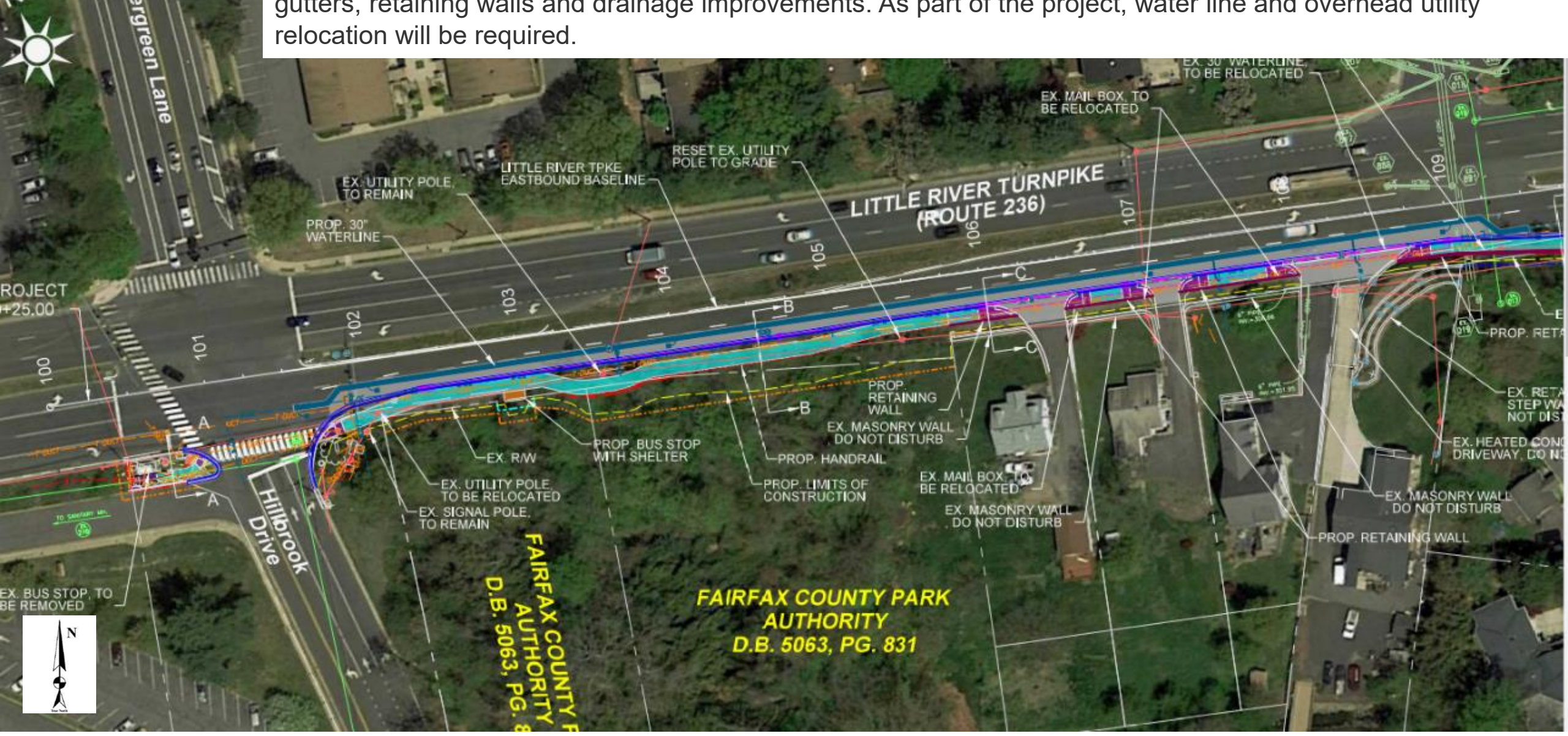
This project will construct approximately 1 mile of the missing pedestrian facility along the east side of Pleasant Valley Road. The project will include stormwater improvements along the roadway that will impact parkland on both sides of the corridor.





Little River Turnpike Walkway:

This project will construct 1,550 linear feet of 9-foot wide curb abutted sidewalk between Hillbrook Drive and Little River Run Drive on the eastbound side of the road. The project features new pedestrian signalization (a Walk/Don't Walk sign at Little River Turnpike and Hillbrook Drive), bus stop loading pads, curbs and ramps, gutters, retaining walls and drainage improvements. As part of the project, water line and overhead utility relocation will be required.



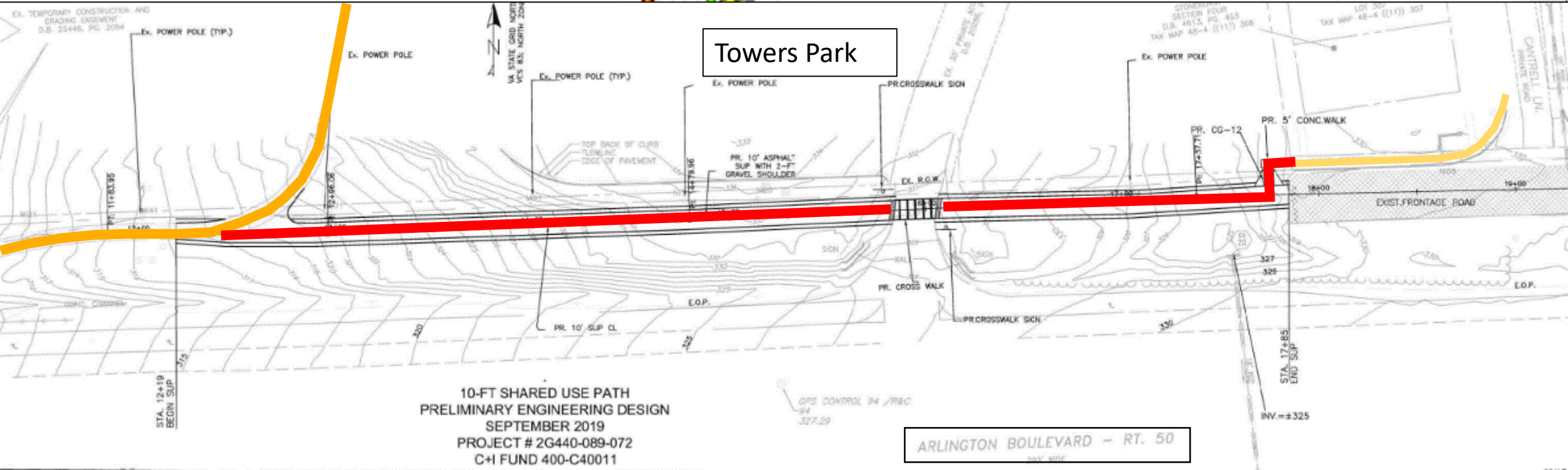
FAIRFAX COUNTY
AUTHORITY
D.B. 5063, PG. 8

FAIRFAX COUNTY PARK
AUTHORITY
D.B. 5063, PG. 831



Route 50: Blake Lane to Stonehurst Drive:

This project will construct a 10-foot wide shared use path on the north side of Route 50 from the existing 8-foot wide asphalt walkway to the existing service drive west of Stonehurst Drive



10-FT SHARED USE PATH
PRELIMINARY ENGINEERING DESIGN
SEPTEMBER 2019
PROJECT # 2G440-089-072
C+I FUND 400-C40011

ARLINGTON BOULEVARD - RT. 50

Board Agenda Item
January 12, 2022

INFORMATION (with presentation)

Tysons and Reston Status Report (Providence, Dranesville, and Hunter Mill Districts)

The status of ongoing planning and implementation efforts related to the adoption of transit-oriented Comprehensive Plans for Tysons and Reston, including updates on rezoning application review, work with the Tysons and Reston Steering Committee, coordination with other county agencies, and information on new and future parks and facilities will be provided. The report will also provide a brief overview of the newly launched [Tysons Tracker](#) and [Reston Park Monitoring Web Application](#) that highlight publicly accessible urban parks in Tysons and Reston Transit Station Areas.

ENCLOSED DOCUMENTS:

None

STAFF:

Jai Cole, Executive Director

Sara Baldwin, Deputy Director/COO

Aimee Vosper, Deputy Director/CBD

Stephanie Leedom, Director, Planning and Development Division

Andrea L. Dorlester, Development Review Section Chief, Park Planning Branch

Jasmin Kim, Senior Park Planner, Park Planning Branch

Tysons & Reston Parks & Recreation Update

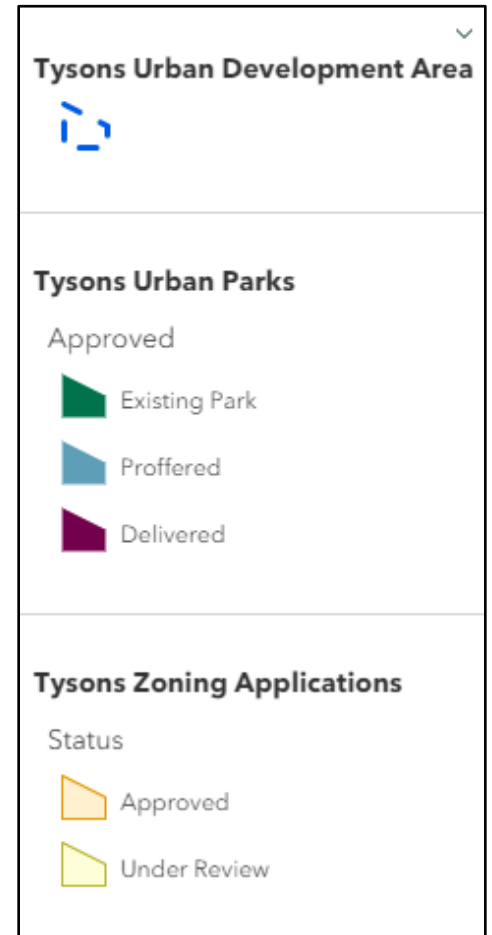
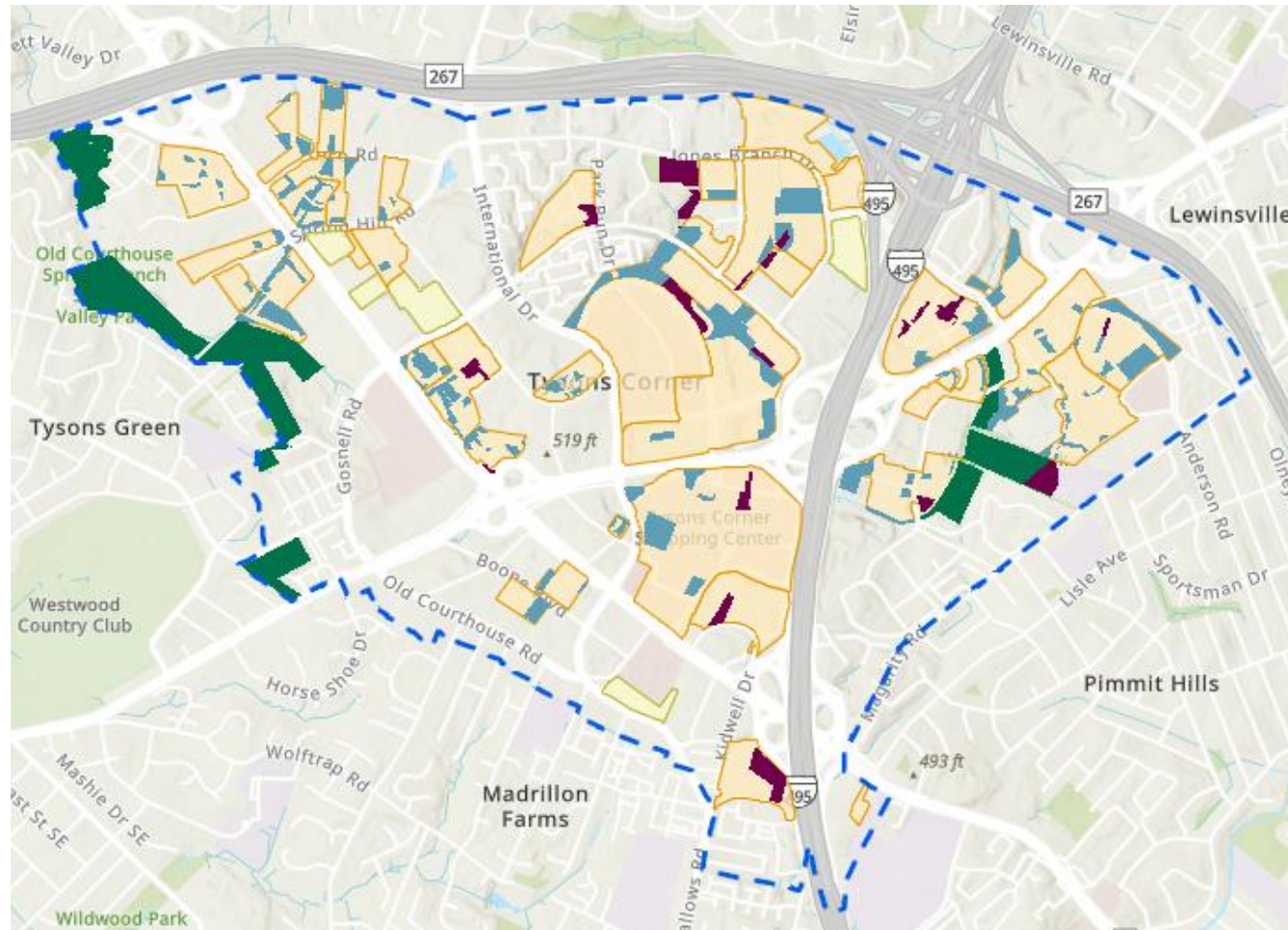
**Park Authority Board
Planning & Development Committee Meeting
January 12, 2022**



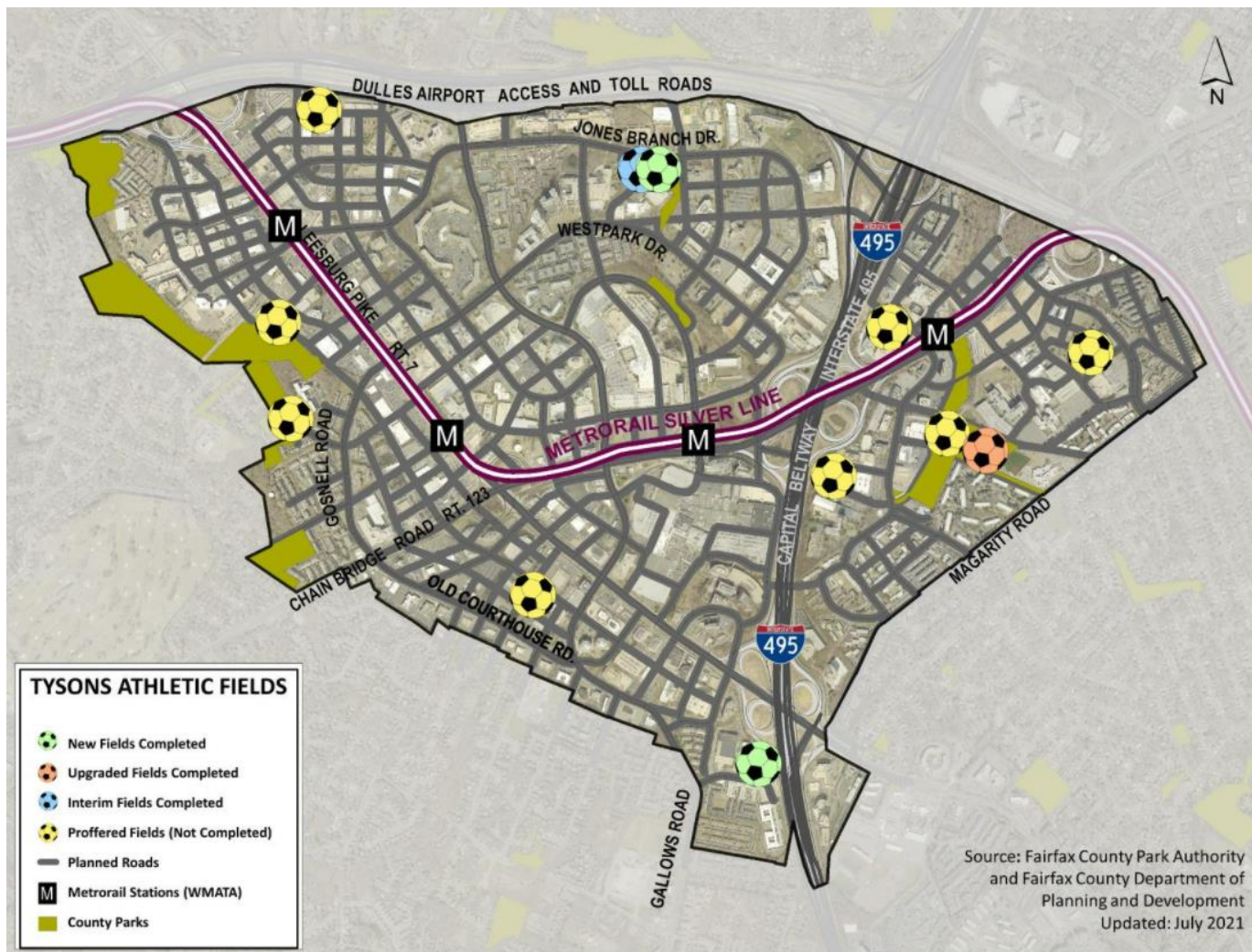
**Jasmin Kim, Senior Park Planner
Planning and Development Division**

Tysons has more than a Dozen New Urban Parks

- 95 acres proffered since 2010
- 19.8 acres delivered since 2010 in 14 park spaces
- 1.5 additional acres proffered in 2021

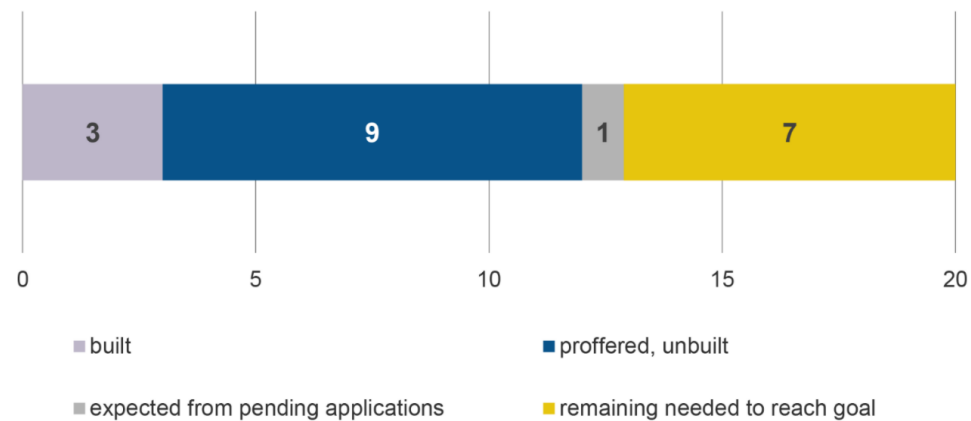


More than Halfway to Goal for Athletic Field Commitments



- 2 new full-size rectangles
- 1 upgraded diamond field
- Commitment to build or fund 10 more fields

Progress towards Comprehensive Plan Athletic Field Goal



Introducing the Tysons Tracker Online Data Hub

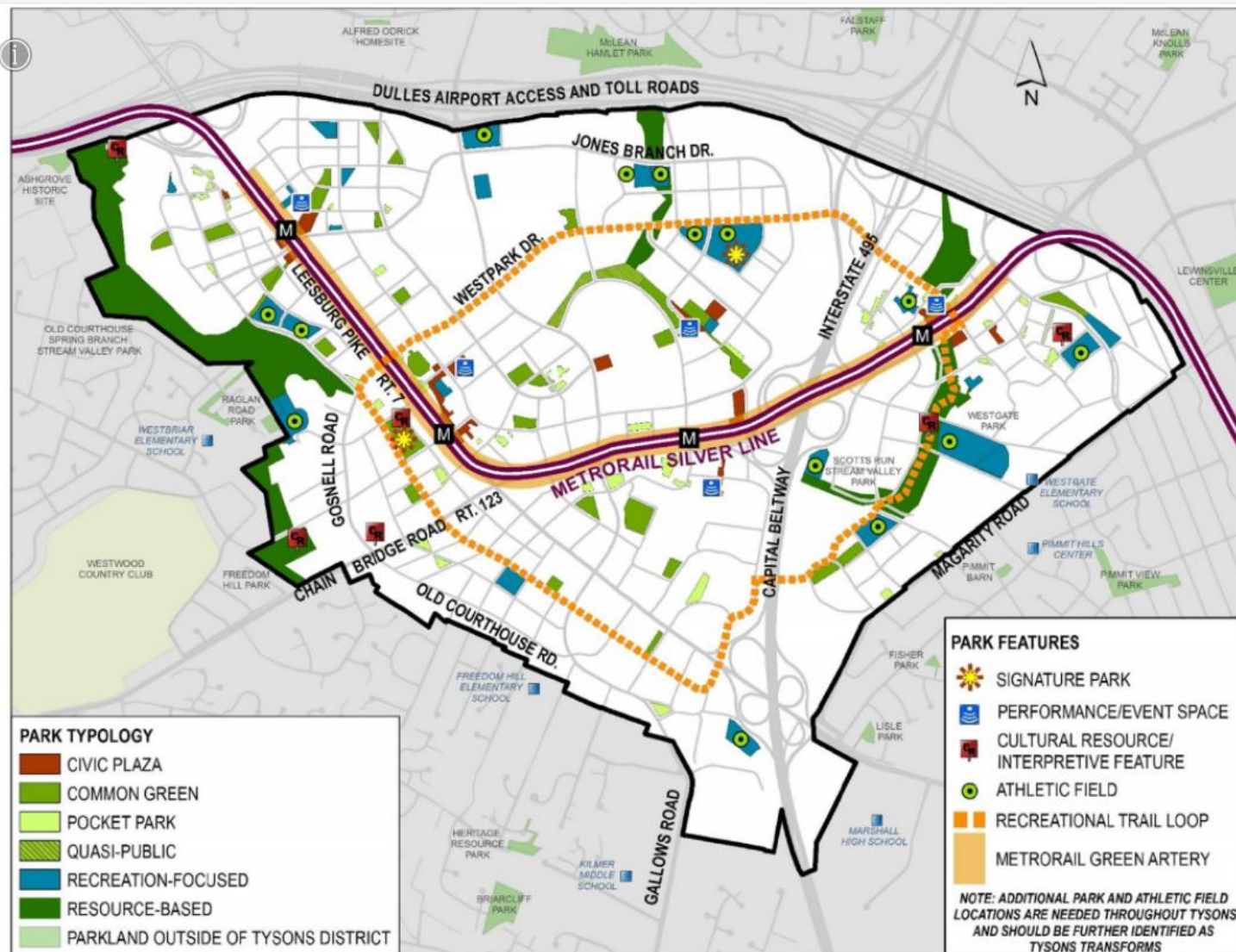


<https://tysons-tracker-fairfaxcountygis.hub.arcgis.com/apps/urban-park-spaces-/explore>



Parks and Recreational Facilities

Parks and recreational facilities are essential for creating a high quality of life for residents and visitors, as well as for achieving environmental goals. The Plan calls for publicly accessible parks in an amount consistent with the County's adopted urban park service level standards and Plan recommendations. The Tysons Park System envisions a mix of urban pocket parks, civic plazas, common greens, recreation-focused parks, and 20 new athletic fields. The Plan calls for a "green network" of park open spaces connecting all of Tysons' districts and integrating urban parks with existing environmentally sensitive areas. The [Tysons Park System Concept Plan \(2014\)](#) helps guide the review of rezoning applications for Tysons Park System development.



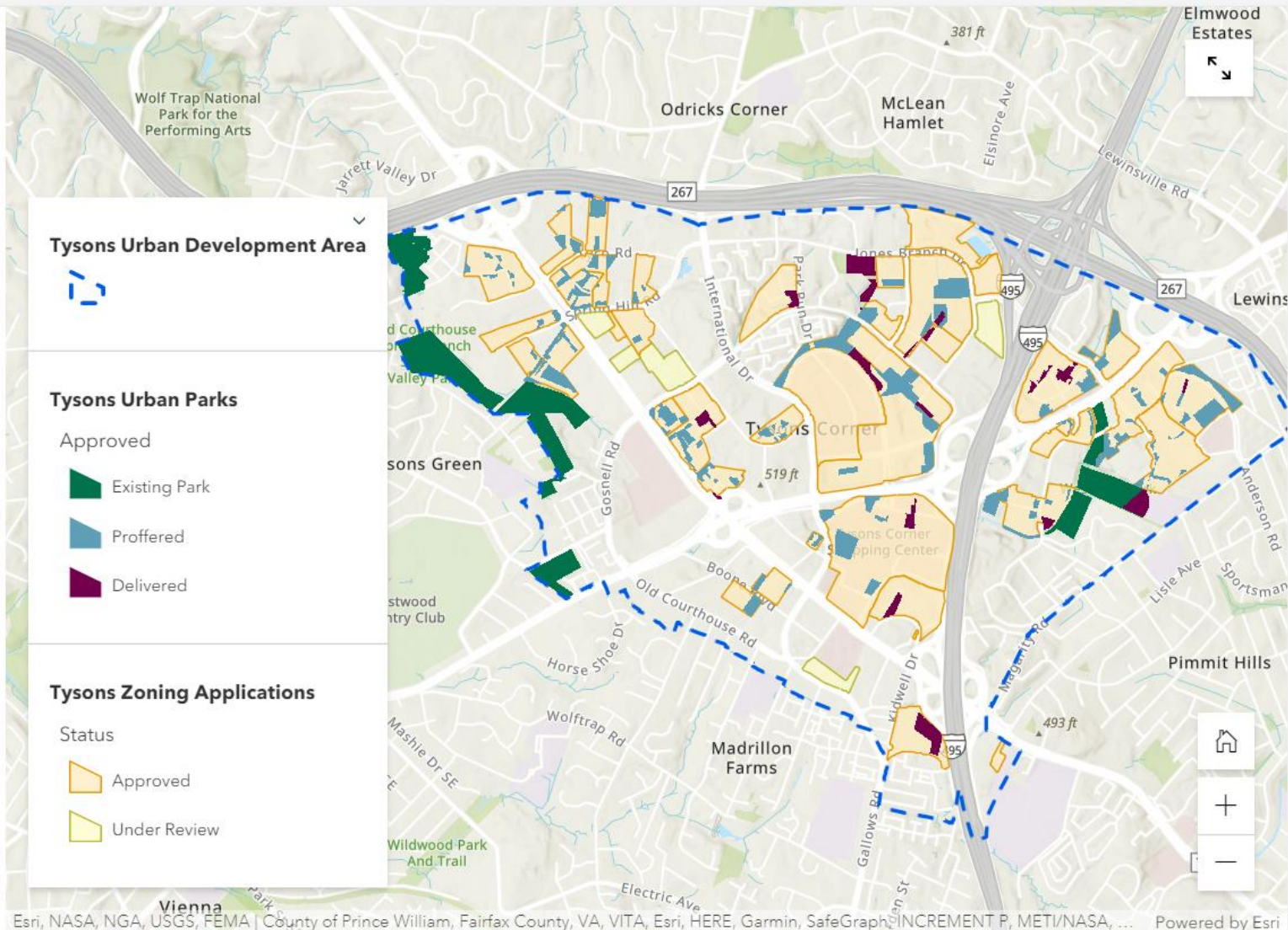
Existing and Proffered Park Facilities

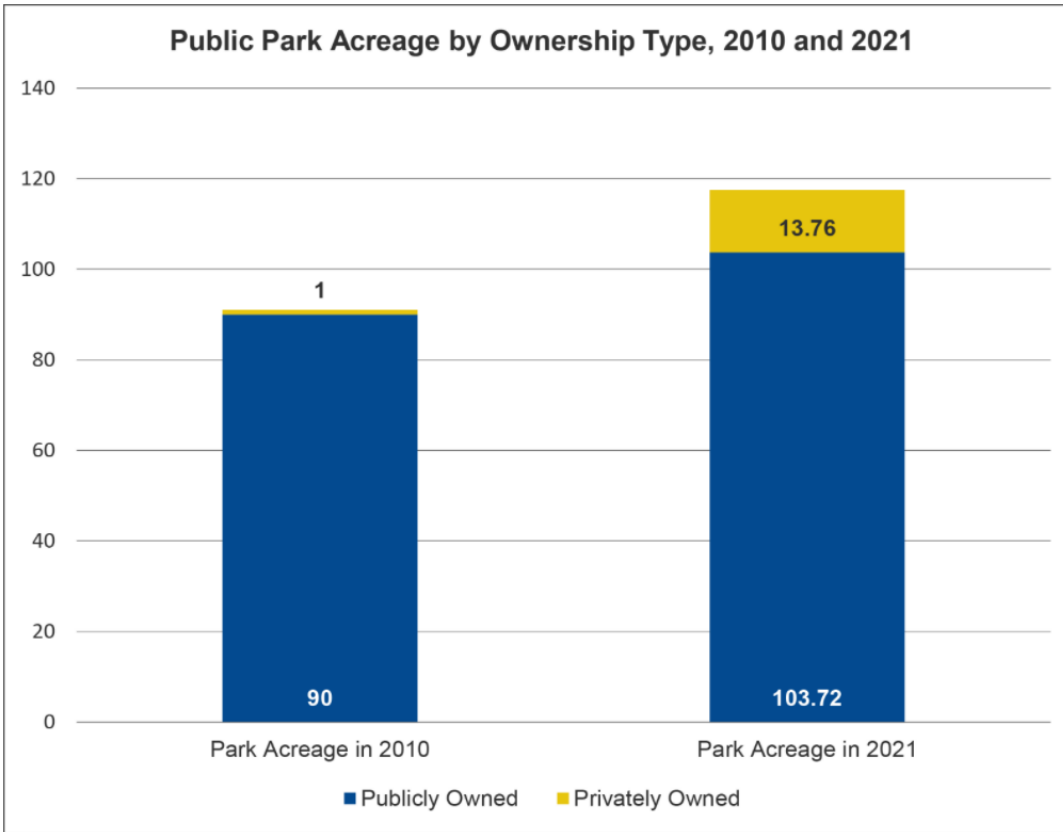
In 2009, publicly owned or accessible park land in Tysons totaled 91 acres, with 8.5 acres of park space committed via proffers.

The major applications approved since 2010 collectively provide commitments for 93.48 acres of new, permanent, publicly owned or accessible urban park space in Tysons.

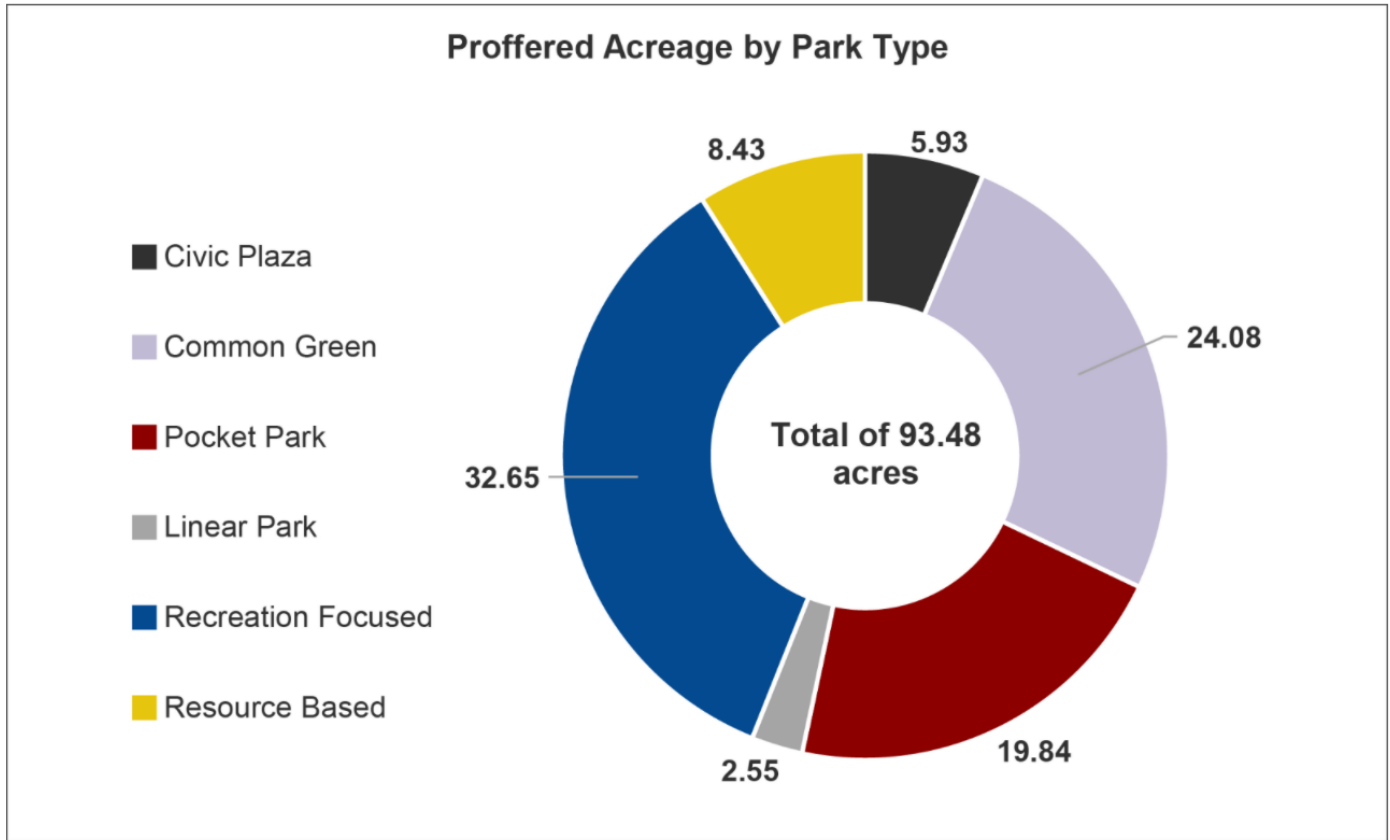
The interactive map illustrates proffered and delivered park spaces, unbuilt proffered park spaces, and existing County-owned parks. The park classification type is included when a park space is selected.

The bar graph shows park ownership and the pie chart





Public Park Acreage by Ownership Type, 2010 and 2021



Proffered Public Park Acreage, 2010-2021



New Park Spaces Opened to the Public

The Perch – Capital One's 1.5-acre sky park opened to the public in July 2021. Located ten stories above Wegmans and Capital One Hall, this new public park space includes a multi-purpose lawn, decorative landscape plantings, seating options, a bocce court, ping pong tables, and a small, fenced dog park.



The Perch – Capital One’s 1.5-acre sky park opened to the public in July 2021. Located ten stories above Wegmans and Capital One Hall, this new public park space includes a multi-purpose lawn, decorative landscape plantings, seating options, a bocce court, ping pong tables, and a small, fenced dog park.



The Bexley

This one-third acre urban park, constructed with The Bexley at the Highland District, includes native landscaping, bioretention areas, an open lawn area, and bench seating. Other key features include a trellis and a treed promenade. The park is adjacent to Scott’s Run Stream Valley and was designed with plants native to Fairfax County to protect the ecology of the stream valley parkland.



Source: Fairfax County

The Mile

The half-acre off-leash dog park located previously on Maitland Street has been relocated one block to the north, at the intersection of Blyton and Hornby Streets. The new dog park includes shade trees, expanded seating, synthetic turf, and a water fountain for dogs and their people. The improved dog park is part of a larger two-acre community park at The Mile that will feature a flexible lawn area, interactive fountain or splash pad, pickle-ball courts, bocce court, seating areas, and walkways. Completion of the remainder of the park is expected with construction of The Mile’s Building G, located north of the Highgate building.

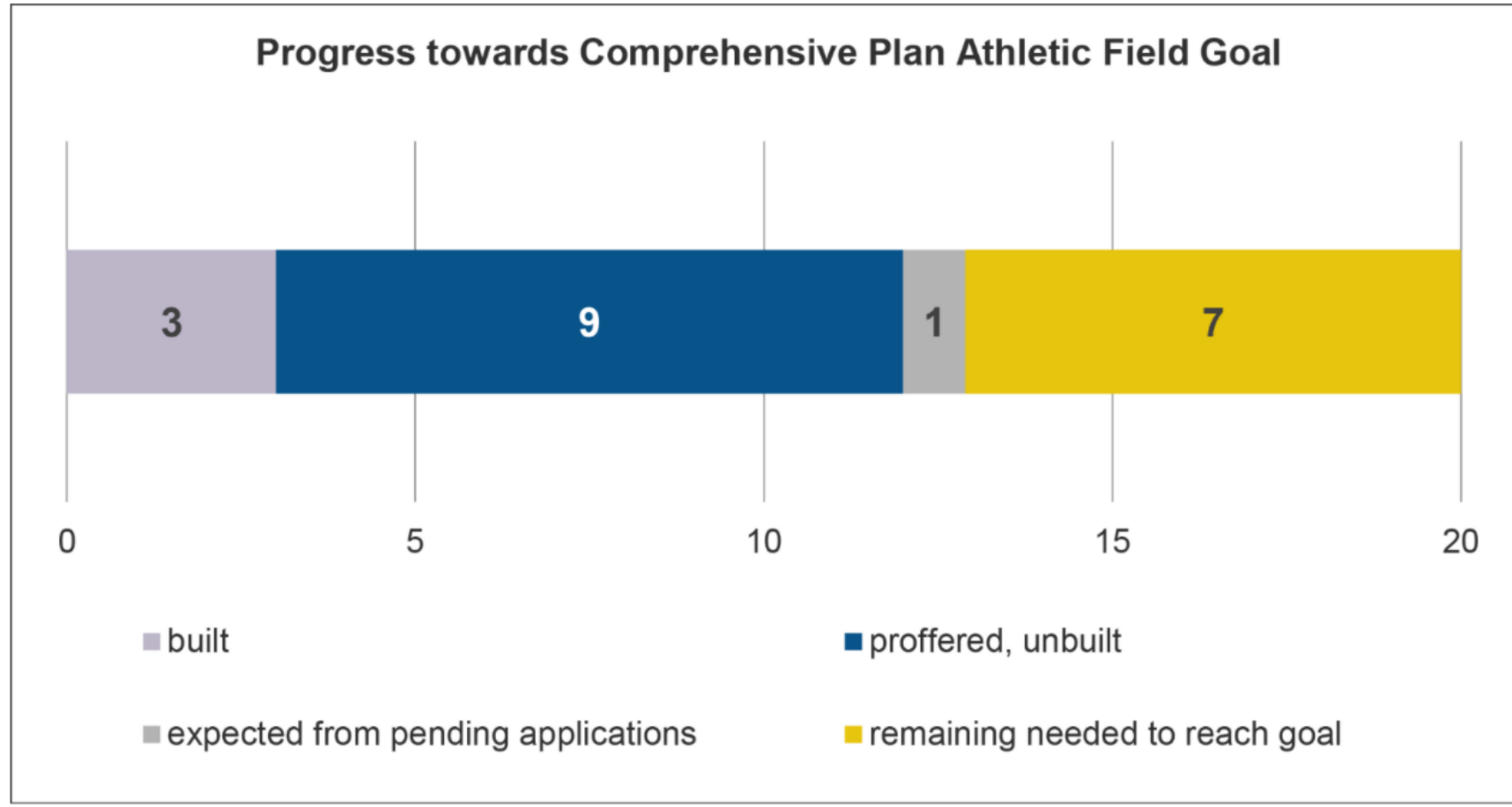


Source: Fairfax County

Athletic Fields

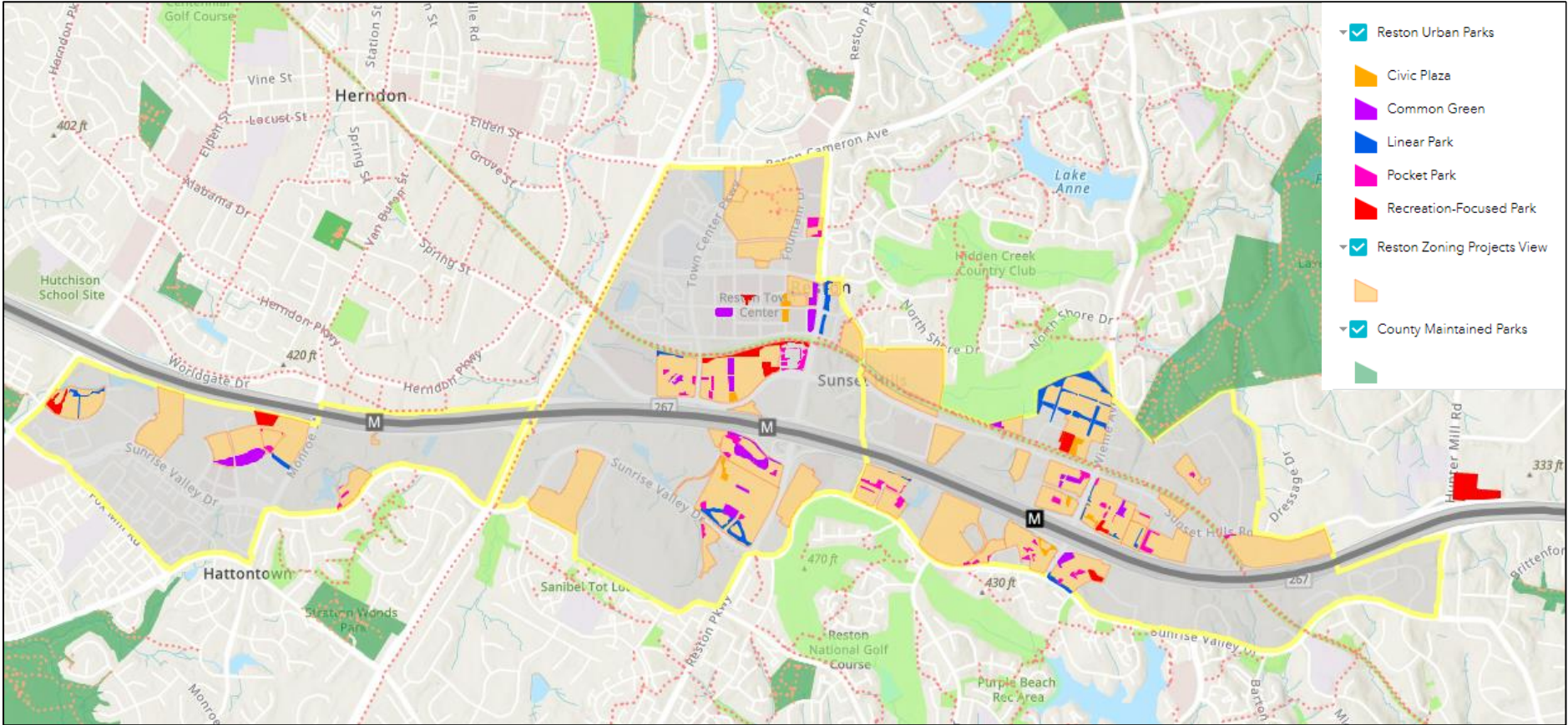
The first bar graph provides information on the progress towards meeting the Comprehensive Plan goal to provide 20 athletic fields.

Note: An interim half-size field at Jones Branch is counted, but will be removed upon construction of a new elementary school



Proffered Urban Parks in the Reston TSA

- 58.6 acres proffered since 2014
- 12.6 acres delivered since 2014 in 21 park spaces
- No additional acres proffered in 2021



Significant Athletic Field Commitments in Reston

- Rectangle field and warm up area proffered at Isaac Newton Square
- 7 acres on Hunter Mill Road dedicated to FCPA
- Tee-ball/Whiffle Ball diamond built at Woodland Park
- **\$27.8 million total** proffered for new fields and existing field upgrades in Reston area



Planned athletic field at Isaac Newton Square

Introducing the (Award-winning!) Reston Data Hub



<https://storymaps.arcgis.com/collections/a1272e162cf142c3b8bac853e449a48e?item=1><https://storymaps.arcgis.com/collections/a1272e162cf142c3b8bac853e449a48e?item=1.com>

Parks and Recreation in the Reston Transit Station Areas

Parks and Recreation in the Reston Transit Station Areas

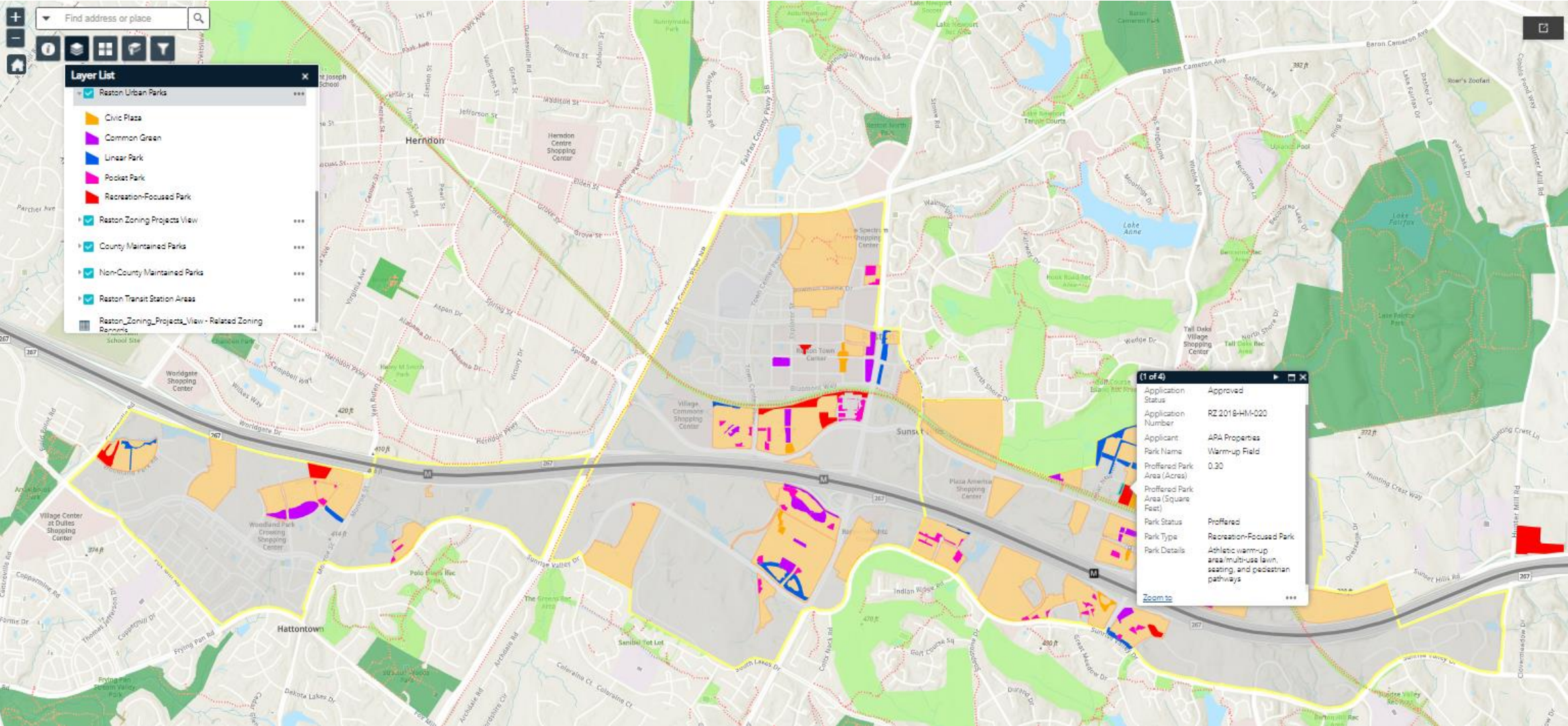
The Comprehensive Plan's vision for Reston includes the preservation of natural areas and integration of open spaces throughout the community. As growth occurs in Reston, especially along the transit-oriented Transit Station Area (TSA) corridor, the Plan requires additional publicly accessible parks, recreation, and cultural facilities beyond those park and open space areas established in the original Reston Master Plan. This will be accomplished through developer contributions towards and/or provision of new publicly accessible urban park spaces and recreational facilities. These new parks and facilities will be constructed and opened to the public with each new building that is built in the Reston TSA to address increased needs generated by new residents and workers.

Urban Park Spaces in the Reston Transit Station Area.



Source: FCPA file photographs

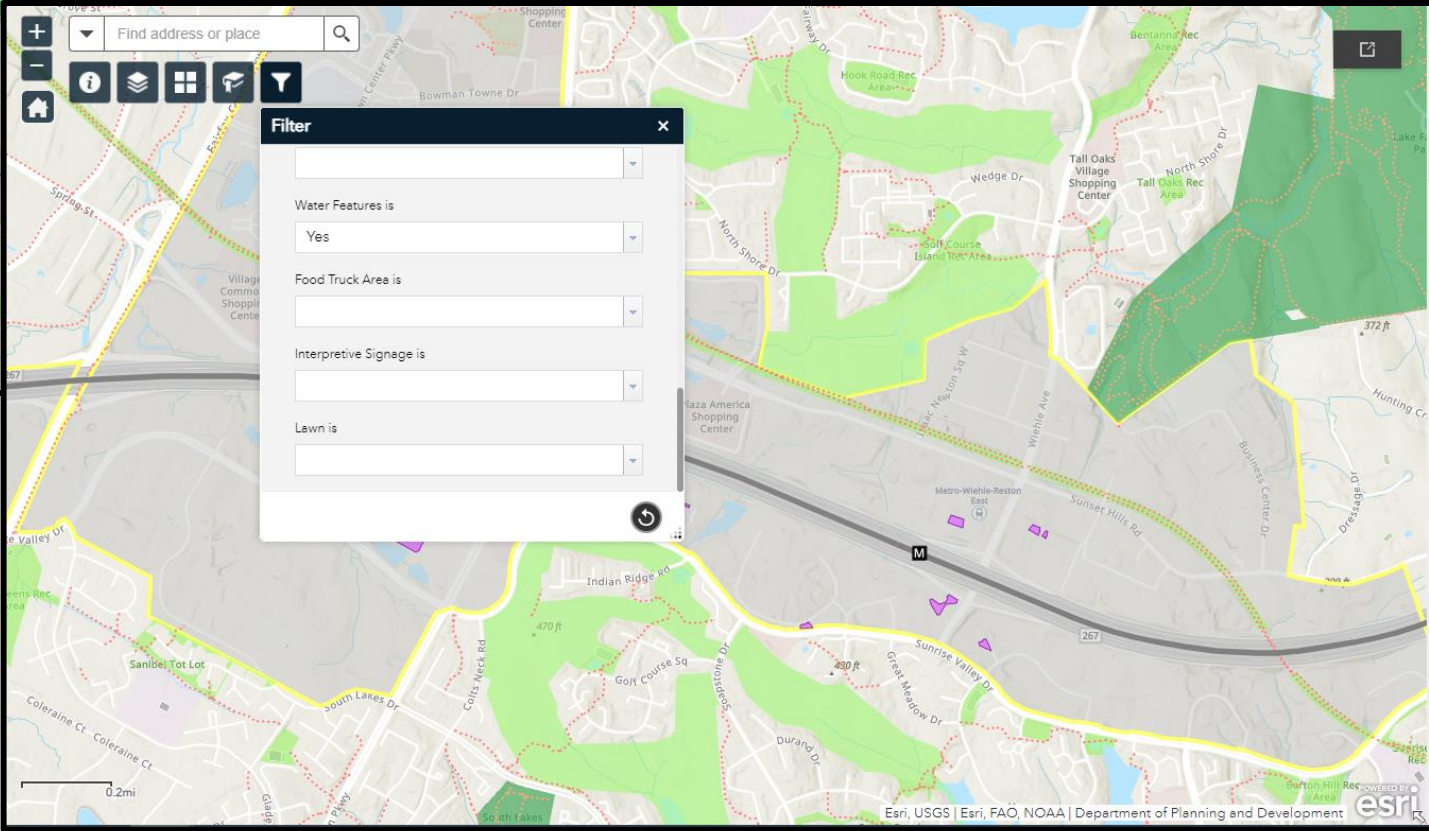
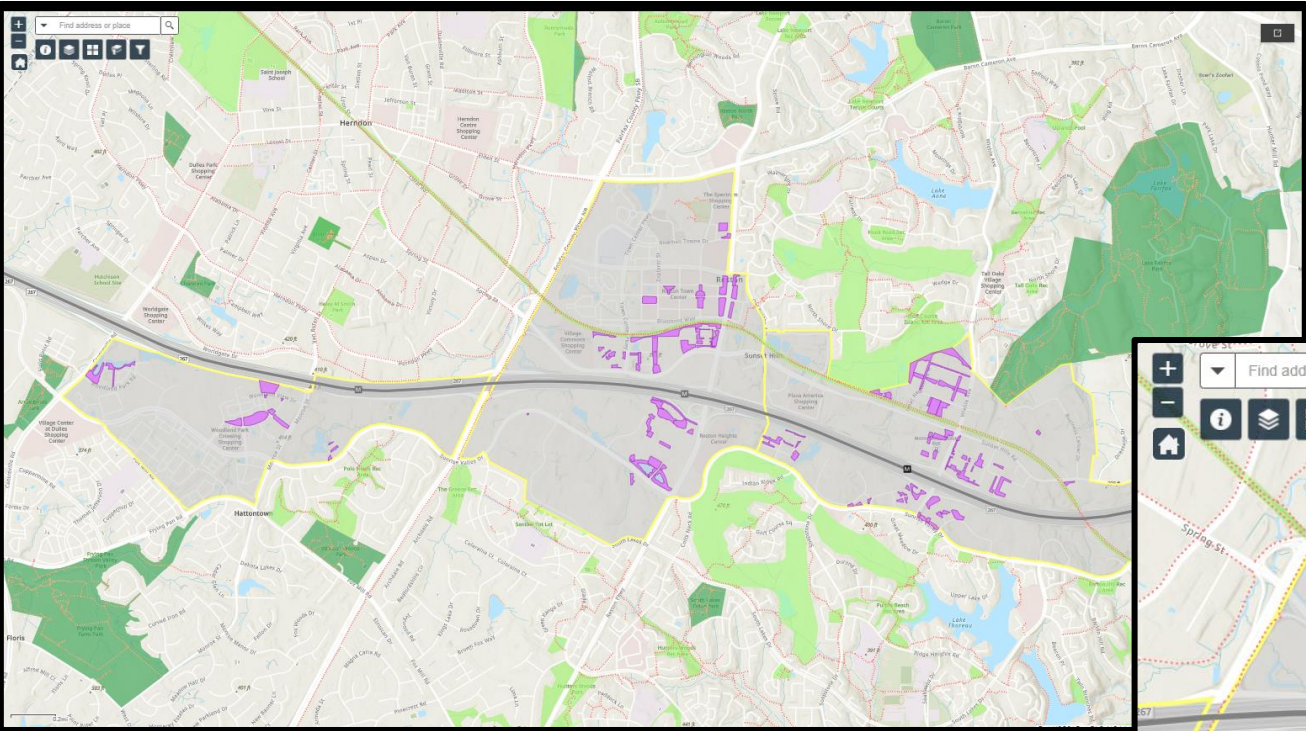
Urban Parks Framework – Service Level Standards



Proffered Recreational Facilities



Filtering Urban Parks by Facility Type



Questions?

Board Agenda Item
January 12, 2022

ACTION

Clemyjontri Park Master Plan Revision – Alternative Option for Phase III Development (Dranesville District)

ISSUE:

Approval of Clemyjontri Park Master Plan Revision

RECOMMENDATION:

The Park Authority Executive Director recommends approval of the Clemyjontri Park Master Plan Revision.

TIMING:

Board approval of the master plan revision is requested on January 12, 2022.

BACKGROUND:

As part of the Planning & Development Division's approved workplan, staff have prepared a draft master plan revision for Clemyjontri Park in the Dranesville Supervisory District.

The original master plan was approved in 2002 and envisioned development of the park in three phases. The first two phases have been developed and included a large playground, primary parking lot, secondary parking lot, storm water management facilities, and perimeter trails. The third phase included preservation of the existing homestead and surrounding gardens for ceremonies and social uses. As a revision to Phase III, Park Authority staff added an option of developing an arts center, or similar use, at Clemyjontri Park to further arts and educational opportunities. A facility such as this could provide a creative space for the community that is integrated into, yet distinct from, Clemyjontri Park. The proposed project would feature reuse and redevelopment of the existing residence on the property, as well as new construction for galleries, studio, and classroom spaces. No changes to the park's playground or other recreational amenities are planned. Park Authority Policies 107 and 110 support partnerships and the provision of public art in parks.

Staff held a public kickoff meeting in December of 2020 and introduced the planning process, project schedule, and concepts for a potential arts center. Following a public comment period of 30 days, staff refined the master plan revision, and created a draft

Board Agenda Item
January 12, 2022

master plan revision document (Attachment 1). The draft master plan revision added an “option 2” for the undeveloped phase III area of the park via the appendix found at the end of the document. The option introduced an alternative concept for a potential arts center, or similar use, set within the existing park in a manner that preserves the goals of the original master plan, integrating art within the park.

An in person public comment meeting occurred on October 28, 2021, in which Park Authority staff shared a summary of the draft report and concept development plan (CDP) with the public. The meeting was followed by a 30-day public comment period. All final comments were considered, and a revised draft master plan was published. Revisions to the draft report included simplifying the building envelope zone in the phase III Concept Development Plan on page 31 to be more conceptual and the removal of a building concept sketch on page 30 that was premature for this level of planning. Additionally, written clarification was provided on page 30 regarding the final art center facility design and engineering specifics as they will be determined in subsequent public processes that will follow the approval of the master plan revision. The final draft of the master plan report (Attachment 1) is attached for consideration of approval by the Park Authority Board.

FISCAL IMPACT:

Master Planning and maintenance are typically funded by the General Fund, while park development is typically funded through park bonds. The construction of a new arts center, or similar use, and its surrounding infrastructure, are to be funded in a large capacity by a potential partnering organization, through donations or other fundraising efforts.

ENCLOSED DOCUMENTS:

Attachment 1: Clemyjontri Park Master Plan Revision

STAFF:

Jai Cole, Executive Director
Sara Baldwin, Deputy Director /COO
Aimee L. Vosper, Deputy Director/CBD
Stephanie Leedom, Director, Planning and Development Division (PDD)
Kurt Louis, Director, Park Operations Division
Cindy Walsh, Director, Park Services Division
Stephanie Cornejo, Park Planning Branch Manager (PDD)
Doug Tipsword, Project Manager, Park Planning Branch, (PDD)
Adam Wynn, Senior Planner, Park Planning Branch, (PDD)

CLEMYJONTRI PARK



GENERAL MANAGEMENT PLAN

AND CONCEPTUAL DEVELOPMENT PLAN

FAIRFAX COUNTY, VIRGINIA



APPROVED 1/16/02

REVISED XXX/2022

ACKNOWLEDGEMENTS

MASTER PLAN—APPROVED (01/16/2002)

PARK AUTHORITY BOARD

Frank A. de la Fe -- Chairman, At-Large
Gilbert S. McCutcheon -- Vice Chairman, Mt. Vernon District
Winifred S. Shapiro -- Secretary-Treasurer, Braddock District
Toa Quang Do -- At-Large
Kenneth G. Feng -- Springfield District
Jennifer E. Heinz -- At-Large
Harold Henderson -- Lee District
Gwendolyn L. Minton -- Hunter Mill District
Joanne E. Malone -- Providence District
Harold L. Strickland -- Sully District
Richard C. Thoesen -- Dranesville District
Thomas B. White, Jr. -- Mason District

SENIOR STAFF

Paul L. Baldino -- Director
Michael A. Kane -- Deputy Director
Cindy Messinger -- Director, Park Services Division
Miriam C. Morrison -- Director, Administration Division
Lee D. Stephenson -- Director, Resource Management Division
Lynn S. Tadlock -- Director, Planning & Development Division
Timothy K. White -- Director, Park Operations Division

PROJECT TEAM

Todd Bolton -- Resource Management Division
Mark Rogers -- Park Operations Division
Richard Sacchi -- Resource Management Division
Charlie Bittenbring -- Park Services Division
Mark Holsteen -- Planning & Development Division
Joseph Sicenavage -- Planning & Development Division
Kelly Davis -- Planning & Development Division

Task Force Members

Jan Perriello	Martha Glennan
Edward Bjorn	John Adams
Judith Hoffman	Carol Gideon
Adrienne Whyte	Jane Delange
Edwin Kuhn, Jr.	Rodney Crawford
Martha Williams	Kent Maxfield
Patrick Keogh	

MASTER PLAN REVISION —APPROVED (DATE HERE)

PARK AUTHORITY BOARD

William G. Bouie, Chair, Hunter Mill District
Ken Quincy, Vice Chair, Providence District
Michael W. Thompson, Jr., Secretary, Springfield District
Timothy B. Hackman, Treasurer, Dranesville District
Maggie Godbold, Sully District
Linwood Gorham, Mount Vernon District
Ronald Kendall, Mason District
Kiel Stone, Braddock District
James P. Zook, At-Large
Dr. Abena Aidoo, At-Large
Dr. Cynthia Jacobs Carter, At-Large
Faisal Khan, At-Large

SENIOR STAFF

Jai Cole, Executive Director
Sara Baldwin, Deputy Director/Chief Operating Officer
Aimee Vosper, Deputy Director / Chief of Business Development
Michael Peter, Director, Business Administration
Stephanie Leedom, Director, Planning & Development Division (PDD)
Kurt Louis, Director, Park Operations Division (POD)
Cindy Walsh, Director, Park Services Division (PSD)
Judith Pedersen, Public Information Officer (PIO)

PROJECT TEAM

Anna Bentley, Former Planning Branch Manager, PDD
Ryan Stewart, Former Chief, Long Range Planning, PDD
Doug Tipsword, Project Manager, Planning Branch, PDD
Heather Lynch, Project Manager, Development Branch, PDD
Chris Goldbecker, Parks & Recreation Specialist, PSD
David Buchta, Park Management Specialist, RMD
John Burke, Natural Resources Branch Manager, RMD
Dave Lawlor, Ecologist, RMD
Mark Plourde, West Region Manager, POD
Olivier Anquetil, Area 1 Manager, POD

NOTE: SEE PAGE 6 AND PAGE 29 OF THE APPENDIX FOR MORE INFORMATION.

ACKNOWLEDGEMENTS

PREPARED BY

G. E. Fielder & Associates, Chartered
Planners, Engineers, Landscape Architects
Grace E. Fielder, RLA, ASLA, AICP, CPSI
President
14201 Laurel Park Dr., Suite 105
Laurel, Maryland 20702
301-470-2544

TABLE OF CONTENTS

Acknowledgements

List of Maps and Charts.....5

Executive Summary.....6

A. Purpose of a Master Plan Revision..... 6 (Revised 01/xx/2022)

B. Creation of the Park6

C. Document Format and Planning Process.....6

D. Recommendation Highlights7

General Management Plan.....7

I. Introduction.....7

A. Purpose and Description of the Plan.....7

B. Historical Setting8

C. Regional Setting9

II. Site Description and Analysis10

A. Existing Conditions10

B. Utilities and Roadways11

C. Vegetation.....11

D. Views, Vistas and Lands Uses13

E. Site Hydrology.....13

F. Soils, Slopes and Site Geology13

G. Opportunities and Constraints.....14

H. Purpose and Significance of the Park.....16

I. Needs Assessment.....16

III. Management FrameWork16

A. Entrance Zone or Transportation Corridor Zone18

B. Historic Overlay Zone18

C. Recreation Zone.....18

D. Resources Protection Zones.....18

E. House and Garden Zone19 (Revised 01/xx/2022)

Conceptual Development Plan20

I. Introduction and Background.....20

II. Description of the Conceptual Development Plan Elements20

A. Phase I Elements.....20

1. Entrance Road, Parking and Access to Private Residence.....20

2. Playground Facilities.....22

3. Stormwater Management.....22

4. Perimeter Setbacks and Screening.....22

5. Quality of Life Issues23

B. Phase II Elements23

1. Parking Area.....23

2. Large Barn.....23

3. Perimeter Trail23

4. Stormwater Management.....23

C. Phase III Elements (Option 1)..... 23 (Revised 01/xx/2022)

1. House and Gardens.....23

2. Garage an Private Parking Area.....24

III. Management Considerations.....24

LISTS OF MAPS AND CHARTS

MAPS

Regional Setting 9
Existing Conditions 10
Vegetation12
Views, Vistas, Land Uses, and Site Access 13
Opportunities and Constraints..... 15
Management Framework 17
Conceptual Development Plan21

CHARTS

Chart 1-Preliminary Flora and Fauna Lists 24 (Revised 01/xx/2022)

APPENDIX

Views, Vistas, Land Uses, and Site Access 25
Site Hydrology 26
Soils, Slopes and Sites Geology 27
Utilities and Roadways 28
Phase III Elements (Option 2)29 (Revised 01/xx/2022)

EXECUTIVE SUMMARY

A. Purpose of a Master Plan Revision

The purpose of a Park Master Plan is to create a long-range vision for a park by determining the best uses, facilities, and resource management strategies for a specific site. During the planning process, the park is evaluated in the context of the surrounding community and within the FCPA system as a whole. The approved master plan serves as a decision-making guide to be consulted before the initiation of any detailed site planning, design, construction, resource management activities, or site programming. Purposefully, master plans are general in nature, which allows flexibility to accommodate changing park user needs, as well as evolving best management practices. Park master plans are updated as necessary to reflect changing community interests over time.

The following master plan, approved in 2002, envisioned development of the park in three phases; the first two phases, included the large playground, primary parking lot, secondary parking lot, storm water management facilities, and perimeter trails, have been completed. The third phase included preservation of the existing homestead and surrounding gardens for various ceremonies and social uses. In the text that follows, this original concept is identified as Option 1 (See pages 19 and 23).

This master plan revision incorporates an additional park development concept for Phase III. The concept option shows a revised House and Gardens Zone while maintaining the intent and original goals of the approved master plan. Additionally, the concept option is planned to complement the existing features constructed in Phases I and II. The Park Authority envisions a new community-serving facility and supporting amenities to provide residents with fine arts, cultural activities, education, or similar opportunities. This alternative concept is identified as Option 2 and is detailed further in the Appendix section of this revised master plan document. (See pages 29 –31).

B. Creation of the Park

The name, CLEMYJONTRI, for the new 18.55 acre park is based on a combination of the names of the donor's four children - Carolyn (Cl), Emily (emy),

John (jon) and Petrina (tri). Mrs. Adele Lebowitz donated her land in March 2000 to the Fairfax County Park Authority with the following restrictions: the land is to be a park in perpetuity; a large barrier-free, (handicapped-accessible) playground will be installed along with a carousel and a picnic pavilion, but no athletic fields; a life estate will be given to Mrs. Lebowitz; construction must commence within five years; and the property will be known as CLEMYJONTRI Park. The complete details of the Agreement for Charitable Transfer can be found in the offices of the Fairfax County Park Authority.

The property is located in the extreme east portion of the Balls Hill Community Planning Sector, bounded on the north by Georgetown Pike (Rt. 193) and on the south by Dolley Madison Boulevard (Rt. 123). To the immediate east and west are single-family subdivisions.

C. Document Format and Planning Process

This document is a combined General Management Plan and Conceptual Development Plan, written to the specifications used by the Fairfax County Park Authority for park planning and development, as revised in 1994. It is a product of the firm of G. E.



CLEMYJONTRI PARK

Fielder & Associates, Chartered with assistance and guidance from the Fairfax County Park Authority staff and amended by the task force.

The planning process began in November 2000 with a site visit and introductory meeting with Mrs. Lebowitz. Shortly thereafter, a Forest Stand Delineation and Natural Resources Inventory were prepared to supply the planning team with important base information. (These documents are available under separate cover.) Site analysis maps and design concepts were prepared, refined and reviewed with the Fairfax County Park Authority staff. Public input was obtained during a public hearing in spring 2001 and from a task force comprised of neighborhood and community representatives.

D. Recommendation Highlights

The main recreation element of this special purpose park is a large barrier-free playground, one acre in size. The playground will be surrounded by shaded seating areas. In the center of the play area will be a handicapped-accessible carousel. Other supplemental facilities will include a picnic shelter, a perimeter trail, parking and a

restroom. Landscaping will be an important element throughout in order to maintain compatibility with the attractive gardens surrounding the main residence. Later phases of development could include use of the residence and gardens for community, public or private events, such as meetings and weddings. The house may be used in part as a rental property for Fairfax County Park Authority staff or the site manager. Additional parking and landscape screening also will be provided.

GENERAL MANAGEMENT PLAN

I. INTRODUCTION

A. Purpose and Description of the Plan

The purpose of the General Management Plan (GMP) is to provide basic background information on the park and to establish a framework for guiding future development. It contains maps and text, which together describe the existing conditions found on the site including: Utilities and Roadways, Vegetation, Hydrology, Soils, Slopes and Geology, and Cultural



CLEMYJONTRI PARK

Resources. From this information, opportunities and constraints are determined. Use zones are then delineated to indicate a preferred management and use potential for each area. These zones are general and somewhat flexible. Other background information is compiled in order to provide a complete picture of the site and its potential. This includes the regional setting and demographic data, with careful attention being given to deed restrictions and conditions.

B. Historical Setting

Human habitation in the environs near CLEMYJONTRI Park may go back as far as 10,000 years B.C. or more, but modern history may be said to have begun with the arrival of English traders and settlers on Virginia's Northern Neck in the mid-16th century. Europeans and Native Americans, Algonquin Indians of three tribes - the Dogues, Anacostins and Piscataways - lived in an uneasy coexistence in what is now Fairfax County. By the century's end, however, much of the lands of the Northern Neck had been patented, and most of the Indians had been relegated to the remote headwaters of the Potomac.

Preliminary deed research was undertaken in an effort to learn some of the history of the property. Although the information gathered to date has several gaps, it is known that a man by the name of Thomas Lee received a patent on the lands encompassing CLEMYJONTRI from Catherine, Lady Fairfax, on August 4, 1719, totaling 2,864 acres. The tract stretched along the Potomac and included considerable riverine shoreline. Once part of the great virgin forest stretching from the Piedmont to beyond the Blue Ridge, its trees were felled and an agrarian culture was adopted, much like what is being interpreted today on the Claude Moore Colonial Farm. This farm, located just across Route 193 from CLEMYJONTRI, was also part of the original patent.

The patent, or a portion of the patent and the improvements thereon, have been associated with the tract or tracts known as "Salona". Salona figured prominently in the history of The War of 1812, when the British advanced into Washington, D.C., burned the White House and forced

President and Dolley Madison to flee and seek refuge in a mansion at Salona on August 24, 1814. Portions of the original patent were subdivided, and in 1843, Chapman Lee sold a 52-acre portion of the estate to Henry C. Taylor. The deed reads in part: " being the East part of the Salona farm formerly called Langley and on a tract granted to Thomas Lee by patent in the year One Thousand Seven hundred and nineteen."

This 52-acre tract was subsequently known as "the Beeches". Records are somewhat unclear during the pre and post Civil War era however; the CLEMYJONTRI site could have had some significance. It is possible that a house was built somewhere on the property in 1846-47 as records show a substantial increase in property taxes at this time. Civil war breast works were reported to have existed in the fields and although they were plowed under, there may be remains of encampment and other artifact concentrations.

"The Beeches" passed from landowner to landowner in its 52-acre form until the 1960's. At this time, creation of Dolley Madison Boulevard bisected the property; the southern remnant, 31.8 acres, was sold in 1977 and eventually became the Evermay subdivision. An old sign, "Beeches Nursery," still visible on the large barn, reflects the property's former name. The sale of the southernmost tract left CLEMYJONTRI in its current configuration, an 18.55-acre tract including its 1912 home and other improvements, bracketed



CLEMYJONTRI PARK

driveway entrance into the site from Dolley Madison Boulevard. There is another three rail wood fence across the front of the main residence. It encloses the surrounding garden and runs from the western side of the garage to the scrubby wooded boundary around the tennis court. A deteriorating fence line continues across the front edge of the tennis area, bends around to the north and extends across the back of the tennis court, where it terminates. The front of the driveway from Georgetown Pike is lined with majestic specimen trees and old red cedars.

B. Utilities and Roadways (appendix, page 28)

The CLEMYJONTRI property lies between two major traffic corridors: Georgetown Pike a two-lane road to the north and Dolley Madison Boulevard a four-lane divided highway to the south. To the east of the site is a semicircular road in the Evermay subdivision called Dunaway Court, which terminates at the property line near the northeast corner of the side and again near the southeast corner as a service drive. Both stub streets facilitate access to the Falls Church water and sewer utilities on the east side of the property. To the west of the site, public utilities are not readily available, because water and sewer utilities are located at least 200 feet from the property line and accessing them would necessitate acquisition of easements from private landowners. There is, however, an existing well on the site, approximately 30 feet to the north of the main residence. The site's septic field is located at the southwest corner of the property, southeast of the original septic field location.

With regard to electrical service, a utility easement with overhead lines runs along the length of the western property line and connects to overhead lines at both Georgetown Pike and Dolley Madison Boulevard. There are three poles within the CLEMYJONTRI site (see plan). There are no overhead power lines along the east side of the site.

C. Vegetation (map, page 12)

Open fields, wooded areas and large stands of bamboo can be seen onsite. Mature hardwoods and extensive vines dominate the wooded areas. On the

drier parts of the site, locust, cedar, elms, pine and oak occur. A large hardwood stand near the northeast corner of the property, in an area of depressions and uneven ground, supports primarily sweetgums, oaks, sugar maples, and aggressive invasives such as multiflora rose, vinca minor and honeysuckle vine. This area is bordered by thickets of grasses, woodland edge herbaceous plants, and low-growing bamboo. Another wooded tract can be found near the southwest corner of the property. This seasonally wet area is dominated by multiflora rose bordered to the west by hardwoods such as maples and persimmons, with an understory of hackberry, boxelder and black cherry. Slippery elm and river birch occur here as well. In addition, the wooded areas bordering the property are dominated by maple, oak, ash, locust, cedar and native pine.

Stands of mature bamboo occur primarily on the south side of the site, and there is also an impressive stand to the northeast along the property line. At least three different varieties are represented.

Specimen trees around the residence and front drive include two sycamores (36" and 38" DBH), a sizeable pin oak (38" DBH), an American holly and several large maples and cedars. The most outstanding specimen tree onsite is a gnarled red cedar in a clearing near the tennis court. Several other specimens, likely surplus from Beeches Nursery, include a grouping of China firs, ginkgos, evergreen and saucer magnolias and cryptomerias. Along the western edge of the site are two large black locusts. Highlighting the vast open field at the front of the property is a stately 59" DBH white oak.



China Fir

CLEMYJONTRI PARK

Watershed to the north, though both watersheds feed into the Potomac River to the north. There is a depression, possibly 10 feet in width, in front of a small bamboo stand to the southeast of the barn and shed area. In January, this depression was filled with water to a depth of about 2 feet. There are two naturally occurring seasonally wet areas on the site, one near the northeast and one near the southwest corner, into which the site drains. A third seasonally wet area occurs at the east side of the main drive off Georgetown Pike and is noted as the lowest elevation point onsite. The tendency to collect and retain surface water here is partly due to a clogged culvert pipe that releases storm water at this location. Another storm drain is evident 285 feet to the west of the main drive, beneath Georgetown Pike.

F. Soils, Slopes and Site Geology (appendix, page 27)

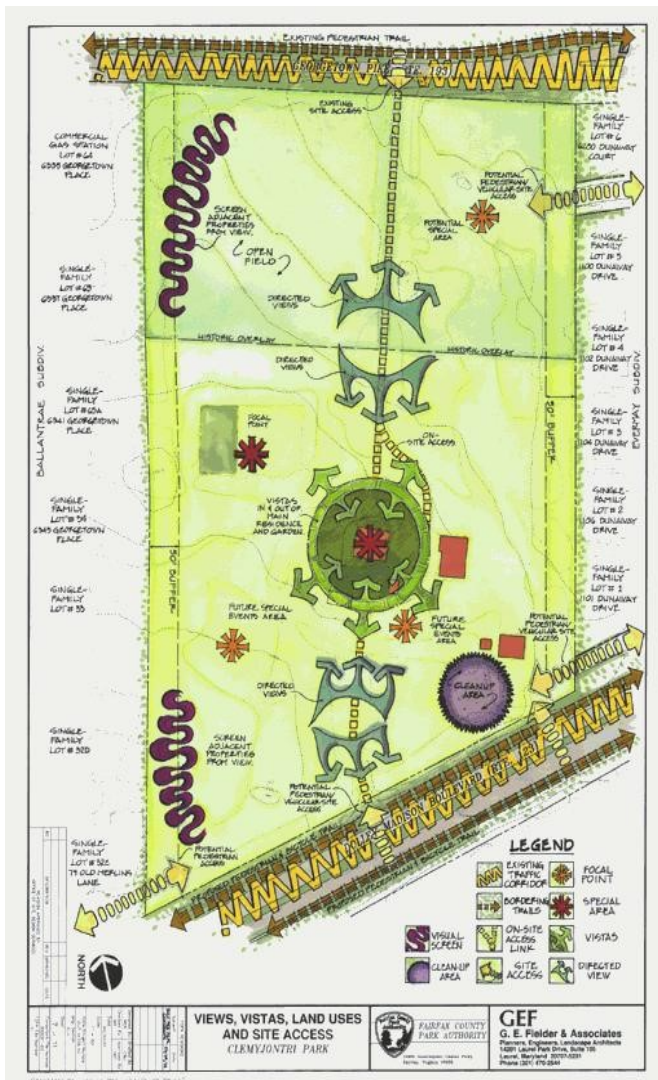
Three distinct geologic regions occur in Fairfax County. Located in the Piedmont Upland Province of the county, the geologic composition of the CLEMYJONTRI site is of metamorphic rock, predominantly schist, granite, gneiss and greenstone (information obtained from General Ratings for Urban Development, Fairfax County, March 1999).

Three types of soils can be found on the property: Glenville, Meadowville and Glenelg. Meadowville soils have similar characteristics. Both are characterized by a seasonal high water table and a depth to bedrock of 10 to 100 feet. In addition, both soil types are derived from schists, granites and alluvium. The main difference between the Glenville and Meadowville soils is that Glenville soils are the least suited for building foundations and septic fields, as the water table is closest to the surface. Meadowville soils occur in pockets on the site, beside or within seasonally wet low-lying areas.

The third soil type, Glenelg, typically occurs on hilltops and side slopes. This is a more permeable soil, as the depth to the water table is substantially greater than that of the two bottomland soils. Glenelg soils are generally underlaid by micaceous schists, with a depth to bedrock of 5 to 100 feet. Because of its high mica content, this soil can be difficult to compact. Glenelg soils are suited for building foundation support and septic drainage fields. Nearly half of the site is composed of Glenelg soils, located around the two highpoints of the site along the ridgeline between the main residence and the tennis court.

This soil information was derived from the regional data available. As site development progresses, soil test borings will be needed to more accurately determine where the best soils for construction are located.

The site is, for the most part, gently sloping in both directions from the ridgeline where the residence is located. The steepest areas on the site, at slopes



CLEMYJONTRI PARK

exceeding 7%, occur to the north and south, where the old and current driveway entrances were graded out. The most significant slopes are those near the main entrance and within the property line. The treed embankment adjacent to the east side of the driveway drops approximately 4.5 feet in a 10-foot distance onto the driveway bed, or at a slope of approximately 45%. The embankment on the west side has a less severe slope to the driveway bed, at roughly a 25% slope. From this point, as one reaches the low point near the outfall pipe to the east side of the driveway, the driveway bed is slightly raised above grade. Outside the property line, the transition slope from Georgetown Pike onto either side of the main entrance drive is less severe to the east.

G. Opportunities and Constraints (map, page 15)

To facilitate the conceptual design process, all existing conditions and site amenities were inventoried and considered. An overall analysis plan was then generated, which highlights the development potential and constraints of the site.

The potential for development of the CLEMYJONTRI property is quite good. Taking advantage of the natural character of the site, development envelopes enclose the major open spaces, while pleasant tracts of woodland and the tree-lined drive can be preserved. Areas occurring within the development envelopes have the greatest potential for use as play areas and parking. Limited accessibility to electrical power or water and sewer utilities is important to note because it can place restrictions on where small facilities such as storage and restroom pavilions can be sited. Site access, both vehicular and pedestrian, as well as natural vistas and directed views within the site, further determine where development zones can occur and how much development is possible within them.

There are several special site features noted. Views to and around the existing residence and garden feature prominently and set the stage for giving CLEMYJONTRI a bold sense of place. In the northeast corner of the site is a specimen tree area, adjacent to two site access points and development envelopes. Easy access and strong natural character

suggest that this area is ideal for such active and passive recreation as hiking, biking and picnicking. The large red cedar near the tennis court has a significant visual impact and should be maintained as a focal point in the landscape. Finally, to the rear of the residence, toward the western side of the property, a prominent open area is featured. As an outdoor room, it has great potential for such special occasions as private weddings and small outdoor gatherings.

Several obvious constraints to site development exist. CLEMYJONTRI Park fronts on the Georgetown Pike (Route 193), a circumstance that will affect the development and configuration of the park's entrance zone. Georgetown Pike has been listed in the National Register of Historic Places, a designation that triggers the obligations associated with such significant sites.

The Pike has also been declared a Virginia Scenic Byway, a recognized significance that carries its own restriction. Finally, the proximity of the historic Langley Forks crossroads to CLEMYJONTRI places a portion of the park within the boundaries of the Langley Forks Historic Overlay District. The District extends 400' from the Georgetown Pike entrance into the park. Therefore, development within the entrance zone must adhere to Historic District guidelines and receive approval of the Fairfax County Architectural Review Board. This will have implications on how public access to the park is developed. The alternative of using Dolley Madison Boulevard as access has even more severe restrictions. It is a divided highway with a median break already existing to the subdivision on the eastern property boundary. Another break across the median for CLEMYJONTRI would be too close. In addition, the traffic speeds in the area may be prohibitive.

There are also constraints related to the agreement with the property donor, Mrs. Lebowitz. These constraints, however, are clearly enumerated and should not pose many problems. The timeframe for development is short, given the county's fiscal restrictions and budget processes. The need to continue providing secure access to the residence is

CLEMYJONTRI PARK

a design and management issue, which will be addressed at a later stage in the process.

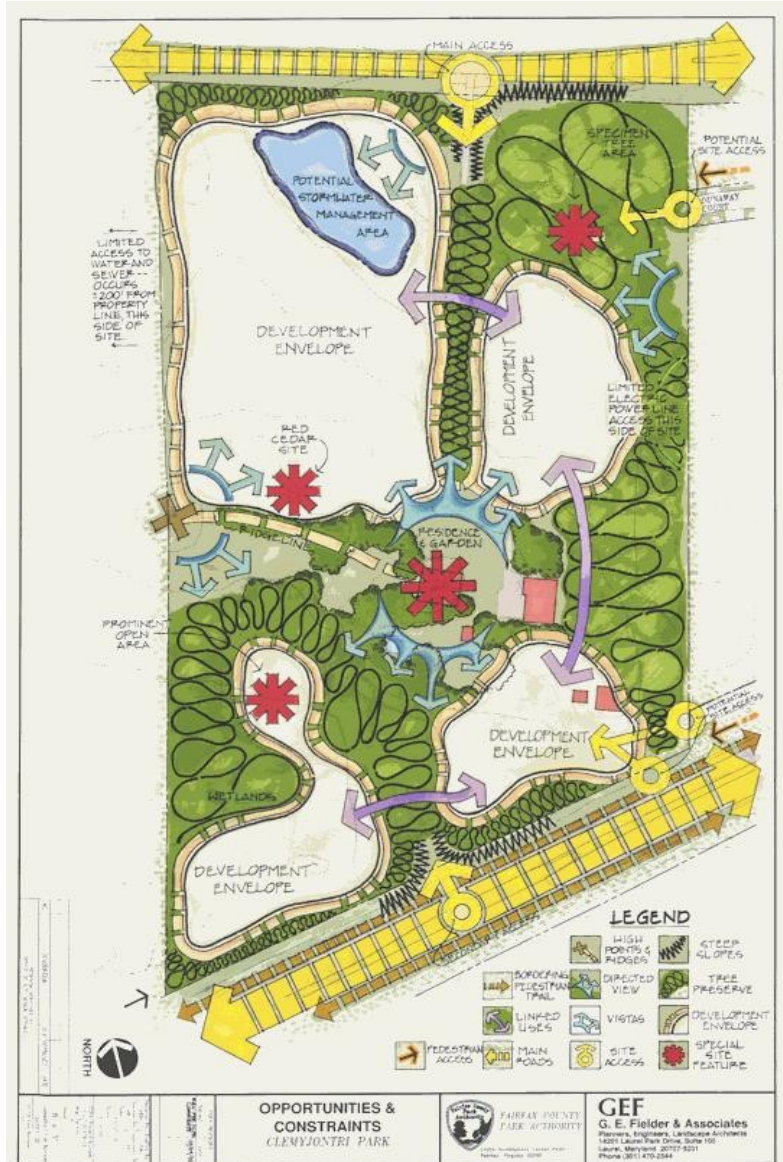
H. Purpose and Significance of the Park

Because of the nature of the generous gift from Mrs. Adele Lebowitz, the main purpose of the park was determined when the Fairfax County Park Authority Board voted to accept the terms of the Agreement for Charitable Transfer. The overriding purpose of the CLEMYJONTRI Park is to provide an accessible and barrier-free playground with a carousel and picnic shelter. No formal ballfields will be built. The terms of the agreement discuss a life estate for Mrs. Lebowitz including her house, gardens and nearby outbuildings. The park will be closed at dusk during the period of the life estate and beyond, except for rental property service functions. Security lighting maybe provided for evening functions. Work on the entrance road, playground, picnic shelter and carousel must have funding and all necessary approvals within five years of the agreement's signature.

The purpose of the park is to provide a comprehensive play experience for all children in a barrier-free setting, as well as to provide passive and pleasant outdoor experiences for all age groups. Of paramount significance is to create facilities to fill important needs for children who require an accessible setting and yet wish to interact with all children with or without handicaps. In addition, CLEMYJONTRI Park will provide an important and permanent parcel of very attractive open space in an increasingly crowded and developed portion of Fairfax County. When the third and final phase of the life estate is released, there will be opportunities for various community events and activities associated with the house and beautiful gardens.

I. Needs Assessment

Because of the unusual nature of the gift of land specifically for accessible play facilities, a full-blown needs assessment may not be applicable. However, it



is important to note that there is no other such playground at present in the entire county. Some playgrounds have ramps and other adjustments to improve access, but they are minimal at best. The nearest operational facility that meets most of the conditions of the gift is Hadley's Park, a playground in Potomac, Maryland. This facility is less than two years old and already it is proving to be successful beyond all expectations. The design of Hadley's Park enables children with a wide range of disabilities to play alongside children without disabilities in a broad mix of playground activities. Another playground of the Hadley's Park

CLEMYJONTRI PARK

style has just been constructed in Loudoun County, Virginia. Since Fairfax County has no such playgrounds, ample need can be inferred.

There is only one park with a playground within a 2-mile radius of the CLEMYJONTRI site. There are five elementary schools within this same radius with playgrounds. Undoubtedly, a state-of-the-art, accessible playground will attract many, many children, and because of its rarity, it can be expected that children will come by bus and car from some distance. There will certainly be extensive local use as well by neighborhood children. In addition, the other facilities that will ultimately be provided at CLEMYJONTRI Park will satisfy numerous community needs for pedestrian trails and picnicking facilities, as well as facilities for small private or public functions.

III. MANAGEMENT FRAMEWORK (map, page 17)

The Management Framework is a way of loosely dividing the property into different units or zones. The accompanying bubble diagram shows how CLEMYJONTRI has been zoned for appropriate uses. These zones will provide a framework for future decision-making. They are based on a thorough analysis of the site conditions and resources combined with the Fairfax County Park Authority needs and preferences and the requirements of the gift agreement. The description of each zone includes a list of "potential uses," which indicates acceptable future uses. The "potential uses" list is very general to allow maximum flexibility in future decision making efforts.

CLEMYJONTRI PARK

A. Entrance Zone or Transportation Corridor Zone

A long narrow corridor is designated as the vehicular entrance zone. It roughly follows the present entrance road from Georgetown Pike, and includes parking and drop-off areas plus access and future parking at the southern end of the park for the house and gardens. Eastbound Georgetown Pike traffic will require a deceleration lane and potential utility relocations. A deceleration/turning lane may be required for the westbound lane of Georgetown Pike with additional pavement widening for through traffic. The sight distances from the end of the present driveway appear adequate. Major access from Dolley Madison Boulevard is not considered a likely alternative because it is a four-lane divided road. As for the future parking potential from Dolley Madison Boulevard, consideration should be given to a special events and emergency access from Dolley Madison Boulevard via the stubbed off service road in the adjacent subdivision to the east (Dunaway Drive), such consideration was rejected by the Task Force. As required by the Agreement some differentiation will be needed between Mrs. Lebowitz's private access and the public access which will stop short of the residence, for the duration of the life estate.

The entrance zone should also include a possible pedestrian trail connection into the park from the existing countywide trail on the north side of Georgetown Pike. Given that there is a proposed bicycle trail on both sides of Dolley Madison Boulevard, access into and out of the park should be considered here as well.

POTENTIAL USES: Trails, roads, parking, utilities, fence and gate for separation of life estate.

B. Historic Overlay Zone

The Fairfax County Historic Overlay District includes 400-foot wide setback on properties fronting Georgetown Pike. The system is designed to regulate and protect against deterioration of the visual resources and historic character of the road corridor. Scrubby trees and vines provide a barrier from the park to Georgetown Pike at present, and there is at least one notable large oak tree in this

buffer. The remainder of the land within the setback is open field and entrance drive. It is likely that a storm water management facility would be needed for the site and this use is permissible within the overlay district.

POTENTIAL USES: Storm water management, open play area, tree planting, trails, informal picnicking and habitat enhancements, and cultural resource interpretation.

C. Recreation Zone

This large zone in the west central portion of the park is recommended for an accessible playground, carousel, and picnic pavilion as outlined in the gift agreement. Its location is mostly in open field, but it also includes the existing tennis court and surrounding scrubby vegetation. Specimen trees should be saved if at all possible and new planting should be added to provide shade for the play areas. Accessible restroom facilities must be considered in this core use area. Mrs. Lebowitz is interested in being able to see the playground from her house and this location provides a nice sight line without compromising her privacy. A second small Recreation Zone could be used for a group picnic shelter and a trailhead for a loop trail around the property. Its proximity to parking makes it well suited to some form of recreation use, and the trees here are scattered.

POTENTIAL USES: paths, trails, landscape planting, carousel, playground, picnic shelter, seating kiosks, restrooms, drop-off for cars and buses, trailhead.

D. Resources Protection Zones

There are two primary, non-contiguous resource protection zones shown on the accompanying map. One runs the length of the eastern edge of the park. It is long and narrow and at present contains scrubby woods, brambles, major stands of bamboo and other special ornamental trees remaining from the old plant nursery operation. The second area runs the length of the west edge of the park and makes a turn east along Dolley Madison Boulevard. Both areas border low-

CLEMYJONTRI PARK

density subdivisions and will be places where additional screen plantings will be needed. Storm Water Management issues may need to be addressed in this area. These resource protection zones are both in need of some interim management efforts aimed at landscape clean-up and vine removal. The remaining desirable plants, left over from nursery days, should be featured in some way, perhaps labeled and noted on a proposed perimeter trail.

Other issues in these areas include trash, old nursery pots, compost heaps, and an old shed, which could prove to be an attractive nuisance if not torn down and removed. Several areas are cratered where trees have been removed and re-grading should be investigated. Several low wet spots have been identified that should be avoided. The undisturbed field edges would be appropriate for wildlife amenities such as bluebird boxes, so long as they can be regularly maintained.

The east side of the park has more usable acreage, where a picnic grove might be located, extending somewhat into the adjacent historic overlay zone.

POTENTIAL USES: Informal picnicking, trail facilities, plant I.D., interpretive educational trails, wildlife habitat enhancements, and buffer planting.

E. House and Garden Zone

This zone will be a future use area to become available after the life estate is released. The house, immediate outbuildings, pool and gardens are all very well maintained. No detailed analysis is possible at this time, but should be incorporated in future phases. Archeological reconnaissance should be carried out in the immediate area around the house. Before public use is considered, There may well be evidence of an earlier house & out buildings. Uses to be considered include small scale and private and public functions such as weddings or conferences. Accessibility will be another issue to consider in planning for future uses. As soon as the gardens are turned over to the Fairfax County Park Authority, horticultural assistance will be needed to assure continued health of the plantings. An open area for a tent site or gazebo would be useful for

weddings and parties. The pool may be one feature that has to be removed, for public safety reasons.

The 10-room Lebowitz residence can become a rental facility for special events such as small wedding receptions, conferences, meetings and parties. The second floor may be used for offices, brides' dressing room, event support rooms, storage, etc. A permanent caretaker is recommended to police the grounds, answer the visitor questions, notify staff of problems on-site, etc. It is the preference of the Task Force that the house be used as a museum of local history.

POTENTIAL USES: Meeting space, outdoor/indoor weddings and receptions, special parking spaces, gazebo, special events, lawns and gardens.

NOTE: SEE APPENDIX PAGE 29 FOR MORE INFORMATION ON “PHASE III ELEMENTS (OPTION 2)”

CONCEPTUAL DEVELOPMENT PLAN

I. INTRODUCTION AND BACKGROUND

The purpose of this Conceptual Development Plan (CDP) is to expand upon the general and diagrammatic ideas for development that are found in the preceding text and maps that comprise the General Management Plan. The CDP provides an intermediate level of detail that will be followed by Project Implementation Plans. The CDP answers such questions as: what the purpose and function of each plan element is; how the proposed facilities

CLEMYJONTRI PARK

are to be located; and what design concerns must be addressed. A detailed concept plan map is a part of the CDP.

As concluded in the General Management Plan, the main purpose of CLEMYJONTRI Park is to provide an inviting and stimulating barrier-free playground, accompanied by a carousel and picnic shelter. Additional purposes for the park are to provide a variety of active and passive recreation opportunities for various age groups and a place for small private, community and public events in a garden setting.

CLEMYJONTRI Park is classified as a Special Purpose Park. This means that it will provide specialized equipment and facilities. However, the general atmosphere of the property will be minimally disturbed, and only those activities deemed compatible with the immediate area are being proposed.

A Task Force made up of neighbors and citizens was established in June 2001 to provide recommendations to the Park Authority Board for any changes or updates to the current proposed park master plan. The recommendations of the Task Force have been incorporated into this plan.

II. DESCRIPTION OF THE CONCEPTUAL DEVELOPMENT PLAN ELEMENTS (map, page 21)

The Lebowitz gift agreement specifies that the property be made available for park development in 3 phases. This phasing breaks the 18-acre property into 3 distinct sections. The first phase will occur on approximately 8 acres nearest Georgetown Pike where playground and ancillary facilities will be located. The second section includes 5.6 acres fronting Dolley Madison Boulevard with narrow buffers on the east and west sides adjacent to the subdivisions. The last part of the property available for development is the 5-acre portion subject to the life estate agreement, which is in the center of the whole tract. The accompanying concept plan drawing addresses the entire property, realizing that the only elements within the first part of the donation can be completely detailed at this time.

A. Phase I Elements

1. Entrance Road, Parking and Access to Private Residence

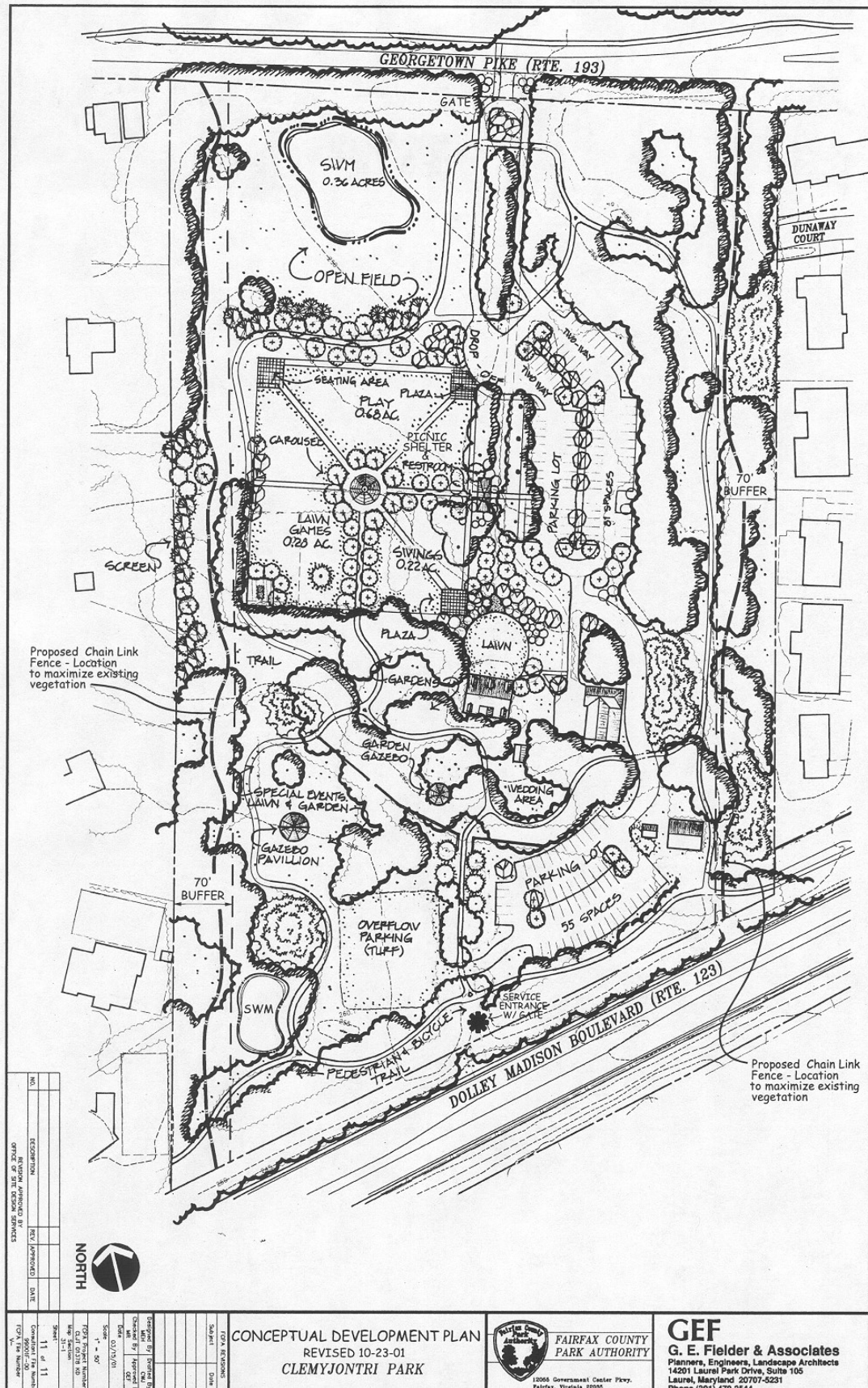
There will be only one public access into the park and it will be gated and in the immediate vicinity of the current entrance on Georgetown Pike. The entrance drive will be wide enough for emergency vehicles (30-foot wide at the property line). It will lead to an 80-car parking area and drop-off zone for vehicles whose passengers need to get close to the playground. At the end of the parking lot will be a fence and an electronic gate providing access into the fenced area that encircles the house.

Onsite parking is shown on the concept plan. Should residents experience overflow parking problems as verified by the County Police, the park will be restricted to 100 people until such time that the parking problem is resolved. Additionally, except under a special individual program approved by the Park Authority, only two traditional school buses will be allowed in the play area at one time and the buses will not be allowed to park with their engines idling. Handicapped accessible buses will be given priority and will be limited only to the extent necessary to protect the peace and harmony of the immediate neighborhoods.

2. Playground Facilities

The major focus of the plan is a large barrier-free playground with a carousel at its core. The carousel that would fit this site is a 28-foot American Classic, which is designed to accommodate the disabled. A shelter for the carousel will also be needed. The volume will be preset to a level that would, to the greatest extent possible, prevent sound from being heard beyond 25 feet from the edge of the carousel, but under no circumstance will carousel sound be heard at the park property line. The site will require roughly an acre of land and will include a picnic shelter, rubberized surface play zones, a swing area, and a lawn game area. The four corners of the rectangular playground will be for open and arbored seating.

CLEMYJONTRI PARK



NO.	DESCRIPTION	REV./APPROVED DATE

IN VIEW APPROVED BY
OWNER OR SITE DESIGN SERVICES

NO. 11 of 11
Consultant File Number
123-456789



CONCEPTUAL DEVELOPMENT PLAN
REVISED 10-23-01
CLEMYJONTRI PARK



GEF
G. E. Fielder & Associates
Planners, Engineers, Landscape Architects
14201 Laurel Park Drive, Suite 105
Laurel, Maryland 20707-6291
Phone (301) 470-2544

CLEMYJONTRI PARK



Ample landscape planting, especially shade trees, will make the area cooler and more user friendly. One existing tree of note must be protected and saved during construction - an old red cedar near the existing tennis court. The tennis court should be removed and become part of the playground. A critical element of the play area will be restroom facilities. These should be handicapped-accessible and include a changing table and water fountains. The use of Port-a-Johns will not be allowed.

On the north side of the playground, there will be ample space for an open play field and access to a perimeter trail that will eventually encompass the property.

3. Stormwater Management

The amount of impervious surface proposed will mandate some sort of stormwater management. The best location for such a pond would be in the first 150-feet back from Georgetown Pike, because there is a low area there already, and because no structures or parking are allowed in this restricted zone. If



deemed necessary, an additional SWM area will be located in the Southwestern portion of the site.

4. Perimeter Setbacks and Screening

According to Fairfax County regulations, a 35-foot setback with buffer planting is required on the east and west sides of the park where subdivisions are located. However, landscaped screening/buffer planting between the park and the Ballantrae and Evermay residential areas will be doubled from 35 feet to 70 feet. A 6-foot high, vinyl coated, chain link fence will be constructed along the border between the park and Evermay and Ballantrae. The fence will be constructed to maximize the preservation of existing vegetation, and will be no closer than 35 feet from the property line of the Evermay and Ballantrae residences. Other than fencing, no new structures, including trails, will be constructed within 70 feet of residential property lines.

5. Quality of Life Issues

Privacy of the residents will be enhanced via the larger screening/buffer distance. Boom boxes will not be allowed in the park and noise will be restricted per FCPA current policy. Fees for use of the carousel will be established by the FCPA to help offset the cost of operating staff but additional commercialized amusement equipment will not be developed for fund raising or other purposes without a plan amendment. Park lighting shall use full cut-off fixtures and be placed so that there is no light trespass onto adjoining properties. The picnic shelter and area will be immediately proximate to the carousel.

B. Phase II Elements

1. Parking Area

A second parking area is required for final park development. The lot is proposed for up to 55 spaces in order to serve events and activities at the house and gardens. This size will fit comfortably on the site between the large barn and the old access drive from Dolley Madison Boulevard. Additional planting will be needed to screen the lot

CLEMYJONTRI PARK

from the garden area. A gated and locked service entrance, set back from the ROW and fully controlled by the FCPA, will be on Dolley Madison Boulevard. This access will be used for maintenance and service vehicles only. Cut through traffic will be prohibited. Stub roads into Evermay will not be utilized. The Park Authority shall request that VDOT provide “No Parking” signs along Dolley Madison Boulevard.

2. Large Barn

Due to the deteriorated condition of the large barn, it may need to be removed prior to Phase II development. If the Fairfax County Park Authority wants the barn to remain, it would need extensive renovation before it is released to the County. The county's cultural resources staff expert will make a more detailed study of this and other structures and those recommendations will be the determining factor.

3. Perimeter Trail

Because this second portion of the gift includes a narrow swath of land along the east and west sides of the park that connects to the first phase, a perimeter loop trail can occur during Phase II. As this trail meanders along the Dolley Madison Boulevard property edge, it could perhaps serve as that part of the county's required bicycle path on the north side of the road. It is recommended that as much of the remaining unusual plant material as possible be labeled for the public's information.

Regional trails will be constructed along the park frontage in concert with the County's adopted plan. Connectivity to the park will be as determined by then current County policy.

4. Stormwater Management

The second parking lot may require its own stormwater management facility. If so, it could be located in the field to the west of the lot without disturbing any gardens or other significant park features.

C. Phase III Elements (OPTION 1)

1. House and Gardens

The house and gardens will someday be a major feature of CLEMYJONTRI Park. Until they are turned over to Fairfax County, they will be maintained by the owner, Mrs. Lebowitz. The house and terraces will need certain modifications to make them more accessible. The swimming pool will need to be removed and a gazebo may be constructed to make the gardens more usable for weddings and other outdoor functions. The gardens are lovely and should be maintained by a qualified horticulturist when the county begins to manage this third phase. It is the preference of the Task Force that the house be used as a museum of local history. Alternately, it might be exclusively rented for civic, community and business meetings either on a long- term basis or for occasional events. Alternately, it might be used for special events with only non-amplified music allowed indoor or outdoors and such music shall be limited to 5-string and/or woodwind instruments. By February 2002, the Park Authority RMD staff will work with the current Task Force or a Task Force with the same representatives, to develop this approach to the use of the house. Regardless of the outcome of this process, all events will end by 9:00 p.m.

2. Garage and Private Parking Area

It would be premature to discuss the condition of the existing garage at present or to recommend future treatments. However, the small parking area would be a good place for caterers or a wedding party to park, as well as affording the handicapped good access to the house and gardens. The garage might be adaptable as an on-site office or maintenance storage facility if this is felt to be necessary in the future and the structure is still sound.

NOTE: SEE APPENDIX PAGE 29 FOR MORE INFORMATION ON PHASE III ELEMENTS (OPTION 2)

CLEMYJONTRI PARK

III. MANAGEMENT CONSIDERATIONS

Management of CLEMYJONTRI Park will develop over the years as the phasing is implemented. The Fairfax County Park Authority initially will manage the park from off-site using Area I Maintenance personnel. The site will be staffed when open, and as facilities such as the carousel and restrooms are built, they will be locked when closed. The carousel operation may possibly be managed by volunteer staff. There is no lighting proposed in the park for the first phases; the park will be closed at dusk. Mrs. Lebowitz will be in control of the gate to the private residence. County police will have easy access to patrol the public parking areas and other amenities after hours.

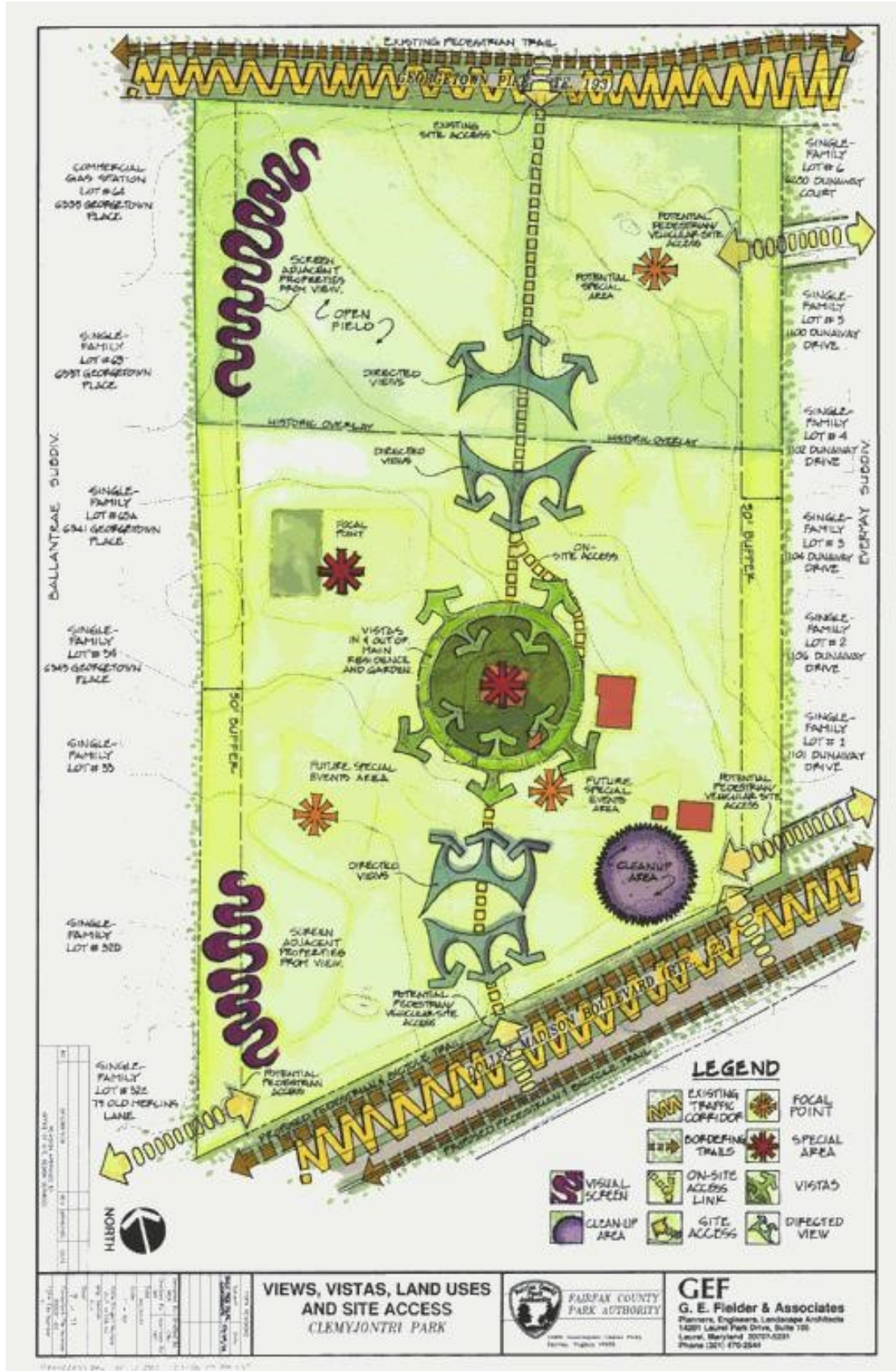
Interim management recommendations that can begin in the immediate future include: an herbaceous plant survey, removal of vines from ornamental and native trees, cleanup of old nursery debris, removal of the small building in the northeast corner of the property, and regular mowing of the Phase I fields.



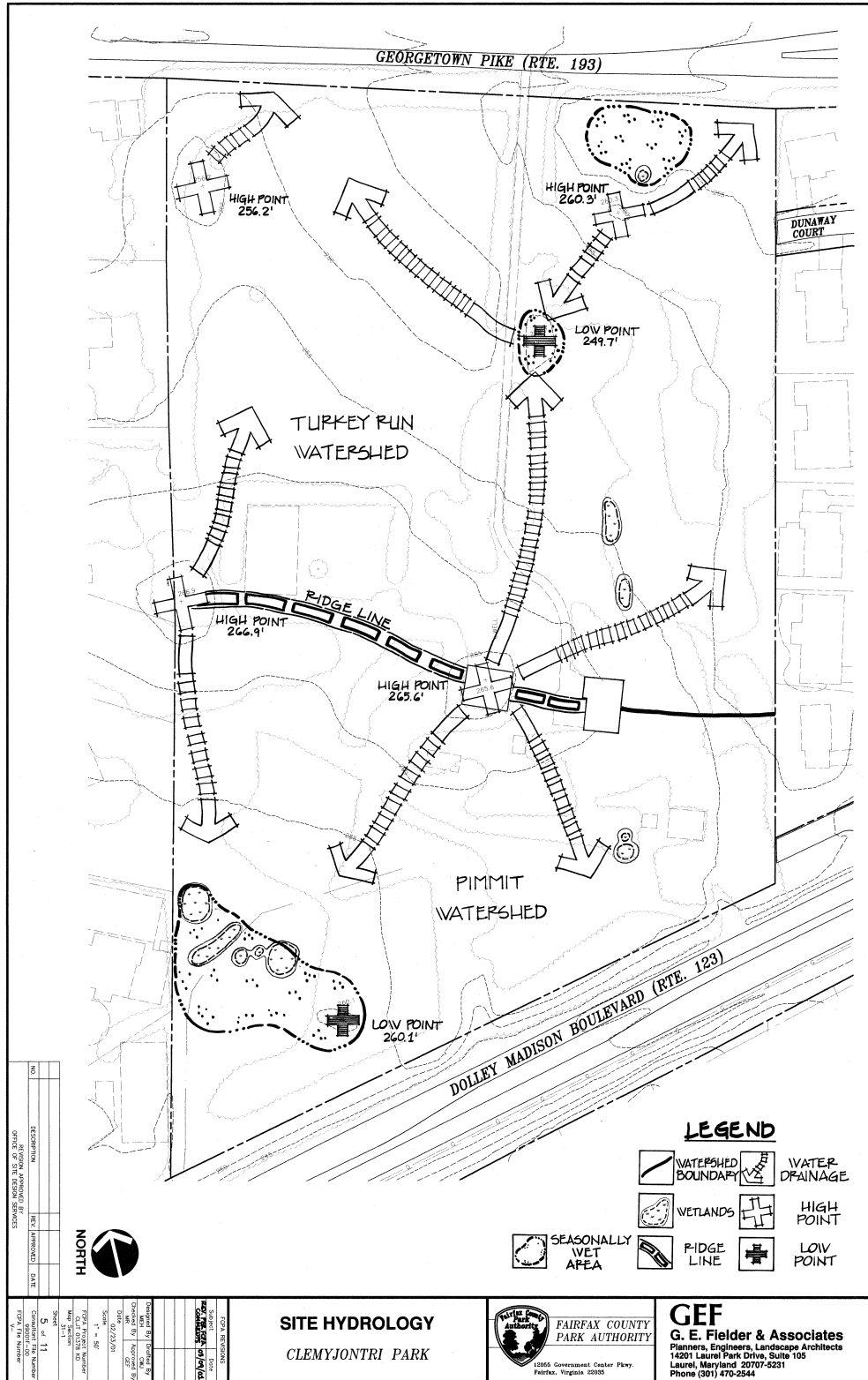
CHART 1 - Preliminary Flora and Fauna Lists

Flora (common names)		Fauna (common names)	
Trees	Vines	Animal	Birds
Silver Maple	Common Greenbriar	Whitetail deer	Carolina Chickadee
Red Maple	English Ivy	Raccoon	Tufted Titmouse
Sugar Maple	Oriental Bittersweet	Red Fox	Cardinal
Box Elder	Five Leaf Akebia	Groundhog	Common Crow
White Oak	Hall's Japanese	Grey Squirrel	House Sparrow
Pin Oak	Honeysuckle	Mole sp.	House Finch
Water Oak			Ruby Crowned Kinglet
Red Oak			Redtail Hawk
Black Locust	Groundcovers and Shrubs		Sparrow Hawk
Sycamore			Northern Waterthrush
Hackberry	Periwinkle		Robin
Chinese Chestnut	Pachysandra		Grackle
Persimmon	Multiflora Rose		
Black Cherry	Blackberry Sp.		
Elm sp.	Common Ligustrum		
Ailanthus, Tree of Heaven	Arborvitae		
Beech	Autumn Olive		
River Birch	Bamboo sp.		
Black Locust			
Canadian Hemlock			
Sweetgum			
Red Cedar			
Norway Spruce			
Ginko			
Saucer Magnolia			
Southern Magnolia			
China Fir			
American Holly			

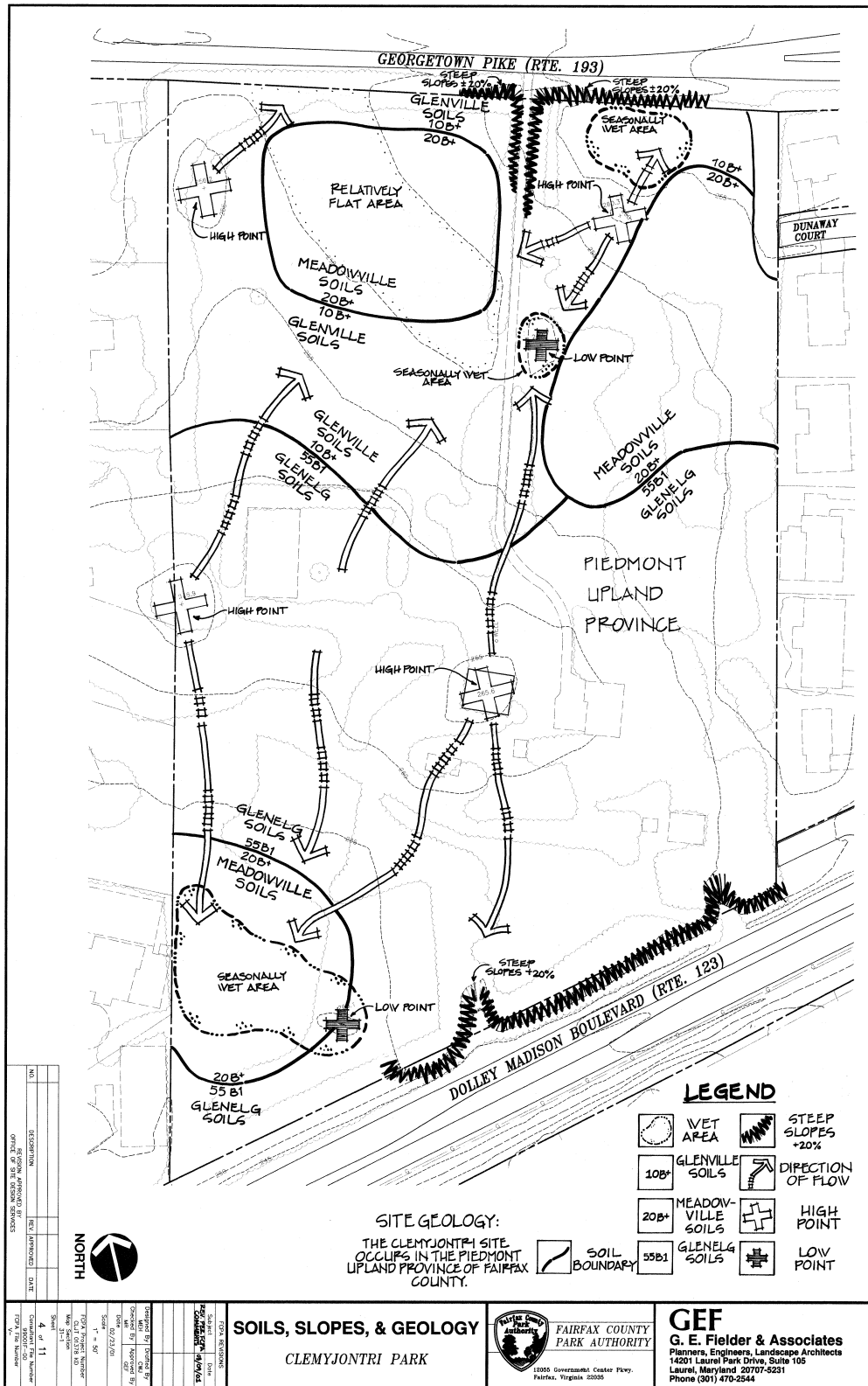
CLEMYJONTRI PARK



CLEMYJONTRI PARK



CLEMYJONTRI PARK



SSGeodwg 02/13/2001 12:20:51 PM PM EST

CLEMYJONTRI PARK

APPENDIX: Phase III Elements (Option 2)

A. Overview

The original goals of the approved master plan, and the terms provided in the Lebowitz gift agreement, specified that the park is made available for development in three phases (See page 20). The first phase, comprised of the entrance road, main parking lot, large playground facility, and stormwater management facility, was developed and opened to the public in 2006. After the passing of Mrs. Adele Lebowitz in 2013, the life estate was released, and ownership of the residential property was transferred over to the Fairfax County Park Authority (FCPA). The second phase of the park was constructed in 2019. It included the secondary parking lot addition, a stormwater management facility, perimeter trail improvements, and additional buffer plantings for visual screening. The third phase, which consists of the historic Lebowitz house and surrounding garden areas, has not been developed and is the primary focus of this master plan revision.

B. A New Vision for Phase III

Option 2 presents another potential park development concept for Phase III, revising the House and Gardens Zone while keeping the intent closely aligned with the original goals of the approved master plan and complementing the existing features provided in Phases I and II.

Option 2 envisions a new community-serving facility and supporting amenities to provide residents with fine arts, cultural activities, education, or similar opportunities. To ensure the facility's success as a high-quality regional destination, the Park Authority should engage a suitable partner or qualified nonprofit organization to manage this venture's construction and daily operations. Available funding scenarios for capital construction, operation, and maintenance should be explored, such as partner fundraising campaigns and public funds such as development proffer contributions, or bonds, as appropriate. Given Option 2's possible scope as detailed in this report,



Development Phasing Plan circa 2021

implementation may require County zoning action, a positive determination under Va. Code 15.2-2232 or applicable section, and other legislative approvals typical for the construction of new public or quasi-public facilities.

1. New Arts Center Building

As the focal point of the revised plan, a publicly accessible community-serving facility, or similar use, could be programed for a wide variety of opportunities and experiences. Such programs could be aimed towards engaging visitors through

CLEMYJONTRI PARK

both visual inspiration and hands-on, creative expression. Such a facility could include large gallery spaces in which artists could exhibit their work as well as studio and classroom spaces for art instruction to students of all ages and abilities. Specific details on facility design, usage, and hours of operation shall be reviewed and approved via public processes prior to development. These processes are administered by Fairfax County Department of Planning and Development and the Planning Commission and additional public hearings are typically required.

2. Historic House

The existing homestead shall remain a visual centerpiece of the property. Its preservation and refurbishment remain a high priority, and it will need to meet accessibility standards provided by the American's with Disabilities Act (ADA). The structure could become a place for offices, meeting rooms, and other administrative uses.

Archeological reconnaissance inside the house and in the surrounding garden areas should be carried out before new construction.

3. Parking

Parking at Clemyjontri Park is already in high demand with the current facilities and the inclusion of an arts center, or similar use, will increase the current demand even further. Additional parking spaces, including ADA spaces, will be necessary to serve both typical daily functions and any potential larger scale evening functions. To account for any infrequent large functions, a pervious-surface overflow parking lot to the east of the exiting surface lot will offer a means to temporarily address increased parking demand. Shuttle buses from an offsite location may also be considered. The overflow parking lot should be constructed with a reinforced turf paving system to withstand the impact of vehicular traffic.

4. Outdoor Amenity Spaces

Within the proposed building's courtyard, there should be an outdoor social gathering area with gardens. This space can offer opportunities that closely align with the original master plan goals of

providing a space for wedding ceremonies, receptions, large meetings, etc. Additionally, there could be an outdoor classroom area directly adjacent to the Arts Center that offers a special place for unique educational programs that blend natural sciences and art instruction together. There also is a proposed reservable gazebo near the perimeter trail that can provide a flexible space for smaller-scale social activities. Lastly, there is an opportunity for the existing perimeter trails to be populated with public art, sculptures, and seating opportunities to further enhance the natural trail experience. The size, location, style, and orientation of the artwork would be determined at the time of installation.

5. Natural Setting

Maintaining a natural setting in Clemyjontri Park is of high importance. The existing buffer of mature trees to the north of the existing house shall be preserved. These trees provide a necessary physical separation from the adjacent playground use, and the newly proposed arts center or similar use. Additionally, new planted buffers are recommended to reinforce the visual screening of new structures, parking lots, and lights from adjacent landowners. The planted buffers also minimize the impact of any potential onsite noise. The new proposed plantings should consist primarily of densely planted evergreen shrubs and trees and should comply with all standards and guidelines provided in the park's Natural Area Management Plan. Additional fencing should be considered if necessary to further minimize any sound and visual impacts.

C. Conclusion

All site elements referenced above are depicted in the following revised Conceptual Development Plan for the Phase III House and Gardens Zone. It's important to note that Master Plans and their supporting graphics are general in nature and allow flexibility to change the arrangement and layout of spaces and facilities to better respond to site conditions and engineering needs. Details such as parking layout, drainage, stormwater management, site lighting, and ADA accessibility are to be determined during future site planning

CLEMYJONTRI PARK

and engineering. At such time, the developer of the arts center (or similar) must identify and reasonably mitigate any adverse impacts to the existing park uses and community, and shall comply with any development provisions as may be stipulated by Fairfax County, such as obtaining any necessary land entitlements, approvals, or building permits.



Phase III House and Gardens Zone (Option 2) Conceptual Development Plan

Clemyjontri Park Master Plan Revision

Park Authority Board Meeting

January 12, 2022





Project Overview

- Master plan revision offers an alternative development concept (Option 2) to the Phase III portion of Clemyjontri park
- Introduction of an Arts Center, or similar community focused use
- Staff conducted two public comment meetings





Conclusion

- Summary of Public Comments
 - Size and appearance of a new facility
 - Hours of operation
 - Wedding Ceremonies and party use
 - Noise & lighting impacts
 - Parking and traffic impacts
- Next Steps
 - Acquire Park Authority Board approval of revised master plan

