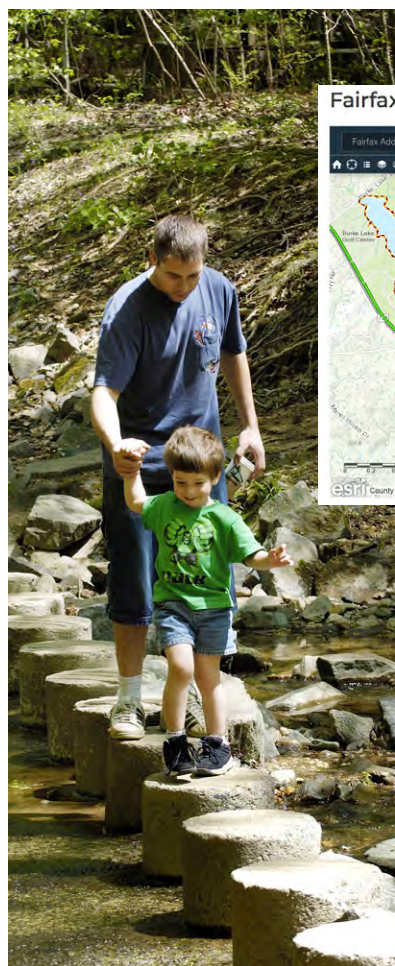




Bluebells Usher in Spring

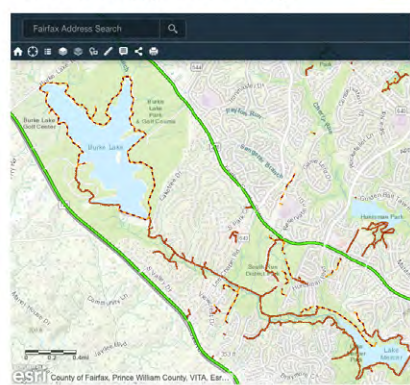
Celebrate the first signs of spring by attending the Bluebells at the Bend festival Saturday, April 14 at Riverbend Park in Great Falls! These breathtaking beauties usher in springtime by carpeting the park's floodplain with their magnificent blooms, and the bluebells are so abundant in some areas, you can't see an end! The event features wagon rides, wildflower walks, musical entertainment and more! It's a perfect way to expend some energy outdoors and to celebrate spring's arrival. See for yourself the glorious display that draws generations of wildflower watchers to Riverbend Park every year. For festival details, see the Events section of Parktakes.

You can also see bluebells and learn about other harbingers of spring during wildflower walks and cherry blossom activities in several Fairfax County Parks. For more information, see the Nature, Gardening and History sections.



Inspire Yourself with a Spring Hike

Fairfax County Trail Buddy



Need a cure for cabin fever? Take a hike! Hiking is a form of exercise that anyone can take up at any age, and Fairfax County is well-known for its picturesque and diverse trail system. Spring is the perfect time to explore our area's hundreds of miles of woodland trails and enjoy the beauty of emerging wildflowers and migrating birds. Mapping your route and calculating the distance is easy with the Park Authority's online mapping tool, Trail Buddy. Connect with Trail Buddy at www.fairfaxcounty.gov/parks/trails, map your route and embark on a journey to clear your mind, get some exercise and enjoy our beautiful parks!

One new trail to try this year is Chessie's Trail at Lee District Park. This unique, fully accessible path was designed with children in mind. Along the trail, you'll find family-friendly interactive features including a face sculpture, a tree stump bench, a sound garden, spinning rocks and more. Cross the metal grate bridge and discover a broken path and sidewalk with animal tracks. By the time you reach the stone abacus at the end of the nearly 1/2-mile trail, you will have encountered all kinds of wildlife figures. The trail starts near the treehouse seating area in Chessie's BIG Backyard at Lee District Park.

Explore the trails with a naturalist and learn about everything from the trees to the creatures that call the park home. To find a program near you, turn to the Nature and Outdoor Recreation sections.

