



***HOOES ROAD  
PARK  
FIELD LIGHTING  
Public Meeting  
May 29, 2019***



# HOOES ROAD PARK

7233 Hoose Road, Springfield - Maintenance Area 4 - Lee District  
Level 2's - Fields 1, 2, 3 & 4

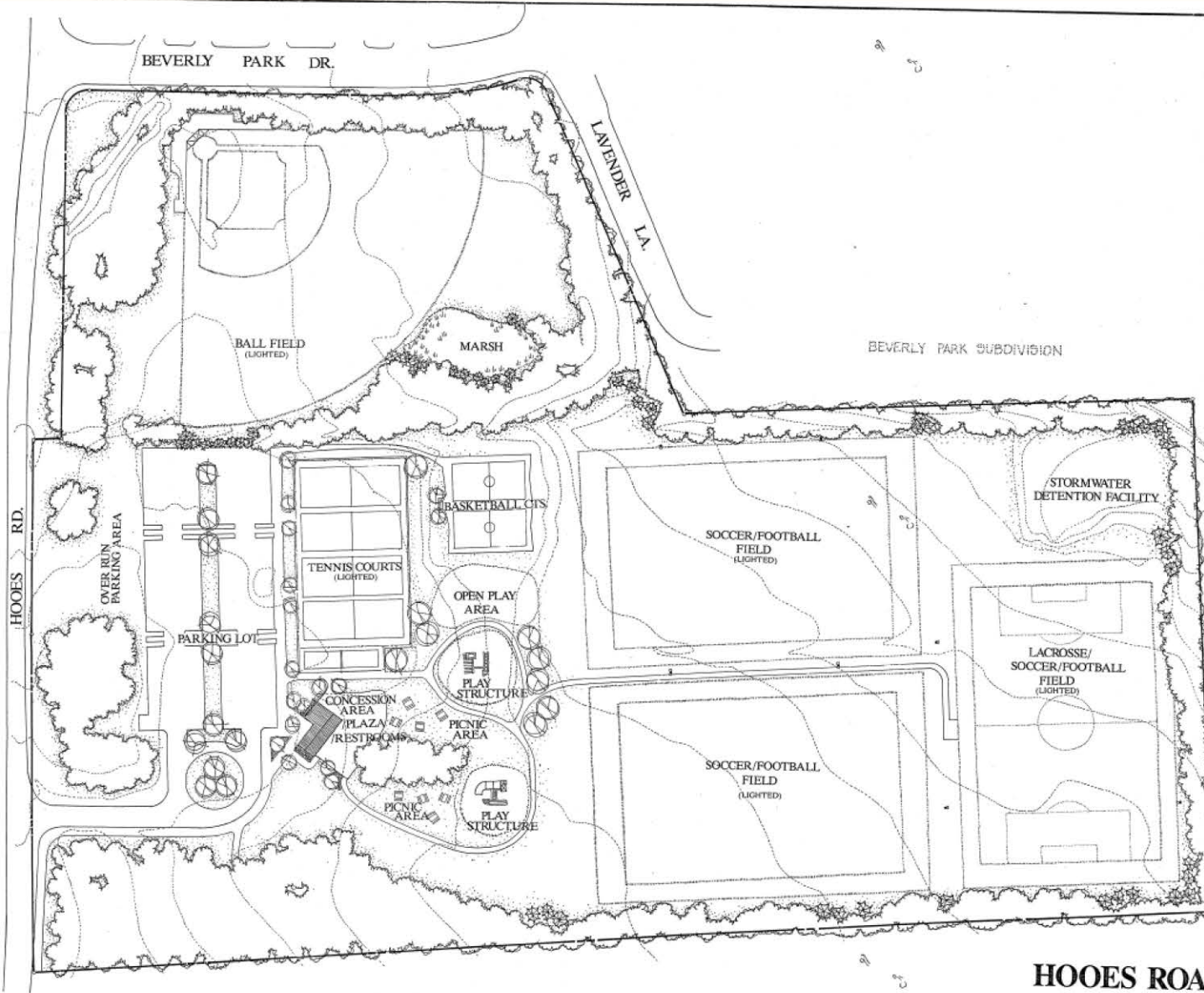


## Field Information

- 1- 90' Bases, 321' Fence
- 2- 183' x 294' Grass
- 3- 195' x 300' Grass
- 4- 183' x 300' Grass



# Hooes Road Park Master Plan – Revised 1994



FAIRFAX COUNTY PARK AUTHORITY  
 CARL SELL, JR. CHAIRMAN  
 FREDERICK M. CRABTREE VICE CHAIRMAN  
 MARTHA H. TALBOT SECRETARY/TREASURER  
 R. STANLEY BUCKWAY  
 NANCY L. BROWN  
 NEWTON W. EDWARDS  
 D. MICHAEL HARVEY  
 ESTELLE R. HOLLEY  
 JOHN MASTENBROOK  
 PAUL N. PEPPER  
 JOSEPH P. DOWNS DIRECTOR  
 DONALD F. LEDERER SUPT. OF DESIGN

FOR INFORMATION  
 PURPOSES ONLY!!

## MASTER PLAN HOOES ROAD COMMUNITY PARK

SCALE: 1"=50' 21.4 AC.  
 QN TAX MAP 90-3

APPROVED SEPTEMBER 1974  
 REVISED SEPTEMBER 1994  
 97070-366

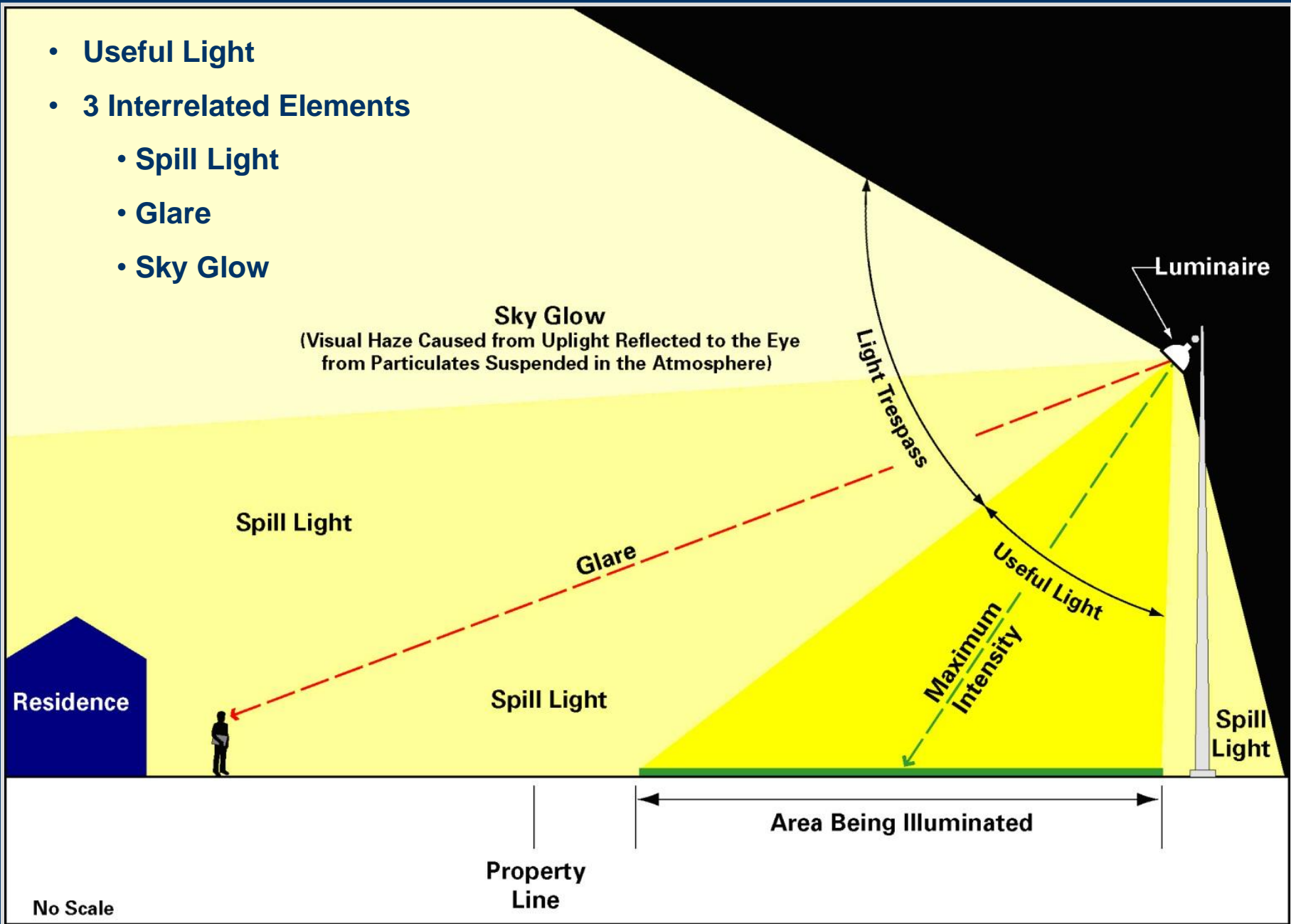
# Lighting Project Background

---

- Springfield South County Youth Club (SYC) proposal to sponsor lighting installations at Fields 2 and 3
  - Phase 1 – Field 3, **lights off at 9:30 PM**
  - Phase 2 – Field 2
- Approved Master Plan
  - Shows lighting on all fields
  - Shows concession/restroom building
- Field 3 Schedule: installation late Fall 2019
  - LED Lighting
  - 70 foot pole heights
- Field 2 Schedule - TBD

# Obtrusive Light

- Useful Light
- 3 Interrelated Elements
  - Spill Light
  - Glare
  - Sky Glow





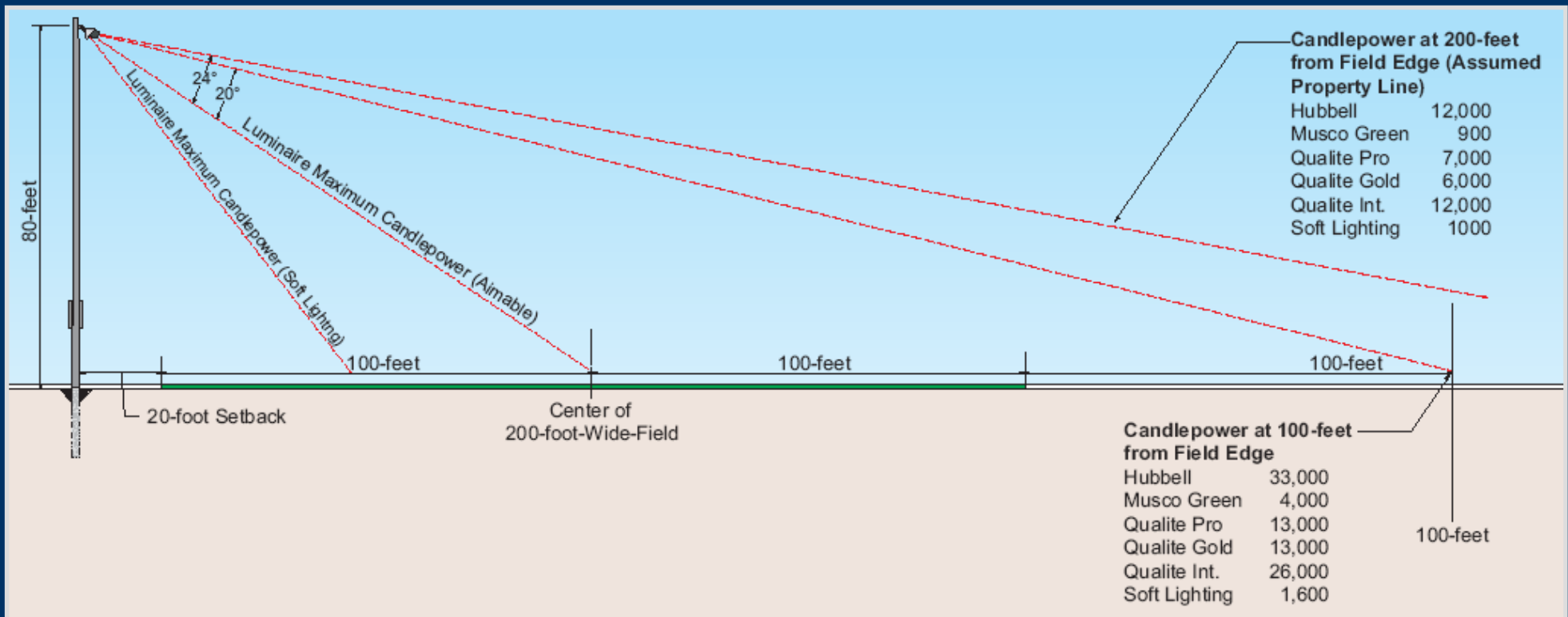


Mason District Soccer Field New LED Lighting



# Control of Obtrusive Light

- Shielded Fixtures
- Appropriate Pole Heights
  - Downward Aiming Fixtures
  - Optimum Aiming
  - Fewer Fixtures





# *Field Lighting History*

- **Before 1990**
  - **Light Trespass Not Considered**
  - **No Spillover Control**
  - **Wooden Poles**
- **After 1990**
  - **FCPA Addresses Light Trespass**
  - **Concrete Poles**
  - **Lighting Control**
- **Latest**
  - **light-emitting diode (LED)**



# LED ATHLETIC FIELD LIGHTING



# Field Lighting History

**1977**

SportsCluster-

**1989**

SportsCluster.2

**1989**

SportsCluster.2  
Level 8™

**1989**

SportsCluster.2  
Total Light Control™

**2005**

Light-Structure  
System™  
Green Generation™

**Today**

Light-Structure  
System™  
TLC for LED™



Photographed at 100 ft (30 m) from field edge



# LED Light Advantage

---

- Energy Efficiency – Reduces energy consumption by 63 percent when compared to typical 1500-watt metal halide equipment
- Light Precision – Customized optics minimize off-site spill light and glare to not disturb the natural surroundings
- Musco's Control-Link® system allows for centralized programming of lighting system via web connection for on-off control based on scheduled field usage.
- Warranty period : 25 years.

# *Light System Control*

- **Control Link**
- **Satellite**
- **Internet-based**
- **Phone**
- **Staffed Control Center**
- **Field Control Units**
- **System Monitoring**



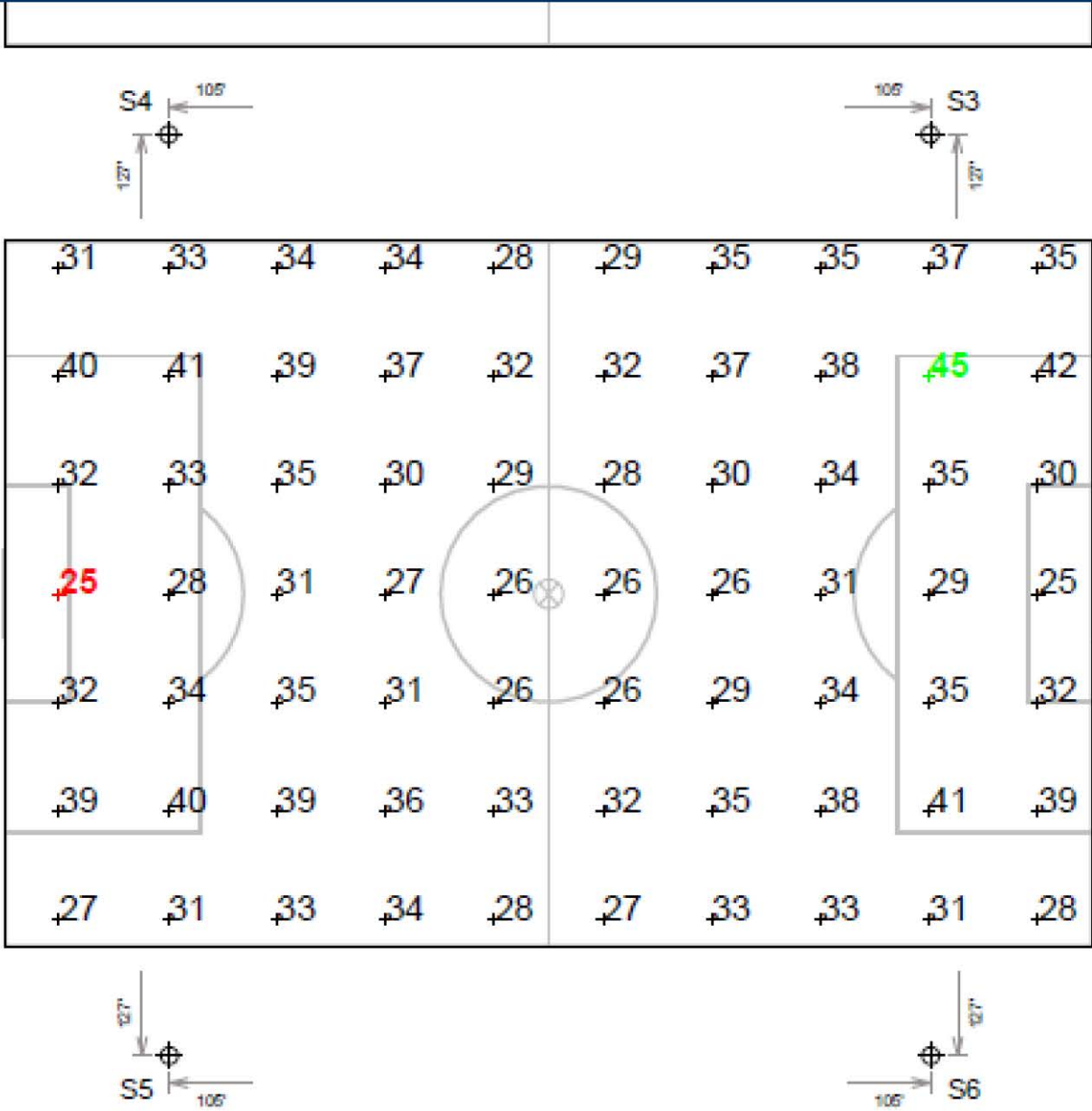
# Field Lighting Standards

- Off-field "Standard A" (within 200' of residential properties) – 0.3 fc maximum
- On-field standards:

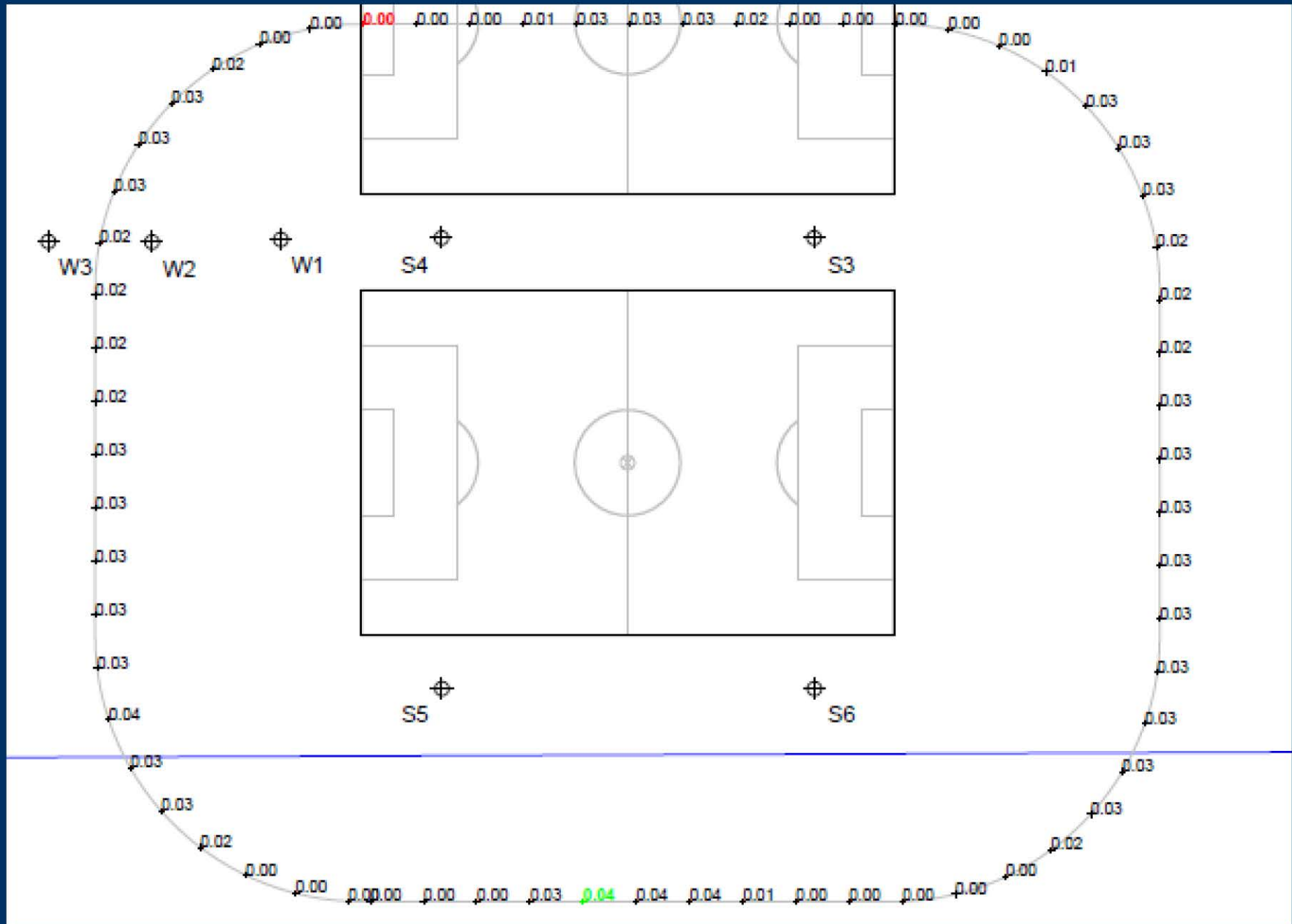
IESNA Recommended Lighting (fc) = foot candles			
Class	Rectangle	Diamond Infield	Diamond Outfield
III – High School	30 fc	50 fc	30 fc
IV – Low Recreation	20 fc	30 fc	20 fc



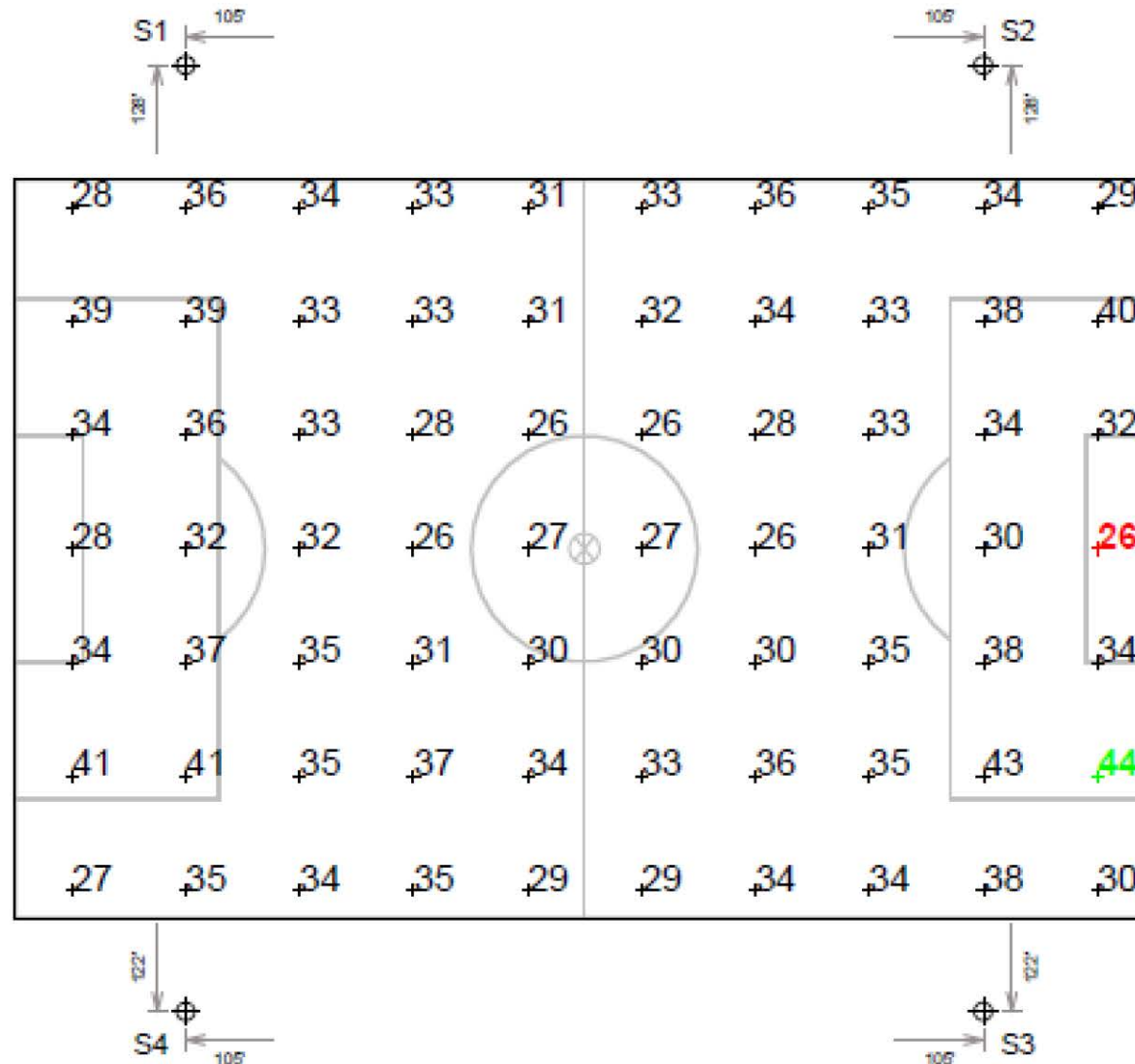
# Field #3 LED Illumination Plan



# Field #3 LED Spill Lighting



# Field #2 LED Illumination Plan







---

***THE PUBLIC COMMENT PERIOD CONTINUES  
THROUGH JULY 1, 2019.***

**Email: [Parkmail@fairfaxcounty.gov](mailto:Parkmail@fairfaxcounty.gov)**

**Mail:**

**Mohamed Kadasi**

**Fairfax County Park Authority Planning &  
Development Division**

**12055 Government Center Parkway, Suite 406  
Fairfax, Virginia 22035**

**Phone: 703-324-8662**

# ***QUESTIONS?***

