



---

# MOUNT VERNON REC CENTER

---

## RENOVATION STATUS REPORT

---

Fall 2024



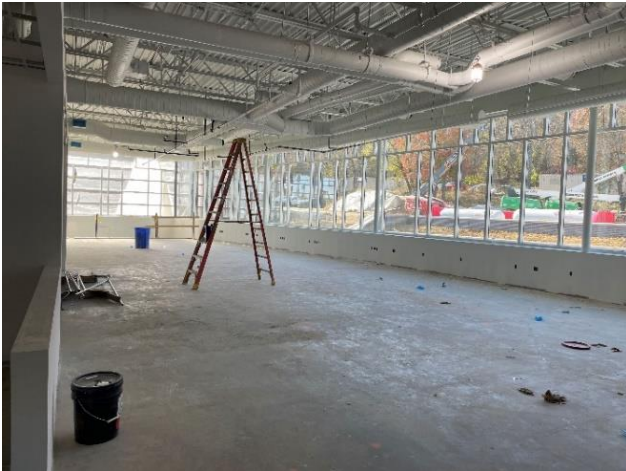
On Dec. 31, 2022, the Mount Vernon Rec Center closed its doors in preparation for a major renovation and expansion expected to last two years. The project will include a complete renovation of the current building, updates to the mechanical systems and expansion. When complete, the state-of-the-art facility will include two NHL-sized ice rinks, a two-level dedicated fitness area, an elevated indoor track, swimming pool, climbing wall and multi-purpose rooms. Anticipated completion is scheduled in the spring of 2025.

### **Project Update:**

Construction remains on schedule for the Rec Center's opening in Spring 2025. Most of the exterior masonry and windows are complete, with metal panels scheduled to be installed over several weeks beginning in late fall. As before, interior work is at various stages of installation progress, as is typical when sequencing the work of multiple trades in a large building.

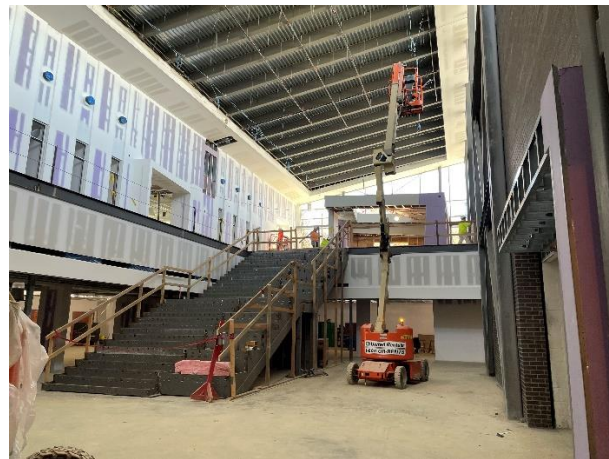
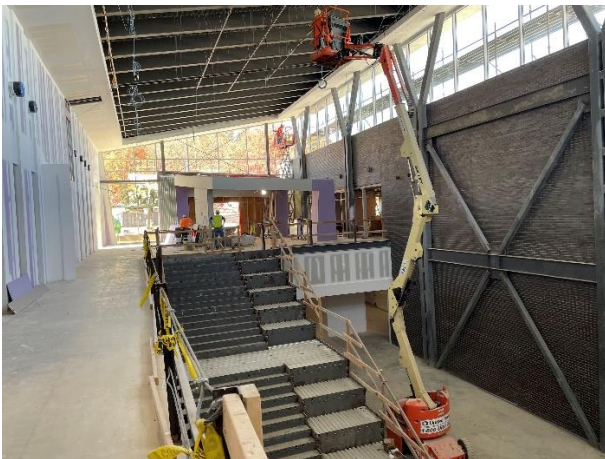
Park Authority staff are in the process of preparing for the Spring 2025 opening. We will be sharing information about the opening as it becomes available at [www.fairfaxcounty.gov/parks/reccenter/mount-vernion](http://www.fairfaxcounty.gov/parks/reccenter/mount-vernion) and on social media. The purpose of this Quarterly Update is to provide a glimpse of the ongoing construction progress at the site.





*Left:* Progress continues in upper-level fitness area.

*Right:* Multi-Purpose Rooms 1, 2 and 3 will be located on the lower-level. Folding walls will allow them to be one large room or three individual rooms.

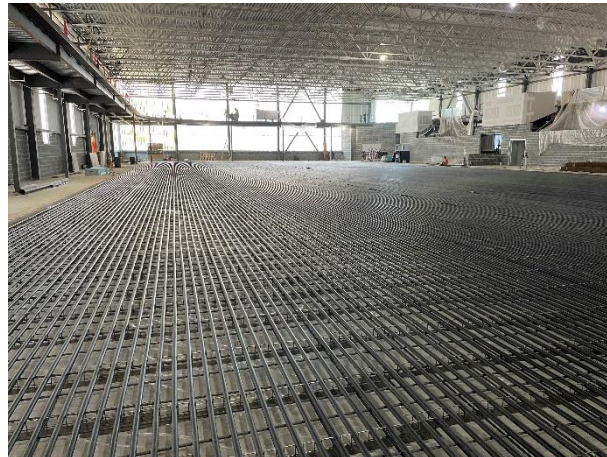
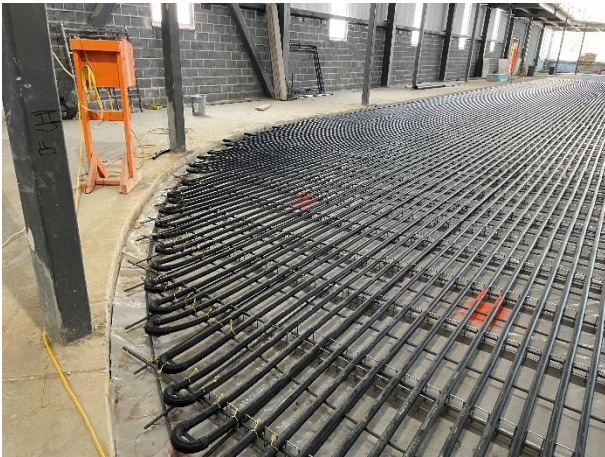


*Left and Right:* The central atrium will include a climbing wall, grand staircase and other amenities.





*Left and Right:* The new rink includes two layers of temperature-regulating lines. The lower lines (shown here) are frostshield tubing which, together with a 4" sand layer and a 3" insulation layer, will help maintain the temperature below the cooled concrete slab.



*Left and Right:* The new rink includes two layers of temperature-regulating lines. The upper lines (shown here) will be encased within the concrete slab so that ice can form above it. Concrete placement is scheduled for mid-November.



*Left:* This will be the lower-level parking lot that provides accessible access to the alternative (and after hours) entrance to the rinks. Underground stormwater management facilities have been constructed beneath much of this parking area.

*Right:* The plaza outside the upper-level fitness area is ready to receive concrete. The plaza will be topped with synthetic grass and be available for classes, camps and other uses.

---

For additional information and background on the project, and to sign up for future email updates, please go to [www.fairfaxcounty.gov/parks/planning-development/development/mount-vernon-recenter](http://www.fairfaxcounty.gov/parks/planning-development/development/mount-vernon-recenter).