

Are you ready to accept a mission to the moon? Be on the lookout to become an FCPA astronaut! Snap a selfie and post it on Instagram with #FCPAmoonwalk. You could win one of several weekly prizes!

DISCOVERY TRAIL '19



Lake Fairfax Park, 1970s

Sully Historic Site
3650 Historic Sully Way
Chantilly

E.C. Lawrence Park
5040 Walney Rd.
Chantilly

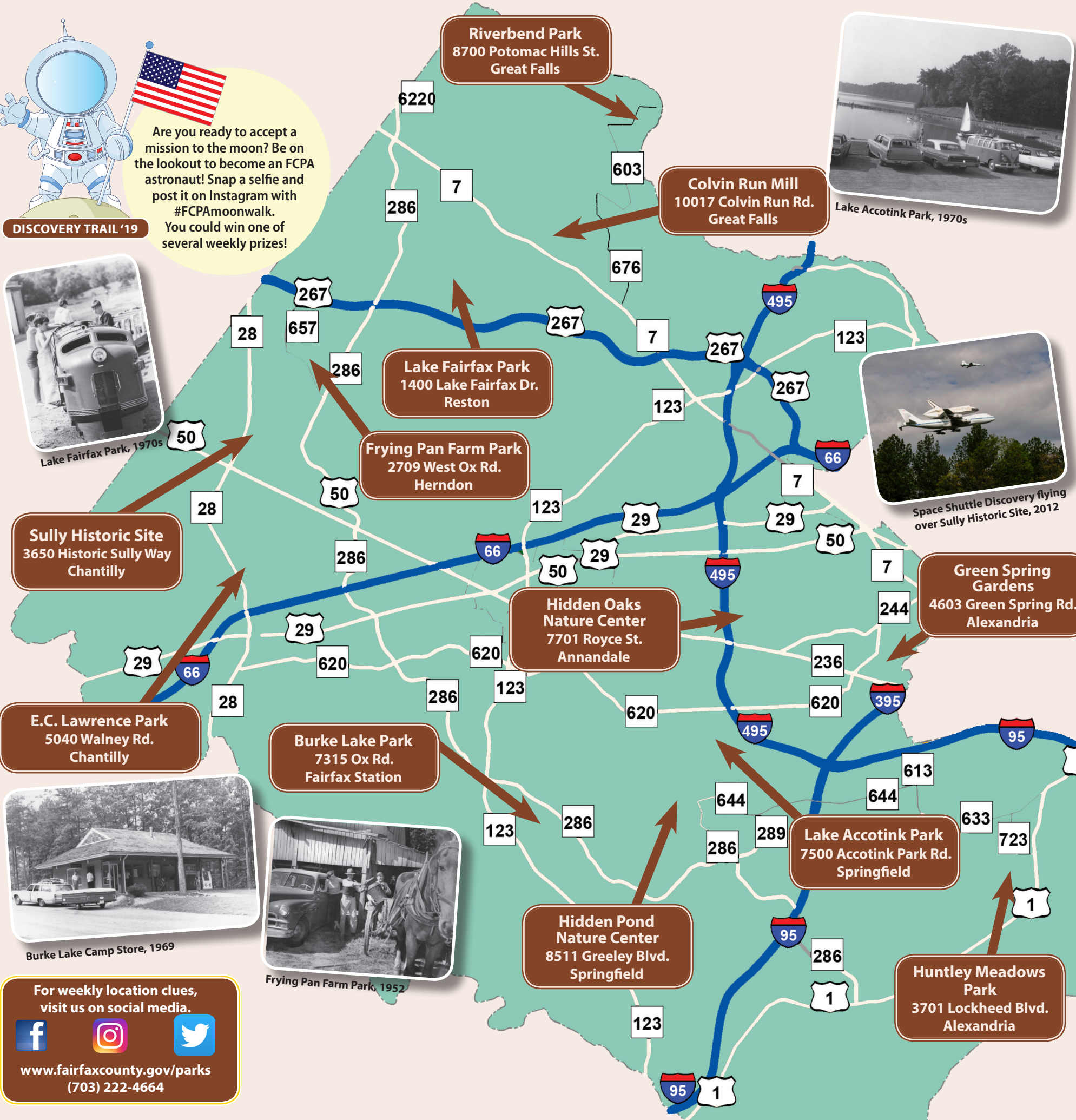


Burke Lake Camp Store, 1969

For weekly location clues,
visit us on social media.



www.fairfaxcounty.gov/parks
(703) 222-4664



Lake Accotink Park, 1970s



Space Shuttle Discovery flying over Sully Historic Site, 2012



Frying Pan Farm Park, 1952

Instructions

- Visit eight of the 12 parks during business hours.
- Pick up a sticker for each park at the sticker location listed in the table below, and place it in the corresponding box (participant must be present to receive a sticker).
- Once you receive eight stickers, present your map in person at Burke Lake Park, Green Spring Gardens or Frying Pan Farm Park to receive an amusement prize packet and be entered in a drawing for a new bicycle!
- One grand prize bicycle winner will be selected in each of the following categories: Pre-K-Grade 2; Grades 3-7; Grades 8-12; Adults age 18 yrs.+
- Bicycle winners will be announced in September in a Park Authority news release and in the winter (November) issue of Parktakes magazine.

Stickers

Weekend and holiday hours may vary. Visit www.fairfaxcounty.gov/parks to verify park hours.

Burke Lake Park	Colvin Run Mill	E.C. Lawrence Park
HOURS: 11 a.m.-6 p.m. daily	HOURS: 11 a.m.-4 p.m. daily; closed Tuesdays	HOURS: 9 a.m.-5 p.m. weekdays; closed Tuesdays; Noon-5 p.m. weekends
Prize Pack Location: Park Office	Sticker location: Mini Golf & Train Station	Sticker location: General Store
Frying Pan Farm Park	Green Spring Gardens	Hidden Oaks Nature Ctr
HOURS: 9:30 a.m.-4:30 p.m. Monday-Saturday; 11 a.m.-4:30 p.m. Sunday	HOURS: 9 a.m.-4:30 p.m. Monday-Saturday; Noon-4:30 p.m. Sunday	HOURS: 9 a.m.-5 p.m. weekdays; closed Tuesdays; Noon-5 p.m. weekends
Prize Pack Location: Visitor Center	Sticker location: Visitor Center	Sticker location: Horticulture Center
Hidden Pond Nature Ctr	Huntley Meadows Park	Lake Accotink Park
HOURS: 9 a.m.-5 p.m. daily; closed Tuesdays; Noon-5 p.m. weekends	HOURS: 9 a.m.-5 p.m. daily; closed Tuesdays; weekend hours vary	HOURS: Park Office Monday-Friday, 10 a.m.-5 p.m. Ticket Building Saturday/Sunday 10 a.m.-8 p.m.
Sticker location: Nature Center	Sticker location: Visitor Center	Sticker location: Park Office & Ticket Building
Lake Fairfax Park	Riverbend Park	Sully Historic Site
HOURS: 8 a.m.-7 p.m. daily	HOURS: 9 a.m.-5 p.m. weekdays; closed Tuesdays; Noon-5 p.m. weekends	HOURS: 11 a.m.-4 p.m. daily; closed Tuesdays
Sticker location: Park Office	Sticker location: Visitor Center	Sticker location: Visitor Center

Name

Age

Phone

Prize Pack Award

Date:

By:

Lake Accotink Park

The train trestle at Lake Accotink Park has an impressive travel history. This portion of the Orange and Alexandria Railroad was first made of wood and supported Union supply shipments during the Civil War. Today, passenger and freight trains cross a modern concrete and steel trestle.



Lake Fairfax Park



A year after Lake Fairfax became a public park in 1965, a 30-passenger replica of a Mississippi steamwheeler called the

Ella Mae Belle launched for the first time giving park-goers an offshore sightseeing option. These days you can climb aboard the park's modern tour boat or rent a pedal boat.

Riverbend Park

Thousands of years ago, American Indians used dug-out canoes to navigate the Potomac River for hunting, gathering and fishing trips. Canoes were constructed from a variety of trees. Today, people in modern canoes and kayaks can be seen navigating the river off the banks of Riverbend Park.



Sully Historic Site



If Sully's walls could talk, they'd tell you how the Concorde rattled the windows as the supersonic airliner flew over the historic home in the 1970s on the way to Dulles Airport. Sully's original owner, Richard Bland Lee, relied on a fine horse and coach to get around in the 18th century. The Concorde could fly at twice the speed of sound. It was retired in 2003.

Visit eight or more listed sites and receive an amusement prize package AND be entered into a drawing to win a grand prize.

TRANSPORTATION EDITION

DISCOVERY TRAIL MAP

19

Celebrating man's giant leap from the earth to the moon!

Can't get to 8 parks? Register for a moon-related park program and get a bonus sticker to place on any square. For a list of eligible programs visit www.fairfaxcounty.gov/parks/discovery-trail-map



**Promotion runs
May 25 - Sept. 2, 2019**

www.fairfaxcounty.gov/parks
www.fairfaxparkfoundation.org



Special thanks to the Fairfax County Public Library Virginia Room



(703) 324-8563
TTY Va. Relay 711

Burke Lake Park



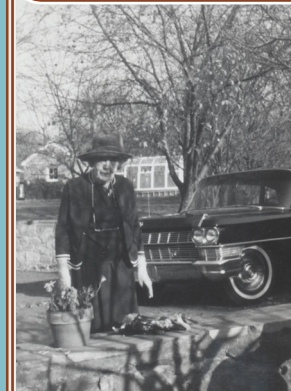
This park has been a popular recreation destination since it opened in 1963, and its 4.7-mile, multi-use trail is a favorite among bike riders of all skill levels. It also provides a gorgeous setting for hikers and runners who enjoy spotting great blue herons and seasonal birds along the way.

Colvin Run Mill

Wagon drivers with two- and four-horse teams delivered Colvin Run Mill flour to neighboring stores and the Herndon train station in the 19th and early 20th century. At its peak, this 208-year-old mill produced about 35 barrels of white flour per day. By 1930, trucks were used for deliveries. The fully restored mill still grinds flour today.



Ellanor C. Lawrence Park



When socialite Ellanor C. Lawrence purchased this property in 1935, it was to serve as a country retreat for her and her husband, David. The two commuted by car to and from their home in Washington, D.C., and her final wish was to give the property to an agency that would preserve its natural and cultural resources. It became parkland in 1971.

Frying Pan Farm Park

Space travel was just a fantasy in this 1930s-era farm's heyday of horse-drawn wagons and ox carts. Frying Pan Farm Park visitors witnessed history on April 17, 2012 when the Space Shuttle Discovery flew by on its way to its current home, the Smithsonian's Udvar-Hazy Center.



Green Spring Gardens

Long before cars were invented, Little River Turnpike was a private toll road that ran right in front of Green Spring Farm. Tollhouses dotted the agricultural thoroughfare every five miles from Alexandria to Aldie, and farmers had to stop and pay at each point. Today the free, public road runs past Green Spring Gardens.



Hidden Oaks Nature Center



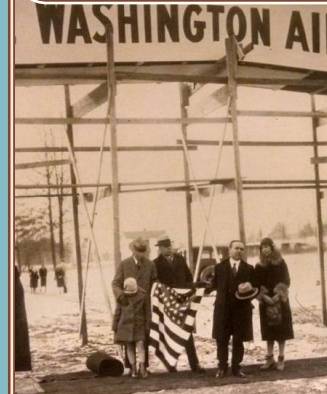
The name of the Park Authority's first nature center stems from a 1960s helicopter flyover of the property which was to have been named Laurel Brake. Oak trees obscured the Park Authority Director's view of the land by air, which inspired the name, Hidden Oaks Nature Center.

Hidden Pond Nature Center

In its heyday, the property around Hidden Pond was farmland, and crops were transported to market by horse and cart. Once it became parkland in 1973, trails were created to give visitors an opportunity to explore the tranquil setting year-round, mostly on foot.



Huntley Meadows Park



If Henry Woodhouse had his way in 1929, Huntley Meadows Park would have become the world's largest airport! He saw Zeppelins as the aircraft of the future. His George Washington Air Junction plans never took off, and Woodhouse lost the property during the Great Depression. It became parkland in 1975.