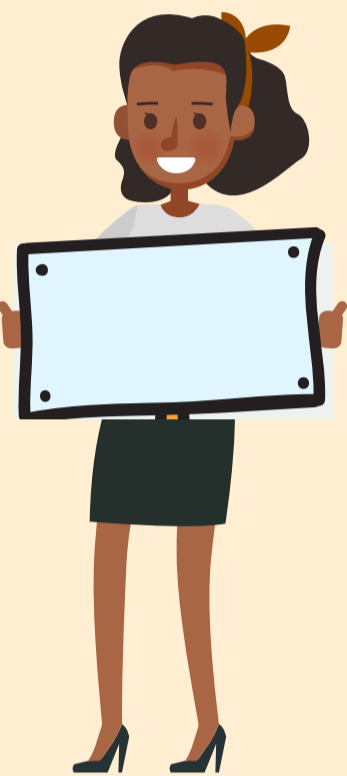




# MARKET COMMUNITY USE AREA GUIDELINES

## Stay home if needed

Stay home if you are sick or have been exposed to someone who is sick.



## Follow the sign regulations

Signs may not be larger than 4' X 4' and may not be appended to trees, prevent access to the sites, or interfere in any way with pedestrian or vehicular traffic.

## First come first served

The Community Use Areas are not reserved, and space is available on a first come, first served basis.

## Follow use guidelines

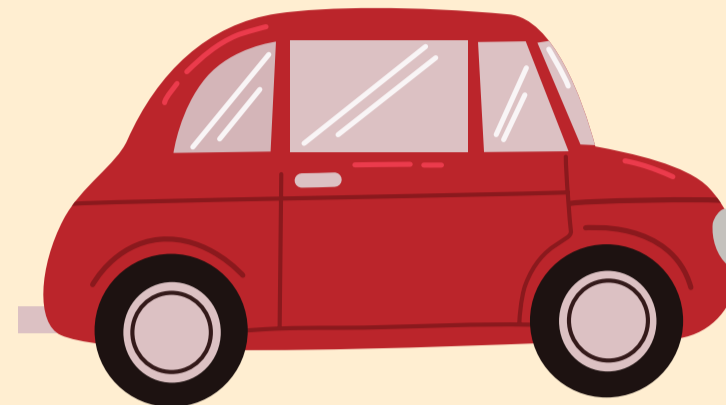
The Community Use Areas are reserved for individuals, community groups, government agencies, and non-profit organizations. The areas are not intended for business transactions.



## Follow space limits

No more than five people are permitted in one Community Use Area space generally, however at this time because of COVID-19 precautions, it is preferred that only one or two people be in a Community Use Area depending on the size of the space. Please contact 703-324-8662 for specific information.

## Engage only with pedestrians



People and cars don't mix. Help prevent a safety hazard by allowing market patrons to park their vehicles first before

interacting with people in the Community Use Area.

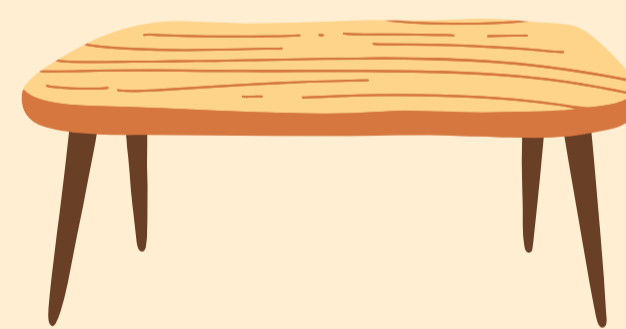
## Don't bring prohibited items

The following items are prohibited within the Community Use Area:

- (a) Firearms as set forth in Virginia Code § 18.2-287.4; or
- (b) Any bat, shield, pole, brick, stone, rock, piece of asphalt or concrete, knife, hatchet, ax, saw, slingshot, blackjack, metal knuckles, mace, metal buckle, chain, crowbar, hammer, club, bludgeon, or other such item that may be used as a weapon.



## Bring your own tables



Each individual or small group may set up a table in the designated space.

Please bring your own

tables, chairs, tents, and other equipment. Any such equipment must be removed within one hour after the site closes.

## Don't use amplified sound

No amplified sound is permitted.

