

Langley Fork Park

Langley Fork Park

Master Plan Revision

Public Information Meeting
October 13, 2011

Fairfax County Park Authority

Langley Fork Park



Tonight's Agenda

- *Welcome / Introductions*
- *Fairfax County Park Authority Overview*
- *Park Authority Planning Process*
- *History of the Site*
- *Current Site Conditions*
- *Open Discussion*

Fairfax County Park Authority

Langley Fork Park

Introductions

- *Fairfax County Park Authority*
- *National Park Service*
- *Louis Berger Group*
- *Fairfax County Park Authority Board*
- *Fairfax County Board of Supervisors*



Fairfax County Park Authority

Langley Fork Park



Park Authority Mission

Enhance citizen's quality of life through:

- Natural & Cultural Resource Stewardship
- Quality Facilities & Services
- Recreational Opportunities

“To set aside public spaces for and assist citizens in the protection and enhancement of environmental values, diversity of natural habitats and cultural heritage to guarantee that these resources will be available to both present and future generations.

To create and sustain quality facilities and services which offer citizens opportunities for recreation, improvement of their physical and mental well being, and enhancement of their quality of life.”

Fairfax County Park Authority

Langley Fork Park

Park Authority Board

- Twelve-member Board
- Appointed by the Board of Supervisors
- Includes a representative for each of the nine magisterial districts plus three at-large members



Fairfax County Park Authority

Langley Fork Park



Park Authority Land Holdings

- 22,700+ acres of land
- 419 parks



Fairfax County Park Authority

Langley Fork Park

Park Authority

**2010 National Gold Medal Award
Excellence in Park and Recreation Management**



Excellence in:

- Long-Range Planning
- Resource Management
- Volunteerism
- Environmental Stewardship
- Program Development
- Professional Development
- Agency Recognition

Fairfax County Park Authority

Langley Fork Park

Park Master Plan

The purpose of a park master plan is to:

- *Develop a site-specific, long-range vision for the park*
- *Identify resources worthy of protection*
- *Assess site conditions and community concerns*
- *Provide a general guide for appropriate park uses*
- *Establish the general location for proposed facilities*

Fairfax County Park Authority

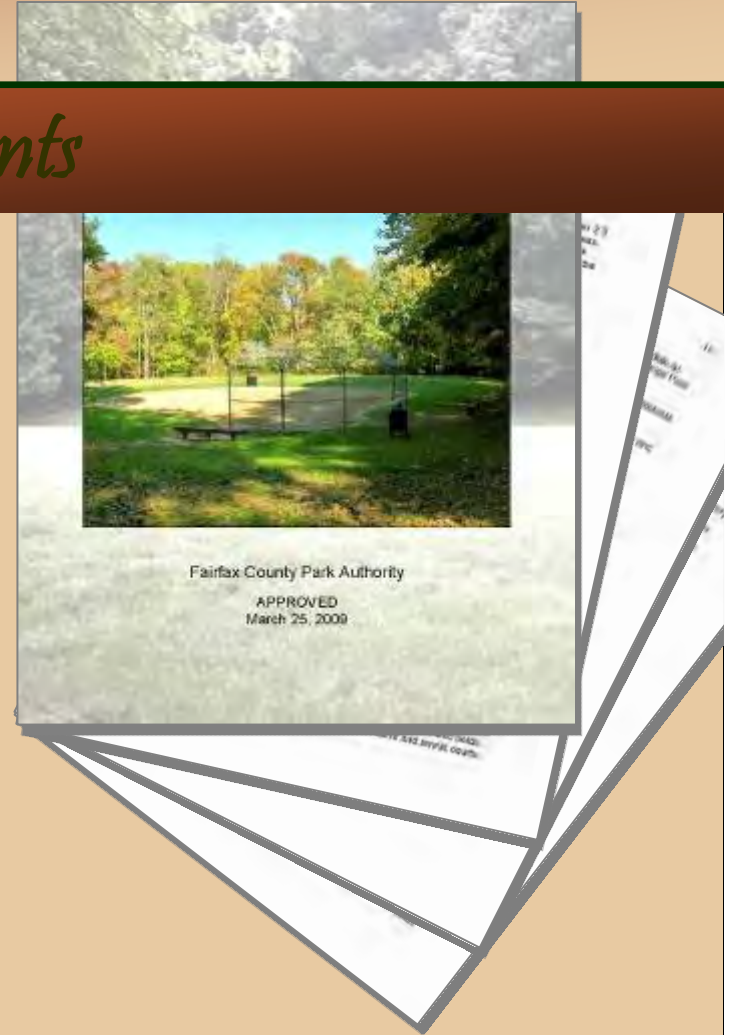


Langley Fork Park

Park Master Plan Components

Written Report

- Establishes park purpose and classification
- Describes existing conditions and constraints
- Describes the desired visitor experience
- Describes the park features
- Identifies design concerns to be addressed at development stage



Fairfax County Park Authority

Langley Fork Park

Park Master Plan Components

Graphics

- Conceptual Development Plan (CDP)
- Graphically shows general location of recommended facilities & use areas
- Conceptual site design, not an engineered site plan

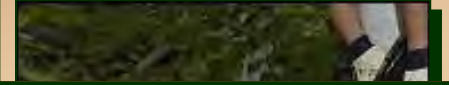


Fairfax County Park Authority

Langley Fork Park

Master Plan Team

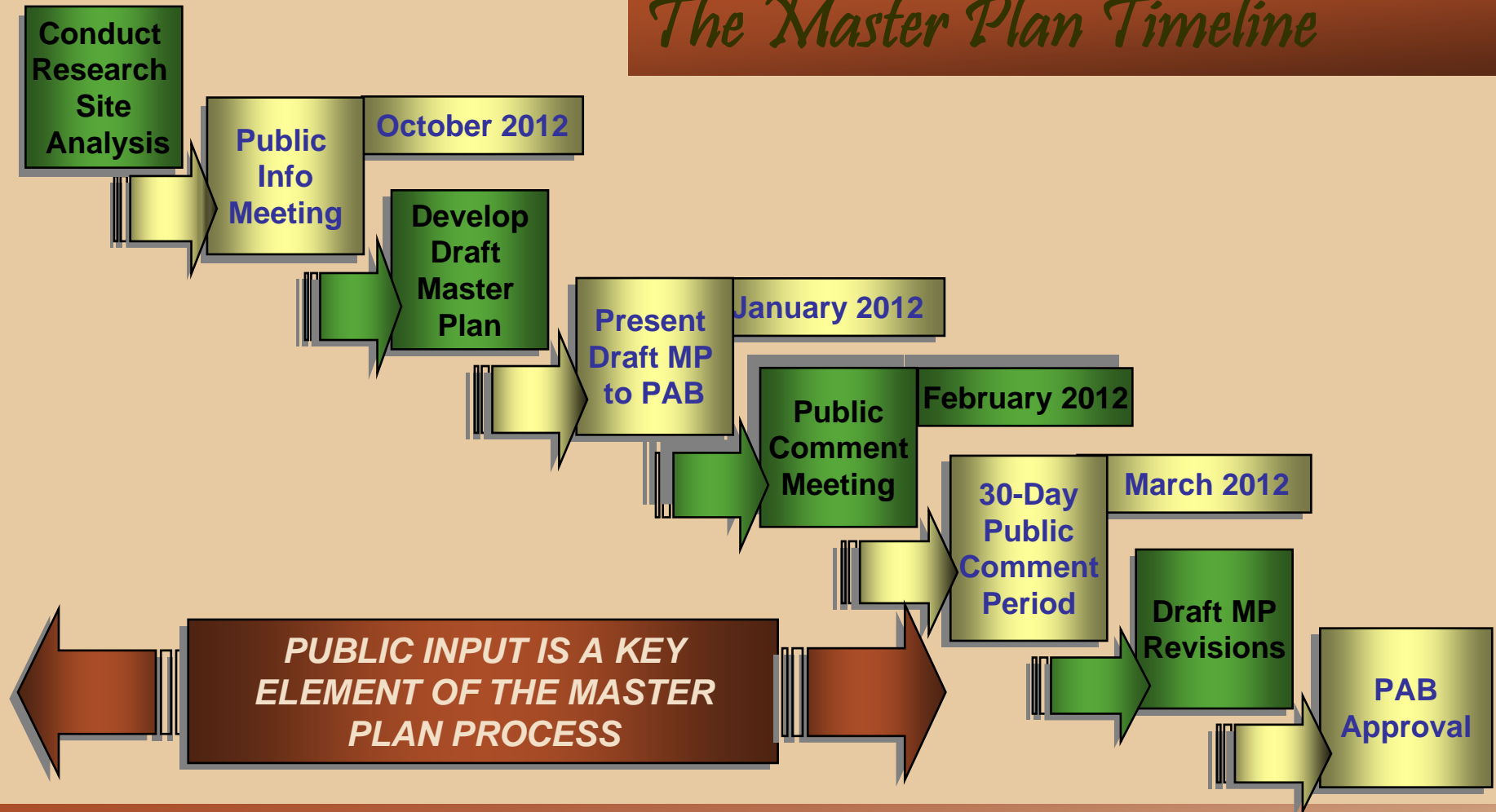
- Archaeologists
- Landscape Architects
- Planners
- Natural Resource Specialists
- Operational Specialists
- Recreation Specialists
- Park Development Specialists



Fairfax County Park Authority

Langley Fork Park

The Master Plan Timeline



Fairfax County Park Authority

Langley Fork Park

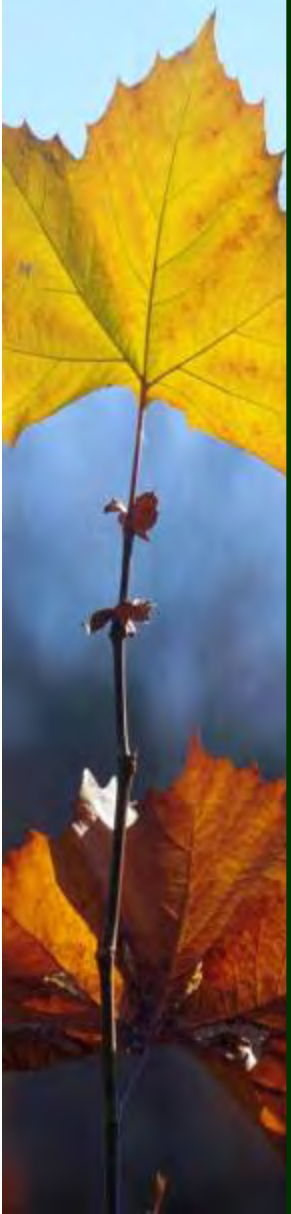
Project Background

2009 Aerial Image



Fairfax County Park Authority

Langley Fork Park

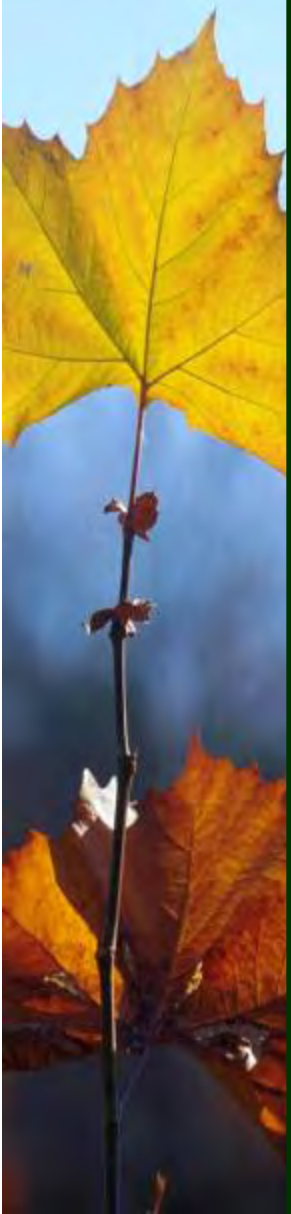


Vicinity Map



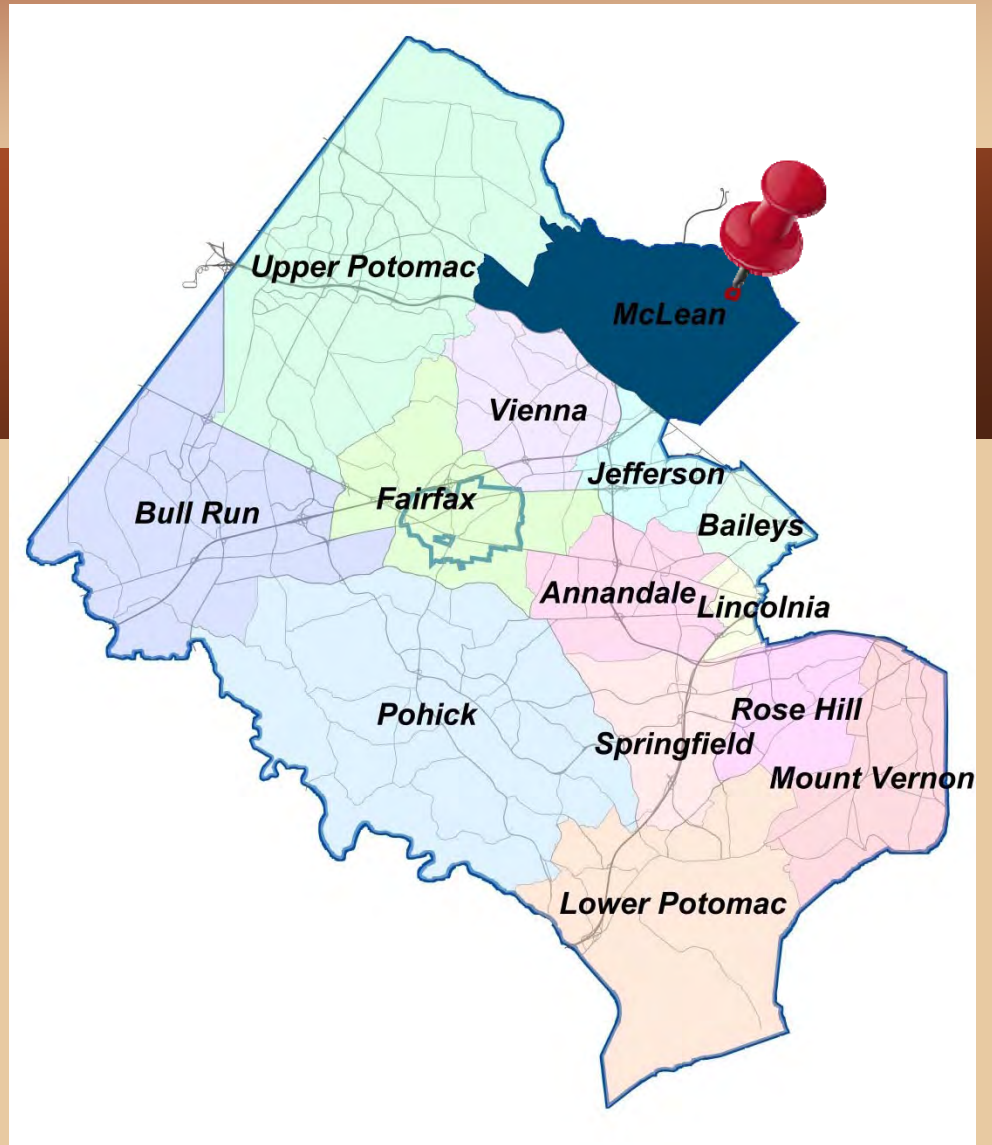
Fairfax County Park Authority

Langley Fork Park



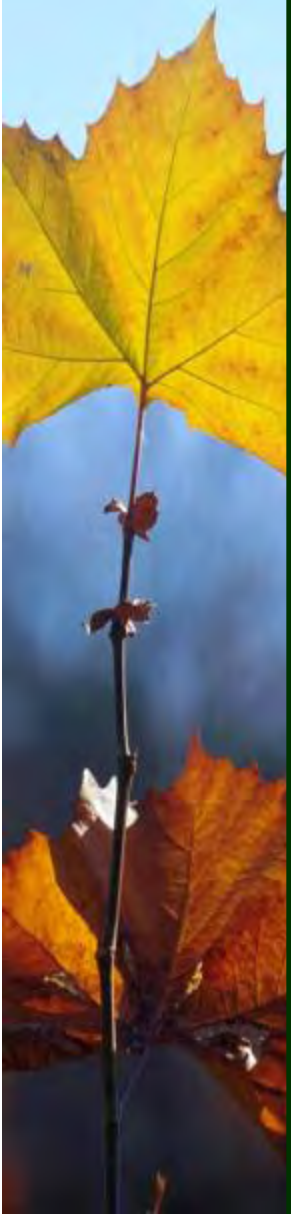
Vicinity Map

McLean
Planning
District



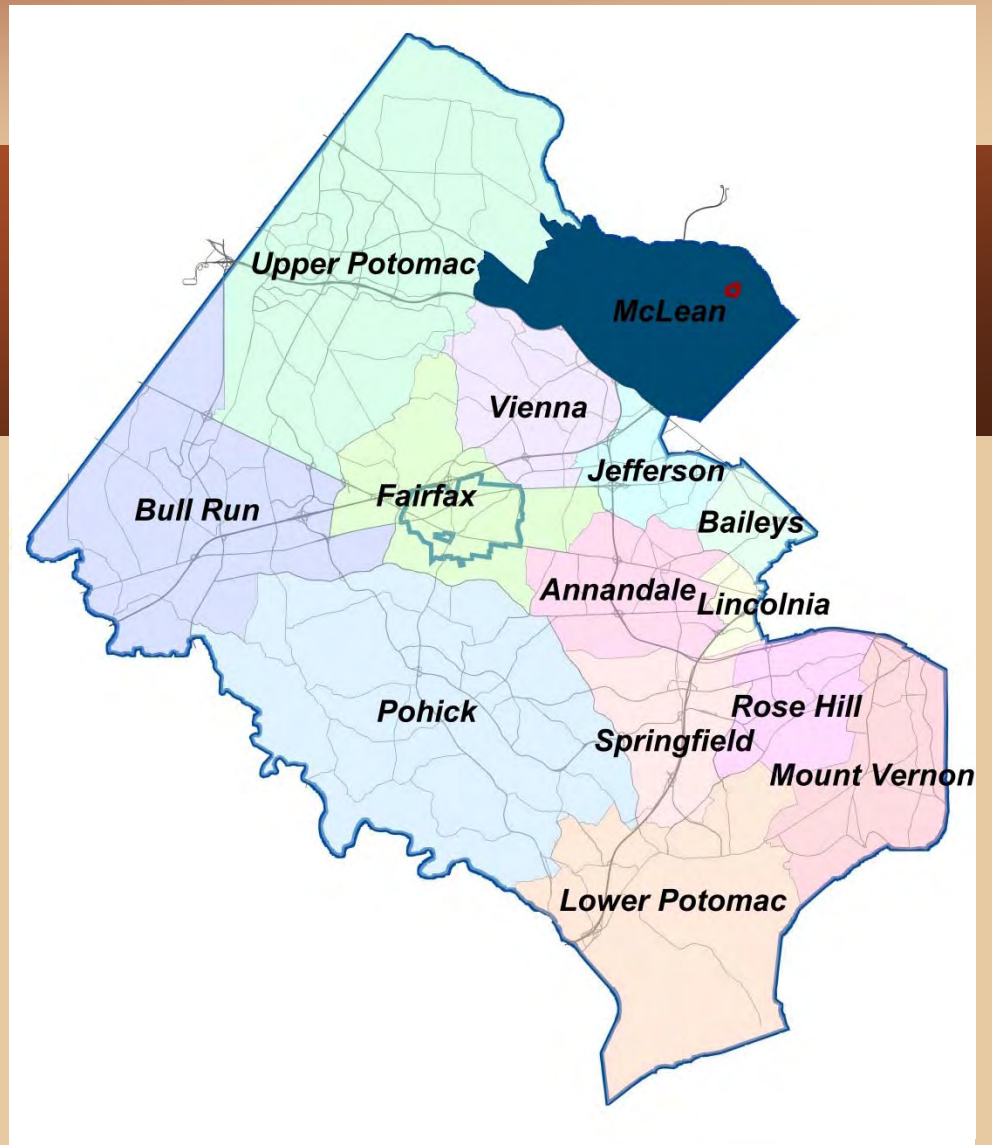
Fairfax County Park Authority

Langley Fork Park



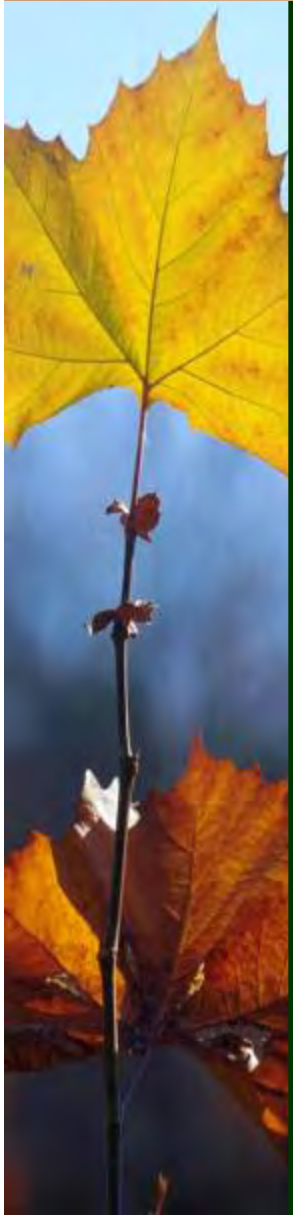
Vicinity Map

Dranesville
Supervisory
District

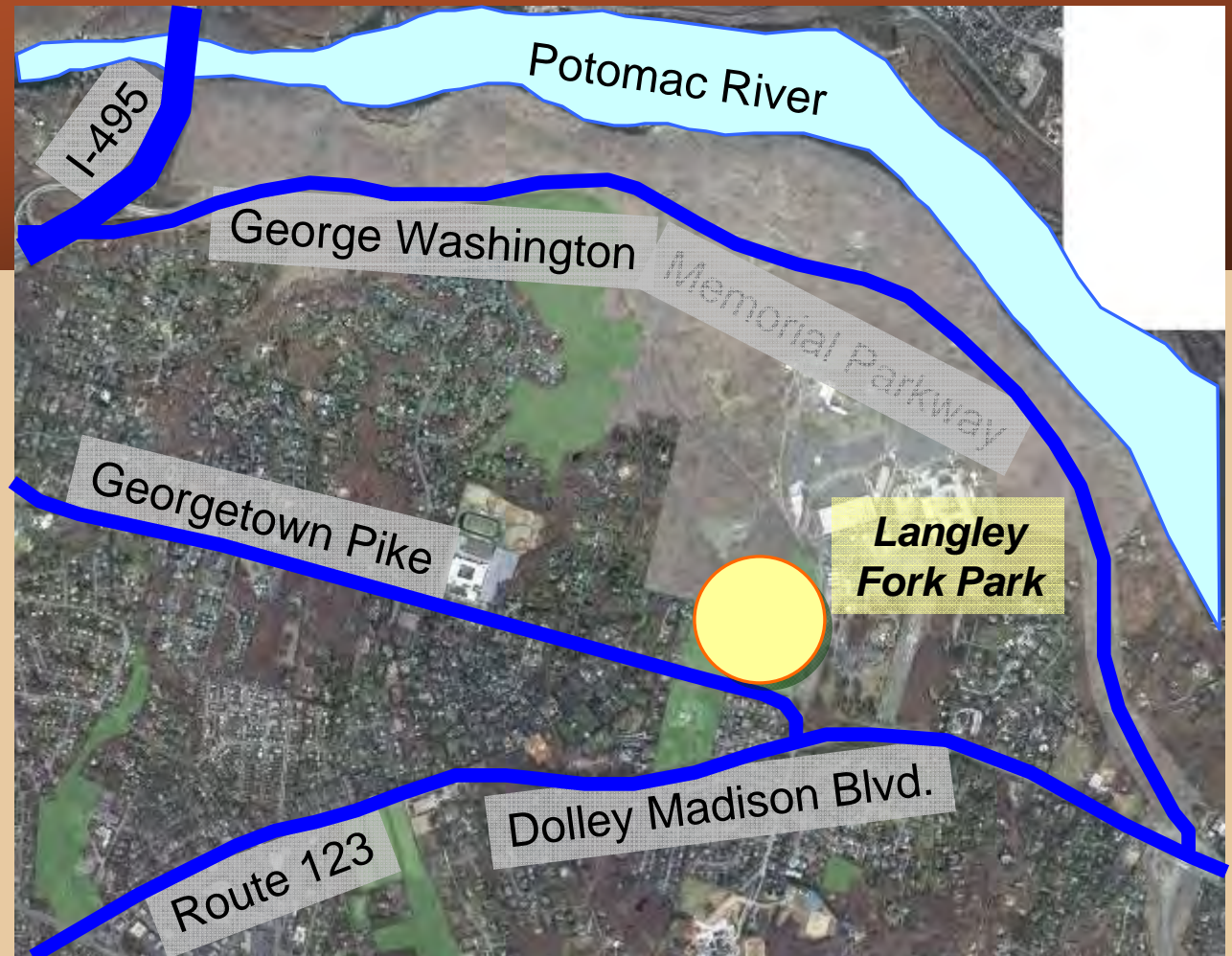


Fairfax County Park Authority

Langley Fork Park



Vicinity Map



Fairfax County Park Authority

Langley Fork Park

Vicinity Map

Langley Fork Park, however, is actually park of the larger George Washington Memorial Parkway, owned by the federal government as administered through the National Park Service.

Fairfax County Park Authority maintains the park and schedules the usage of the fields through the provision of a Special Use Permit with the National Park Service.



Fairfax County Park Authority

Langley Fork Park

Property Background

1937 Aerial Image

Historically, much of the property's usage through the 1800's and early 1900's centered around the region's agriculture, as is typified by this 1937 aerial image of the property. The patchwork pattern of local farms is clearly visible.

Much of our research and survey work will be to identify archaeological resources on the property and, if found, seek the best means to protect or preserve such features.



Fairfax County Park Authority

Langley Fork Park

Property Background

1953 Aerial Image

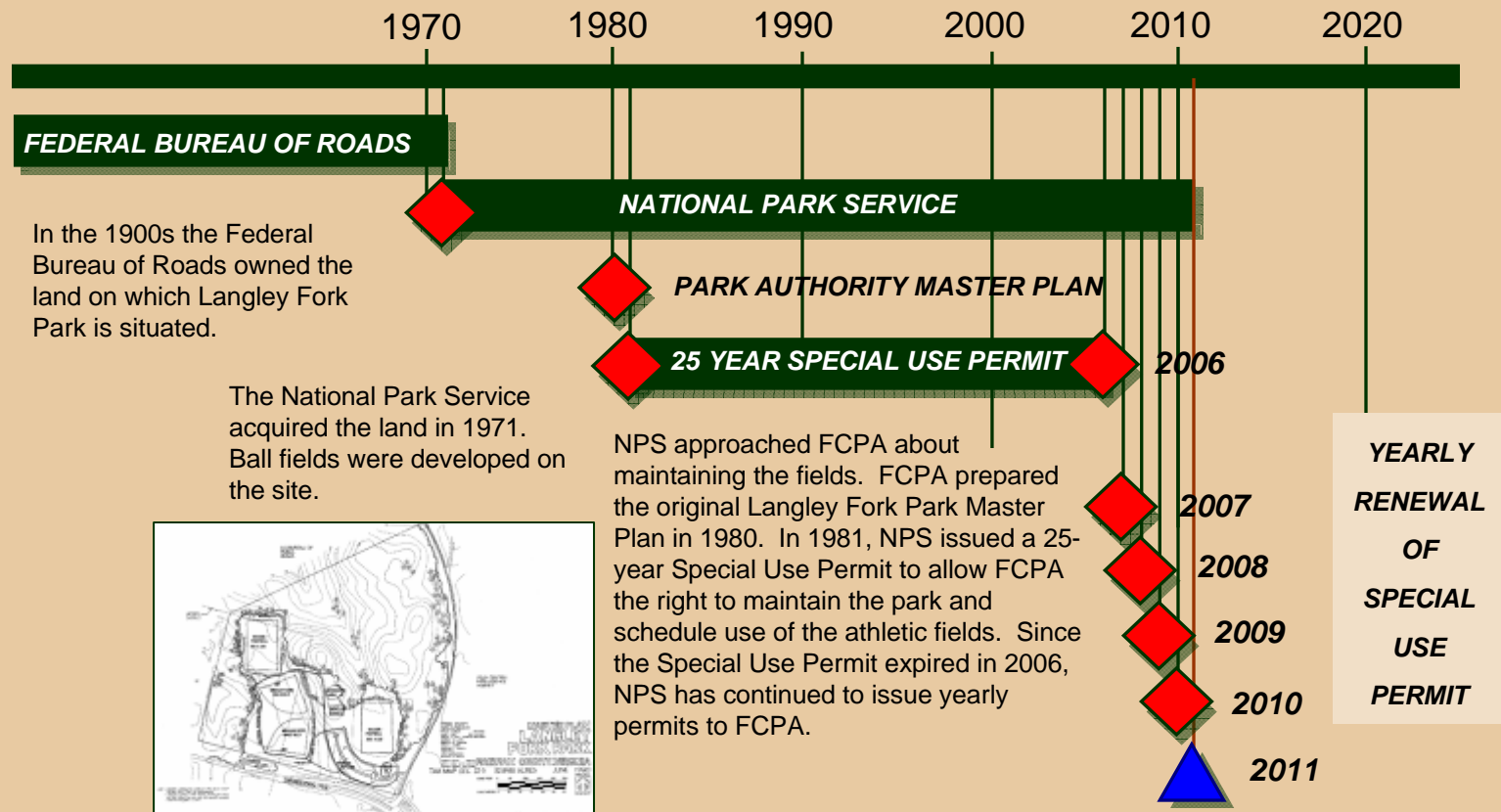
Looking at this 1953 aerial image, the rural/agricultural use of the land is still evident, although there is noticeable infill of tree cover infilling previous field areas.



Fairfax County Park Authority

Langley Fork Park

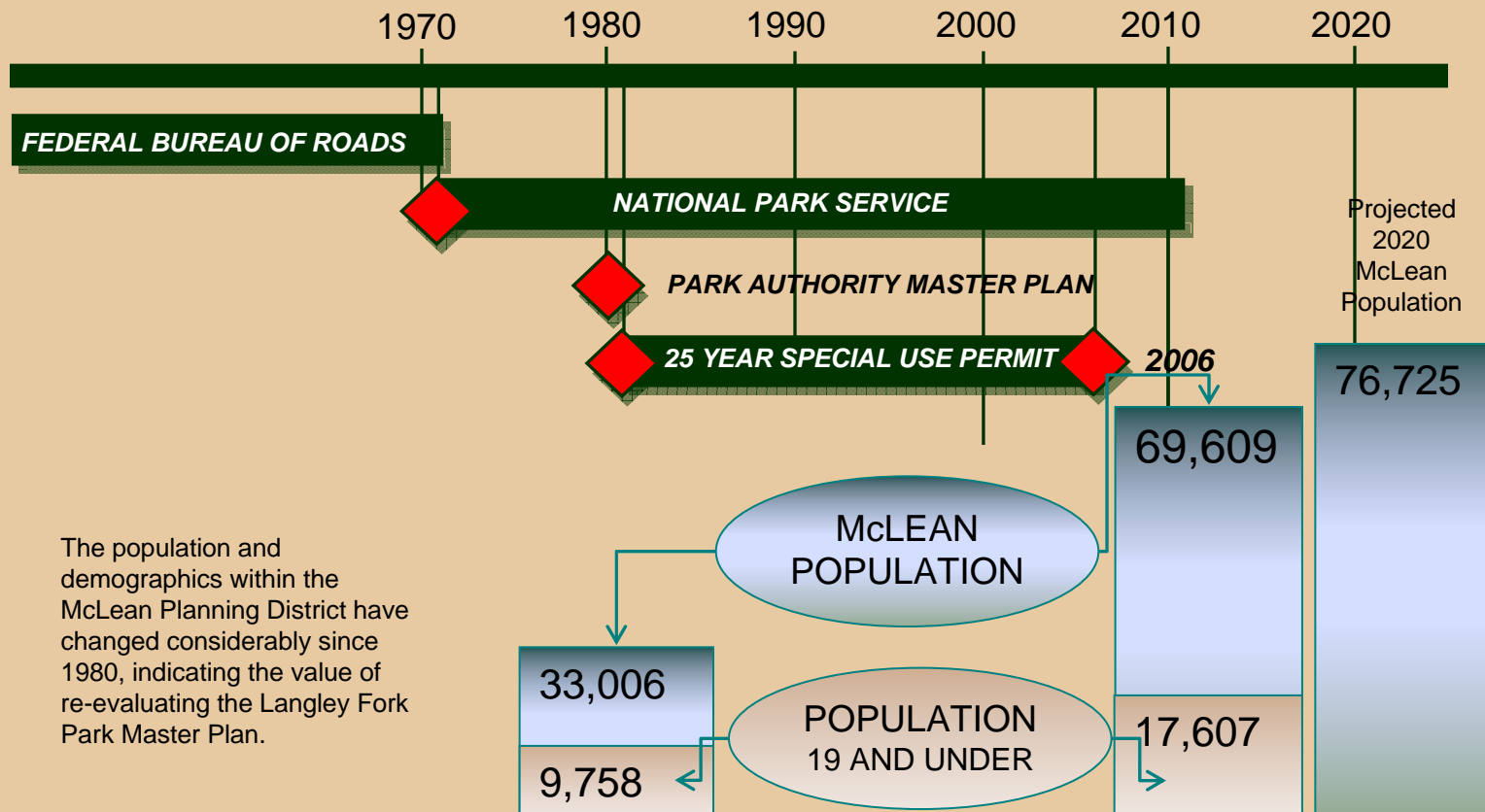
Property Background



Fairfax County Park Authority

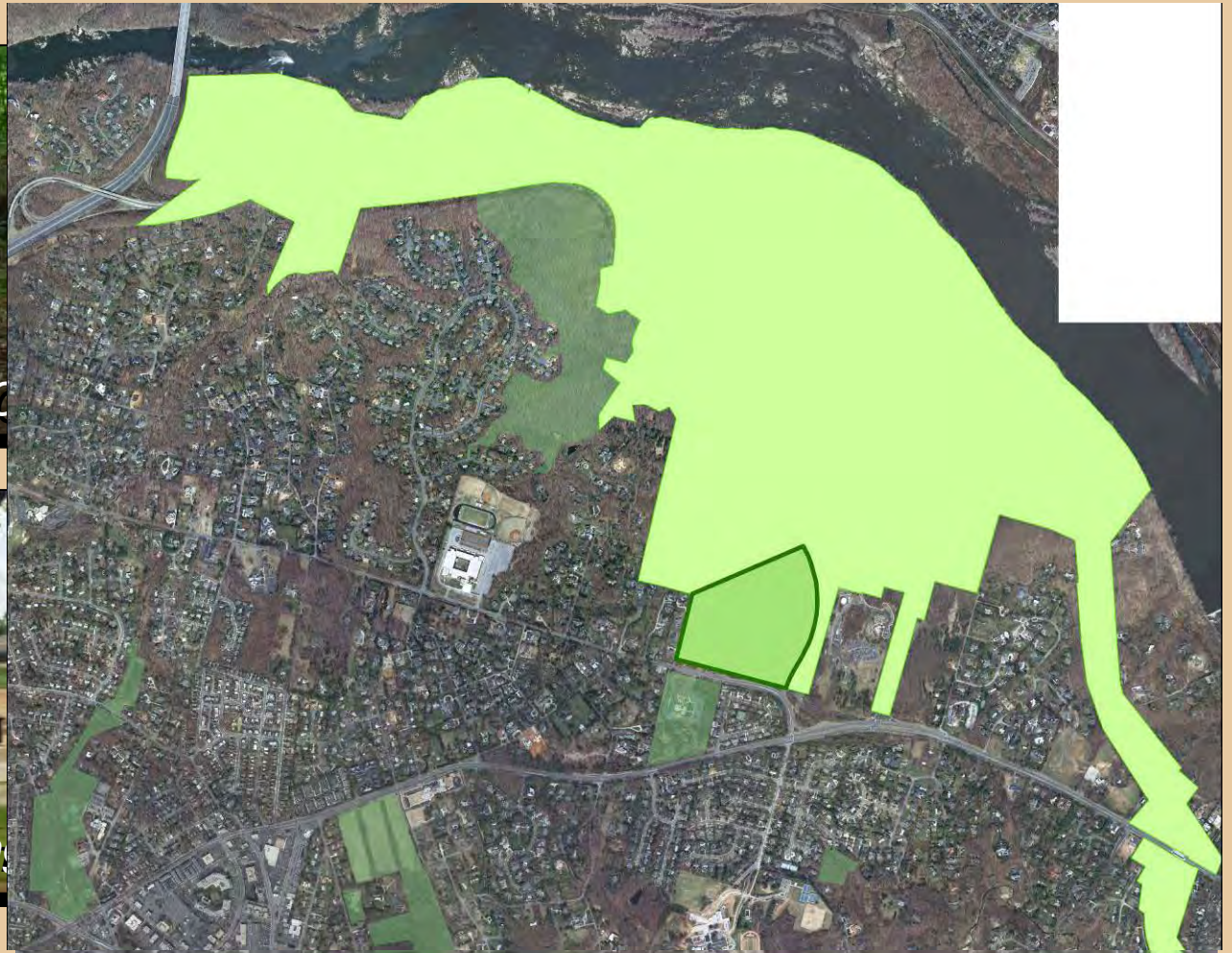
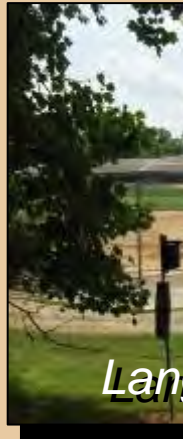
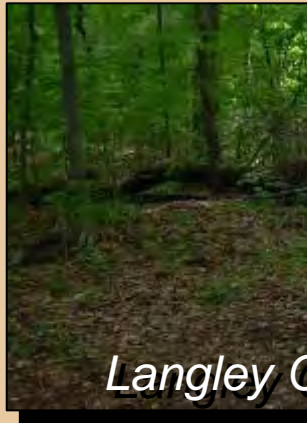
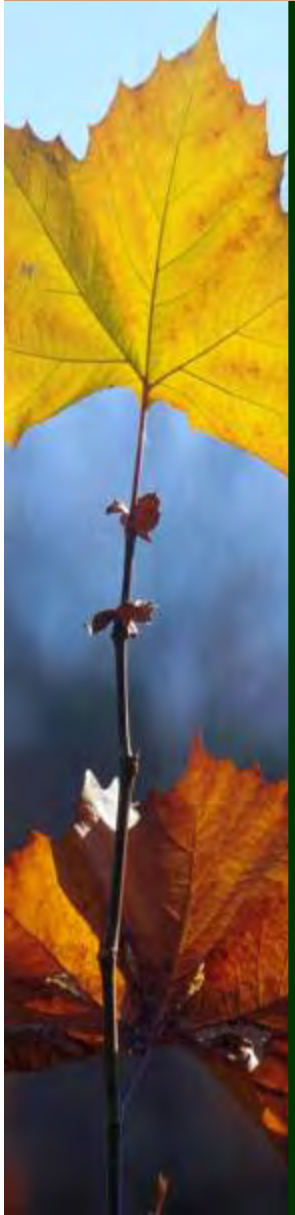
Langley Fork Park

Property Background



Fairfax County Park Authority

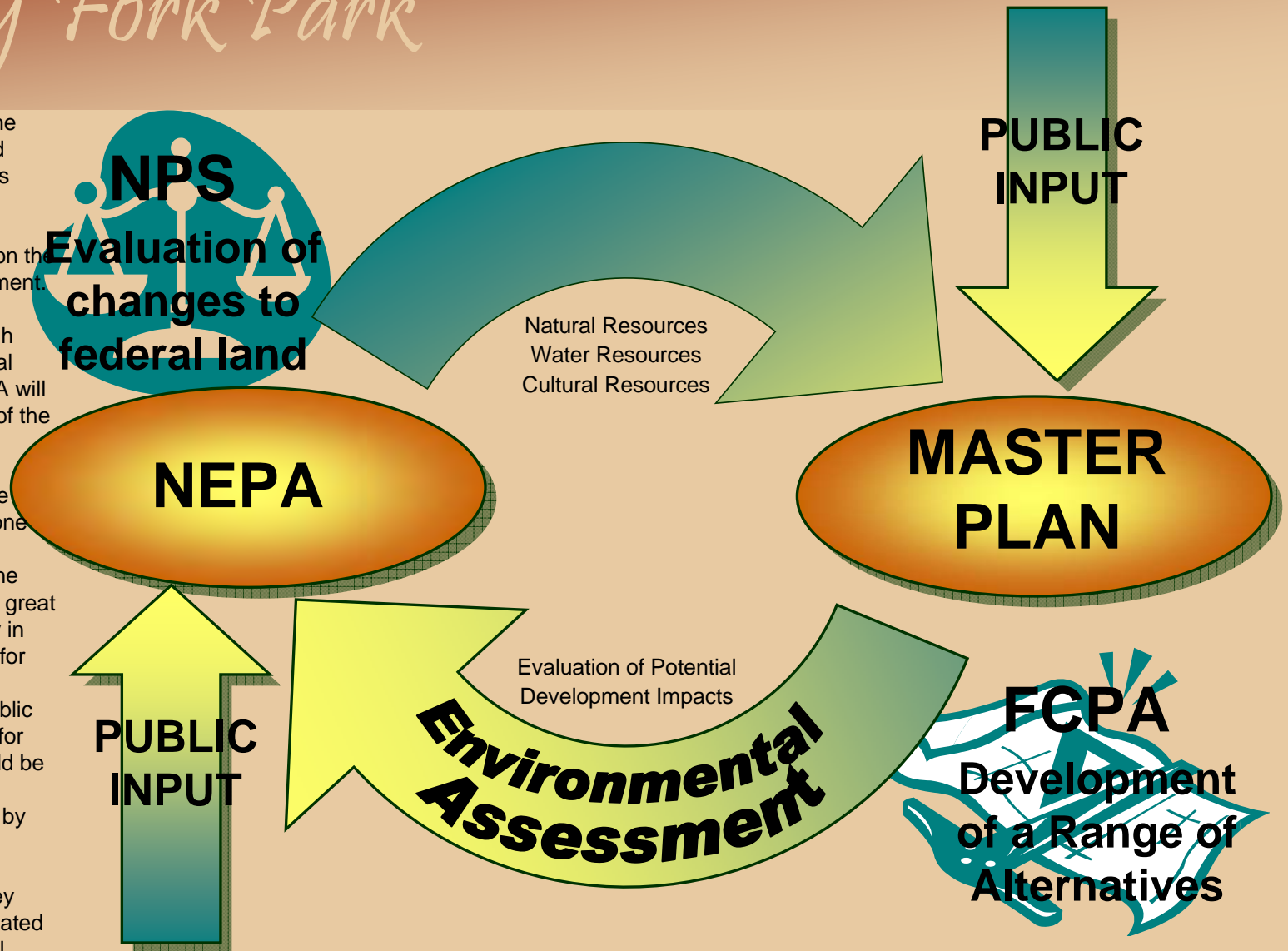
Langley Fork Park



Fairfax County Park Authority

Langley Fork Park

With the consideration for the potential land exchange and direction from NEPA, NPS is responsible to evaluate the possible impacts of federal actions related to parkland on the natural and human environment. In this case, that evaluation process is supported through performing an Environmental Assessment, or EA. The EA will provide a detailed analysis of the Langley Fork site to identify natural, water, and cultural resources. Evaluation of the Langley Oaks site will be done as well. The information gathered in preparation of the EA, however, will also be of great benefit to the Park Authority in developing the master plan for Langley Fork Park. That research, combined with public input, will establish a guide for how Langley Fork Park could be developed in the future. The plan that is determined by Park Authority and the community to be the most appropriate usage of Langley Fork Park will then be evaluated as part of the Environmental Assessment process and, ultimately, feed back into the decision by NPS whether the land exchange is in their best interest..

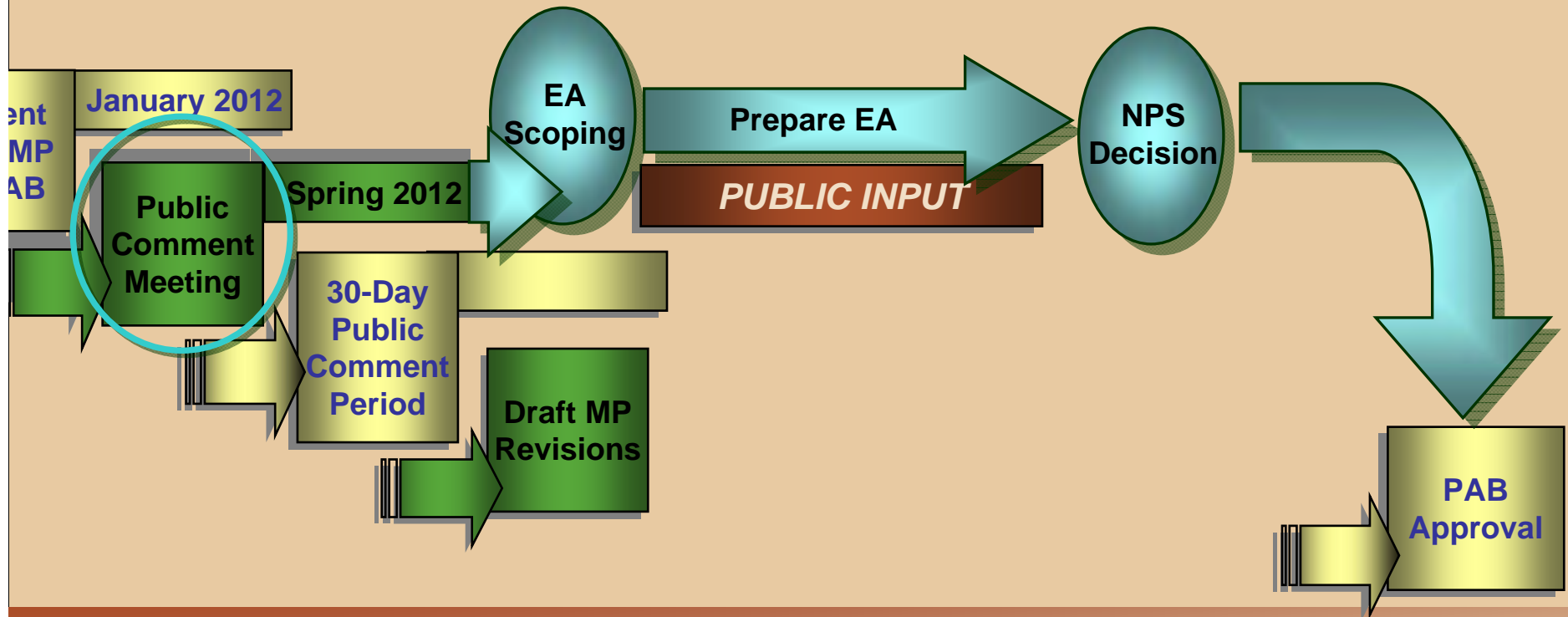


Fairfax County Park Authority

Langley Fork Park

The Park Authority's master plan process timeline will be modified somewhat to work in coordination with the EA process. Another meeting will be held to present the draft master plan and to more fully inform you about the Environmental Assessment process in a timely manner for you to be involved in the process

The Master Plan Timeline



Fairfax County Park Authority

Langley Fork Park

Property Background

2009 Aerial Image



It can be seen that the existing park has been developed in conformance with the original master plan.

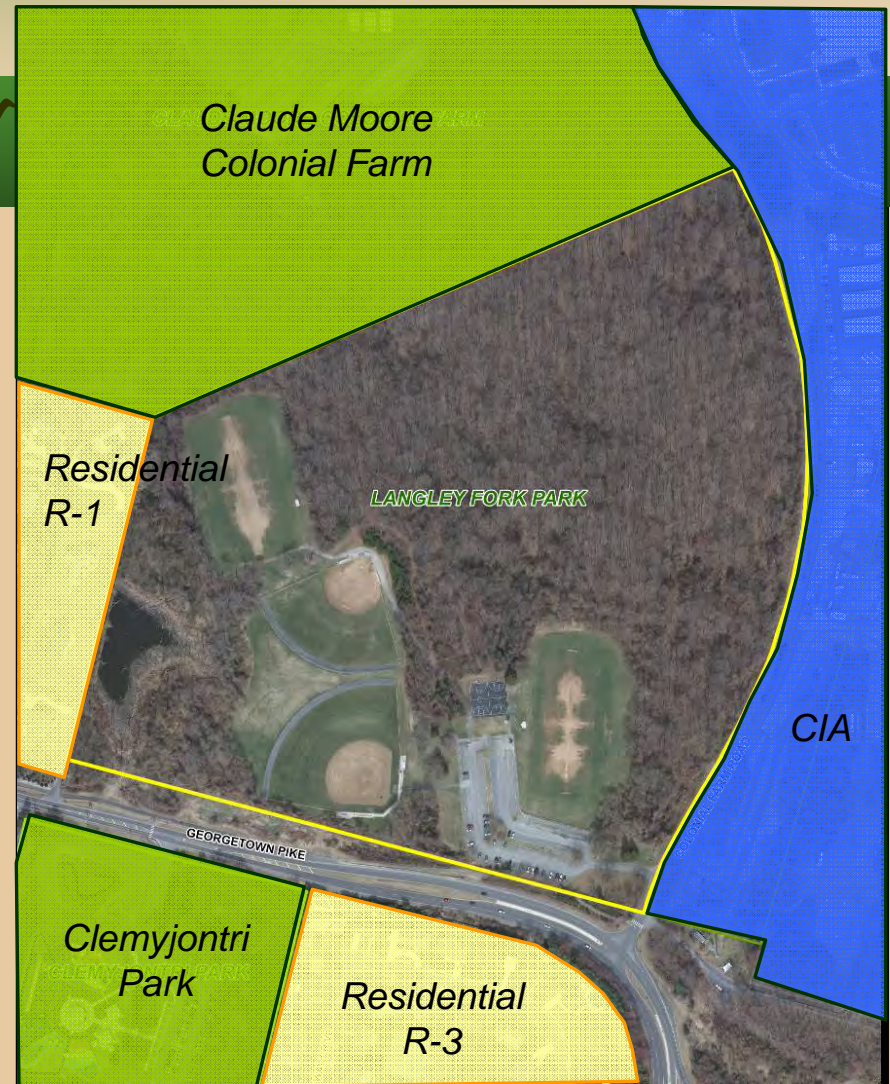


Fairfax County Park Authority

Langley Fork Park

Property Background

2009 Aerial Image



Fairfax County Park Authority

Langley Fork Park

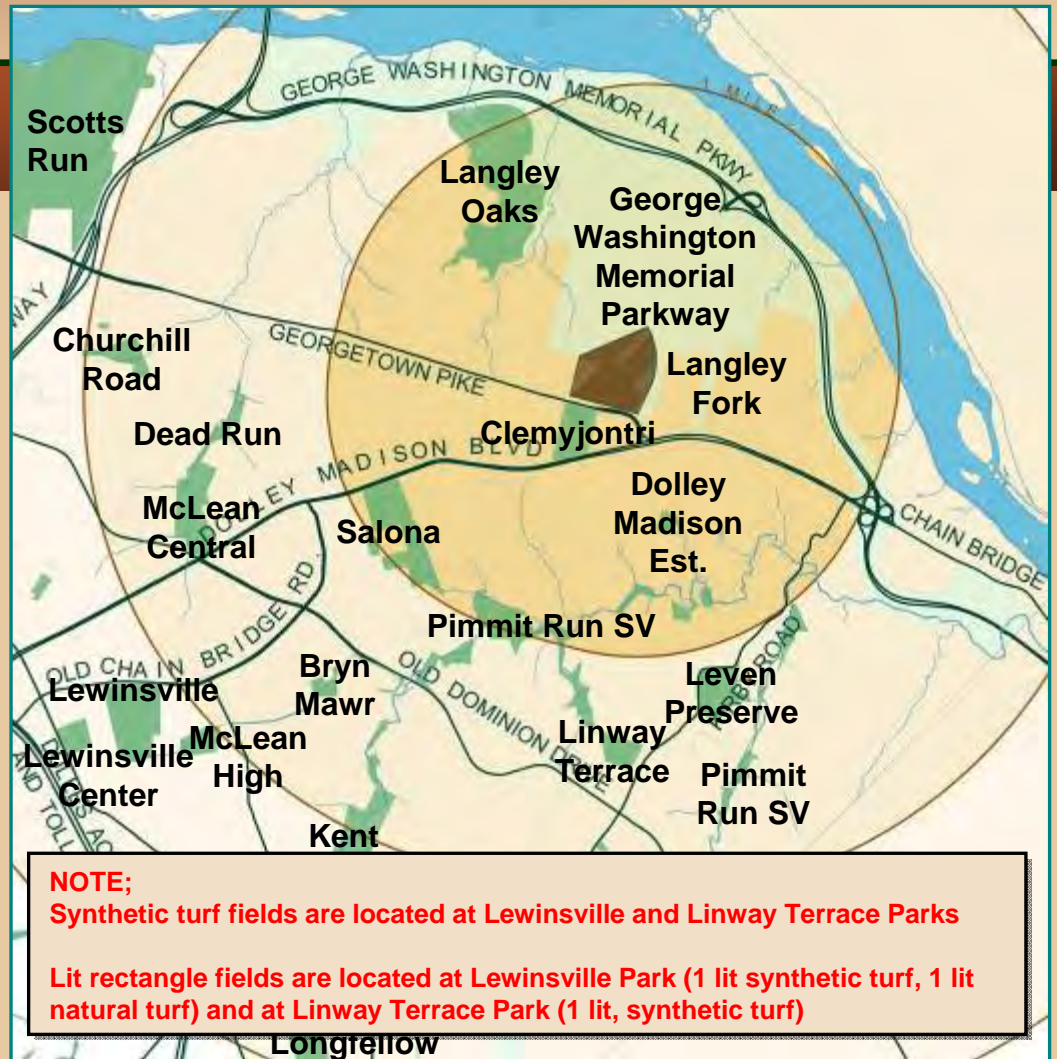
Area Parks

Within 3 miles of park:

● 32 Parks

- Trails
- Picnic areas
- Playgrounds
- Historic features

- 8 rectangle fields
- 2 are synthetic turf
- 3 have lighting
- 8 diamond fields
- 21 tennis courts
- 10 basketball courts



Fairfax County Park Authority

Langley Fork Park

Area Schools

Schools within 1 mile

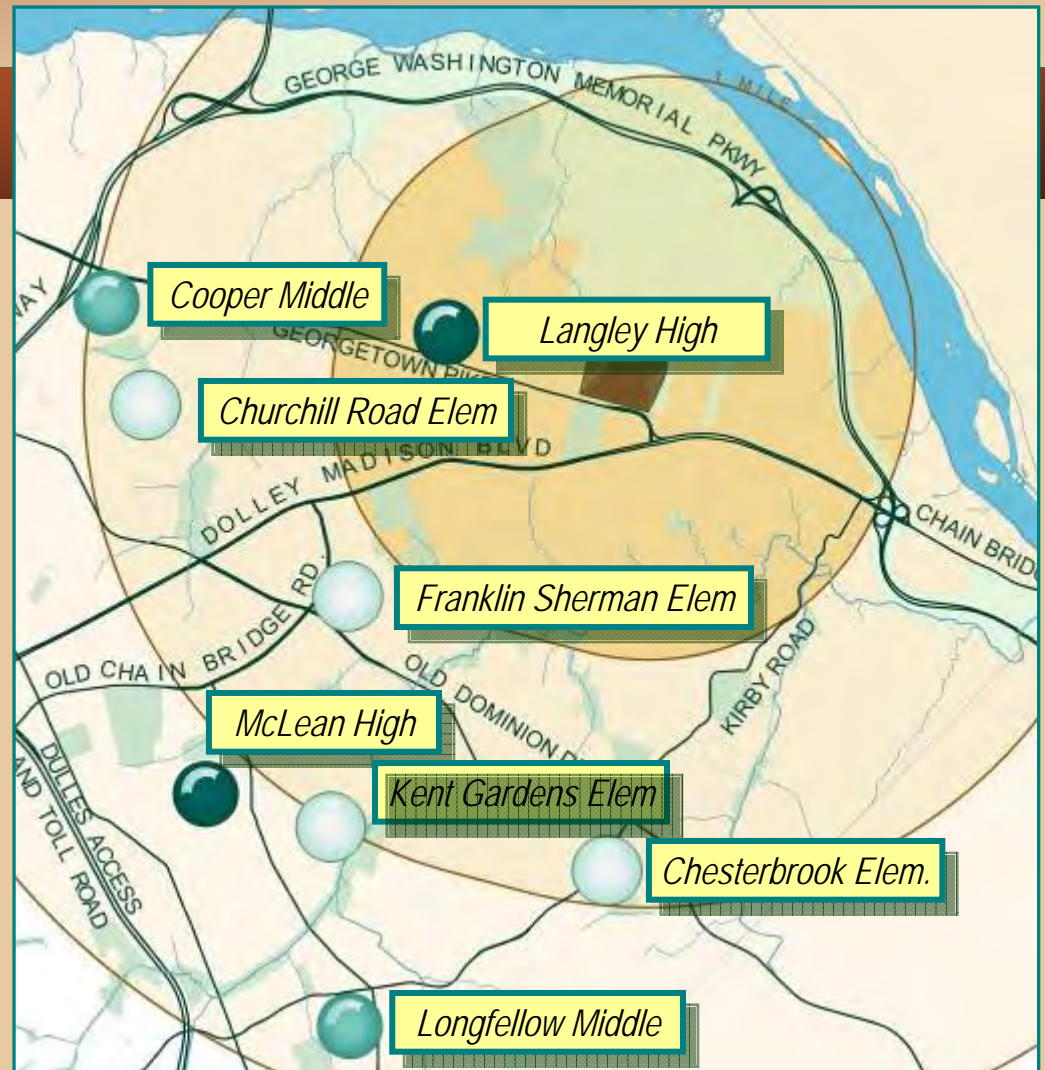
- Langley High

Schools within 2 miles

- Cooper Middle
- Churchill Road Elem
- Franklin Sherman Elem
- Chesterbrook Elem

Schools within 3 miles

- McLean High
- Kent Gardens Elem
- Longfellow Middle



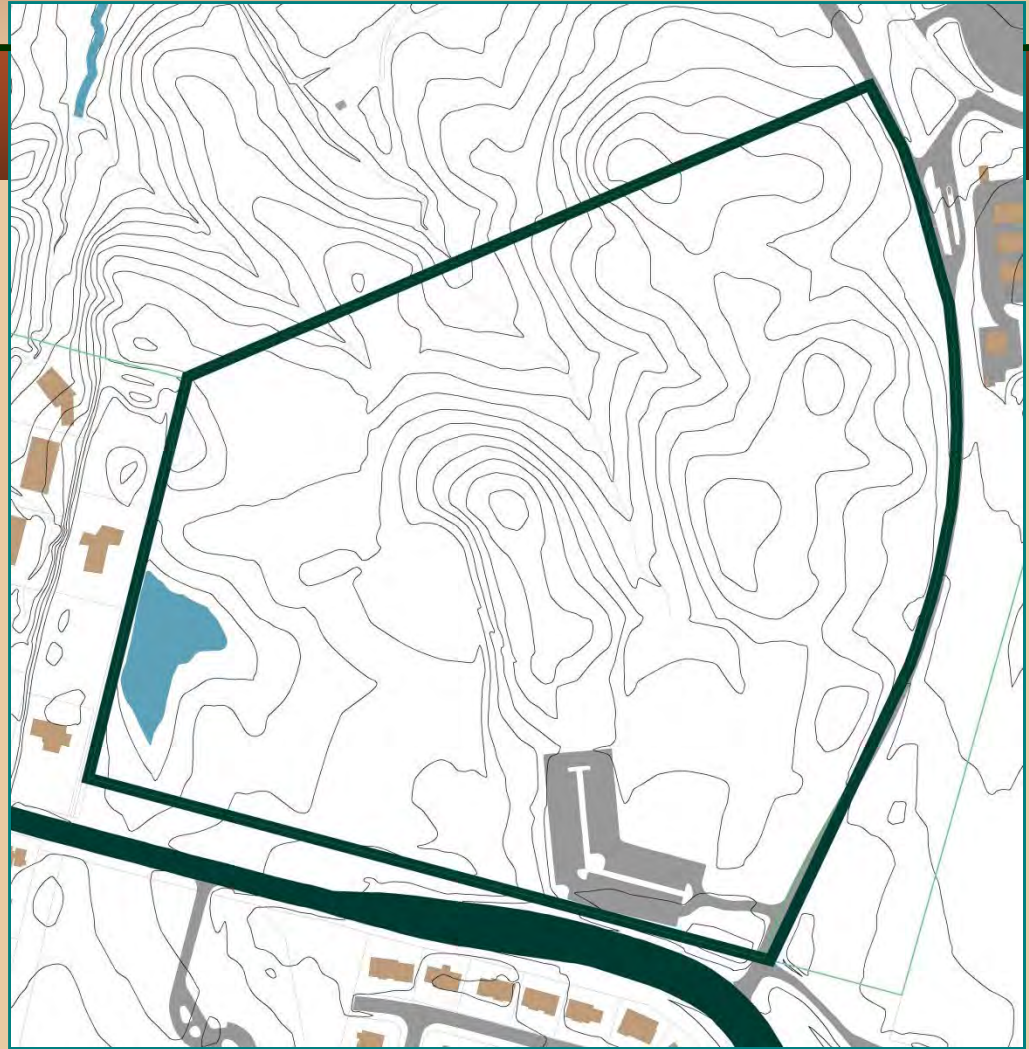
Fairfax County Park Authority

Langley Fork Park

Site Conditions

Access

- Current point of access is from Colonial Farm Road
- May need to evaluate other or additional points of access if any significant expansion is proposed

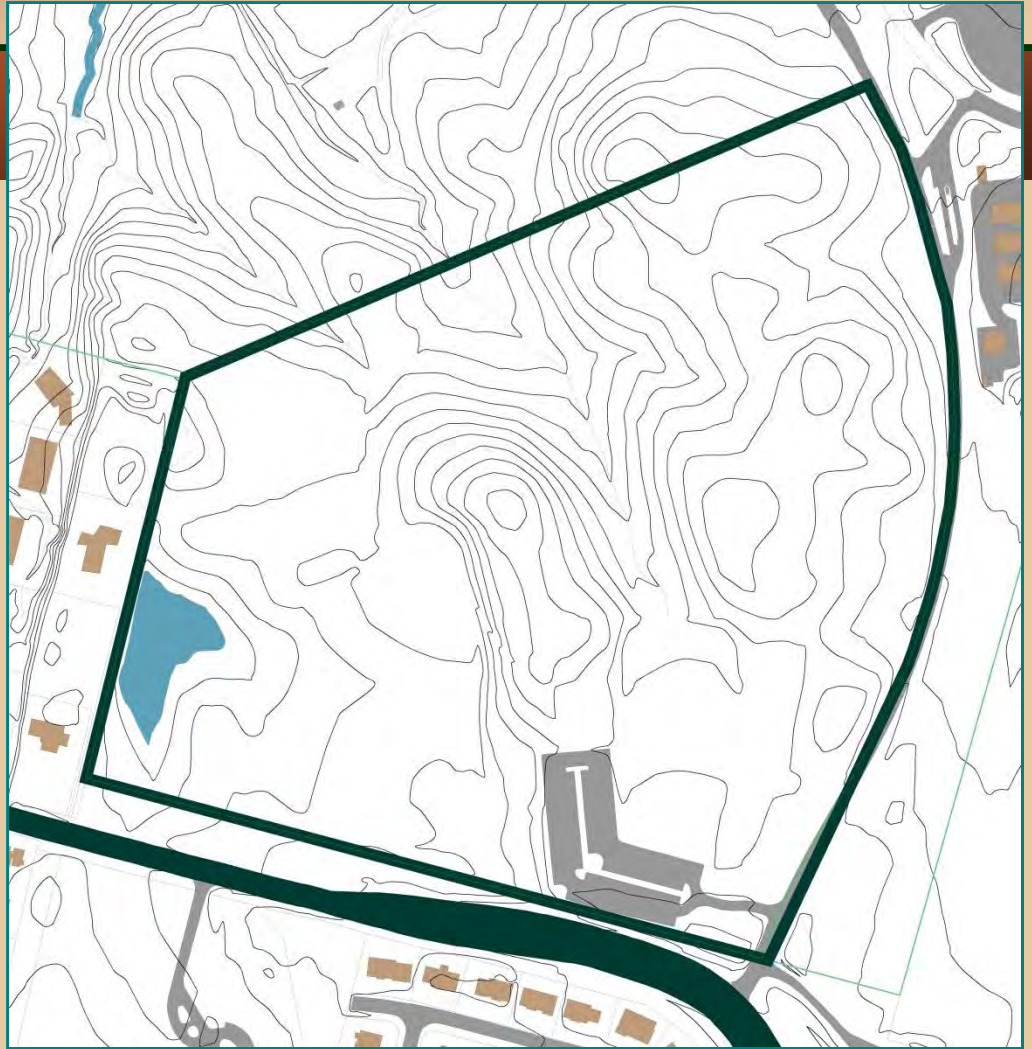


Fairfax County Park Authority

Langley Fork Park

Site Conditions

**Topography &
Drainage**



Fairfax County Park Authority

Langley Fork Park

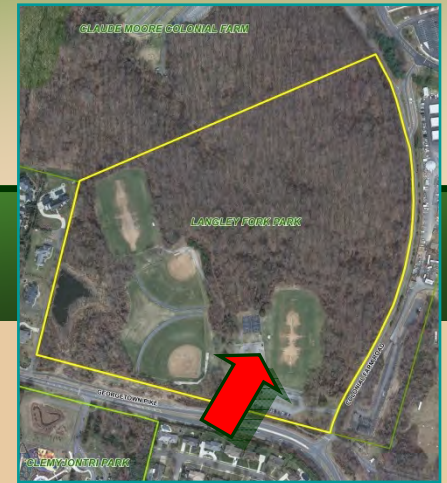
Site Photographs



Fairfax County Park Authority

Langley Fork Park

Site Photographs



Fairfax County Park Authority

Langley Fork Park

Site Photographs



Fairfax County Park Authority

Langley Fork Park

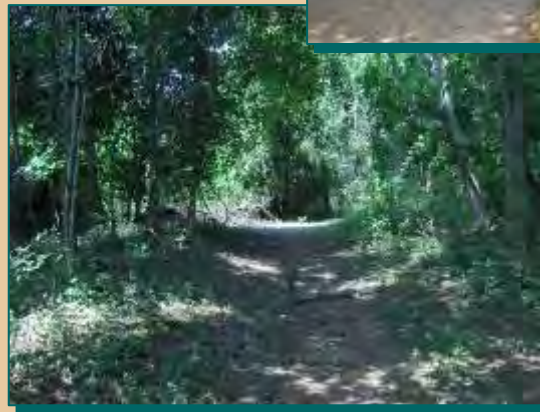
Site Photographs



Fairfax County Park Authority

Langley Fork Park

Site Photographs



Fairfax County Park Authority

Langley Fork Park

Park Classification System

Park Classification System

- *Provides a general framework*
- *Intended to guide open space and public facilities planning*

Park Classification provides an indication of:

- *Appropriate uses*
- *General park size range*
- *Typical facility types*
- *General park experience*

Fairfax County Park Authority



Langley Fork Park

Park Classification System

Within this system, the Langley Fork Park is classified as a
DISTRICT PARK

DISTRICT PARK CHARACTERISTICS

- *Serve a geographic area of 3-6 miles*
- *Service area is determined by park facilities, context, and location*
- *Provides passive and active recreation facilities*
- *Generally larger than 50 acres in size*
- *Typically accommodate visits of up to a half day*
- *Often include extensive natural areas*

Fairfax County Park Authority



Langley Fork Park

Typical District Park Facilities

Facility Type		Parking
Athletic Fields	<input checked="" type="checkbox"/>	<input checked="" type="checkbox"/>
Picnic Areas	<input checked="" type="checkbox"/>	<input checked="" type="checkbox"/>
Court Sports	<input checked="" type="checkbox"/>	<input checked="" type="checkbox"/>
Trails	<input checked="" type="checkbox"/>	
Playgrounds - all ages	<input checked="" type="checkbox"/>	<input checked="" type="checkbox"/>
Open Play Areas	<input checked="" type="checkbox"/>	
Site Furnishings such as benches or bike racks	<input checked="" type="checkbox"/>	



Fairfax County Park Authority

Langley Fork Park

Specialty Uses

Establishment of Specialty Uses
requires sponsorship

Facility Type	Parking
Thematic gardens (require expert maintenance and care)	<input checked="" type="checkbox"/>
Garden plots (needs water and proper sun)	<input checked="" type="checkbox"/>
Off-leash dog area	<input checked="" type="checkbox"/>
Neighborhood skate spot	<input checked="" type="checkbox"/>



Fairfax County Park Authority

Langley Fork Park

Public Comment Period



*What is your vision for
Langley Fork Park?*

*What issues should be
considered?*

Fairfax County Park Authority

Denigalee Park

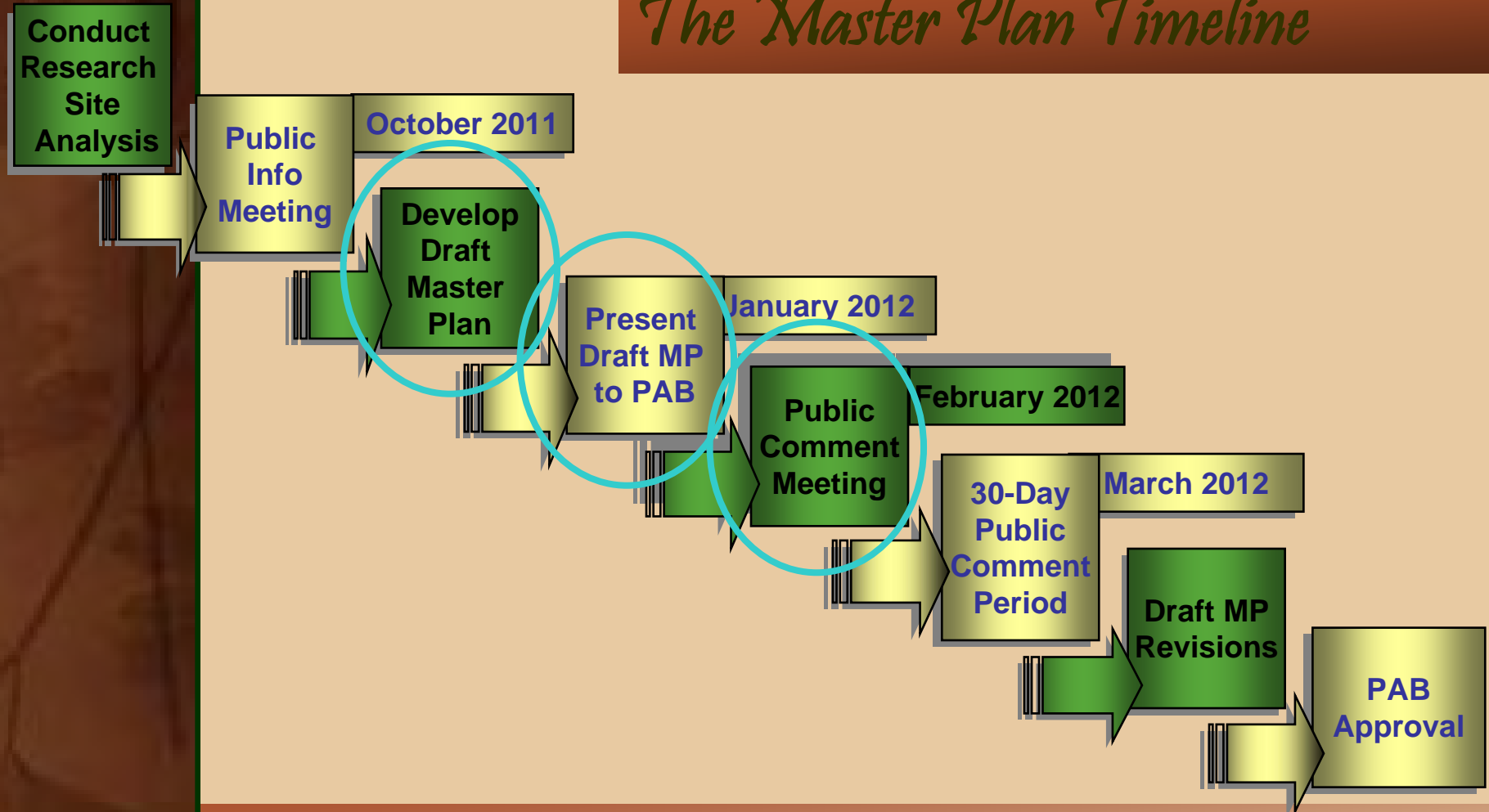
The Master Plan Process

Where do we go from here?

Fairfax County Park Authority

Langley Fork Park

The Master Plan Timeline



Fairfax County Park Authority

Langley Fork Park

Contact Information

*This information is provided
on the handout!*



parkmail@fairfaxcounty.gov



Gayle Hooper, Project Manager
Planning & Development Division, FCPA
12055 Government Center Parkway, Suite 406
Fairfax, Virginia 22035



703-324-8725

Please visit the project website:

<http://www.fairfaxcounty.gov/parks/plandev/langleyfork.htm>

Fairfax County Park Authority