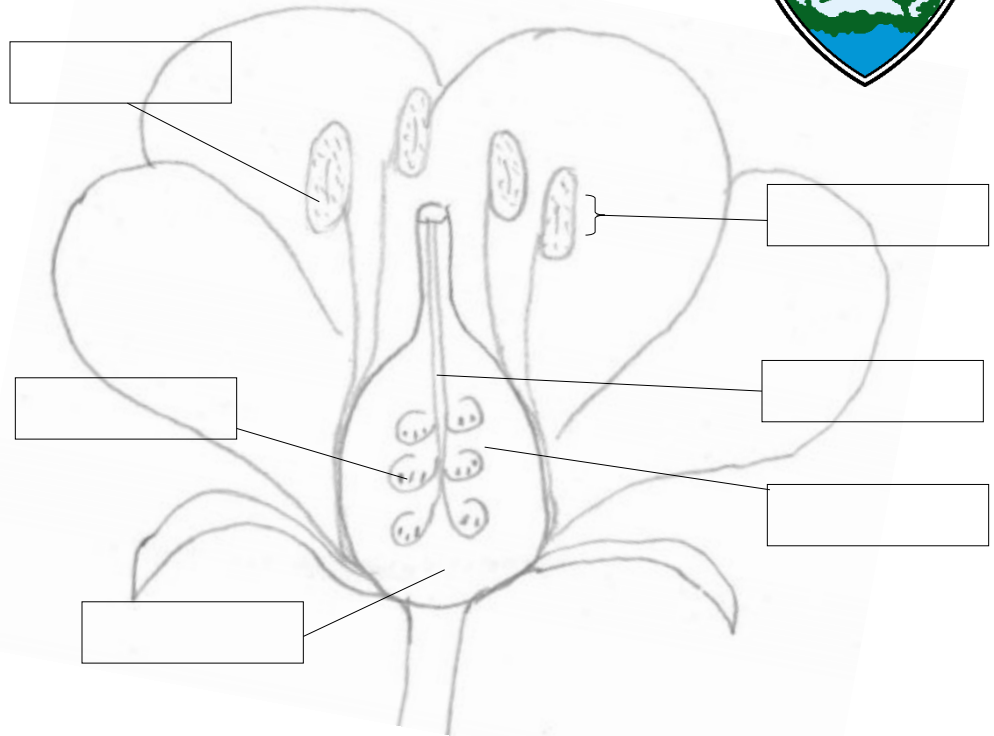


PARTS OF A FLOWER



Identify these flower parts in the diagram to the right.

Pollen Grains
Pollen Tube
Ovule
Eggs
Anther
Ovary



Fill in the blanks with the parts of the flower you identify above.

The _____ come off the _____ and go down the _____ into the _____. The _____ must enter the _____ in order to pollinate the _____ so that it can become a seed.

Can you identify these additional flower parts?

Stamen
Sepal
Pistil

Carpel
Style
Filament

Stigma
Pedicel

Additional Learning Opportunities:

Use these questions to learn more about flowering plants, their life cycle and the creation of seeds. Go outside and find flowers to help you answer these questions. Keep a photo journal or list of what you find.

- What kinds of plants make flowers?
- What colors can flowers be?
- Do all flowers smell?
- Will pollen stick to my finger?
- Are all flowers the same inside? What is left of a flower after the petals fall off?
- What part of the plants life cycle is the seed created?
- Do all plants reproduce using flowers? Do all plants reproduce using seeds?

For more ideas in at-home exploration, visit www.fairfaxcounty.gov/parks/virtual

ANSWER KEY

Identify these flower parts in the diagram to the right.

Pollen Grains

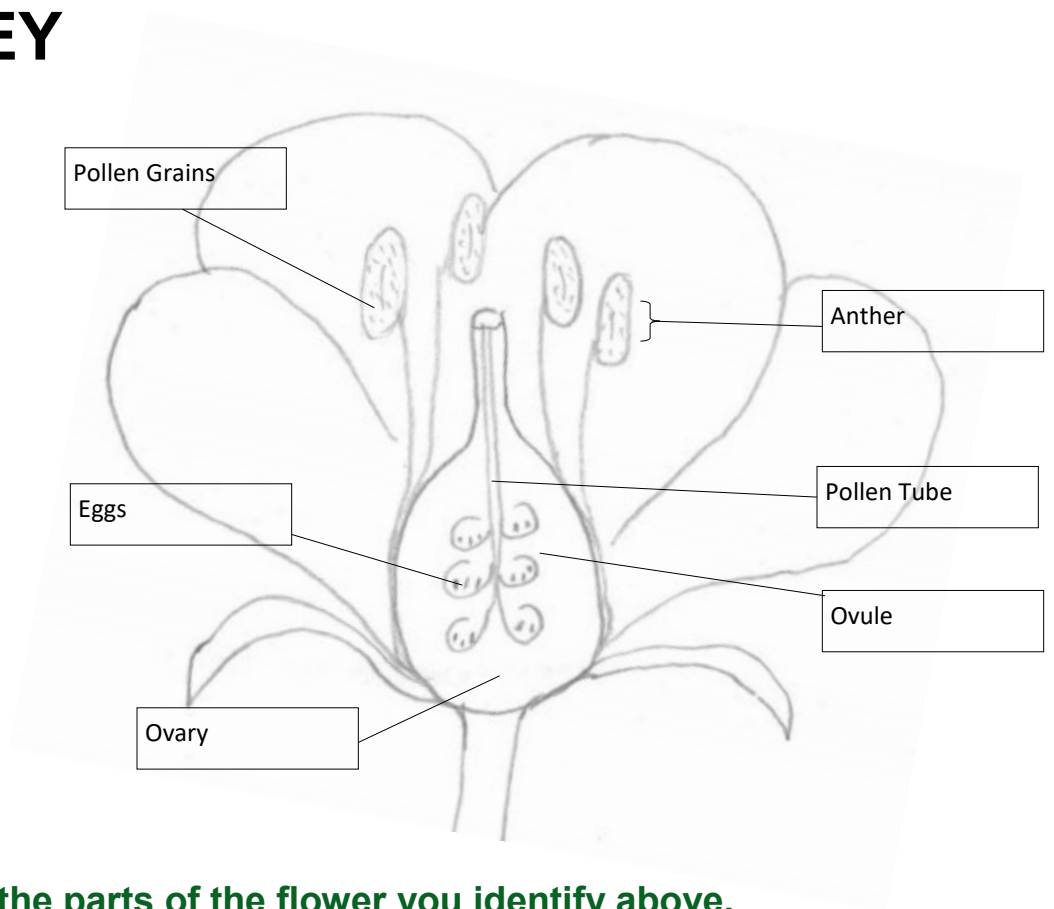
Pollen Tube

Ovule

Eggs

Anther

Ovary



Fill in the blanks with the parts of the flower you identify above.

The **pollen grains** come off the **anther** and go down the **pollen tube** into the **ovary**. The **pollen grains** must enter the **ovule** in order to pollinate the **eggs** so that it can become a seed.