

Franconia Park Master Plan Revision



PUBLIC INFORMATION MEETING

July 16, 2013

Tonight's Agenda

Introductions: Sandy Stallman, Manager,
Park Planning Branch, FCPA

Remarks: Marcus Wadsworth, Staff Assistant,
Lee District Supervisors Office

Presentation: Andy Galusha, Planner,
Park Planning Branch, FCPA

Discussion Session: Moderated by Sandy Stallman



Park Authority Mission

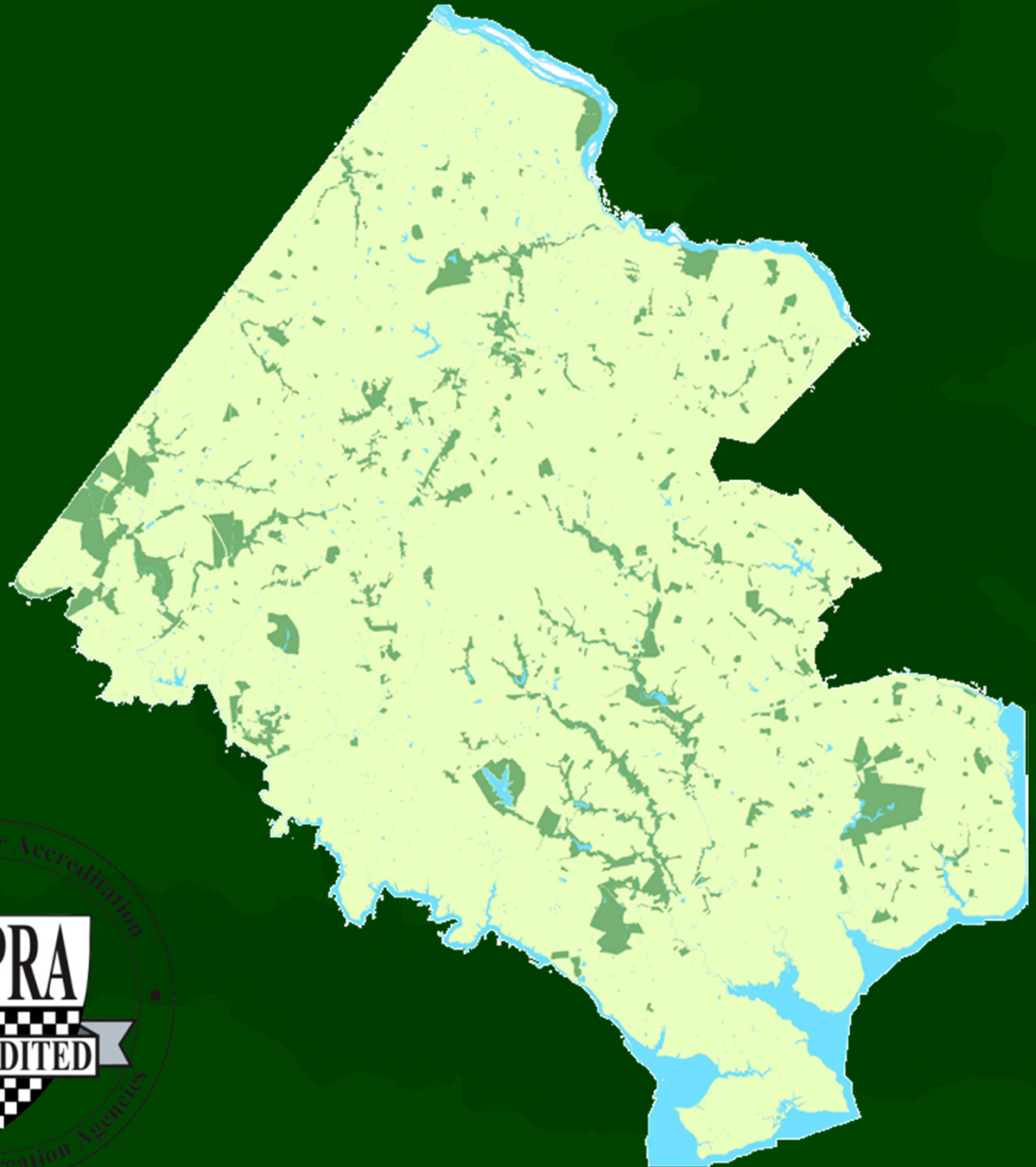
Enhance Citizen's Quality of Life Through:

-  **Natural & Cultural Resource Stewardship**
-  **Recreational Opportunities**
-  **Quality Facilities & Services**



Fast Facts about FCPA

- 12 - Member Board
- 23,300+ Acres of Parkland
- 421 Parks
- Accredited
- 3-Time Gold Medal Winner



Park Master Plans in General

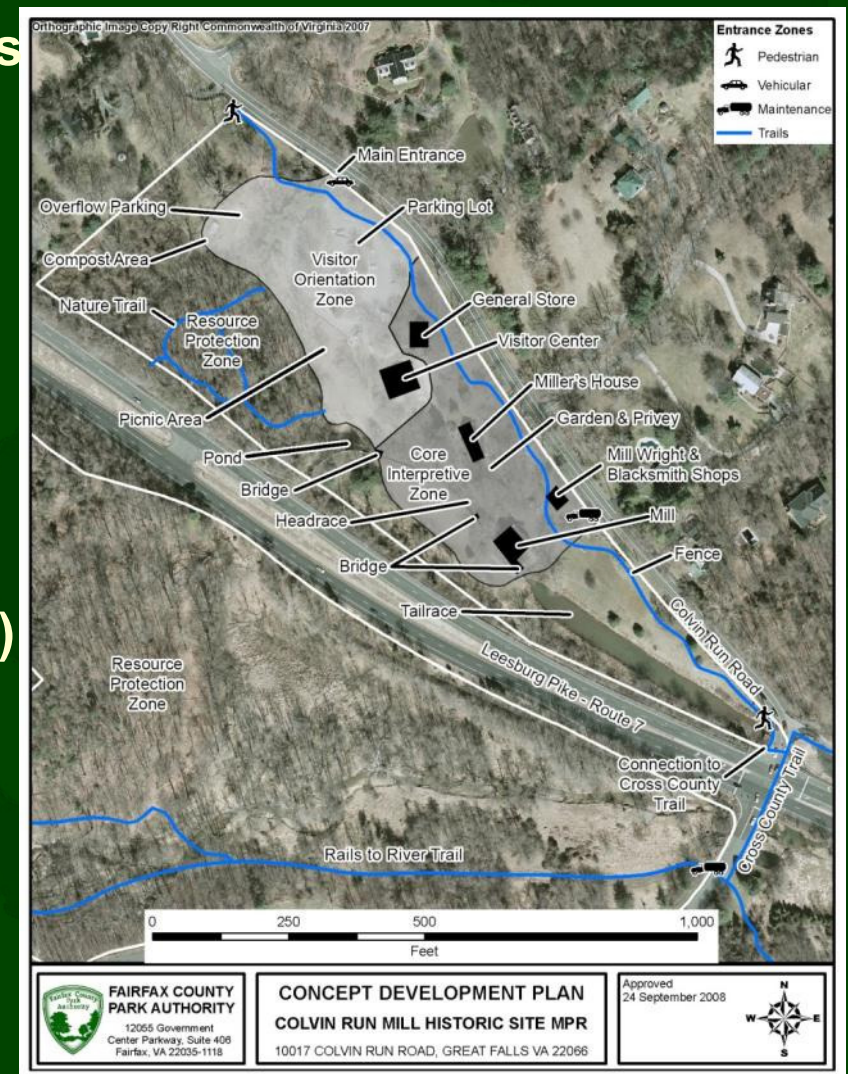
- Written Report
- Park Purpose & Classification
- Existing Conditions & Constraints
- Visitor Experience
- Planned Park Uses and Facilities
- Design Concerns



Park Master Plans in General

- Written Report
 - Park Purpose & Classification
 - Existing Conditions & Constraints
 - Visitor Experience
 - Planned Park Uses and Facilities
 - Design Concerns

- Conceptual Development Plan (CDP)
 - Conceptual Site Layout
 - General Location of Facilities
 - General Location of Use Areas
 - Not Engineered Site Plan

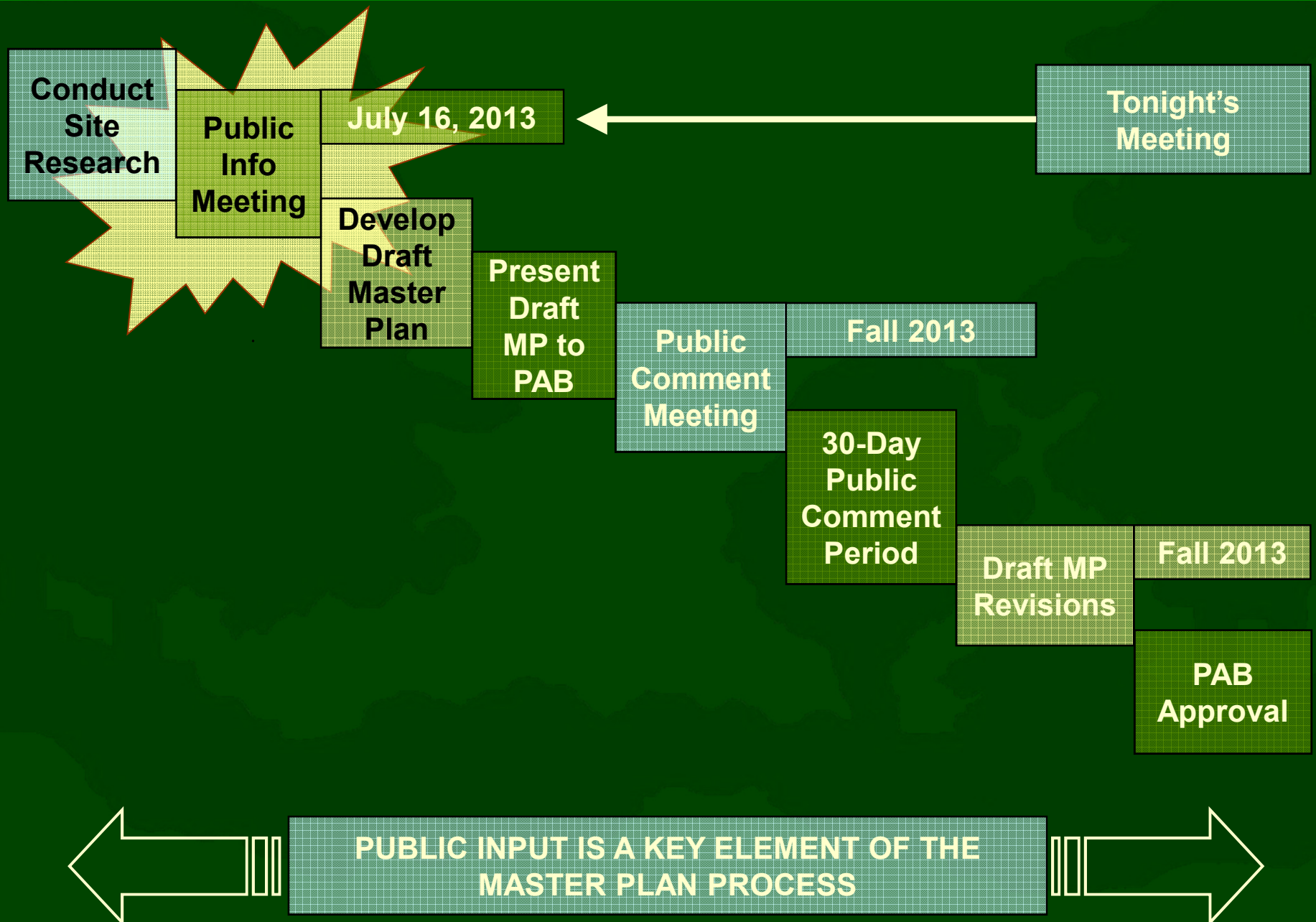


Staff Resources

-  **Site Staff**
-  **Archaeologists**
-  **Landscape Architects**
-  **Planners**
-  **Natural Resource Specialists**
-  **Operational Specialists**
-  **Recreation Specialists**
-  **Park Development Specialists**



Park Master Plan Time Line



Park Classification System



District Park



Diverse experiences & activities



Larger number of facilities



Lighted facilities



Longer hours & more users



Visit of half day +



50 + Acres



Serve 3 to 6 miles



Location of Franconia Park

- 🛡️ I-495
- 🛡️ I-95
- 🛡️ Franconia Road
- 🛡️ Thomas Drive
- 🛡️ Bowie Drive
- 🛡️ Willowfield Way



Nearby Parks

 **Backlick Stream Valley**

 **Lee High**

 **Monticello Woods**

 **Trailside**



Site History



Early History: Native American



Site History



Early History:

Native American



1800s:

Farmland



Site History

- Early History:
Native American
- 1800s:
Farmland
- 1937:
Farming Ceased



Site History

- Early History:
Native American
- 1800s:
Farmland
- 1937:
Farming Ceased
- Late 50s



Site History

- Early History:
Native American
- 1800s:
Farmland
- 1937:
Farming Ceased
- Late 50s – 60s:
Beltway Staging



Site History

- Early History:
Native American
- 1800s:
Farmland
- 1937:
Farming Ceased
- Late 50s – 60s:
Beltway Staging
- 1970s:
Park Authority
Acquired

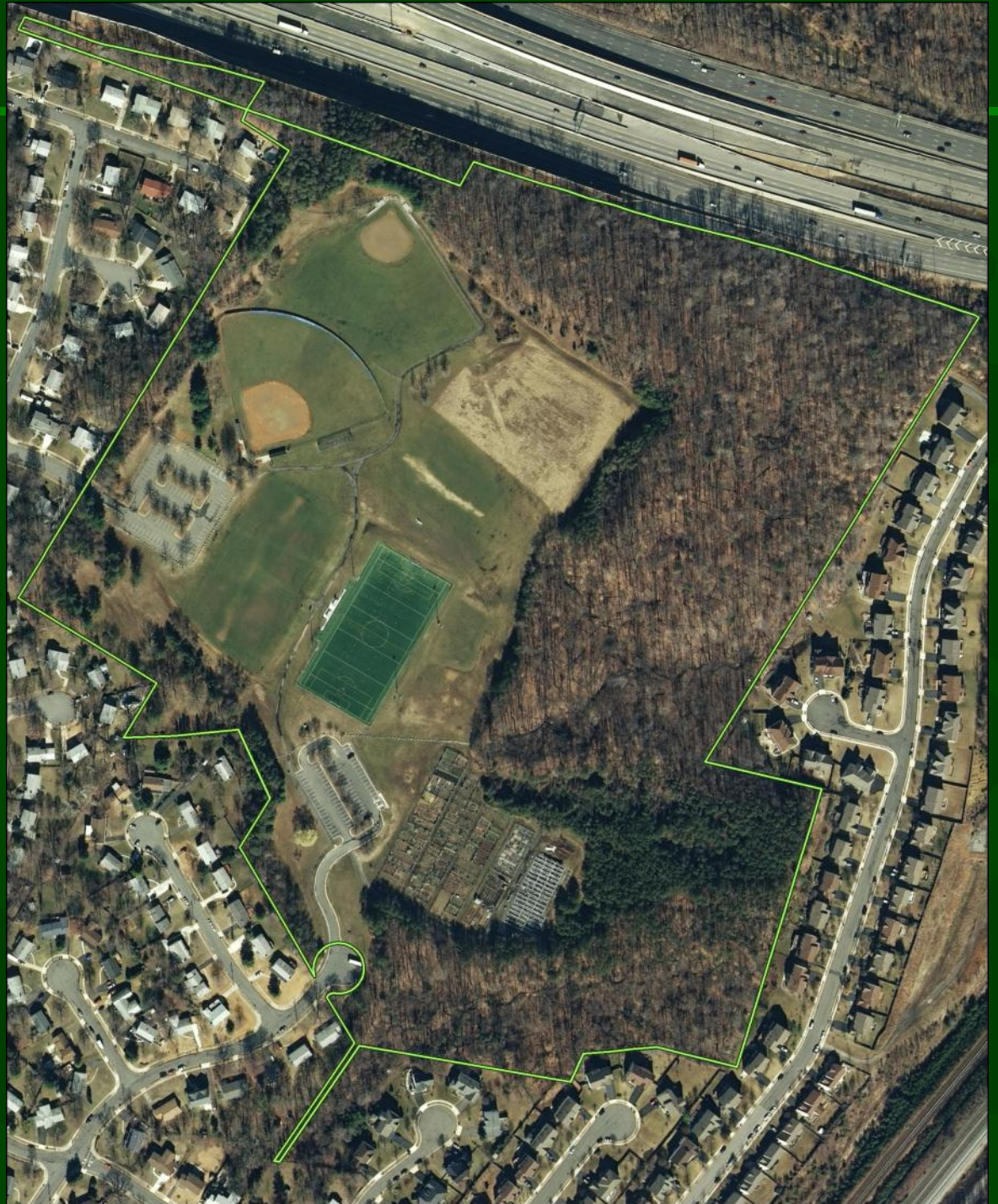


Site History

- Early History:
Native American
- 1800s:
Farmland
- 1937:
Farming Ceased
- Late 50s – 60s:
Beltway Staging
- 1970s:
Park Authority
Acquired
Master Planned
Constructed



Park Use



Park Use



Ball Fields



Park Use



Ball Fields



Garden Plots



Park Use



Ball Fields




Garden Plots

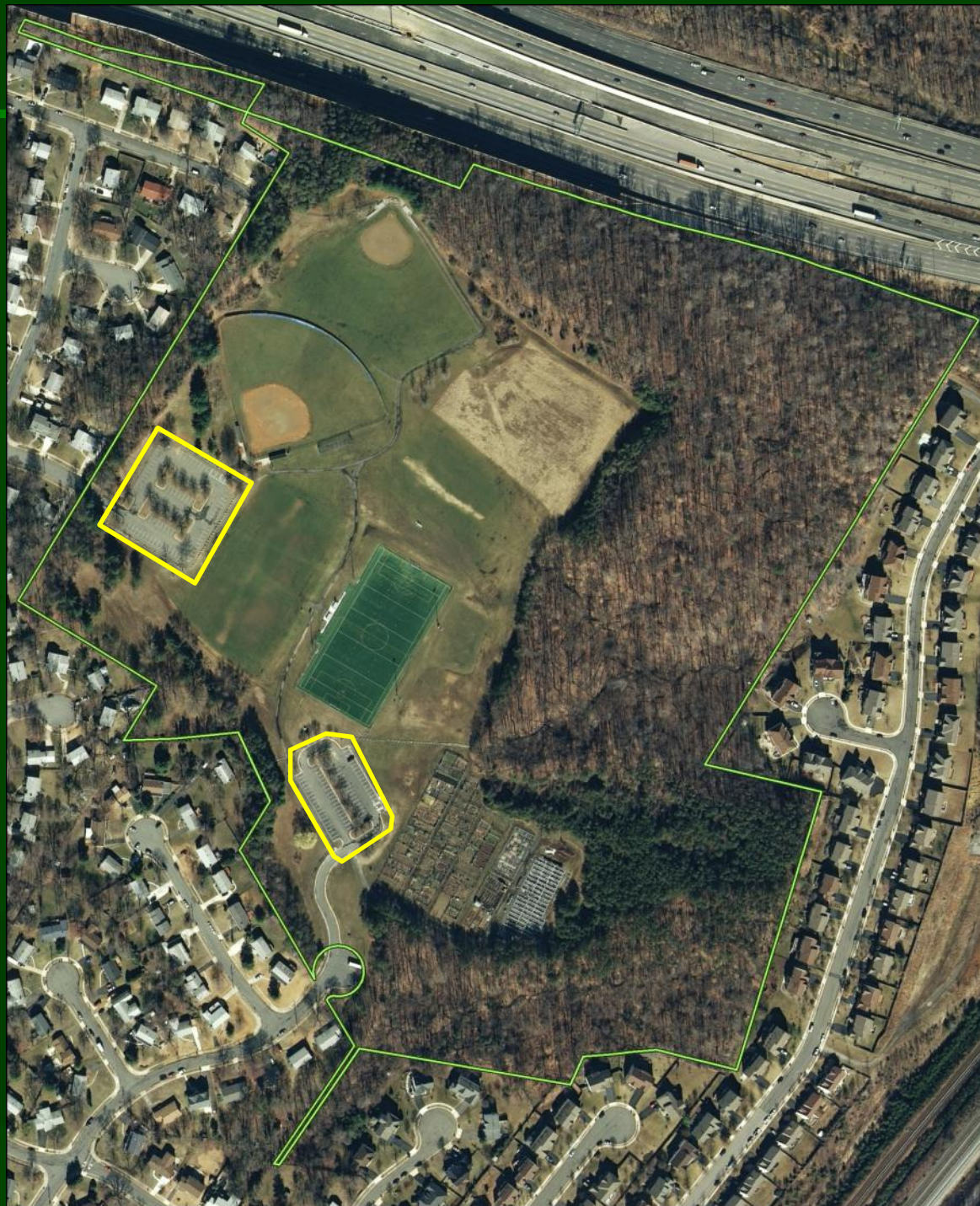


Trails








Park Use

-  **Ball Fields**
-  **Garden Plots**
-  **Trails**
-  **Parking**



Park Use

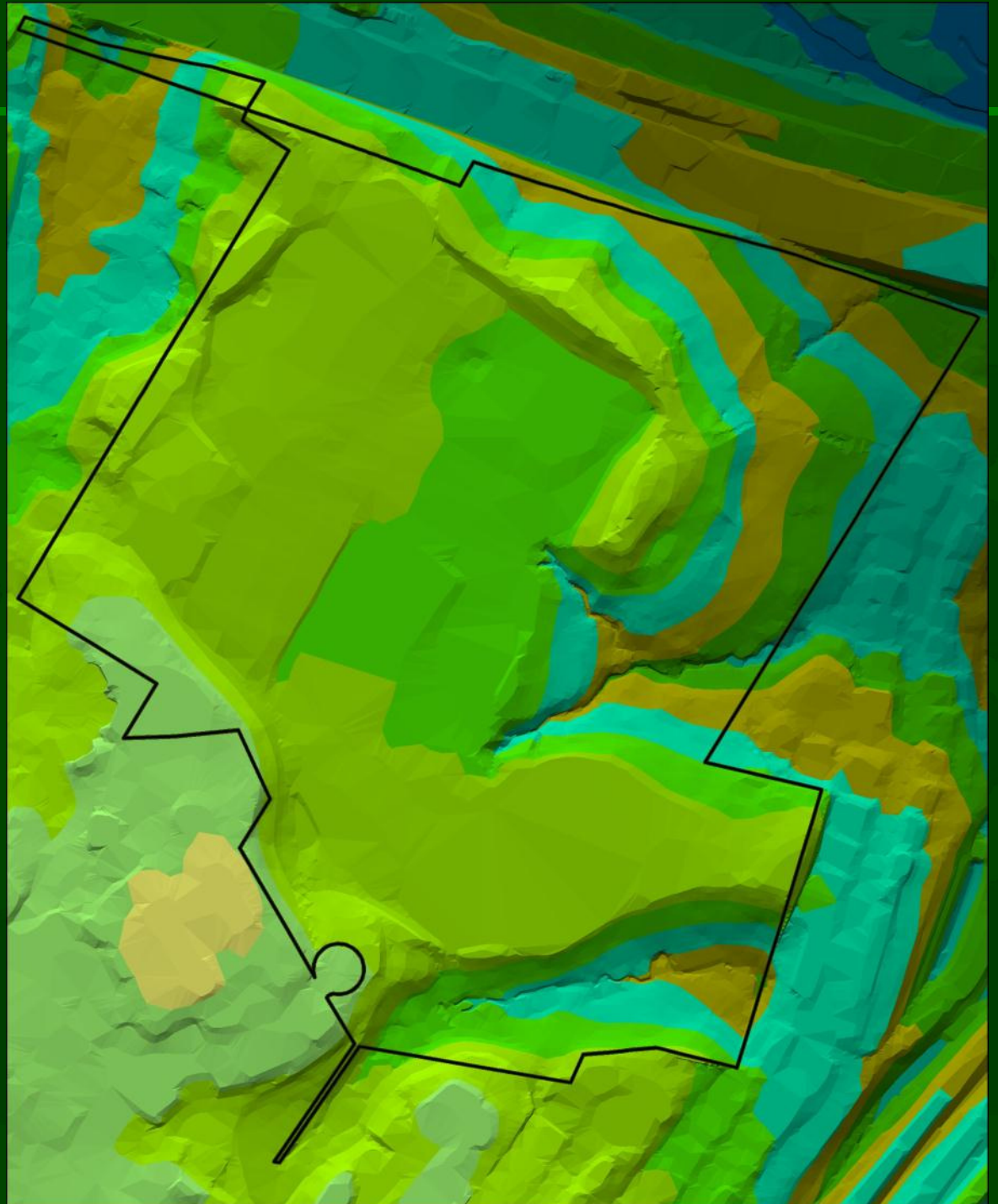
-  **Ball Fields**
-  **Garden Plots**
-  **Trails**
-  **Parking**
-  **Wooded**



Existing Conditions



Topography



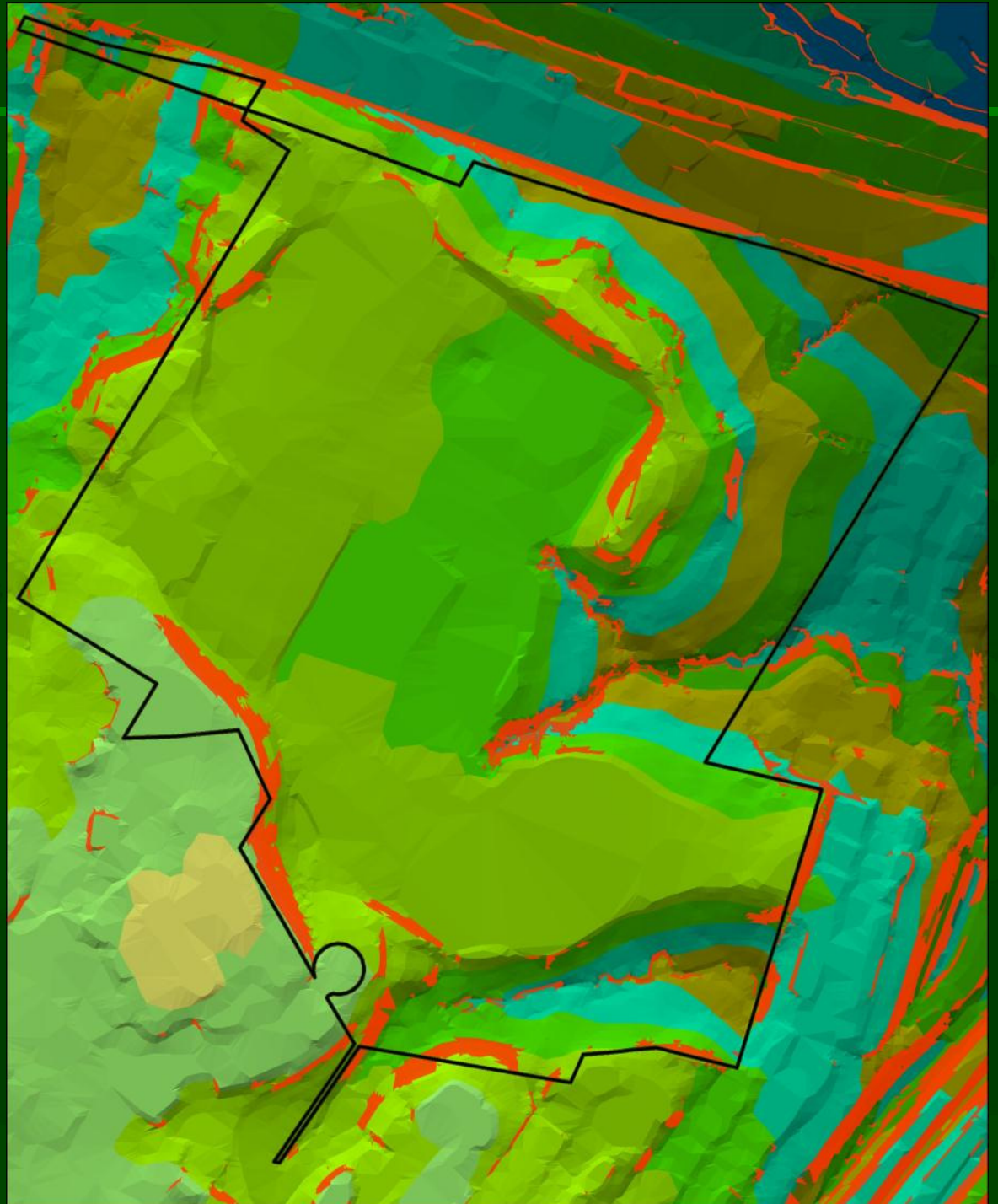
Existing Conditions






Topography

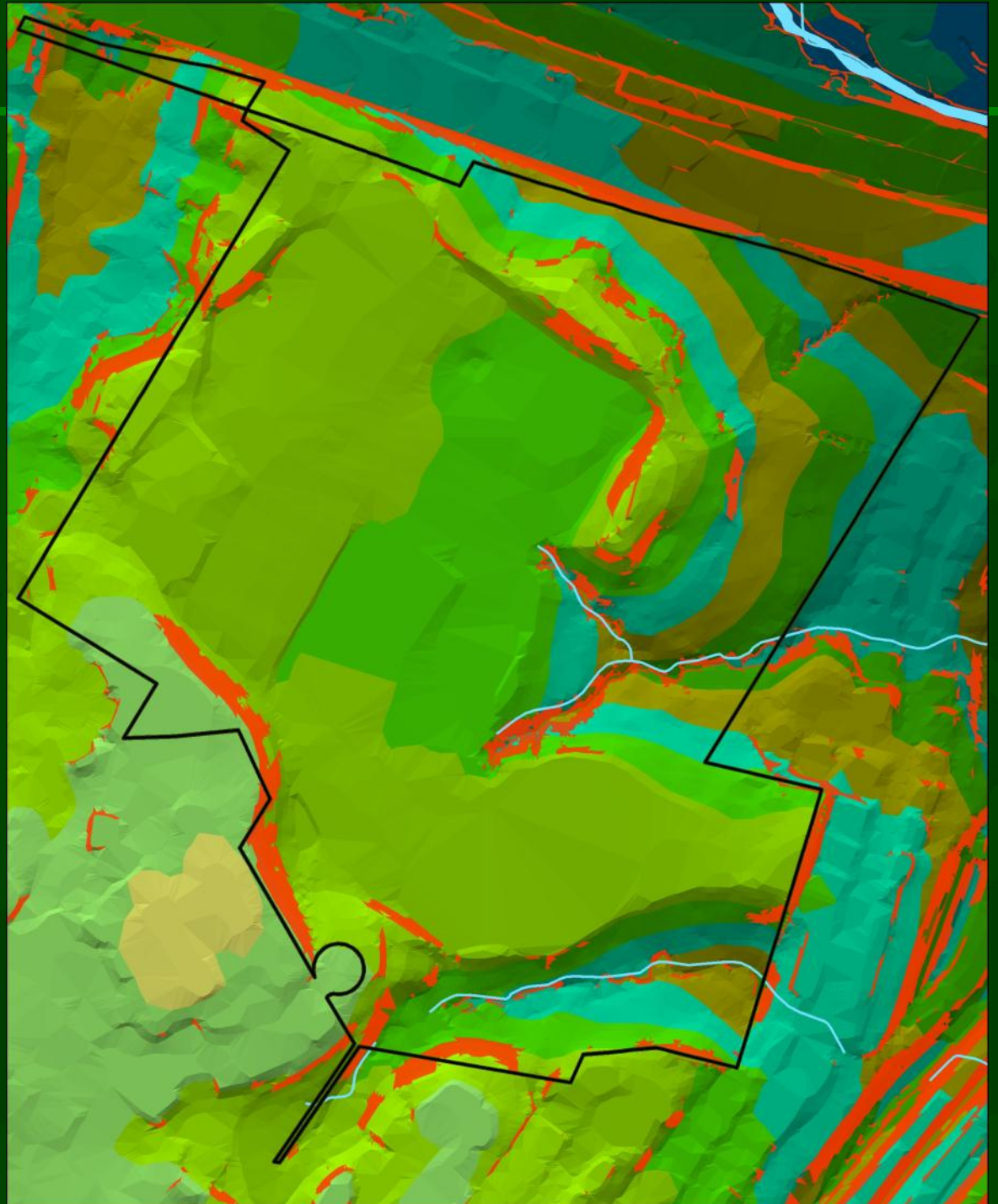


Steep Slopes



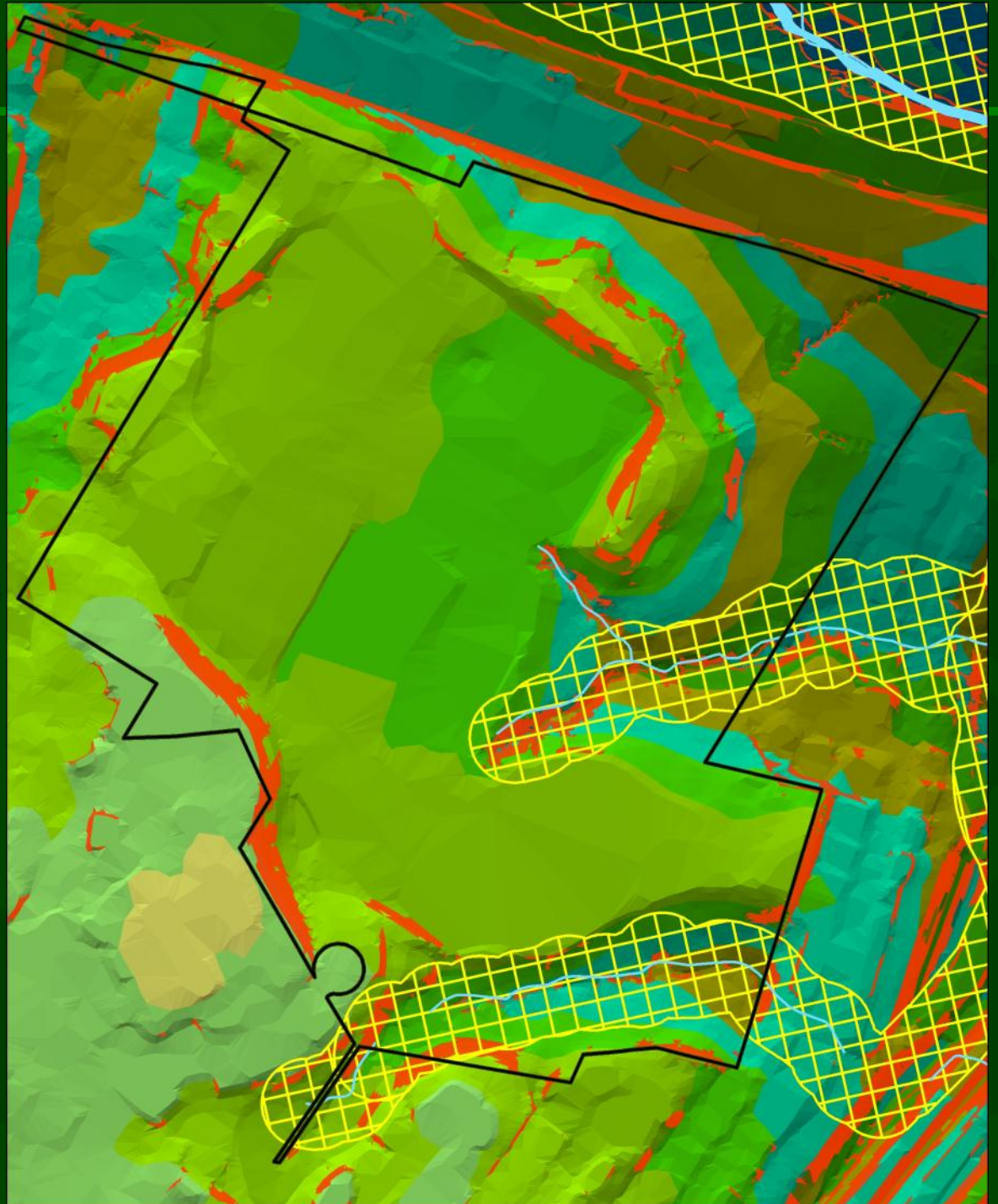
Existing Conditions

-  **Topography**
-  **Steep Slopes**
-  **Hydrology**




Existing Conditions

-  **Topography**
-  **Steep Slopes**
-  **Hydrology**
-  **Resource Protection**



Existing Conditions

-  **Topography**
-  **Steep Slopes**
-  **Hydrology**
-  **Resource Protection**
-  **Vehicle Access**



Existing Conditions

-  **Topography**
-  **Steep Slopes**
-  **Hydrology**
-  **Resource Protection**
-  **Vehicle Access**
-  **Pedestrian Access**



Existing Conditions

- Topography
- Steep Slopes
- Hydrology
- Resource Protection
- Vehicle Access
- Pedestrian Access
- Existing Facilities



Master Planned but Unbuilt Facilities



Additional Parking



Master Planned but Unbuilt Facilities

- Additional Parking
- Tennis Courts



Master Planned but Unbuilt Facilities

- Additional Parking
- Tennis Courts
- Tennis Practice Courts



Master Planned but Unbuilt Facilities

- Additional Parking
- Tennis Courts
- Tennis Practice Courts
- Archery



Master Planned but Unbuilt Facilities

- Additional Parking
- Tennis Courts
- Tennis Practice Courts
- Archery
- Concession Building



Master Planned but Unbuilt Facilities

- Additional Parking
- Tennis Courts
- Tennis Practice Courts
- Archery
- Concession Building
- Shuffleboard



Master Planned but Unbuilt Facilities

- Additional Parking
- Tennis Courts
- Tennis Practice Courts
- Archery
- Concession Building
- Shuffleboard
- Horseshoes



Master Planned but Unbuilt Facilities

- Additional Parking
- Tennis Courts
- Tennis Practice Courts
- Archery
- Concession Building
- Shuffleboard
- Horseshoes
- Multiuse Courts



Master Planned but Unbuilt Facilities

- Additional Parking
- Tennis Courts
- Tennis Practice Courts
- Archery
- Concession Building
- Shuffleboard
- Horseshoes
- Multiuse Courts
- Tot Lot & Playground



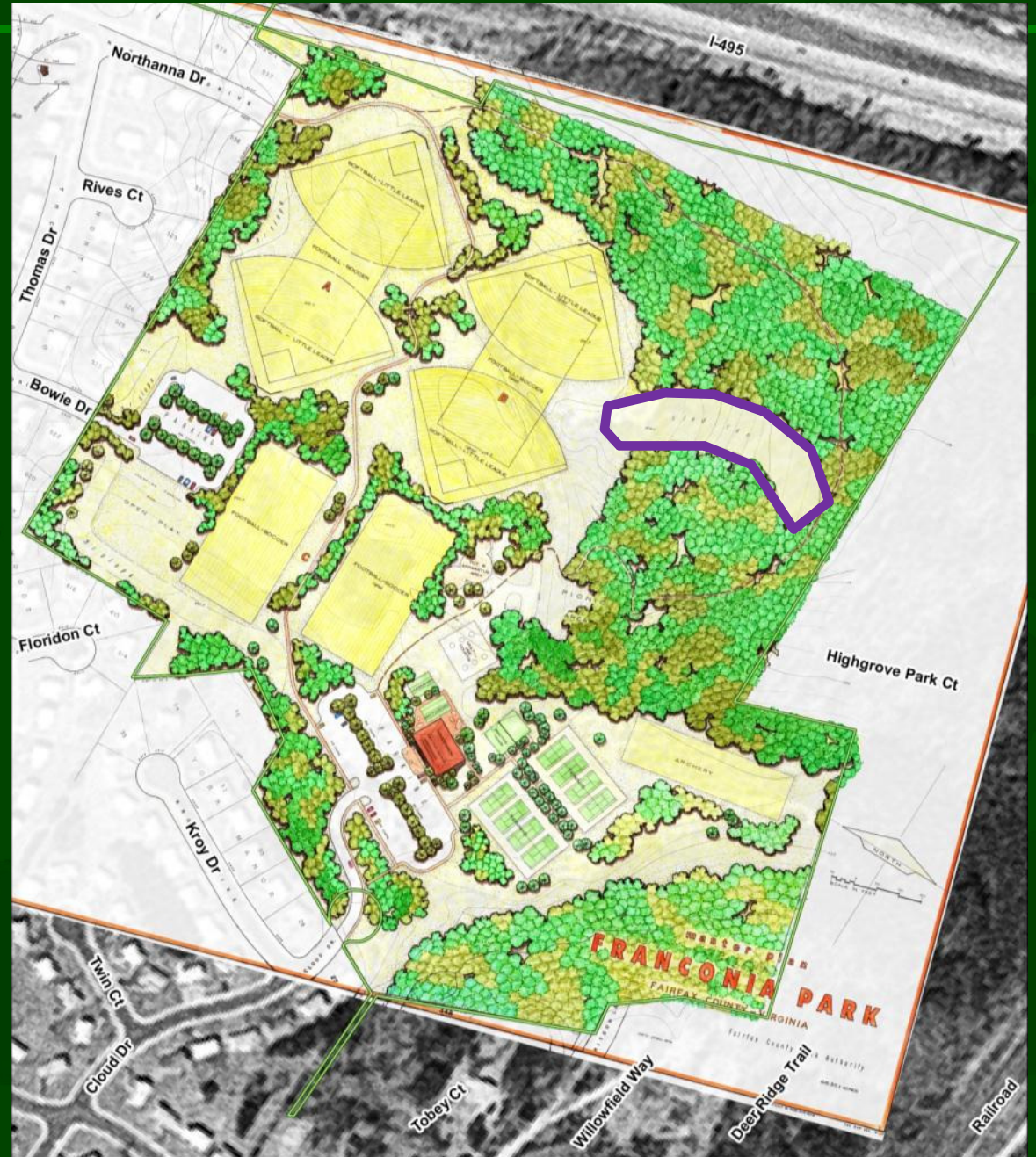
Master Planned but Unbuilt Facilities

- Additional Parking
- Tennis Courts
- Tennis Practice Courts
- Archery
- Concession Building
- Shuffleboard
- Horseshoes
- Multiuse Courts
- Tot Lot & Playground
- Picnic Area



Master Planned but Unbuilt Facilities

- Additional Parking
- Tennis Courts
- Tennis Practice Courts
- Archery
- Concession Building
- Shuffleboard
- Horseshoes
- Multiuse Courts
- Tot Lot & Playground
- Picnic Area
- Sled Run



Master Planned but Unbuilt Facilities

- Additional Parking
- Tennis Courts
- Tennis Practice Courts
- Archery
- Concession Building
- Shuffleboard
- Horseshoes
- Multiuse Courts
- Tot Lot & Playground
- Picnic Area
- Sled Run
- Lighted Diamond Fields



Master Planned but Unbuilt Facilities

- Additional Parking
- Tennis Courts
- Tennis Practice Courts
- Archery
- Concession Building
- Shuffleboard
- Horseshoes
- Multiuse Courts
- Tot Lot & Playground
- Picnic Area
- Sled Run
- Lighted Diamond Fields
- Overlay Rectangle



Master Planned but Unbuilt Facilities

- Additional Parking
- Tennis Courts
- Tennis Practice Courts
- Archery
- Concession Building
- Shuffleboard
- Horseshoes
- Multiuse Courts
- Tot Lot & Playground
- Picnic Area
- Sled Run
- Lighted Diamond Fields
- Overlay Rectangle
- Loop Trail



What Will Remain The Same



Park Rules



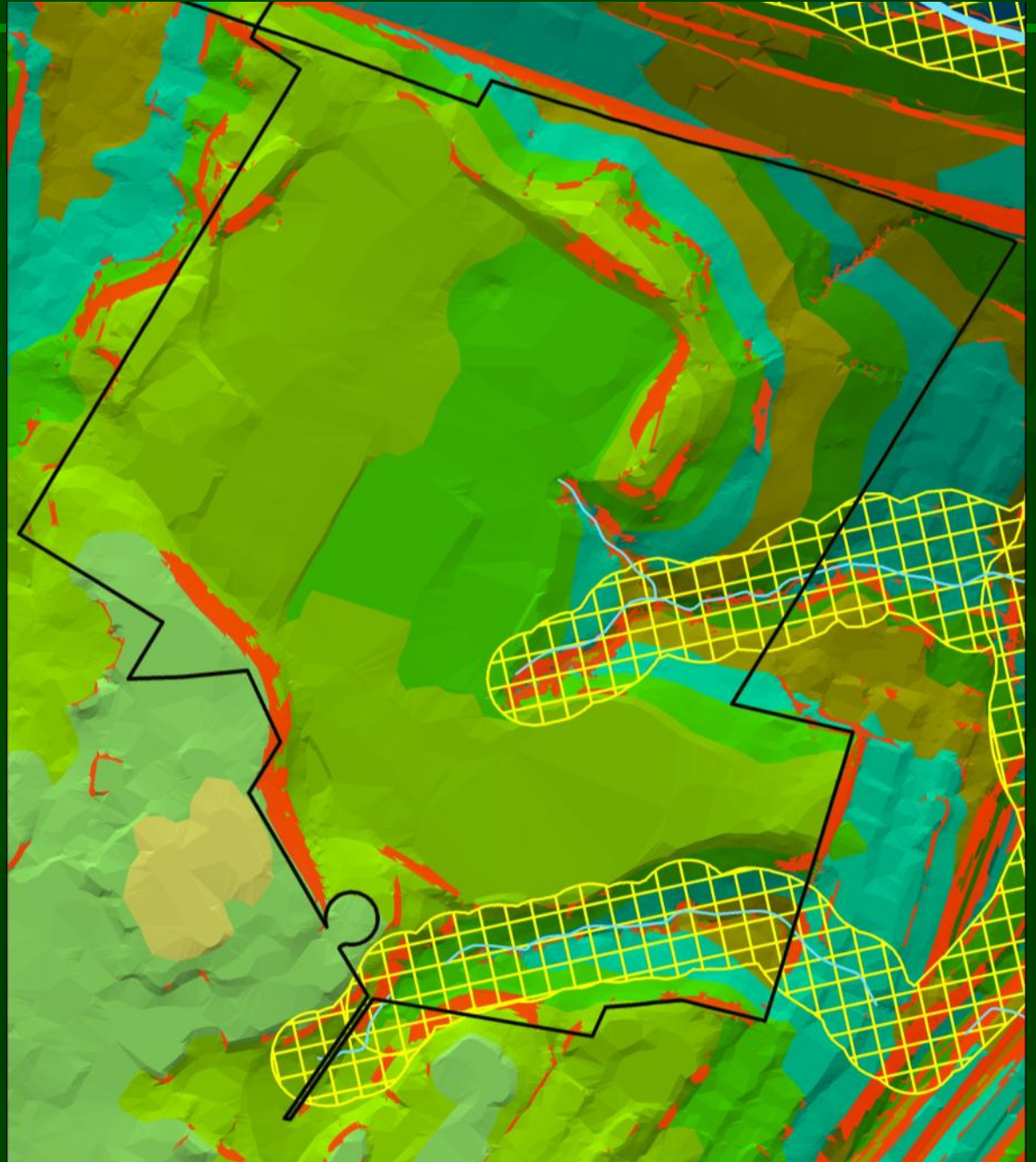
What Will Remain The Same



Park Rules

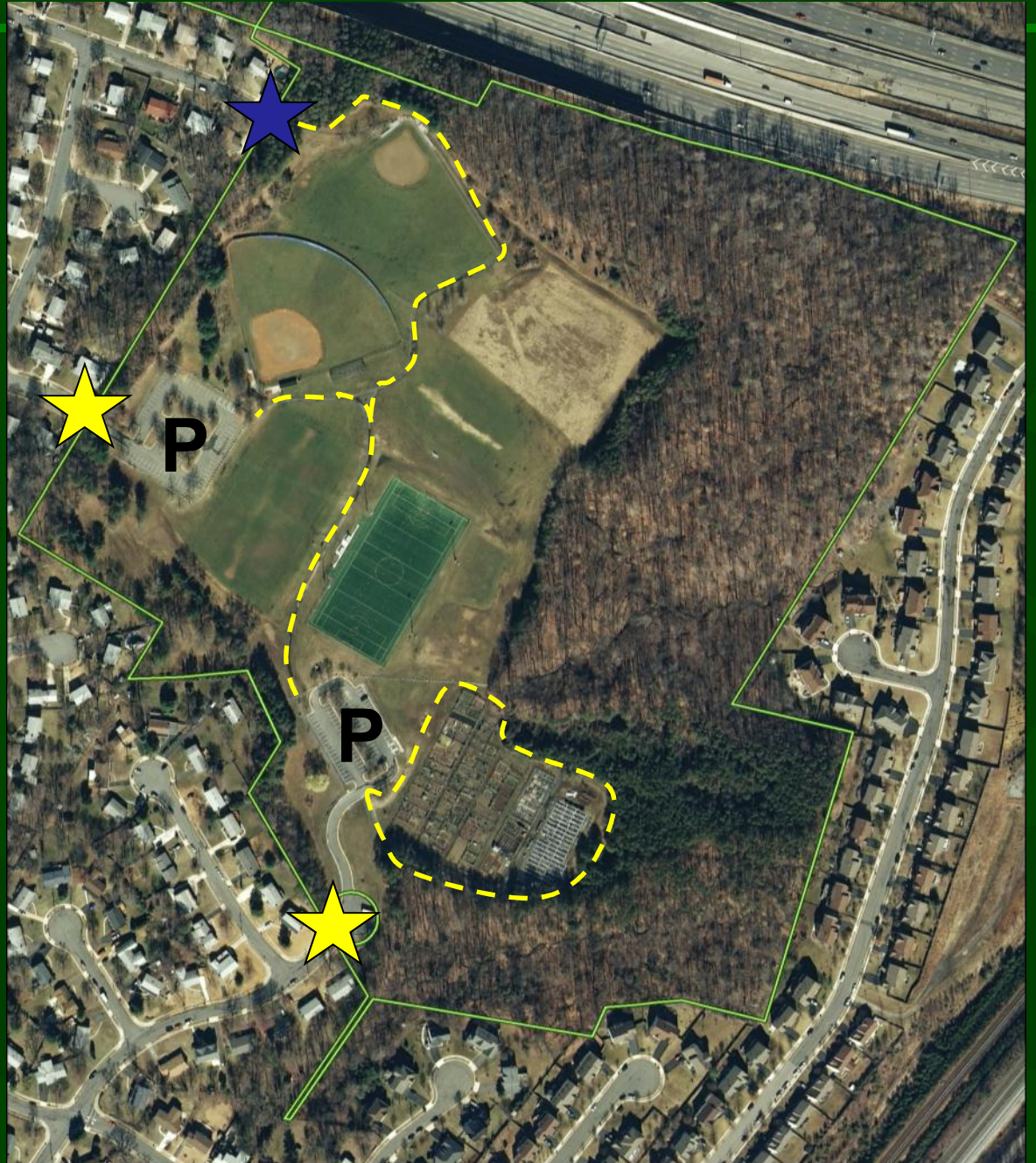


Resource Protection



What Will Remain The Same

-  **Park Rules**
-  **Resource Protection**
-  **Visitor Access**








What Will Remain The Same

-  **Park Rules**
-  **Resource Protection**
-  **Visitor Access**
-  **Existing Facilities**



What Will Remain The Same

-  **Park Rules**
-  **Resource Protection**
-  **Visitor Access**
-  **Existing Facilities**
-  **District Park**



Issues to Address in the Master Plan

-  **Address Growth**
-  **Field Capacity**
-  **Parking & Circulation**
-  **Other Park Improvements**



Help Plan Your Park

 **What would you like to see?**

-  **Uses,**
-  **Programs,**
-  **Facilities,**
-  **Improvements**

 **What should we consider?**

-  **Issues**
-  **Concerns**



Next Steps in Planning Process

Listen & Review Comments

Prepare Draft Master Plan

Present Draft To Public

30 Day Comment Period

Revise Plan as needed

Present to Park Authority Board For Action



Help Plan Your Park

Please visit our website:

<http://www.fairfaxcounty.gov/parks/plandev/franconia.htm>

Please send comments to:

By e-mail: parkmail@fairfaxcounty.gov

Old Fashioned Snail Mail:

Andy Galusha, Project Manager

Planning & Development Division, FCPA

12055 Government Center Parkway, Suite 406

Fairfax, Virginia 22035

Or By Phone:

Phone: 703-324-8702

