

Franconia Park Master Plan Revision



PUBLIC COMMENT MEETING

April 1, 2014

Tonight's Agenda

Introductions:	Judy Pedersen, Public Information Officer, FCPA
Remarks:	Supervisor McKay, Lee District Ed Batten, Park Authority Board Member, Lee District
Presentation:	Andy Galusha, Project Manager, Park Planning Branch, FCPA
Public Comment:	Moderated by Judy Pedersen



Park Authority Mission

Enhance Citizen's Quality of Life Through:

-  **Natural & Cultural Resource Stewardship**
-  **Recreational Opportunities**
-  **Quality Facilities & Services**



Fast Facts about FCPA

- 12 - Member Board
- 23,300+ Acres of Parkland
- 421 Parks
- Accredited
- 3-Time Gold Medal Winner



Park Master Plans in General

- Written Report
- Park Purpose & Classification
- Existing Conditions & Constraints
- Visitor Experience
- Planned Park Uses and Facilities
- Design Concerns



Park Master Plans in General

Written Report

Park Purpose & Classification

Existing Conditions & Constraints

Visitor Experience

Planned Park Uses and Facilities

Design Concerns

Conceptual Development Plan (CDP)

Conceptual Site Layout

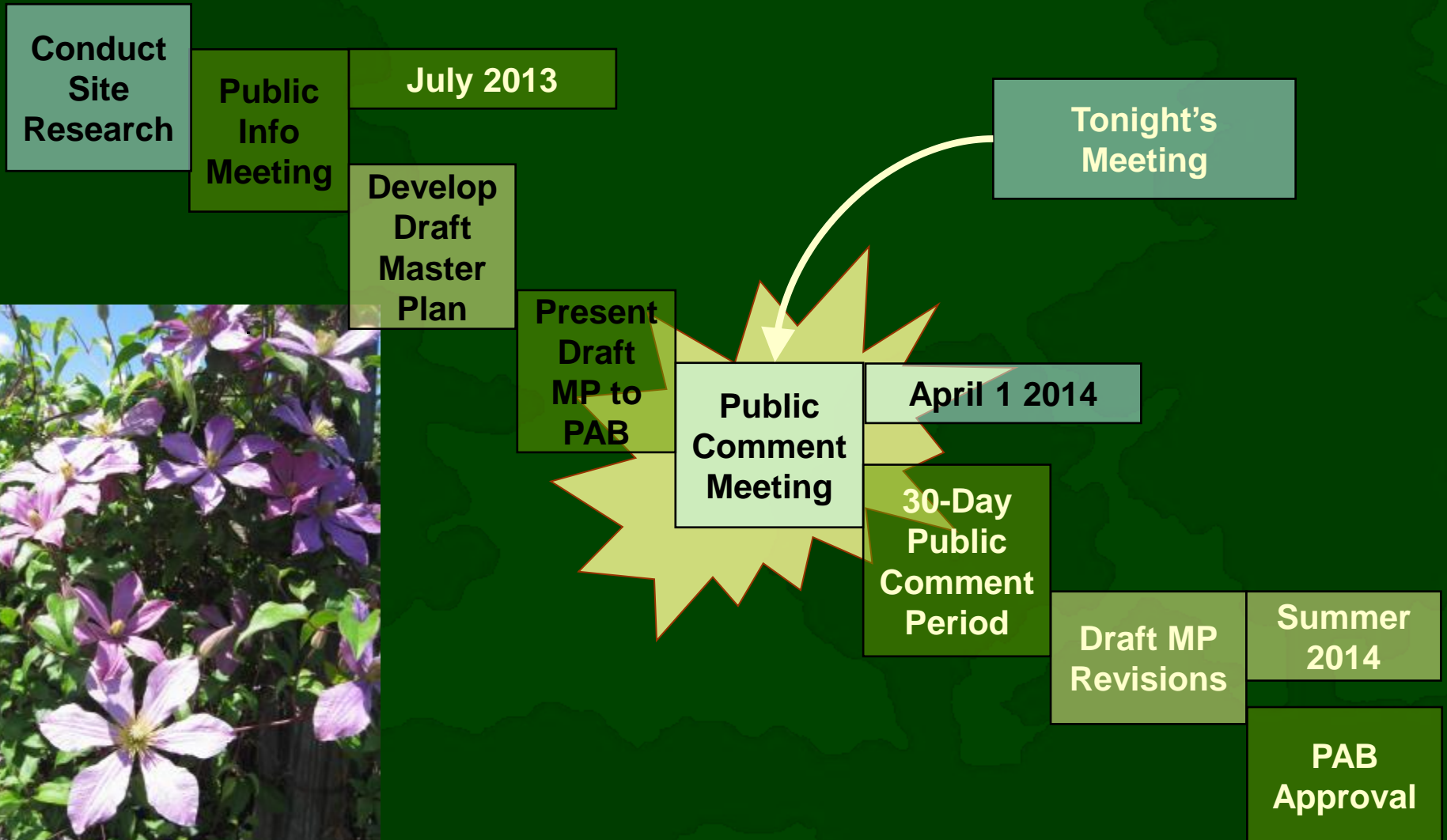
General Location of Facilities

General Location of Use Areas

Not Engineered Site Plan










Park Master Plan Time Line



**PUBLIC INPUT IS A KEY ELEMENT OF THE
MASTER PLAN PROCESS**

Staff Resources

-  **Site Staff**
-  **Archaeologists**
-  **Landscape Architects**
-  **Planners**
-  **Natural Resource Specialists**
-  **Operational Specialists**
-  **Recreation Specialists**
-  **Park Development Specialists**



Park Classification System



District Park



Diverse experiences & activities



Larger number of facilities



Lighted facilities



Longer hours & more users



Visit of half day +



50 + Acres



Serve 3 to 6 miles



Location of Franconia Park

- 🛡️ I-495
- 🛡️ I-95
- 🛡️ Franconia Road
- 🛡️ Thomas Drive
- 🛡️ Bowie Drive
- 🛡️ Willowfield Way





Nearby Parks



Backlick Stream Valley



Lee High



Monticello Woods



Trailside



Site History



Early History: Native American



Site History



Early History:

Native American



1800s:

Farmland



Site History

- Early History:
Native American
- 1800s:
Farmland
- 1937:
Farming Ceased



Site History

- Early History:
Native American
- 1800s:
Farmland
- 1937:
Farming Ceased
- Early 50s



Site History

- Early History:
Native American
- 1800s:
Farmland
- 1937:
Farming Ceased
- Late 50s – 60s:
Beltway Staging
Gravel Pit



Site History

- Early History:
Native American
- 1800s:
Farmland
- 1937:
Farming Ceased
- Late 50s – 60s:
Beltway Staging
- 1970s:
Park Authority
Acquired



Site History

- Early History:
Native American
- 1800s:
Farmland
- 1937:
Farming Ceased
- Late 50s – 60s:
Beltway Staging
- 1970s:
Park Authority
Acquired
Master Planned
Constructed



Park Use



Ball Fields



Park Use



Ball Fields



Garden Plots



Park Use

 **Ball Fields**

 **Garden Plots**

 **Trails**



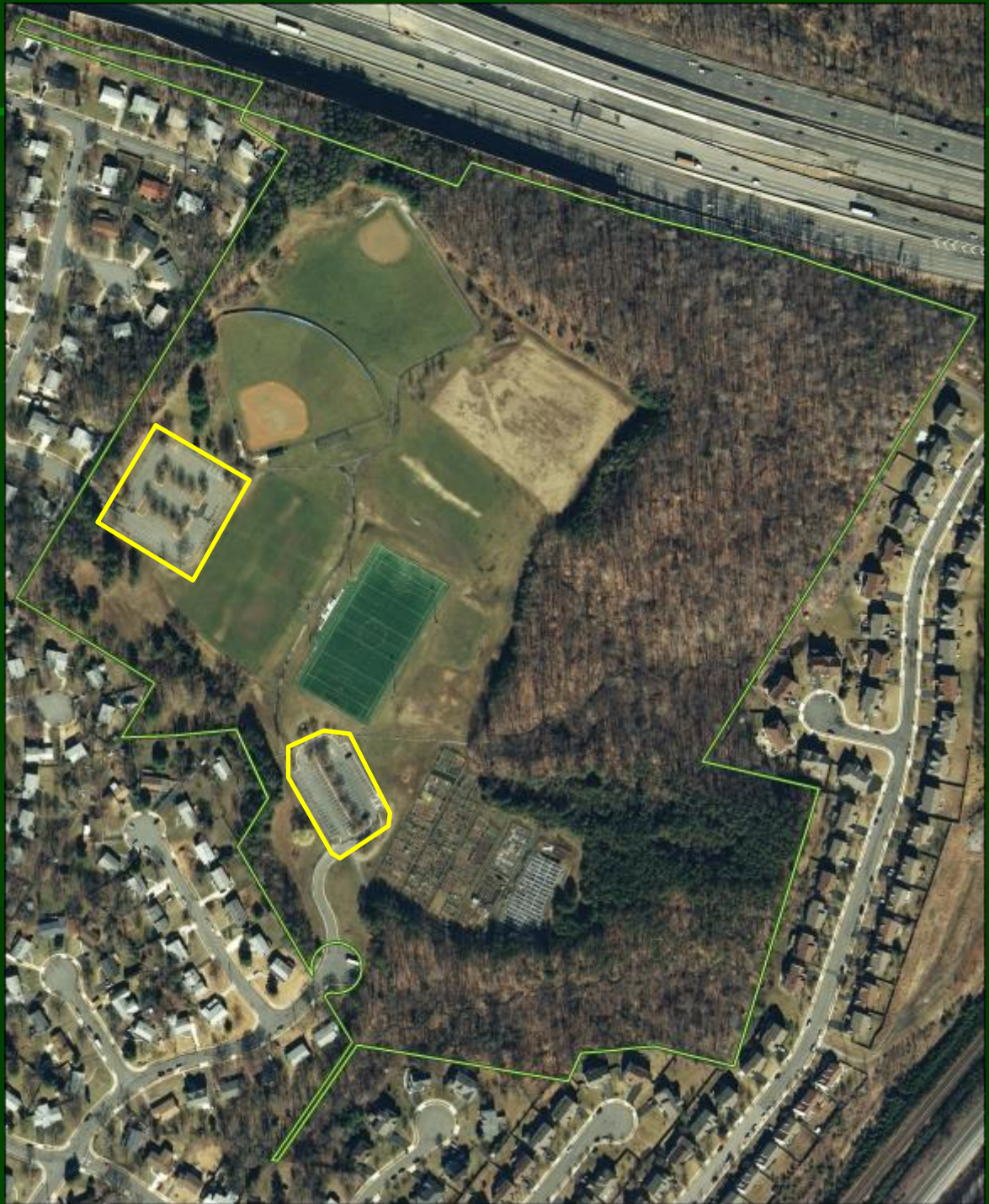
Park Use

 **Ball Fields**

 **Garden Plots**

 **Trails**

 **Parking**



Park Use

-  **Ball Fields**
-  **Garden Plots**
-  **Trails**
-  **Parking**
-  **Wooded**



Park Use



Ball Fields



Garden Plots



Trails



Parking



Wooded



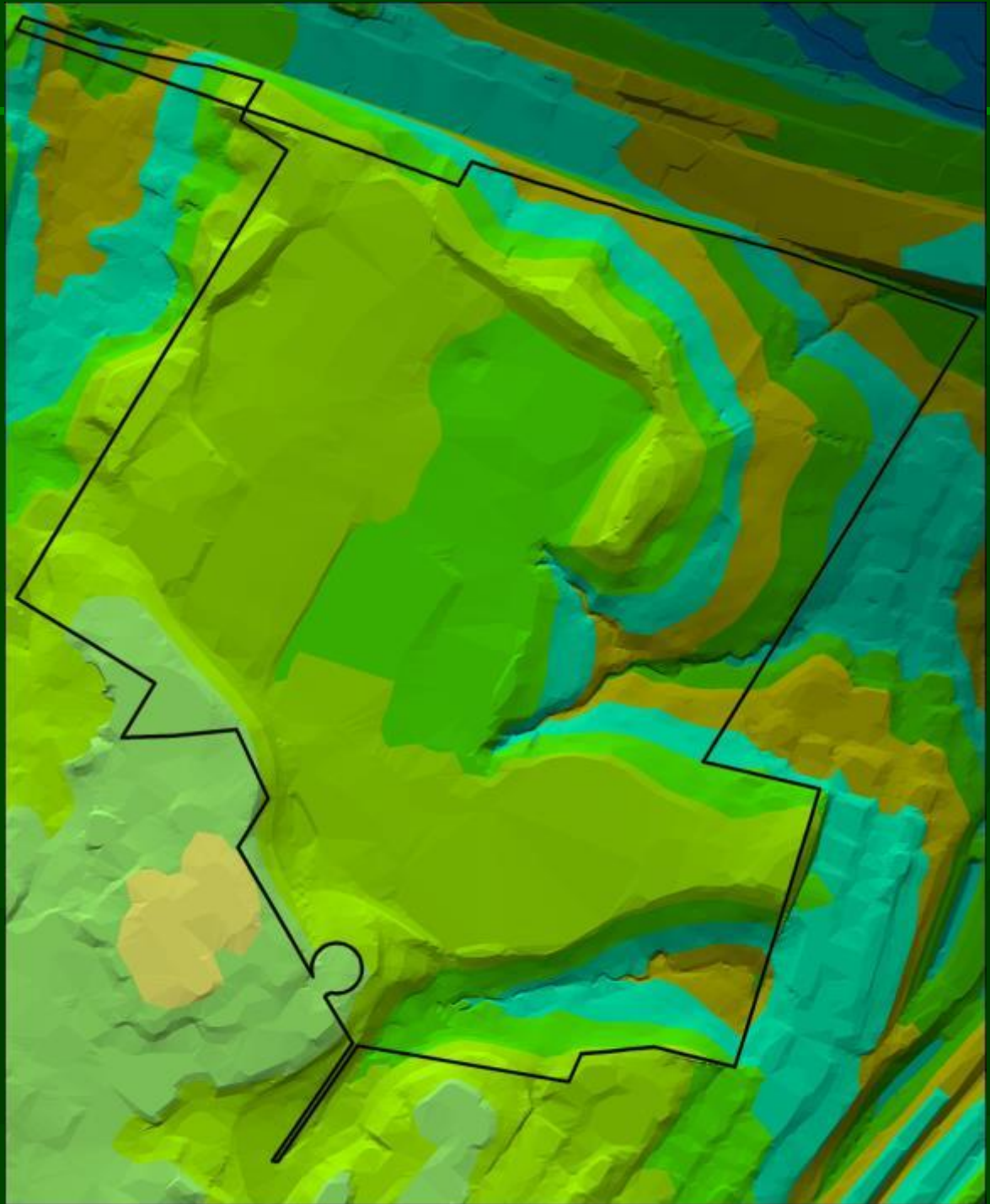
Wildlife



Existing Conditions



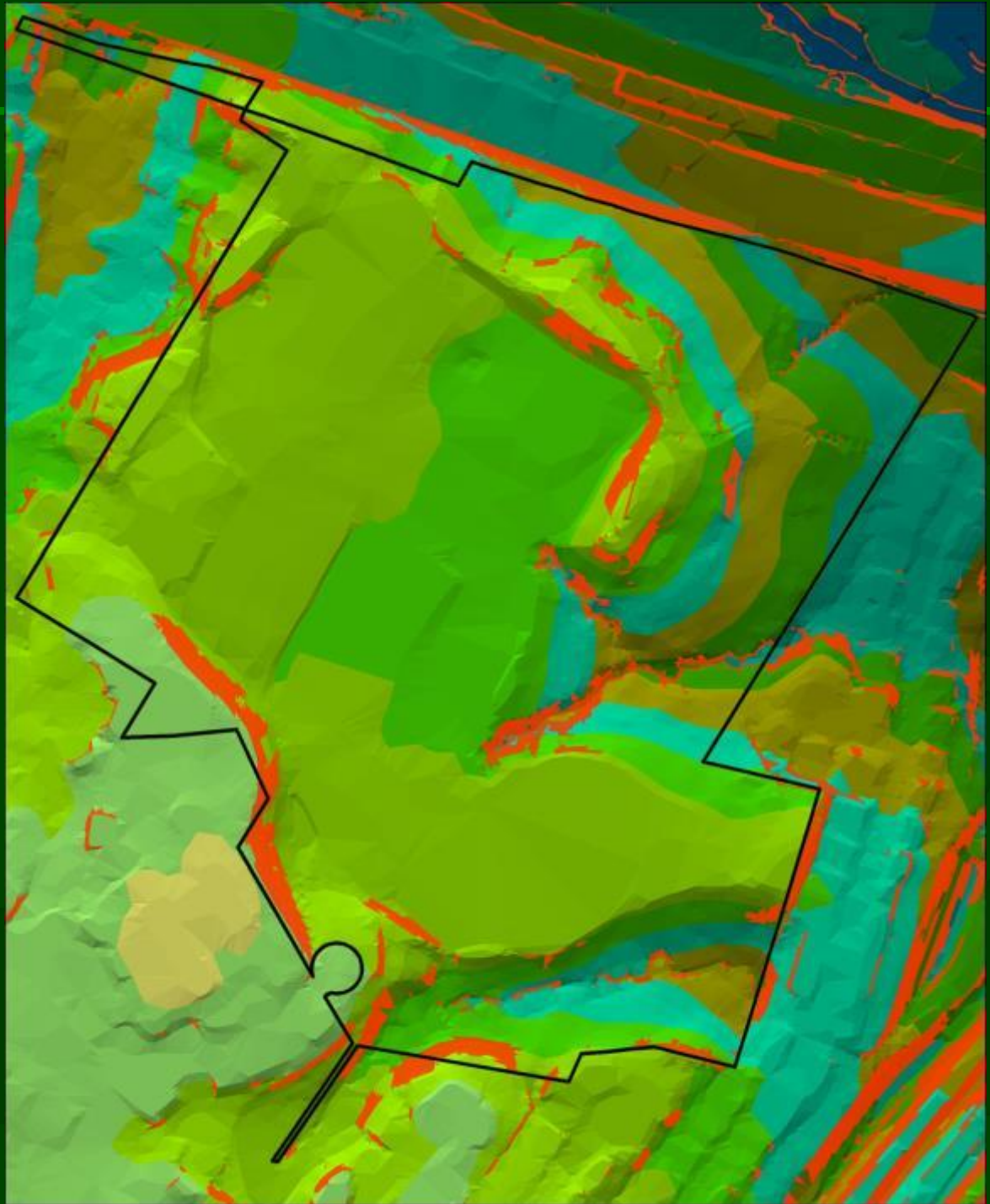
Topography



Existing Conditions

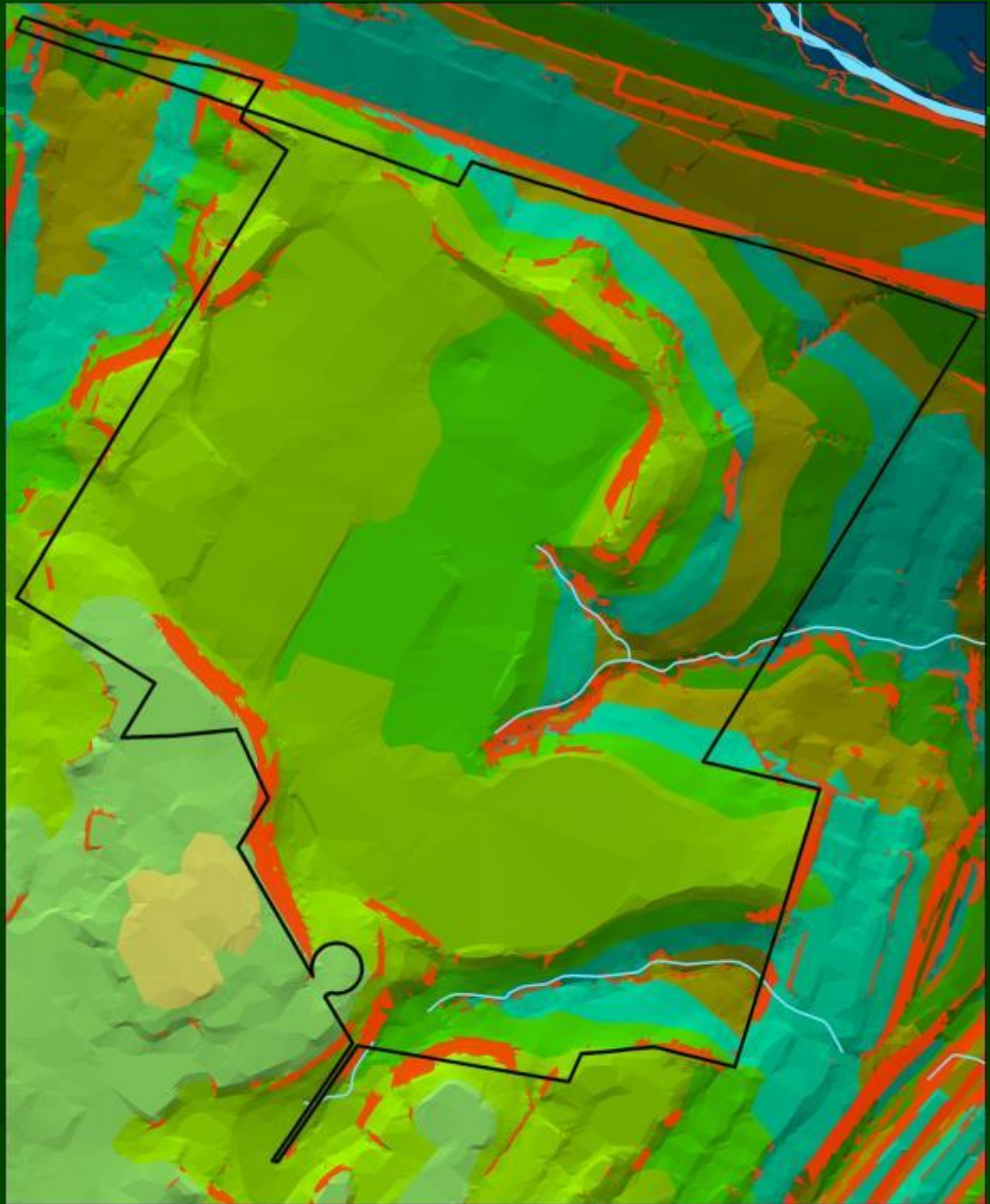
 Topography

 Steep Slopes



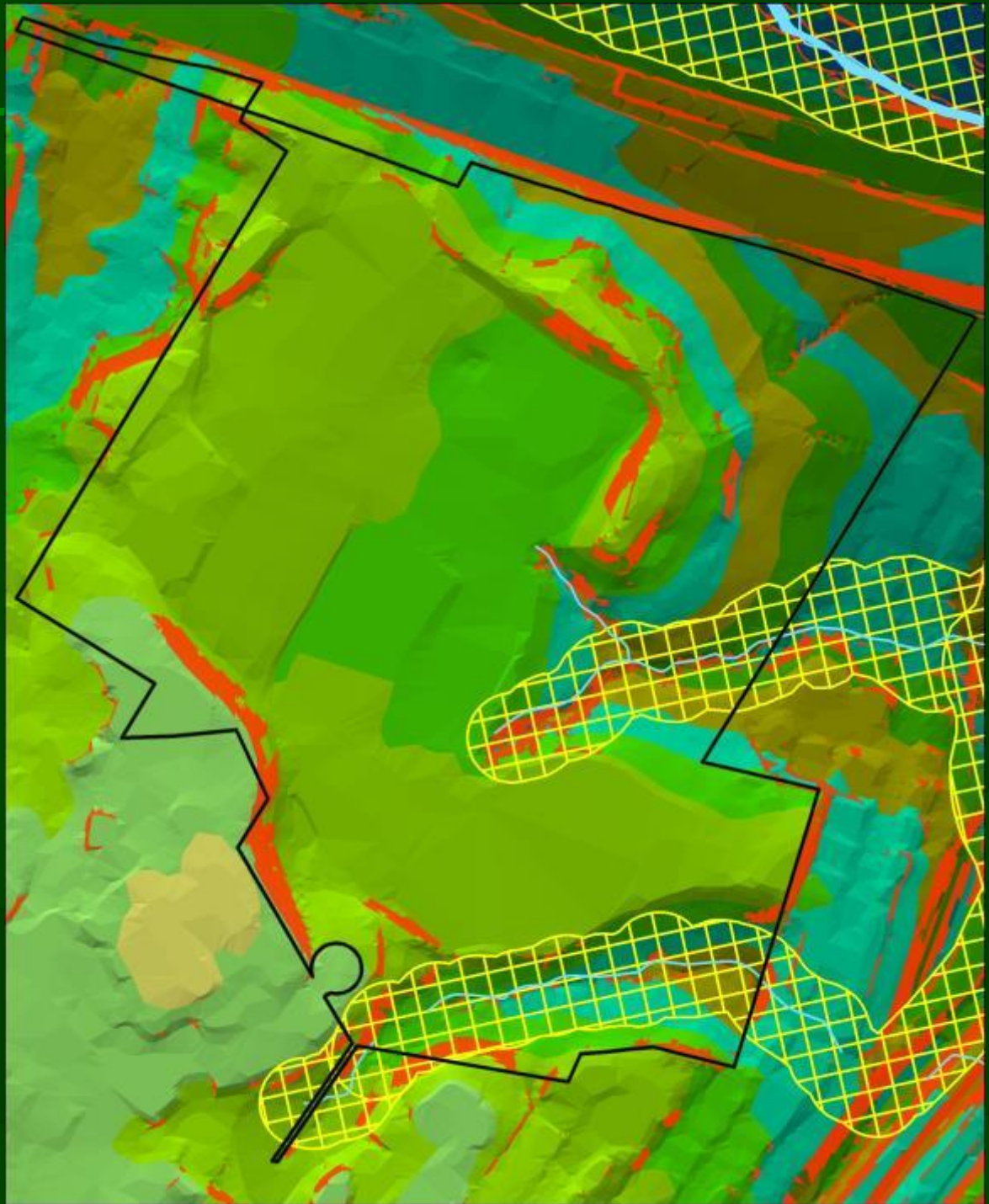
Existing Conditions

- Topography
- Steep Slopes
- Hydrology



Existing Conditions

- Topography
- Steep Slopes
- Hydrology
- Resource Protection



Existing Conditions

- Topography
- Steep Slopes
- Hydrology
- Resource Protection
- Vehicle Access










Existing Conditions

-  **Topography**
-  **Steep Slopes**
-  **Hydrology**
-  **Resource Protection**
-  **Vehicle Access**
-  **Pedestrian Access**



Existing Conditions

-  **Topography**
-  **Steep Slopes**
-  **Hydrology**
-  **Resource Protection**
-  **Vehicle Access**
-  **Pedestrian Access**
-  **Existing Facilities**



Master Planned - Unbuilt Facilities



Additional Parking



Master Planned - Unbuilt Facilities

- Additional Parking
- Tennis Courts



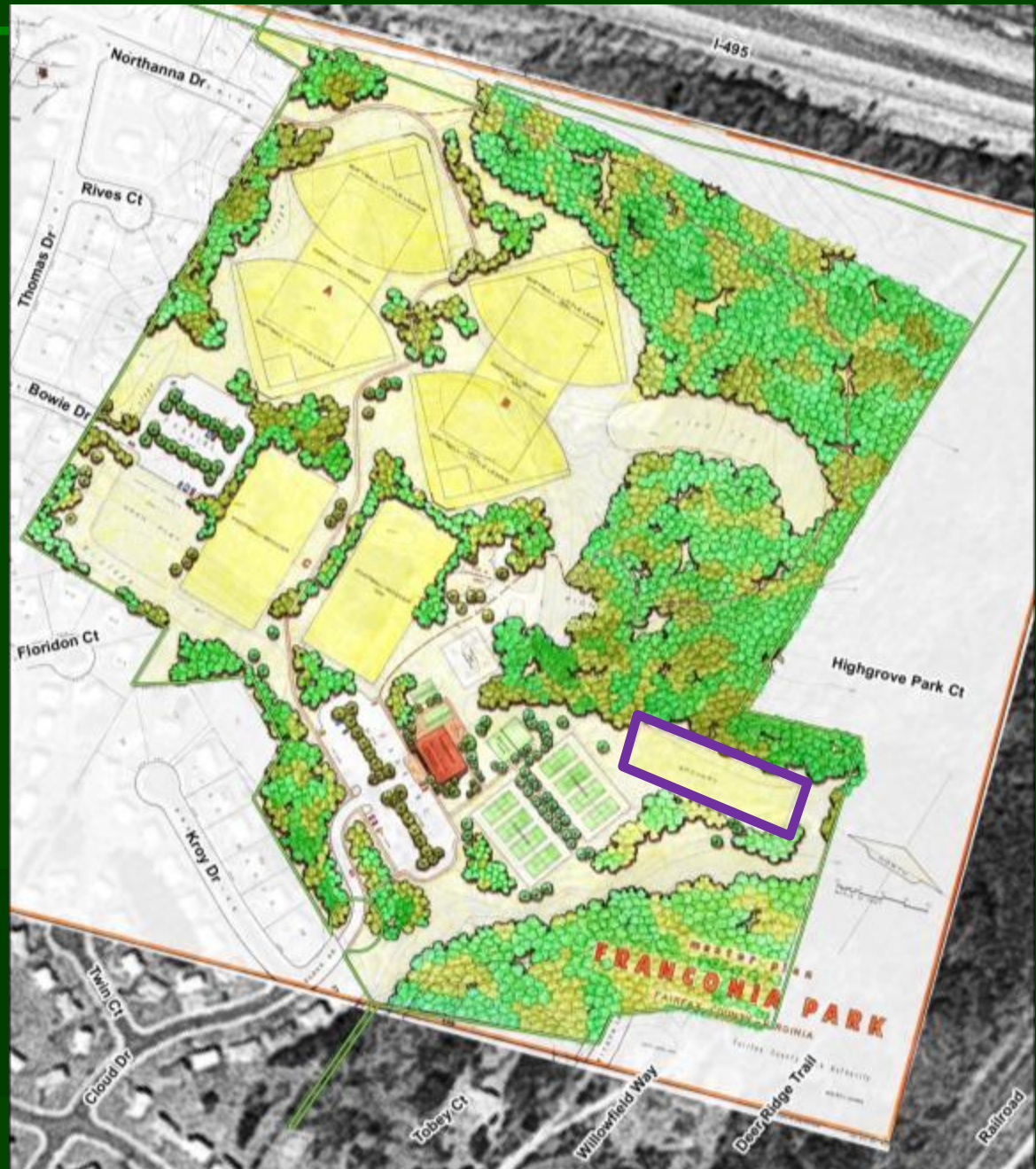
Master Planned - Unbuilt Facilities

- Additional Parking
- Tennis Courts
- Tennis Practice Courts



Master Planned - Unbuilt Facilities

- Additional Parking
- Tennis Courts
- Tennis Practice Courts
- Archery



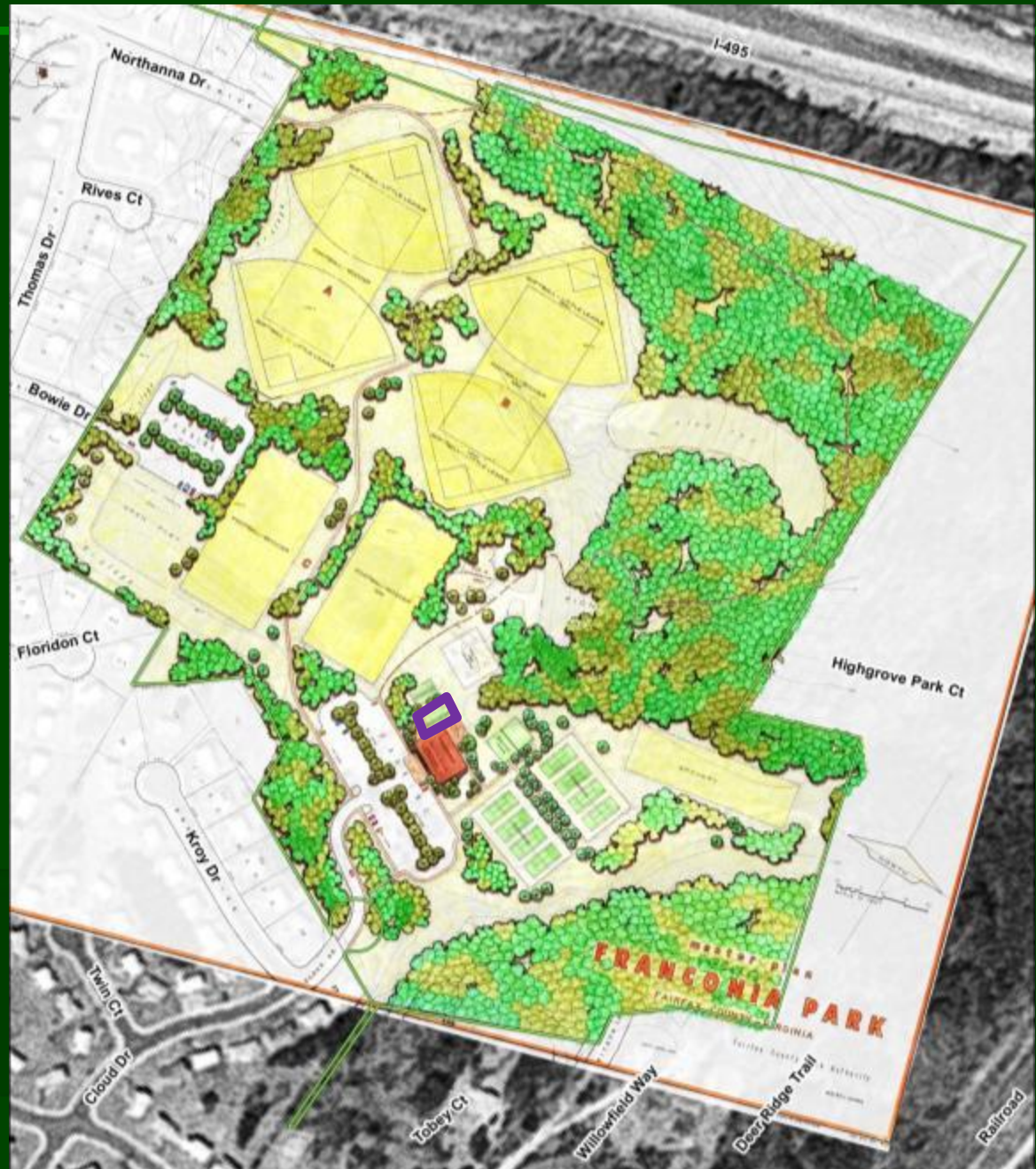
Master Planned - Unbuilt Facilities

- Additional Parking
- Tennis Courts
- Tennis Practice Courts
- Archery
- Concession Building



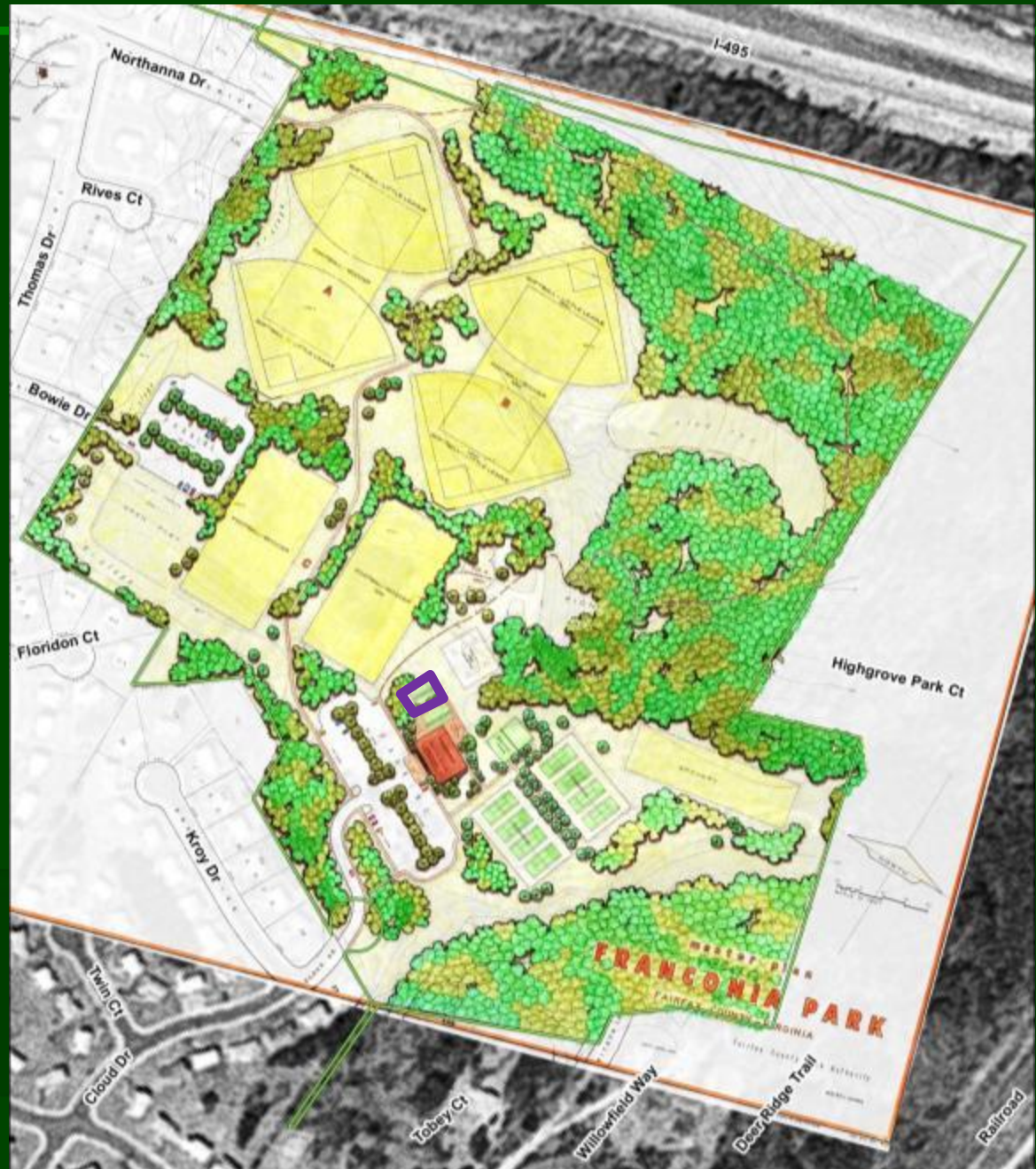
Master Planned - Unbuilt Facilities

- Additional Parking
- Tennis Courts
- Tennis Practice Courts
- Archery
- Concession Building
- Shuffleboard



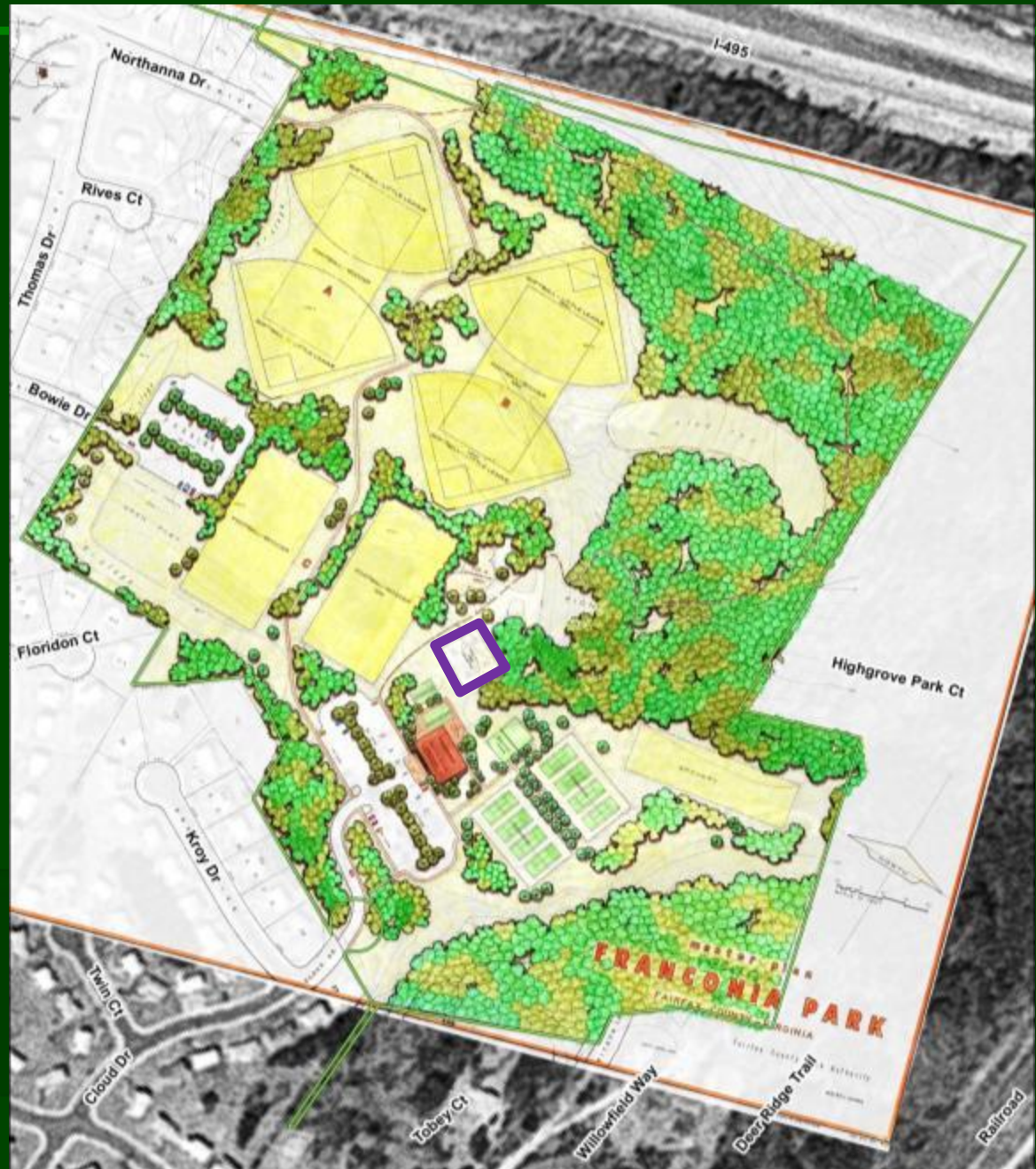
Master Planned - Unbuilt Facilities

- Additional Parking
- Tennis Courts
- Tennis Practice Courts
- Archery
- Concession Building
- Shuffleboard
- Horseshoes



Master Planned - Unbuilt Facilities

- Additional Parking
- Tennis Courts
- Tennis Practice Courts
- Archery
- Concession Building
- Shuffleboard
- Horseshoes
- Multiuse Courts



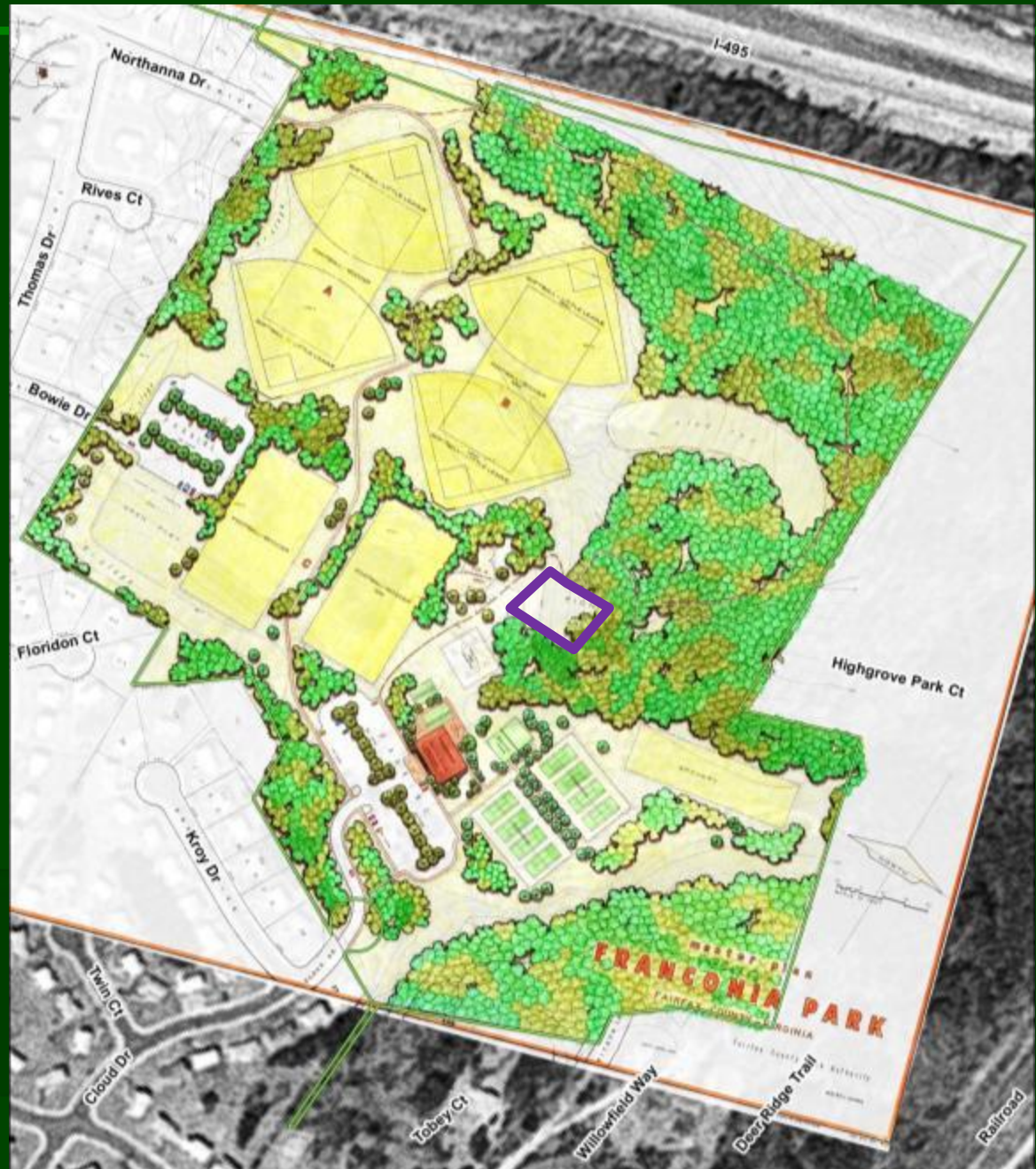
Master Planned - Unbuilt Facilities

- Additional Parking
- Tennis Courts
- Tennis Practice Courts
- Archery
- Concession Building
- Shuffleboard
- Horseshoes
- Multiuse Courts
- Tot Lot & Playground



Master Planned - Unbuilt Facilities

- Additional Parking
- Tennis Courts
- Tennis Practice Courts
- Archery
- Concession Building
- Shuffleboard
- Horseshoes
- Multiuse Courts
- Tot Lot & Playground
- Picnic Area



Master Planned - Unbuilt Facilities

- Additional Parking
- Tennis Courts
- Tennis Practice Courts
- Archery
- Concession Building
- Shuffleboard
- Horseshoes
- Multiuse Courts
- Tot Lot & Playground
- Picnic Area
- Sled Run



Master Planned - Unbuilt Facilities

- Additional Parking
- Tennis Courts
- Tennis Practice Courts
- Archery
- Concession Building
- Shuffleboard
- Horseshoes
- Multiuse Courts
- Tot Lot & Playground
- Picnic Area
- Sled Run
- Lighted Diamond Fields



Master Planned - Unbuilt Facilities

- Additional Parking
- Tennis Courts
- Tennis Practice Courts
- Archery
- Concession Building
- Shuffleboard
- Horseshoes
- Multiuse Courts
- Tot Lot & Playground
- Picnic Area
- Sled Run
- Lighted Diamond Fields
- Overlay Rectangle



Master Planned - Unbuilt Facilities

- Additional Parking
- Tennis Courts
- Tennis Practice Courts
- Archery
- Concession Building
- Shuffleboard
- Horseshoes
- Multiuse Courts
- Tot Lot & Playground
- Picnic Area
- Sled Run
- Lighted Diamond Fields
- Overlay Rectangle
- Loop Trail



Address in the Master Plan Revision

-  **Park and Recreation Needs**
-  **Expand Existing Features**
 -  **Field Capacity**
 -  **Garden Plots**
 -  **Nursery**
-  **Parking & Circulation**
-  **Protect Natural Areas**
-  **Permanent Restroom**
-  **Support Facilities**
-  **Add New Facilities**
 -  **Dog Park**
 -  **Playground**
 -  **Trails**
-  **Connectivity**



Master Plan Revision

 **Planned Features Removed**

 **Upgrade Retained Features**

 **New Features**



What Will Be Removed from 1974 Plan



Tennis Courts



What Will Be Removed from 1974 Plan

-  Tennis Courts
-  Tennis Practice Courts



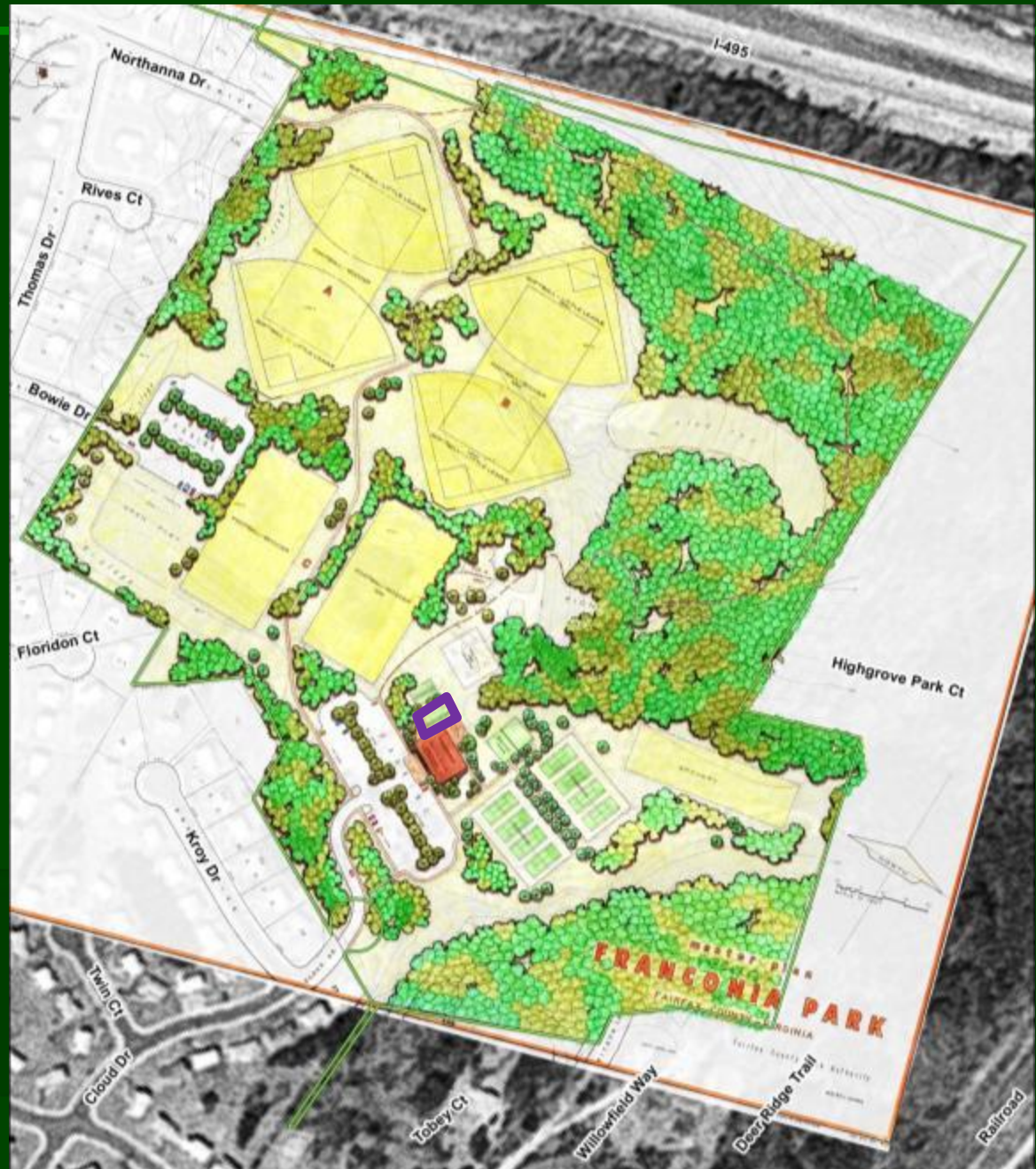
What Will Be Removed from 1974 Plan

- 🏆 Tennis Courts
- 🏆 Tennis Practice Courts
- 🏆 Concession Building



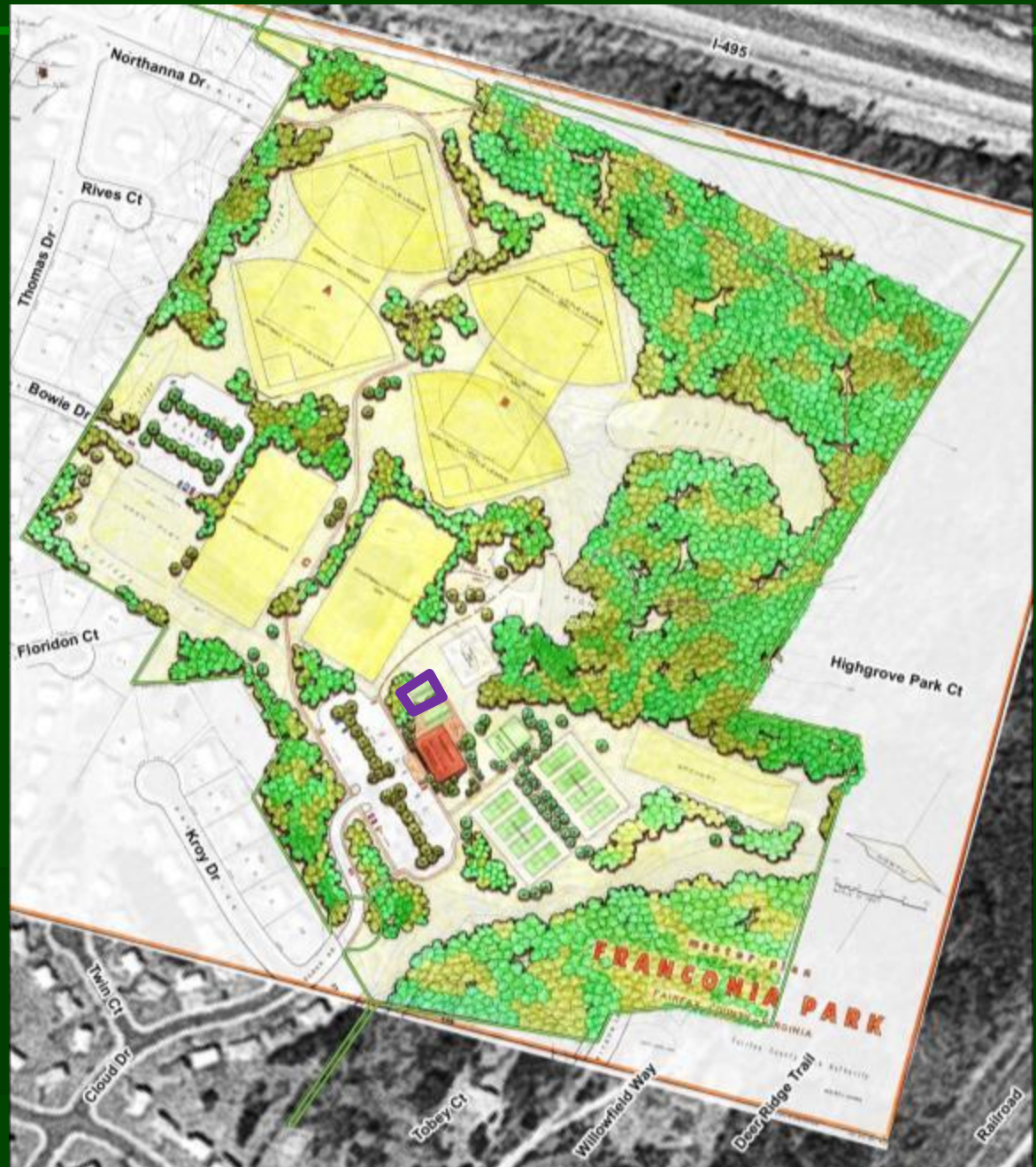
What Will Be Removed from 1974 Plan

- 🏆 Tennis Courts
- 🏆 Tennis Practice Courts
- 🏆 Concession Building
- 🏆 Shuffleboard



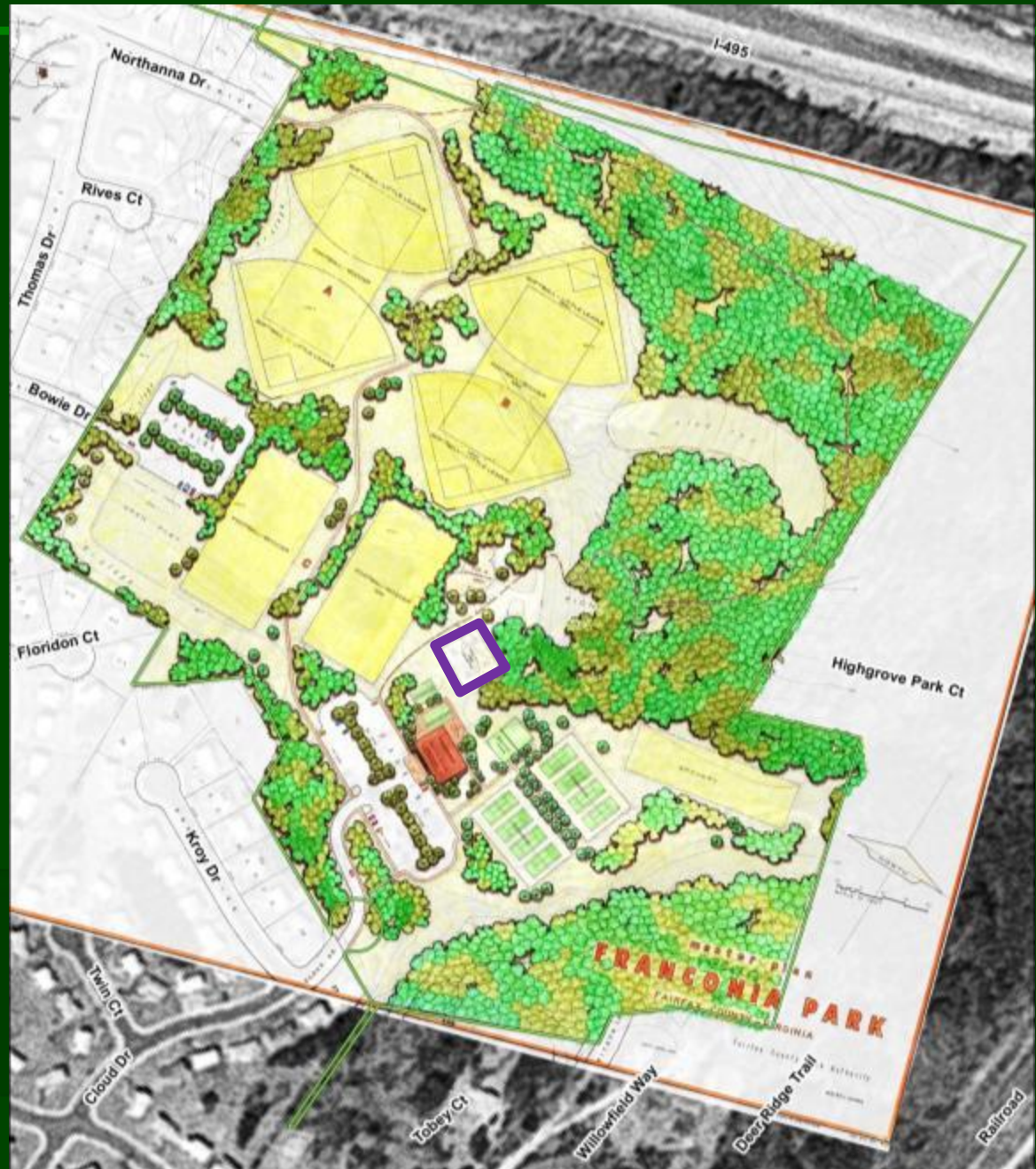
What Will Be Removed from 1974 Plan

- 🏆 Tennis Courts
- 🏆 Tennis Practice Courts
- 🏆 Concession Building
- 🏆 Shuffleboard
- 🏆 Horseshoes



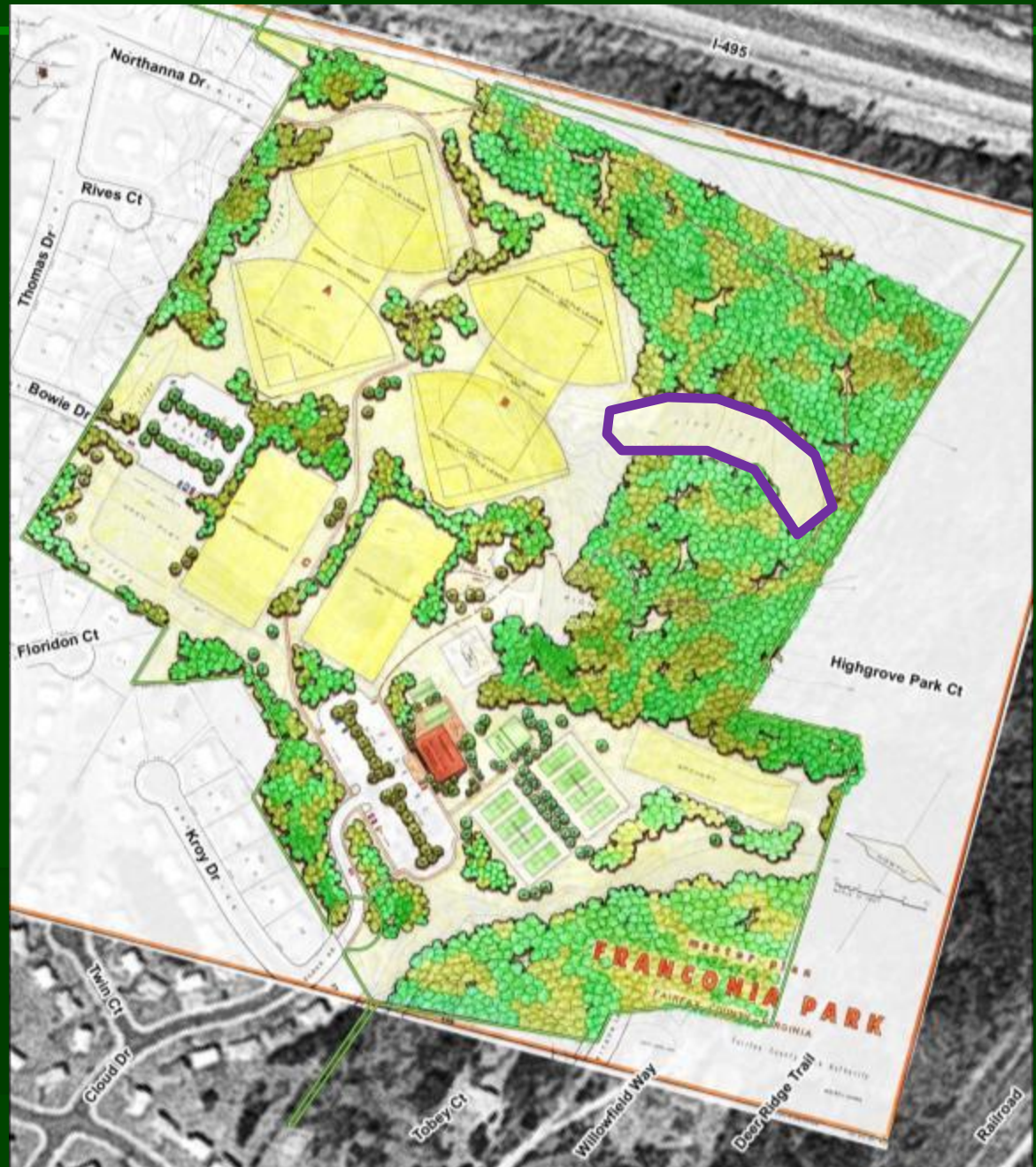
What Will Be Removed from 1974 Plan

- 🏆 Tennis Courts
- 🏆 Tennis Practice Courts
- 🏆 Concession Building
- 🏆 Shuffleboard
- 🏆 Horseshoes
- 🏆 Multiuse Courts



What Will Be Removed from 1974 Plan

- 🏆 Tennis Courts
- 🏆 Tennis Practice Courts
- 🏆 Concession Building
- 🏆 Shuffleboard
- 🏆 Horseshoes
- 🏆 Multiuse Courts
- 🏆 Sled Run



What Will Be Removed from 1974 Plan

- 🏆 Tennis Courts
- 🏆 Tennis Practice Courts
- 🏆 Concession Building
- 🏆 Shuffleboard
- 🏆 Horseshoes
- 🏆 Multiuse Courts
- 🏆 Sled Run
- 🏆 Diamond Fields



What Will Be Removed from 1974 Plan

- 🏆 Tennis Courts
- 🏆 Tennis Practice Courts
- 🏆 Concession Building
- 🏆 Shuffleboard
- 🏆 Horseshoes
- 🏆 Multiuse Courts
- 🏆 Sled Run
- 🏆 Diamond Fields
- 🏆 Overlay Rectangle



What Will Remain The Same



Park Rules



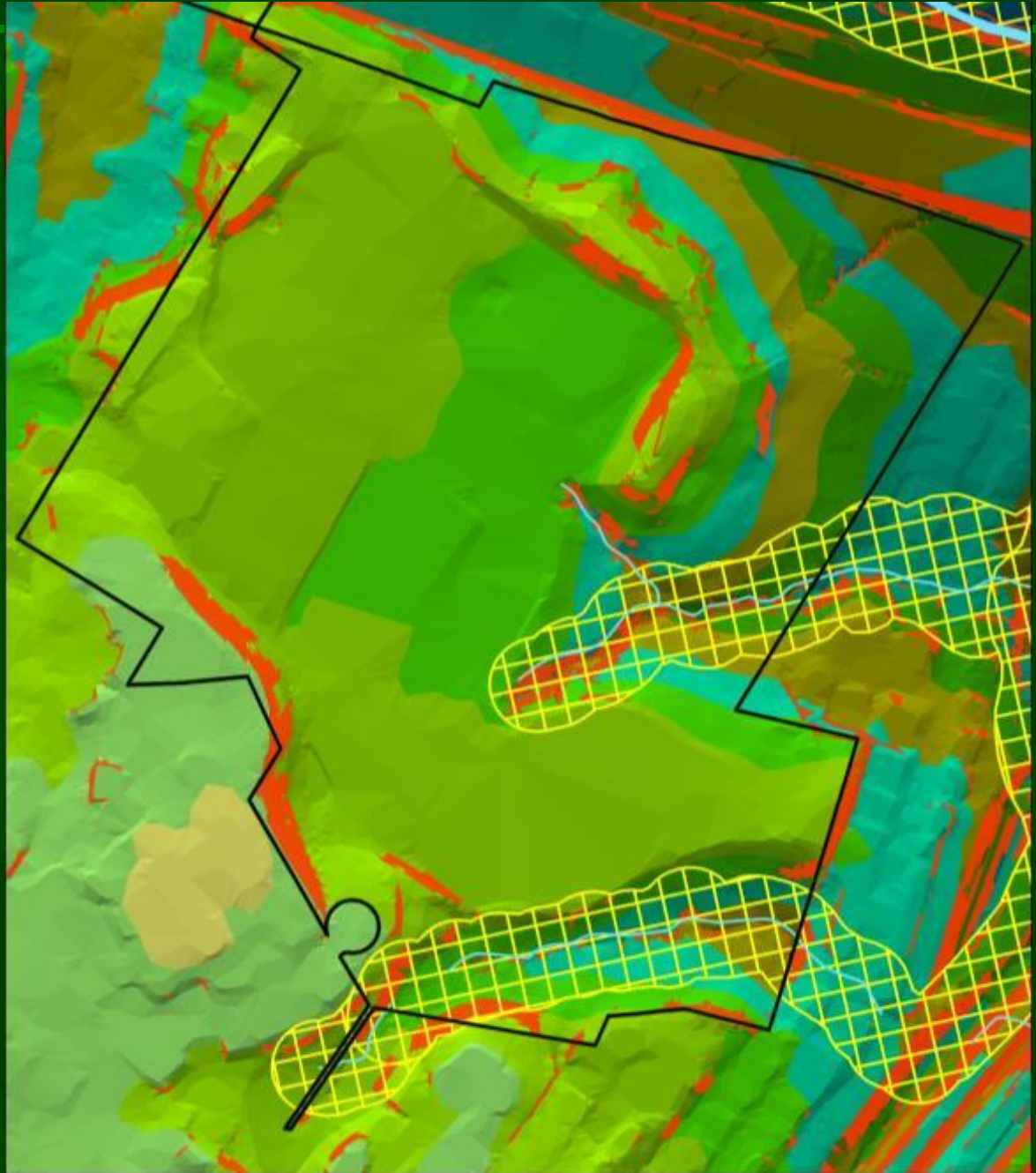
What Will Remain The Same



Park Rules

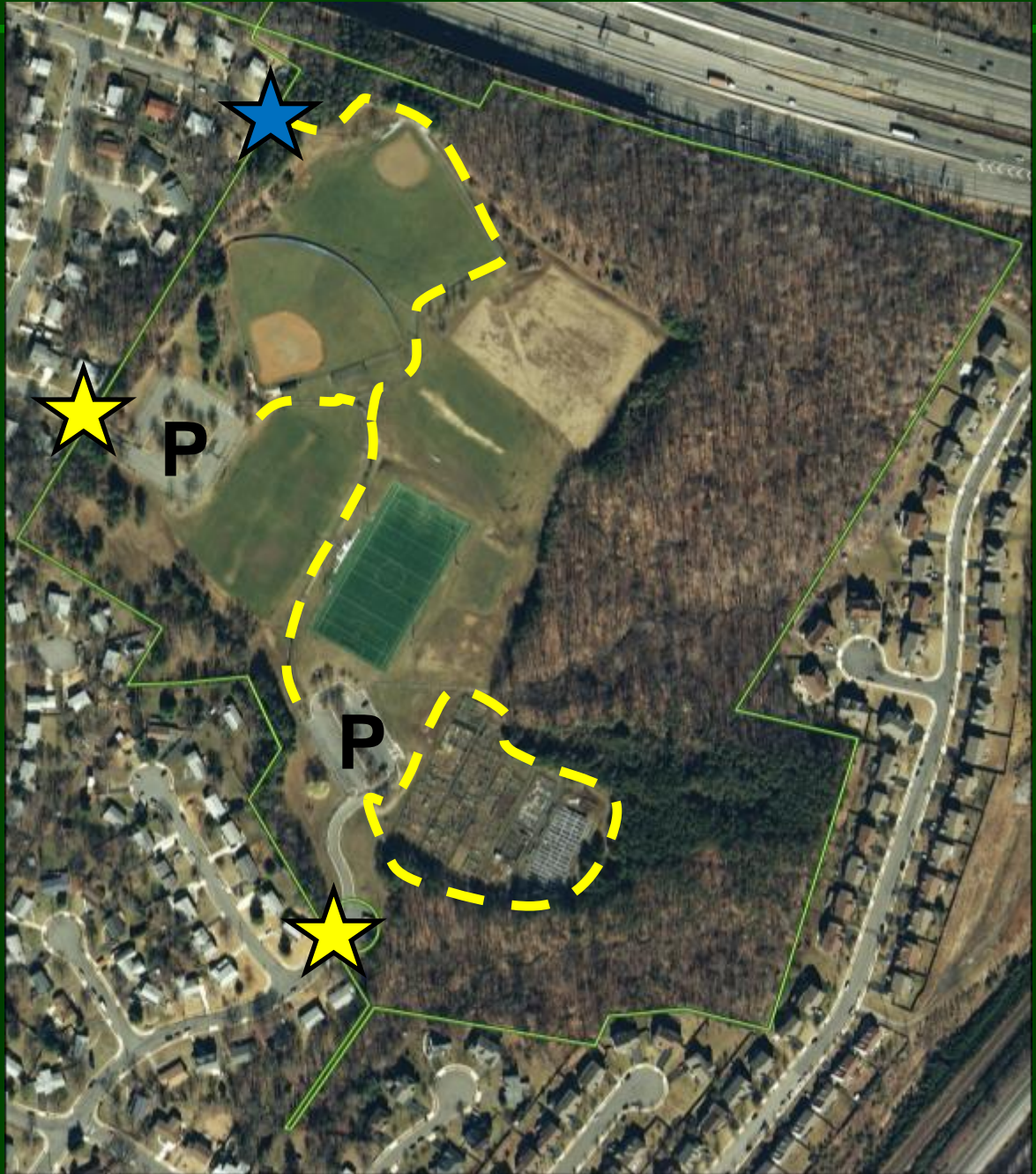


Resource Protection



What Will Remain The Same

-  **Park Rules**
-  **Resource Protection**
-  **Visitor Access**








What Will Remain The Same

-  **Park Rules**
-  **Resource Protection**
-  **Visitor Access**
-  **Existing Facilities**



What Will Remain The Same

-  **Park Rules**
-  **Resource Protection**
-  **Visitor Access**
-  **Existing Facilities**
-  **District Park Status**



Conceptual Development Plan – Features Retained



Rectangle Field



Conceptual Development Plan – Features Retained





Rectangle Field



Playground



Conceptual Development Plan – Features Retained

-  Rectangle Field
-  Playground
-  Picnic Area








Conceptual Development Plan – Features Retained

-  Rectangle Field
-  Playground
-  Picnic Area
-  Open Play Area



Conceptual Development Plan – Features Retained

-  Rectangle Field
-  Playground
-  Picnic Area
-  Open Play Area
-  Loop Trail



Conceptual Development Plan – Features Retained

-  Rectangle Field
-  Playground
-  Picnic Area
-  Open Play Area
-  Loop Trail
-  Expanded Parking



Conceptual Development Plan – Features Retained

-  Rectangle Field
-  Playground
-  Picnic Area
-  Open Play Area
-  Loop Trail
-  Expanded Parking
-  Resource Protection



Conceptual Development Plan – Upgrades



Existing Fields



Conceptual Development Plan – Upgrades

- 🛡️ **Newest Lighting Technology**
- 🛡️ **Address Light Trespass**
- 🛡️ **Full Cut Off Shields**
- 🛡️ **Web Based Controls**



Conceptual Development Plan – Upgrades



Existing Fields



Garden Plots







Conceptual Development Plan – Upgrades

-  Existing Fields
-  Garden Plots
-  Plant Nursery



Conceptual Development Plan – Upgrades

-  Existing Fields
-  Garden Plots
-  Plant Nursery
-  Parking Areas



Conceptual Development Plan – New Features



Off Leash Dog Area



Fitness Stations



Conceptual Development Plan – New Features

-  Off Leash Dog Area
-  Fitness Stations
-  Skate Spot








Conceptual Development Plan – New Features

-  Off Leash Dog Area
-  Fitness Stations
-  Skate Spot
-  Overlook



Conceptual Development Plan – New Features

-  Off Leash Dog Area
-  Fitness Stations
-  Skate Spot
-  Overlook
-  Vendor Pad



Conceptual Development Plan – New Features

- Off Leash Dog Area
- Fitness Stations
- Skate Spot
- Overlook
- Vendor Pad
- Flex Program Space



Conceptual Development Plan – New Features

- Off Leash Dog Area
- Fitness Stations
- Skate Spot
- Overlook
- Vendor Pad
- Flex Program Space
- Pedestrian Entrance



Conceptual Development Plan – New Features

- Off Leash Dog Area
- Fitness Stations
- Skate Spot
- Overlook
- Vendor Pad
- Flex Program Space
- Pedestrian Entrance
- Revegetation



Pedestrian Connectivity to Nearby Parks

- 🛡️ Franconia
- 🛡️ Monticello Woods
- 🛡️ Trailside
- 🛡️ Trail



Next Steps in Planning Process

30 Day Comment Period

Revise Plan as needed

Present to Park Authority Board For Action - Summer



Help Plan Your Park

Please visit our website:

<http://www.fairfaxcounty.gov/parks/plandev/franconia.htm>

Please send comments to:

By e-mail: parkmail@fairfaxcounty.gov

Old Fashioned Snail Mail:

Andy Galusha, Project Manager

Planning & Development Division, FCPA

12055 Government Center Parkway, Suite 406

Fairfax, Virginia 22035

Or By Phone:

Phone: 703-324-8702

