

Sanitary Sewer Impact Due to High-Density Growth

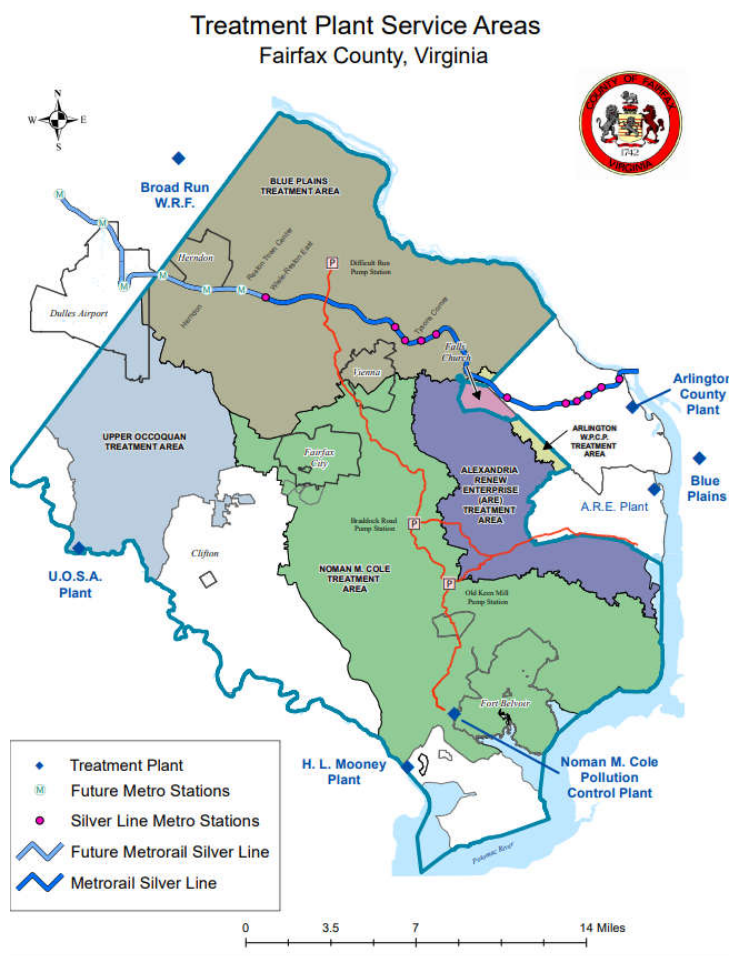
Wastewater Management Program
Wastewater Planning & Monitoring Division

Department of Public Works and Environmental Services
Working for You!



A Fairfax County, VA, publication
April 15, 2020

Background



- The northern portion of Fairfax County is conveyed by the Potomac Interceptor and wastewater treatment is provided by DC Water's Blue Plains Plant.
- Fairfax County is facing sewage treatment capacity limitations within Blue Plains Sewershed due to high-density growth along Silver Line - Tysons, Reston, and Herndon.

Background

- Fairfax will be diverting the excess flow from the Blue Plains Sewershed to the County's Noman Cole Treatment Plant by;
 - Rehabilitating the Difficult Run Pump Station (12 MGD)
 - Establishing Tysons East and Tysons West Pump Stations (25 MGD)
 - Rehabilitating Scotts Run Trunk Sewer and expanding Accotink Trunk Sewer
 - Continuously monitoring & maintaining existing 3,250 miles of sewer.



Tysons West Pump Station (conceptual)

High Density Growth Impact on Sanitary Sewer

- Sewage conveyance capacity of pipes and pump stations are also a concern; especially in the high-density redevelopment areas such as Tysons, Reston, and Route-1 Corridor.
- For any new and re-development, hydraulic capacity of the existing sewers need to be checked to ensure the existing infrastructure can convey the proposed development's flow.
- It's better to identify and address conveyance capacity limitations during Rezoning (planning phase) than wait until the Site Plan Submission (design phase). We need to work together early in the process to avoid surprises.



Eliminate Surprises through Industry Coordination

- Fairfax County Wastewater Staff's goal is to work together with industry early in the development planning process to avoid conveyance capacity limitations surprises.
- One way to effectively achieve this goal is to develop a checklist for Rezoning and Site Plan submissions that focuses on hydraulic capacity of wastewater infrastructure. Our plan is to actively engage with industry during this checklist development process.
- Wastewater staff are involved in the sanitary portion of the Land Development Process from rezoning to as-builts and are available to discuss your development's unique wastewater challenges.



Sewer Reimbursement – New Ideas?

- If existing infrastructure can't convey the flow from the proposed development; per PFM Chapter 10 – new sewers will need to be upsized to convey flow from the proposed development and Comprehensive Plan density of the sewershed.
- County's sewer reimbursement policy allows reimbursement for the expenses associated with constructing sewers greater than the proposed development requires. However, this policy appears to be ineffective due to lack of interest for many years.
- The County wants to work together with industry to make the Reimbursement Policy more practical. Please contact us! We are open to discuss any innovative reimbursement ideas.



Contact Information

- Please contact us for any Sewer questions;
- **Walk-in:**
[12000 Government Center Parkway, Suite 358, Fairfax, VA 22035](https://www.fairfaxcounty.gov/publicworks/wastewater)
- **Call:**
703-324-5015
- **Web:**
<https://www.fairfaxcounty.gov/publicworks/wastewater>
- **E-mail:**
William.Barrack@fairfaxcounty.gov; William (Bill) Barrack, Branch Chief
Sharad.Regmi@fairfaxcounty.gov; Sharad Regmi, Senior Engineer

Thank you!!!

