

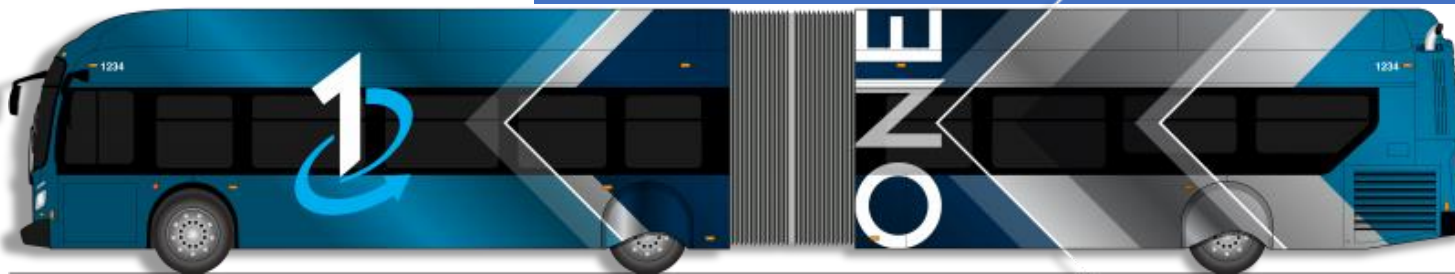
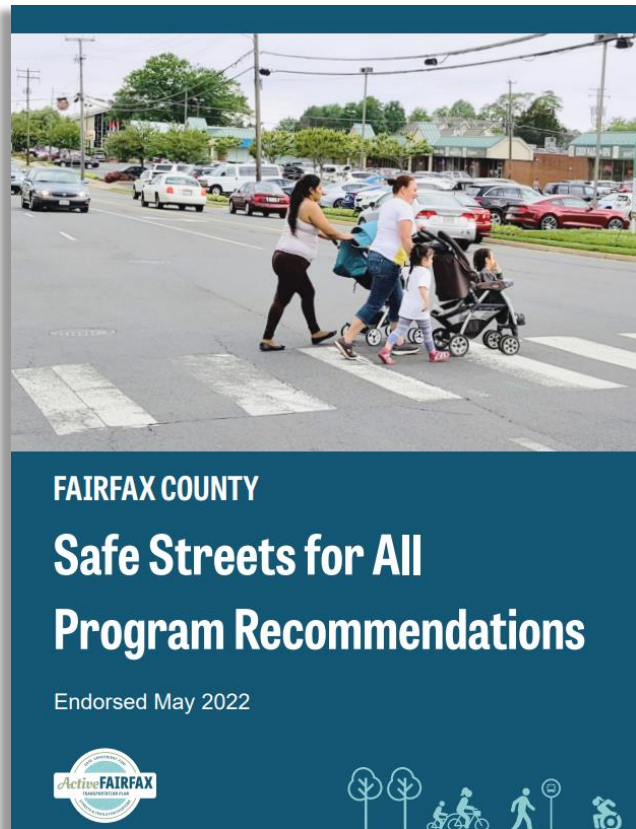
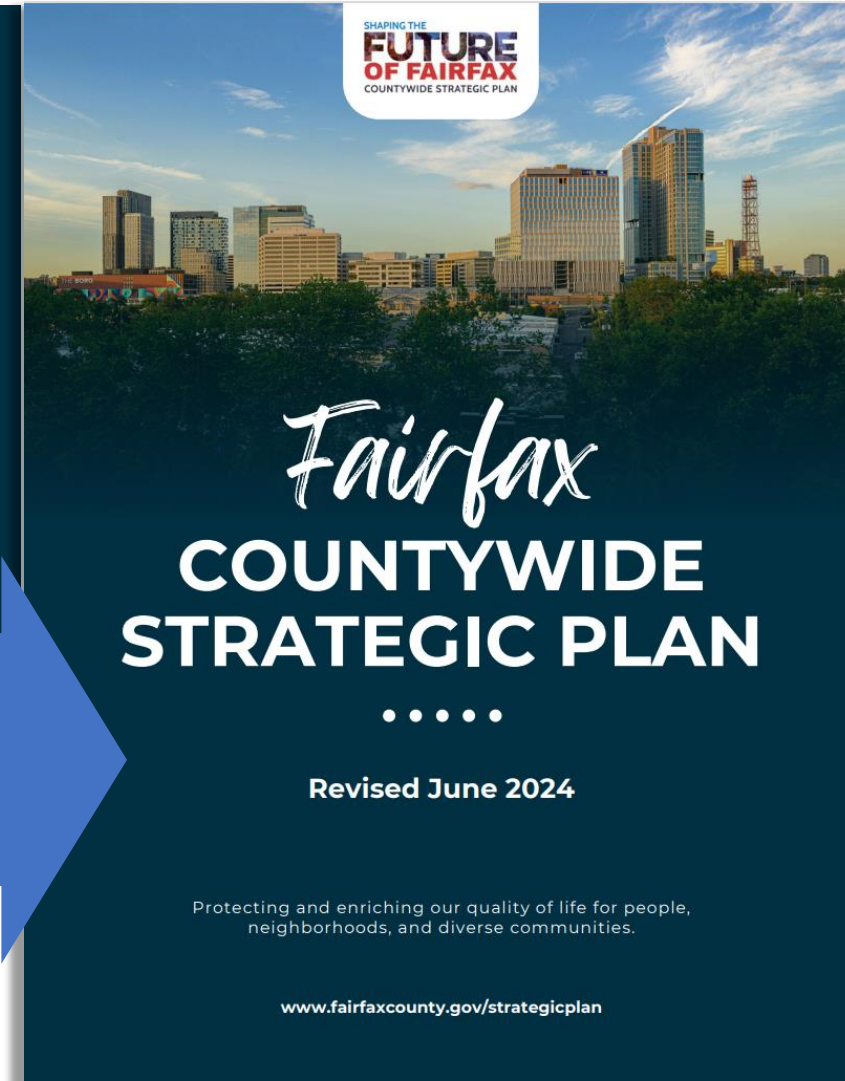


Alternative Measures of Effectiveness (AMOE) & Comprehensive Transportation Analyses (CTA)

Purpose and Need

- Provide multimodal analyses
- Identify tradeoffs between modes
- Facilitate conversations on the importance of mobility options
- Avoid framing outcomes and solutions only in terms of vehicular/traffic impacts
- Allow for flexibility and adaptability

MT 3. Revise the methodology of how transportation impacts are assessed by transitioning from the automobile-focused level of service methodology to a multi-modal approach



Process Outline

Context-Sensitive Approach

Area Type

Modal Priority

Area 1

Urban Centers and
Transit Station Areas



Area 2

Suburban Centers and
Community Business Centers



Area 3

Suburban Neighborhoods



Area 4

Low-Density Residential



Area 5

Industrial Areas



Project Type

Zoning Action



Comprehensive Plan



Corridor Study



Framework
of Measures
and
Thresholds

Transportation
Study Impacts
Meet Thresholds

**Study
Approved**

Transportation
Study Impacts
Exceed Thresholds

**Develop
Mitigation
Package**

Operational Analyses

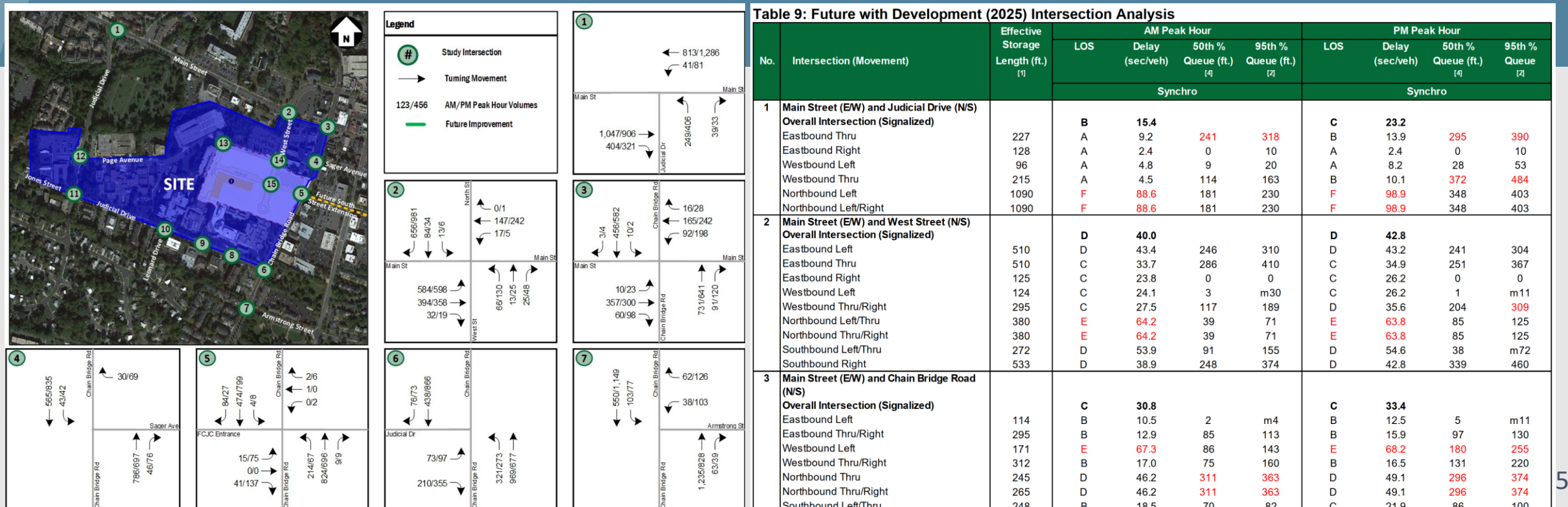
(Up until June 2022)

- Applicant submits determination
 - If under 2,500 ADT, no study required*
 - If between 2,500 – 4,999 ADT, submit an Operational Analysis
- Operational Analyses were solely vehicular focused and mirrored old VDOT requirements and parameters looking at LOS and queuing



Operational Analyses

(*images from previous slide added to this slide to account for sharing as pdf*)



CTA Phase 1

(June 2022 – September 2024)

- Submit determination
 - If under 2,500 ADT, no study required*
 - If between 2,500 – 4,999 ADT, submit a CTA
- CTA's assess vehicular (auto), bicycle, pedestrian, and transit conditions, impacts, and needs





CTA Phase 1

(*images from previous slide added to this slide to account for sharing as pdf*)

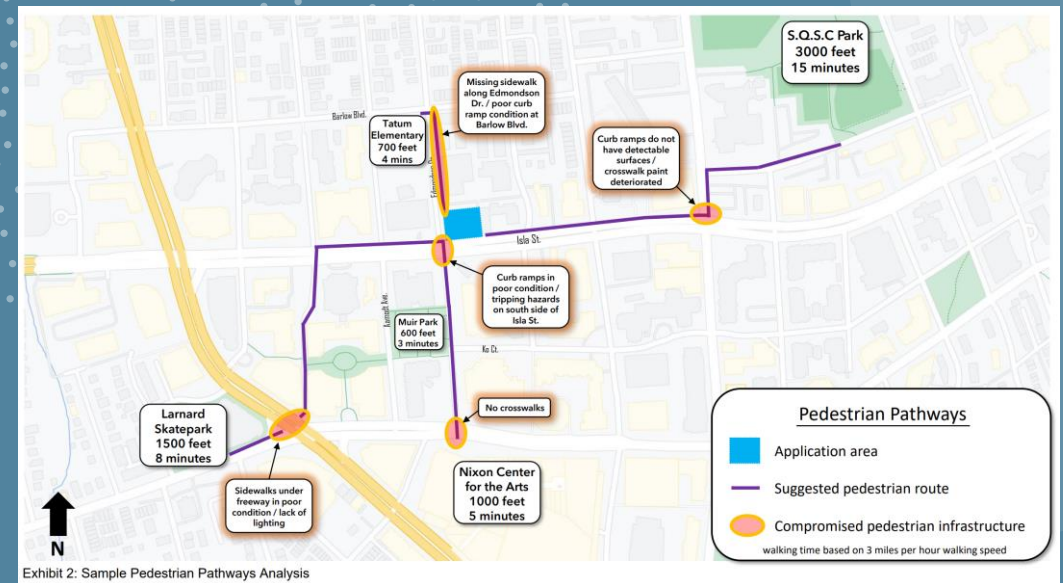


Exhibit 2: Sample Pedestrian Pathways Analysis

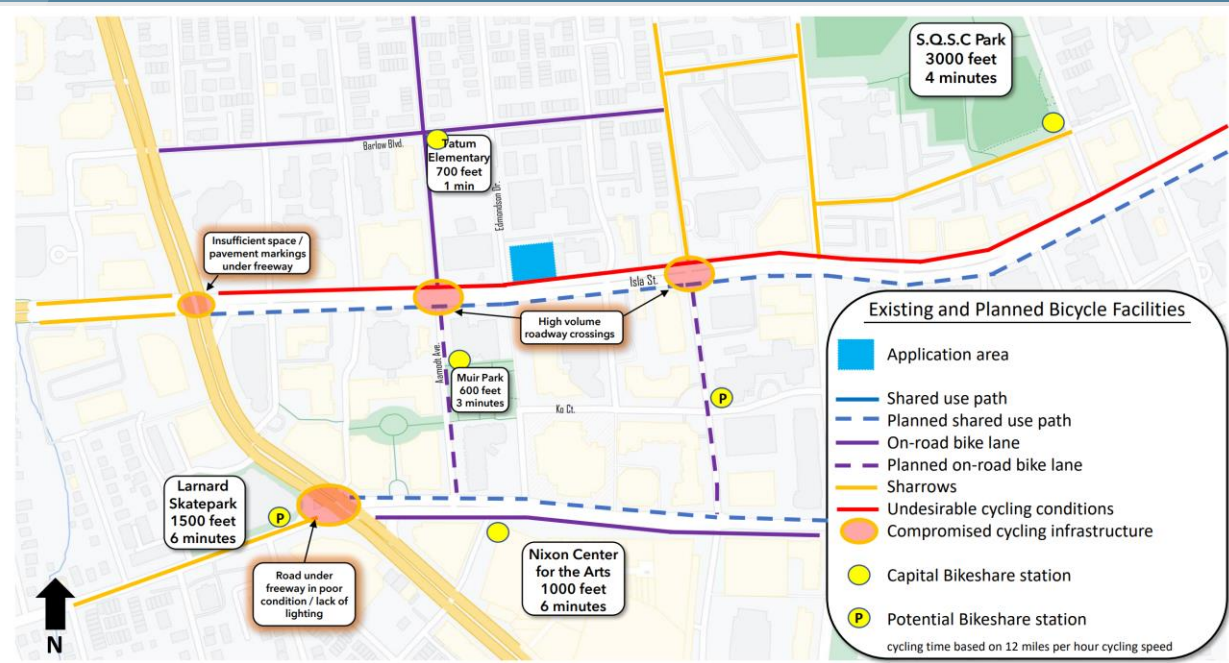


Exhibit 3: Sample Bicycle Infrastructure Analysis

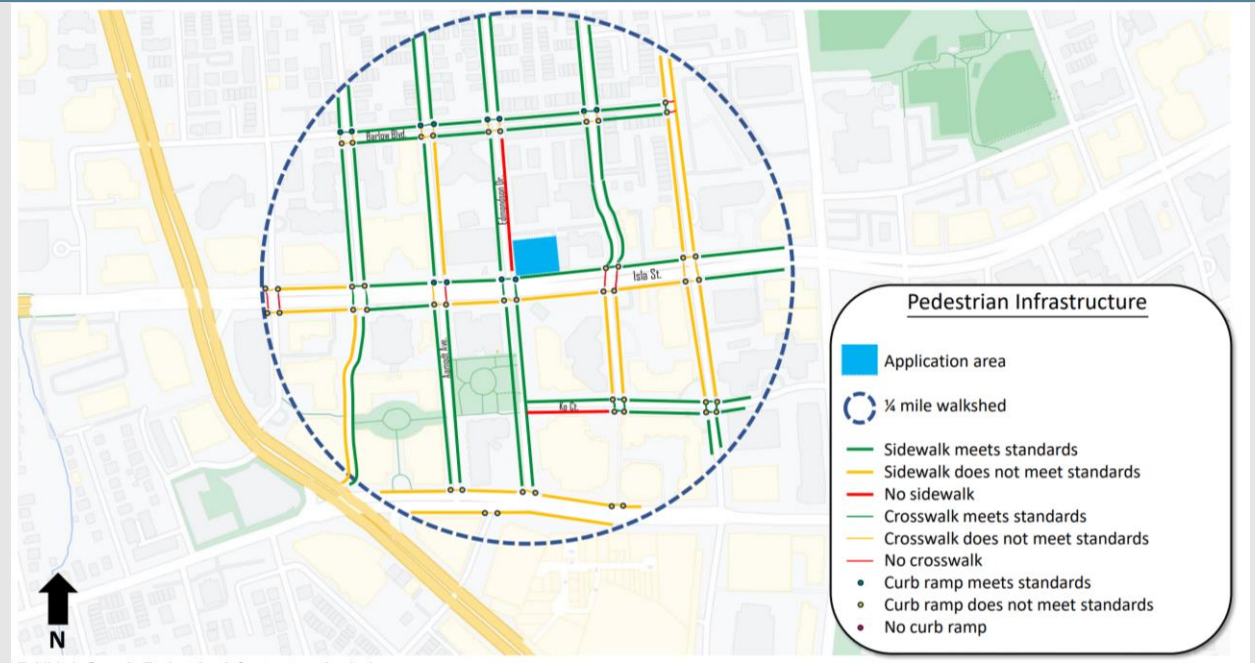


Exhibit 1: Sample Pedestrian Infrastructure Analysis

CTA Phase 2

(September 2024 moving forward)

- Submit determination
 - If under 1,000 ADT, submit Tier 1 Transportation Statement
 - If between 1,000 – 2,999 ADT, submit Tier 2 CTA
 - If between 3,000 – 4,999 ADT, submit Tier 3 CTA



What does each tier include?

Analysis Elements	Tier 1 Transportation Statement (999 or fewer ADT*)	Tier 2 CTA-Z (1000-2999 ADT*)	Tier 3 CTA-Z (3000-4999 ADT*)
Scoping		X	X
Site Description and Proposal	X	X	X
Description of Vehicular and Pedestrian Access	X	X	X
Trip Generation or Approximate Number of Employees/Residents/Students/Customers/etc.	X	X	X
Prior Site Transportation Mitigations and Agreements, if applicable	X	X	X
Proffered or Planned Transportation Improvements at Adjacent Intersections	X	X	X
Qualitative Description of Vehicular, Accessible, and Bicycle Parking	X	X	X
Site Access/Perimeter Vehicular Analysis		X	X
Non-Auto Assessment		X	X
Additional Study Intersections for Vehicular Analysis			X

The Evolution of the Determination Process

Pre-June 2022

A Ch 870 TIA is required for the proposed application to redevelop the Fairfax County Judicial Complex site with approximately 1,419,343 square feet (SF) of government office, 540,500 SF of general office, and 250 multifamily units located north of Judicial Drive, west of Chain Bridge Road, and south of Main Street (Tax Map 57-3 ((1)) 17, and 57-4 ((1)) 14).

Additional review by Fairfax County Transportation (FCDOT) will occur once Zoning distributes the case to county agencies. If additional transportation issues need to be addressed/discussed, Transportation and Zoning will coordinate and contact you.

Please include this email correspondence with your application submittal. I am including Zoning staff for notification purposes.

The Evolution of the Determination Process

June 2022 – September 2024

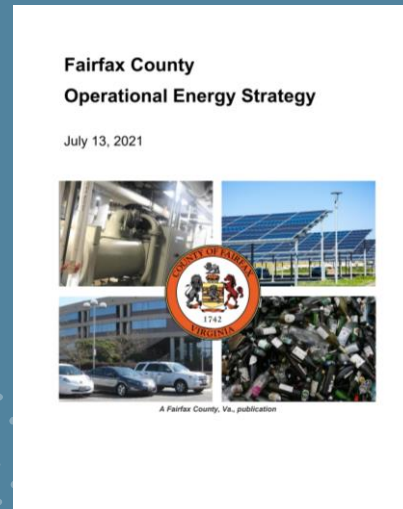
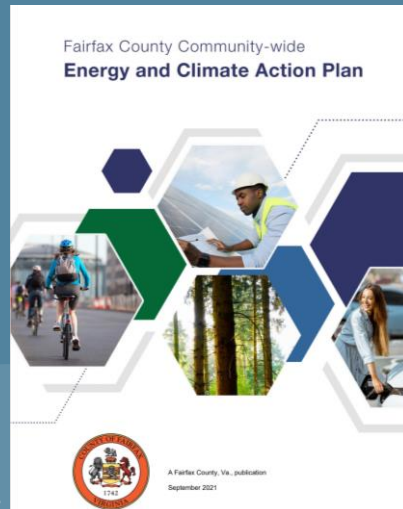
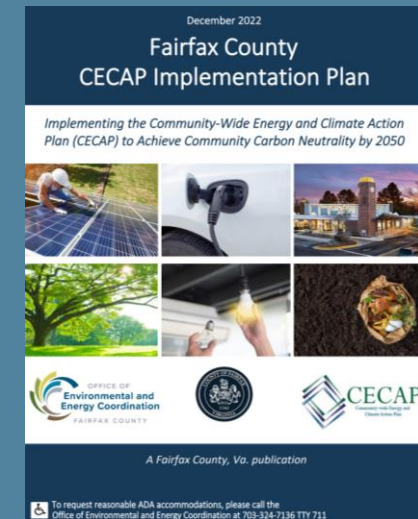
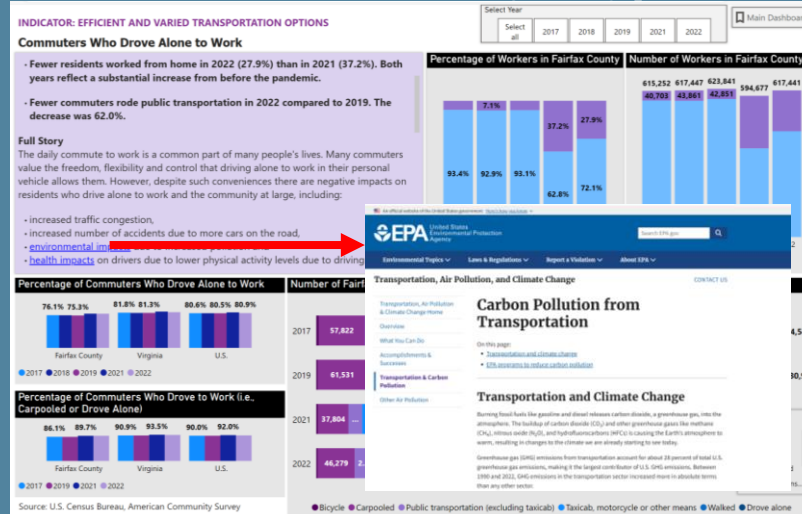
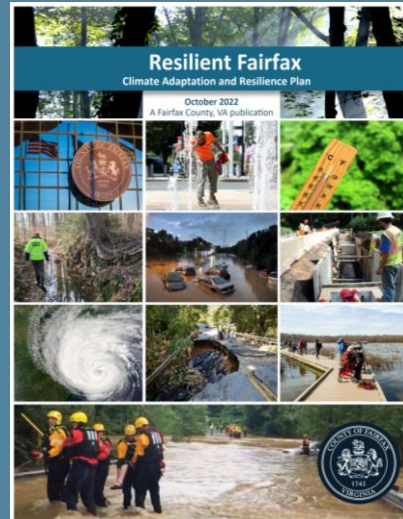
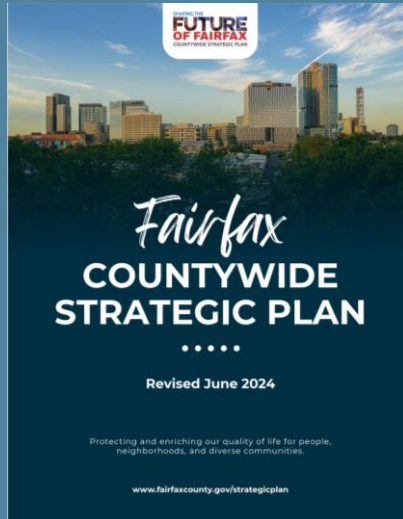
FCDOT Transportation Study Determination		
Determination Request	Scotts Run South – Westgate Block	
Tax Map	30-3 ((28)) (2) 1	
Proposal	<p>The applicant has proposed the following options to amend a current approval for approximately 405,000 square feet (SF) of office space and 9,720 SF of retail:</p> <ul style="list-style-type: none">• Option 1 Allow for up to 275 high-rise multifamily dwelling units, 20,846 SF of retail space, 139 hotel rooms, and 124 hotel suite rooms• Option 2 Allow for up to 260,000 SF of office space, 19,846 SF of retail space, 139 hotel rooms, and 124 hotel suite rooms	
Location/Address	South of Dolley Madison Boulevard, west of Anderson Road, north of Chain Bridge Road and east of Dartford Drive	
Log Number	25-016	
Date Received	4/5/2023	
Study Required		No Study Required*
Chapter 870 Traffic Impact Analysis (TIA)	Comprehensive Transportation Analysis (CTA)	
X		

The Evolution of the Determination Process

September 2024 - forward

FCDOT Transportation Study Determination			
Determination Request	Prosperity Merrifield		
Tax Map	49-1 ((19)) 1, 2, 3, 4, A, C, E2, F1, F2, F3, F4, and G		
Proposal	Remove 677,298 square feet (SF) of office, warehouse, and research and development space and redevelop with up to the following: <ul style="list-style-type: none">• 1,471 mid-rise multifamily dwelling units (DU)• 328 single family attached DU *There is an option to retain up to 123,482 SF of office space in lieu a portion of the proposed mid-rise multifamily DU		
Location/Address	North of Hilltop Road, south of Interstate 66, and west of Dorr Avenue		
Log Number	24-043		
Date Received	09/04/24		
Net CO ² Emissions	15,863 Kg		
Tier 1	Tier 2	Tier 3	Chapter 870 Traffic Impact Analysis (TIA)
Transportation Statement	Comprehensive Transportation Analysis - Zoning (CTA-Z)		
			X

Where did this step emanate from?





Questions about CTA? Contact Jeremy Ko. Please visit our website via the link below or simply Google “FCDOT Transportation Analysis”

[Transportation Analysis | Transportation \(fairfaxcounty.gov\)](https://www.fairfaxcounty.gov/transportation-analysis)

Questions about AMOE? Contact Tim Kutz

Questions about the County’s plans for reducing undesirable environmental impacts? Check out the plans, policies, and tools mentioned on the previous slide (all are available on the County’s website).