



CENTREVILLE PLANNING STUDY

Fairfax County Planning & Development

WELCOME & INTRODUCTIONS



CENTREVILLE
PLANNING STUDY

WHAT IS THE CENTREVILLE PLANNING STUDY?

The Centreville Planning Study is an opportunity to **update the county's policies for future growth** in the area.



CENTREVILLE
PLANNING STUDY

WHY CENTREVILLE? WHY NOW?

Current Plan priorities were crafted over 30 years ago. Centreville is one of the few remaining community centers to have not been reviewed since that time.



CENTREVILLE
PLANNING STUDY



Centre Heights

London Towne

Uniontown

Centreville

Centreville Farms

Willow Springs

Crystal Springs

Draft Guiding Principles

- *“Provide a variety of accessible public spaces where people can gather, unify communities of Centreville and enhance access to services and amenities.”*
- *“Celebrate Centreville’s diversity by valuing and developing diverse spaces.”*
- *“Promote environmental sustainability and protection, including enhanced stormwater management and by increasing tree canopy.”*
- *“Develop a vibrant town center with a mix of housing and commercial uses in a pedestrian-friendly form that includes public gathering spaces.”*



CENTREVILLE
PLANNING STUDY


Draft Guiding Principles

- *“Meet a continuum of housing needs that supports a diverse, socio-economic community, and workforce, allows for aging in place, and accommodates all abilities.”*
- *“Provide a safe, multi-modal transportation network that prioritizes alternative modes travel, connects people to services and amenities and allows people to meet their daily needs and wants.”*
- *“Provide for a variety of accessible community institutional spaces and parks with active recreation, green space, and trails.”*
- *“Identify, foster, celebrate, and preserve historical and cultural sites, landmarks, and resources in Centreville.”*



CENTREVILLE
PLANNING STUDY

WORKSHOP OVERVIEW



Work together in a series of small group exercises to identify how future growth is shaped in Centreville.



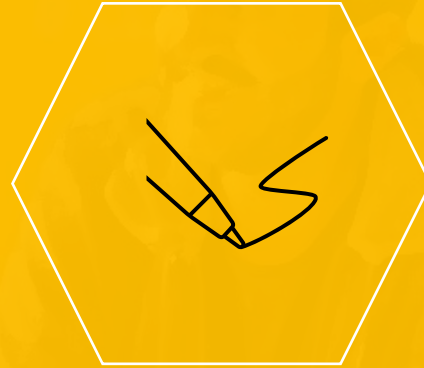
CENTREVILLE
PLANNING STUDY

The Centreville of tomorrow needs your ideas today!

WORKSHOP OVERVIEW



Talk



Draw



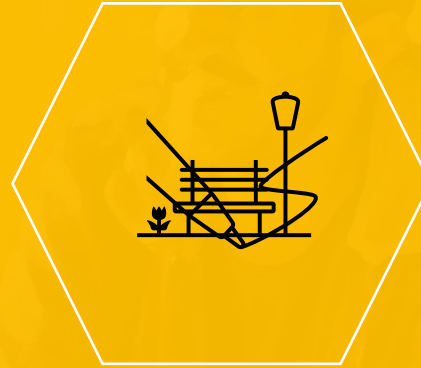
Visualize

The Centreville of tomorrow needs your ideas today!

WORKSHOP OVERVIEW



Land Use



**Parks &
Cultural
Resources**



Transportation

Group Vision Board

By the end of today's exercise, each group will compile their ideas and visual preferences on to a Vision Board. The Boards along with table notes will help the task force and staff consider new Comprehensive Plan recommendations.



Working Map

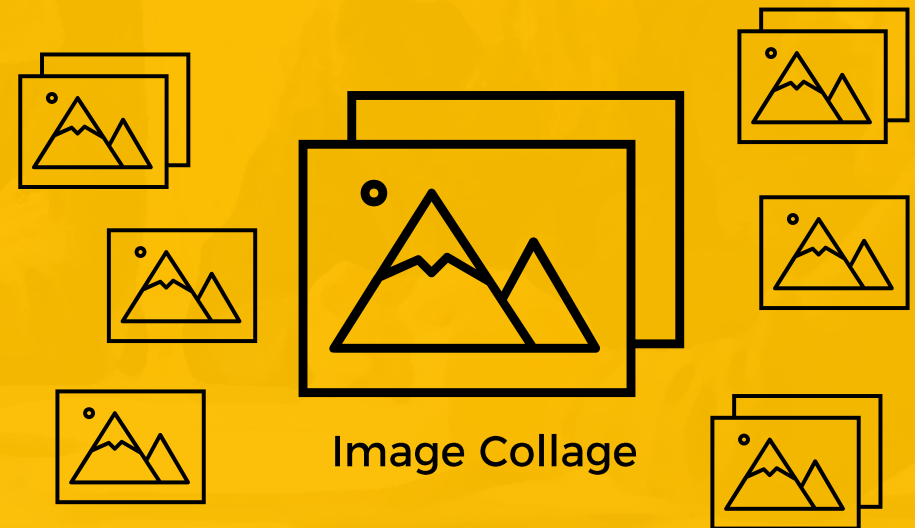
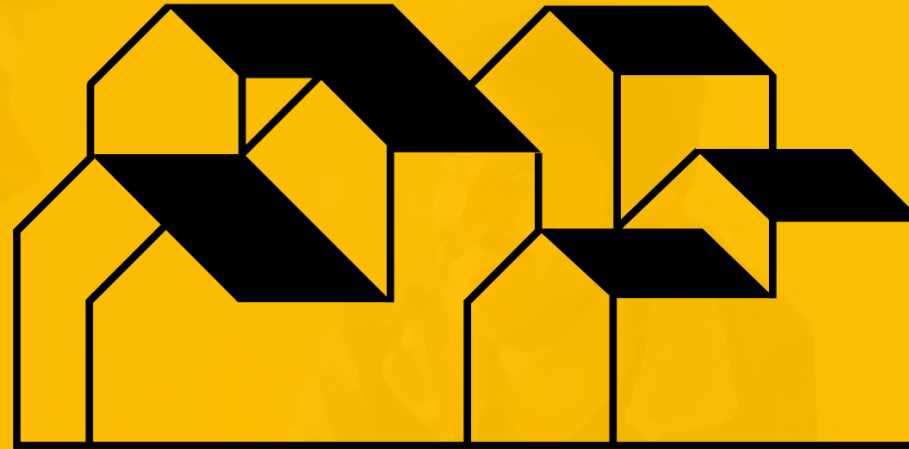


Image Collage





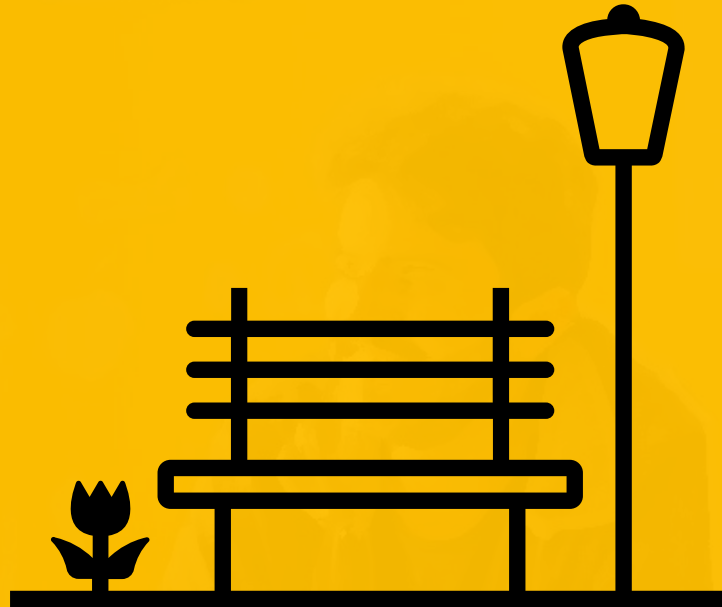


Future Buildings & Uses

What new types of places would you like to see in Centreville? What new types of housing? Consider activities and service unavailable in Centreville today.

5 mins left

Thank you!



Parks and Heritage Resources

What types of parks spaces do you enjoy visiting? Are they nearby? Are they accessible?

5 mins left

Thank you!



Getting Around

What's it like to get around Centreville? What would make walking, cycling, or public transit more appealing?



What did you discover?
Share your thoughts!

What's Next?



CENTREVILLE
PLANNING STUDY



Task Force



Staff



CENTREVILLE
PLANNING STUDY

The community input captured today will be used by the Centreville Study Task Force and county staff to draft new policy recommendations.



Task Force



Staff



Community



CENTREVILLE
PLANNING STUDY

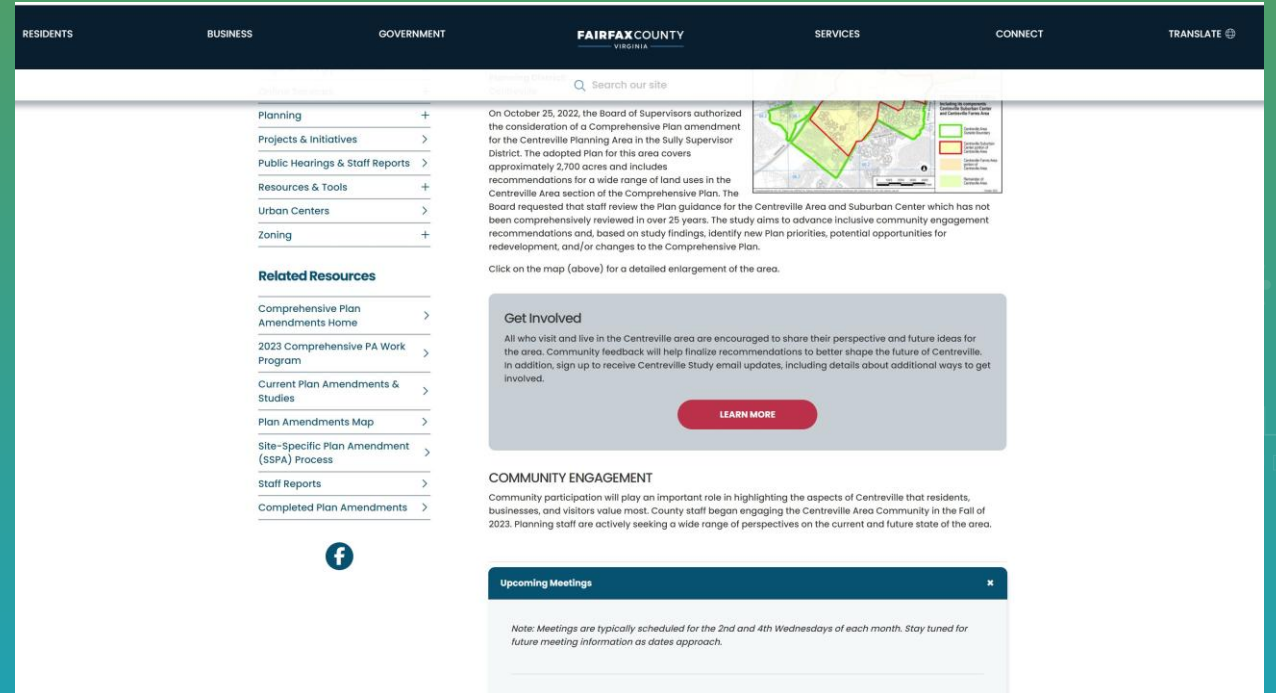
Once new Plan recommendations are drafted an additional community meeting will be held to engage the community for feedback.

STUDY WEBPAGE



[Bit.ly/CentrevillePlanStudy](https://bit.ly/CentrevillePlanStudy)

Fairfax County Planning & Development



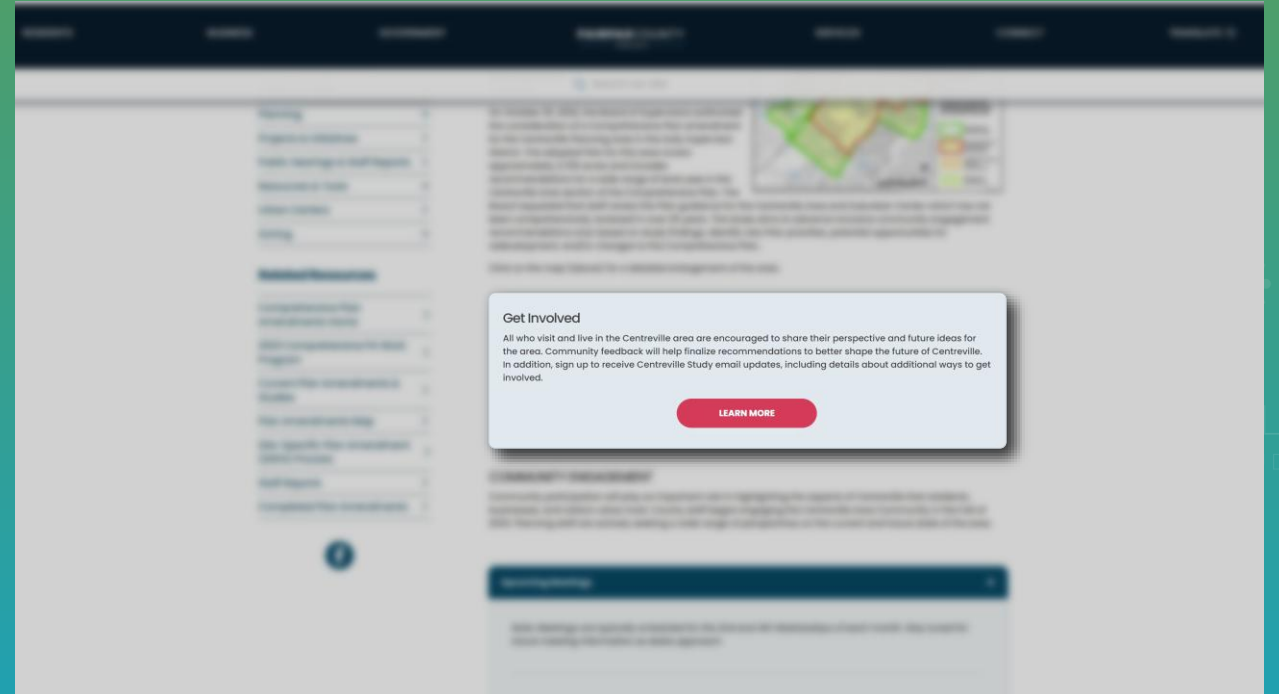
Stay up to date!

STUDY WEBPAGE

STUDY WEBPAGE 1



[Bit.ly/CentrevillePlanStudy](https://bit.ly/CentrevillePlanStudy)



Under “**Get Involved**” select “**Learn More**” and sign up to receive study notifications!

Reach out to staff directly!

michael.burton@fairfaxcounty.gov

Department of Planning & Development
(703)324-1380



CENTREVILLE
PLANNING STUDY