

AN AMENDMENT TO  
**THE COMPREHENSIVE PLAN  
AND THE POLICY PLAN  
FOR FAIRFAX COUNTY, VIRGINIA  
2013 EDITION**

**GENERAL LOCATION:** Countywide

**PARCEL LOCATION:** All

**PLANNING AREA AND DISTRICT:** All

**SUPERVISOR DISTRICT:** All

**ADOPTED:** September 20, 2016    **ITEM NO.** 2013-CW-8CP

FOR ADDITIONAL INFORMATION CALL (703) 324-1380

**MAP NOT APPLICABLE**

**AMENDMENT TO THE COMPREHENSIVE PLAN (2013 EDITION)**

The following changes to the Comprehensive Plan have been adopted by the Board of Supervisors. To identify changes from the previously adopted Plan, new text is shown as underlined and deleted text is shown with a ~~strike through~~. Modifications indicated as \*, N, V, or H refer to a legend that appears in each table as follows:

- \* indicates demolition: potential remains for archaeological site.
- N National Register of Historic Places
- V Virginia Landmarks Register
- H Historic Overlay District
- L National Historic Landmark

**MODIFY**

**FIGURE:** Fairfax County Comprehensive Plan, 2013 Edition, Area I, Annandale Planning District as amended through 10-20-2015; Overview, Heritage Resources, Figure 4, “Inventory of Historic Sites, Annandale Planning District,” page 9, as follows:

**FIGURE 4**  
**INVENTORY OF HISTORIC SITES**  
**ANNANDALE PLANNING DISTRICT**  
**(Inventory as of ~~2013~~ 2015)**

REVISION OF HEADER ONLY – NO CHANGES WILL BE MADE TO THE ACTUAL TABLE.

**MODIFY**

**FIGURE:** Fairfax County Comprehensive Plan, 2013 Edition, Area I, Baileys Planning District as amended through 10-20-2015; Overview, Heritage Resources, Figure 4, “Inventory of Historic Sites, Baileys Planning District,” page 9, as follows:

**FIGURE 4**  
**INVENTORY OF HISTORIC SITES**  
**BAILEYS PLANNING DISTRICT**  
**(Inventory as of ~~2013~~ 2015)**

REVISION OF HEADER ONLY – NO CHANGES WILL BE MADE TO THE ACTUAL TABLE.

**MODIFY  
FIGURE:**

Fairfax County Comprehensive Plan, 2013 Edition, Area I, Jefferson Planning District as amended through 10-20-2015; Overview, Heritage Resources, Figure 4, “Inventory of Historic Sites, Jefferson Planning District,” pages 8-9, as follows:

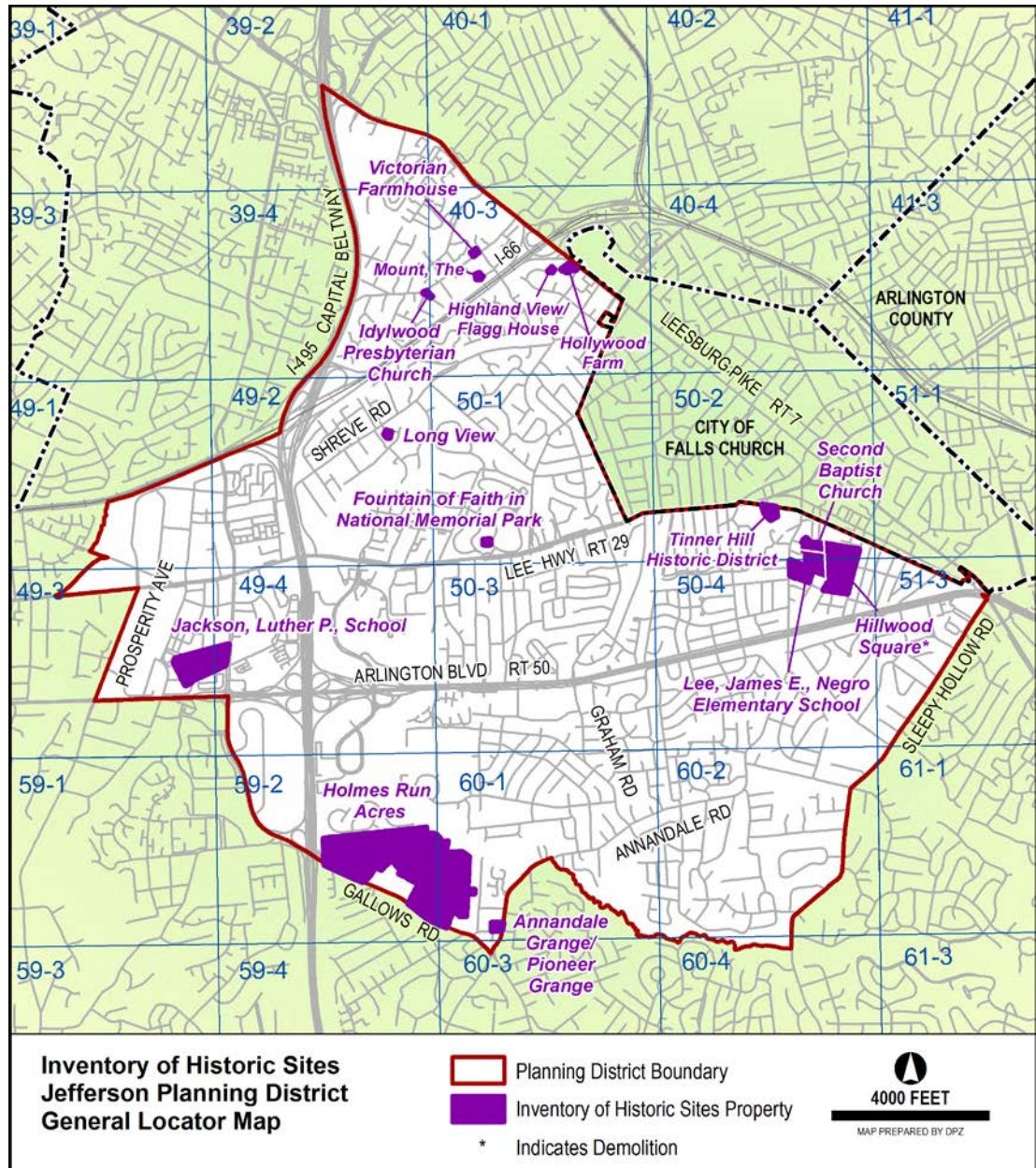
**FIGURE 4  
INVENTORY OF HISTORIC SITES  
JEFFERSON PLANNING DISTRICT  
(Inventory as of ~~2013~~ 2015)**

Add the below site to the table in alphabetical order:

<b>Name</b>	<b>Location</b>	<b>Planning Sector</b>	<b>Parcel Number</b>	<b>Date</b>
<u>Tinner Hill Historic District</u>	<u>106-120 Tinner Hill Road Falls Church</u>	<u>J1</u>	<u>50-2 ((7)) 1, 2, 3, 4, 4A, 4B, 6, 7, 8, 8A, 9</u>	<u>c. 1900- 1940</u>

**MODIFY  
FIGURE:**

Fairfax County Comprehensive Plan, 2013 Edition, Area I, Jefferson Planning District as amended through 10-20-2015; Overview, Heritage resources, Figure 5, "Inventory of Historic Sites, Jefferson Planning District, General Locator Map" page 10, to depict the addition of the Tinner Hill Historic District:



**MODIFY**

**FIGURE:** Fairfax County Comprehensive Plan, 2013 Edition, Area I, Lincolnia Planning District as amended through 10-20-2015; Overview, Heritage Resources, Figure 4, “Inventory of Historic Sites, Lincolnia Planning District,” page 9, as follows:

**FIGURE 4**  
**INVENTORY OF HISTORIC SITES**  
**LINCOLNIA PLANNING DISTRICT**  
**(Inventory as of ~~2013~~ 2015)**

REVISION OF HEADER ONLY – NO CHANGES WILL BE MADE TO THE ACTUAL TABLE.

**MODIFY**

**FIGURE:** Fairfax County Comprehensive Plan, 2013 Edition, Area II, Fairfax Planning District as amended through 10-20-2015; Overview, Heritage Resources, Figure 4, “Inventory of Historic Sites, Fairfax Planning District,” page 10, as follows:

**FIGURE 4**  
**INVENTORY OF HISTORIC SITES**  
**FAIRFAX PLANNING DISTRICT**  
**(Inventory as of ~~2013~~ 2015)**

Modify the below site in the table as follows:

<b>Name</b>	<b>Location</b>	<b>Planning Sector</b>	<b>Parcel Number</b>	<b>Date</b>
Fairfax Villa Community Park	East of Shirley Gate Road between Lee Highway and Braddock Road, Fairfax	F7	56-4 ((6)) A, 39, 40, 41, 42, 87A; 57-3 ((1)) 1, 2; 57-3 ((7)) A1	c. 5000 BCE – Early 20 <sup>th</sup> century

**MODIFY**

**FIGURE:** Fairfax County Comprehensive Plan, 2013 Edition, Area II, McLean Planning District as amended through 10-20-2015; Overview, Heritage Resources, Figure 4, “Inventory of Historic Sites, McLean Planning District,” pages 9-13, as follows:

**FIGURE 4**  
**INVENTORY OF HISTORIC SITES**  
**MCLEAN PLANNING DISTRICT**  
**(Inventory as of ~~2013~~ 2015)**

Add the below site to the table in alphabetical order:

<b>Name</b>	<b>Location</b>	<b>Planning Sector</b>	<b>Parcel Number</b>	<b>Date</b>
<u>Mackall-Hall House</u>	<u>1011 Turkey Run Road,</u> <u>McLean</u>	<u>M5</u>	<u>22-3 ((1)) 50,</u> <u>51</u>	<u>c. 1850-</u> <u>1890</u>

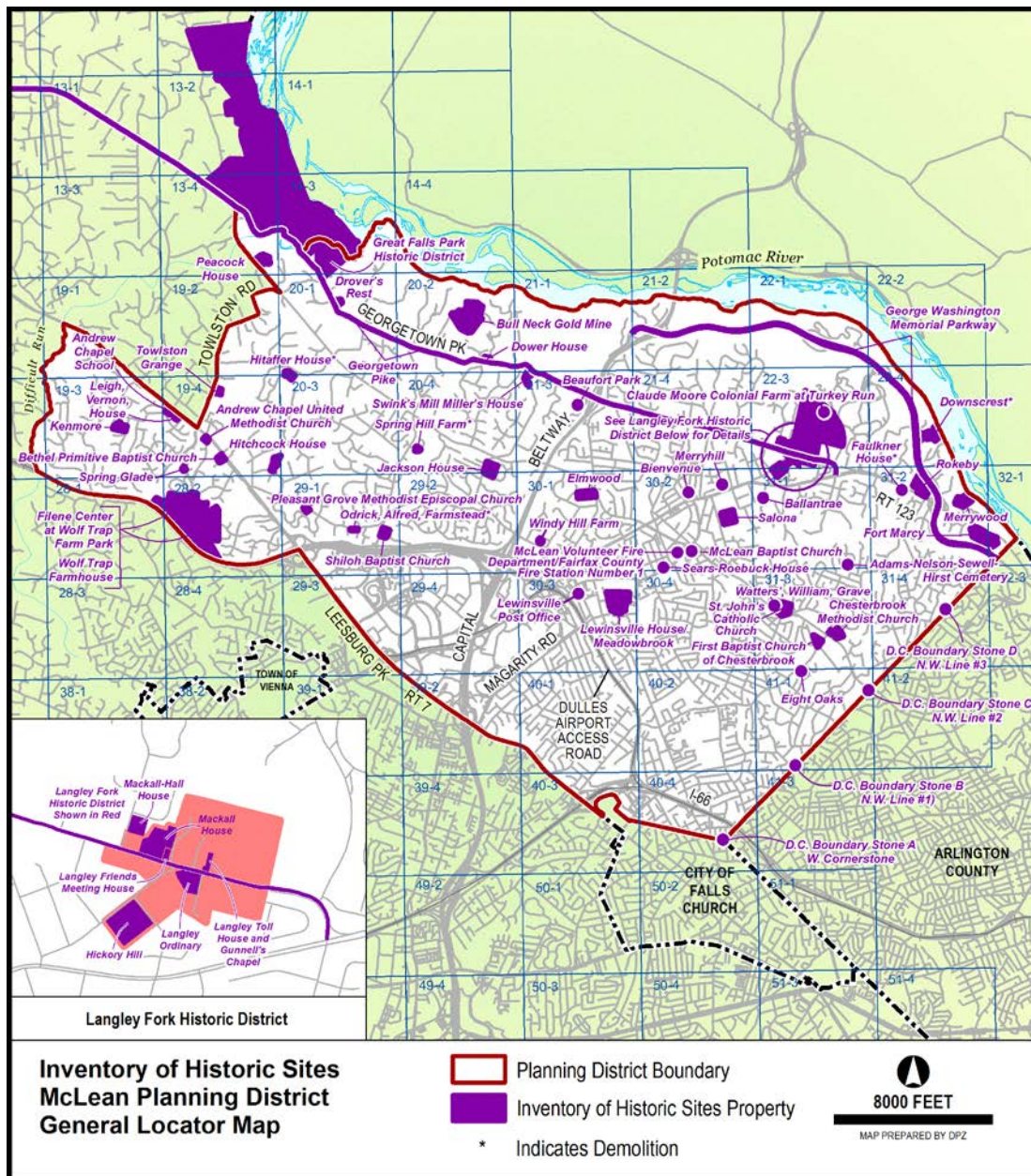
Modify the below sites in the table as follows:

<b>Name</b>	<b>Location</b>	<b>Planning Sector</b>	<b>Parcel Number</b>	<b>Date</b>
Spring Hill Farm* <u>N</u> , V	8116 Spring Hill Farm Drive McLean	M6	20-4 ((33)) 13A	c. 1822
Great Falls Park Historic District <sup>1</sup> <u>N</u> , V	9200 Old Dominion Drive McLean	M5	8-4 ((12)) 3A1, 13-2 ((1)) 35	c. 6,000 BCE-1968



**MODIFY  
FIGURE:**

Fairfax County Comprehensive Plan, 2013 Edition, Area II, McLean Planning District as amended through 10-20-2015; Overview, Heritage Resources, Figure 5, "Inventory of Historic Sites, McLean Planning District, General Locator Map" page 14, to depict the addition of the Mackall-Hall House, and to add an asterisk after Spring Hill Farm to denote its demolition.



**MODIFY**

**FIGURE:** Fairfax County Comprehensive Plan, 2013 Edition, Area II, Vienna Planning District as amended through 10-20-2015; Overview, Heritage Resources, Figure 4, “Inventory of Historic Sites, Vienna Planning District,” page 9, as follows:

**FIGURE 4**  
**INVENTORY OF HISTORIC SITES**  
**VIENNA PLANNING DISTRICT**  
**(Inventory as of ~~2013~~ 2015)**

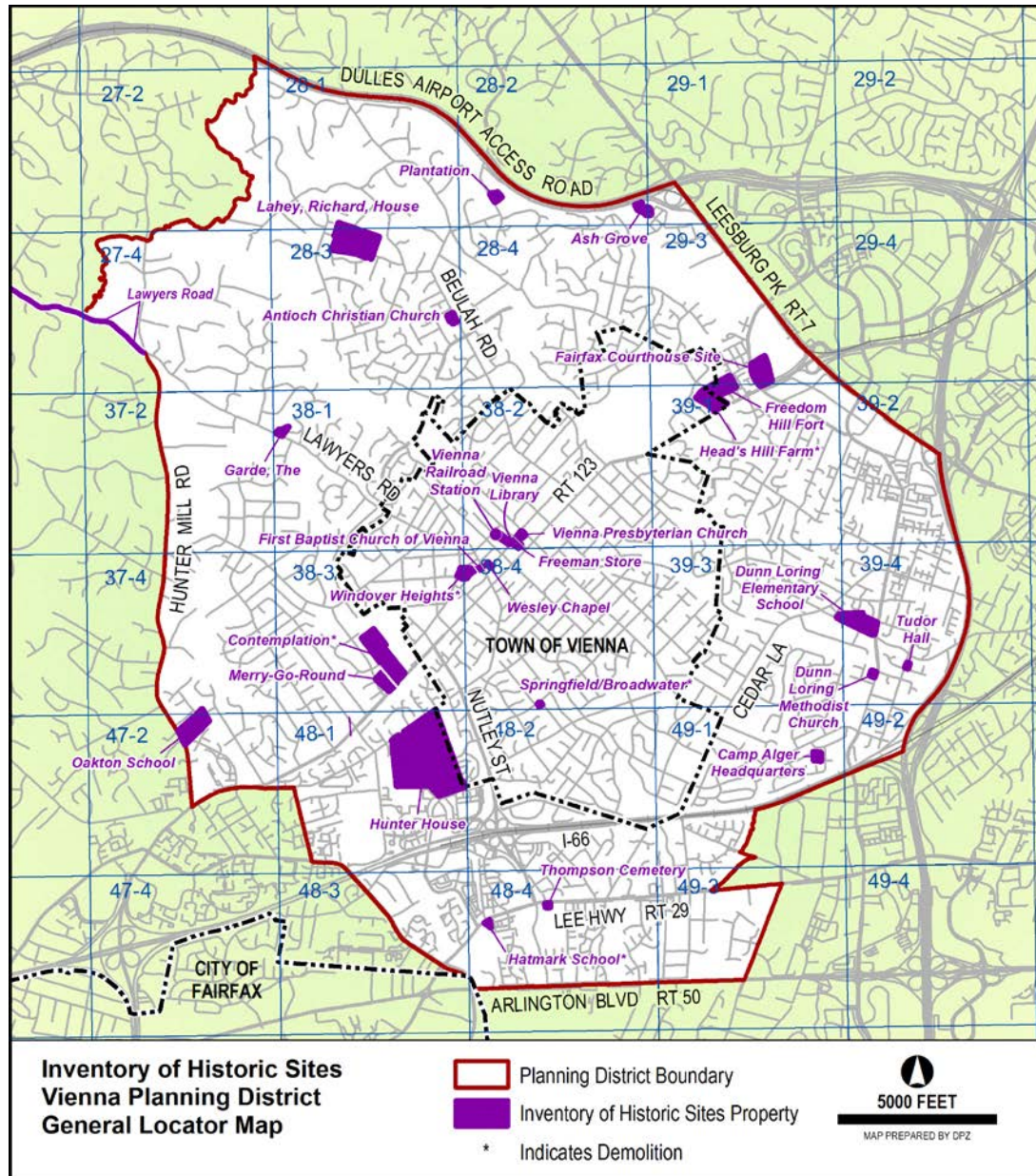
Modify the below site in the table as follows:

<b>Name</b>	<b>Location</b>	<b>Planning Sector</b>	<b>Parcel Number</b>	<b>Date</b>
Windover Heights*	224 Walnut Lane Vienna	V6	38-4 ((2)) 3	1869



**MODIFY  
 FIGURE:**

Fairfax County Comprehensive Plan, 2013 Edition, Area II, Vienna Planning District as amended through 10-20-2015; Overview, Heritage Resources, Figure 5, "Inventory of Historic Sites, Vienna Planning District, General Locator Map" page 12, to add an asterisk after Windover Heights to denote its demolition.



**MODIFY**

**FIGURE:** Fairfax County Comprehensive Plan, 2013 Edition, Area III, Bull Run Planning District as amended through 11-17-2015; Overview, Heritage Resources, Figure 4, “Inventory of Historic Sites, Bull Run Planning District,” pages 11-14, as follows:

**FIGURE 4**  
**INVENTORY OF HISTORIC SITES**  
**BULL RUN PLANNING DISTRICT**  
**(Inventory as of ~~2013~~ 2015)**

Modify the below site in the table as follows:

<b>Name</b>	<b>Location</b>	<b>Planning Sector</b>	<b>Parcel Number</b>	<b>Date</b>
Winfield Farm	<del>5300</del> <u>5290</u> Winfield Road Fairfax	BR7	55-4 ((1)) 24P	c. 1815

**MODIFY**

**FIGURE:** Fairfax County Comprehensive Plan, 2013 Edition, Area III, Dulles Suburban Center, as amended through 10-20-2015; Overview, Heritage Resources, Figure 7, “Inventory of Historic Sites, Dulles Suburban Center,” pages 39-40, as follows:

**FIGURE 7**  
**INVENTORY OF HISTORIC SITES**  
**DULLES SUBURBAN CENTER**  
**(Inventory as of ~~2013~~ 2015)**

REVISION OF HEADER ONLY – NO CHANGES WILL BE MADE TO THE ACTUAL TABLE.

**MODIFY**

**FIGURE:** Fairfax County Comprehensive Plan, 2013 Edition, Area III, Fairfax Center Area Planning District as amended through 10-20-2015; Area Wide Recommendations, Heritage Resources, Figure 11, “Inventory of Historic Sites, Fairfax Center Area” page 37, as follows:

**FIGURE 11**  
**INVENTORY OF HISTORIC SITES**  
**FAIRFAX CENTER AREA**  
**(Inventory as of ~~2013~~ 2015)**

REVISION OF HEADER ONLY – NO CHANGES WILL BE MADE TO THE ACTUAL TABLE.

**MODIFY**

**FIGURE:** Fairfax County Comprehensive Plan, 2013 Edition, Area III, Pohick Planning District as amended through 10-20-2015; Overview, Heritage Resources, Figure 4, “Inventory of Historic Sites, Pohick Planning District,” pages 11-13, as follows:

**FIGURE 4**  
**INVENTORY OF HISTORIC SITES**  
**POHICK PLANNING DISTRICT**  
**(Inventory as of ~~2013~~ 2015)**

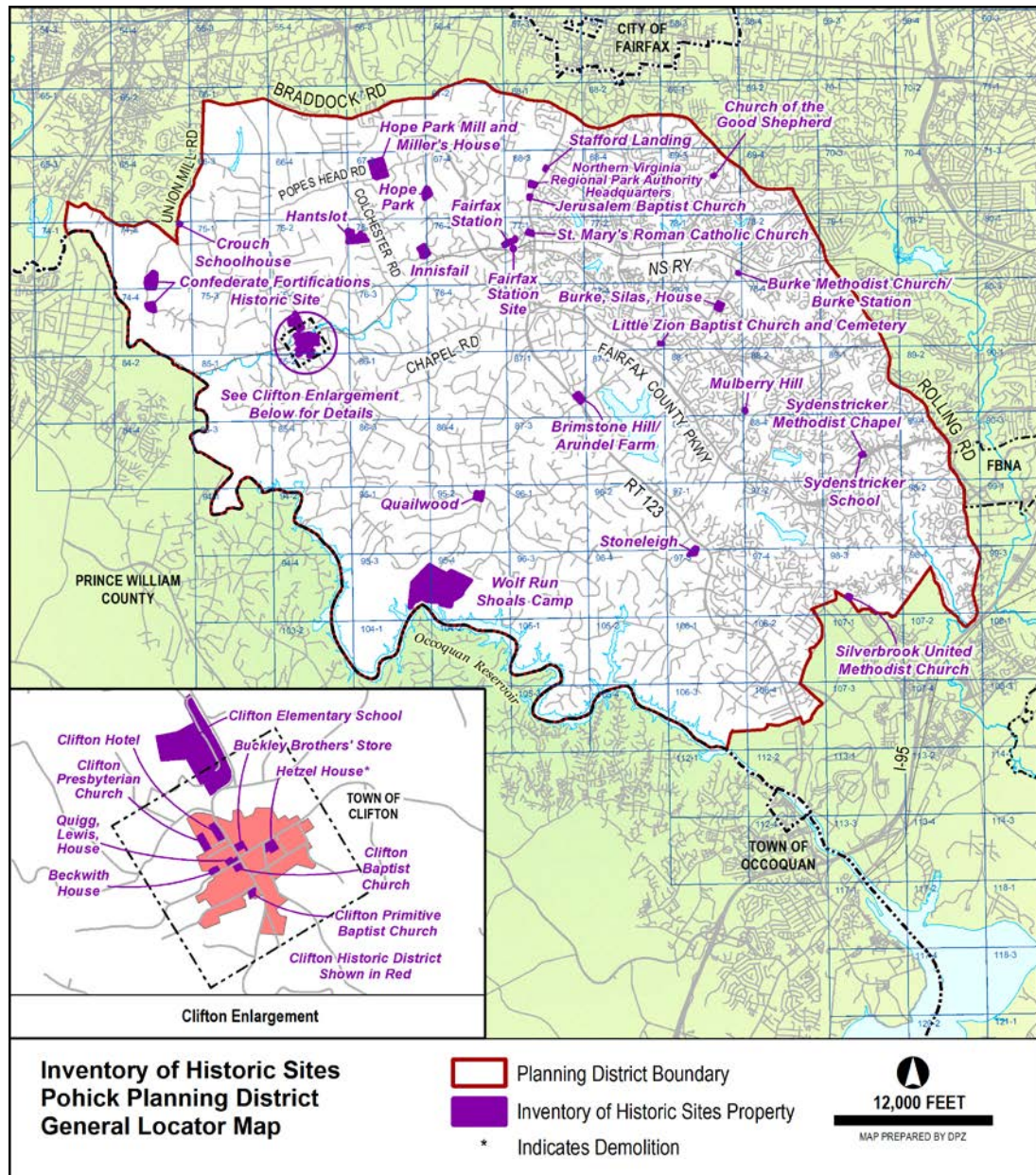
Add the below site to the table in alphabetical order:

<b>Name</b>	<b>Location</b>	<b>Planning Sector</b>	<b>Parcel Number</b>	<b>Date</b>
<u>Northern Virginia</u>	<u>5400 Ox Road</u>	<u>P1</u>	<u>68-3 ((1)) 55</u>	<u>1972-1973</u>
<u>Regional Park Authority</u>	<u>Fairfax Station</u>			
<u>Headquarters</u>				



**MODIFY  
FIGURE:**

Fairfax County Comprehensive Plan, 2013 Edition, Area III, Pohick Planning District as amended through 10-20-2015; Overview, Heritage Resources, Figure 5, "Inventory of Historic Sites, Pohick Planning District, General Locator Map" page 14, to depict the addition of the Northern Virginia Regional Park Authority Headquarters.



**MODIFY**

**FIGURE:** Fairfax County Comprehensive Plan, 2013 Edition, Area III, Upper Potomac Planning District as amended through 10-20-2015; Overview, Heritage Resources, Figure 4, “Inventory of Historic Sites, Upper Potomac Planning District,” pages 12-19, as follows:

**FIGURE 4  
INVENTORY OF HISTORIC SITES  
UPPER POTOMAC PLANNING DISTRICT  
(Inventory as of ~~2013~~ 2015)**

Modify the below site in the table as follows:

<b>Name</b>	<b>Location</b>	<b>Planning Sector</b>	<b>Parcel Number</b>	<b>Date</b>
Peck House *	<u>Formerly</u> 3106 Centreville Road, Herndon	UP6	<del>24-4 ((1)) 6C4</del> <u>24-4 ((7)) C</u>	c. 1853

**MODIFY**

**FIGURE:** Fairfax County Comprehensive Plan, 2013 Edition, Area IV, Lower Potomac Planning District as amended through 10-20-2015; Overview, Heritage Resources, Figure 4, “Inventory of Historic Sites, Lower Potomac Planning District,” pages 12-14, as follows:

**FIGURE 4  
INVENTORY OF HISTORIC SITES  
LOWER POTOMAC PLANNING DISTRICT  
(Inventory as of ~~2013~~ 2015)**

Modify the below sites in the table as follows:

<b>Name</b>	<b>Location</b>	<b>Planning Sector</b>	<b>Parcel Number</b>	<b>Date</b>
Camp Humphreys Pump Station and Filter Building V	9155 Richmond Highway Fort Belvoir	LP4	<del>109-3 ((1))</del> <u>115-2 ((1)) 1</u>	1918
Fairfax Chapel	21 <sup>st</sup> Street Fort Belvoir	LP4	115-2 ((1)) <u>1</u>	1941
Fort Belvoir Historic District V	Fort Belvoir	LP4	<del>Mostly 109-4;</del> <u>115-2 ((1)) 1</u>	From 1917
Metzger House *	<del>10720</del> <u>10718</u> Old Colchester Road, Lorton	LP3	113-3 ((1)) 27A	c. 1759

<b>Name</b>	<b>Location</b>	<b>Planning Sector</b>	<b>Parcel Number</b>	<b>Date</b>
Taft Archaeological Site N, V	7301 High Point Road Lorton	LP3	118-3	c. 500 BCE-1600 <u>ADCE</u>

**MODIFY**

**FIGURE:** Fairfax County Comprehensive Plan, 2013 Edition, Area IV, Mount Vernon Planning District as amended through 10-20-2015; Overview, Heritage Resources, Figure 4, “Inventory of Historic Sites, Mount Vernon Planning District,” pages 13-15, as follows:

**FIGURE 4  
INVENTORY OF HISTORIC SITES  
MOUNT VERNON PLANNING DISTRICT  
(Inventory as of ~~2013~~ 2015)**

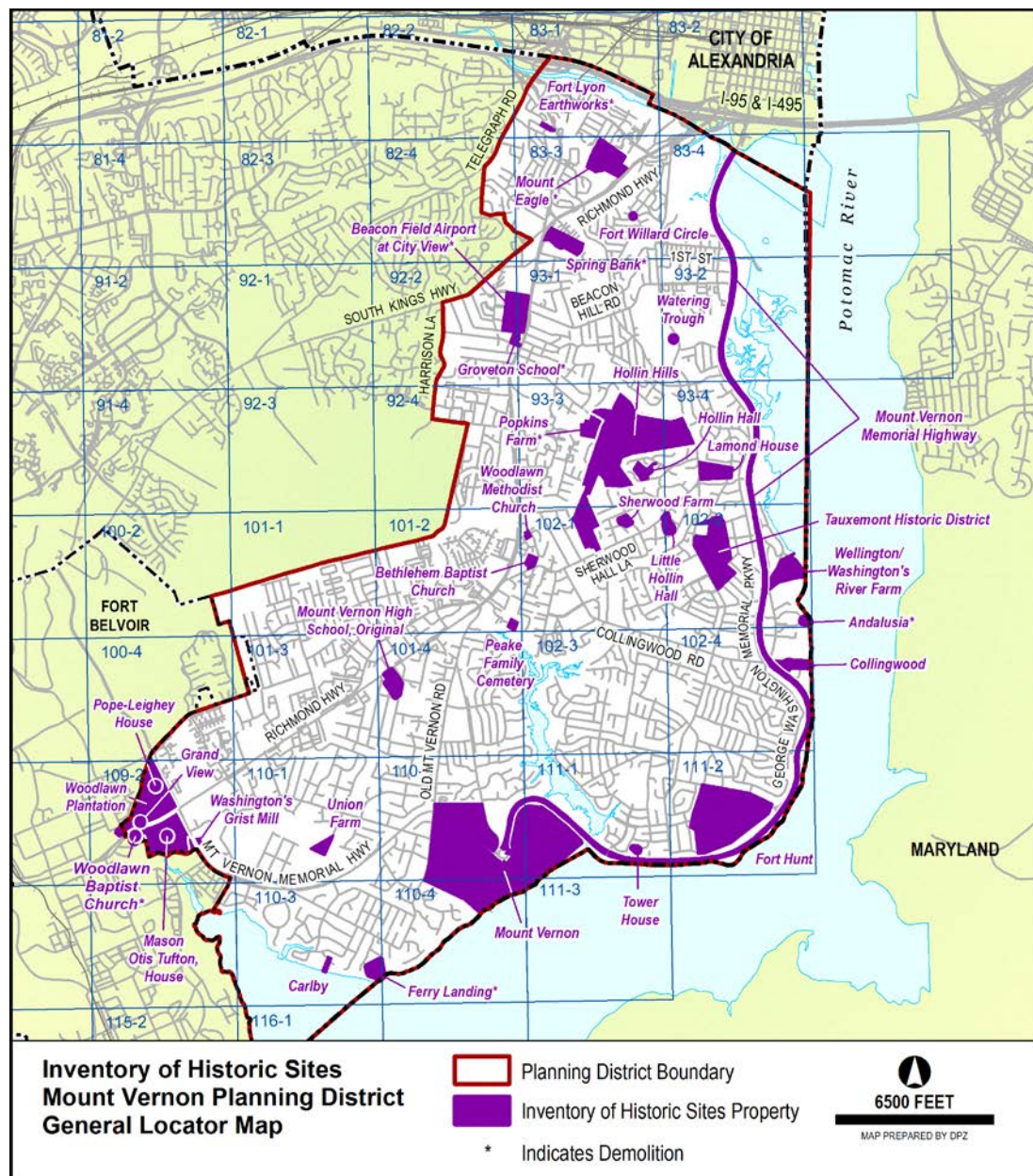
Modify the below site in the table as follows:

<b>Name</b>	<b>Location</b>	<b>Planning Sector</b>	<b>Parcel Number</b>	<b>Date</b>
Grand View H	9000 Richmond Highway Alexandria	MV8	109-2 ((1)) 3, 4	<del>1859/1860</del> <u>. 1869</u>
Mount Vernon High School, <del>Old</del> <u>Original</u>	8333 Richmond Highway Alexandria	MV7	101-4 ((1)) 5A	1939
Pope-Leighey House N, V, H	9000 Richmond Highway Alexandria	MV8	109-2 ((1)) 3, 4	<del>1941</del> <u>1940</u> <u>Moved here</u> <u>1965</u>



**MODIFY  
FIGURE:**

Fairfax County Comprehensive Plan, 2013 Edition, Area IV, Mount Vernon Planning District as amended through 10-20-2015; Overview, Heritage Resources, Figure 5, "Inventory of Historic Sites, Mount Vernon Planning District, General Locator Map" page 16, to depict the Mount Vernon High School, Original name.



**MODIFY**

**FIGURE:** Fairfax County Comprehensive Plan, 2013 Edition, Area IV, Rose Hill Planning District as amended through 10-20-2015; Overview, Heritage Resources, Figure 4, “Inventory of Historic Sites, Rose Hill Planning District,” page 9, as follows:

**FIGURE 4**  
**INVENTORY OF HISTORIC SITES**  
**ROSE HILL PLANNING DISTRICT**  
**(Inventory as of ~~2013~~ 2015)**

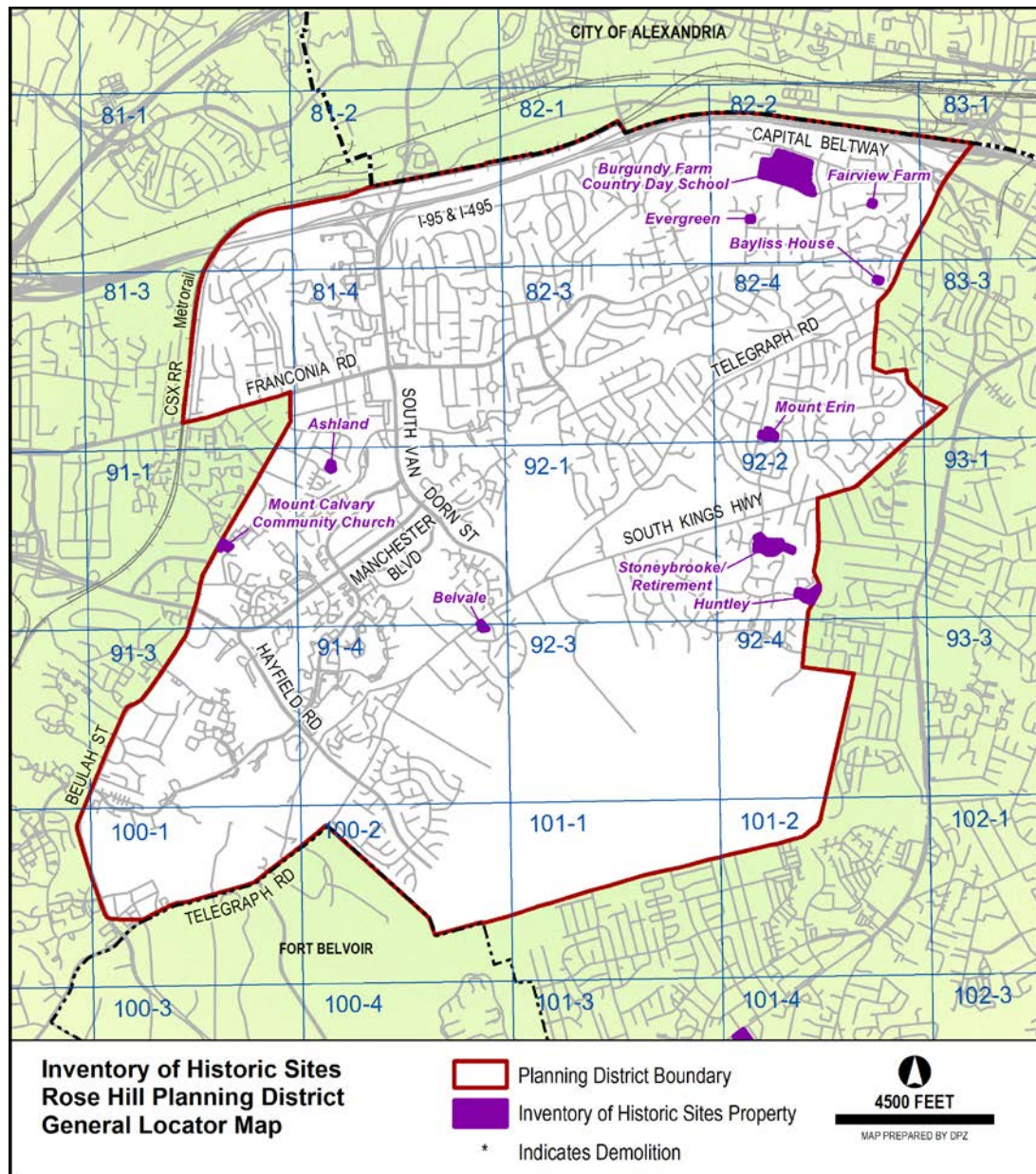
Add the below site to the table in alphabetical order:

<b>Name</b>	<b>Location</b>	<b>Planning Sector</b>	<b>Parcel Number</b>	<b>Date</b>
<u>Fairview Farm</u>	<u>3398 Tennessee Drive,</u> <u>Alexandria</u>	<u>RH3</u>	<u>82-2 ((26)) 7</u>	<u>c. 1865,</u> <u>renovations</u> <u>and</u> <u>additions</u> <u>1890-1910</u>



**MODIFY  
FIGURE:**

Fairfax County Comprehensive Plan, 2013 Edition, Area IV, Rose Hill Planning District as amended through 10-20-2015; Overview, Heritage Resources, Figure 5, "Inventory of Historic Sites, Rose Hill Planning District, General Locator Map" page 10, to depict the addition of Fairview Farm.



**MODIFY**

**FIGURE:** Fairfax County Comprehensive Plan, 2013 Edition, Area IV, Springfield Planning District as amended through 10-20-2015; Overview, Heritage Resources, Figure 4, “Inventory of Historic Sites, Springfield Planning District,” page 11, as follows:

**FIGURE 4**  
**INVENTORY OF HISTORIC SITES**  
**SPRINGFIELD PLANNING DISTRICT**  
**(Inventory as of ~~2013~~ 2015)**

REVISION OF HEADER ONLY – NO CHANGES WILL BE MADE TO THE ACTUAL TABLE.

**COMPREHENSIVE  
LAND USE**

**PLAN MAP:** The Comprehensive Plan Map will be amended with an “H” to designate additional historic sites as listed below.

- Fairview Farm, Tax Map Parcel 82-2 ((26)) 7;
- Northern Virginia Regional Park Authority Headquarters, Tax Map Parcel 68-3 ((1)) 55;
- Tinner Hill Historic District, Tax Map Parcels 50-2 ((7)) 1, 2, 3, 4, 4A, 4B, 6, 7, 8, 8A, 9;
- Mackall Hall House, Tax Map Parcels 22-3 ((1)) 50, 51.

**TRANSPORTATION**

**PLAN MAP:** The Countywide Transportation Plan Map will not change.