

Holmes Run Acres Potential HOD Workgroup Meeting #14

April 20, 2022 @ 6:30

Teams Virtual meeting



PLANNING & DEVELOPMENT





County-Facilitated Poll on Behalf of the HRA Civic Association

Continued

Poll Questions

How informed do you feel about the potential Historic Overlay District for Holmes Run Acres?



Not at all informed

Very informed

Poll Questions

Do you support the establishment of a Historic Overlay District for the Holmes Run Acres neighborhood?

☐ Yes

☐ No

☐ No opinion

Poll Comment Box

If you'd like, please share why you are or are not in support of the Historic Overlay District for Holmes Run Acres.

500 characters remaining

Logged in as **Sarah Camille Godfrey**

Comment

Submit Survey



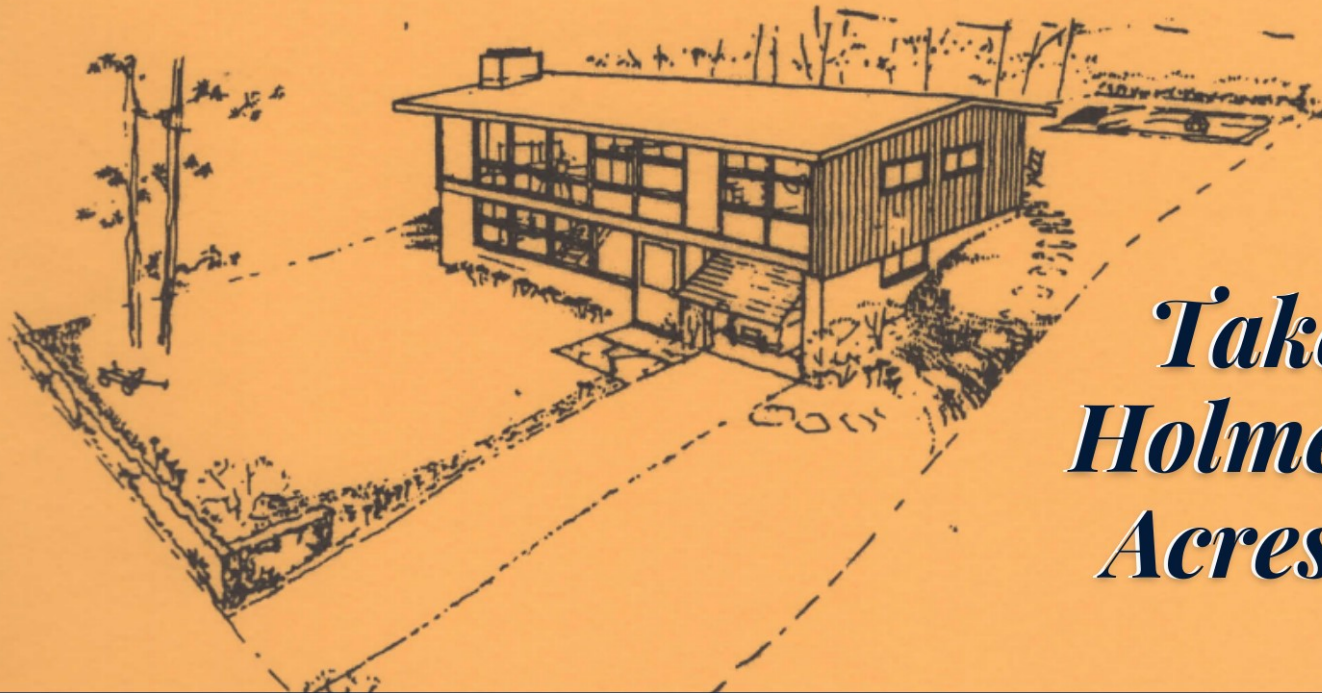
Postcard Mailing for Poll

Holmes Run Acers Potential HOD Study

Post Card Front



LET YOUR VOICE BE HEARD!



*Take the
Holmes Run
Acres Poll!*

RESPOND BY AUGUST XX ON FAIRFAX
COUNTY'S CONSIDERATION OF A HISTORIC
OVERLAY DISTRICT FOR HOLMES RUN ACRES

Post Card Back



Fairfax County
Department of Planning & Development
12055 Government Center Pkwy, Suite 730
Fairfax, VA 22035

Take the Neighborhood Poll by August XX to weigh in on Fairfax County's consideration of a Historic Overlay District (HOD) for Holmes Run Acres.

Your property is located within the boundary of the potential HOD. Scan the QR code below or access the website below to learn more and complete the poll. **One poll response is permitted per property.**



Scan Me
Use Phone
Camera



Take the poll online: <https://publicinput.com/H6114>.

For questions or to request a paper poll email Denice.Dressel@fairfaxcounty.gov or call 703-324-1380.

Your input is important – Thank you for taking a few minutes to share your thoughts with us!

Ms. Jane Doe
1100 Holmes Run Drive
Annandale, VA 22042



Translation services will be provided upon request. Call 703-324-1380 TTY 711 or email Sarah.Godfrey@fairfaxcounty.gov.

Postcard mailing for poll

- Postcards with QR codes directing people to the poll
- Using **IP addresses** as unique identifier - 1 vote per IP address, cross checked against property address. Duplicate entries will be analyzed manually.
- Paper ballots available on request. Paper ballots should be mailed in
- Paper ballots in other languages - 3-day turnaround
- All results will be reported

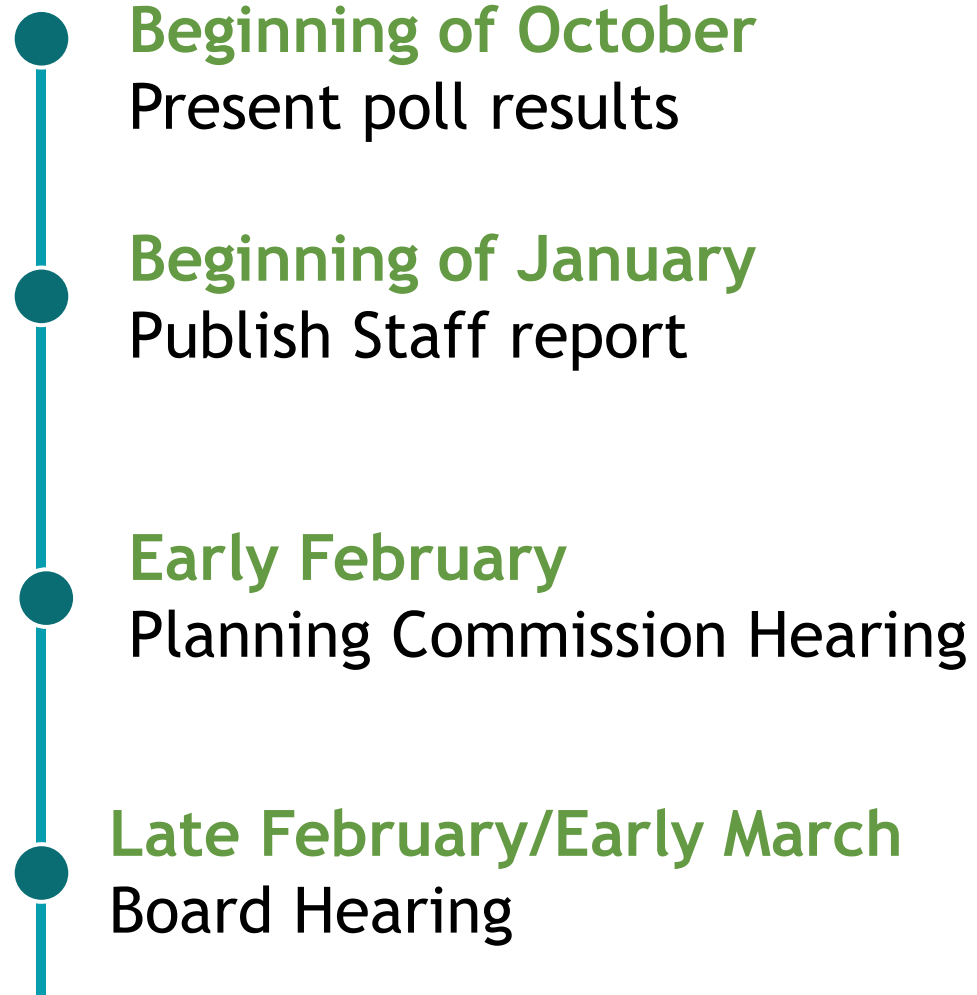
Timeline for Post Card Mailing

- | | | |
|---|------------------------------|------------|
| 1 | Print Shop | 2-3 days |
| 2 | Mail Room | ~1 day |
| 3 | Mail Delivery | 7-10 days |
| 4 | Poll open | 4 weeks |
| 5 | Poll tabulation and analysis | 3-4 weeks |
| 6 | Announce Results | 8-10 weeks |

Poll timeline

- **June 15?**
Last workgroup meeting - Review PublicInput website
- **End of July/beginning of August**
Community Meeting
- **End of July/beginning of August**
Poll opens and postcards are mailed, directing property owners to the poll
- **Beginning of September**
Poll closes

Study timeline





Holmes Run Acres Potential HOD Community Meeting

Anticipated: **July/August** 2022

Holmes Run Acres Potential Historic Overlay District Community Meeting

- Work with Supervisor's office and the Civic Association
- Mailer going out to everyone in the community
- Go over the history of the study
- Timeline with milestones

Holmes Run Acres Potential Historic Overlay District Community Meeting

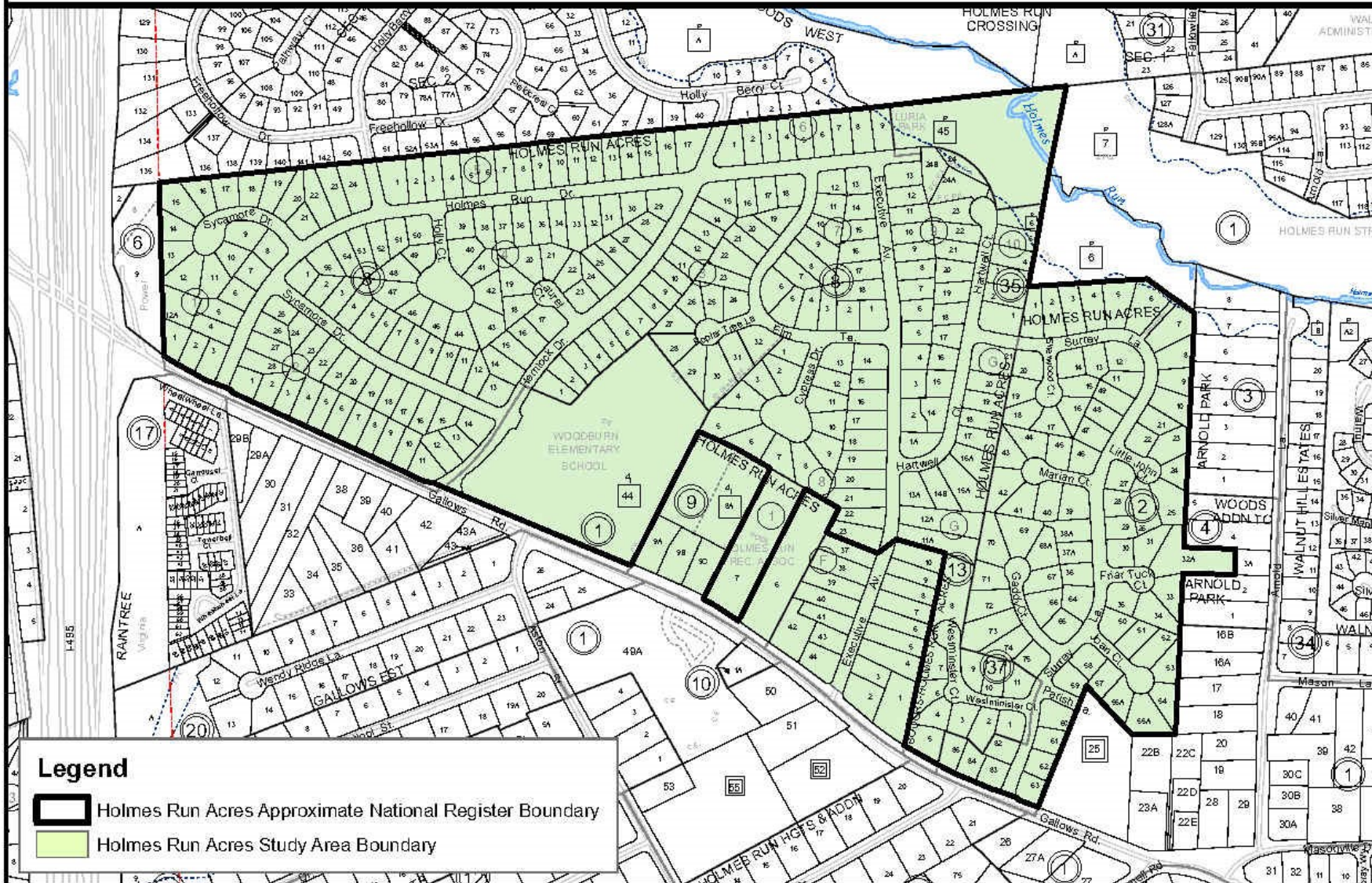
Staff will present findings from study required in the Zoning Ordinance, including:

- Uses that are likely to have an adverse effect
- Boundaries
- Character-defining features
- Contributing and non-contributing properties
- Design Guidelines
- Draft Zoning Ordinance amendment



Holmes Run Acres Potential HOD Boundaries

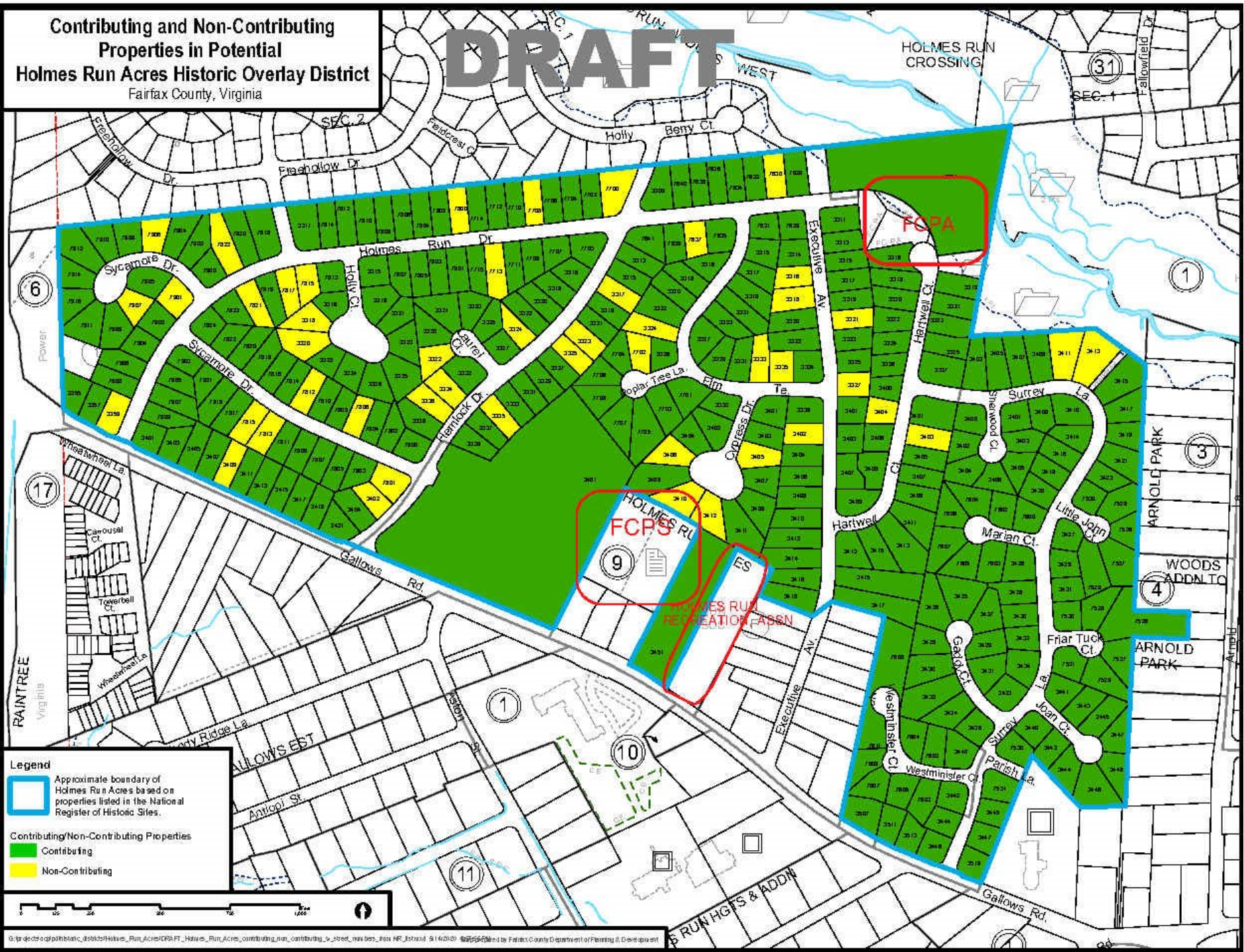
Holmes Run Acres Historic Overlay District Study Area Boundary



Holmes Run
Acres HOD
Study Area
Boundary

Contributing and Non-Contributing
Properties in Potential
Holmes Run Acres Historic Overlay District
Fairfax County, Virginia

DRAFT



Holmes Run
Acres
Approximate
National
Register
Boundaries

Legend

Approximate boundary of
Holmes Run Acres based on
properties listed in the National
Register of Historic Sites.

Contributing/Non-Contributing Properties

Contributing

Non-Contributing





Woodburn Elementary
School



Holmes Run Acres Recreation Association and Community Path



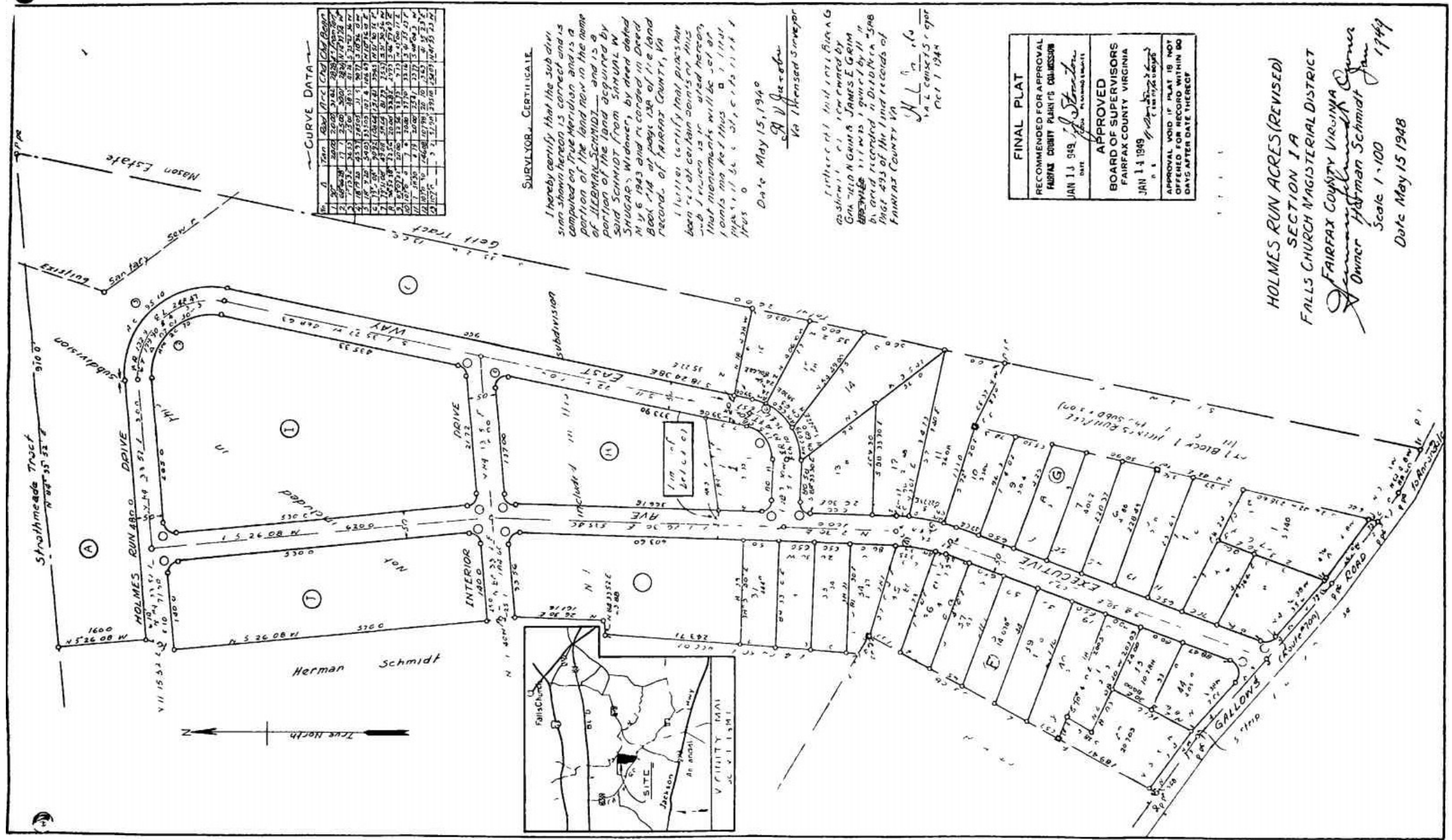
Luria Park

DRAFT



G:\projects\publications\disbids\Hawes_Run_Acres\DRAFT_Hawes_Run_Acres_contributing_run_contributing_to_street_numbers_from_HR_Istmad_9142020_07-05-2020.dwg

Holmes Run Acres Subdivision Plat 1A, 1948 - Executive Ave.





3419 Executive Ave.



3420 Executive Ave.



3421 Executive Ave.



3422 Executive Ave.



3423 Executive Ave.



3424 Executive Ave.



3425 Executive Ave.



3426 Executive Ave.



3427 Executive Ave.



3428 Executive Ave.



3429 Executive Ave.



3430 Executive Ave.



3431 Executive Ave.



3433 Executive Ave.



3435 Executive Ave.



3465 Gallows Rd.



3467 Gallows Rd.



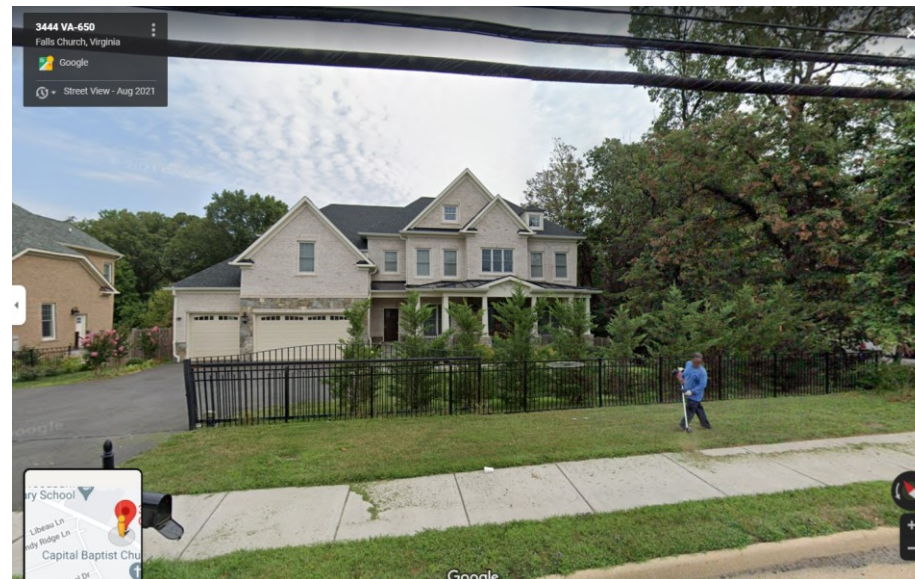
3405 Gallows Rd.



3441 Gallows Rd.



3443 Gallows Rd.



3445 Gallows Rd.



PLANNING & DEVELOPMENT



Thank you!
Next meeting:
June 15, 2022 @ 6:30

<https://www.fairfaxcounty.gov/planning-development/plan-amendments/holmes-acres-run-hod>