

# AN AMENDMENT TO THE COMPREHENSIVE PLAN FOR FAIRFAX COUNTY, VIRGINIA 2013 EDITION

**GENERAL LOCATION:** 9617 Burke Lake Road

**PLANNING AREA AND DISTRICT:** Area III,  
Pohick Planning District

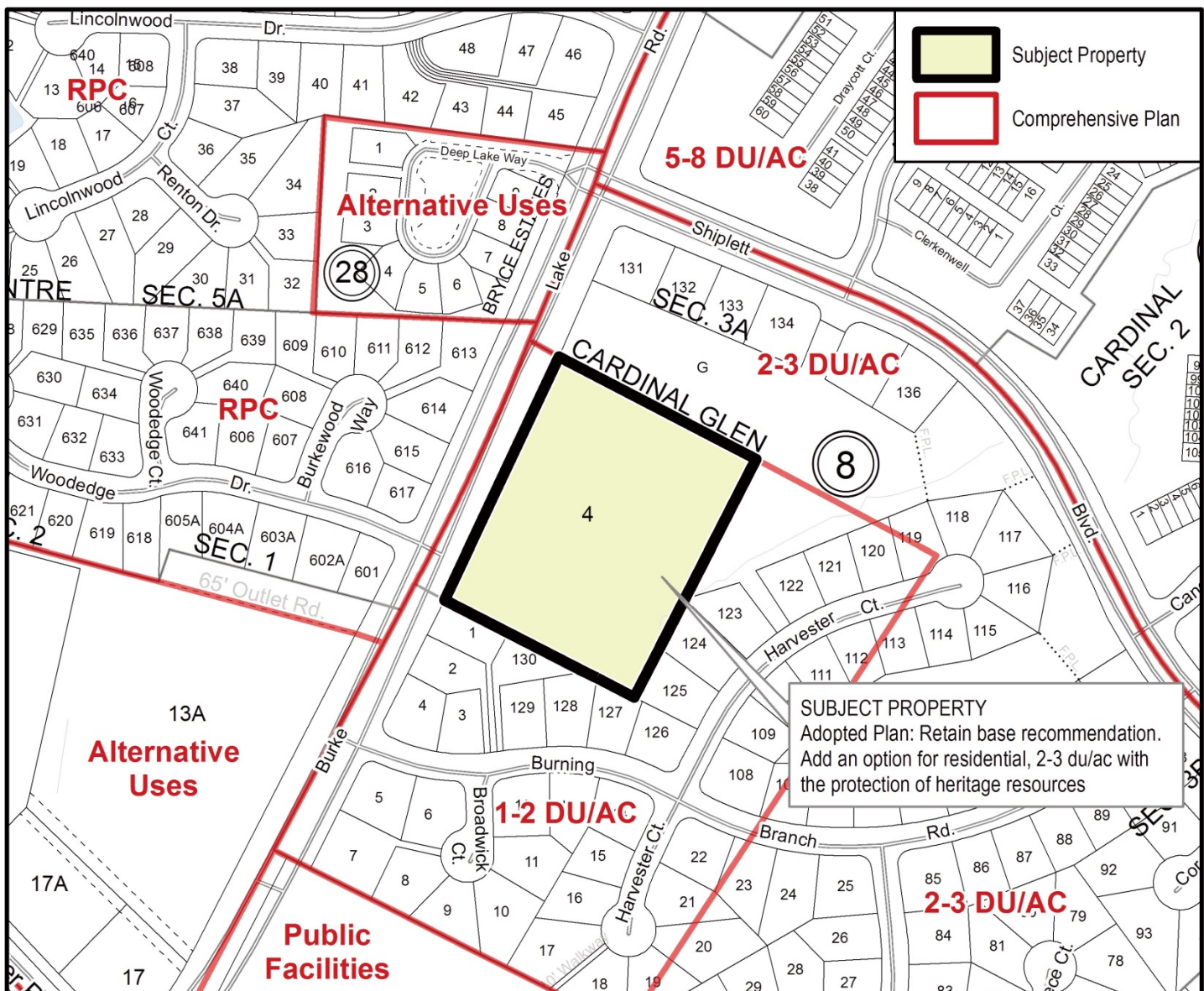
**SUB-DISTRICT DESIGNATION:**  
P2-Main Branch Community Planning Sector

**PARCEL LOCATION:** 78-3 ((1)) 4

**SUPERVISOR DISTRICT:** Springfield

**ADOPTED:** March 24, 2015 **ITEM NO.** 2014-III-P1

FOR ADDITIONAL INFORMATION CALL (703) 324-1380



300 FEET

PREPARED BY THE DEPARTMENT OF PLANNING AND ZONING USING FAIRFAX COUNTY GIS  
PARCEL INFORMATION CURRENT TO MARCH 2015  
G:\projects\locp\pd\OTPA\_GRAPHICS - Silas Burke Property



**AMENDMENT TO THE COMPREHENSIVE PLAN (2013 EDITION)**

The following changes to the Comprehensive Plan have been adopted by the Board of Supervisors. To identify changes from the previously adopted Plan, new text is shown as underlined and deleted text is shown with a ~~striketrough~~.

**ADD:** Fairfax County Comprehensive Plan, 2013 Edition Area III, Pohick Planning District, Amended through 10-28-2014, P2-Main Branch Community Planning Sector, Land Use Recommendations, a new recommendation (#19), page 34:

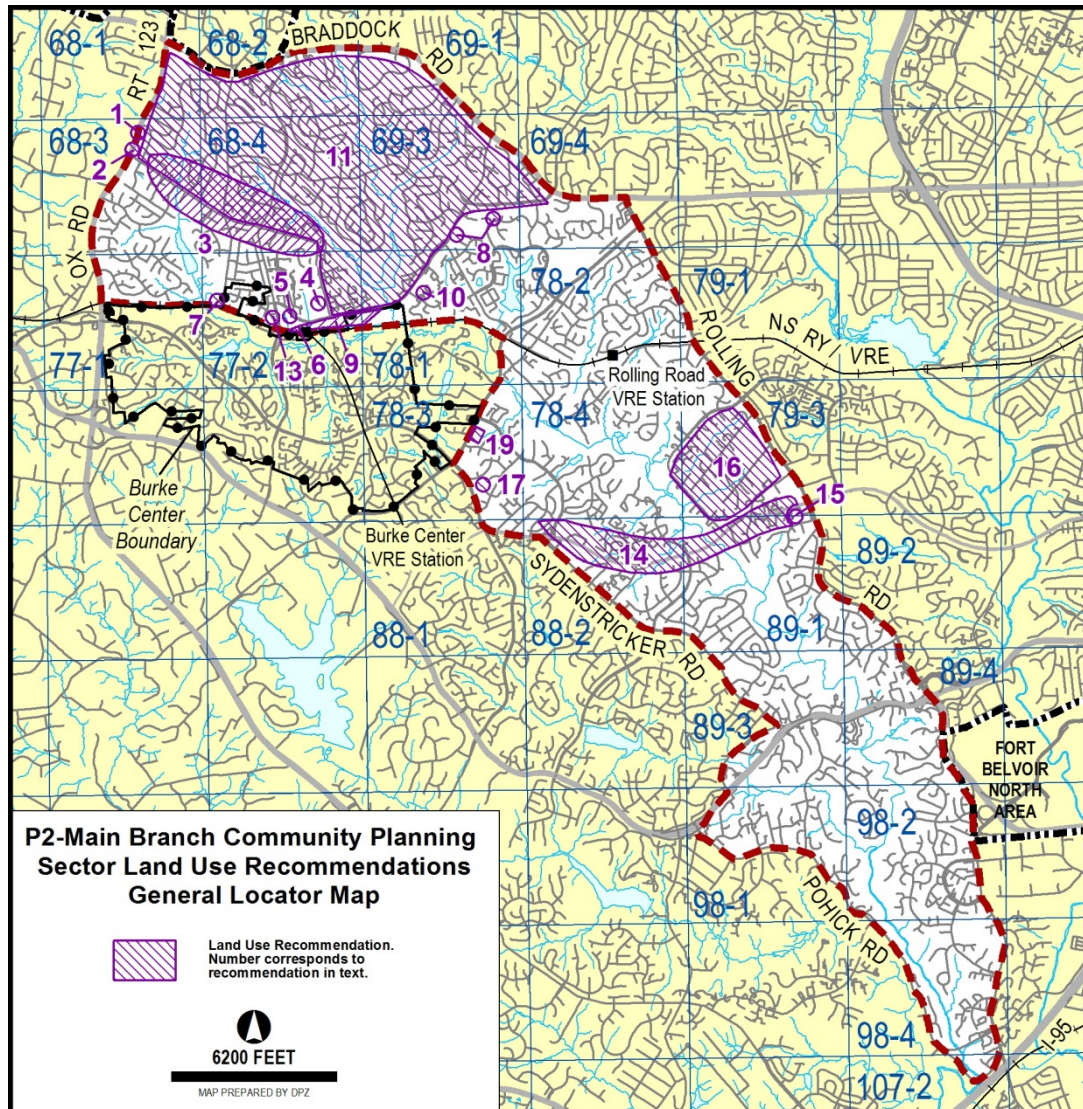
“19. Parcel 78-3 ((1)) 4 is planned for residential use at 1-2 dwelling units per acre. As an option, residential use at 2-3 dwelling units per acre or a medical care facility (assisted living facility) may be appropriate, subject to the following conditions:

- The Silas Burke House should be retained and preserved in accordance with The Secretary of the Interior’s Standards for the Treatment of Historic Properties with commitment to an active use for the house.
- Façade, historic, and open space conservation easements should be placed on the property to protect the house, accessory structures, and character of the immediate setting surrounding the house in perpetuity.
- The design, scale, mass, orientation, and architecture of additional development should be compatible with the Silas Burke House and its surrounding area.”



**MODIFY  
FIGURE:**

Fairfax County Comprehensive Plan, 2013 Edition Area III, Pohick Planning District, Amended through 10-28-2014, P2-Main Branch Community Planning Sector, Figure 13, "P2 - Main Branch Community Planning Sector, Land Use Recommendations, General Locator Map," page 31, to add the new recommendation #19 to the figure.



**LAND USE**

**PLAN MAP:** The Comprehensive Plan map will not change.

**TRANSPORTATION**

**PLAN MAP:** The Countywide Transportation Plan map will not change.