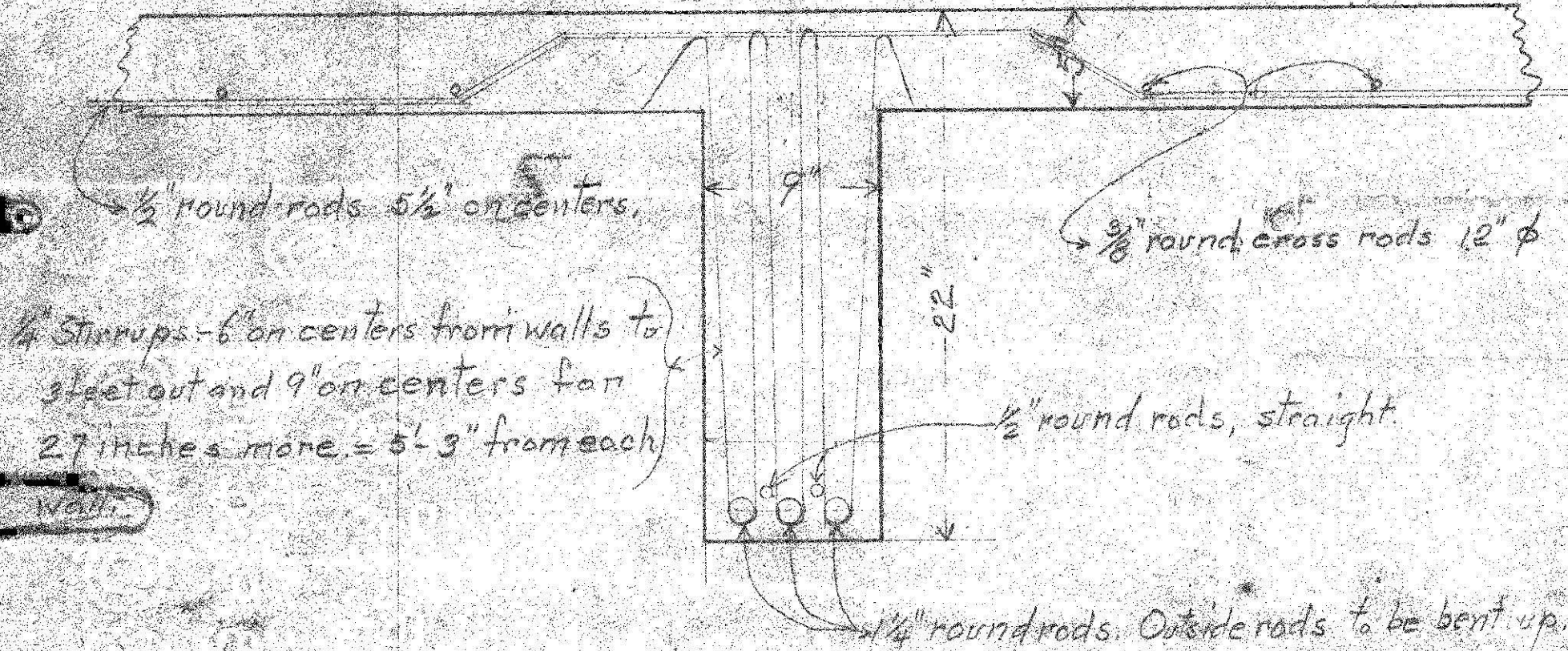


Live Load = 100 lbs. per sq. ft. Weight of slab = 60# per sq. ft.



1/2" round rods 5 1/2" on centers.  
 1/4" Stirrups - 6" on centers from walls to  
 sheet out and 9" on centers for  
 27 inches more = 5'-3" from each

3/8" round cross rods 12"  $\phi$

1/2" round rods, straight.

1/4" round rods. Outside rods to be bent up.

Concrete beam and floor slab for dairy at D. C. Workhouse. March 26 '19  
 Clear span of beam = 20'-0" Clear span of floor slab = 10'-2"

APPROVED

APPROVED

J. M. Backus

C. B. Backus

APR 5 1919  
 J. M. Backus  
 MUNICIPAL ARCHITECT

APR 3 - 1919  
 Cary M. ...  
 COLONEL ENGINEER, U. S. A.  
 ASST. ENGR. COMMISSIONER, D. C.