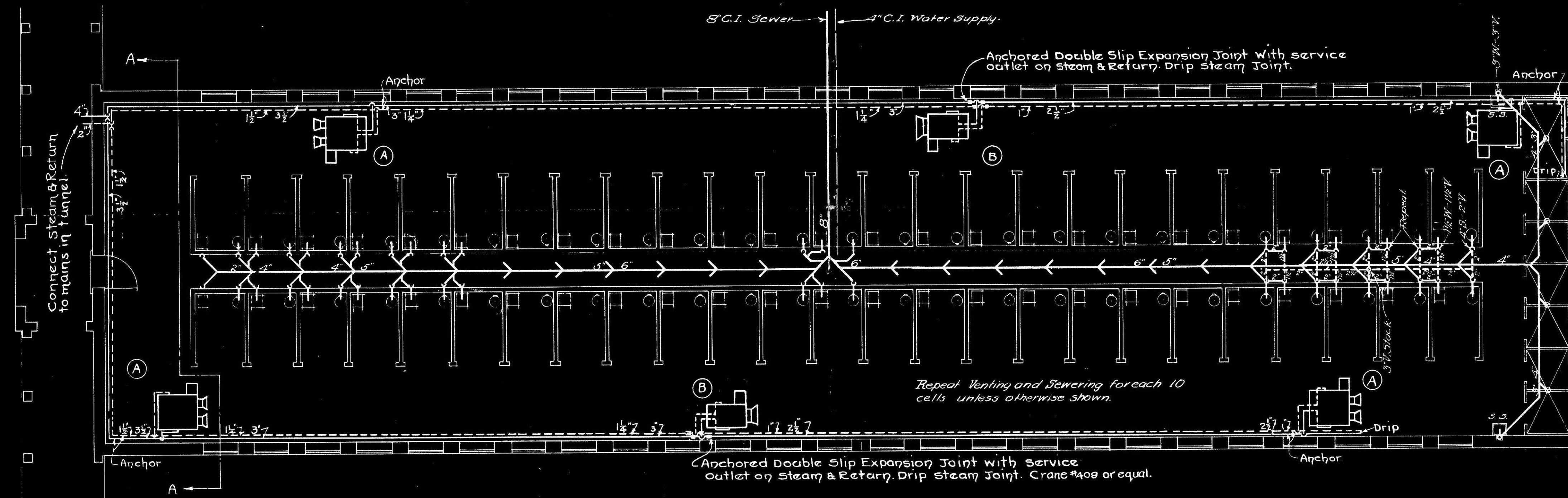
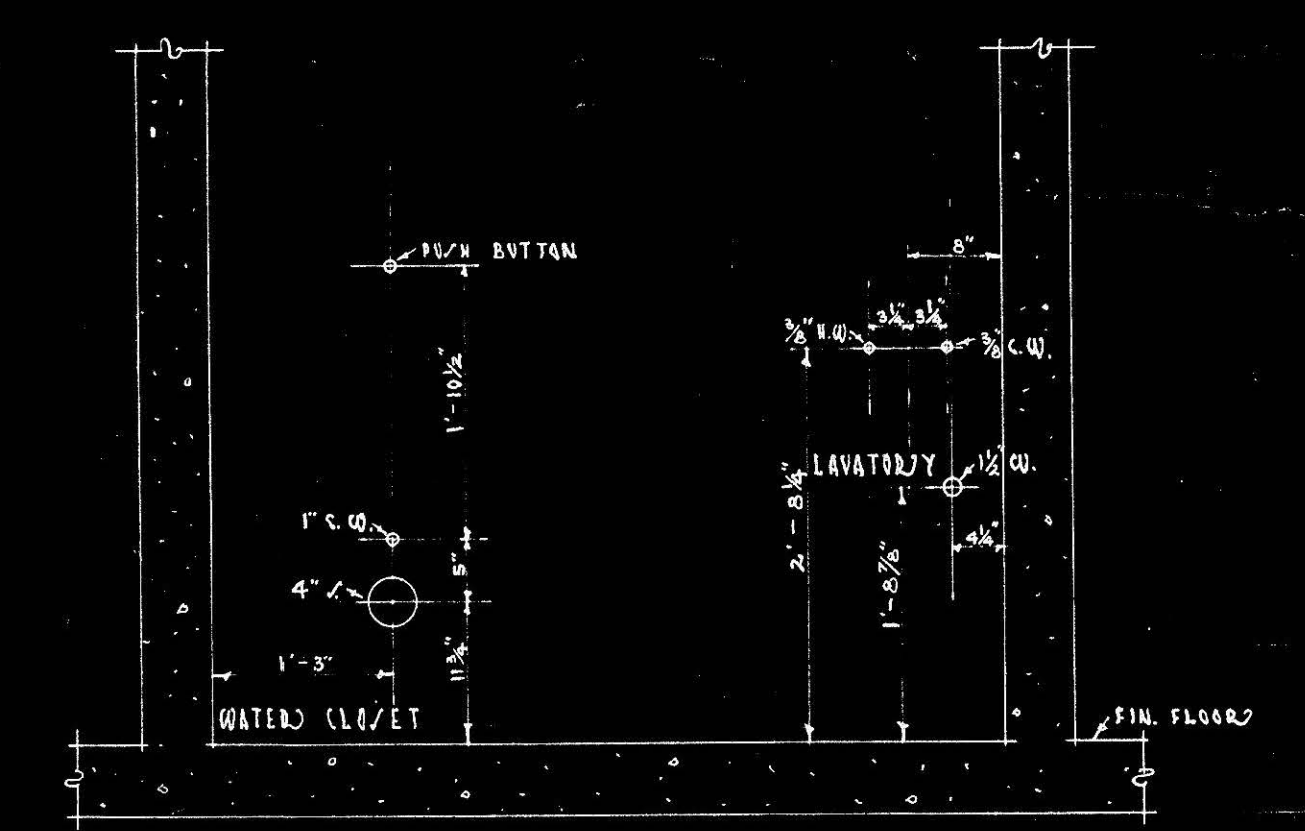


SECTION A-A



FLOOR PLAN  
Scale - 1/8" = 1-FT.



PART ELEVATION OF CELL / SHOWING TYPICAL LAYOUT OF FIXTURE OUTLET /  
SCALE 3/8" = 1'-0"

UNIT HEATER SCHEDULE

- A. 4-UNIT HEATERS-252,000 BTU. EACH AT FULL LOAD SPEED OF 1160 RPM. WITH AIR ENTERING TEMP. 60°F - 1-H.P. MOTOR-SINGLE PHASE, 60 CYCLE, 110 VOLT SERVICE.
  - B. 2-UNIT HEATERS-126,000 BTU. EACH AT FULL LOAD SPEED OF 1160 RPM. WITH AIR ENTERING TEMP. 60°F - 1/2 H.P. MOTOR-SINGLE PHASE, 60 CYCLE, 110 VOLT SERVICE.
- ABOVE HEATERS TO OPERATE ON 5" STEAM PRESS, WITH FINAL TEMP. OF 123.0°F. APPROX.
- NOTE:- SHOULD THE FUTURE CELLS EVER BE ADDED ON TOP OF PRESENT ONES, PROVISIONS SHOULD BE MADE FOR EXTENDING AN AIR CIRCULATING DUCT FROM HEATERS TO FLOOR TO MAKE AIR AND HEAT CIRCULATION POSITIVE TO BOTTOM OF CELLS

REVISIONS	WORK RECORD	CELL HOUSE		FILE NO.
	DRAWN BY SA	BUILDING FOR NEW ENCLOSED GROUP.		
	TRACED BY SA	LOCATION D.C. REFORMATORY LORTON VIRGINIA.		
	CHECKED BY C.A.B.	OFFICE OF MUNICIPAL ARCHITECT-WASHINGTON, D. C.		DRWG. NO.
	DATE 11/13/31	CHIEF OF ARCHITECTURAL DIVISION	M.A. Doe	DATE 11-14-31
	SHEET	CHIEF OF STRUCTURAL DIVISION	H. J. Evans	DATE 11-15-31
		CHIEF OF MECHANICAL DIVISION	C. J. Smith	DATE 11-16-31
		MUNICIPAL ARCHITECT	Wm. A. Harrison	DATE 11-18-31