



PLANNING & DEVELOPMENT



# AF 2021-SP-001

## Crump Local Agricultural and Forestal District

# Location

- 12000 Henderson Road
- Springfield District
- 22.01 acres
- Zoned R-C





# Details

- Equestrian/  
agriculture: 9.01 acres
- Undeveloped: 11.00 acres
- Residential: 2.00 acres











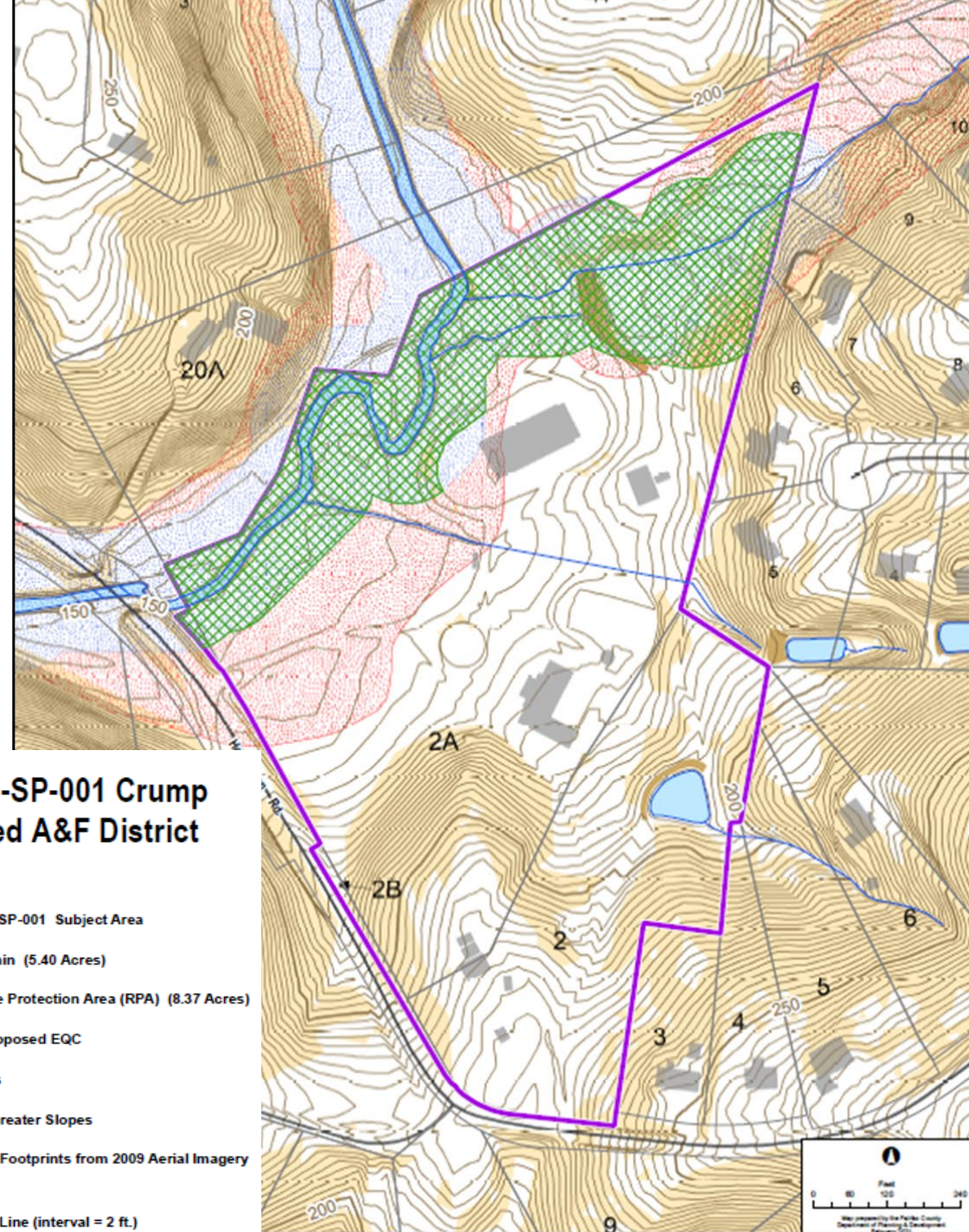


- RPA 8.37 acres
- Floodplain 5.40 acres
- EQC 5.84 acres

### AF 2021-SP-001 Crump Proposed A&F District

#### Legend

-  AF 2021-SP-001 Subject Area
-  Flood Plain (5.40 Acres)
-  Resource Protection Area (RPA) (8.37 Acres)
-  Initial Proposed EQC
-  Wetlands
-  15% or Greater Slopes
-  Building Footprints from 2009 Aerial Imagery
-  Streams
-  Contour Line (interval = 2 ft.)



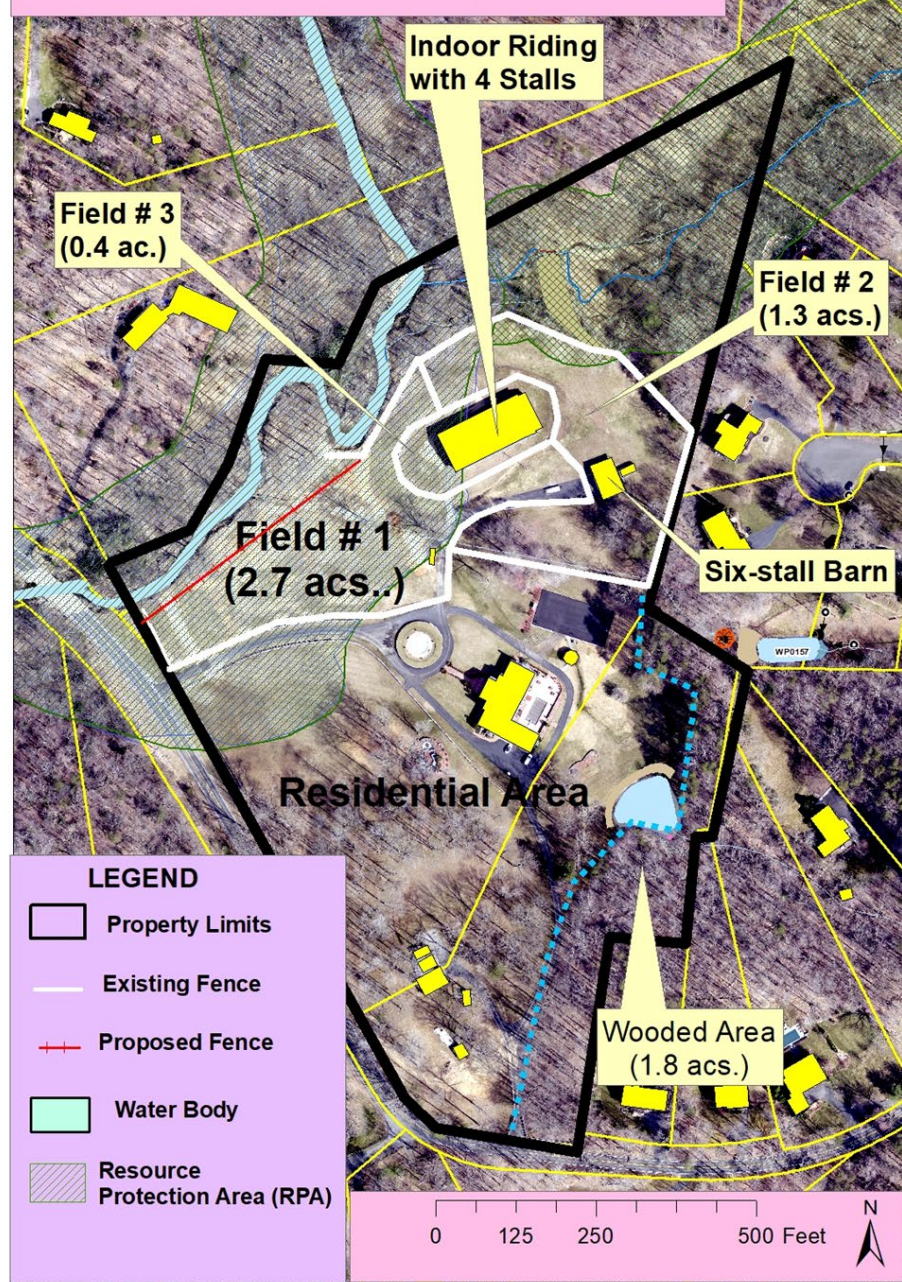






# Soil and Water Conservation Plan

Crump, Bennett A&F District  
12000 Henderson Road, CLifton VA



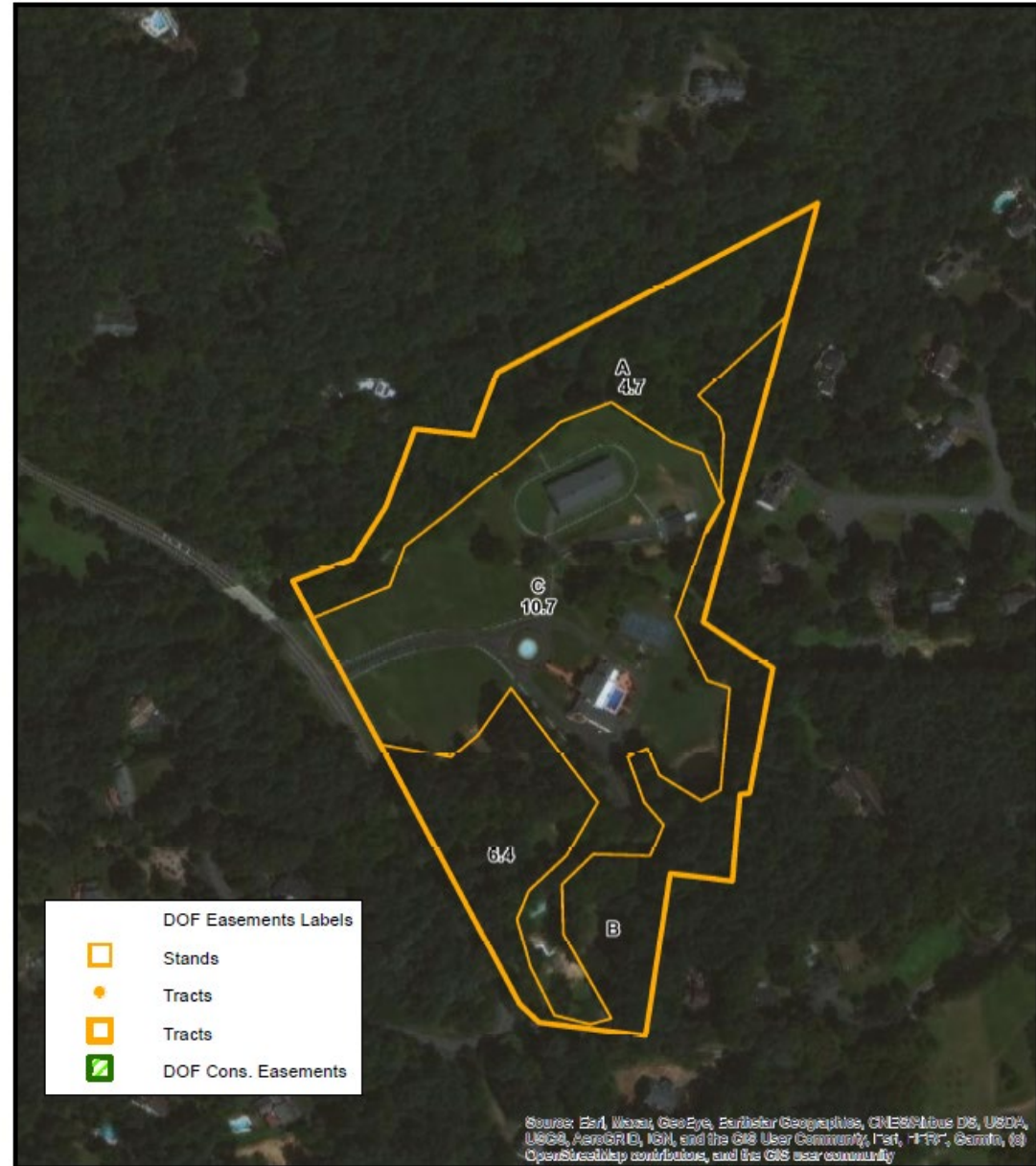


# Virginia Dept. Of Forestry Guidance (11 acres of Forest)



## Crump A&F District Stand Map

James McGlone  
(703)324-1489  
jim.mcglone@dof.virginia.gov  
12/2/2020



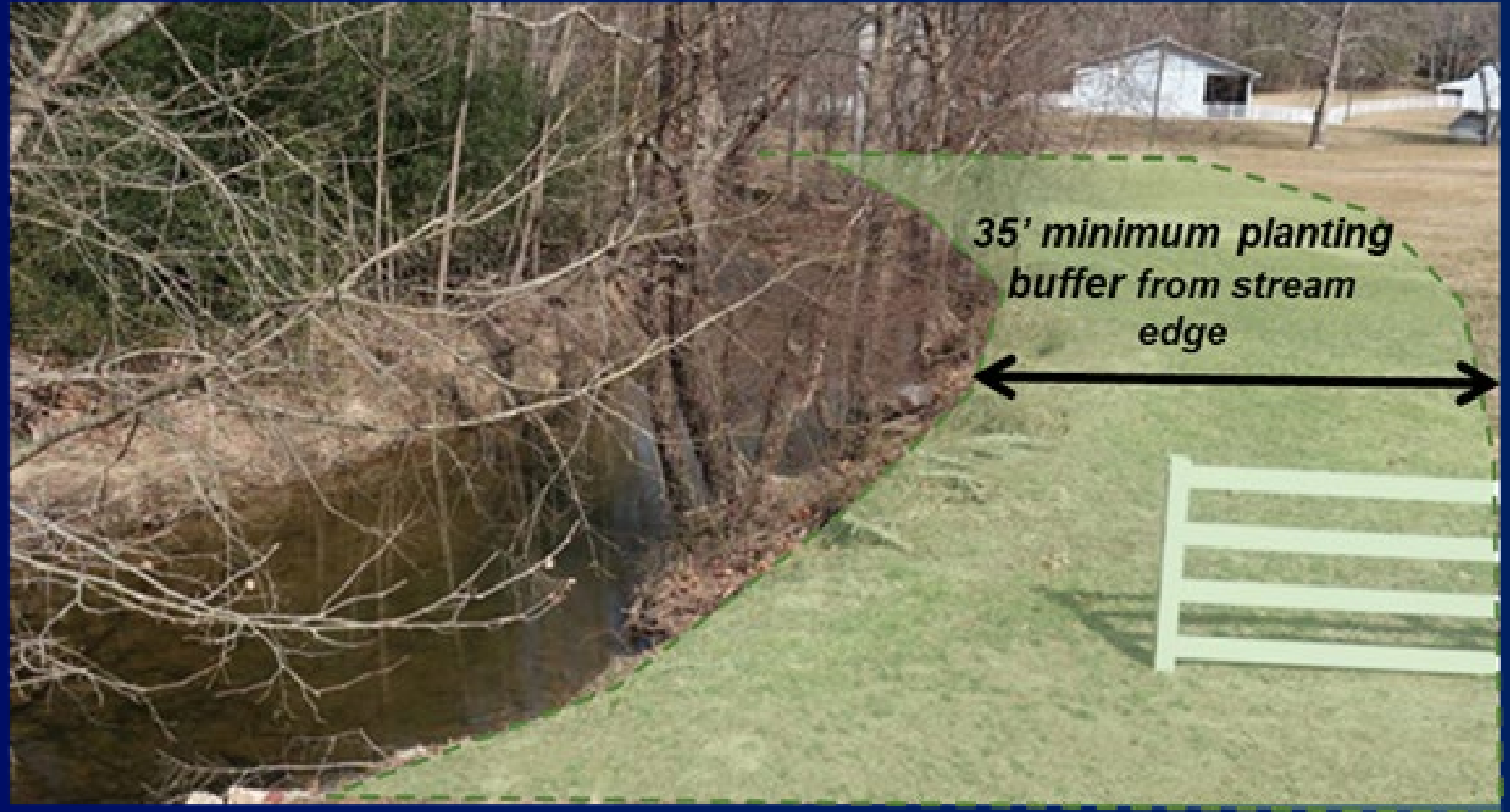
While VDOF has attempted to ensure that the features shown on this map are accurate, VDOF did not perform survey work or otherwise verify information provided to it in preparing this map and all features and acreages shown are approximate. VDOF expressly disclaims all warranties of any type concerning this map, and any use of the map assumes you understand and agree with this disclaimer.

Feet  
0 120 240 480



## Restoration/Preservation of RPA/EQC

- 35' minimum planted buffer around pond









# Staff Analysis

## Resource Management Plans:

- Soil & Water:
  - A Soil and Water Quality Conservation Plan was prepared.
- Forestry:
  - Forest Management Plan was prepared.

## Evaluation Criteria:

- Group A (all are recommended):
  - Satisfies all applicable recommendations.
- Group B (at least 2 recommended):
  - Satisfies 4 criteria:
    - Provides scenic vistas and contributes to rural character of area.
    - Has high potential for historic/and or archeological sites.
    - Will practice effective water pollution controls with implementation of 35-foot planting buffer along Wolf Run
    - Located in R-C Zoning District



# Staff Recommendations

- Staff recommends approval, subject to the proposed Ordinance Provisions dated June 13, 2021.





PLANNING & DEVELOPMENT



# AF 2021-SP-001

## Crump Local Agricultural and Forestal District