

Reston Environmental Policies: An Overview

March 22, 2021

Joe Gorney, AICP, Senior Environmental Planner
DPD, Planning Division,
Environment & Development Review Branch



Vision & Policy Guidance

A place to live, work, and play

- ▶ Encourage a strong sense of community, through design & provision of community amenities.
- ▶ Preserve natural areas & integrate open space (park land, natural areas, clean lakes, walking trails).
- ▶ TSAs - integrate into larger community; connectivity to amenities (incl. lakes & trails)

(Pages 6-8)



Design Considerations

- ▶ Blend w/ existing development
- ▶ Improve environment for pedestrians and cyclists
- ▶ Centrally-located public spaces
- ▶ Integration of the built environment with the natural landscape
- ▶ Conservation of land and natural resources

(Page 20)



Principles for Environmental Planning

Complement the Existing Reston Character

- ▶ Integration of nature into development

Conserve Land

- ▶ Shared public spaces
- ▶ Natural environment as an organizing feature

Enhance Local & Regional Identity

- ▶ Community gathering spaces
- ▶ Integration of nature & public art into built environment
- ▶ Connections between homes & community

Design Sustainable Buildings & Environments

- ▶ Buildings and infrastructure
- ▶ Environmentally sensitive stormwater design
- ▶ Restoration and stabilization of existing streams

(Pages 21-22)



Tree Canopy

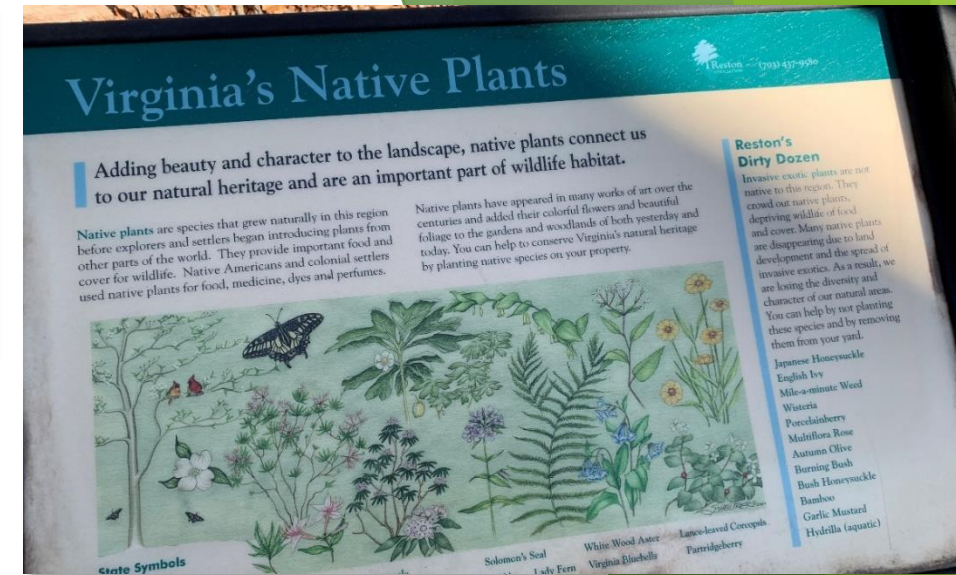
Benefits:

- ▶ Stormwater management
- ▶ Energy conservation
- ▶ Mitigation of ozone and carbon in the air
- ▶ Habitat for wildlife
- ▶ Aesthetics
- ▶ Shade
- ▶ Sense of safety and protection from street traffic.

Strategies/Methods:

- ▶ Use native plantings
- ▶ Avoid overuse of one tree species
- ▶ Replace existing trees, when necessary
- ▶ Eradicate invasive species
- ▶ Planting program for trees, seedlings, shrubs, and wildflowers for regeneration & resilience

(Pages 46-47)



Natural Resources Management

Protection, enhancement, and management:

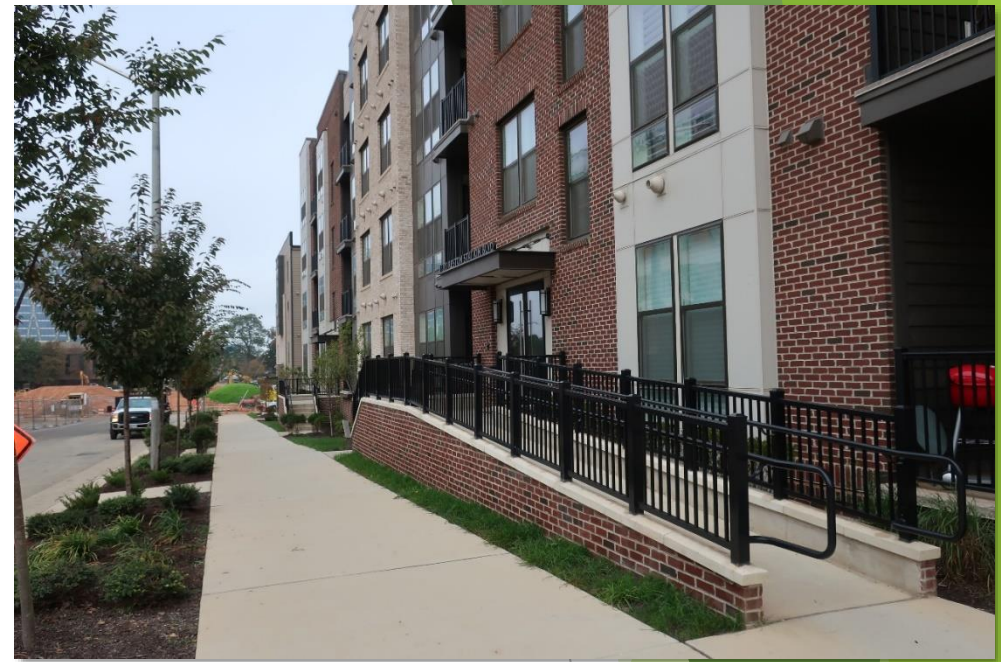
- ▶ Wetlands
- ▶ Streams & Buffers
- ▶ Lakes and ponds

(Pages 46-47)



Green Building Practices

- ▶ Non-residential development in the TSAs - LEED Silver certification or the equivalent, at a minimum.
 - ▶ Policy Plan guidance.
- (Page 48)



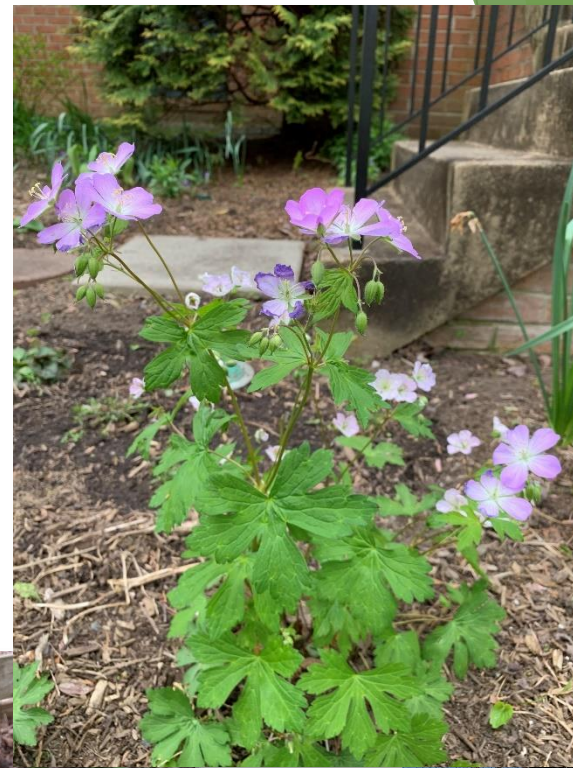
Noise Impacts

- ▶ Reston TSAs - sites near major highways and Metrorail may be appropriate for residential development and/or other noise sensitive uses, even when projected noise impacts may exceed DNL 75 dBA.
(Pages 48-49)



Reston Neighborhoods

- ▶ Maintain existing amount of natural areas.
 - ▶ Maintain existing mature tree canopy.
- (Pages 54-58).



Natural Landscaping

- ▶ Aesthetic & ecological functions of landscapes in built environment are restored
 - ▶ Preserve & recreate land and water features and native plant communities
 - ▶ Use native plants
 - ▶ Control invasives
 - ▶ Maintain healthy soils
 - ▶ Retain rainwater on-site
- (Policy Plan, Glossary)



Policy Plan – Environment Element

- ▶ Air Quality
- ▶ Water Quality
- ▶ Transportation Noise
- ▶ Light Pollution
- ▶ Environmental Hazards (soils, floods, pipelines)
- ▶ EQC
- ▶ Tree Cover
- ▶ Conservation Easements
- ▶ Environmental Monitoring
- ▶ Green Building
- ▶ Tidal Shoreline Erosion Control
- ▶ + Chesapeake Bay Supplement

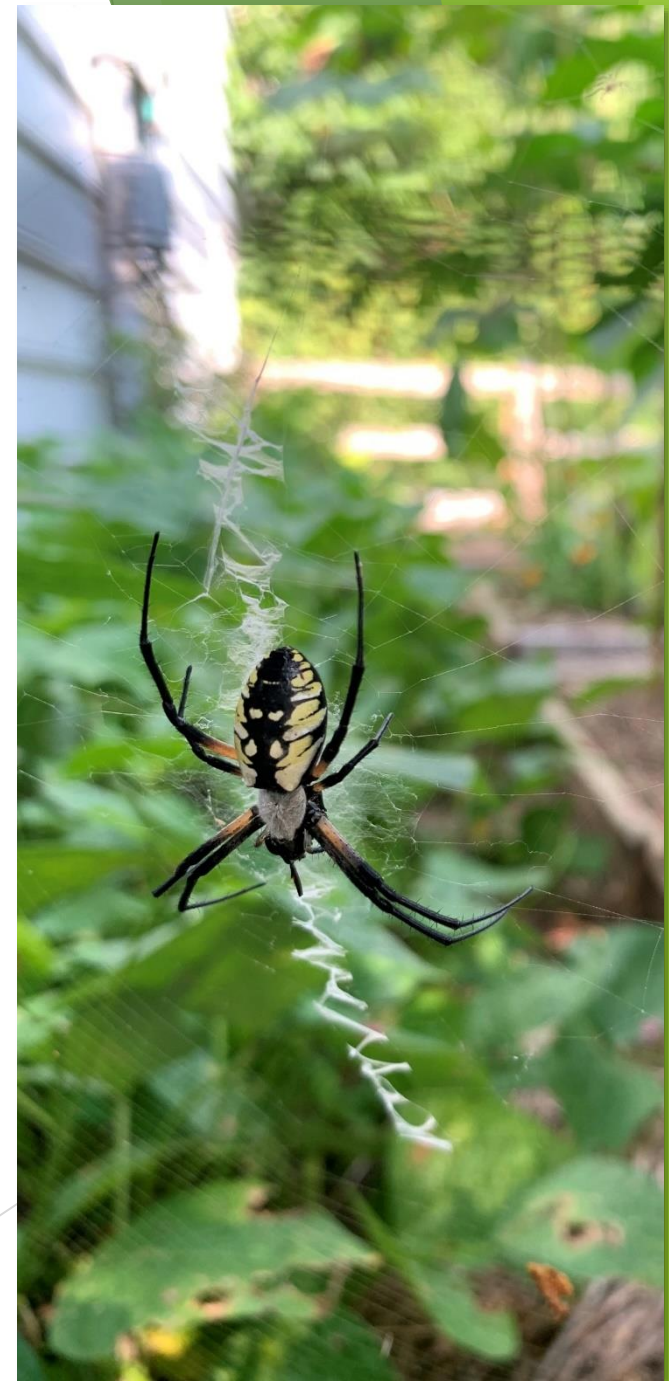


Reston - Biophilic Cities Partner

Partner since 2018

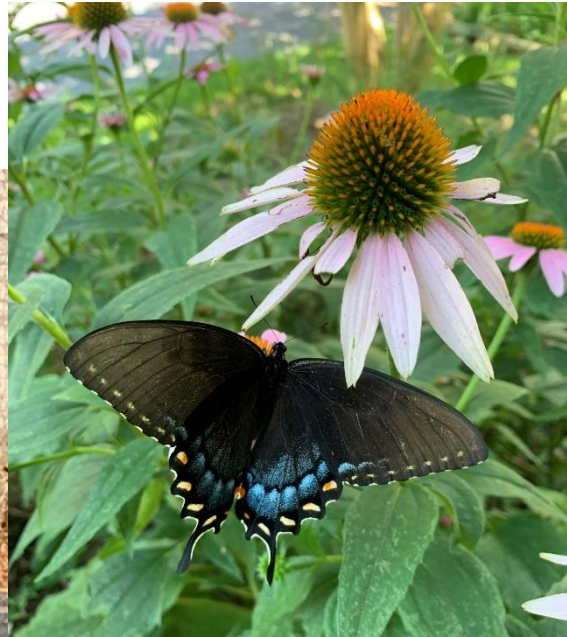
- ▶ One of seven original Reston Goals: “That beauty – structural and natural – is a necessity of the good life and should be fostered.”
- ▶ “As Reston accommodates increasing population densities, it strives to maintain its natural areas that give a sense of well-being to residents while providing critically important ecological services.”

(BiophilicCities.org/Reston)



Biophilic Cities Network

- Importance of daily contact with nature as an element of a meaningful urban life
 - Ethical responsibility of cities to conserve nature as shared habitat for non-human life and people
- (BiophilicCities.org)



Reston Association State of the Environment Report (RASER)

- ▶ Environmental Setting
- ▶ Air Quality
- ▶ Water Resources
- ▶ Vegetation
- ▶ Wildlife
- ▶ Solid Waste Management
- ▶ Hazardous Materials & Toxic Waste
- ▶ Light Pollution
- ▶ Noise Pollution
- ▶ Environmental Education & Outreach
- ▶ Climate Change
- ▶ Biophilic Cities Network



Landscape Qualities

- ▶ Experientially Rich – texture; sound
- ▶ Ecologically Sound – functionality
- ▶ “Of the Place” – recognize where you are
- ▶ Dynamic – changes through the seasons and years

(Darrel Morrison, Landscape Architect)

Landscape Themes

- ▶ Diversity, natural processes, & naturally occurring patterns

(Darrel Morrison, Landscape Architect)



Reston Environmental Policies

Joe Gorney, AICP, Senior Environmental Planner
DPD, Planning Division, Environment & Development Review Branch

