

## HISTORIC OVERLAY DISTRICTS - 2017


FAIRFAX COUNTY, VA

Historic Overlay Districts current to December 2017

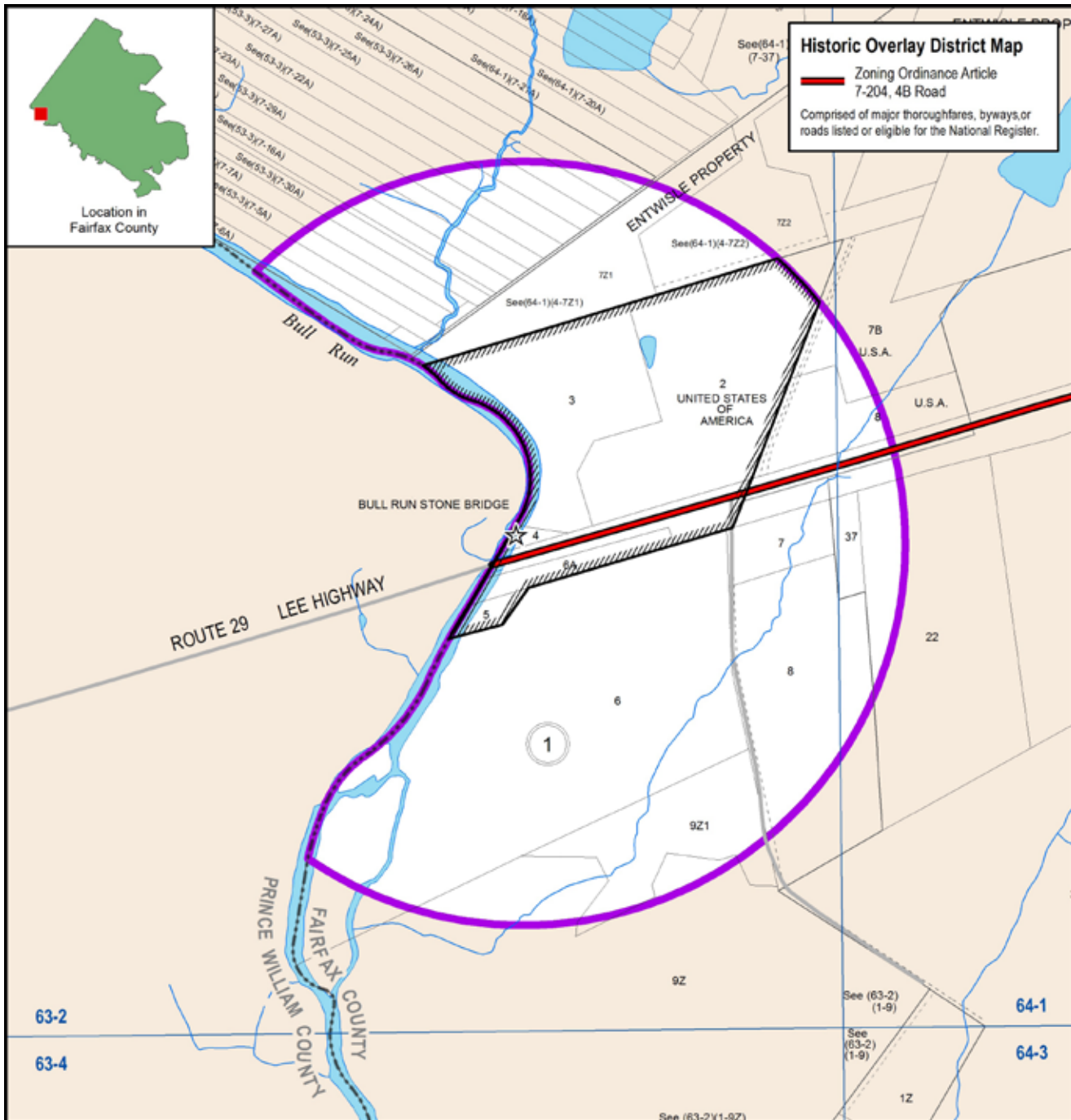
Map prepared by Planning Division,  
Department of Planning & Zoning



### Legend

 Historic Overlay District

 0 5 MILES



# BULL RUN STONE BRIDGE

HISTORIC OVERLAY DISTRICT  
FAIRFAX COUNTY, VA

Adopted by the Board of Supervisors 1972  
Supervisor District: Sully  
Planning Area and District: Area III, Bull Run  
Community Planning Sector: BR5 Stone Bridge  
All content, including parcel base, revised to December 2017  
Map prepared by Planning Division,  
Department of Planning & Zoning



## Legend

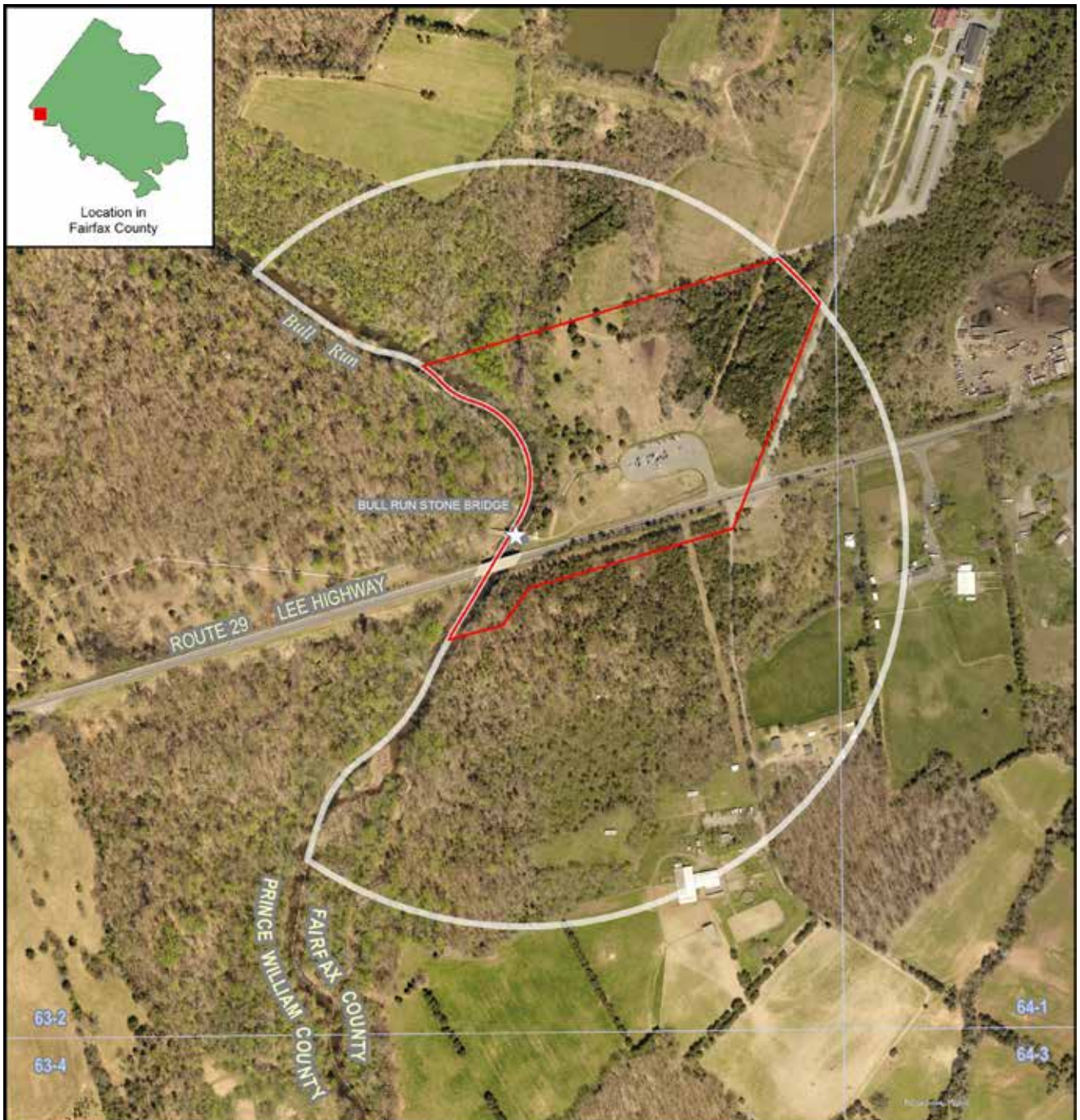
- ☆ Historic Property
  - Contributing Property
  - ▨ District Core Boundary
  - ▬ District Boundary
- 0 500 FEET

Document Path: G:\projects\ocp\pd\historic\_districts\BullRun\BullRun\_latest.mxd





Location in  
Fairfax County



## BULL RUN STONE BRIDGE

HISTORIC OVERLAY DISTRICT  
FAIRFAX COUNTY, VA

Adopted by the Board of Supervisors 1972  
Supervisor District: Sully  
Planning Area and District: Area III, Bull Run  
Community Planning Sector: BR5 Stone Bridge  
Revised to December 2017, aerial photo 2017  
Map prepared by Planning Division,  
Department of Planning & Zoning



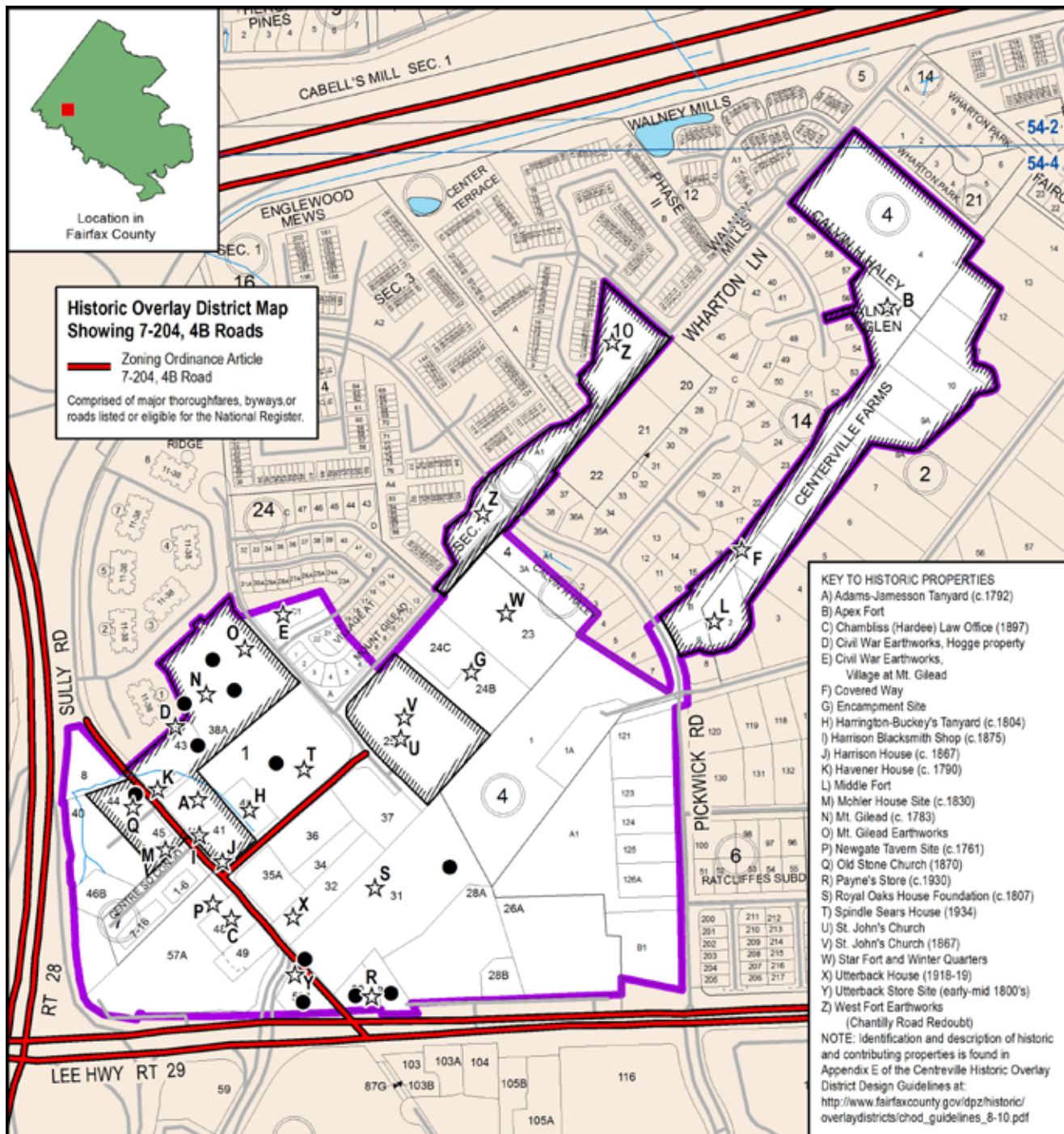
### Legend

- ★ Historic Property
- Contributing Property
- ▭ District Core
- District Boundary

0 500 FEET

Document Path: G:\projects\loc\pdf\historic\_districts\BullRun\BullRun\_latest\_aerial.mxd





# CENTREVILLE HISTORIC OVERLAY DISTRICT FAIRFAX COUNTY, VA

Adopted by the Board of Supervisors 1986, expanded 2007, revised 2010  
 Supervisor District: Sully  
 Planning Area and District: Area III, Bull Run  
 Community Planning Sector: BR6 Centreville  
 All content, including parcel base, revised to December 2017  
 Map prepared by Planning Division,  
 Department of Planning & Zoning



## Legend

- ☆ Historic Property  
see KEY above
- Contributing Property
- ▤ District Core Boundary
- ▬ District Boundary
- 0 500 FEET

Document Path: G:\projects\locp\pd\historic\_districts\Centreville\Centreville\_latest.mxd





Location in  
Fairfax County



## CENTREVILLE

HISTORIC OVERLAY DISTRICT  
FAIRFAX COUNTY, VA

Adopted by the Board of Supervisors 1986, expanded 2007, revised 2010

Supervisor District: Sully

Planning Area and District: Area III, Bull Run

Community Planning Sector: BR6 Centreville

Revised to December 2017, aerial photo 2017

Map prepared by Planning Division,

Department of Planning & Zoning



### Legend

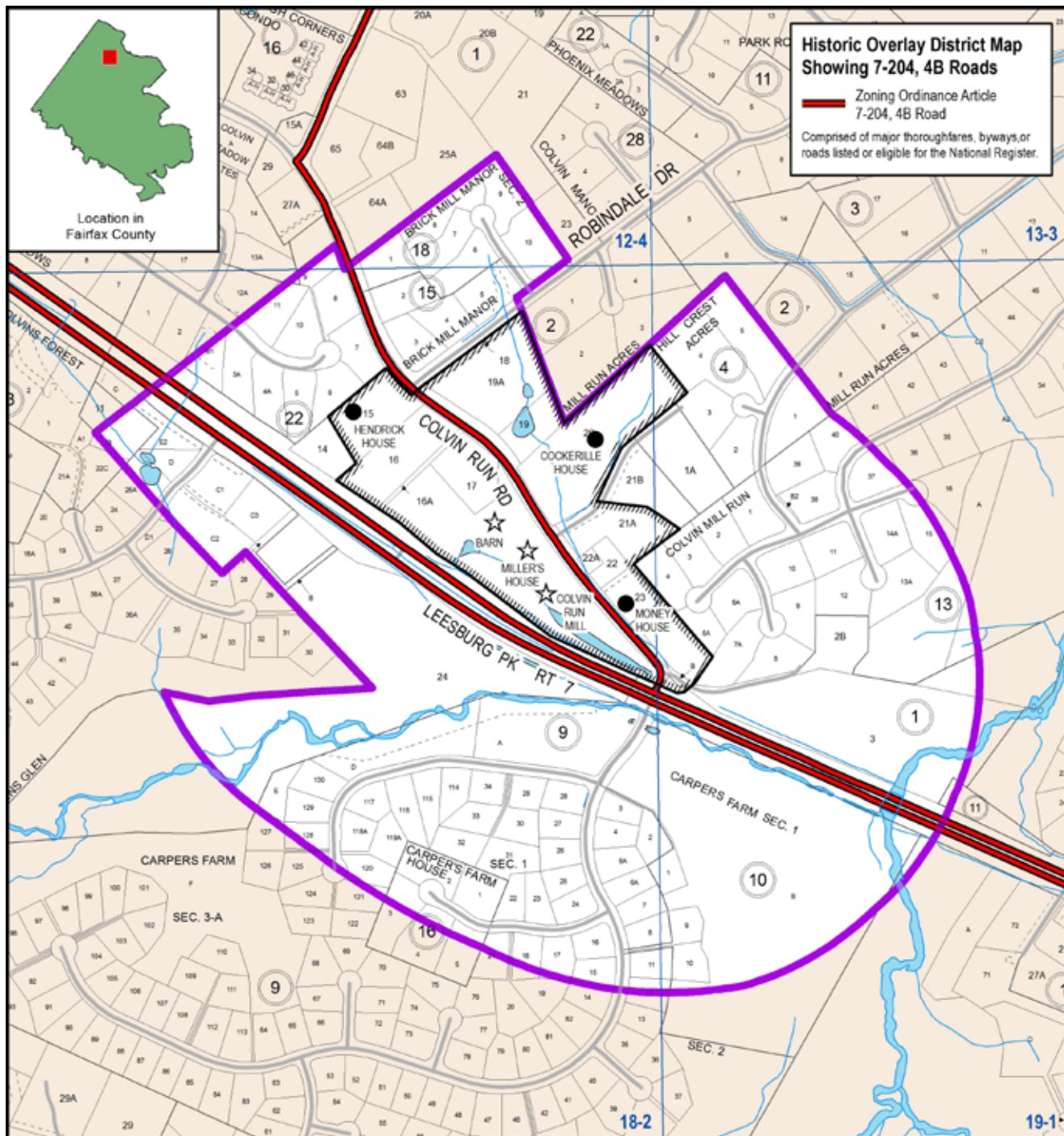
- ★ Historic Property  
see KEY above
- Contributing Property

District Core

District Boundary

0 500 FEET

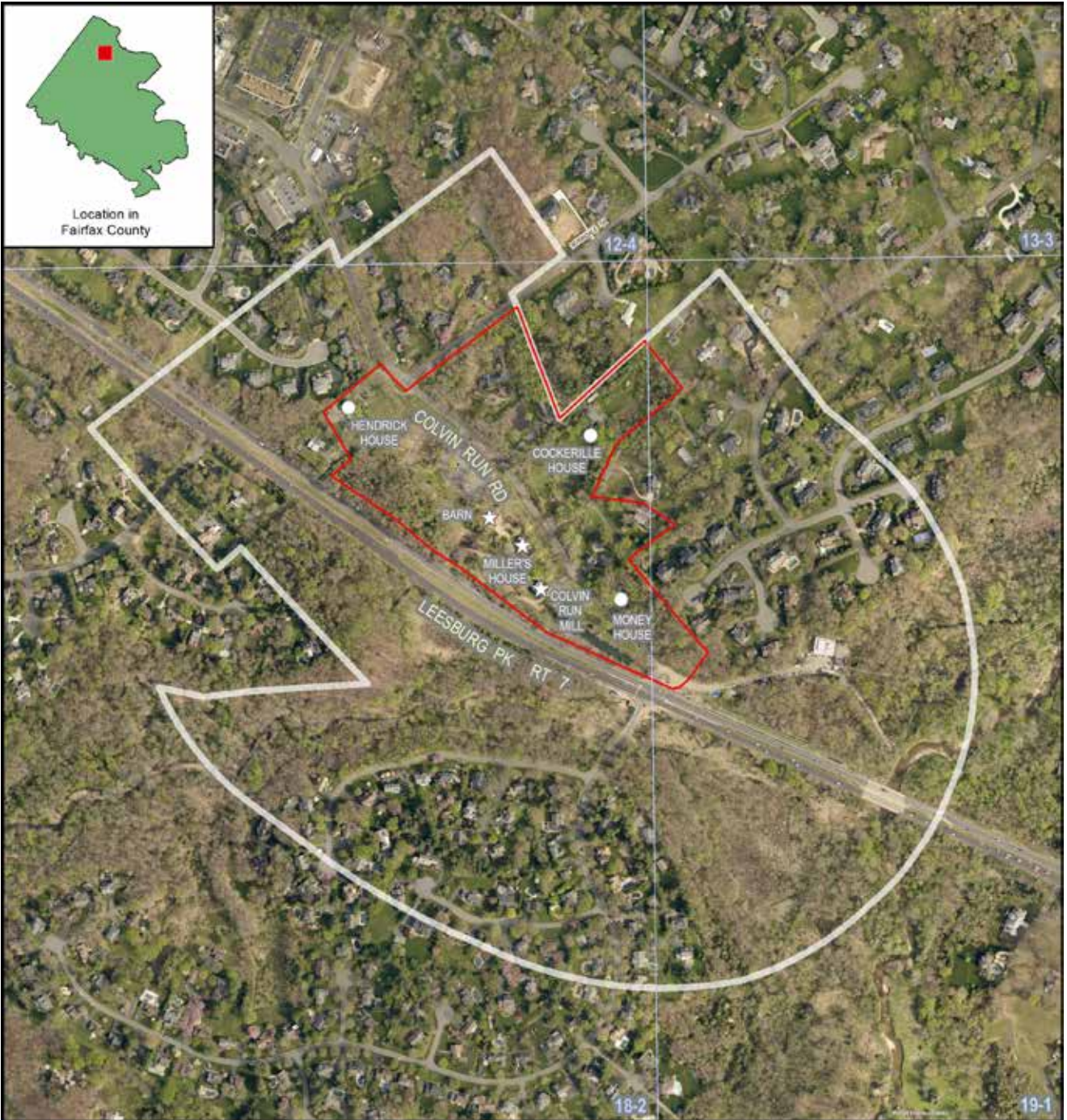








Location in  
Fairfax County



## COLVIN RUN MILL

HISTORIC OVERLAY DISTRICT  
FAIRFAX COUNTY, VA

Adopted by the Board of Supervisors 1972  
Supervisor Districts: Dranesville, Hunter Mill  
Planning Area and District: Area III, Upper Potomac; Area II, McLean  
Community Planning Sector: UP3 Hickory, M7 Wolf Trap  
Revised to December 2017, aerial photo 2017  
Map prepared by Planning Division,  
Department of Planning & Zoning



### Legend

- ★ Historic Property
- Contributing Property

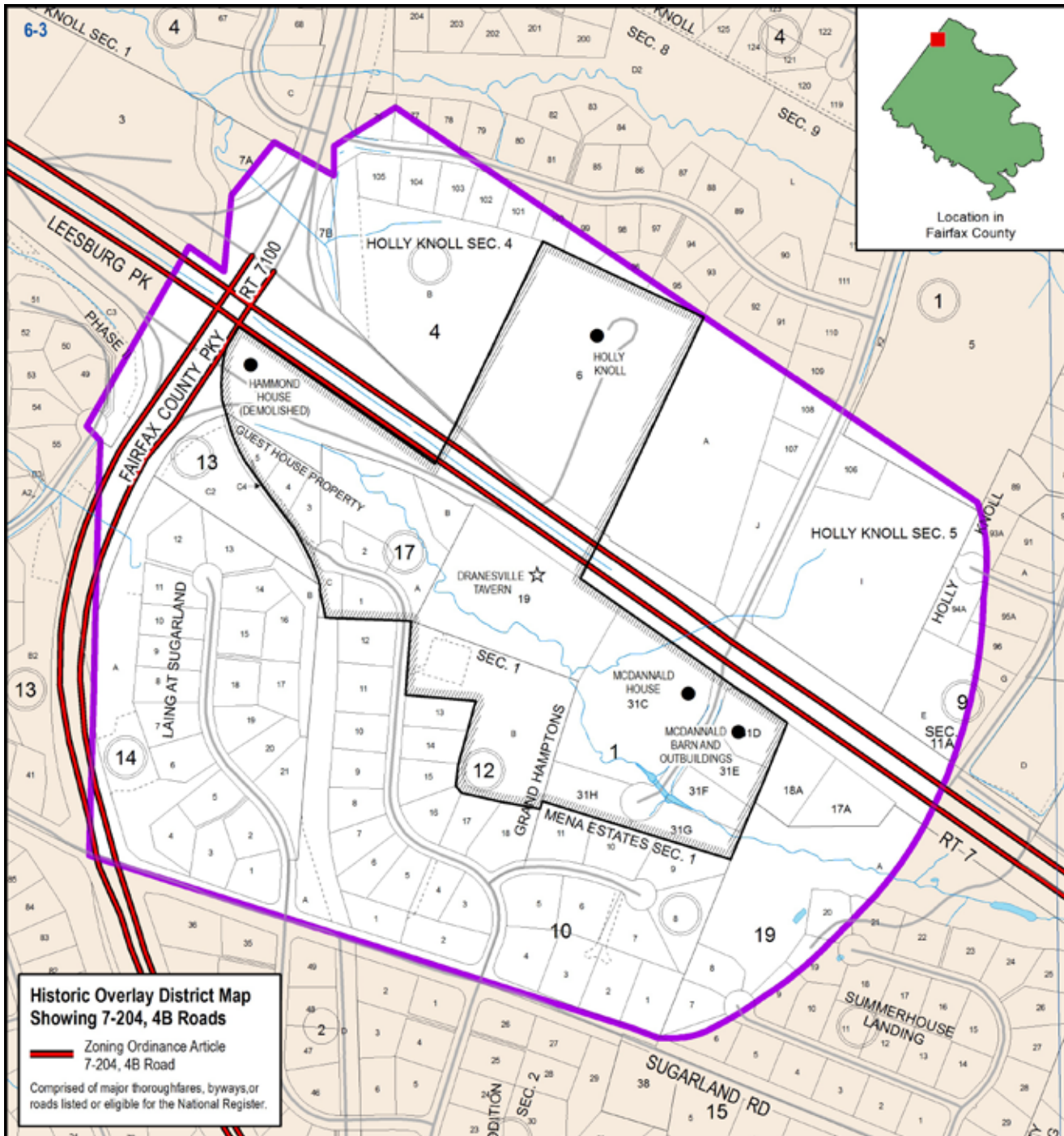
 District Core

 District Boundary

 FEET  
0 600

Document Path: G:\projects\oop\pd\historic\_districts\ColvinRun\ColvinRun\_latest\_aerial.mxd









# DRANESVILLE TAVERN

## HISTORIC OVERLAY DISTRICT

### FAIRFAX COUNTY, VA

Adopted by the Board of Supervisors 1972  
 Supervisor District: Dranesville  
 Planning Area and District: Area III, Upper Potomac  
 Community Planning Sector: UP4 Greater Herndon, UP2 Springvale  
 Revised to December 2017, aerial photo 2017  
 Map prepared by Planning Division,  
 Department of Planning & Zoning



#### Legend

- ★ Historic Property
- Contributing Property
- ▭ District Core
- ▬ District Boundary

0 500 FEET

Document Path: G:\projects\lopp\historic\_districts\Dranesville\Dranesville\_latest\_aerial.mxd









Location in  
Fairfax County

92-2



92-4

## HUNTLEY

HISTORIC OVERLAY DISTRICT  
FAIRFAX COUNTY, VA

Adopted by the Board of Supervisors 1976  
Supervisor District: Lee  
Planning Area and District: Area IV, Rose Hill, Mount Vernon  
Community Planning Sector: RH7 Huntley Meadows, MV2 Hybla Valley  
Revised to December 2017, aerial photo 2017  
Map prepared by Planning Division,  
Department of Planning & Zoning



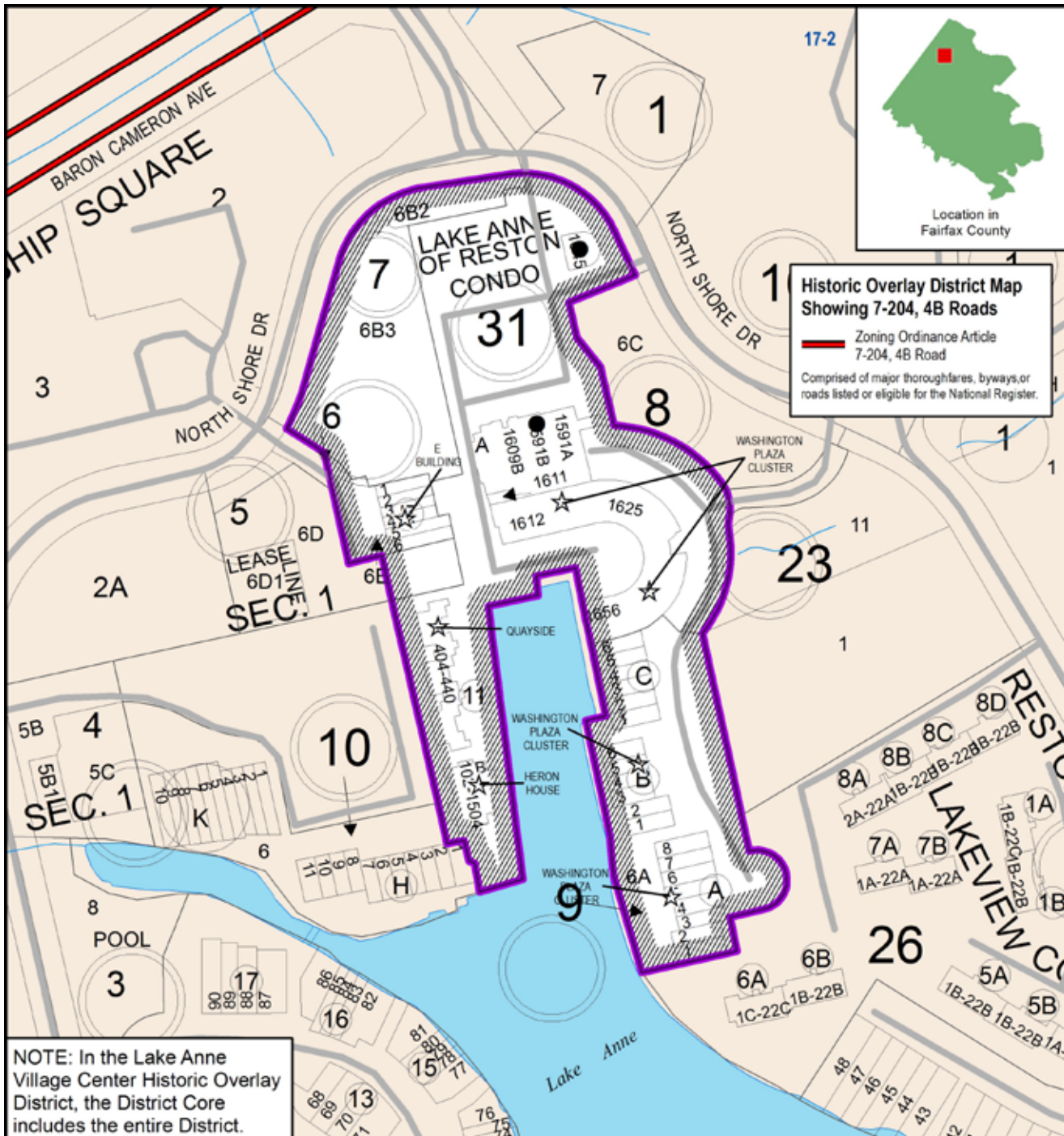
### Legend

- ★ Historic Property
- Contributing Property
- ▭ District Core
- District Boundary

0 500 FEET

Document Path: G:\projects\ocplpd\historic\_districts\Huntley\Huntley\_latest\_aerial.mxd





# **LAKE ANNE VILLAGE CENTER** **HISTORIC OVERLAY DISTRICT** **FAIRFAX COUNTY, VA**

Adopted by the Board of Supervisors 1984  
 Supervisor District: Hunter Mill  
 Planning Area and District: Area III, Upper Potomac  
 Community Planning Sector: UP5 Reston  
 All content, including parcel base, revised to December 2017  
 Map prepared by Planning Division,  
 Department of Planning & Zoning

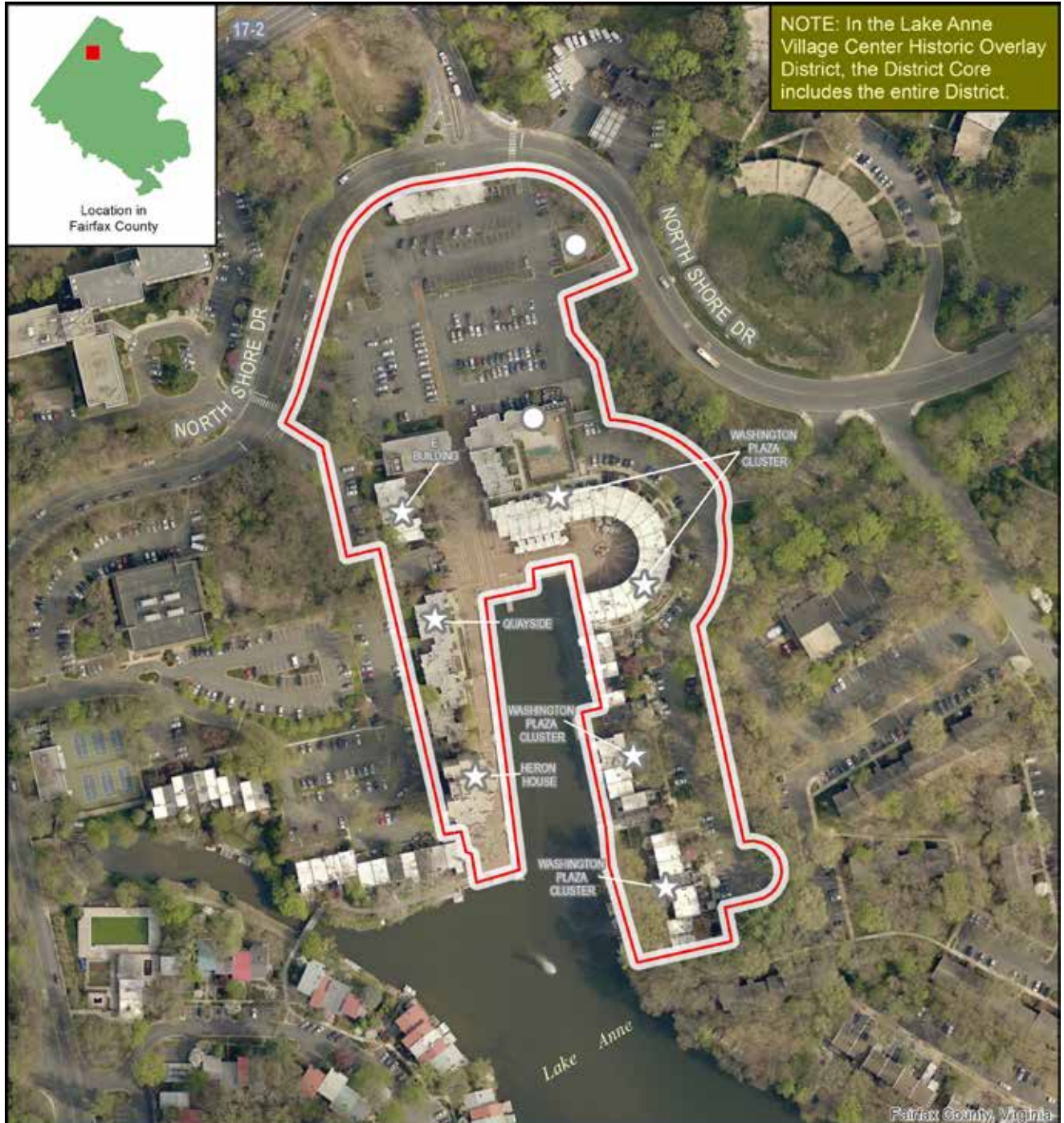
## **Legend**

- ☆ Historic Property
  - Contributing Property
  - ▨ District Core Boundary
  - ▬ District Boundary
- 0 200 FEET





Location in  
Fairfax County



## LAKE ANNE VILLAGE CENTER

HISTORIC OVERLAY DISTRICT  
FAIRFAX COUNTY, VA

Adopted by the Board of Supervisors 1984  
Supervisor District: Hunter Mill  
Planning Area and District: Area III, Upper Potomac  
Community Planning Sector: UP5 Reston  
Revised to December 2017, aerial photo 2017  
Map prepared by Planning Division,  
Department of Planning & Zoning



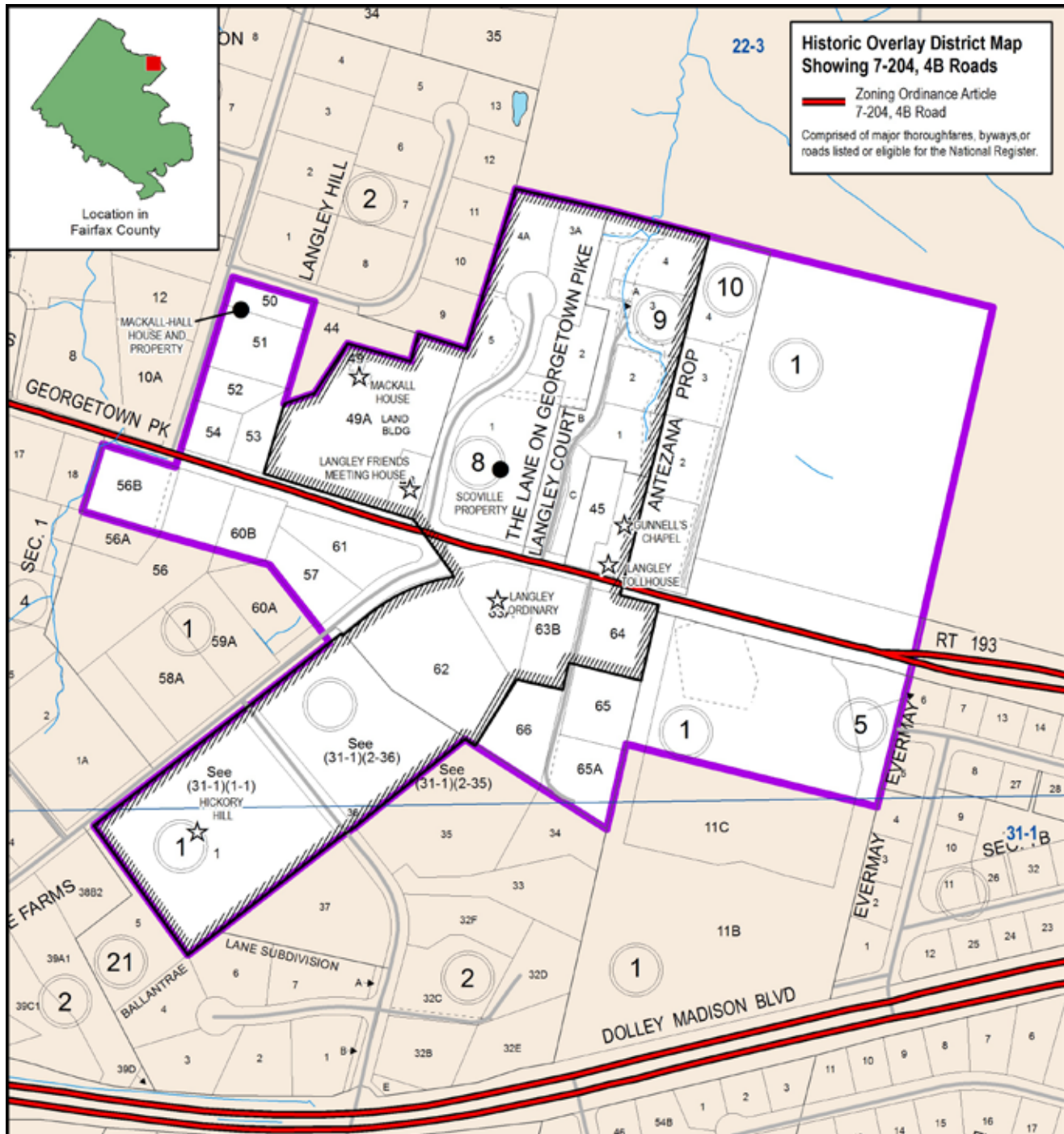
### Legend

- ★ Historic Property
- Contributing Property
- ▭ District Core
- ▬ District Boundary

0 200 FEET

Document Path: G:\projects\loop\pd\historic\_districts\LakeAnneVillage\LakeAnneVillageCenter\_latest\_aerial.mxd





## LANGLEY FORK

### HISTORIC OVERLAY DISTRICT

#### FAIRFAX COUNTY, VA

Adopted by the Board of Supervisors 1980  
 Supervisor District: Dranesville  
 Planning Area and District: Area II, McLean  
 Community Planning Sectors: M4 Balls Hill, M5 Potomac Palisades  
 All content, including parcel base, revised to December 2017  
 Map prepared by Planning Division,  
 Department of Planning & Zoning



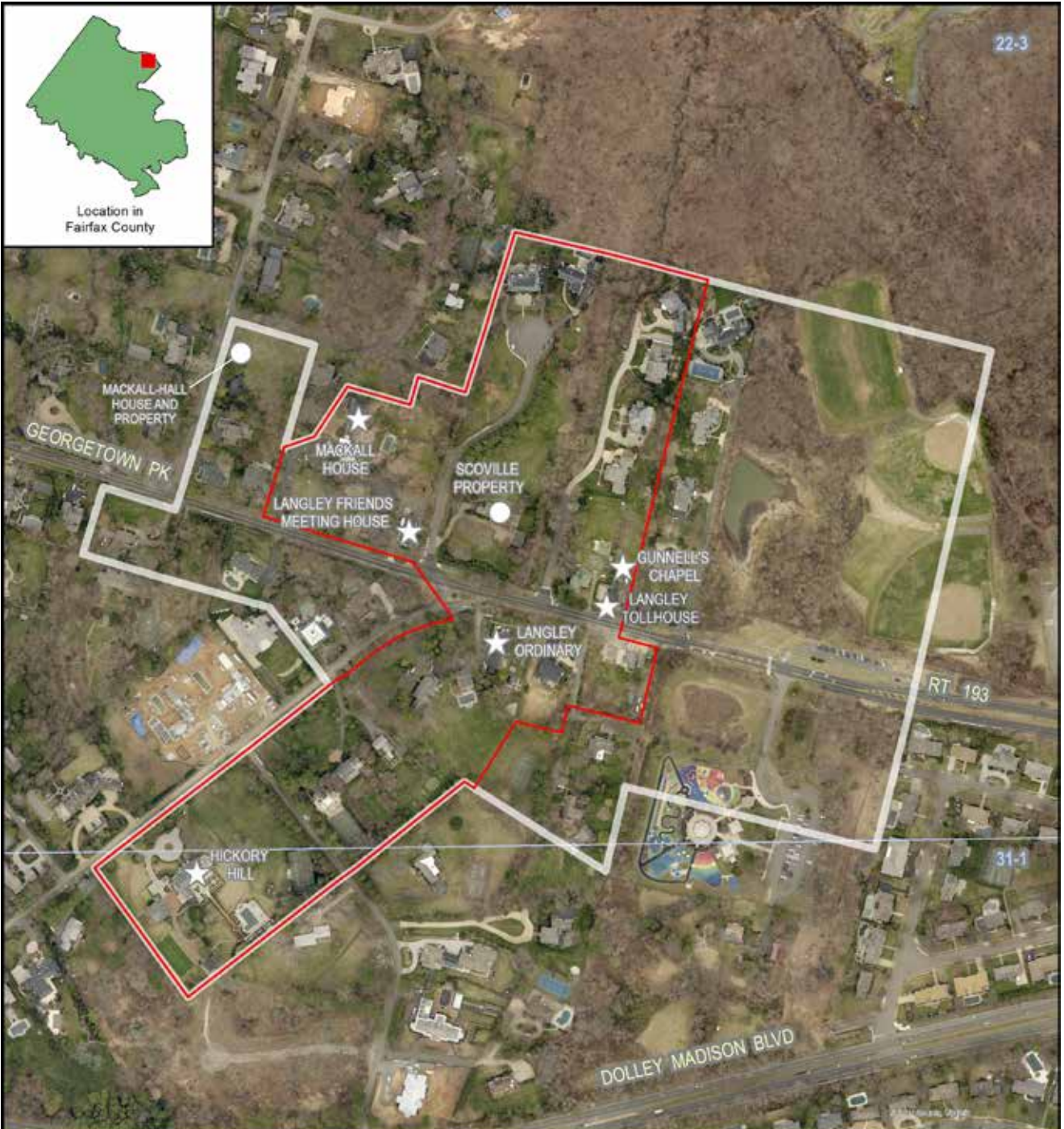
#### Legend

- ☆ Historic Property
- Contributing Property
- ▨ District Core Boundary
- ▬ District Boundary

0 400 FEET

Document Path: G:\projects\loc\pdf\historic\_districts\Langley Fork\LangleyFork\_latest.mxd





# **LANGLEY FORK** HISTORIC OVERLAY DISTRICT FAIRFAX COUNTY, VA

Adopted by the Board of Supervisors 1980  
 Supervisor District: Dranesville  
 Planning Area and District: Area II, McLean  
 Community Planning Sectors: M4 Balls Hill, M5 Potomac Palisades  
 Revised to December 2017, aerial photo 2017  
 Map prepared by Planning Division,  
 Department of Planning & Zoning

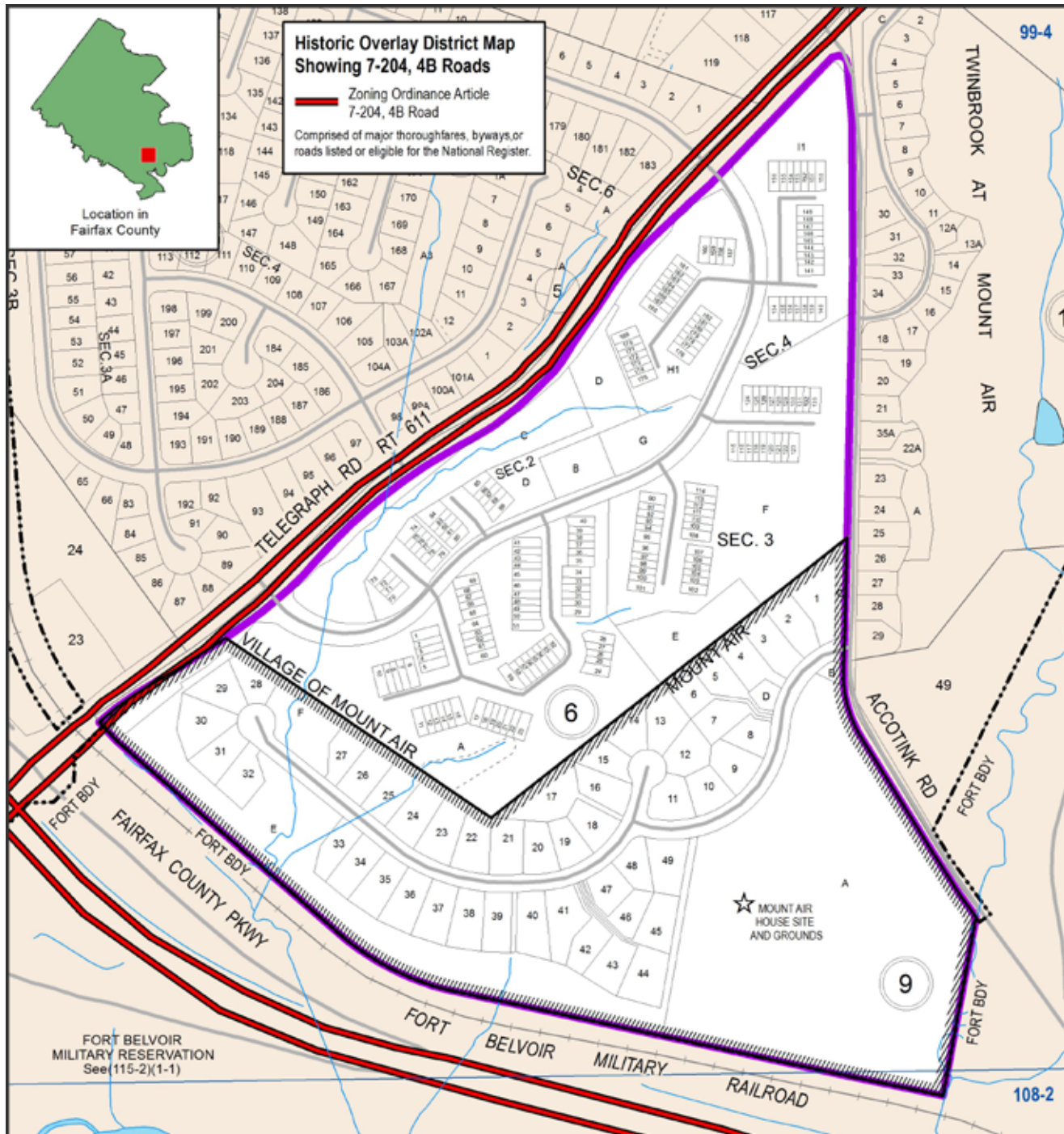


## **Legend**

- ★ Historic Property
- Contributing Property
- District Core
- District Boundary

0 400 FEET





# **MOUNT AIR** HISTORIC OVERLAY DISTRICT FAIRFAX COUNTY, VA

Adopted by the Board of Supervisors 1984  
Supervisor District: Mount Vernon  
Planning Area and District: Area IV, Springfield, Lower Potomac  
Community Planning Sector: S6 Newington, LP4 Fort Belvoir  
All content, including parcel base, revised to December 2017  
Map prepared by Planning Division,  
Department of Planning & Zoning



## **Legend**

- ☆ Historic Property
- Contributing Property
- //// District Core Boundary
- District Boundary

0 400 FEET

Document Path: G:\projects\locpl\historic\_districts\MountAir\MountAir\_latest.mxd





## MOUNT AIR HISTORIC OVERLAY DISTRICT FAIRFAX COUNTY, VA

Adopted by the Board of Supervisors 1984  
 Supervisor District: Mount Vernon  
 Planning Area and District: Area IV, Springfield, Lower Potomac  
 Community Planning Sector: S6 Newington, LP4 Fort Belvoir  
 Revised to December 2017, aerial photo 2017  
 Map prepared by Planning Division,  
 Department of Planning & Zoning



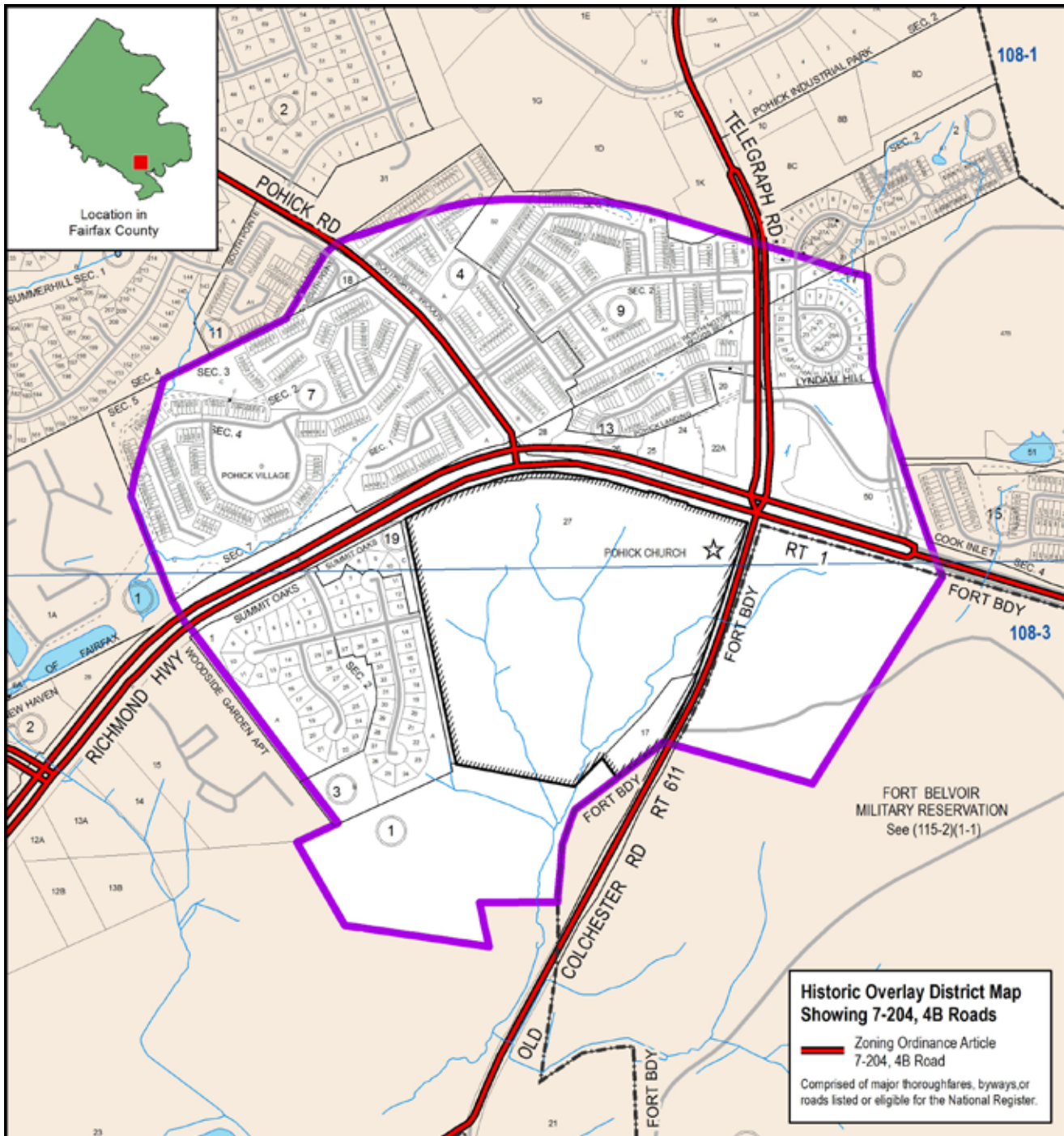
### Legend

- ★ Historic Property
- Contributing Property
- District Core
- District Boundary

0 400 FEET

Document Path: G:\projects\loc\pd\historic\_districts\MountAir\MountAir\_latest\_aerial.mxd





# **POHICK CHURCH** HISTORIC OVERLAY DISTRICT FAIRFAX COUNTY, VA

Adopted by the Board of Supervisors 1970  
 Supervisor District: Mount Vernon  
 Planning Area and District: Area IV, Lower Potomac  
 Community Planning Sectors: LP2 Lorton-South Route 1, LP4 Fort Belvoir  
 All content, including parcel base, revised to December 2017  
 Map prepared by Planning Division,  
 Department of Planning & Zoning



## **Legend**

- ☆ Historic Property
- Contributing Property
- //// District Core Boundary
- District Boundary

0 700 FEET





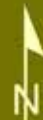
Location in  
Fairfax County



## POHICK CHURCH

HISTORIC OVERLAY DISTRICT  
FAIRFAX COUNTY, VA

Adopted by the Board of Supervisors 1970  
Supervisor District: Mount Vernon  
Planning Area and District: Area IV, Lower Potomac  
Community Planning Sectors: LP2 Lorton-South Route 1, LP4 Fort Belvoir  
Revised to December 2017, aerial photo 2017  
Map prepared by Planning Division,  
Department of Planning & Zoning



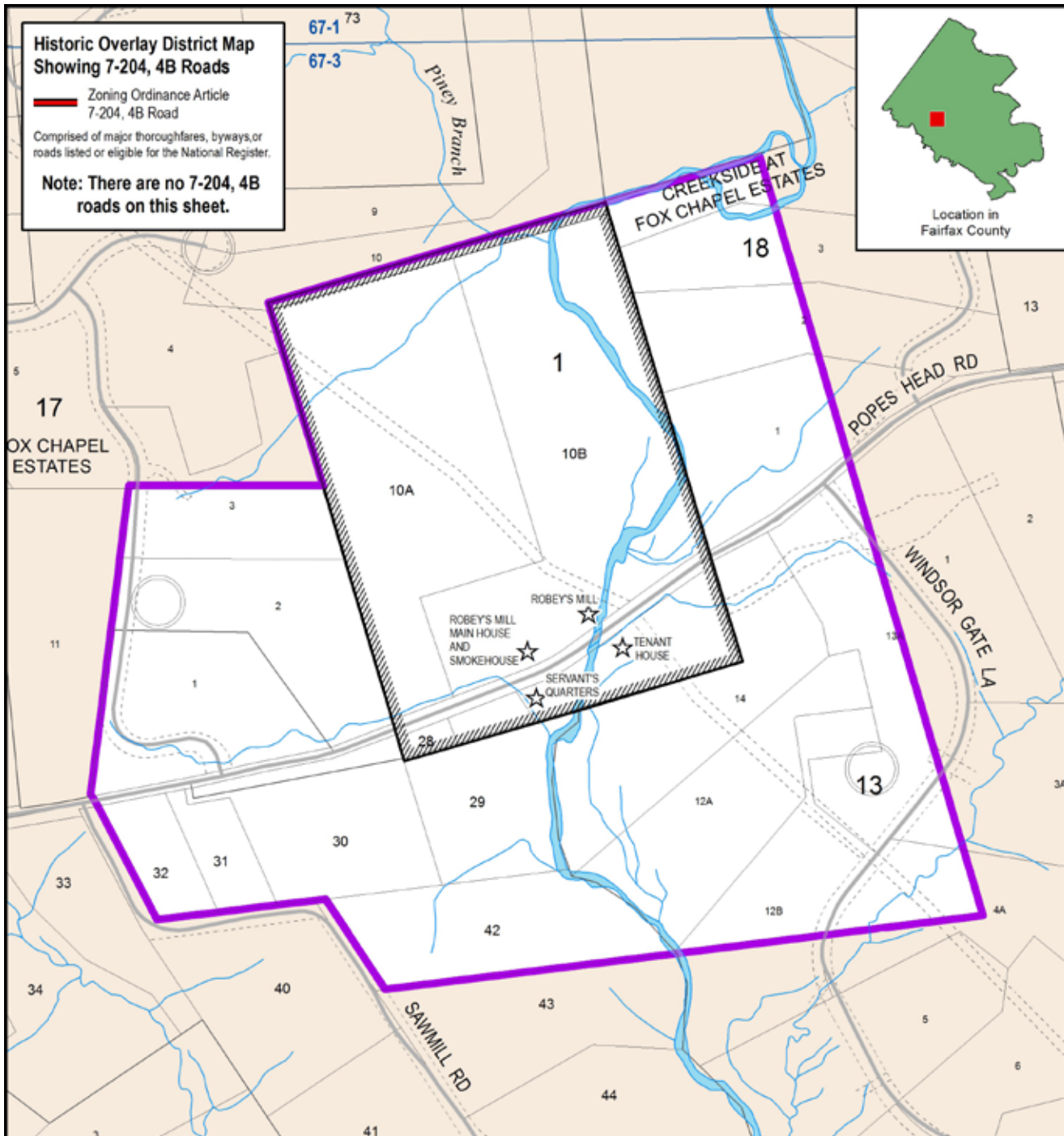
### Legend

- ★ Historic Property
- Contributing Property
- District Core
- District Boundary

0 700 FEET

Document Path: G:\projects\loc\pd\historic\_districts\PohickChurch\PohickChurch\_latest\_aerial.mxd





## ROBEY'S MILL

### HISTORIC OVERLAY DISTRICT

### FAIRFAX COUNTY, VA

Adopted by the Board of Supervisors 1980  
 Supervisor District: Springfield  
 Planning Area and District: Area III, Pohick  
 Community Planning Sector: P1 Twin Lakes  
 All content, including parcel base, revised to December 2017  
 Map prepared by Planning Division,  
 Department of Planning & Zoning



#### Legend

- ☆ Historic Property
- Contributing Property
- ▨ District Core Boundary
- ▬ District Boundary

0 400 FEET

Document Path: G:\projects\locpld\historic\_districts\RobeysMill\RobeysMill\_latest.mxd





Location in  
Fairfax County

67-1

67-3

Piney Branch

POPES HEAD RD

WINDSOR GATE LA

SAWMILL RD

ROBEY'S MILL

ROBEY'S MILL  
MAIN HOUSE  
AND  
SMOKEHOUSE

TENANT  
HOUSE

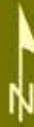
SERVANTS  
QUARTERS

## ROBEY'S MILL

### HISTORIC OVERLAY DISTRICT

FAIRFAX COUNTY, VA

Adopted by the Board of Supervisors 1980  
Supervisor District: Springfield  
Planning Area and District: Area III, Pohick  
Community Planning Sector: P1 Twin Lakes  
Revised to December 2017, aerial photo 2017  
Map prepared by Planning Division,  
Department of Planning & Zoning



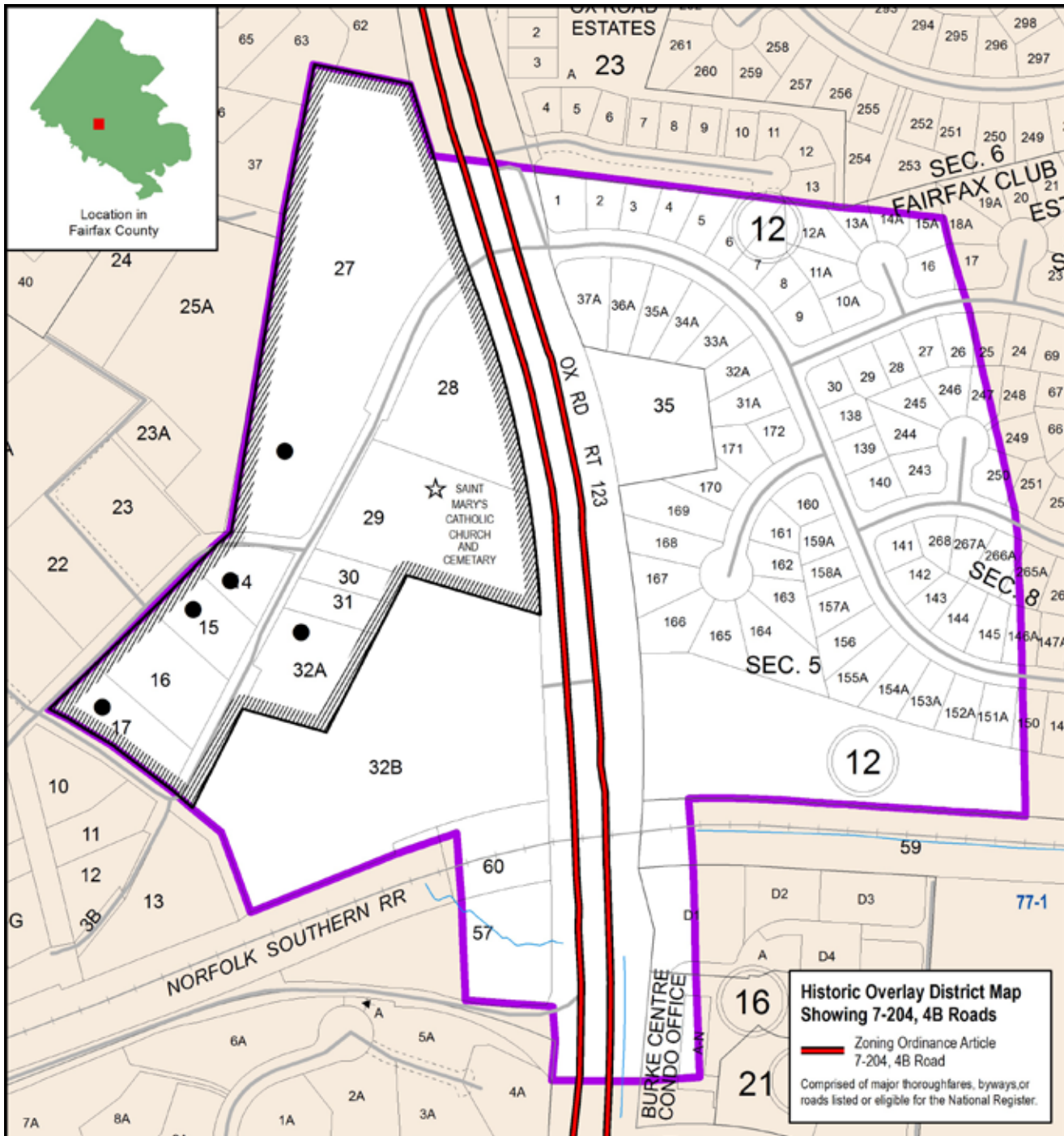
#### Legend

- ★ Historic Property
- Contributing Property
- ▭ District Core
- District Boundary

0 400 FEET

Document Path: G:\projects\loep\pd\historic\_districts\RobeysMill\RobeysMill\_latest\_aerial.mxd





# **SAINT MARY'S CHURCH**

## **HISTORIC OVERLAY DISTRICT FAIRFAX COUNTY, VA**

Adopted by the Board of Supervisors 1972

Supervisor Districts: Springfield, Braddock

Planning Area and District: Area III, Pohick

Community Planning Sectors: P1 Twin Lakes,

P2 Main Branch, P5 Dominion, P6 Middle Run

All content, including parcel base, revised to December 2017

Map prepared by Planning Division,

Department of Planning & Zoning



### **Legend**

- ☆ Historic Property
- Contributing Property
- //// District Core Boundary
- District Boundary

0 300 FEET

Document Path: G:\projects\lcp\pd\historic\_districts\SaintMarys\SaintMarys\_latest.mxd





Location in  
Fairfax County



# SAINT MARY'S CHURCH

HISTORIC OVERLAY DISTRICT  
FAIRFAX COUNTY, VA

Adopted by the Board of Supervisors 1972  
Supervisor Districts: Springfield, Braddock  
Planning Area and District: Area III, Pohick  
Community Planning Sectors: P1 Twin Lakes,  
P2 Main Branch, P5 Dominion, P6 Middle Run  
Revised to December 2017, aerial photo 2017  
Map prepared by Planning Division,  
Department of Planning & Zoning



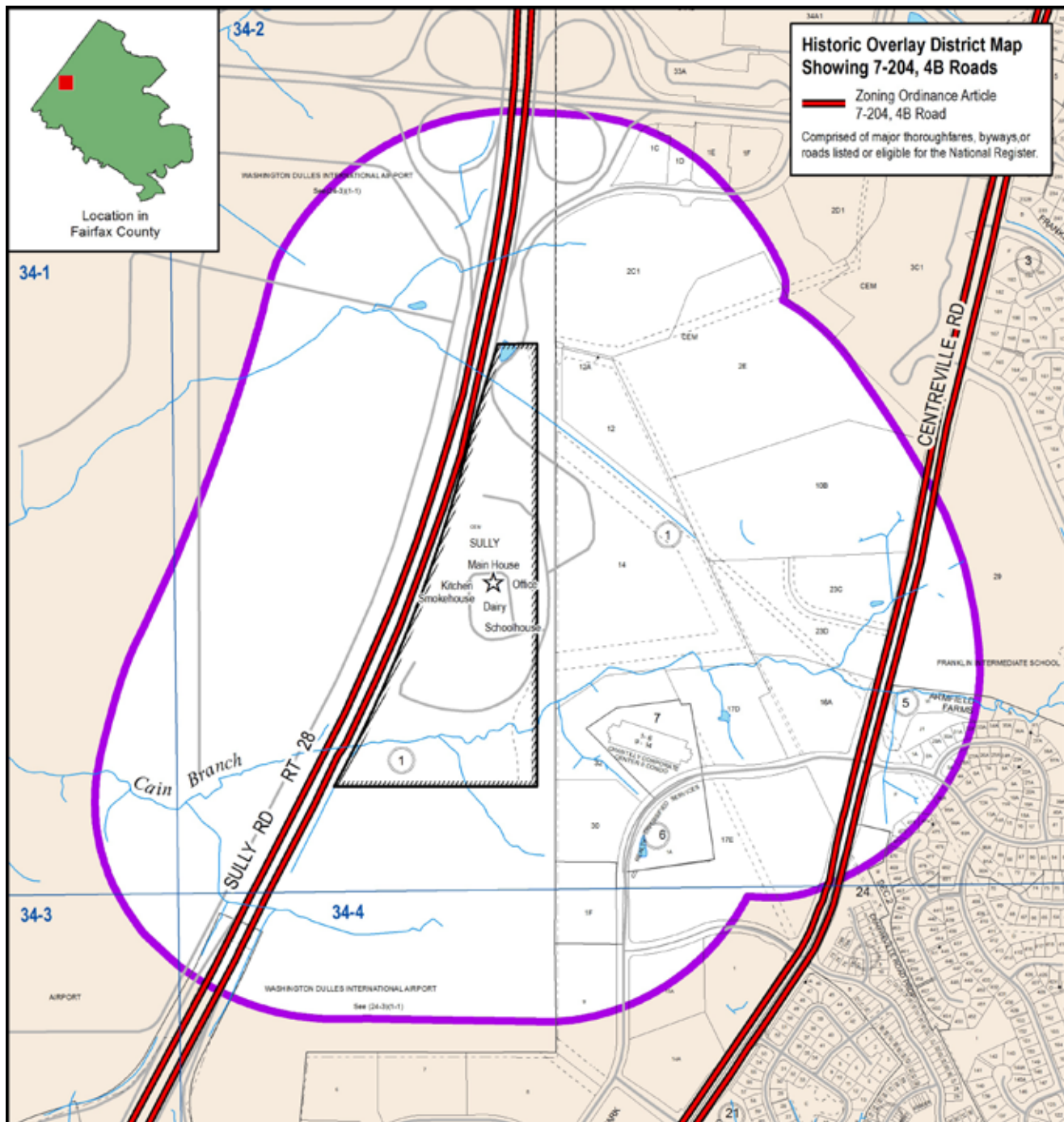
## Legend

- ★ Historic Property
- Contributing Property
- ▭ District Core
- District Boundary

0 300 FEET

Document Path: G:\project\stoc\pd\historic\_districts\SaintMarys\SaintMarys\_latest\_aerial.mxd





# **SULLY** **HISTORIC OVERLAY DISTRICT** **FAIRFAX COUNTY, VA**

Adopted by the Board of Supervisors 1971  
 Supervisor District: Sully  
 Planning Area and District: Area III, Bull Run, Upper Potomac  
 Community Planning Sectors: BR1 Dulles Airport, UP6 Sully,  
 BR2 Upper Cub Run, UP8 Lee-Jackson  
 All content, including parcel base, revised to December 2017  
 Map prepared by Planning Division,  
 Department of Planning & Zoning



## **Legend**

- ☆ Historic Property
- Contributing Property
- ▨ District Core Boundary
- ▬ District Boundary

0 800 FEET





Location in  
Fairfax County



## SULLY

HISTORIC OVERLAY DISTRICT  
FAIRFAX COUNTY, VA

Adopted by the Board of Supervisors 1971

Supervisor District: Sully

Planning Area and District: Area III, Bull Run, Upper Potomac

Community Planning Sectors: BR1 Dulles Airport, UP6 Sully,

BR2 Upper Cub Run, UP8 Lee-Jackson

Revised to December 2017, aerial photo 2017

Map prepared by Planning Division,  
Department of Planning & Zoning



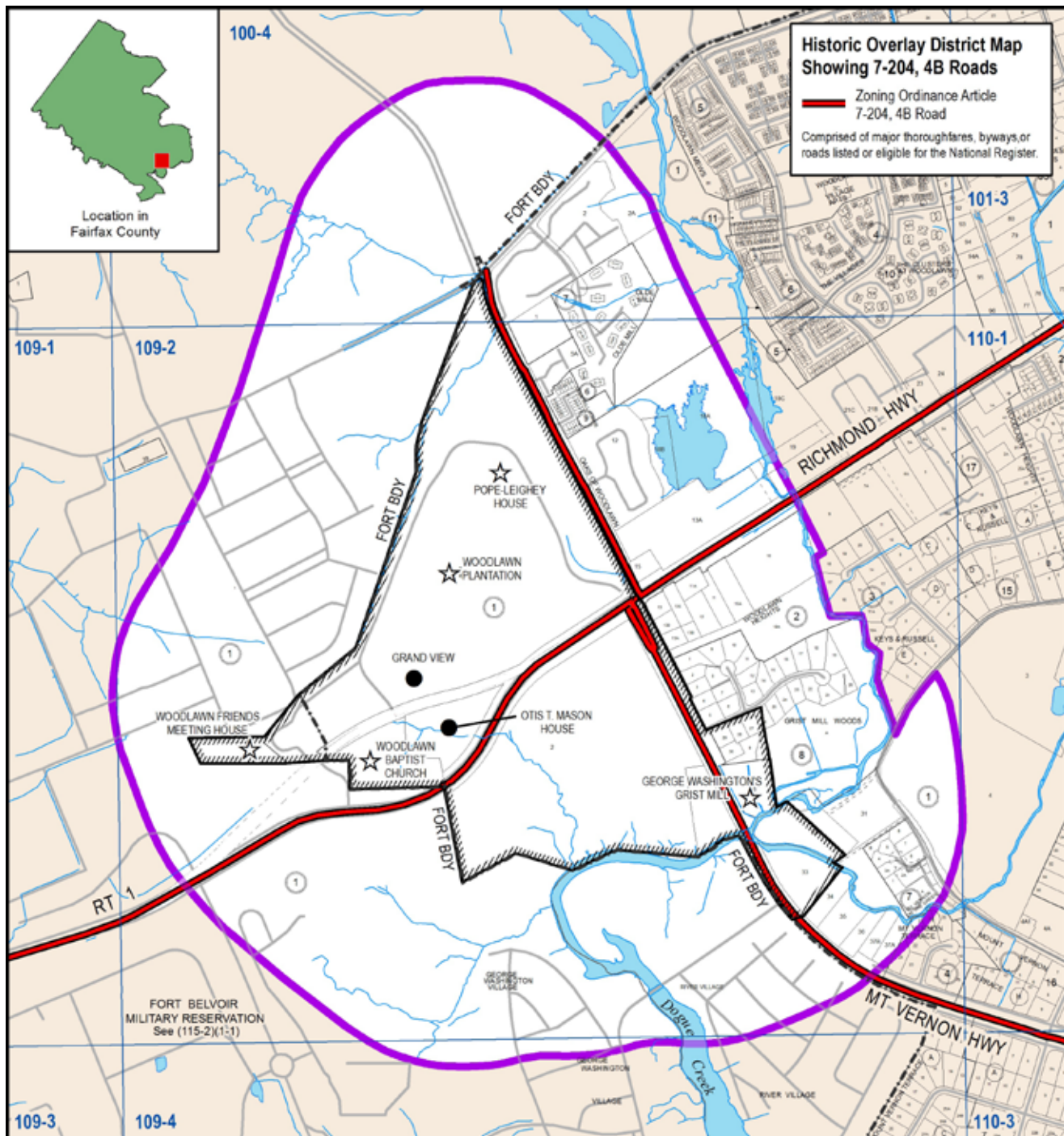
### Legend

- ★ Historic Property
- Contributing Property
- District Core
- District Boundary

0 800 FEET

Document Path: G:\projects\locpld\historic\_districts\Sully\Sully\_latest\_aerial.mxd









## WOODLAWN

### HISTORIC OVERLAY DISTRICT

#### FAIRFAX COUNTY, VA

Adopted by the Board of Supervisors 1971

Supervisor District: Mount Vernon

Planning Area and District: Area IV, Mount Vernon, Lower Potomac

Community Planning Sectors: MV7 Mount Vernon, MV8 Woodlawn, LP4 Fort Belvoir

Revised to December 2017, aerial photo 2017

Map prepared by Planning Division,  
Department of Planning & Zoning



#### Legend

- ★ Historic Property
- Contributing Property
- ▭ District Core
- District Boundary

0 1000 FEET

Document Path: G:\projects\locpld\historic\_districts\Woodlawn\Woodlawn\_latest\_aerial.mxd









Document Path: G:\projects\ocp\pdf\historic\_districts\Lorton\z-WORKSHOP-AERIAL-Location of Proposed Lorton Historic Overlay District.mxd  
Date Saved: 10/24/2017 1:55:57 PM





Path to this booklet as a pdf document:

G:\projects\locp\pd\historic\_districts\^PDFs&BMPs\HOD Maps\ ^^All HODs as booklet Dec 2017.pdf and

G:\projects\locp\pd\historic\_districts\^PDFs&BMPs\HOD Maps\ ^^small\_for\_Web\_All HODs as booklet Dec 2017.pdf

Path to this booklet as an InDesign project:

G:\projects\locp\pd\historic\_districts\^PDFs&BMPs\HOD Maps\ ^^^printer\_project\_in\_InDesign.indd