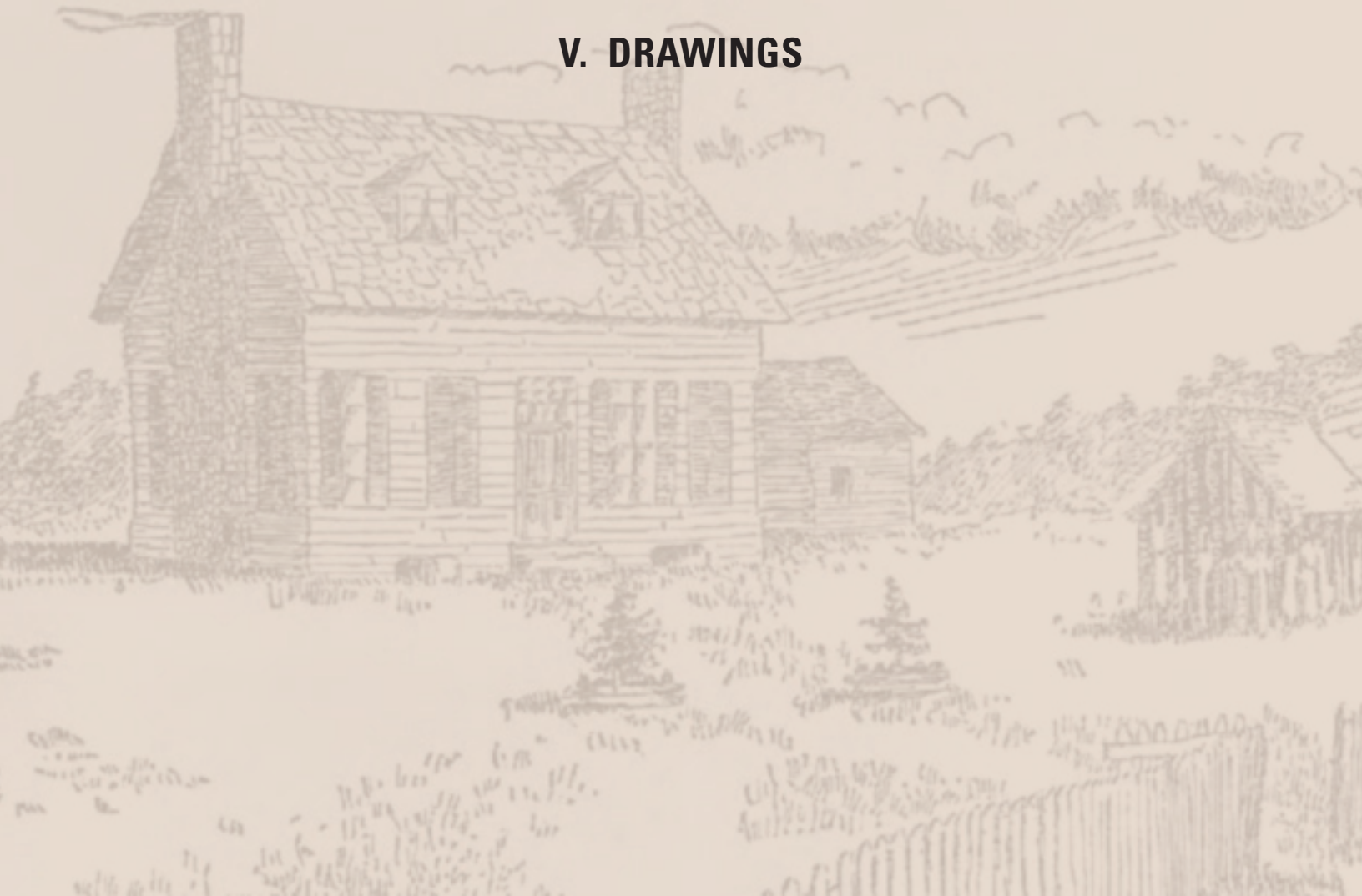


LAUREL HILL HOUSE

Historic Structure Report and Treatment Options



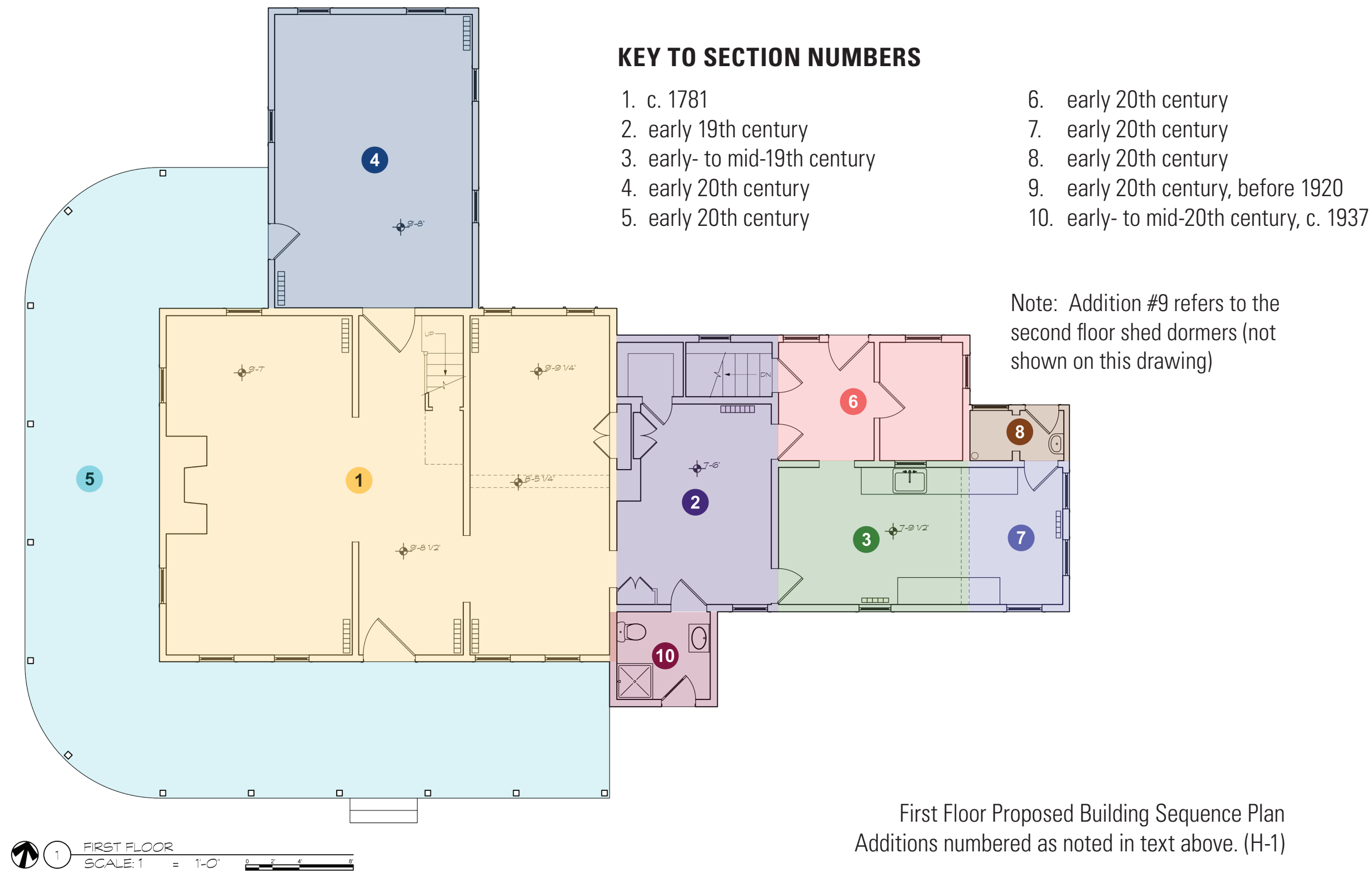
V. DRAWINGS



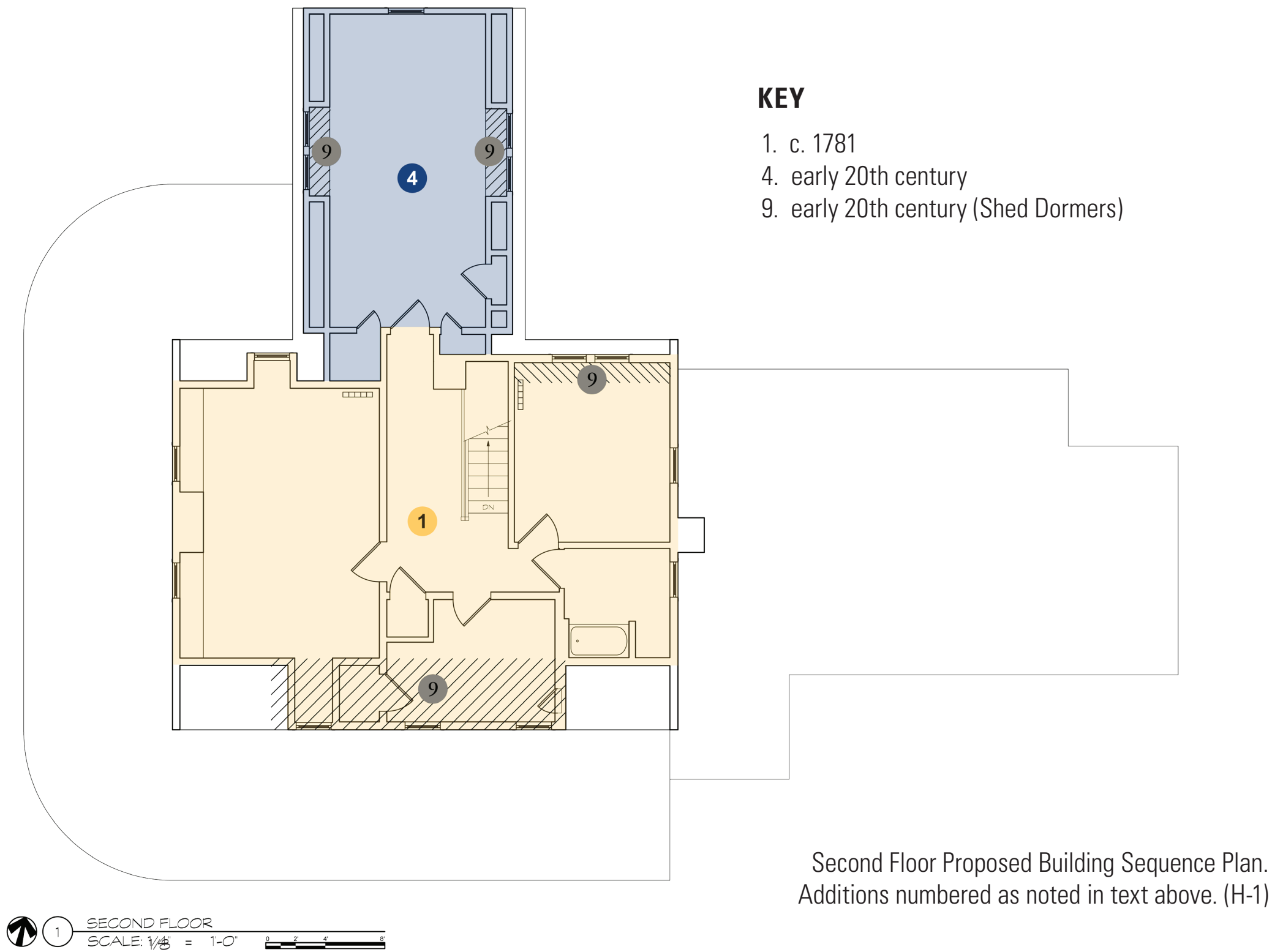
A. Site Plan



B. Proposed Building Construction Sequence Plan



B. Proposed Building Construction Sequence Plan



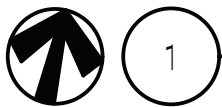
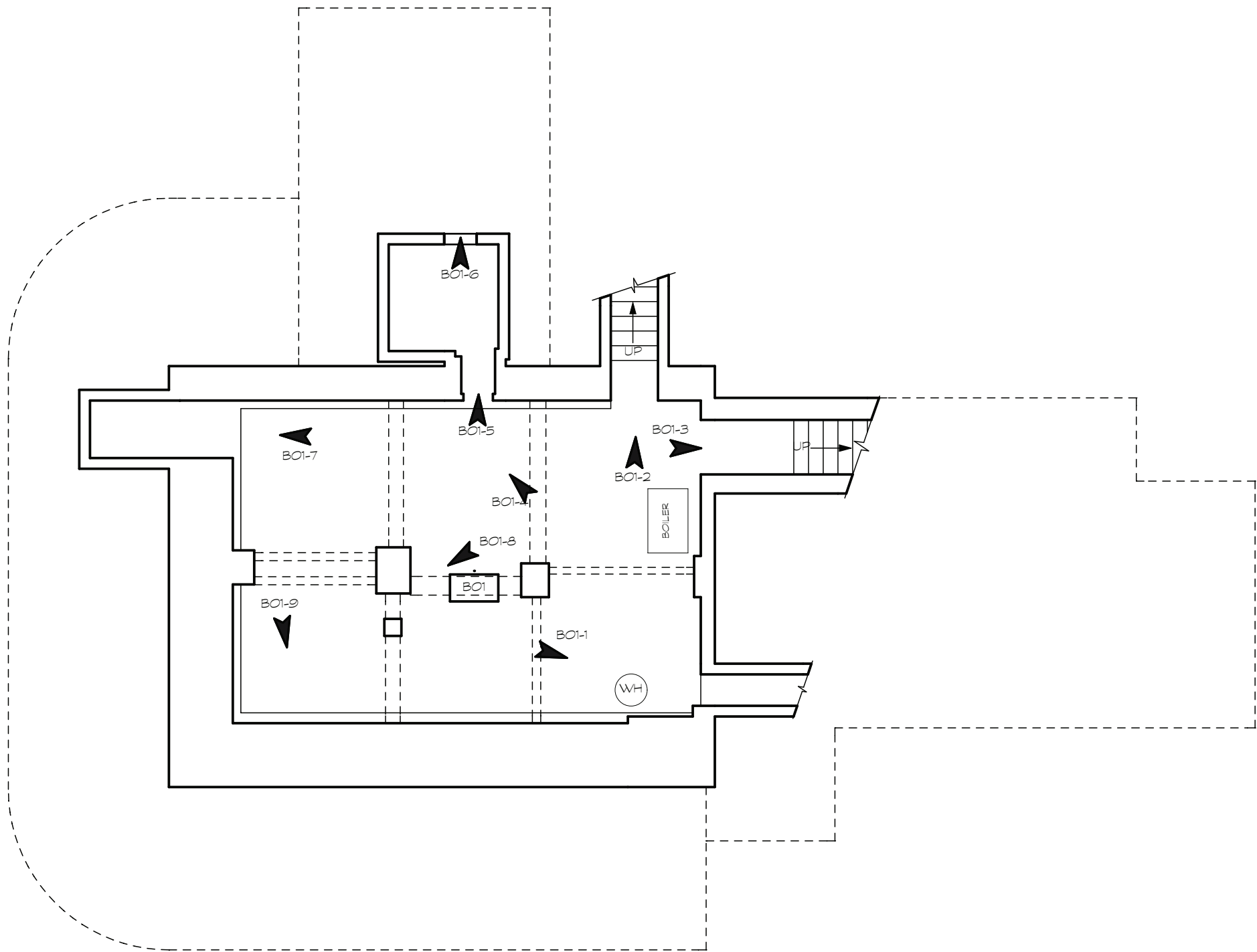


PHOTO LOCATION PLAN - BASEMENT
SCALE: 1/8" = 1'-0"

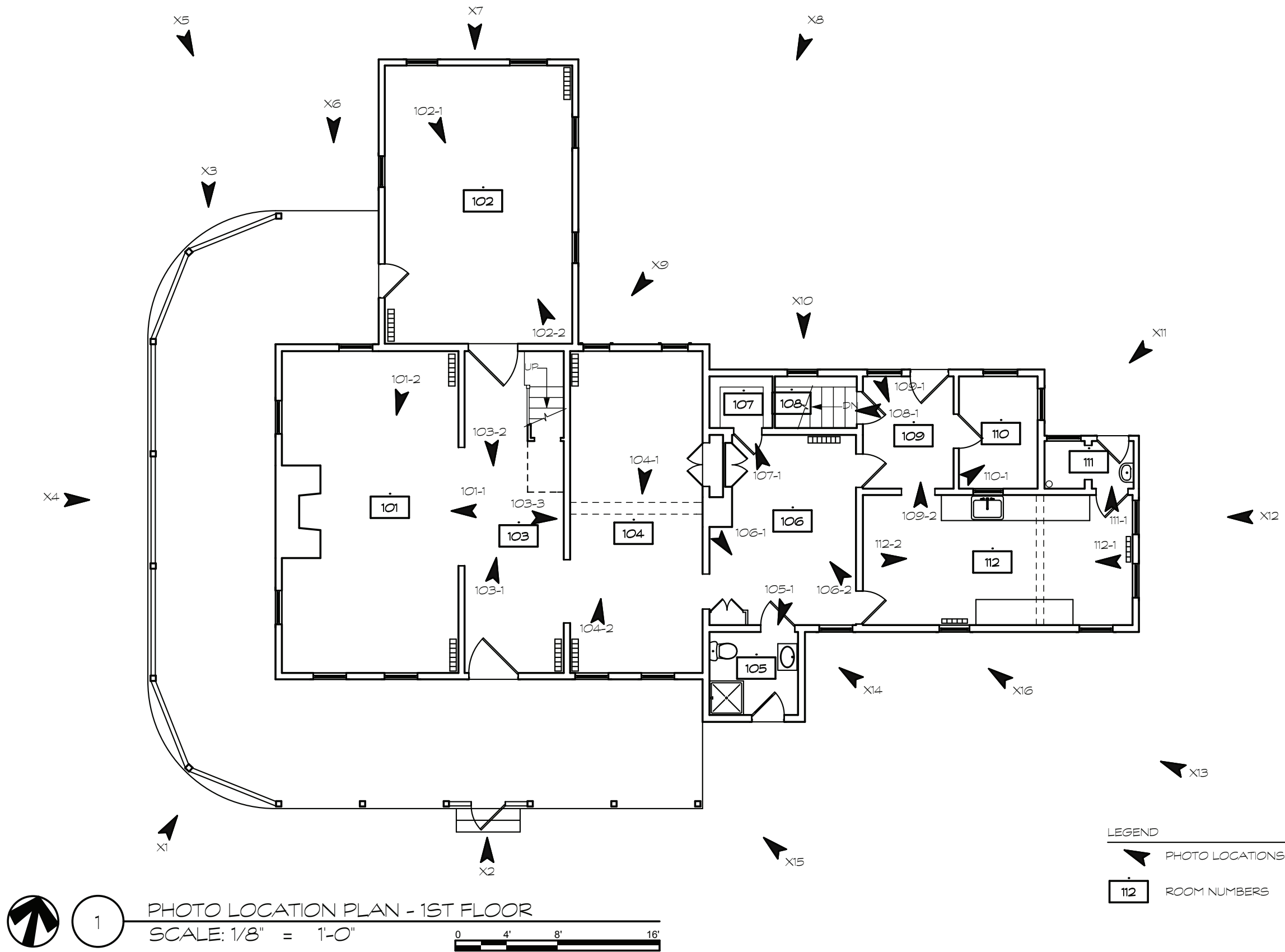


LEGEND

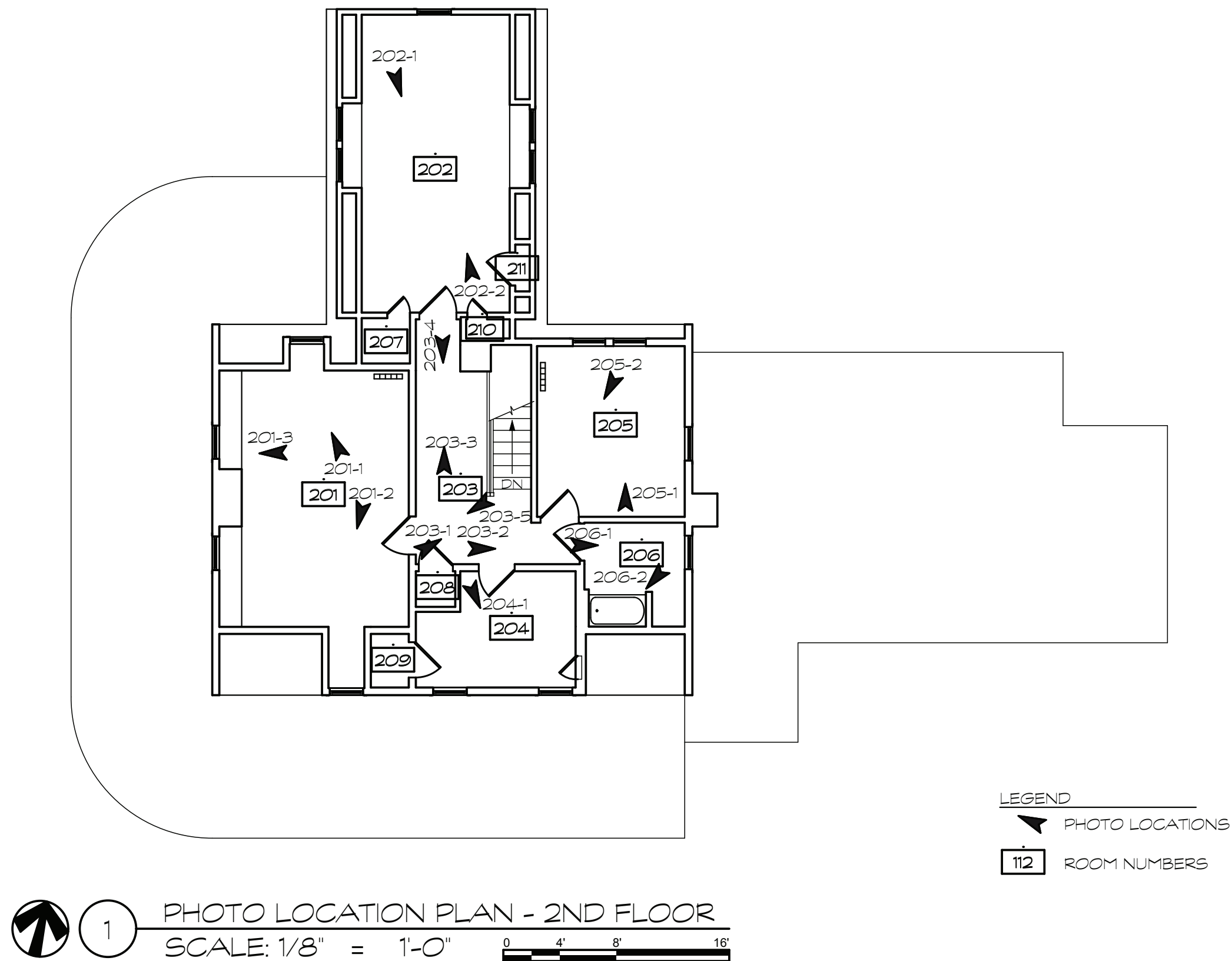
 PHOTO LOCATIONS

 ROOM NUMBERS

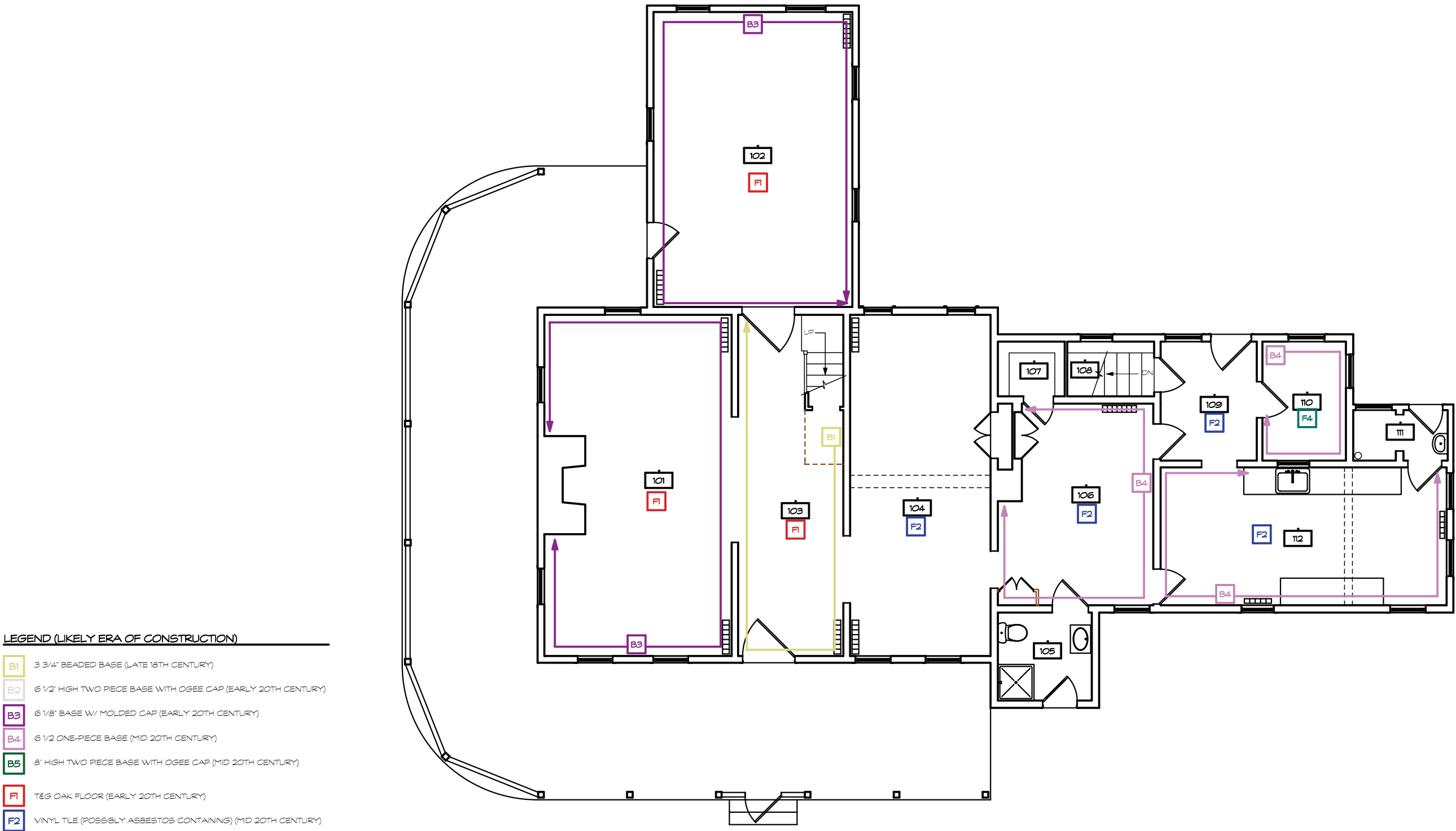
C. Existing Conditions/Historic Analysis Floor Plans *continued*



C. Existing Conditions/Historic Analysis Floor Plans *continued*



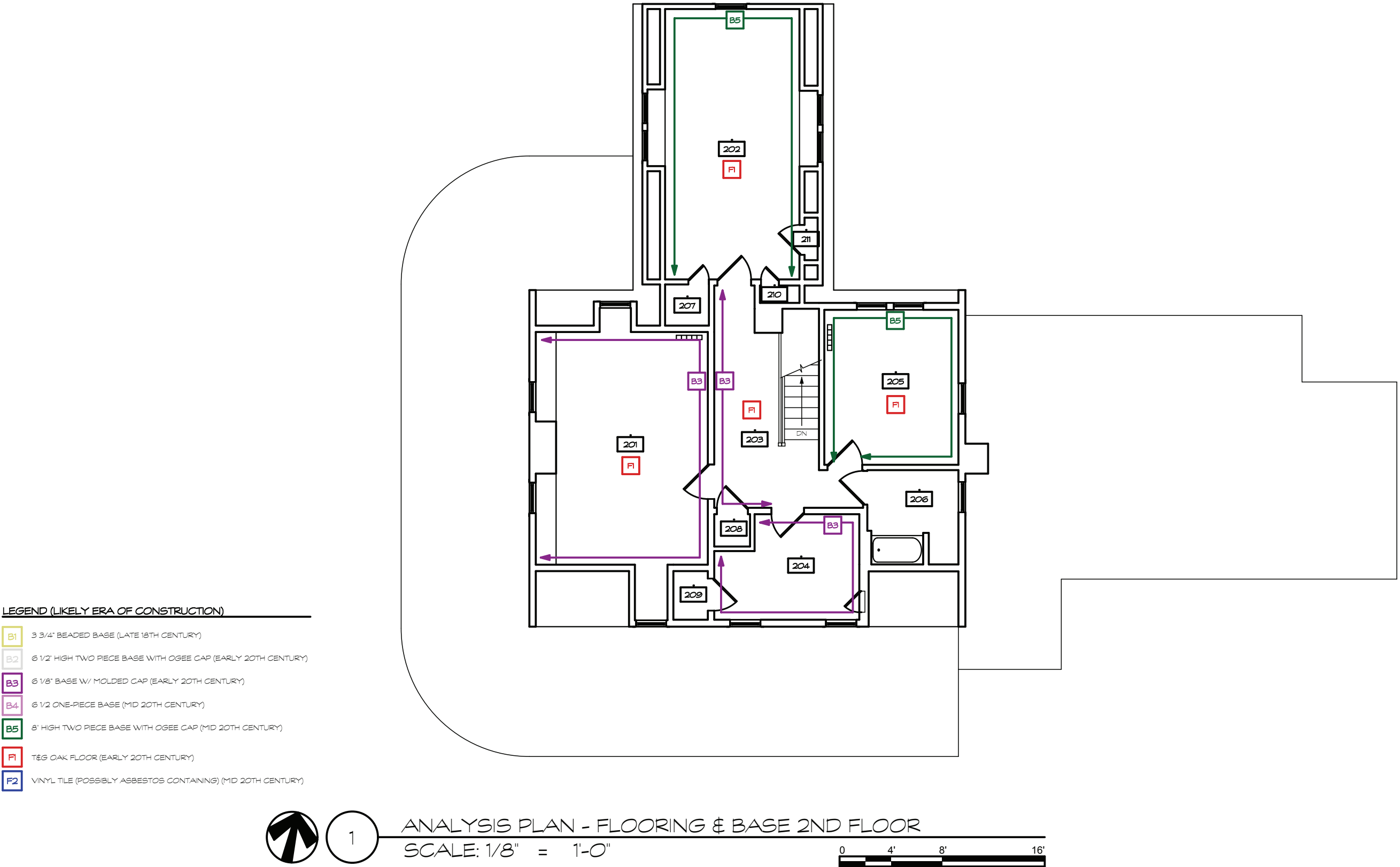
C. Existing Conditions/Historic Analysis Floor Plans *continued*



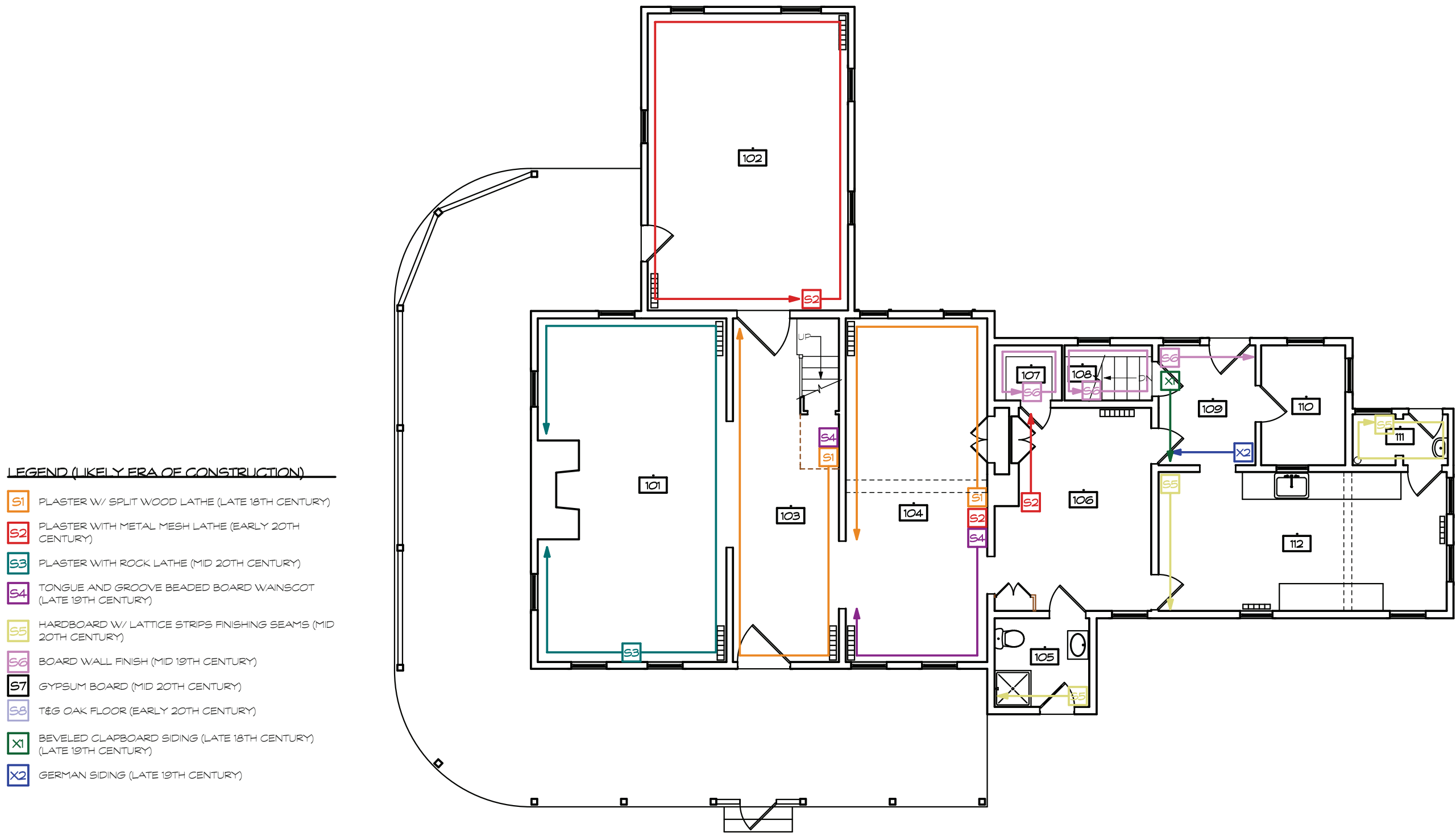
1 ANALYSIS PLAN - FLOORING & BASE 1ST FLOOR
SCALE: 1/8" = 1'-0"

0 4' 8' 16'

C. Existing Conditions/Historic Analysis Floor Plans *continued*



C. Existing Conditions/Historic Analysis Floor Plans *continued*



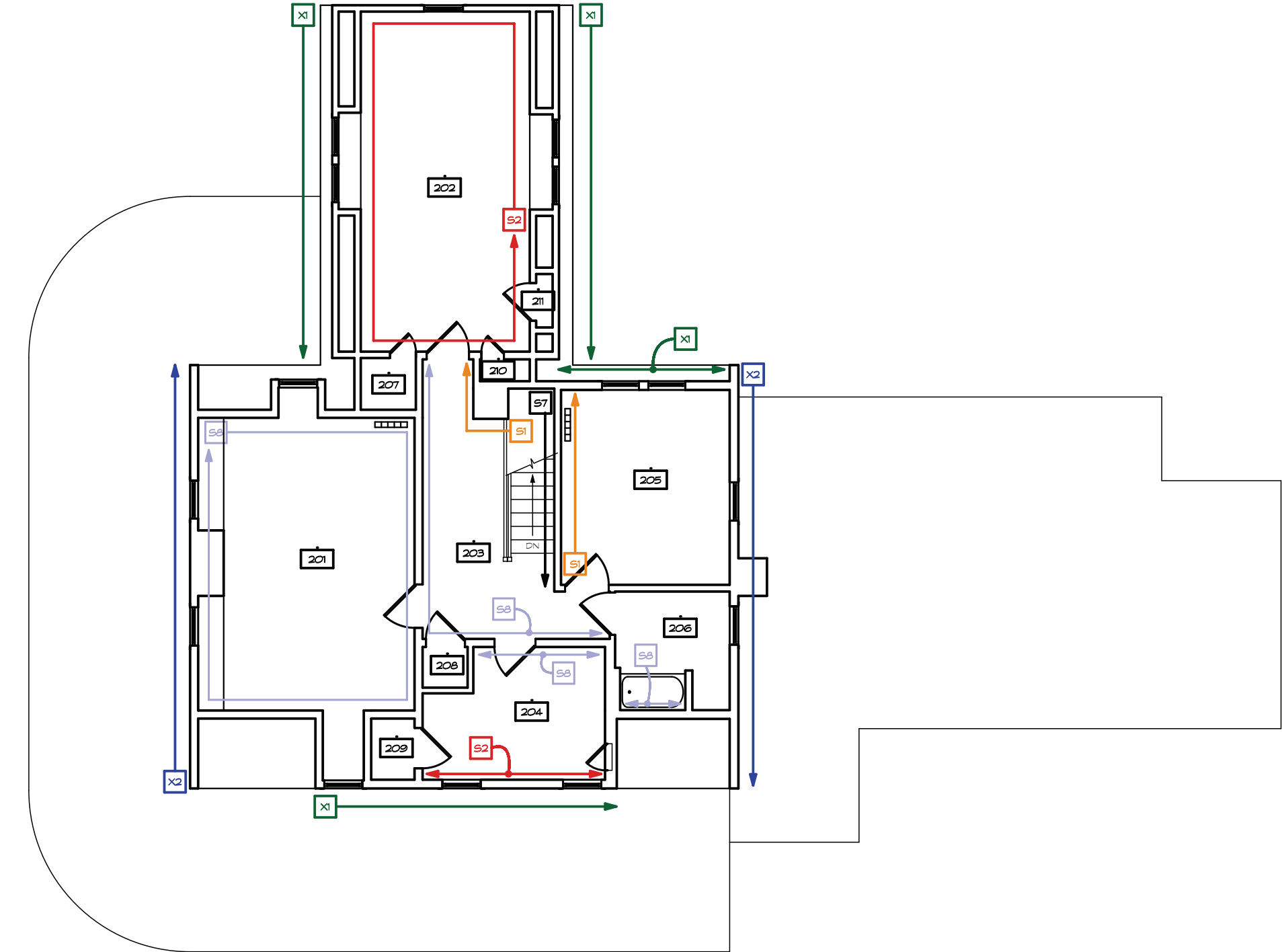
1 ANALYSIS PLAN - WALL FINISHES 1ST FLOOR
SCALE: 1/8" = 1'-0"



C. Existing Conditions/Historic Analysis Floor Plans *continued*

LEGEND (LIKELY ERA OF CONSTRUCTION)

- S1 PLASTER W/ SPLIT WOOD LATHE (LATE 18TH CENTURY)
- S2 PLASTER WITH METAL MESH LATHE (EARLY 20TH CENTURY)
- S3 PLASTER WITH ROCK LATHE (MID 20TH CENTURY)
- S4 TONGUE AND GROOVE BEADED BOARD WAINSCOT (LATE 19TH CENTURY)
- S5 HARDBOARD W/ LATTICE STRIPS FINISHING SEAMS (MID 20TH CENTURY)
- S6 BOARD WALL FINISH (MID 19TH CENTURY)
- S7 GYPSUM BOARD (MID 20TH CENTURY)
- S8 T&G OAK FLOOR (EARLY 20TH CENTURY)
- X1 BEVELED CLAPBOARD SIDING (LATE 18TH CENTURY) (LATE 19TH CENTURY)
- X2 GERMAN SIDING (LATE 19TH CENTURY)



1

ANALYSIS PLAN - WALL FINISHES 2ND
SCALE: 1/8" = 1'-0"

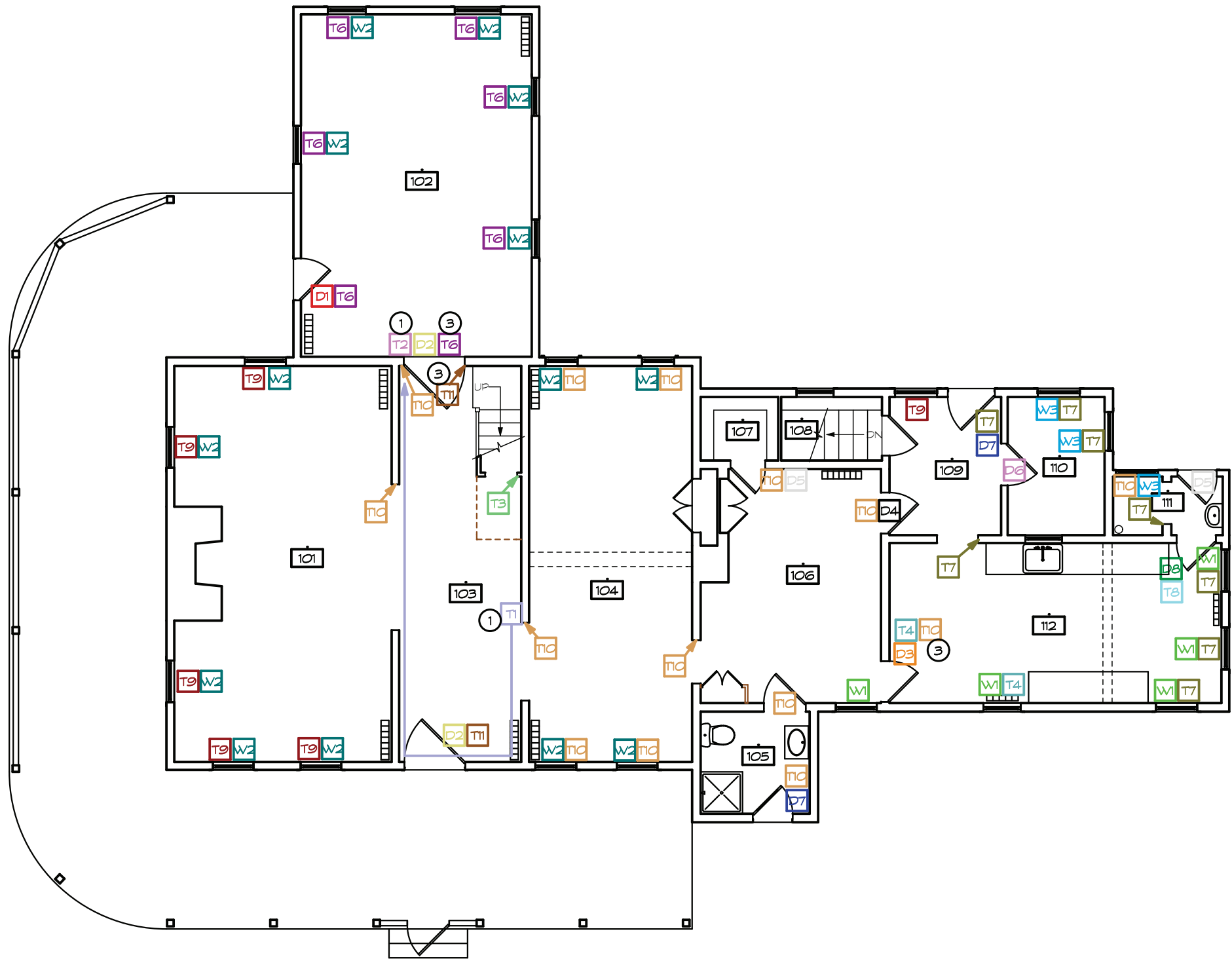


C. Existing Conditions/Historic Analysis Floor Plans *continued*C.

LEGEND (LIKELY ERA OF CONSTRUCTION)

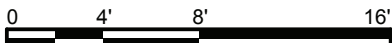
- W1 6/6 DOUBLE HUNG WINDOW
- W2 2/2 DOUBLE HUNG WINDOW (EARLY 20TH CENTURY)
- W3 6 PANE CASEMENT WINDOW (LATE 18TH CENTURY?)
- W4 6/6 DOUBLE HUNG WINDOW (ATYPICAL MUNTINS)
- D1 4 PANEL - DOOR (LATE 19TH CENTURY)
- D2 5 PANEL VETICAL/HORIZONTAL PANEL DOOR (EARLY 20TH CENTURY)
- D3 5 PANEL HORIZONTAL PANEL DOOR (EARLY 20TH CENTURY)
- D4 4 PANEL - GLASS IN TOP PANEL DOOR (LATE 19TH CENTURY)
- D5 10 PANEL GLASS PANE DOOR (MID 20TH CENTURY)
- D6 TWO PANEL DOOR (MID 20TH CENTURY)
- D7 6 PANE GLASS/HORIZONTAL LOWER PANEL DOOR (MID 20TH CENTURY)
- D8 1 PANEL DOOR (MID 20TH CENTURY)
- D9 BUILT UP BOARD DOORS (EARLY 20TH CENTURY)
- T1 3 1/2" BEADED CHAIR RAIL (LATE 18TH CENTURY)
- T2 4 1/8" BEAED CASING W/ BACKBAND (LATE 18TH CENTURY)
- T3 SMALL BULLNOSE CASING (LATE 18TH CENTURY)
- T4 3" MOLDED CASING (LATE 19TH CENTURY)
- T5 SMALL TRIM AT DORMER EDGES (LATE 18TH CENTURY)
- T6 4" FLAT CASING W/ ROUNDED EDGES, HEADER STOP, HEADER CAPITAL (MID 20TH CENTURY)
- T7 FLAT CASING W/ PROJECTING HEADER (MID 20TH CENTURY)
- T8 DOOR TRIM W/ TRANSOM
- T9 FLAT CASING MITRED W/ ROUNDED EDGE (MID 20TH CENTURY)
- nc FLAT CASING W/O PROJECTING HEADER (MID 20TH CENTURY)
- TI 4 7/8" MOLDED CASING (LATE 19TH CENTURY)

- 1 BEHIND LATER CONSTRUCTION
- 2 WAINSCOT HEIGHT
- 3 DIFFERENT TRIM ON OPPOSITE SIDES OF DOOR
- 4 TWO LAYERS OF LATHE PLUS WAINSCOT



1

ANALYSIS PLAN - DOOR & WINDOW TRIM 1ST FLOOR
SCALE: 1/8" = 1'-0"

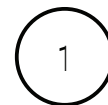
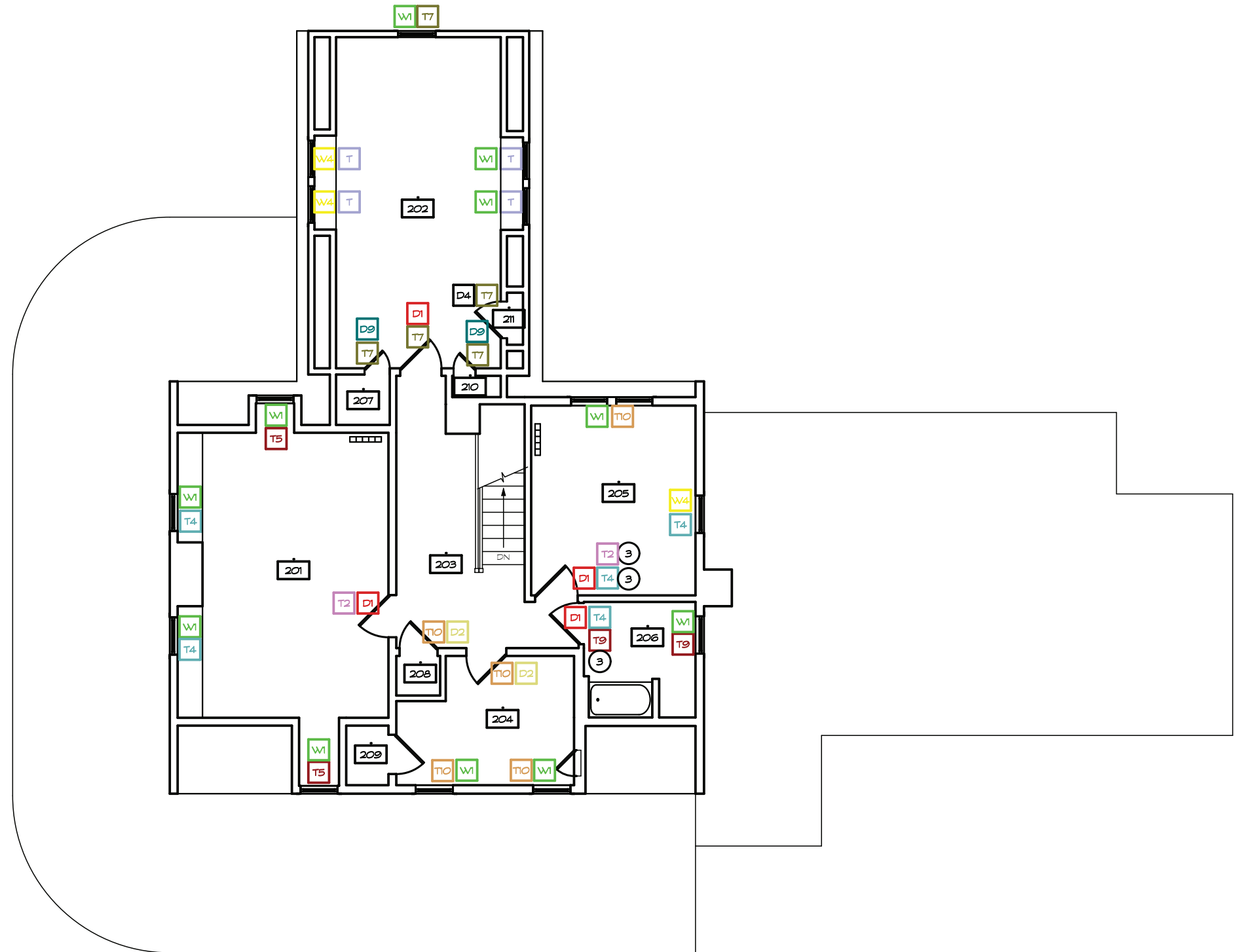


C. Existing Conditions/Historic Analysis Floor Plans *continued*

LEGEND (LIKELY ERA OF CONSTRUCTION)

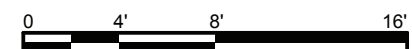
- W1 6/6 DOUBLE HUNG WINDOW
- W2 2/2 DOUBLE HUNG WINDOW (EARLY 20TH CENTURY)
- W3 6 PANE CASEMENT WINDOW (LATE 18TH CENTURY?)
- W4 6/6 DOUBLE HUNG WINDOW (ATYPICAL MUNTINS)
- D1 4 PANEL - DOOR (LATE 19TH CENTURY)
- D2 5 PANEL VETICAL/HORIZONTAL PANEL DOOR (EARLY 20TH CENTURY)
- D3 5 PANEL HORIZONTAL PANEL DOOR (EARLY 20TH CENTURY)
- D4 4 PANEL - GLASS IN TOP PANEL DOOR (LATE 19TH CENTURY)
- D5 10 PANEL GLASS PANE DOOR (MID 20TH CENTURY)
- D6 TWO PANEL DOOR (MID 20TH CENTURY)
- D7 6 PANE GLASS/HORIZONTAL LOWER PANEL DOOR (MID 20TH CENTURY)
- D8 1 PANEL DOOR (MID 20TH CENTURY)
- D9 BUILT UP BOARD DOORS (EARLY 20TH CENTURY)
- T1 3 1/2" BEADED CHAIR RAIL (LATE 18TH CENTURY)
- T2 4 1/8" BEADED CASING W/ BACKBAND (LATE 18TH CENTURY)
- T3 SMALL BULLNOSE CASING (LATE 18TH CENTURY)
- T4 3" MOLDED CASING (LATE 19TH CENTURY)
- T5 SMALL TRIM AT DORMER EDGES (LATE 18TH CENTURY)
- T6 4" FLAT CASING W/ ROUNDED EDGES, HEADER STOP, HEADER CAPITAL (MID 20TH CENTURY)
- T7 FLAT CASING W/ PROJECTING HEADER (MID 20TH CENTURY)
- T8 DOOR TRIM W/ TRANSOM
- T9 FLAT CASING MITRED W/ ROUNDED EDGE (MID 20TH CENTURY)
- T10 FLAT CASING W/O PROJECTING HEADER (MID 20TH CENTURY)
- T11 4 7/8" MOLDED CASING (LATE 19TH CENTURY)

- 1 BEHIND LATER CONSTRUCTION
- 2 WAINSCOT HEIGHT
- 3 DIFFERENT TRIM ON OPPOSITE SIDES OF DOOR
- 4 TWO LAYERS OF LATHE PLUS WAINSCOT



ANALYSIS PLAN - DOOR & WINDOW TRIM 2ND FLOOR

SCALE: 1/8" = 1'-0"



D. Existing Conditions Elevations



D. Existing Conditions Elevations *continued*



1

SOUTH ELEVATION
SCALE: 1/8" = 1'-0"



Note: Screen door in front of entrance door not shown for clarity.

D. Existing Conditions Elevations *continued*

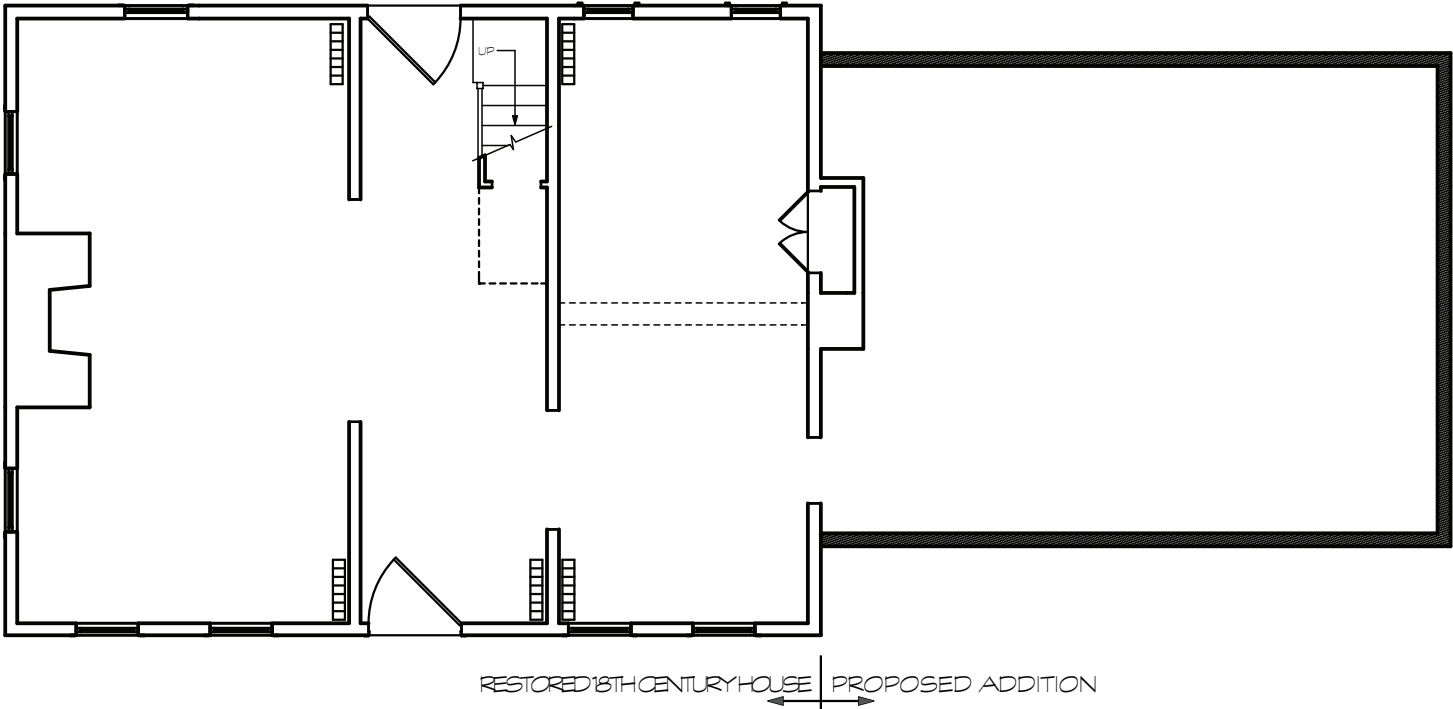


D. Existing Conditions Elevations *continued*



1 WEST ELEVATION
SCALE: 1/8" = 1'-0" 0 4' 8' 16'

E. Design Options - Drawings



NOTE: INTERIOR OF 18TH CENTURY HOUSE TO BE FURTHER DEVELOPED AFTER ADDITIONAL HISTORIC RESEARCH.

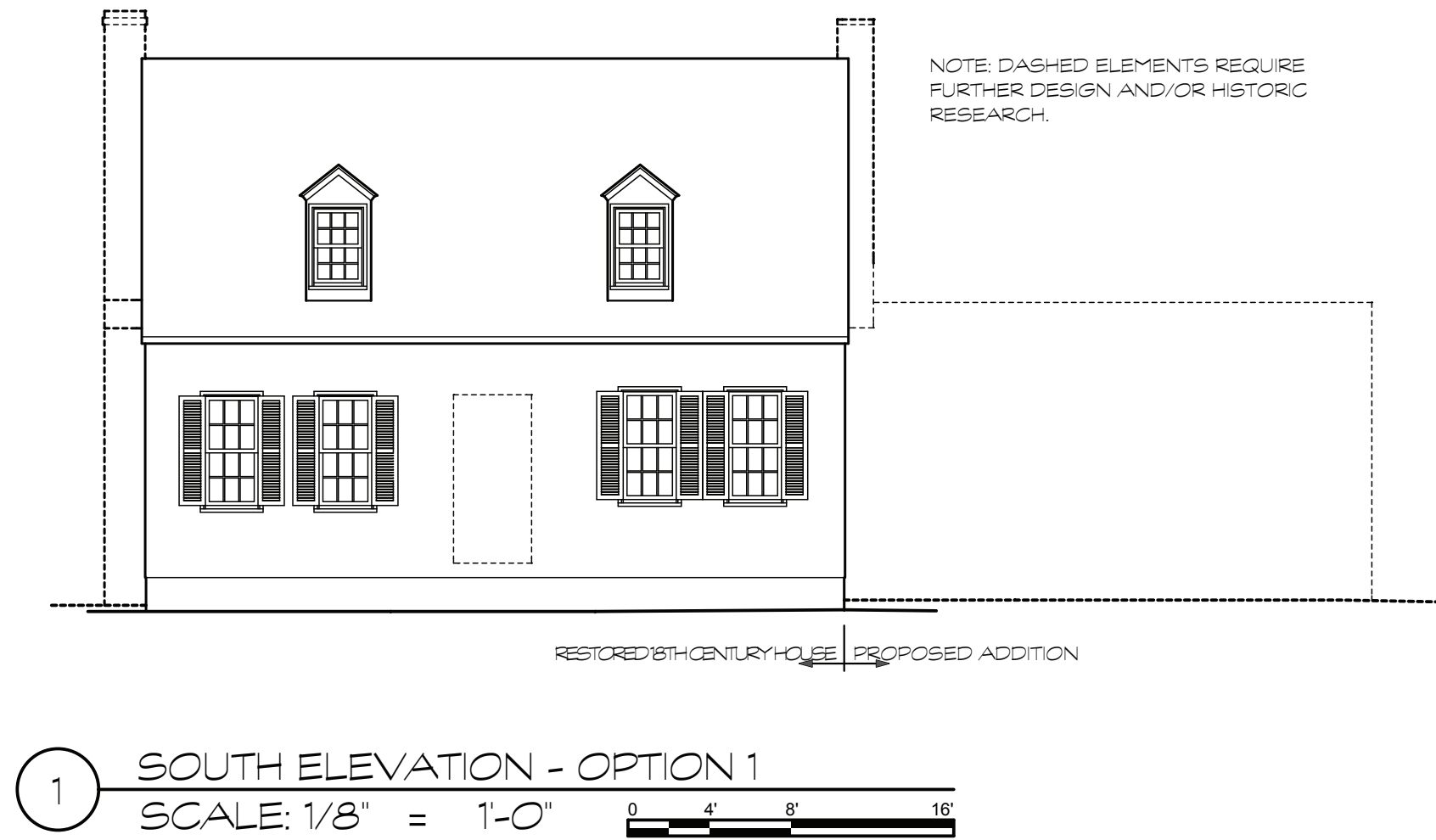
PROPOSED USE: HOUSE MUSEUM WITH PUBLIC FACILITIES IN ADDITION.

- SAMPLE BUILDING PROGRAM:
- 1. EXHIBITS RELATED TO HISTORY OF SITE & BUILDING
 - 2. HANDICAP RESTROOM FACILITIES.

1 FLOOR PLAN - OPTION 1
SCALE: 1/8" = 1'-0" 0 4' 8' 16'

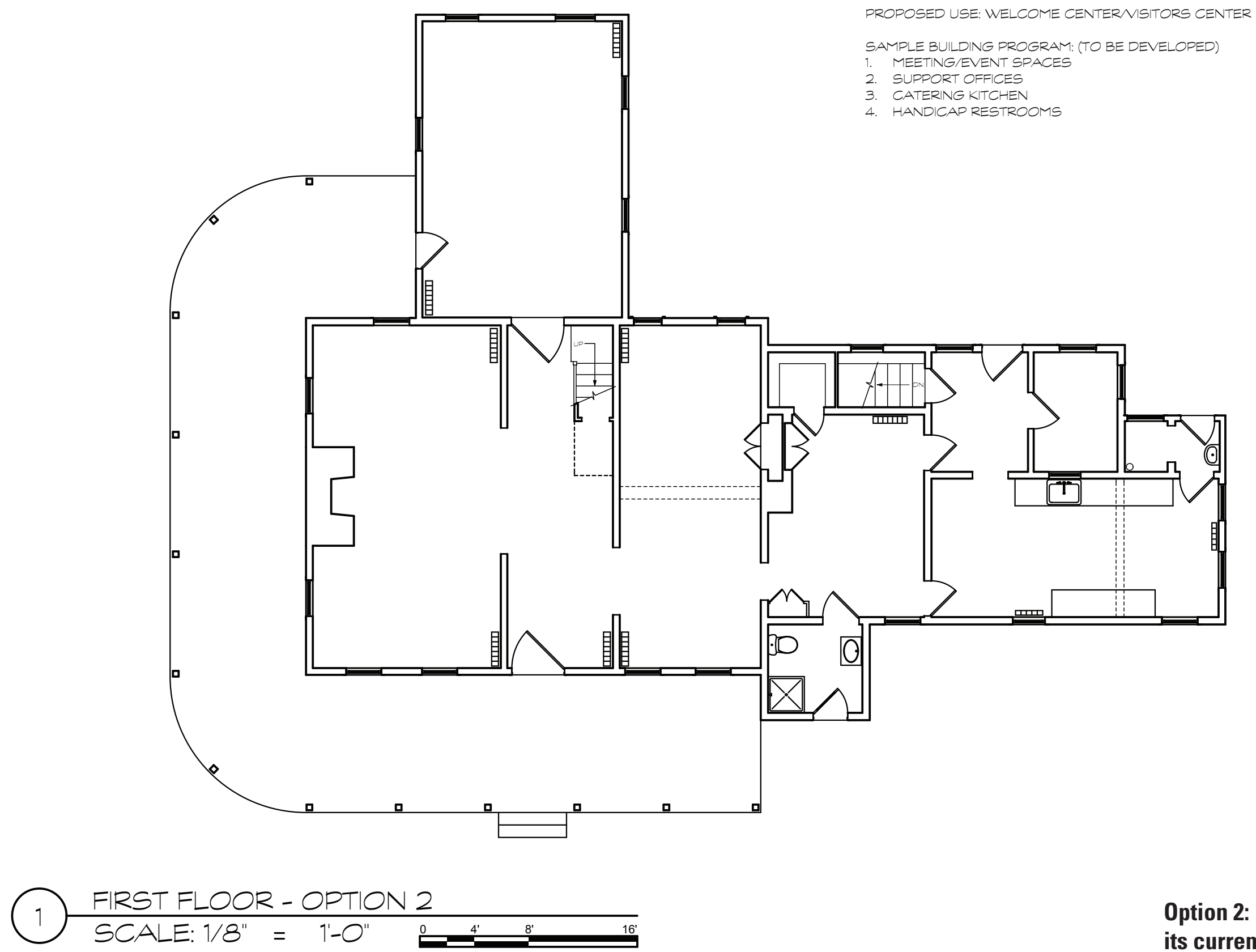
Option 1: Restoration of the original 18th Century house with new contemporary compatible addition.

E. Design Options - Drawings *continued*



Option 1: Restoration of the original 18th Century house with new contemporary compatible addition.

E. Design Options - Drawings *continued*



Option 2: Rehabilitation of house in its current configuration.

E. Design Options - Drawings *continued*

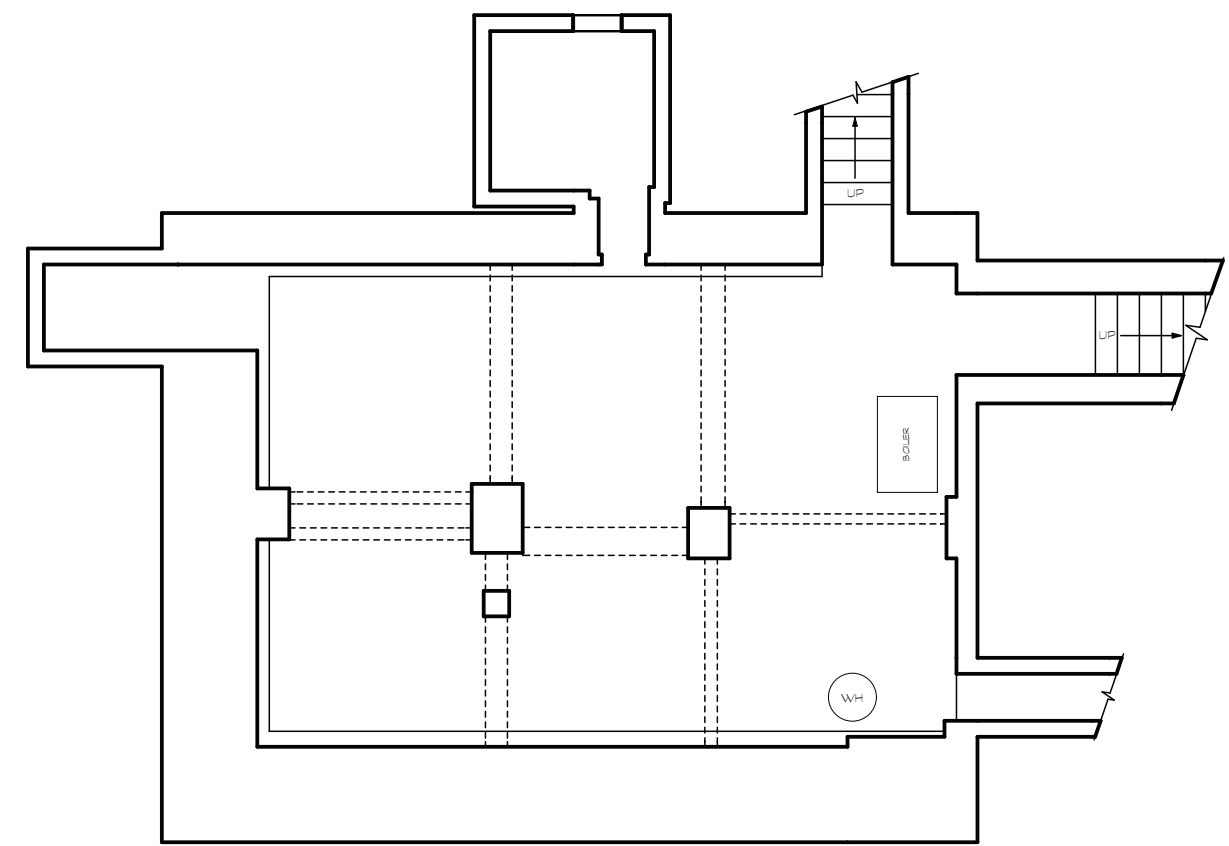


1 SOUTH ELEVATION - OPTION 2
SCALE: 1/8" = 1'-0" 0 4' 8' 16'

Option 2: Rehabilitation of house in its current configuration.

E. Design Options - Drawings *continued*

NOTE: STABILIZE FOUNDATION AND MAKE IMPROVEMENTS AS NEEDED FOR SAFETY AND SECURITY. ADD INTERPRETIVE SIGNAGE WITH HISTORICAL INFORMATION ABOUT THE BUILDING.



1 BASEMENT PLAN - OPTION 3
SCALE: 1/8" = 1'-0" 0 4' 8' 16'

Option 3: Selective demolition to foundation. Preserve foundations and interpretive treatment plan.