

# Planning Geography

## Fairfax County, Virginia

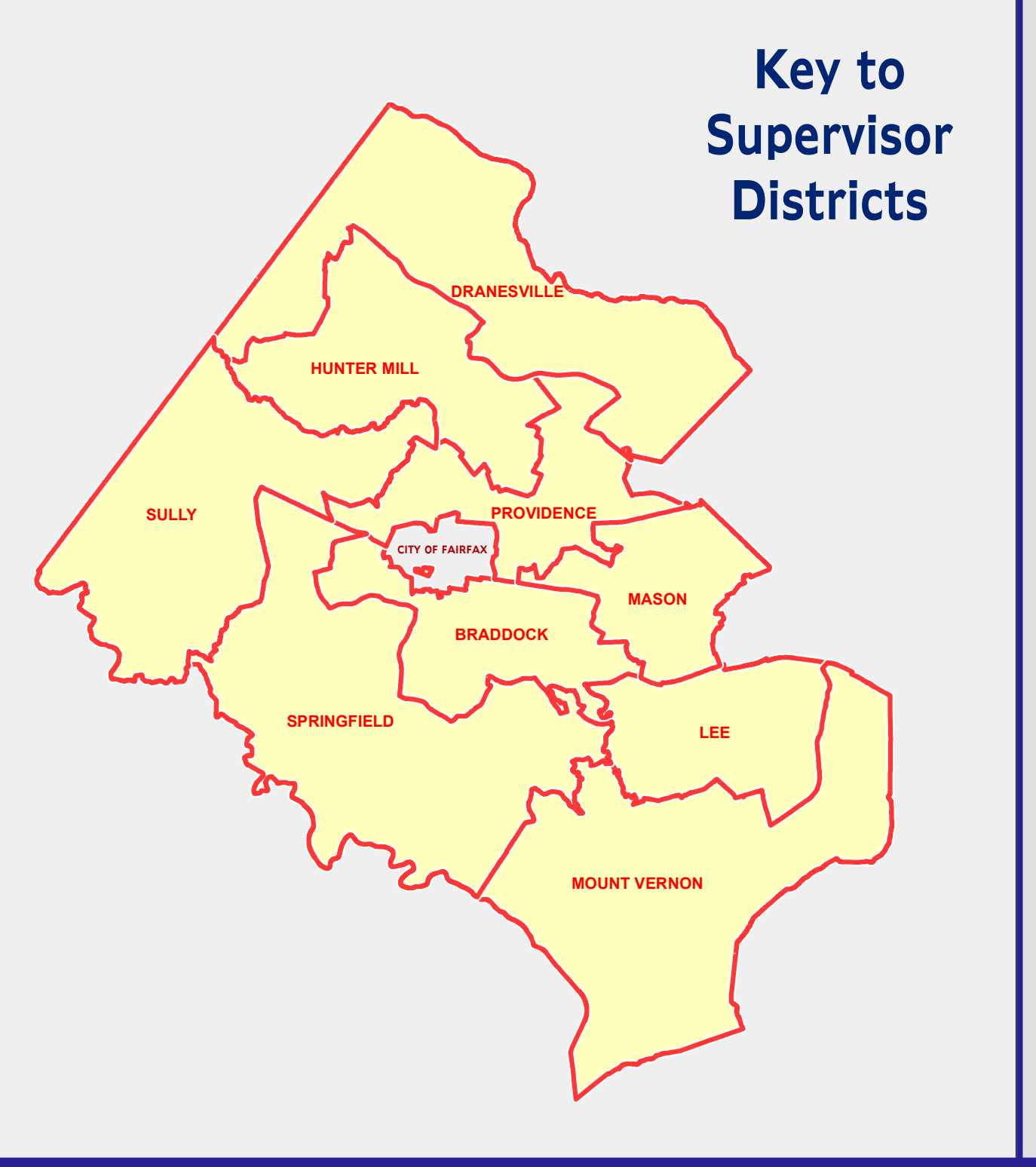
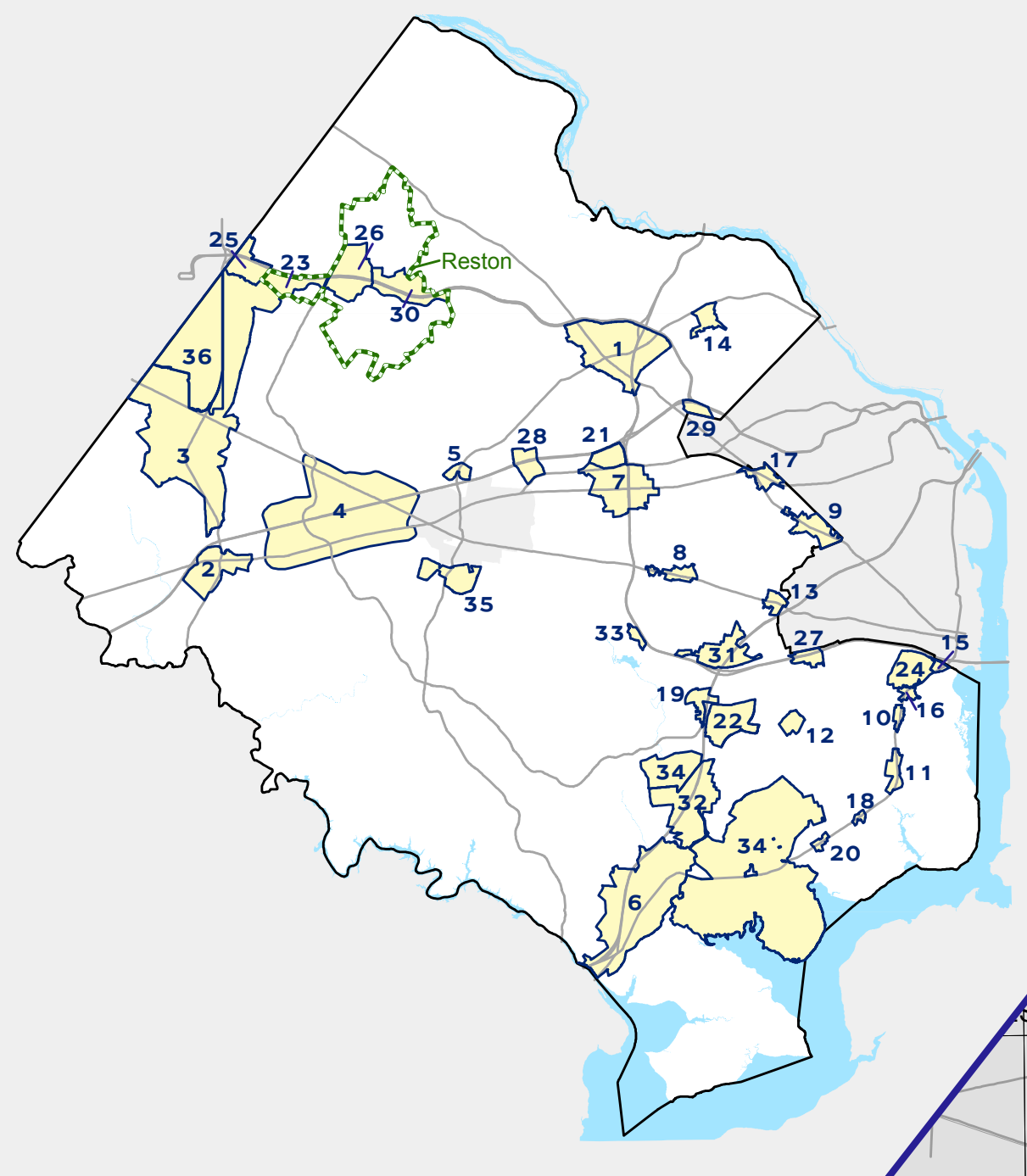
### 2018

Prepared by the Fairfax County  
Department of Planning & Zoning

This publication represents the Plan as amended through  
March 6, 2018 and reflects Plan Amendment 2017-07  
(2017-L-1(B)) and all previous amendments.

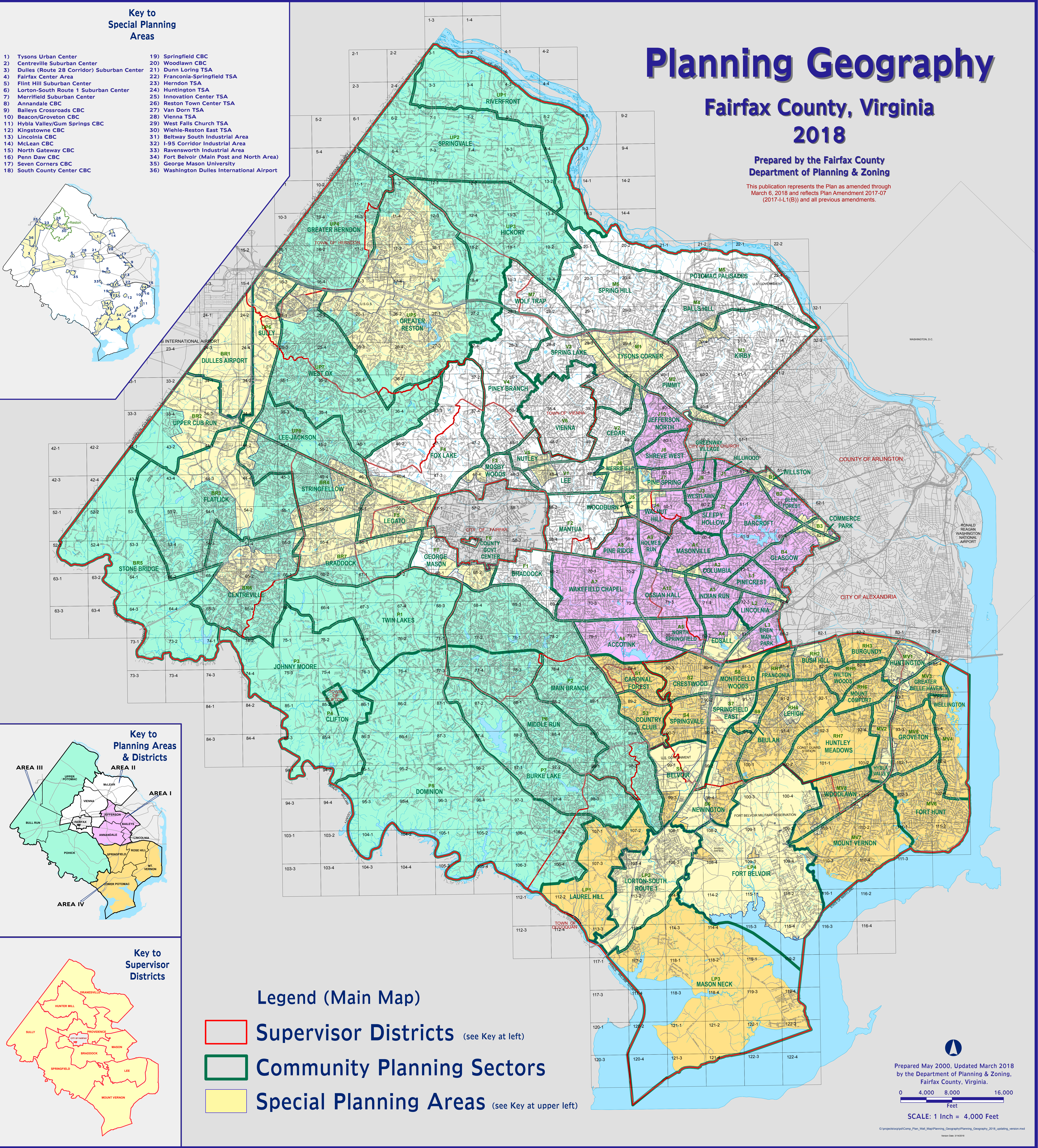
#### Key to Special Planning Areas

- |   |   |
|---|---|
| 1) Tysons Urban Center                        | 19) Springfield CBC                         |
| 2) Centreville Suburban Center                | 20) Woodlawn CBC                            |
| 3) Dulles (Route 28 Corridor) Suburban Center | 21) Dunn Loring TSA                         |
| 4) Fairfax Center Area                        | 22) Franconia-Springfield TSA               |
| 5) Flint Hill Suburban Center                 | 23) Herndon TSA                             |
| 6) Lorton-South Route 1 Suburban Center       | 24) Huntington TSA                          |
| 7) Merrifield Suburban Center                 | 25) Innovation Center TSA                   |
| 8) Annandale CBC                              | 26) Reston Town Center TSA                  |
| 9) Baileys Crossroads CBC                     | 27) Van Dorn TSA                            |
| 10) Beacon/Groveton CBC                       | 28) Vienna TSA                              |
| 11) Hybla Valley/Gum Springs CBC              | 29) West Falls Church TSA                   |
| 12) Kingstowne CBC                            | 30) Wiehle-Reston East TSA                  |
| 13) Lincolnia CBC                             | 31) Beltway South Industrial Area           |
| 14) McLean CBC                                | 32) I-95 Corridor Industrial Area           |
| 15) North Gateway CBC                         | 33) Ravensworth Industrial Area             |
| 16) Penn Daw CBC                              | 34) Fort Belvoir (Main Post and North Area) |
| 17) Seven Corners CBC                         | 35) George Mason University                 |
| 18) South County Center CBC                   | 36) Washington Dulles International Airport |

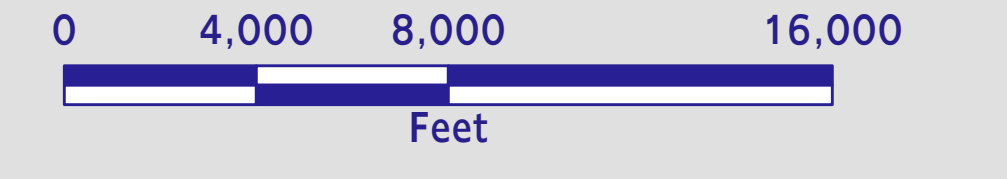


#### Legend (Main Map)

- Supervisor Districts (see Key at left)
- Community Planning Sectors
- Special Planning Areas (see Key at upper left)



Prepared May 2000, Updated March 2018  
by the Department of Planning & Zoning,  
Fairfax County, Virginia.



G:\projects\topopl\Comp\_Plan\_Map\Planning\_Geography\Planning\_Geography\_2018\_updates\_version.mxd  
Version Date: 3/14/2018