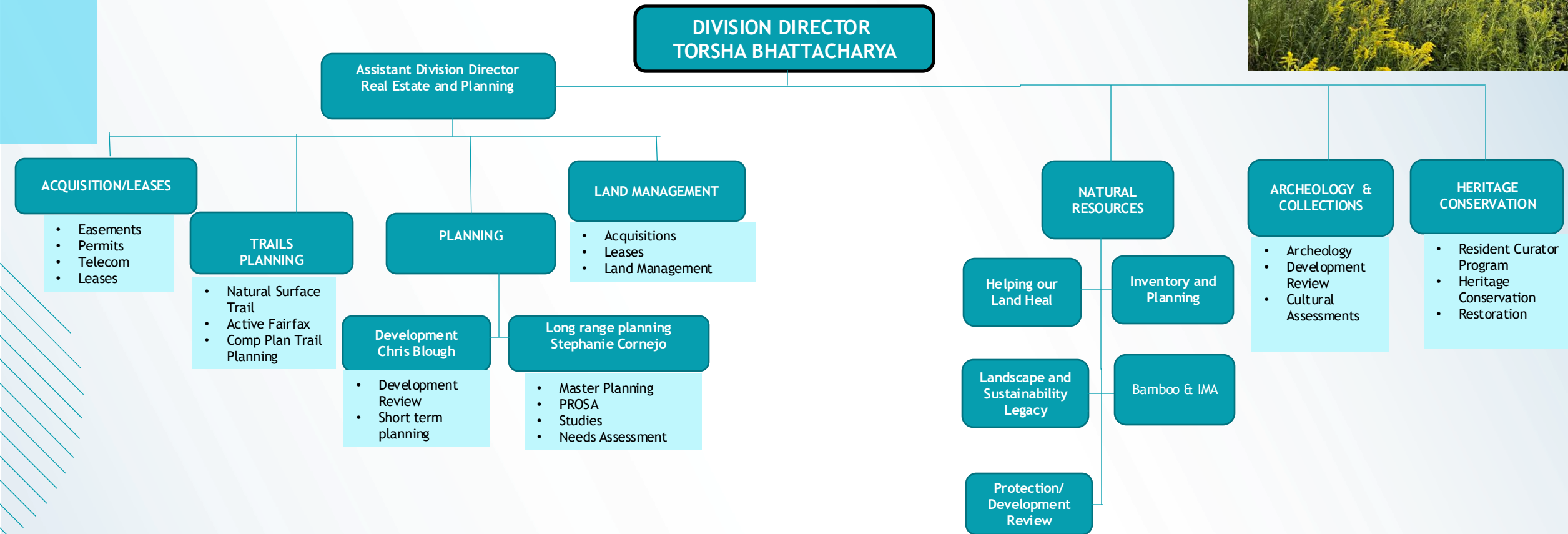


Fairfax County Planning Commission Parks Committee Thursday, November 21, 2024



Comp Plan Phase 1
FCPA updates

Stewardship and Planning Division



Policy Plan Amendment

Parks and Recreation



Fairfax County's park system plays a vital role in shaping the landscape and quality of life for county residents. Parks and recreation policies focus on the provision of parks and rec facilities and services, natural and cultural resource conservation and management, ensuring that parks and recreation are considered in urban growth development processes, and fostering equity and inclusion so that all county residents and visitors can benefit from the park system.



Updates to the Parks and Recreation element will be accomplished in two phases, including but not limited to the following topic areas:

- **Phase 1: Incorporating the Parks, Recreation, Open Space, and Access (PROSA) Strategy into relevant plan sections and policies**
- Phase 2: Updates to level of service standards, park classifications, urban parks policies and guidelines, resource management



Policy Plan Amendment

Parks and Recreation

- Need for the update: recent and upcoming changes
 - Park System Master Plan
 - Countywide Strategic Plan
 - Needs Assessment
 - Parks Recreation Open Space and Access (PROSA) Strategy
 - Natural Resource Management Plan
 - Cultural Resource Management Plan
- Equity
- Service delivery
- Resource Protection/Management
 - Environmental
 - Heritage
- Healthy communities
- Walkability to parks/trail strategy



Policy Plan Amendment -PROSA

Parks and Recreation



Parks, Recreation, Open Space, and Access (PROSA) Strategy

The PROSA Strategy is a data-driven approach to help achieve equitable park access countywide. It is intended to be a high-level approach to identify and prioritize areas for park investments and improvements.



Improve 10-minute walk access to FCPA Parks



Enrich habitat connectivity between environmental corridors



Enhance access to complete park experiences



Analyze and prioritize recreation needs and projects with an equity lens

2026 Bond Strategy

PROSA in action

PROSA will inform the 2026 bond and advance County Strategic Plan priorities:

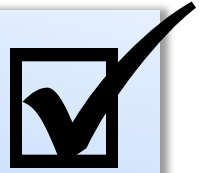
- **Analyze and prioritize** projects that serve the PROSA equity lens.
- **Prioritize** sites that improve walk access to parks.
- **Enhance** park experiences to provide a balance of recreational experiences to all residents.
- **Improve** tree canopy and habitat quality at park sites.



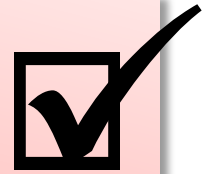
Serve PAREI opportunity areas and high and very high population density areas



Improve 10-minute walk access to FCPA parks



Enhance access to complete park experiences

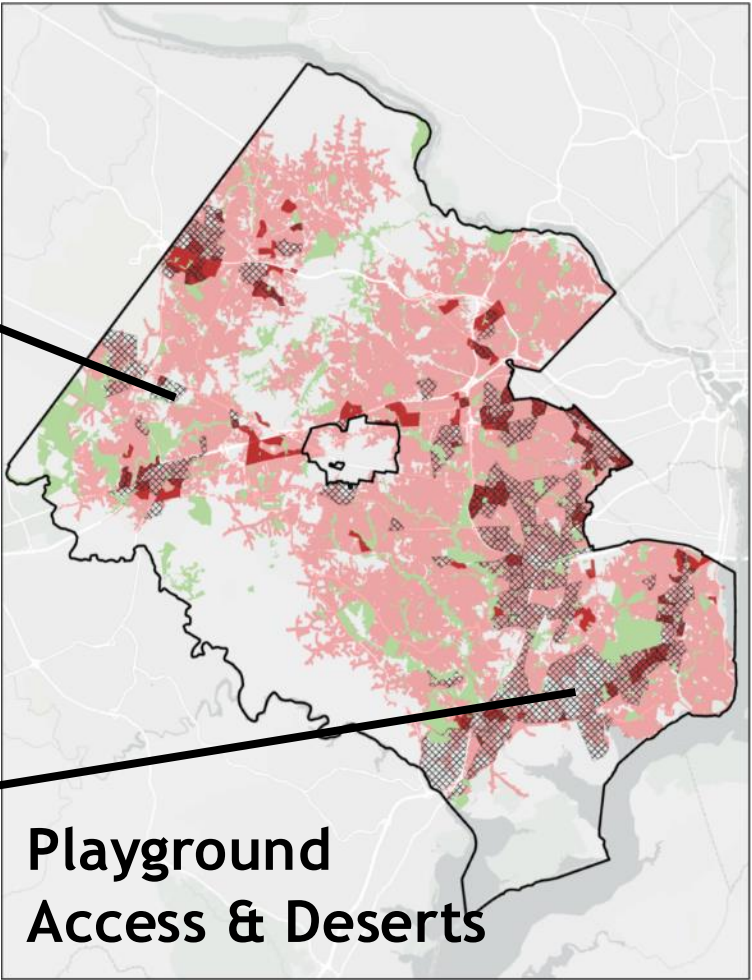
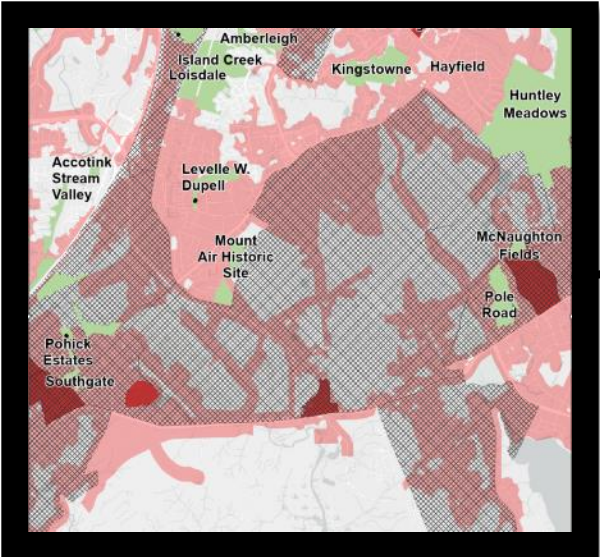
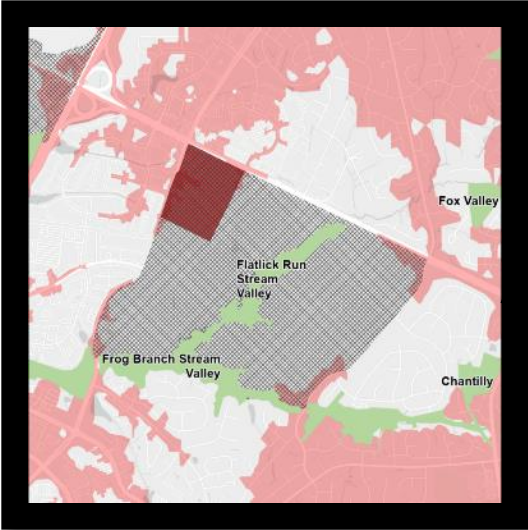


Enrich habitat connectivity between environmental corridors







Identifying Playground Deserts/Needs

PROSA in action

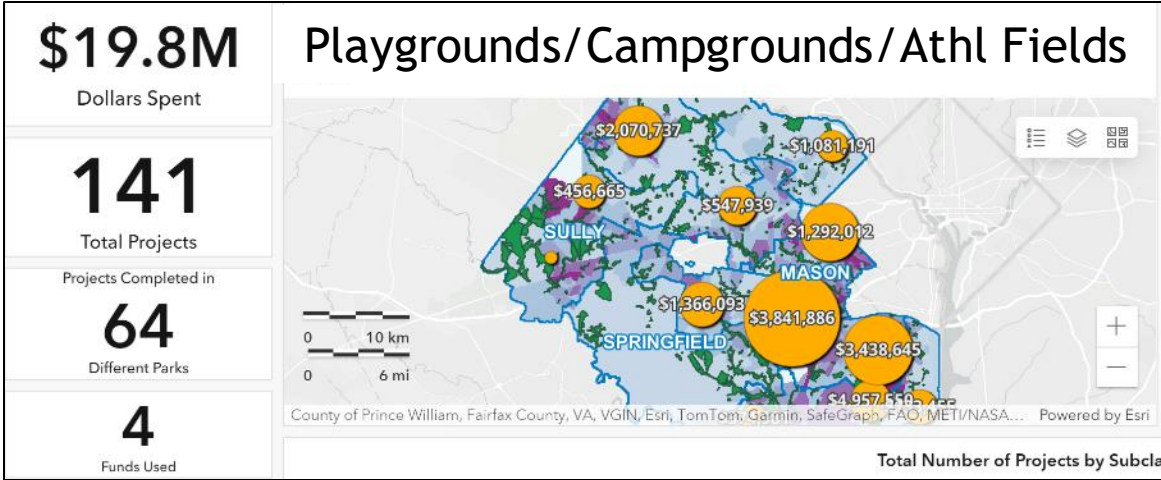
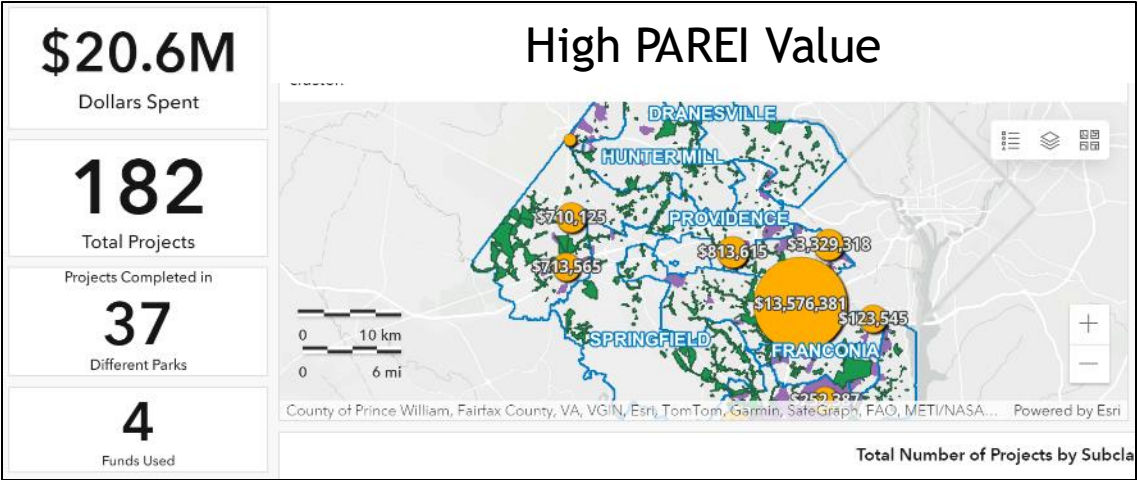
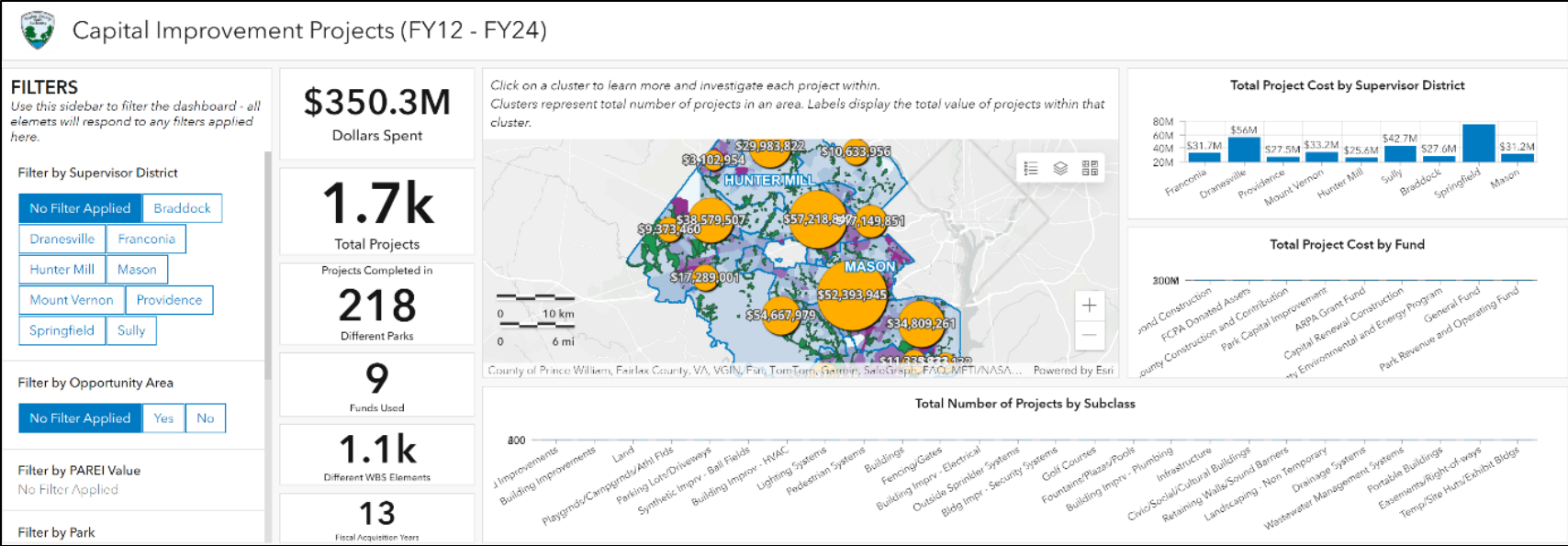


Legend

-  FCPA Parks
-  Opportunity Areas
-  High & Very High Population
-  Density 5-minute driveshed to playgrounds

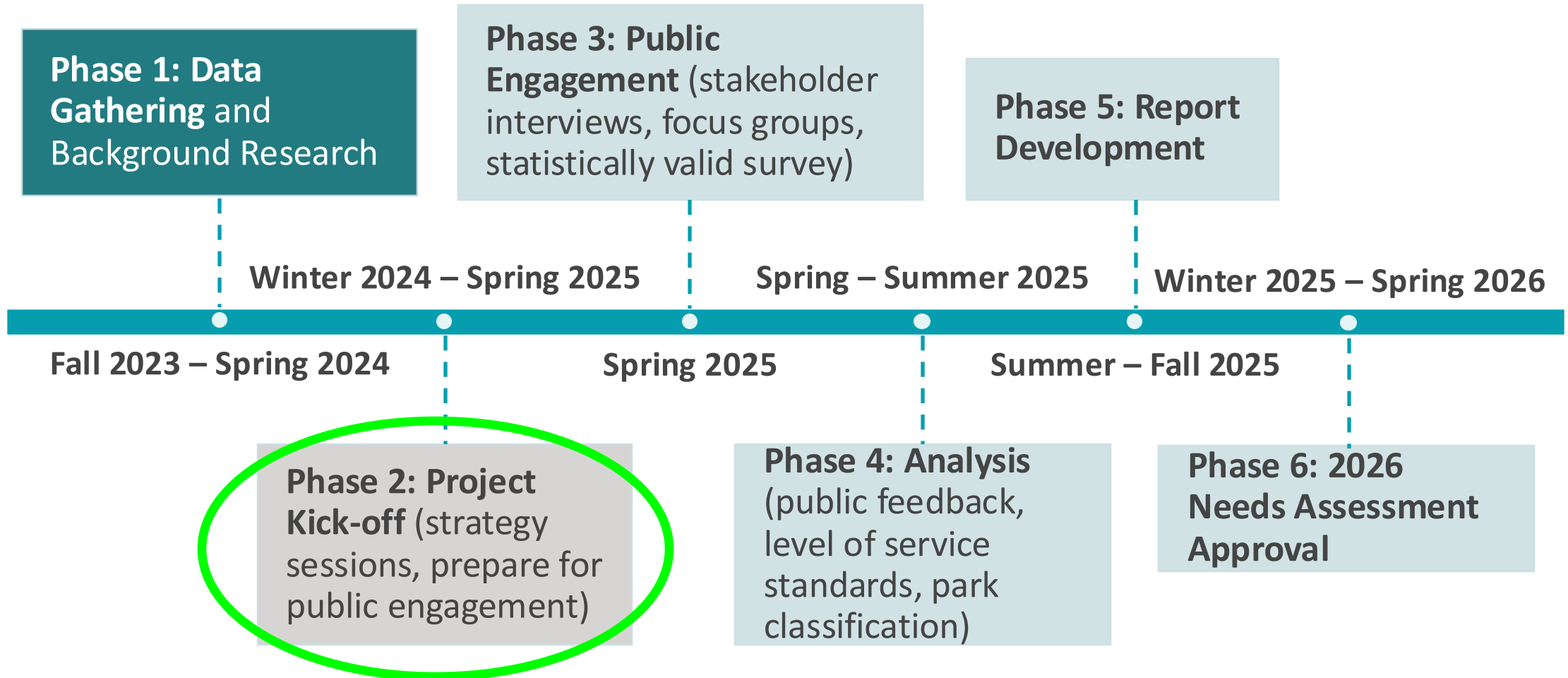
CIP Investment Mapping Tool

PROSA in action



Needs Assessment

2026-2031



Questions?

