

FCPD 2016 GROUP A OFFENSES

Crime Against Persons are calculated based on the number of victims.

Crime Against Property and Crimes Against Society are calculated based on the number of events.

**The 2016 population used to calculate the Crime Rate is 1,131,886. The source is the Fairfax County Department of Neighborhood and Community Services.*

The CY2016 IBR categories which cover all types of reported crimes are:

Crimes Against Persons (**increased 3.20%** from CY2015)

Crimes Against Property (**increased 1.58%** from CY2015)

Crimes Against Society (**increased 20.92%** from CY2015)

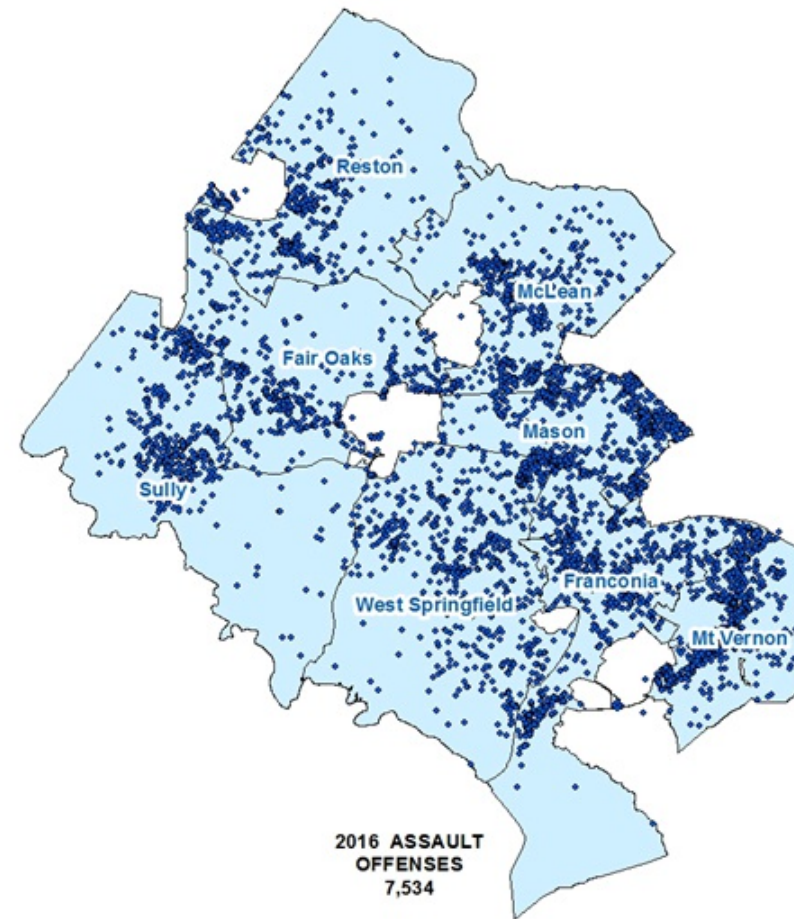
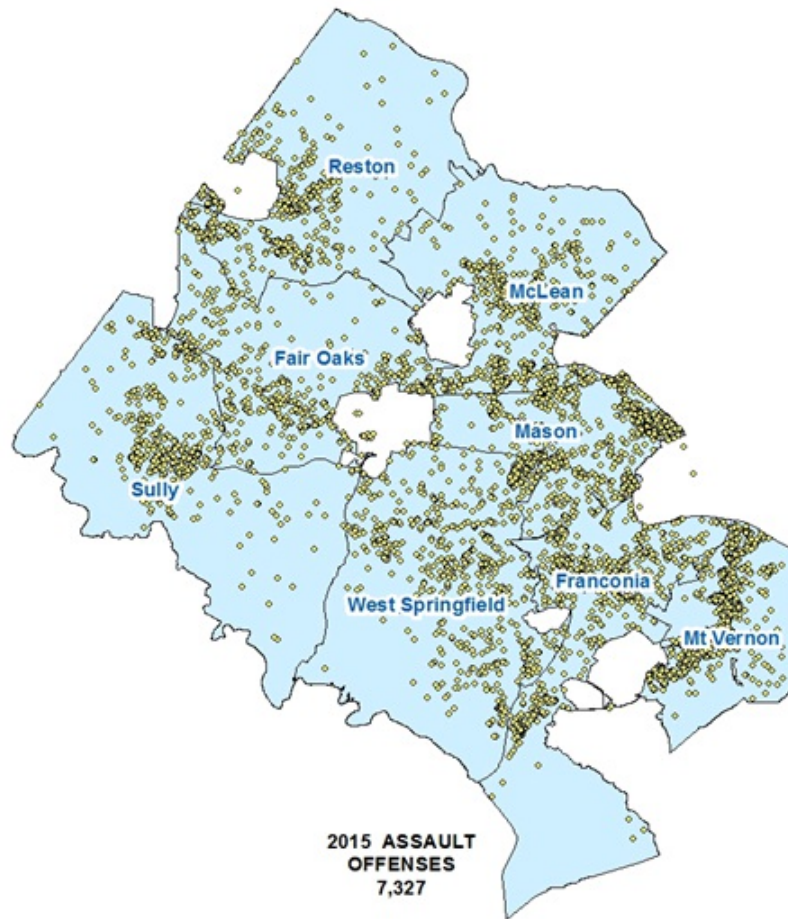
Overall Group A Crime saw an **increase of 2.03% in CY2016** compared to CY2015.

Crimes Against Persons	2015	2016	Difference	% Change	2016 Crime Rate (per 100,000)*
Assault Offenses	7,327	7,534	207	2.83	665.61
Homicide Offenses	13	19	6	46.15	1.68
Kidnapping/Abduction	119	116	-3	-2.52	10.25
Sex Offenses, Forcible	225	262	40	16.44	23.15
Sex Offenses, Non Forcible	3	2	-1	-33.33	0.18
TOTAL	7,687	7,933	246	3.20	700.87
Crimes Against Property	2015	2016	Difference	% Change	2016 Crime Rate (per 100,000)*
Arson	39	28	-11	-28.21	2.47
Bribery	5	1	-4	-80.00	0.09
Burglary/Breaking & Entering	831	830	-1	-0.12	73.33
Counterfeiting/Forgery	524	784	260	49.62	69.26
Destruction/Damage/Vandalism of Property	5,028	5,004	-24	-0.48	442.09
Embezzlement	286	269	-17	-5.94	23.77
Extortion/Blackmail	20	53	33	165.00	4.68
Fraud Offenses	4,030	4,469	439	10.89	394.83
Larceny/Theft Offenses	13,394	13,035	-359	-2.68	1,151.62
Motor Vehicle Theft	763	851	88	11.53	75.18
Robbery	451	461	10	2.22	40.73
Stolen Property Offenses	71	59	-12	-16.90	5.21
TOTAL	25,442	25,844	402	1.58	2,194.92
Crimes Against Society	2015	2016	Difference	% Change	2016 Crime Rate (per 100,000)*
Drug/Narcotic Offenses	4,708	5,718	1,010	21.45	505.17
Gambling Offenses	7	2	-5	-71.43	0.18
Pornography/Obscene Material	125	89	-36	-28.80	7.86
Prostitution Offenses	139	156	17	12.23	13.78
Weapon Law Violations	438	585	147	33.56	51.68
TOTAL	5,417	6,550	1,133	20.92	578.68
COMBINED IBR CATEGORIES	2015	2016	Difference	% Change	2016 Crime Rate (per 100,000)*
Aggregate Total of IBR Categories	38,546	39,327	781	2.03	3,474.47

NOTE: Statistics for the prior year may differ from recently published reports because of further validation of offense activity. Further validation may include: on-going investigations after reported incidents; status changes of initial offenses; and reclassification of offense titles from the initial date reported.



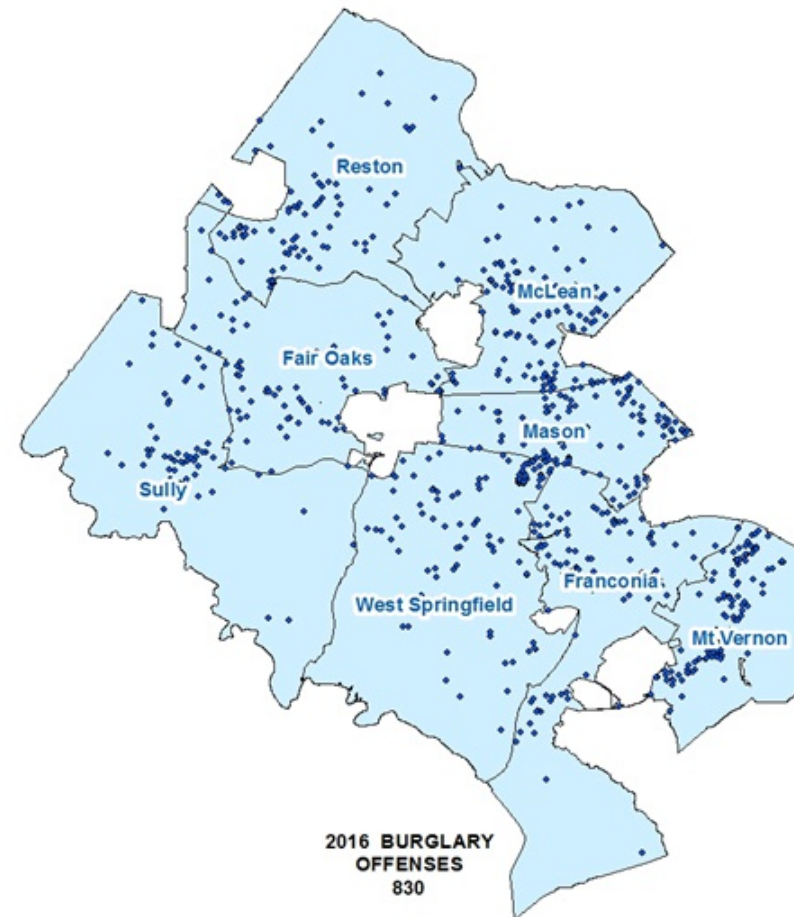
FCPD ASSAULT OFFENSES



NOTE: Statistics for CY2015 used in this report may differ from those published in 2015 reports. Additional cases were reclassified as they were under active on-going investigations after the CY2015 was published. This may include status changes to initial offenses and reclassification of offense titles from the initial date reported.



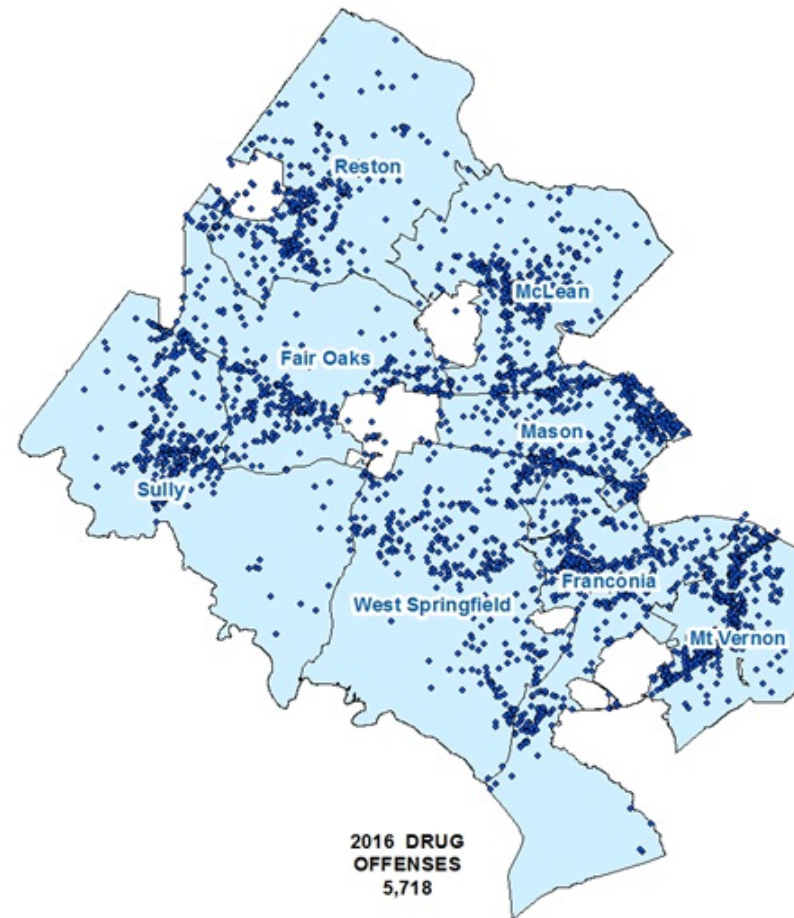
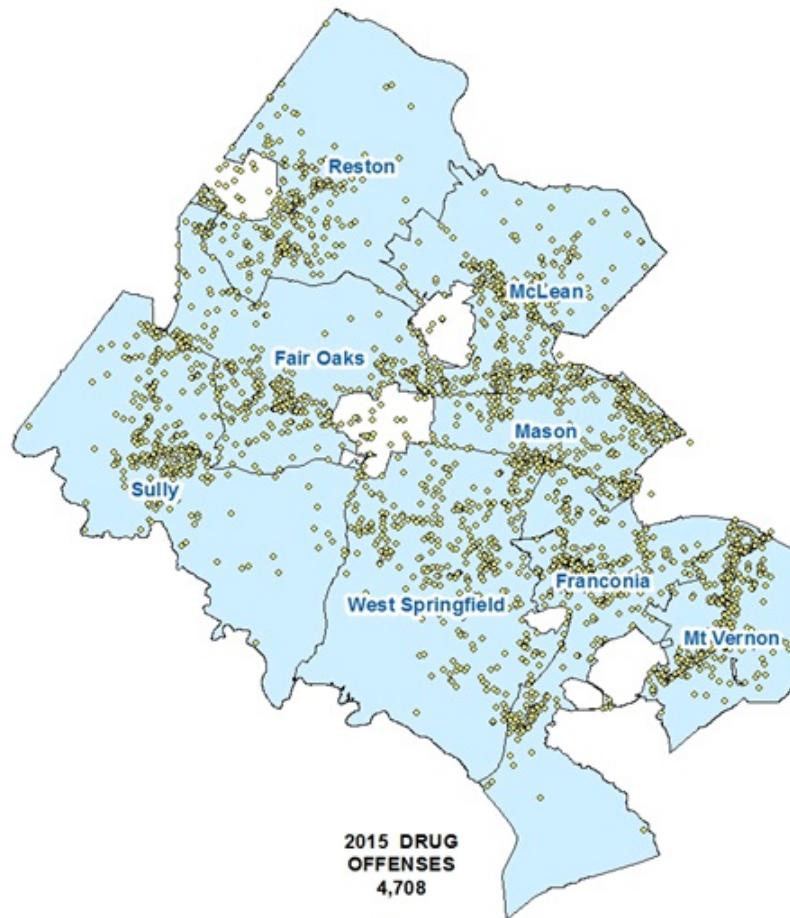
FCPD BURGLARY OFFENSES



NOTE: Statistics for CY2015 used in this report may differ from those published in 2015 reports. Additional cases were reclassified as they were under active on-going investigations after the CY2015 was published. This may include status changes to initial offenses and reclassification of offense titles from the initial date reported.



FCPD DRUG OFFENSES



NOTE: Statistics for CY2015 used in this report may differ from those published in 2015 reports. Additional cases were reclassified as they were under active on-going investigations after the CY2015 was published. This may include status changes to initial offenses and reclassification of offense titles from the initial date reported.



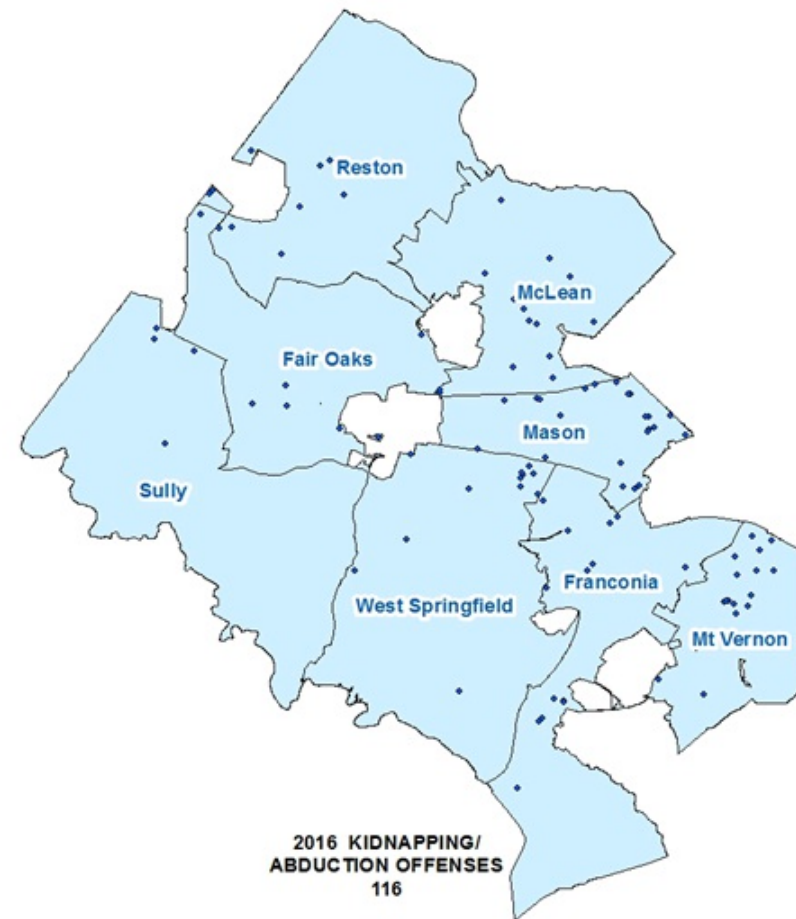
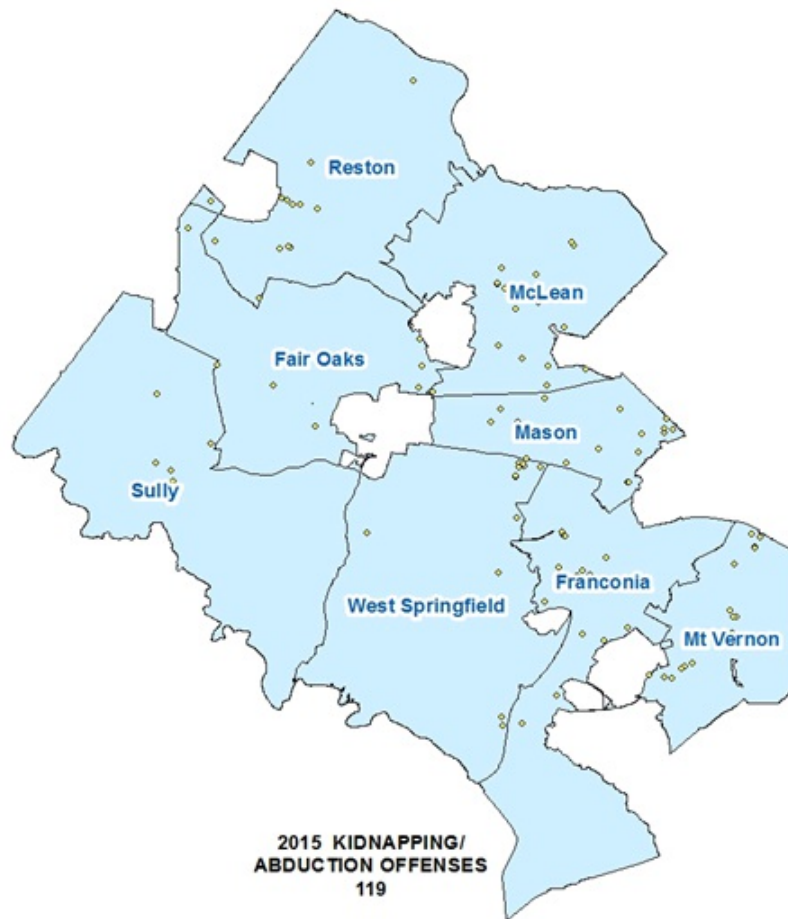
FCPD HOMICIDE OFFENSES



NOTE: Statistics for CY2015 used in this report may differ from those published in 2015 reports. Additional cases were reclassified as they were under active on-going investigations after the CY2015 was published. This may include status changes to initial offenses and reclassification of offense titles from the initial date reported.



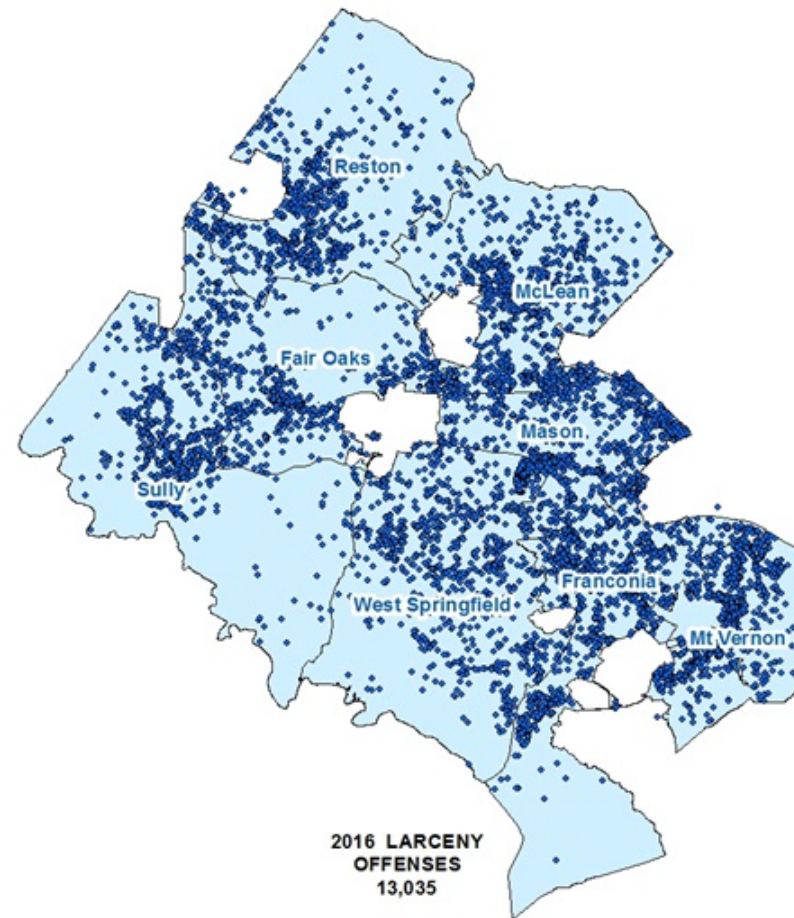
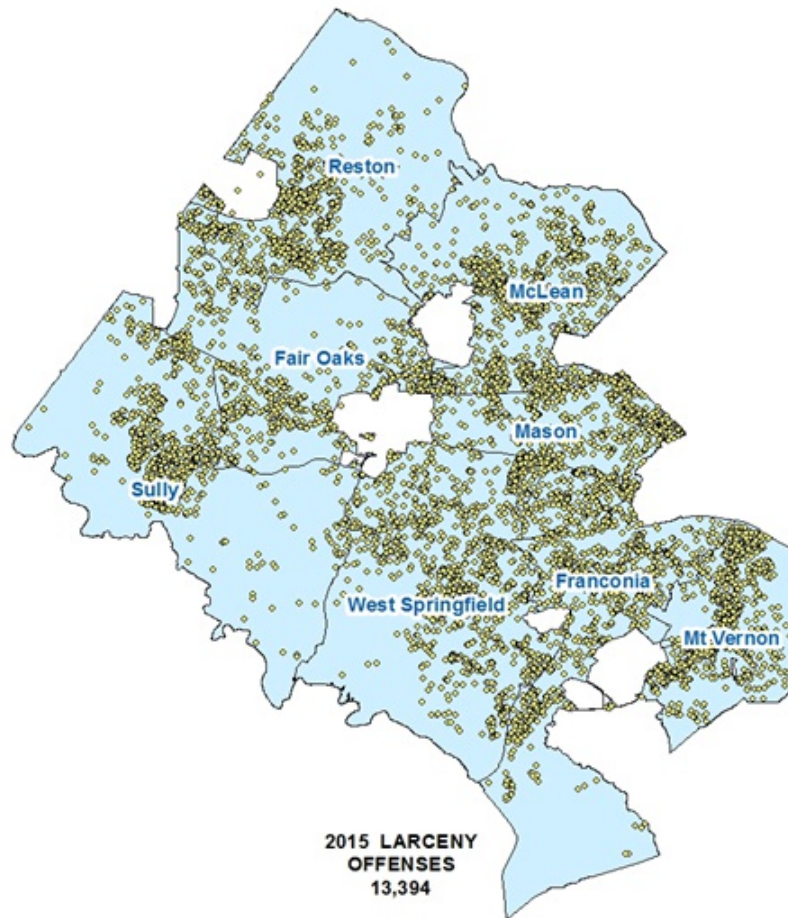
FCPD KIDNAPPING OFFENSES



NOTE: Statistics for CY2015 used in this report may differ from those published in 2015 reports. Additional cases were reclassified as they were under active on-going investigations after the CY2015 as published. This may include status changes to initial offenses and reclassification of offense titles from the initial date reported.



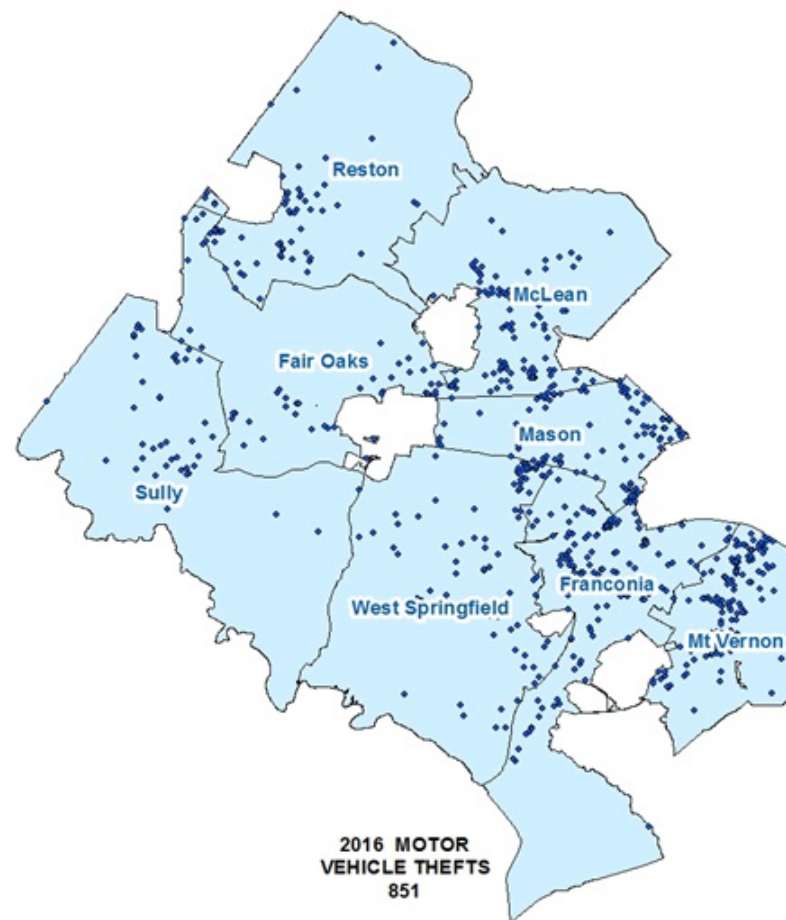
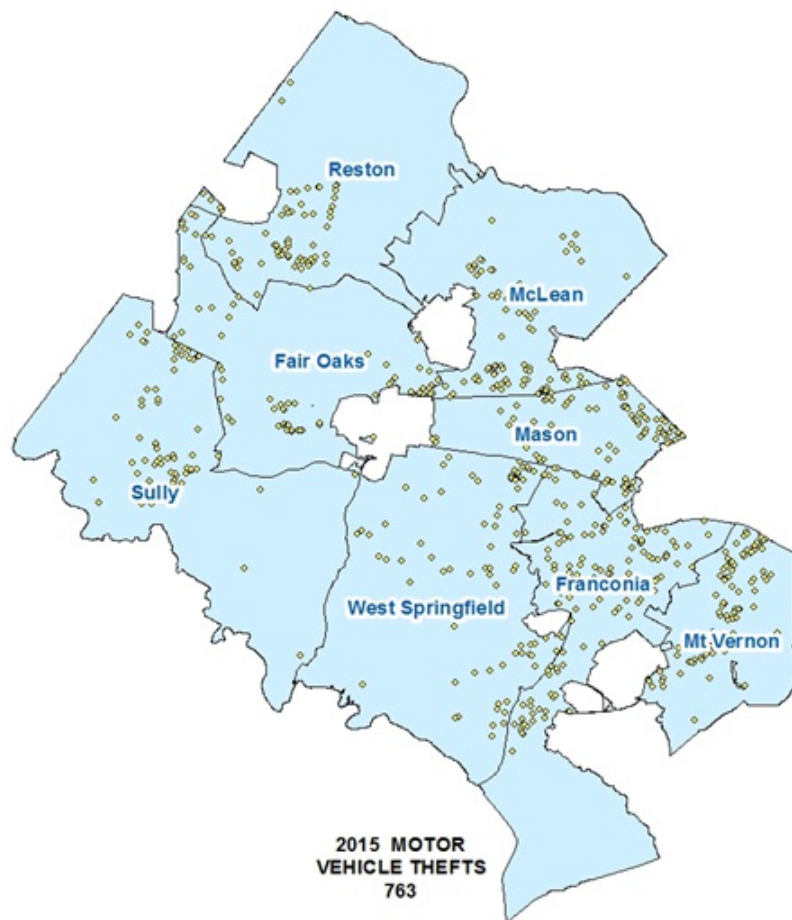
FCPD LARCENY OFFENSES



NOTE: Statistics for CY2015 used in this report may differ from those published in 2015 reports. Additional cases were reclassified as they were under active on-going investigations after the CY2015 was published. This may include status changes to initial offenses and reclassification of offense titles from the initial date reported.



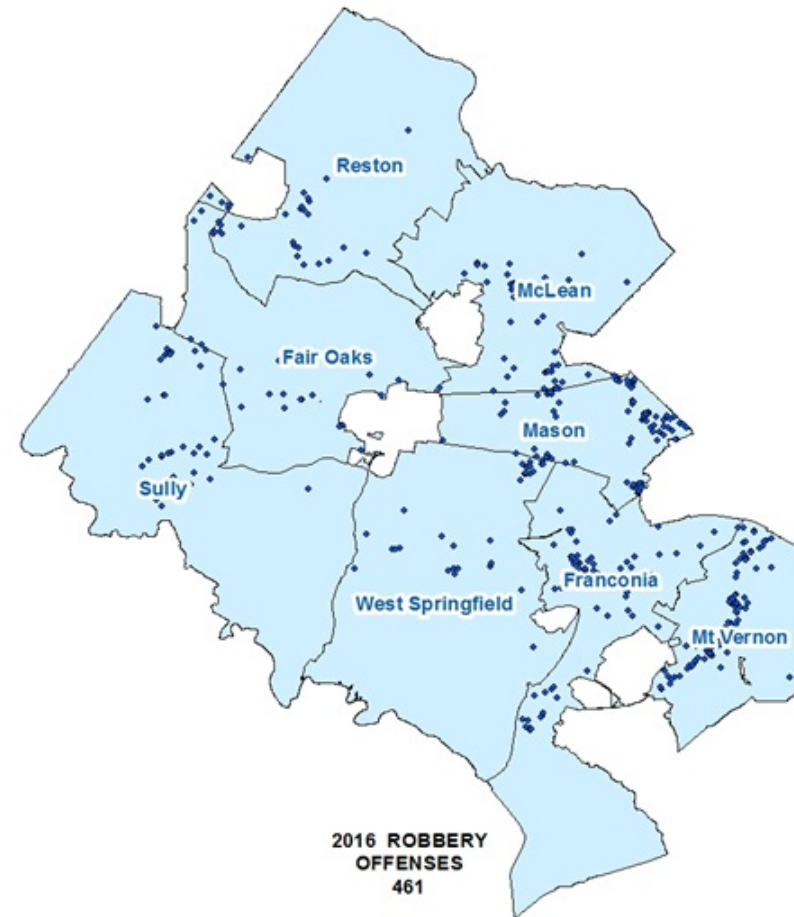
FCPD MOTOR VEHICLE THEFT OFFENSES



NOTE: Statistics for CY2015 used in this report may differ from those published in 2015 reports. Additional cases were reclassified as they were under active on-going investigations after the CY2015 was published. This may include status changes to initial offenses and reclassification of offense titles from the initial date reported.



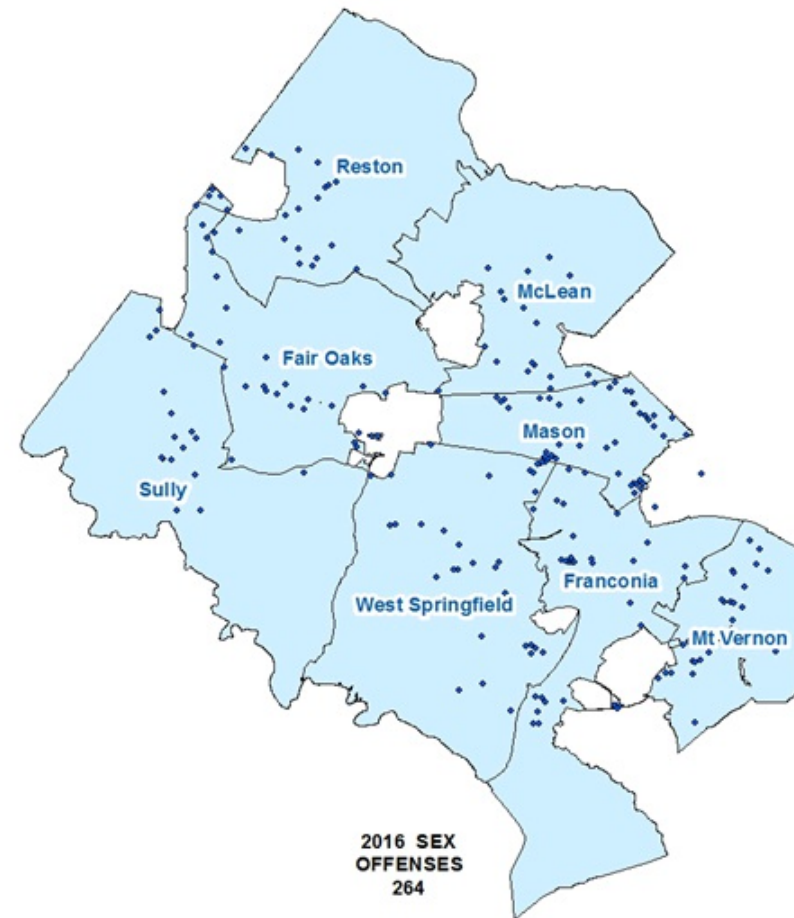
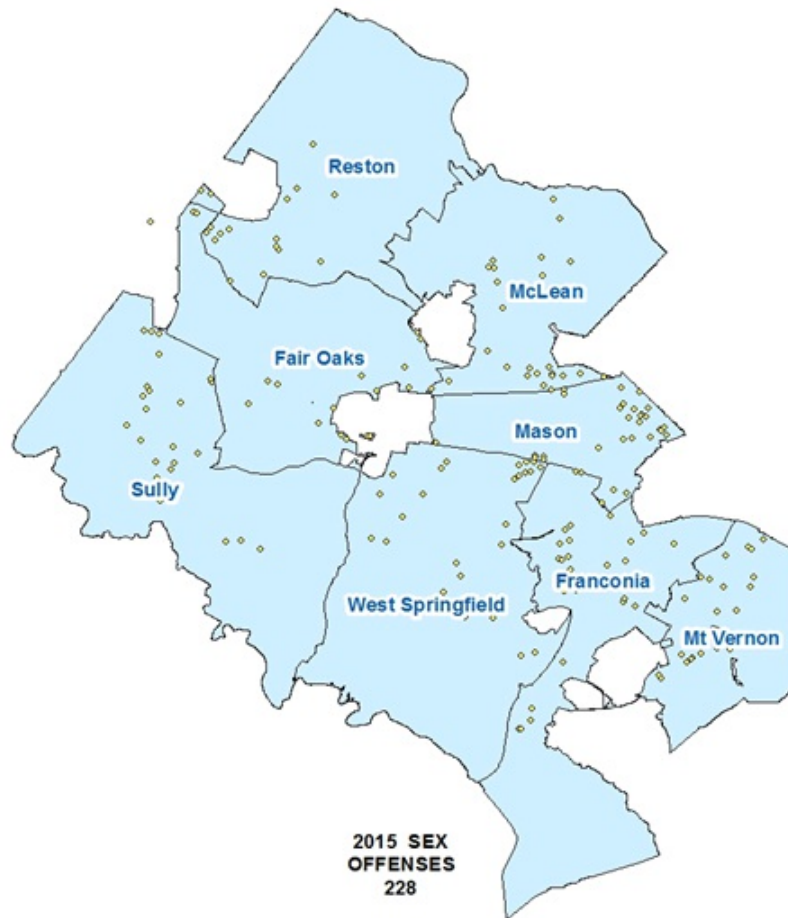
FCPD ROBBERY OFFENSES



NOTE: Statistics for CY2015 used in this report may differ from those published in 2015 reports. Additional cases were reclassified as they were under active on-going investigations after the CY2015 was published. This may include status changes to initial offenses and reclassification of offense titles from the initial date reported.



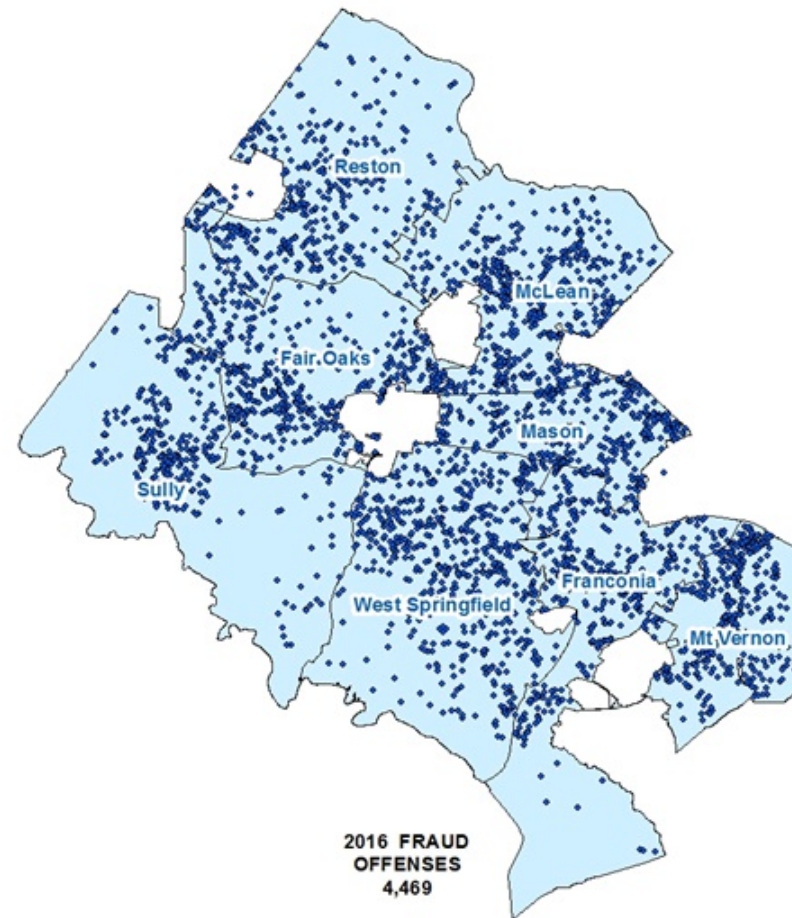
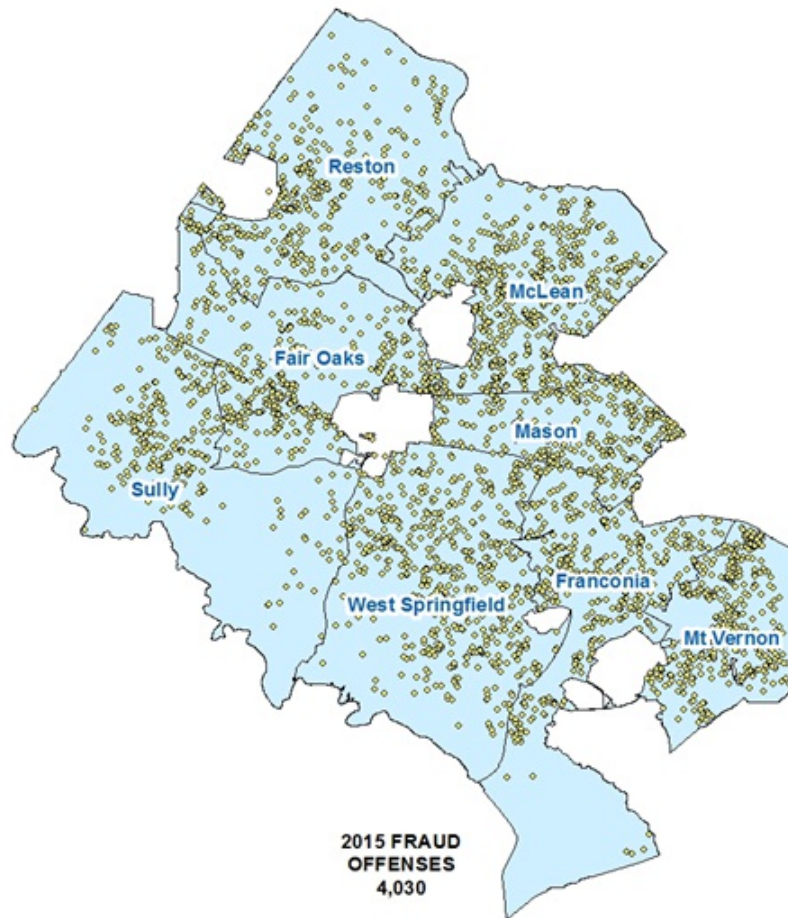
FCPD SEX OFFENSES



NOTE: Statistics for CY2015 used in this report may differ from those published in 2015 reports. Additional cases were reclassified as they were under active on-going investigations after the CY2015 was published. This may include status changes to initial offenses and reclassification of offense titles from the initial date reported.



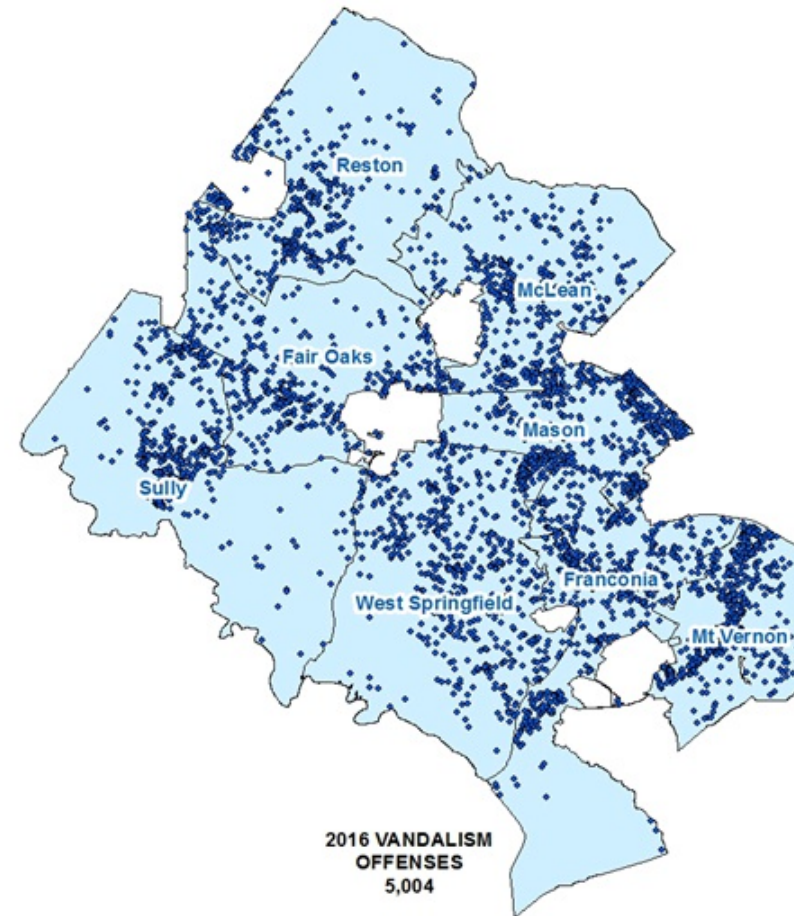
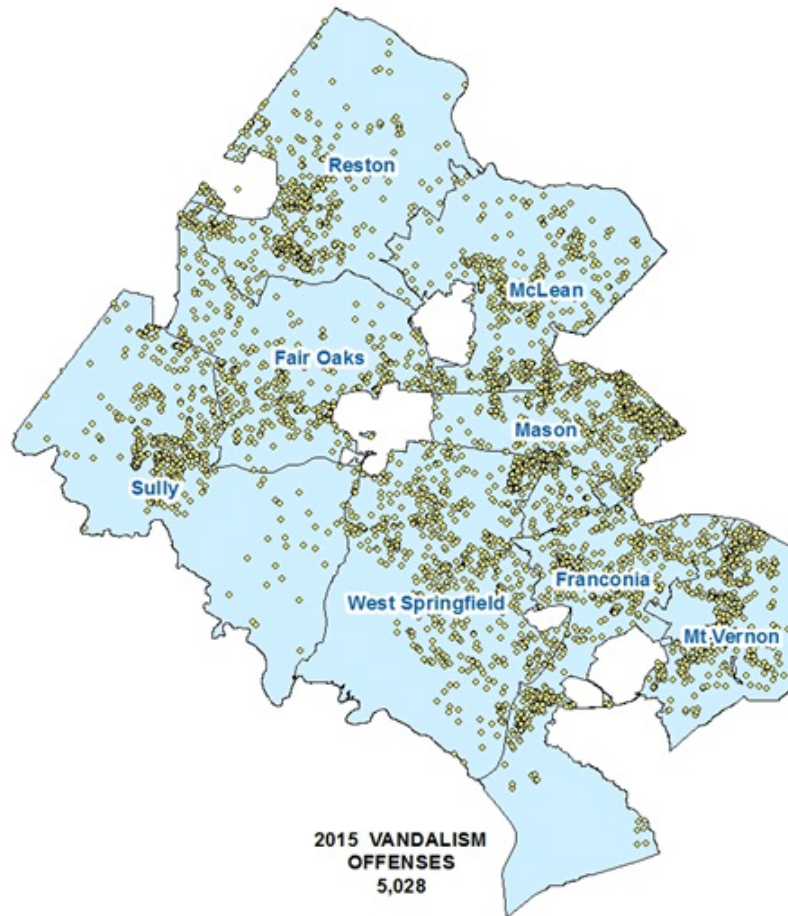
FCPD FRAUD OFFENSES



NOTE: Statistics for CY2015 used in this report may differ from those published in 2015 reports. Additional cases were reclassified as they were under active on-going investigations after the CY2015 was published. This may include status changes to initial offenses and reclassification of offense titles from the initial date reported.



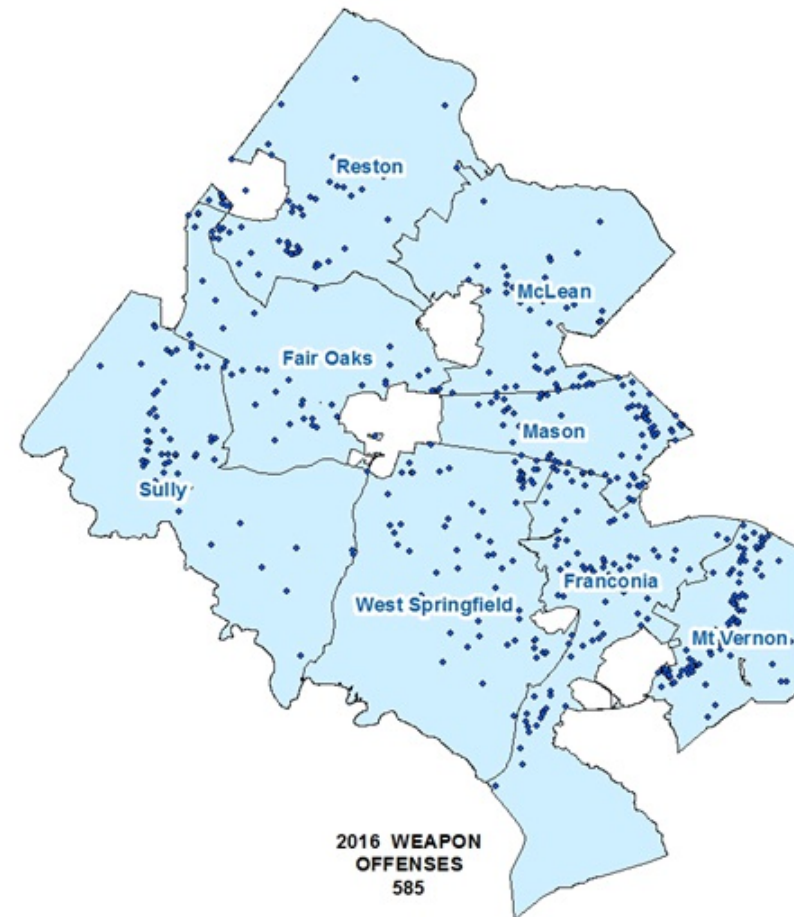
FCPD VANDALISM OFFENSES



NOTE: Statistics for CY2015 used in this report may differ from those published in 2015 reports. Additional cases were reclassified as they were under active on-going investigations after the CY2015 was published. This may include status changes to initial offenses and reclassification of offense titles from the initial date reported.



FCPD WEAPON VIOLATIONS



NOTE: Statistics for CY2015 used in this report may differ from those published in 2015 reports. Additional cases were reclassified as they were under active on-going investigations after the CY2015 was published. This may include status changes to initial offenses and reclassification of offense titles from the initial date reported.