

Willard-Sherwood Health and Community Center

Virtual Design Showcase – January 18, 2024



Zoom Orientation

Before starting the presentation, let's do a

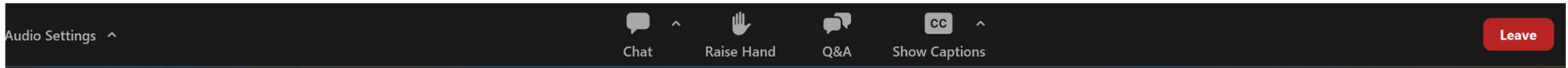
Zoom Technology check

and understand

Ground rules

To get in line to ask a question verbally.

Turn on closed captioning.



Chat function is disabled – use Q&A button to right to type in questions and comments!

Type questions and comments.



Agenda

- **Team introduction**
- **Project Overview**
- **Project Status**
- **Community Feedback - Concept Design**
- **Selected Concept**
- **Concept Development**
 - **Site Plan / Multimodal Transportation Plan**
 - **Overall Plans**
 - **Performing Arts addition**
 - **Design Precedent Images**
 - **Exterior Design Schemes 1 & 2**
- **Stakeholder Feedback**
- **Next steps**
- **Questions / Conversations**



Project Overview

Site:

3750/3740 Blenheim Blvd, Fairfax VA – 22030.



Scope:

- Demolition of Joseph Willard Health Center
- New 100,000 SF Health & Community Center building
- Connection to Sherwood Community Center
- Underground parking garage, site improvements

Features:

- Facility incorporates programs & services from:
County’s - Health Department and Office for Children
City’s - Parks & Recreation Department
- Improves ingress / egress & site circulation
- Coordinated with City’s Multimodal Transportation Plan Design

Sustainability Goals:

- LEED Gold certification
- Net Zero energy
- All-Electric Building Systems & Equipment

Project Schedule:

PHASE I COMPLETED ◀ ▶ PHASE II
 ↓ WE ARE HERE

Due Diligence	Concept Design	Design Zoning Permits GMP		Construction	
DEC 2021 ↔ JAN 2022	FEB 2022 ↔ JULY 2023	3 RD QTR 2023 ↔	2 ND QTR 2025	3 RD QTR 2025 ↔	4 TH QTR 2027



Project Status

- Concept 1 Selected – 3 Stories with Underground Parking – April 2023
- AE – Phase II Design and Construction Contract award - September 8, 2023
- Schematic Design Stakeholder meetings:
 - Board of Architectural Review – December 6, 2023
 - Development Review Team Meeting – December 8, 2023
 - Parks and Rec Advisory Board Meeting – December 14, 2023
 - Commission on the Arts – December 19, 2023
- Construction Manager at Risk (CMAR) Contract award – In Progress



Community Feedback – Concept Design

Round 1 Community Meetings (Jan to Mar 2022)

- Building amenities
- Outdoor/Indoor features
- Safety
- Traffic/parking
- Minimize construction disturbance

Round 2 Community Meetings (Oct to Dec 2022)

- Concept with Undergrade parking - Most favored
- Renovation/Addition to Sherwood Center for Performing Arts

What We Heard

How Will You Get There?

We asked survey respondents when they go to this campus, how do they usually travel there.



89%

CAR



25%

WALK



8%

BIKE



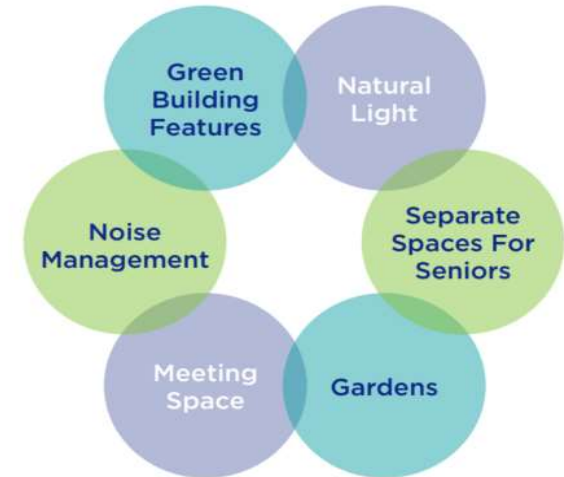
2%

BUS

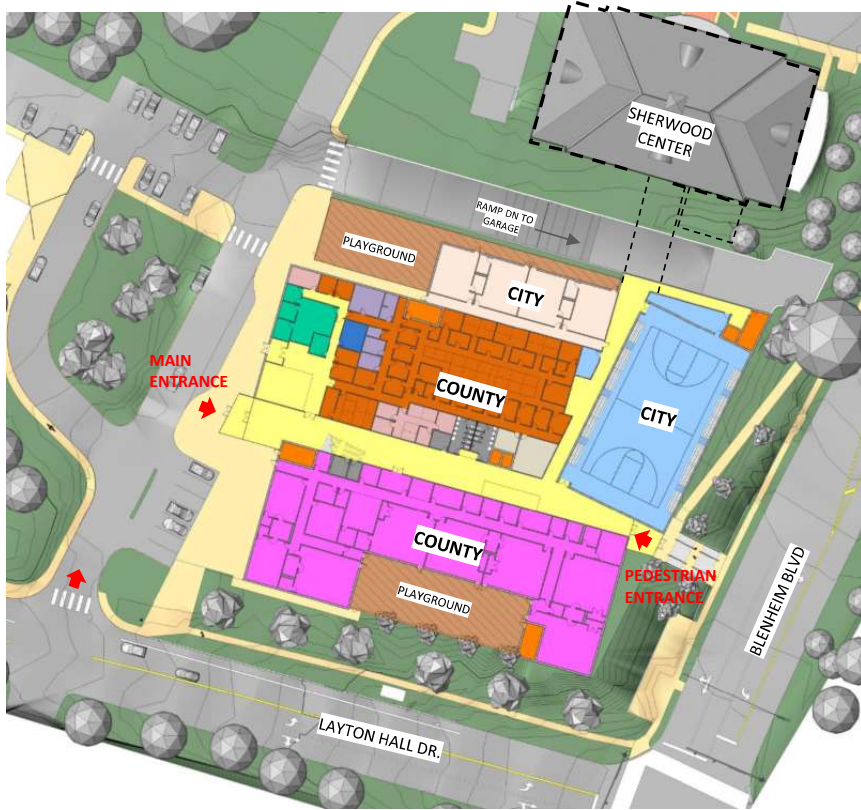
SOME DO BOTH

What's MOST Important?

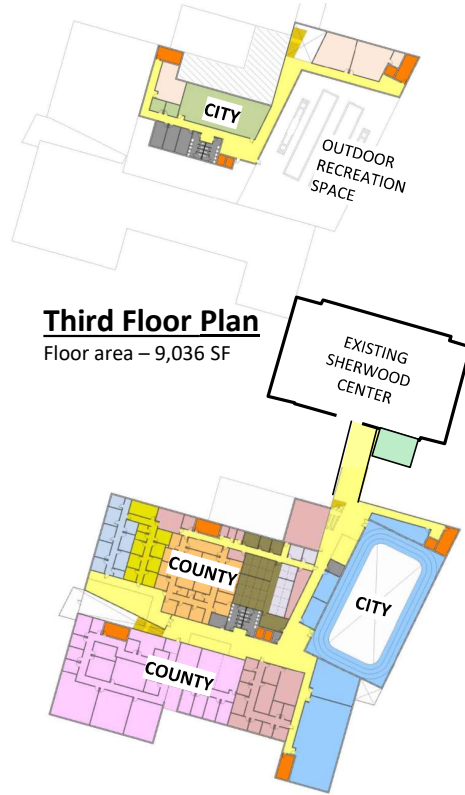
When asked to rank a number of features from most important to least, the following features were ranked most important by most survey respondents.



Selected Concept

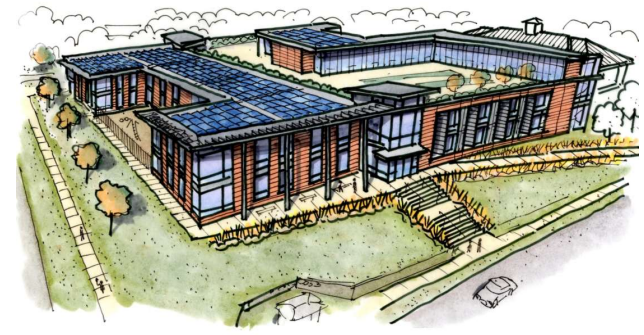


First Floor Plan
Floor area – 49,516 SF

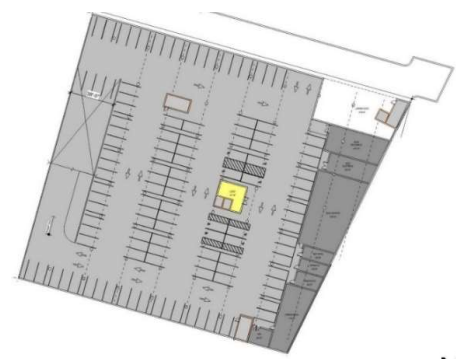


Third Floor Plan
Floor area – 9,036 SF

Second Floor Plan
Floor area – 44,237 SF



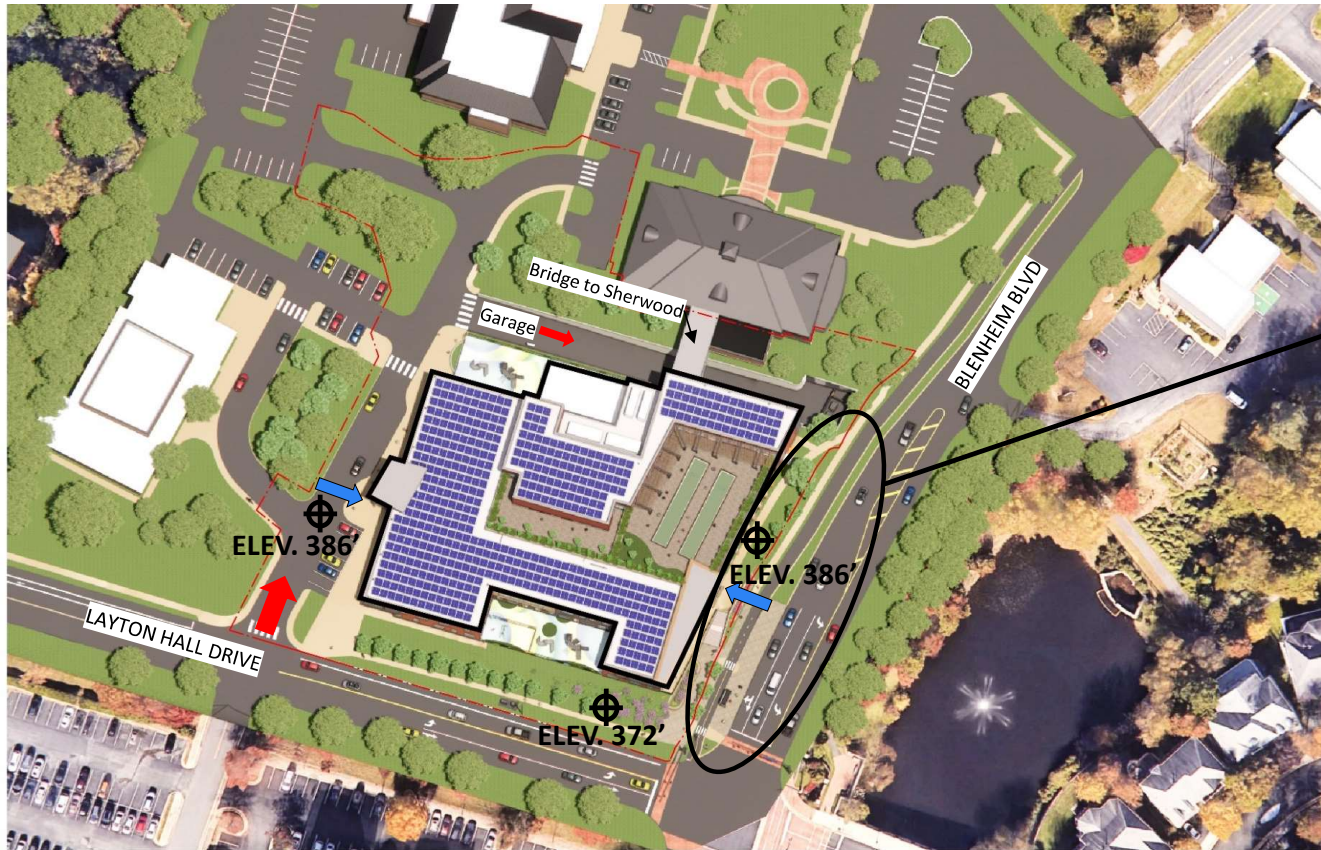
View from Blenheim Blvd



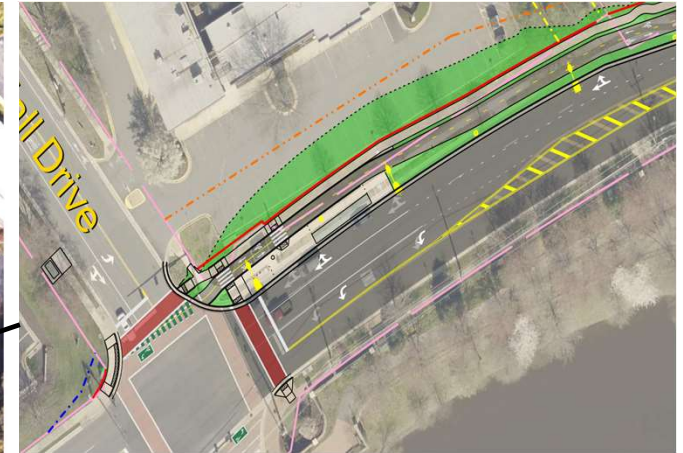
Basement Level 1 Plan
Floor area – 57,780 SF



Site Plan | Multimodal Transportation Plan



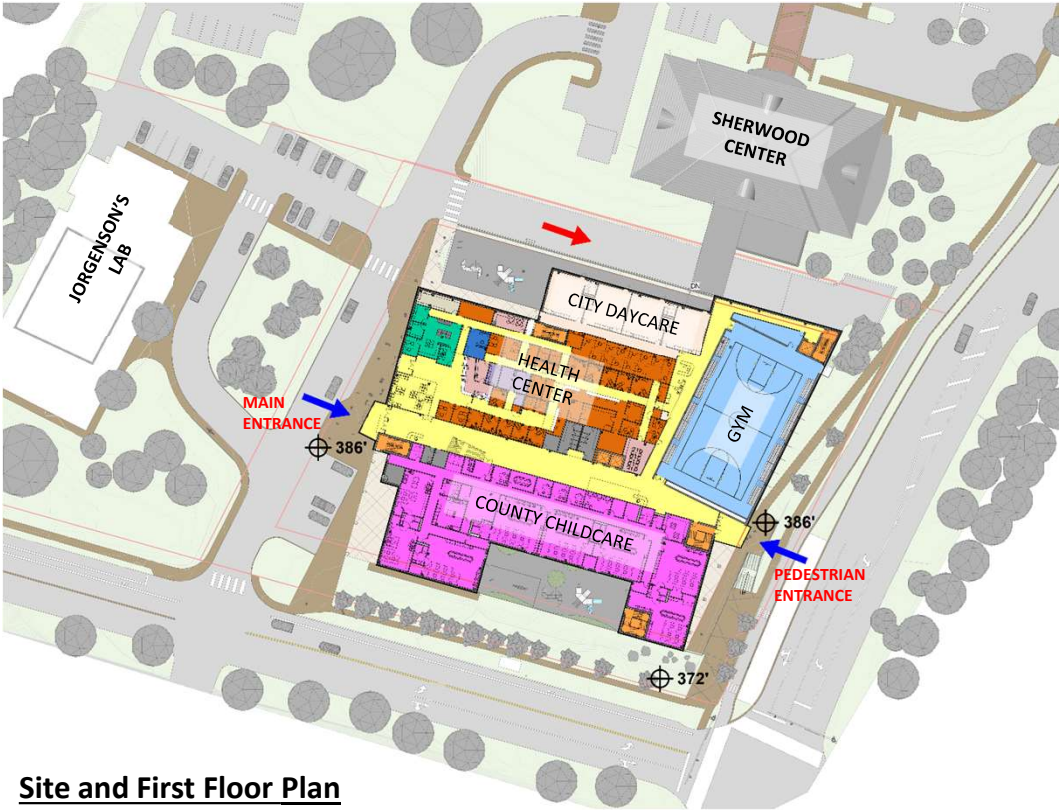
Site Plan



Multimodal Transportation Plan

- Elevation Changes & Impact
- Encroachment
- Additional Retaining Walls
- ADA Access

Floor Plans



Site and First Floor Plan

Floor area – 49,516 SF



Basement Level 1 Plan

Floor area – 55,834 SF

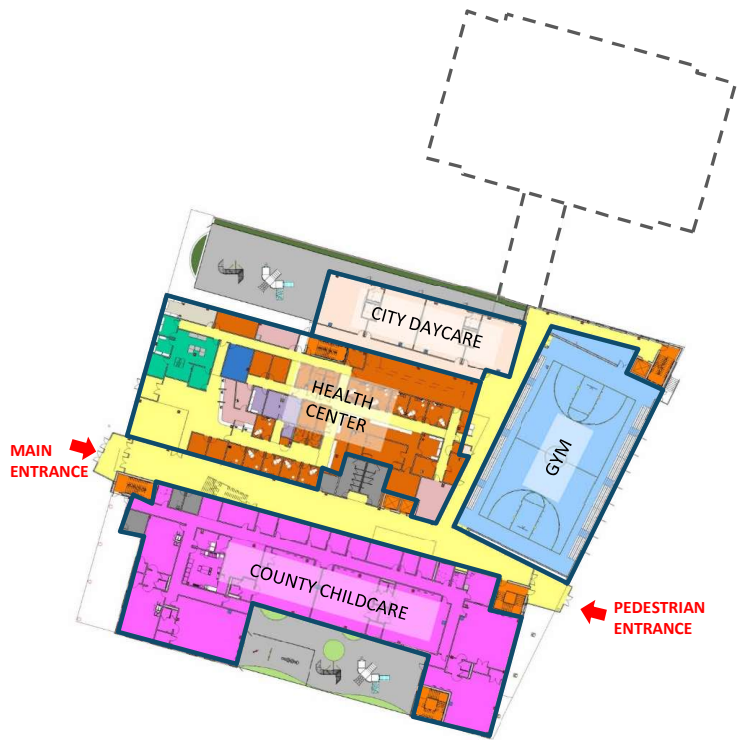
Basement Level 2 Plan

Floor area – 57,780 SF

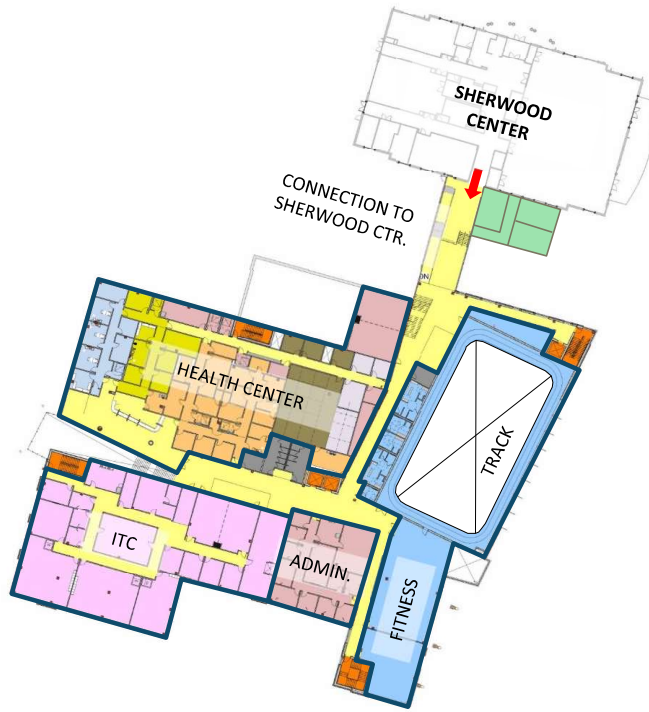
PARKING SCHEDULE - OVERALL					
TIER	STANDARD	COMPACT	ACCESSIBLE CAR	ACCESSIBLE VAN	TOTAL
LEVEL B02	129	5	0	0	134
LEVEL B01	99	4	6	2	111
	228	9	6	2	245



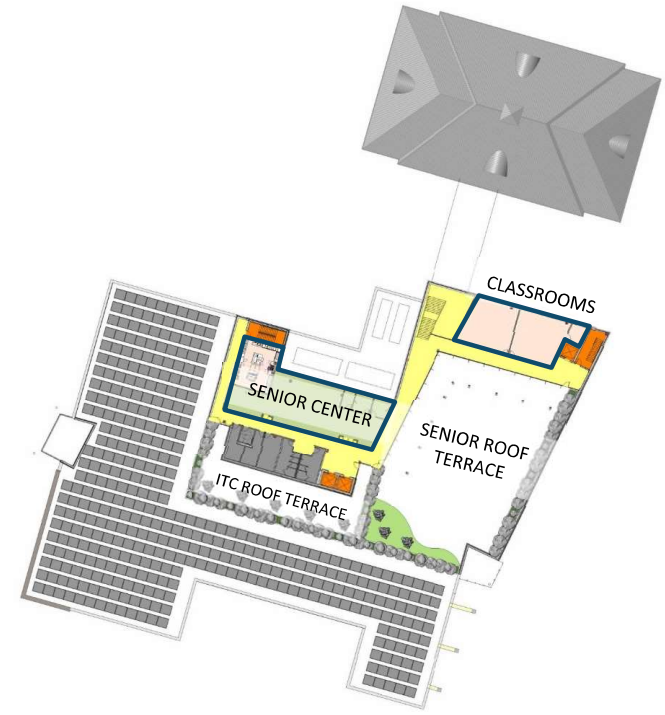
Floor Plans



First Floor Plan
Floor area – 49,516 SF



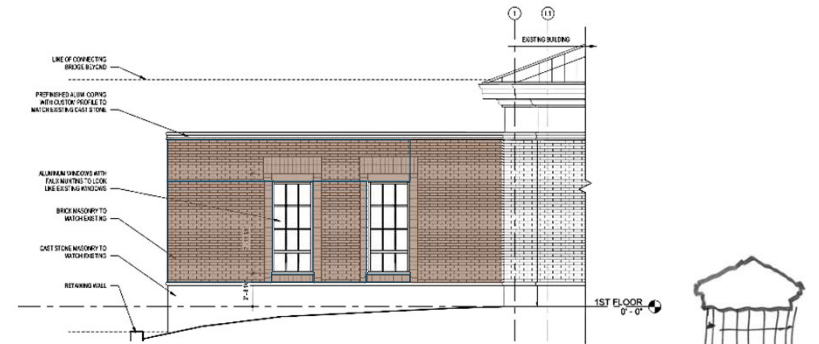
Second Floor Plan
Floor area – 44,237 SF



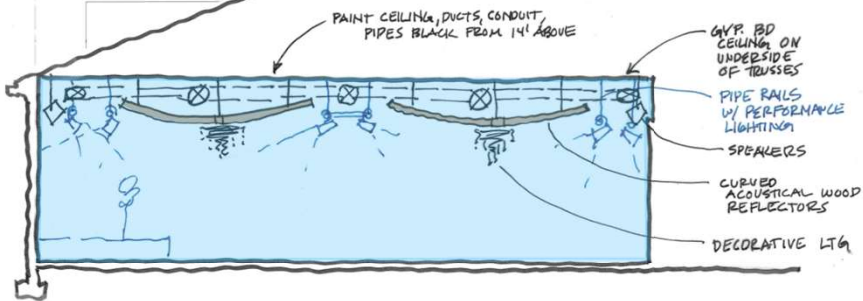
Third Floor Plan
Floor area – 9,036 SF



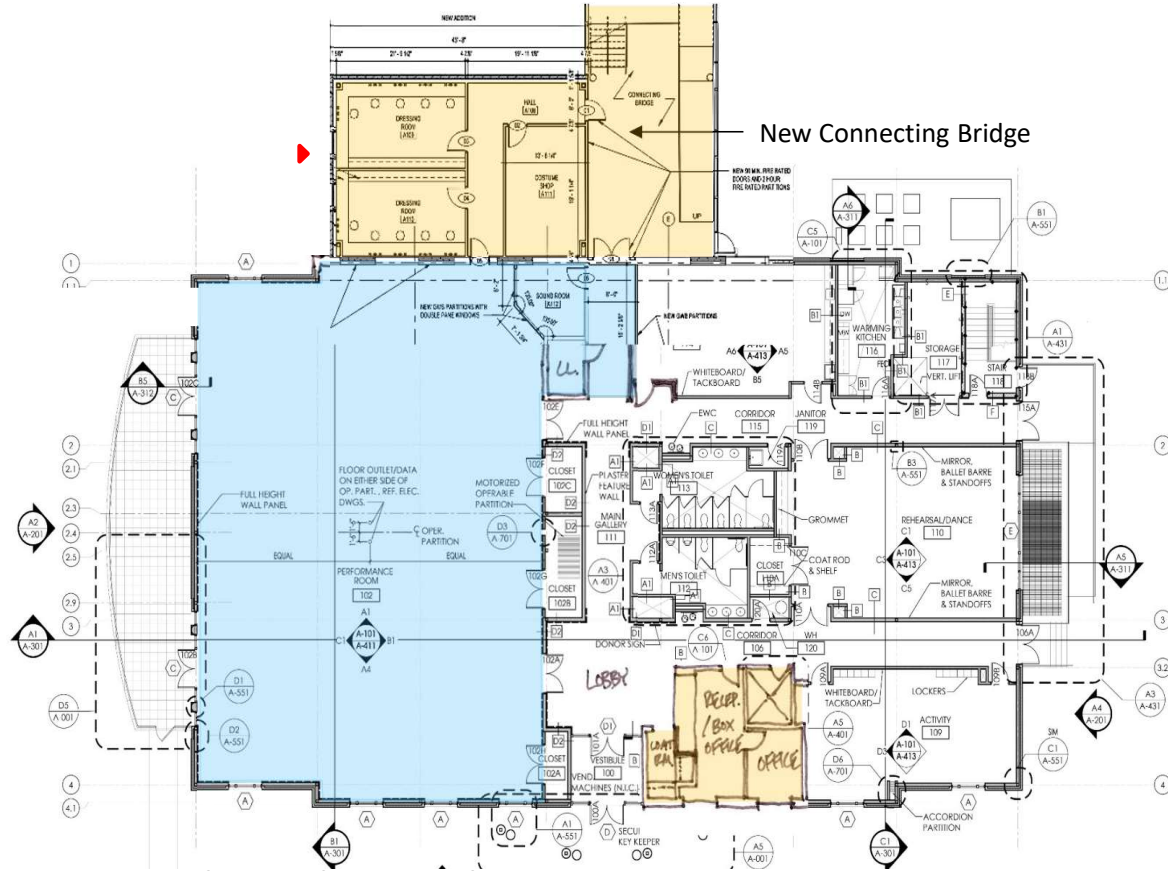
Willard-Sherwood Health and Community Center Performing Arts Addition



Elevation of Addition



**Addition to Existing Sherwood Center –
Typical Ceiling Section**



Addition to Existing Sherwood Center - Plan



Local Precedent Images | Context Analysis



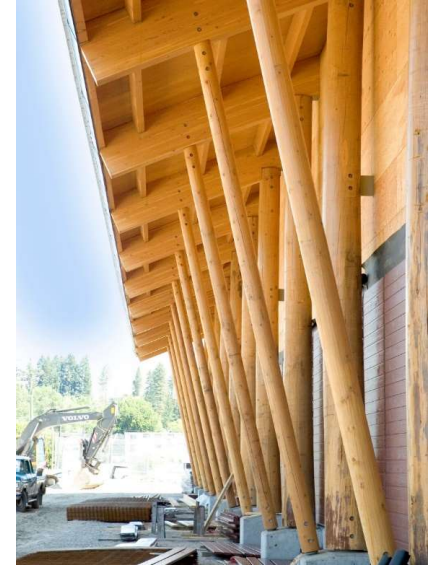
City of Fairfax Architectural Context



Design Precedent Images



Brick Construction



Stone wall terracing



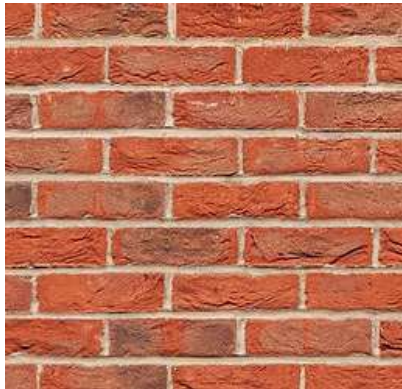
Metal Panel Construction



Wood Construction

Proposed Exterior Building Materials

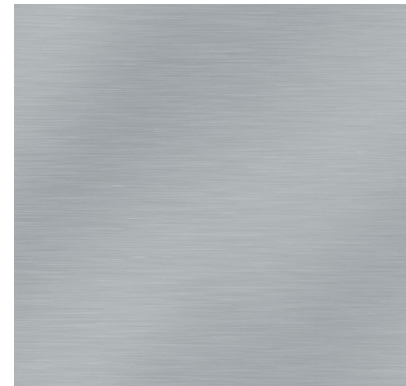
Brick



Manufactured
(Cultured)
Stone



Wood Looking
Metal Panels



Grey Looking
Metal Panels

Exterior Design Schemes



Scheme **1**



Scheme **2**

Design Scheme 1



Design Scheme 1

View from intersection of Blenheim Blvd. and Layton Hall Drive



Design Scheme 1



View Along corner of Layton Hall Dr. and Blenheim Blvd



View Along Layton Hall Drive



View from Vehicular Site Entrance from Layton Hall Drive



View from Vehicular Site Entrance

Design Scheme 2



Design Scheme 2

View from intersection of Blenheim Blvd. and Layton Hall Drive



Design Scheme 2



View from intersection of Blenheim Blvd. and Layton Hall Drive



View Along Layton Hall Drive



View from Vehicular Site Entrance from Layton Hall Drive



View from Vehicular Site Entrance

Stakeholder Feedback

- Support Design Scheme 1 – provides opportunity to program the exterior space
- Suggest additional parapet variations to adjust massing
- Appreciate vehicle access to Sherwood from Layton Hall
- Provide ADA ramp access from Bus Stop
- EV stations in Garage
- Appreciate that the project incorporates PV panels
- Passive shading at Gym – provides opportunity for art
- Incorporate locations for Visual Arts – sculpture space



Next steps

- **Construction Manager Contract Award – Pre-construction services**
- **Complete Schematic Design – Finalize Exterior Design Scheme**
- **City Decision to Advance Performing Arts Modification to Sherwood**
- **Design Development Phase**



Questions / Conversations with the Project Team



Thank You for joining us

(The presentation will be uploaded to the project website.)

Project website: [Willard-Sherwood Health and Community Center | Public Works and Environmental Services \(fairfaxcounty.gov\)](https://www.fairfaxcounty.gov/public-works-and-environmental-services/willard-sherwood-health-and-community-center)

Provide Online input: [Willard-Sherwood Health and Community Center | Engage Fairfax \(fairfaxva.gov\)](https://www.fairfaxva.gov/engage-fairfax)

Email for questions: Willard-SherwoodProject@fairfaxcounty.gov

