

Ravenwood Park

Neighborhood Stormwater Improvement Project Study



Department of Public Works and Environmental Services
Working for You!



A Fairfax County, VA, publication
7/1/2024

Agenda



- Introductions
- Neighborhood Stormwater Improvement Project Study (NSIPS)
- Background
- Study Goals
- Scope
- Schedule
- Data Needs
- Q&A

Background

- Ravenwood Park Neighborhood
 - Developed before modern stormwater management regulations (1950s-60s)
 - History of drainage issues
 - Potential impacts of climate change
 - Potential impacts of ongoing redevelopment
- Pilot for neighborhood/community scale studies
- 2022: Study began by county staff
 - June 2023: key personnel retired
- 2023: GKY was engaged to finish the study
 - March 2024: task order executed
 - Modeling is underway
 - Finalizing and refining base model created by county staff



Study Goals



Analyze Existing Conditions



Analyze Potential Development Impacts



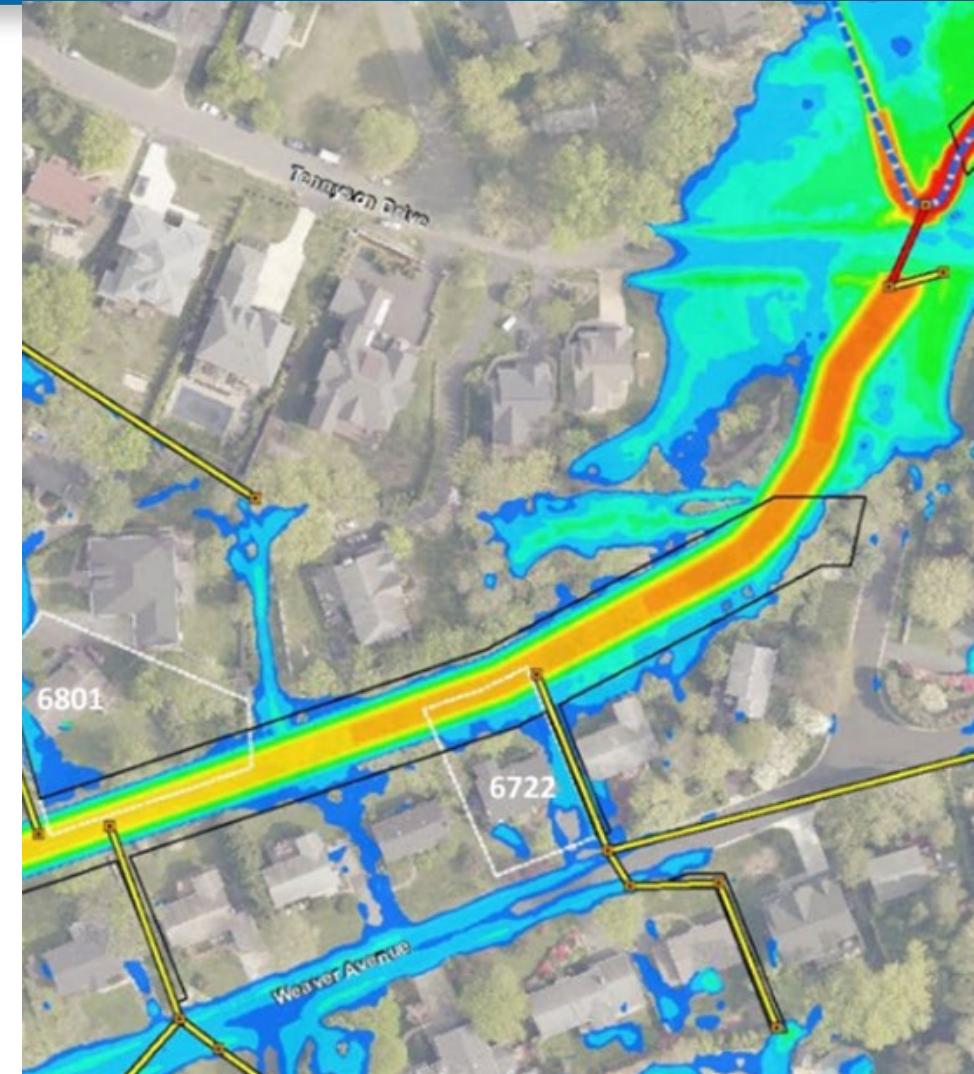
Analyze Climate Change



Identify Strategic Stormwater Solutions to Mitigate Flooding

Scope

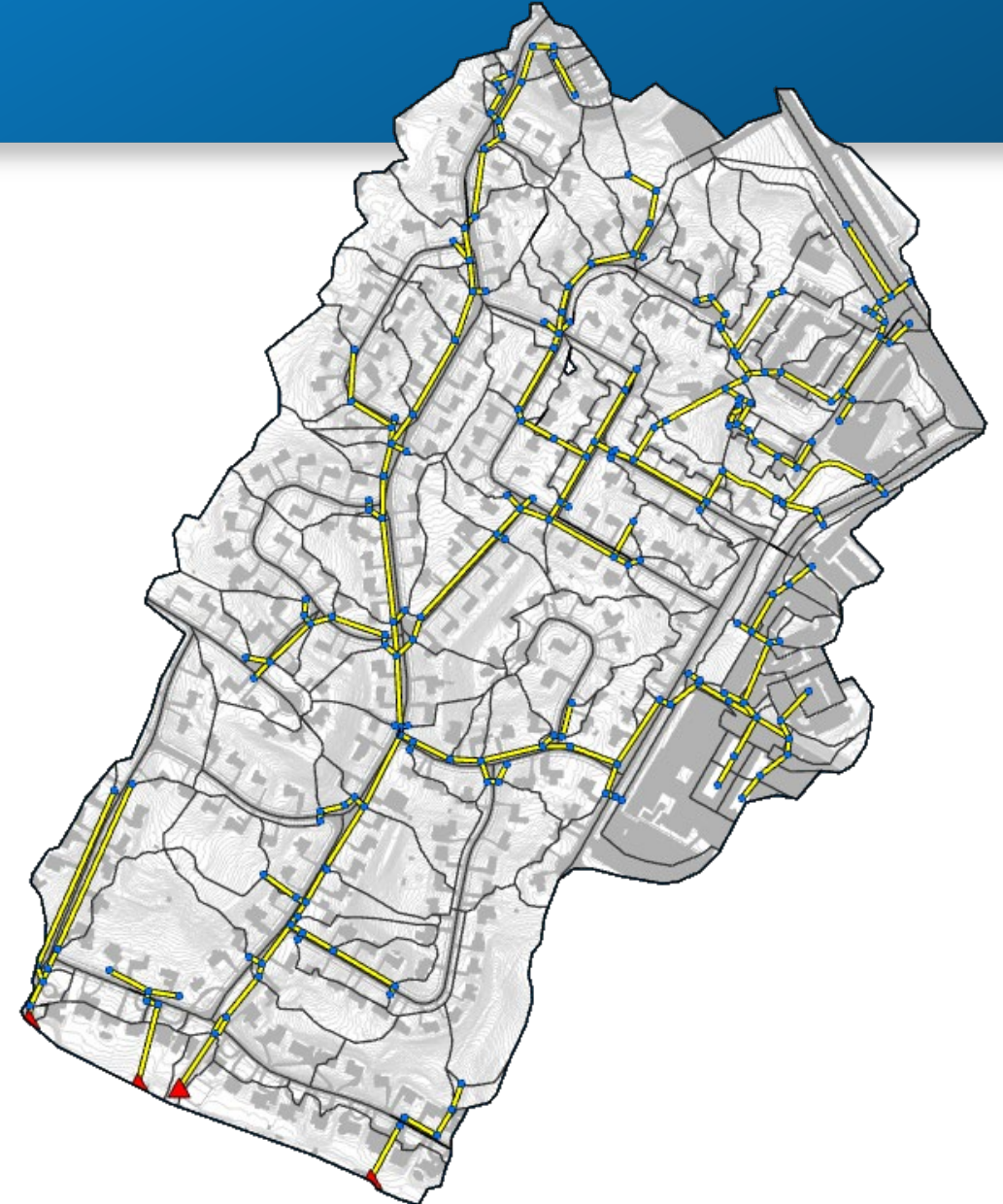
- Review of existing data provided by the County
- Develop and calibrate complete 1D/2D PCSWMM model
- Develop multiple existing and future condition models of the watershed
- Sensitivity Analysis
 - Determine the least intense design storm that causes structural flooding
- Strategic Stormwater Management Solutions
 - Conceptual suite of potential stormwater solutions to mitigate flooding
 - Does not include lot-specific implementation of solutions





Request for Flood Information

- Flooding information is needed in order to calibrate the model and increase accuracy
 - Photos
 - Videos
 - Anecdotal information (ex: “1ft of water in my backyard on July 8th, 2019”)
- Storm event
 - Determine the calibration event
- Location
 - Best to have calibration information in various areas throughout the watershed



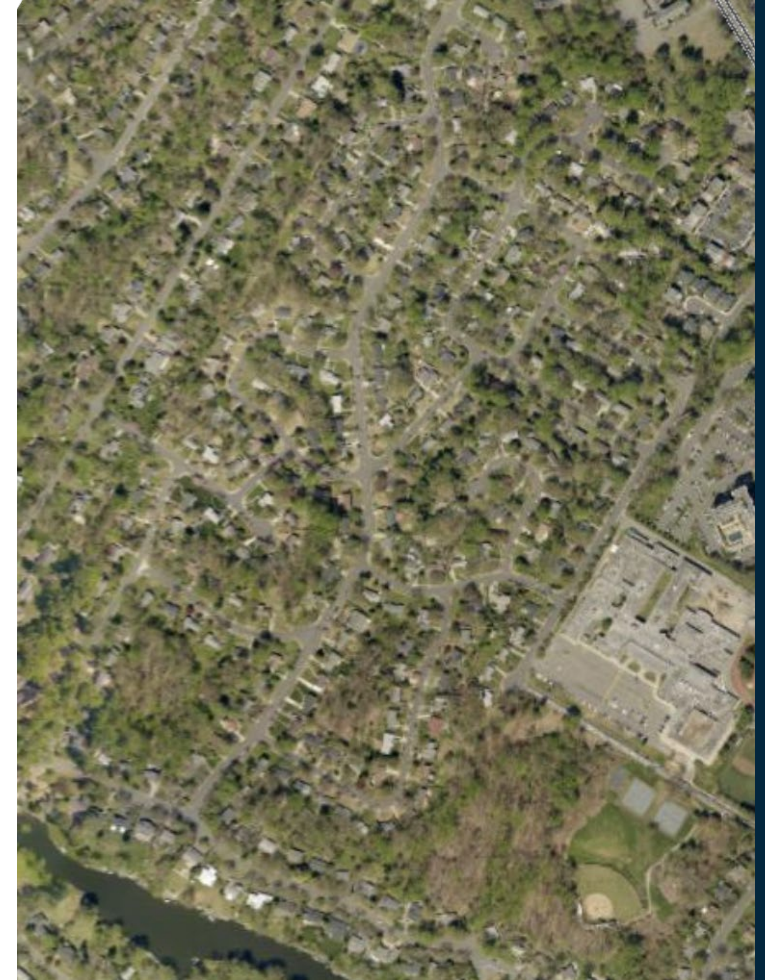
Key Takeaways

Study Goals:

- Gain a thorough understanding of the stormwater management challenges facing the neighborhood
- Analyze the impacts of climate change and ongoing redevelopment
- Develop a suite of conceptual solutions
- Study does not include lot-specific implementation of solutions

Data Requests:

- Flooding information increases model accuracy



Additional Information

For additional information, please contact

Madeleine Alwine

703-324-8597

madeleine.alwine@fairfaxcounty.gov

Paul Reynolds

703-877-2862

paul.reynolds@fairfaxcounty.gov

www.fairfaxcounty.gov/publicworks

