

# Wanted: Spotted Lanternfly

## About the insect:

- Invasive insect from East Asia
- Excellent hitch-hiker and jumper
- Feeds on grapes, stone fruit trees and 70 other plant species

## How to help:

- Educate yourself and friends
- Inspect your outdoor work area
- Take pictures or capture any you find
- **Report sightings to Urban Forestry:**  
703-324-1770, TTY 711 or  
[PestMail@fairfaxcounty.gov](mailto:PestMail@fairfaxcounty.gov)

## Where to look:

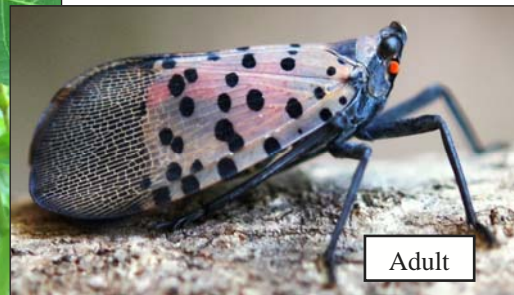
- Landscaping stone
- Rusty metal surfaces
- Outdoor vehicles
- Tree bark
- Pallets



Eggs



Nymphs



Adult



Jan	Feb	March	April	May	June	July	Aug	Sept	Oct	Nov	Dec
-----	-----	-------	-------	-----	------	------	-----	------	-----	-----	-----