



County of Fairfax, Virginia



Richmond Highway Bus Rapid Transit

Station Design
November 2020

The Richmond Highway BRT project is funded in part by the Northern Virginia Transportation Authority.



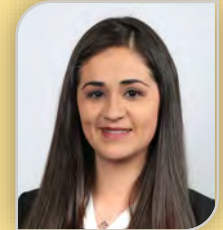
Agenda

- About This Meeting
- Project Update
- Station Architecture
 - Design Background and Process
 - Two Station Concepts
 - Neighborhood Identity Elements
- Next Steps
- Survey Overview
- Discussion/Q&A

Presenters

Vanessa Aguayo, PE

- FCDOT
- Richmond Highway BRT Project Manager



Laura Jeffords

- Architect
- Richmond Highway BRT Team



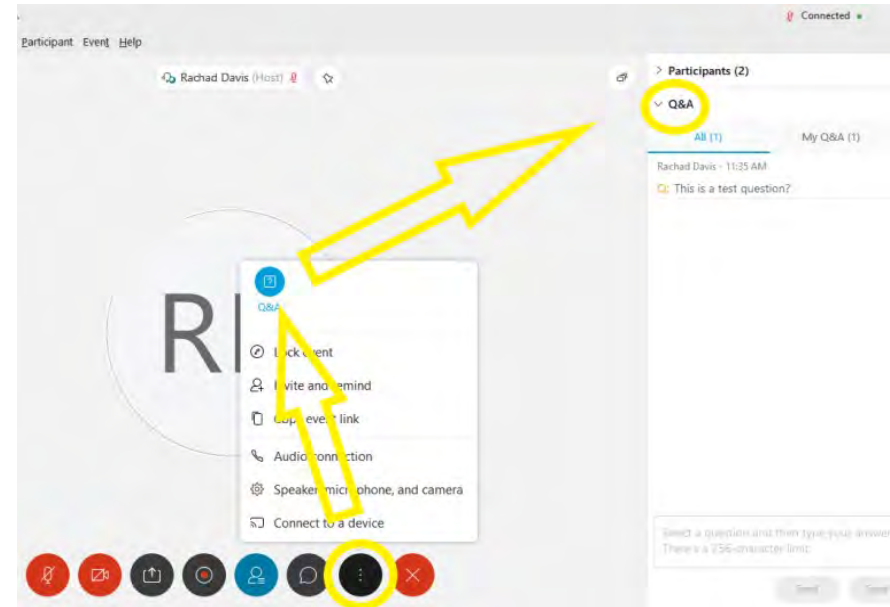
Matthew Noe

- Architect
- Richmond Highway BRT Team



About Tonight's Meeting

- **Presentation followed by Q&A**
- **To ask a question, please use the WebEx "Q&A" feature:**
 - Open the "Q&A" window.
 - Type in your question.
 - Please only use the "chat" feature for questions related to the meeting format or technical/computer issues.
 - We will respond first to station design questions and discuss other questions as time allows.
- **To ask questions via phone:**
 - Press *3 to "raise your hand" and to be added to the queue.



Project Updates



Overview

- The Richmond Highway Bus Rapid Transit (BRT) Project is an effort to **plan, design, and construct** a BRT system between Huntington Metrorail Station and Fort Belvoir
- **Nine potential BRT stations**, with the system constructed in two sections
- **VDOT has a related project in the corridor**

virginiadot.org/projects/northernvirginia/richmond_highway.asp

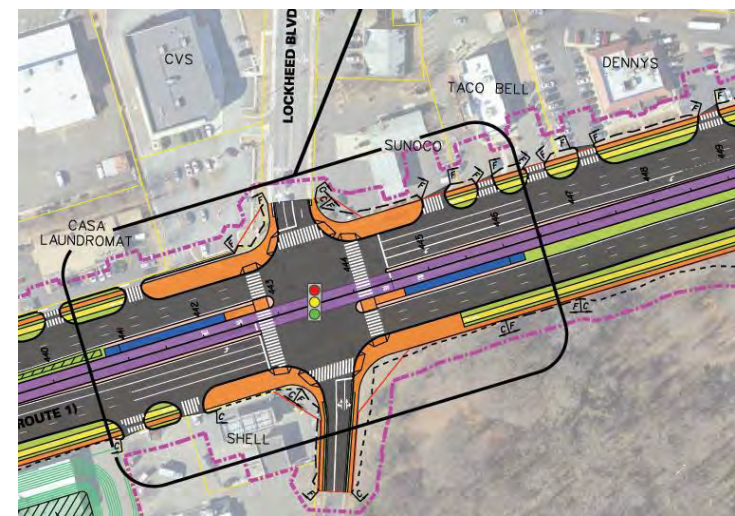
For more information about the benefits of BRT systems and background information related to Richmond Highway BRT, please visit the website:

fairfaxcounty.gov/transportation/richmond-hwy-brt



October Meeting: Right-of-Way

- Held virtual community meetings on **October 20 and 22** to share information about right-of-way acquisition
- Also provided general project updates at that meeting
- **View** the presentation slides and recording on the website: [fairfaxcounty.gov/transportation/richmond-hwy-brt/materials](https://www.fairfaxcounty.gov/transportation/richmond-hwy-brt/materials)



December Meeting Update

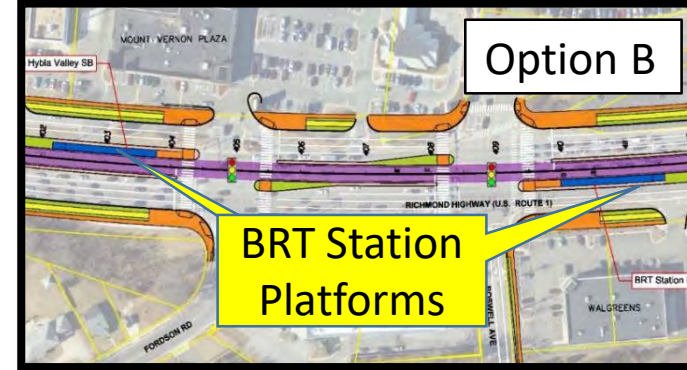
- Branding meeting will be rescheduled from December 2020 to early 2021.
- The December meetings will still be held on December 8 and 9, as planned **BUT** with a different agenda. Topics to include:
 - **BRT** year-end review / work completed in 2020
 - **VDOT Multimodal Improvements** project (Jeff Todd Way to Sherwood Hall Lane)
 - Approved **Urban Design Guidelines** for Richmond Highway
 - **Active Fairfax Transportation Plan** and other County efforts to improve pedestrian safety

For more information about how to participate in all meetings, visit:

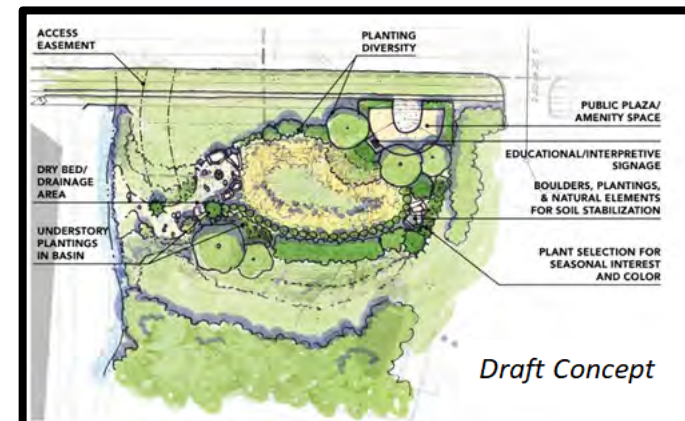
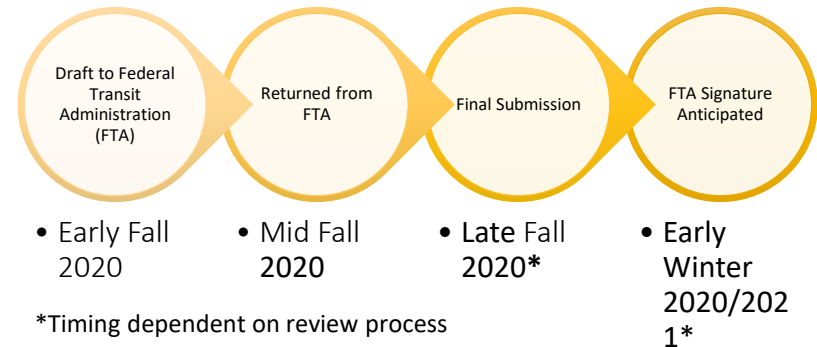
Fairfaxcounty.gov/transportation/richmond-hwy-brt

Project Progress-Design

- Design is at approximately 30%
- Updated roll plans are available on the website
- Selection of Hybla Valley Station
Option B:
 - Fordson Road will remain open and operate as it does today, as a full-access signal
- National Environmental Policy Act (NEPA)
 - Final signature anticipated 1st quarter 2021
- We will continue to refine the design, reduce/minimize impacts, and enhance stormwater management design



NEPA Schedule



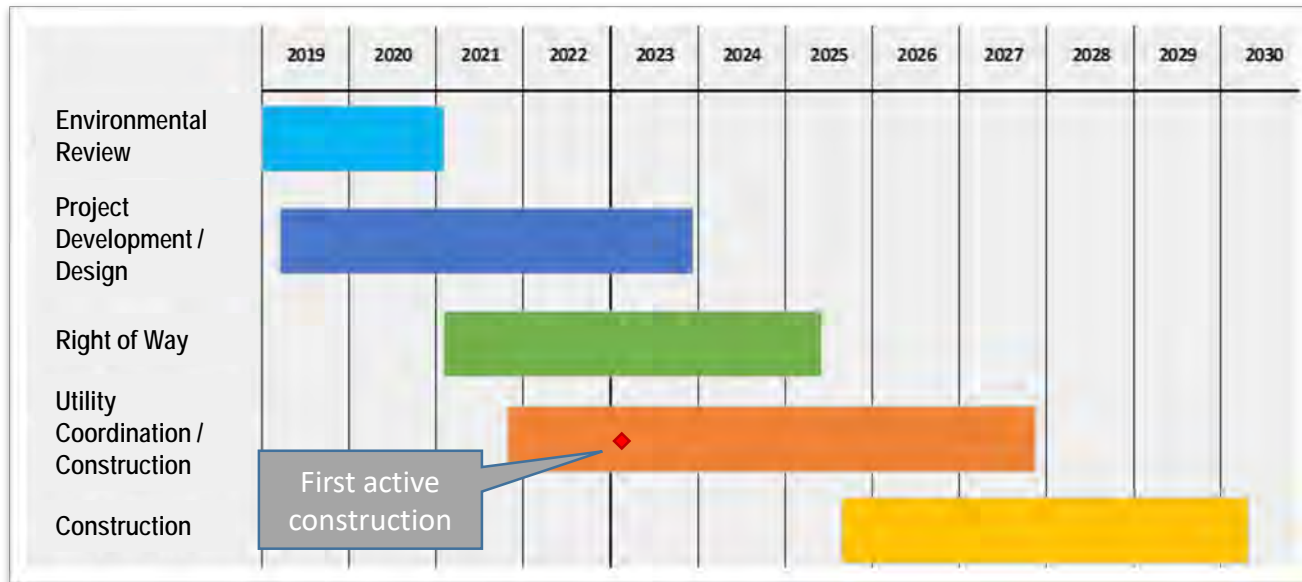
BRT Project Schedule

Reasons for schedule change:

- **Construction coordinated** with extended schedule for VDOT roadway widening project between Napper Road and Jeff Todd Way
- Revised **construction sequencing**
- Federally mandated **environmental process**
- **Right-of-way acquisition**, relocation **complexities**, extensive **utility relocation**
- Design changes to **reduce impacts**

Summary of new schedule:

- BRT revenue service in **early 2030**.
- Right-of-way acquisition must be complete prior to start of roadway construction.
- **First active construction** is overhead & utility relocation in **early 2023**.



Project Update Summary

- **For additional updates, please view the September 2020 project update presentation on the website**
 - View the presentation at fairfaxcounty.gov/transportation/richmond-hwy-brt
 - Or directly on YouTube: youtube.com/watch?v=043Nijl0oro
- **September 2020 Newsletter available at fairfaxcounty.gov/transportation/richmond-hwy-brt/materials**

Station Architecture

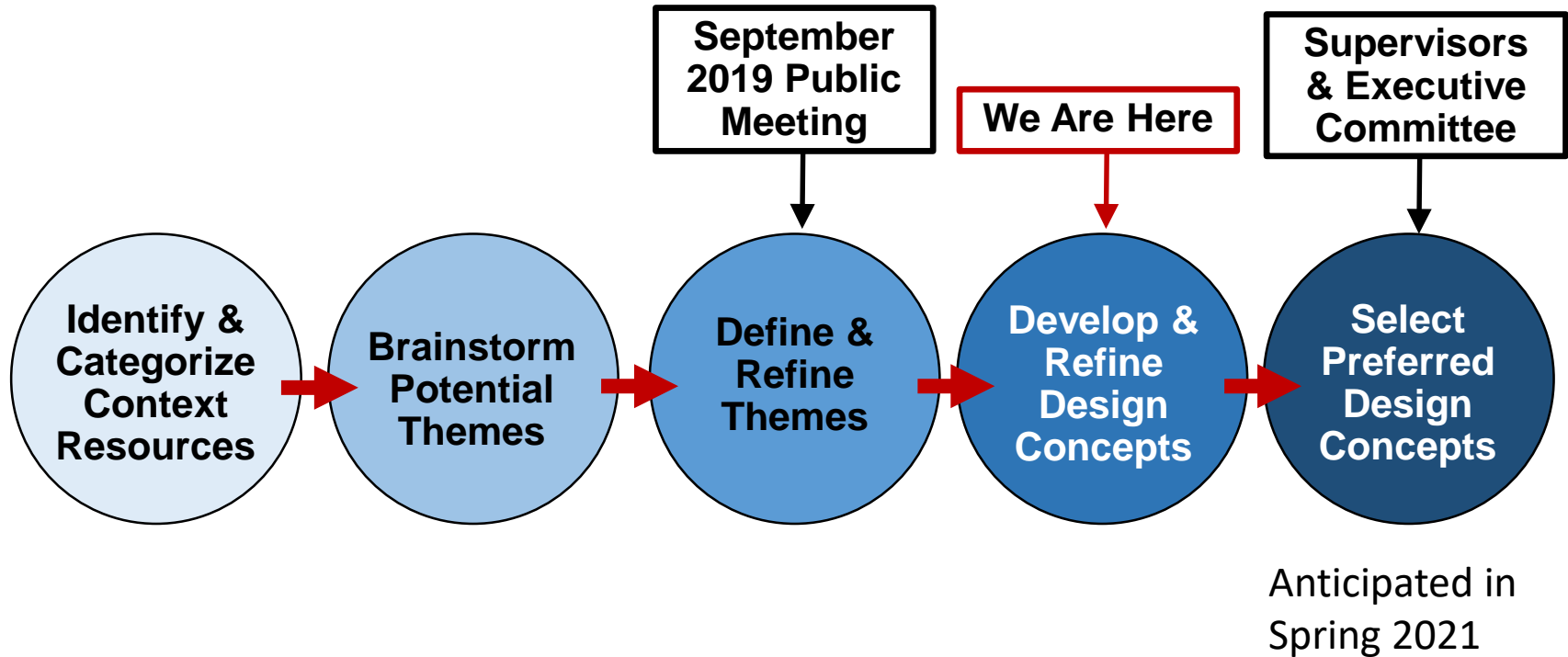
Background

What is “BRT Station Architecture”?

- BRT station architecture includes elements to protect passengers and keep them comfortable as they wait for the bus.
- BRT stations are designed differently than standard bus stops:
 - Elevated platform (so you don’t need to “step up” to board)
 - Longer station area and canopy
 - More protective design, due to being in the center of the roadway
 - Fare machines so you can pay before getting on the bus
 - Live messaging screens
 - Enhanced lighting and seating



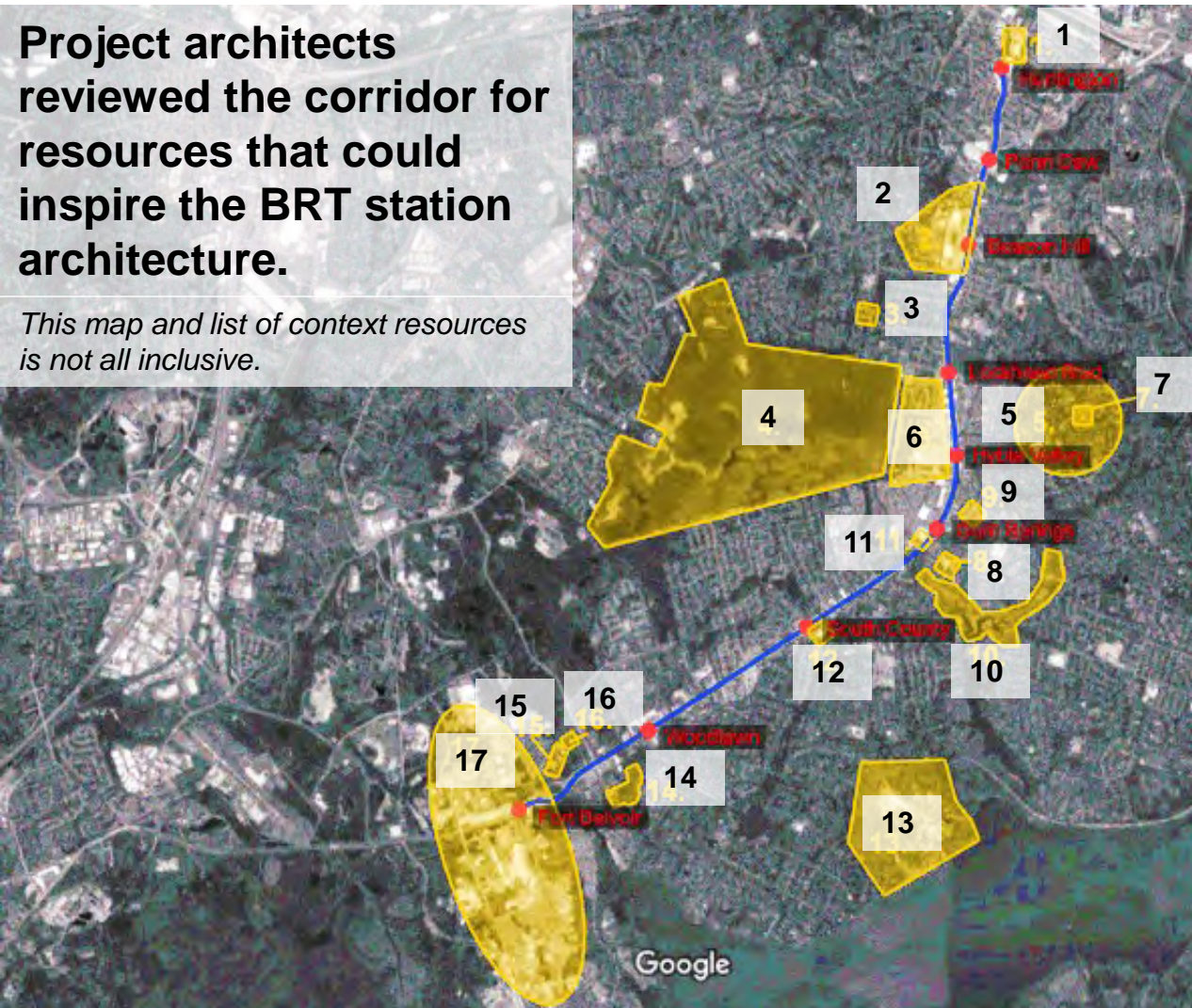
Process Overview



Identifying Context Resources

Project architects reviewed the corridor for resources that could inspire the BRT station architecture.

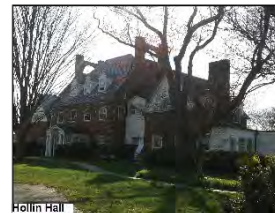
This map and list of context resources is not all inclusive.



1. Huntington Metro Station
2. Beacon Field Airport
3. Historic Huntley House
4. Huntley Meadows Park
5. Hollin Hills Mid-Century Modern Community
6. Hybla Valley Airport
7. Hollin Hall
8. Gum Springs Museum & Cultural Center
9. Bethlehem Baptist Church
10. Colonel John R. Byers Park
11. US Route 1 Wall of Aviation
12. Original Mount Vernon High School
13. Mount Vernon
14. George Washington's Gristmill
15. Woodlawn Plantation
16. Pope-Leighey House
17. Fort Belvoir

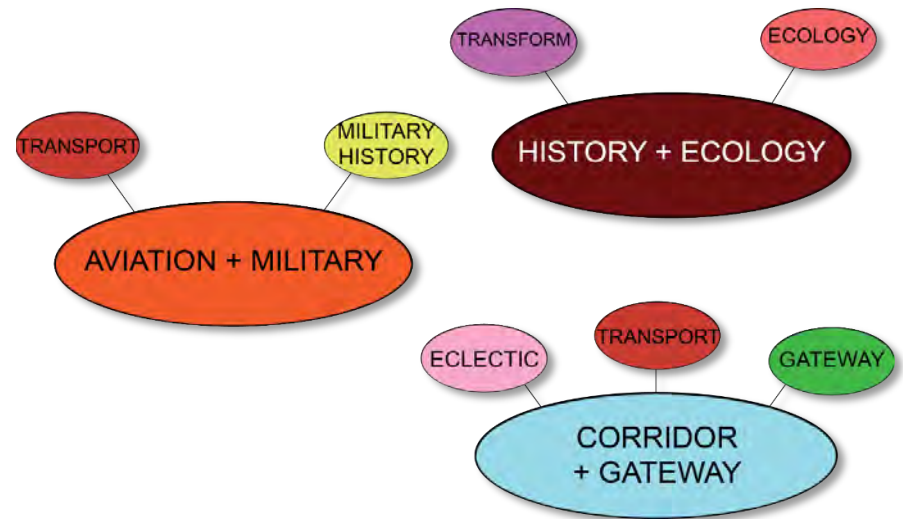
Initial Context Resources

In the review of project resources, the project architects found that the resources could be organized into potential “themes.”



Concept Development Process

- Presented three themes at a public meeting in September 2019.
- A majority of survey respondents stated a preference for the “History + Ecology” theme.
- The project architects created two drafted concepts for review, taking into account:
 - Technical station architecture needs
 - Community input related to the three themes
 - Design inspirations and precedents



Station Architecture

Concept Overview

Keep in Mind...

- We are sharing two potential concepts, for your input.
- In the end, there will be one concept that is taken to the next level of design. This design will be used for all nine Richmond Highway BRT stations.
- **These are conceptual designs**, not final designs. They do not show all station and station area components that will be included in the final design.
- **Components to be added or refined in a future stage:**
 - Security features
 - Landscaping and ecological features
 - Community identifying components (more details on this later in presentation)
 - Fare collection devices
 - Branding
 - Signage/wayfinding



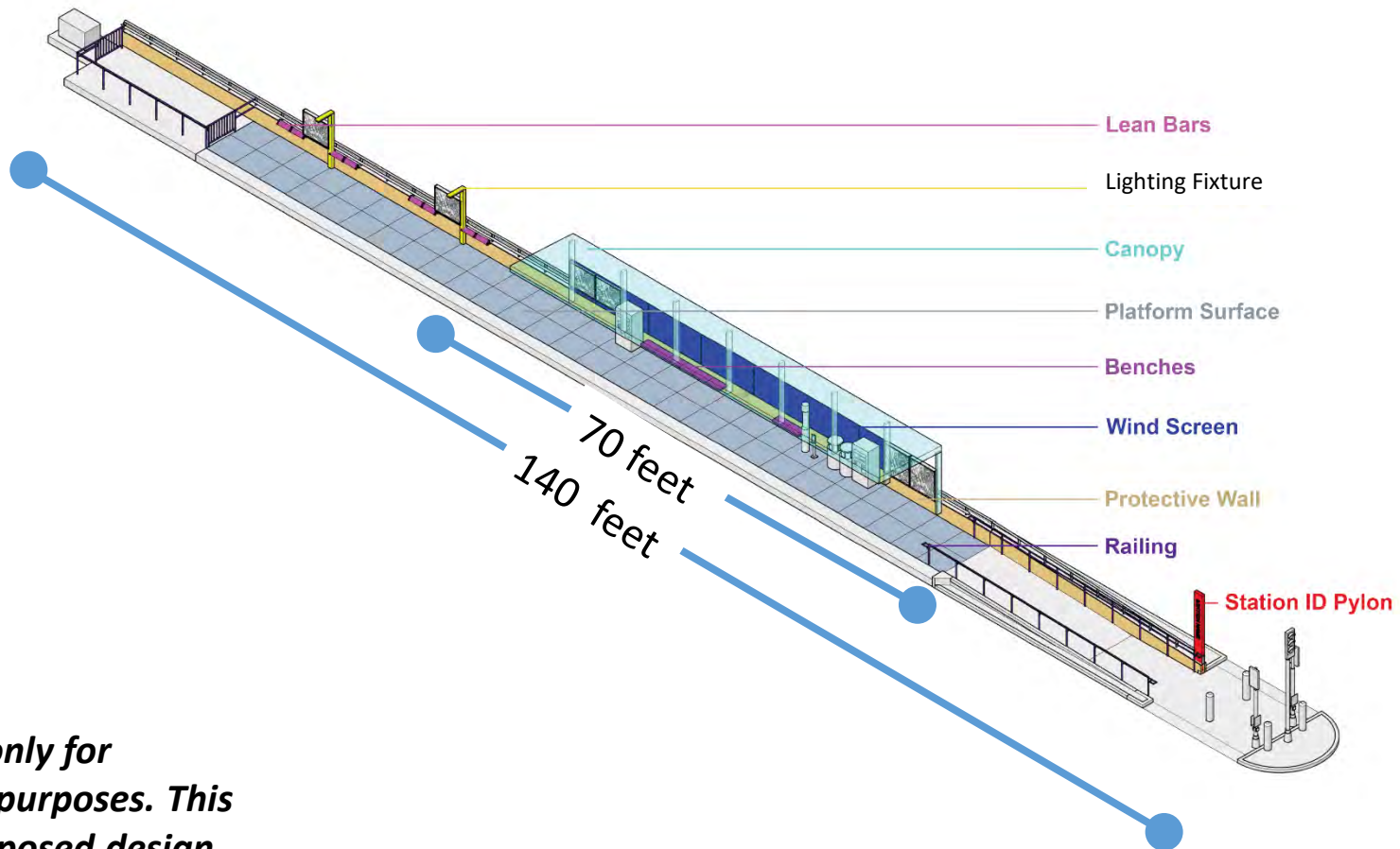
Two Station Design Concepts

- Both station design concepts have the same general components, for example:
 - Safety components such as railings, and protective walls
 - Comfort elements such as seating, a canopy/roof, windscreens, and lean bars
 - Wayfinding and signage components such as station pylons and system maps
 - Hardscape design components such as benches, lighting fixtures, paving, and community identity elements



Station Characteristics

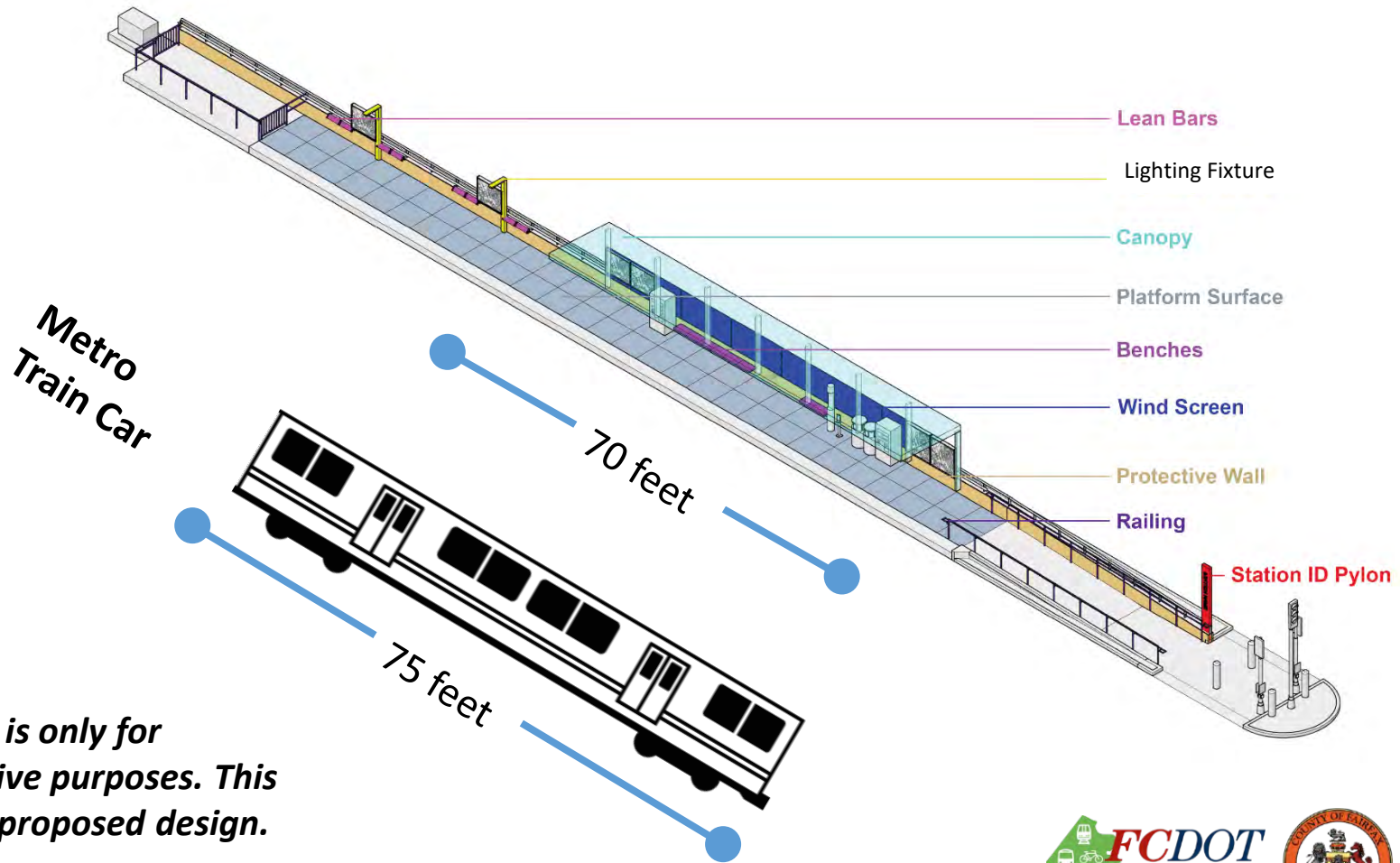
Stations are 140 feet long, and the canopy is about 70 feet long and at least 13.5 feet above the platform.



Graphic is only for illustrative purposes. This is not a proposed design.

Station Characteristics

The covered platform area (70 feet) is nearly the length of a Metro train car (75 feet).



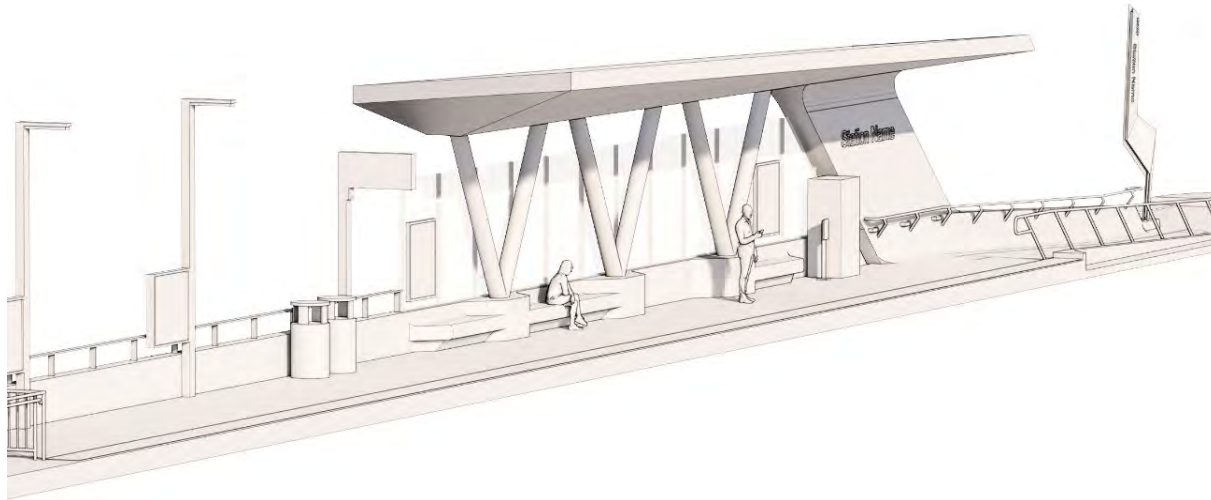
Graphic is only for illustrative purposes. This is not a proposed design.

Station Architecture

Concept 1

Station Design Concept 1

- **Incorporates theme elements of Aviation, History, and Ecology**
 - **Aviation:** Dynamic shapes and materials reflect the ideals of movement and connection.
 - **History:** The shape of the canopy references the aviation and military history of the corridor by resembling an airplane wing.
 - **Ecology:** Organic form rising from the ground, station materiality and how new development can both respect and restore the natural environment.



**Station Design Concept 1
Fall 2020**

Richmond Highway BRT

fairfaxcounty.gov/transportation/richmond-hwy-brt

Station Design Concept 1

The shape of the canopy resembles an airplane wing

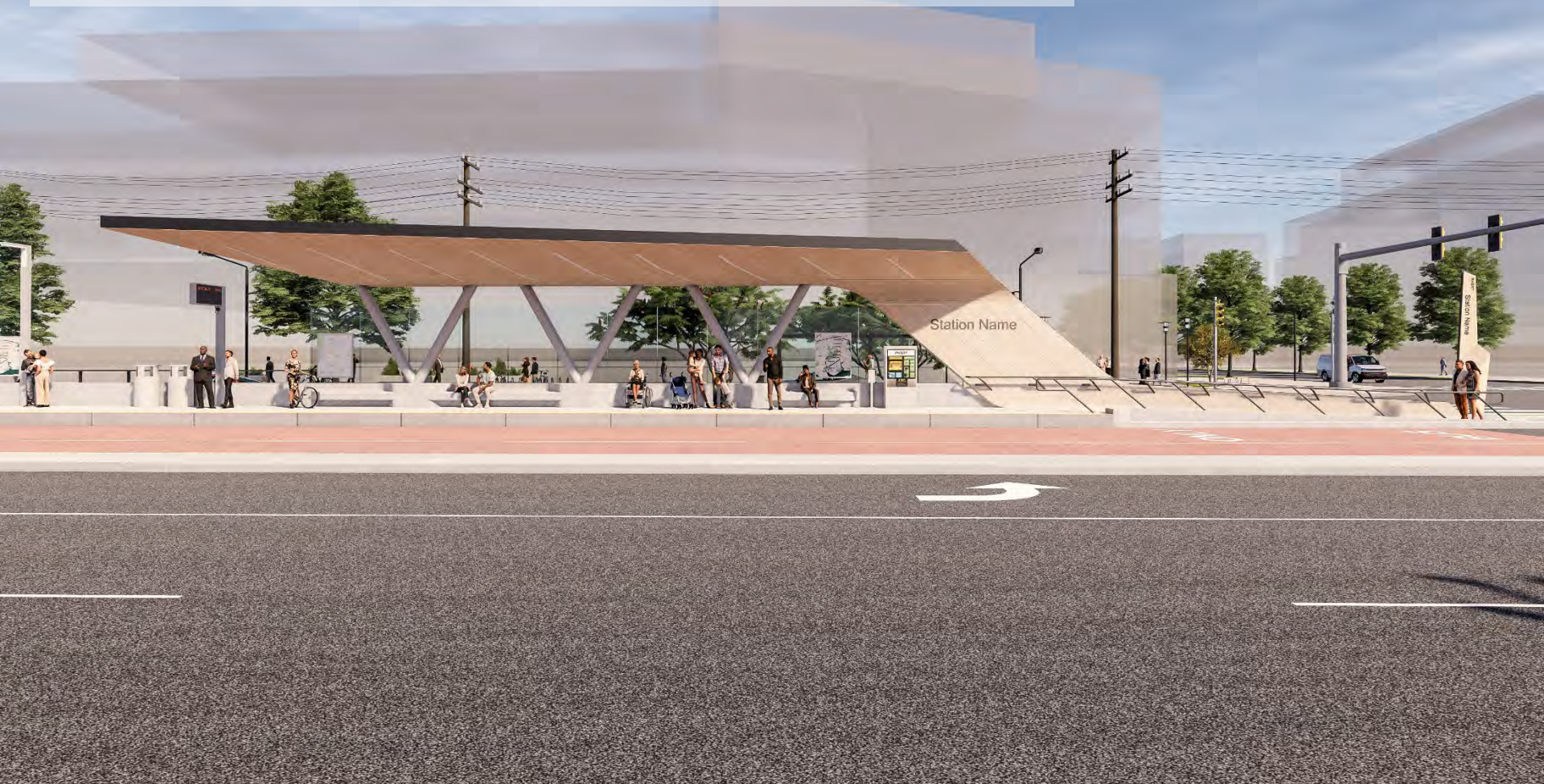


This is a draft station design concept. Elements outside of the station area are shown for context only and are not intended for review as part of the concept.

Richmond Highway Bus Rapid Transit

Station Design Concept 1

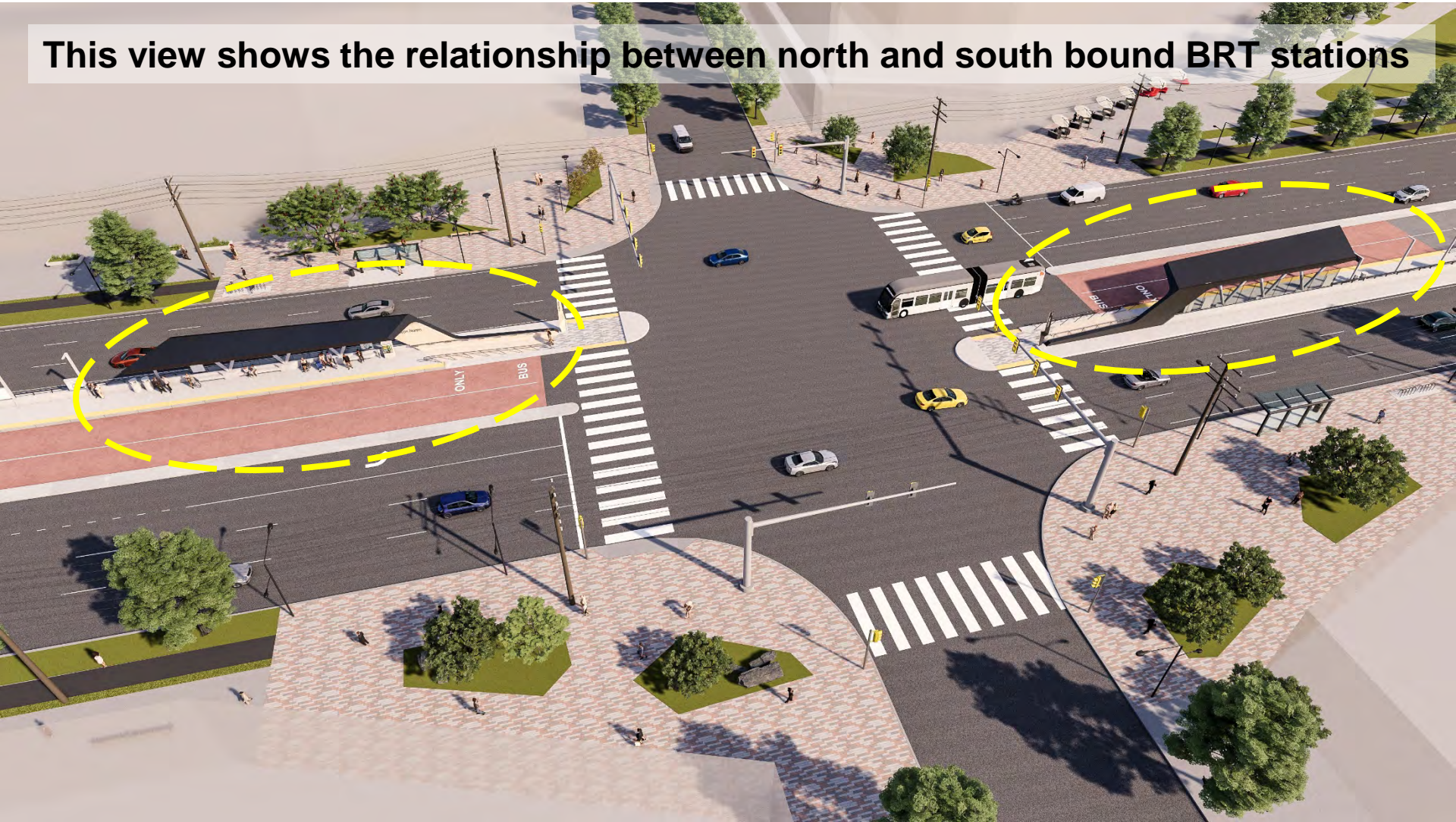
The structure of the station is light and open



This is a draft station design concept. Elements outside of the station area are shown for context only and are not intended for review as part of the concept.

Station Design Concept 1

This view shows the relationship between north and south bound BRT stations



This is a draft station design concept. Elements outside of the station area are shown for context only and are not intended for review as part of the concept.

Station Design Concept 1

Railings guide passengers into the station



This is a draft station design concept. Elements outside of the station area are shown for context only and are not intended for review as part of the concept.

Station Design Concept 1



Windscreens will provide protection from the elements and opportunities to add maps and other signage

This is a draft station design concept. Elements outside of the station area are shown for context only and are not intended for review as part of the concept.

Station Design Concept 1

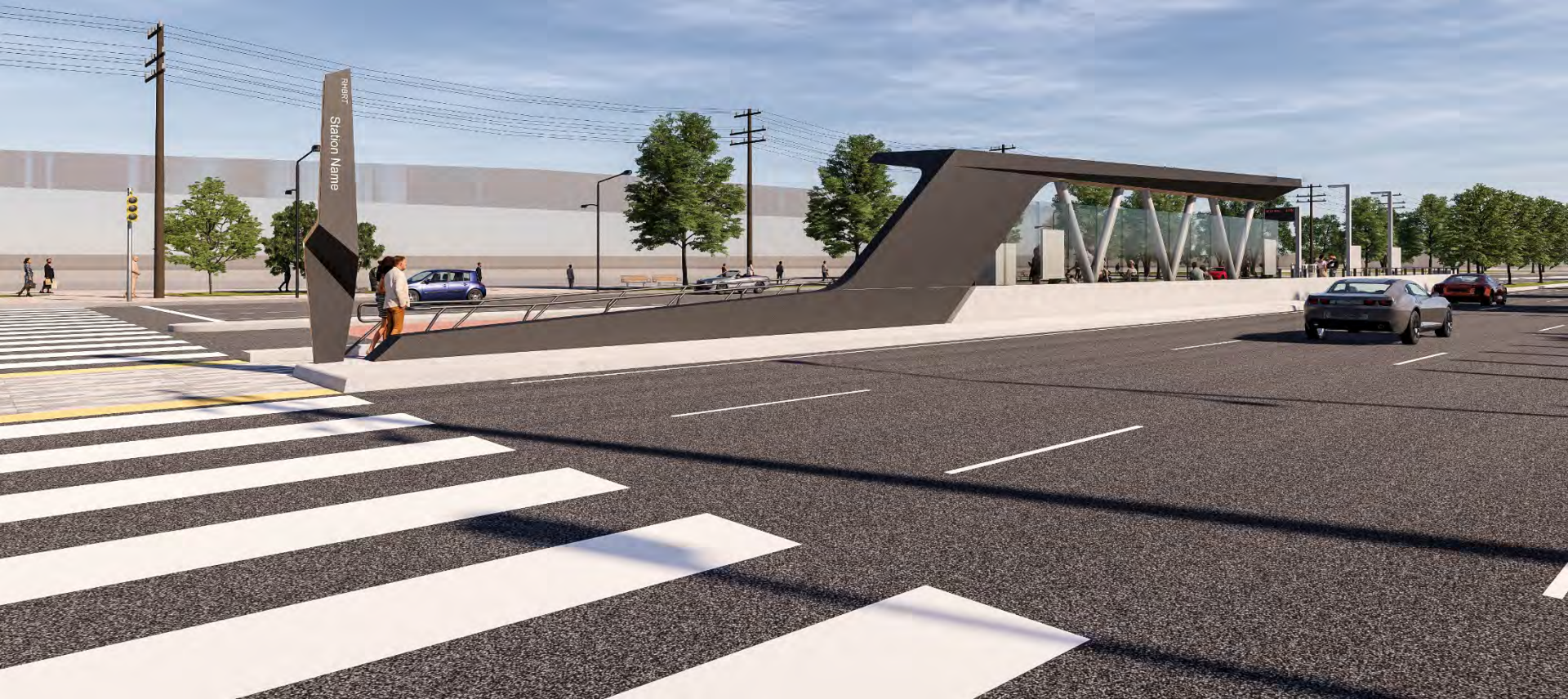


The station platform is wide enough to accommodate comfortable circulation for all passengers

This is a draft station design concept. Elements outside of the station area are shown for context only and are not intended for review as part of the concept.

Station Design Concept 1

This is the view from the sidewalk, with the sample station identifier shown near the entrance



This is a draft station design concept. Elements outside of the station area are shown for context only and are not intended for review as part of the concept.

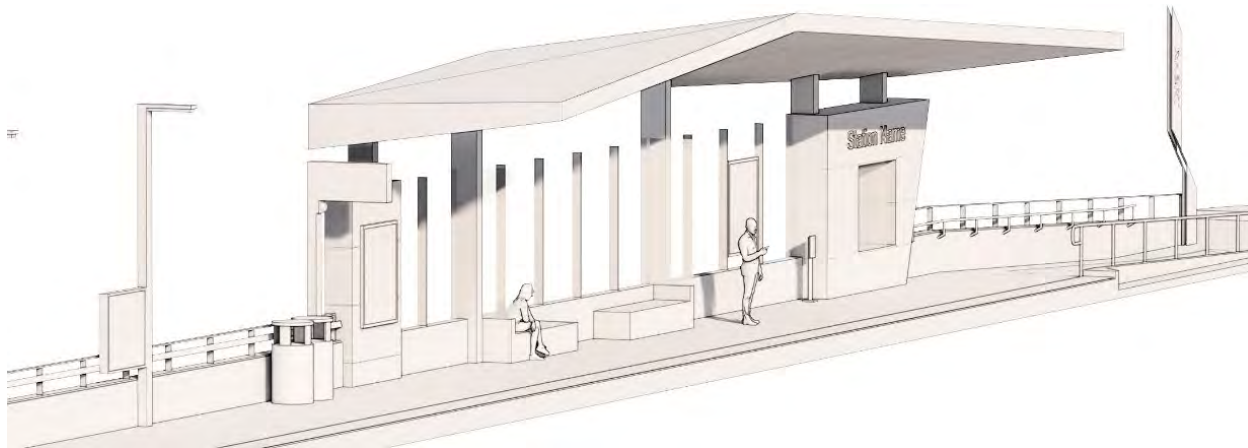
Richmond Highway Bus Rapid Transit

Station Architecture

Concept 2

Station Design Concept 2

- **Incorporates theme elements of Gateway and History**
 - **History:** Peak-roofed structure.
 - **Gateway:** Simple (yet iconic) forms, bold lighting/signage.



**Station Design Concept 2
Fall 2020**

Richmond Highway BRT

fairfaxcounty.gov/transportation/richmond-hwy-brt

Station Design Concept 2

The shape of the canopy resembles a peaked roof or a porch



This is a draft station design concept. Elements outside of the station area are shown for context only and are not intended for review as part of the concept.

Richmond Highway Bus Rapid Transit



Station Design Concept 2

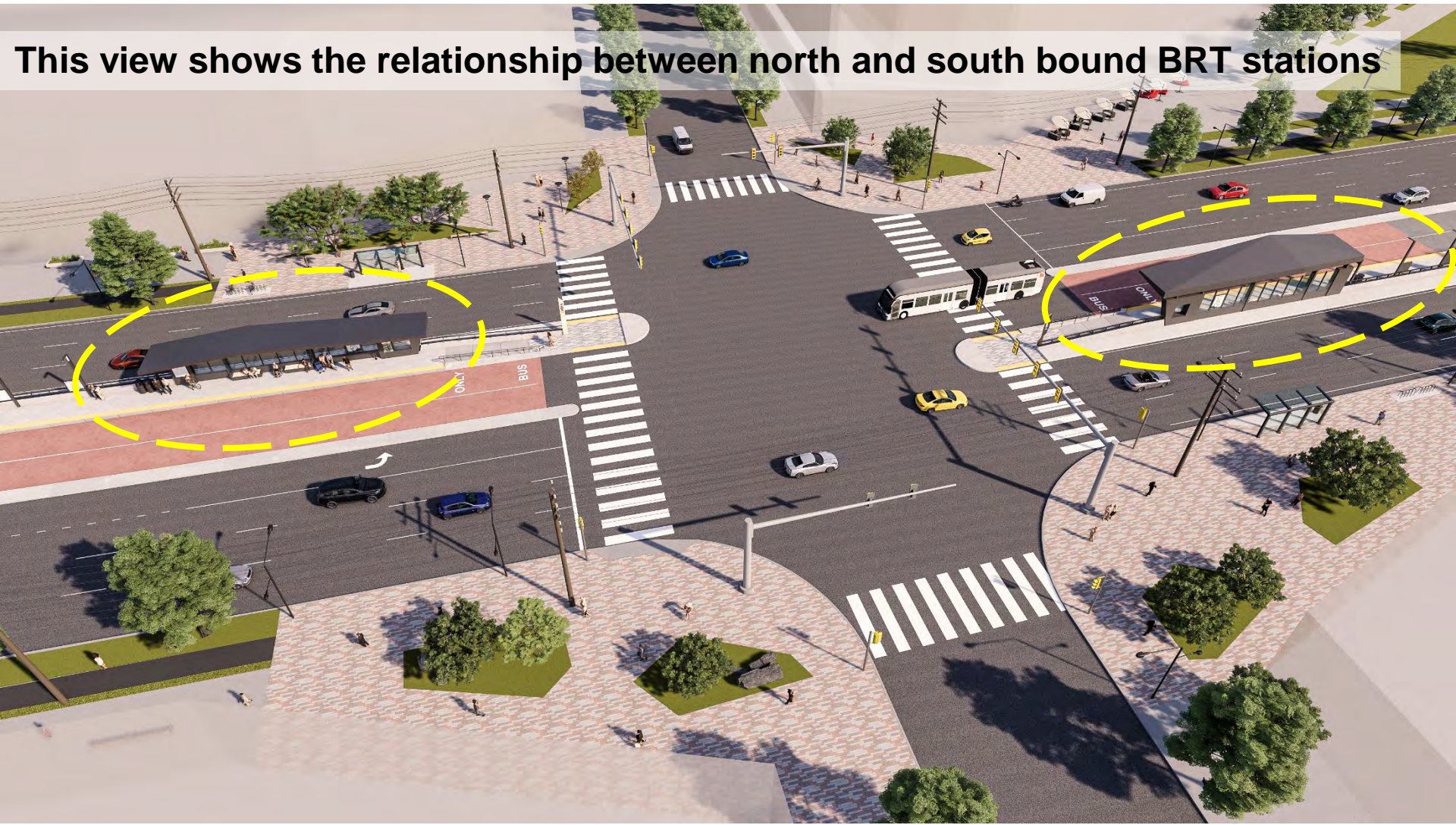
The station structure is bold, resembling some of the mid-century homes in the corridor area



This is a draft station design concept. Elements outside of the station area are shown for context only and are not intended for review as part of the concept.

Station Design Concept 2

This view shows the relationship between north and south bound BRT stations



This is a draft station design concept. Elements outside of the station area are shown for context only and are not intended for review as part of the concept.

Station Design Concept 2

Railings guide passengers into the station



This is a draft station design concept. Elements outside of the station area are shown for context only and are not intended for review as part of the concept.

Station Design Concept 2

Windscreens will provide protection from the elements and opportunities to add maps and other signage



This is a draft station design concept. Elements outside of the station area are shown for context only and are not intended for review as part of the concept.

Richmond Highway Bus Rapid Transit

Station Design Concept 2



The station platform is wide enough to accommodate comfortable circulation for all passengers

This is a draft station design concept. Elements outside of the station area are shown for context only and are not intended for review as part of the concept.

Station Design Concept 2

This is the view from the sidewalk, with the sample station identifier shown near the entrance



This is a draft station design concept. Elements outside of the station area are shown for context only and are not intended for review as part of the concept.

Richmond Highway Bus Rapid Transit

Concept Summary

- **Please complete the survey** to tell us your input about the two design concepts.
- **Please share** this opportunity with others!

Survey can be found at:

fairfaxcounty.gov/transportation/richmond-hwy-brt

Concept 1



Concept 2



Station Architecture

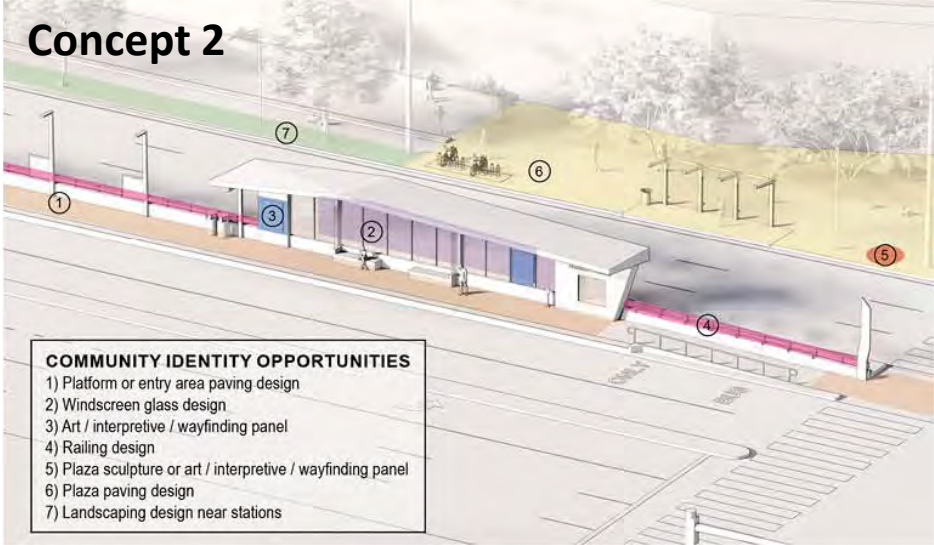
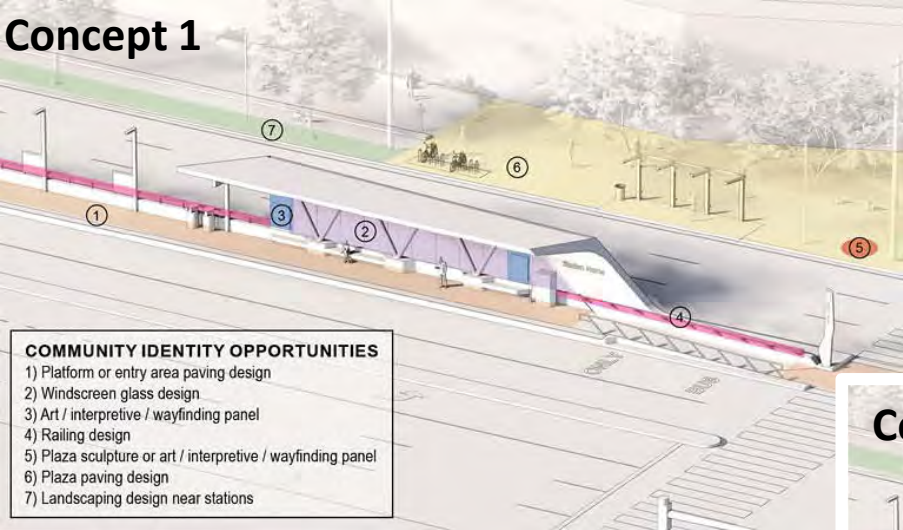
Community Identity Elements at Stations

Neighborhood "Charm" at Stations

- Though there will only be one final concept used at all nine BRT stations, there are spaces in both concepts to **incorporate the history and characteristics of the neighborhoods** surrounding each station area.
- These **potential community identity components are not currently shown** on the two concepts.



Neighborhood “Charm” – Potential Locations



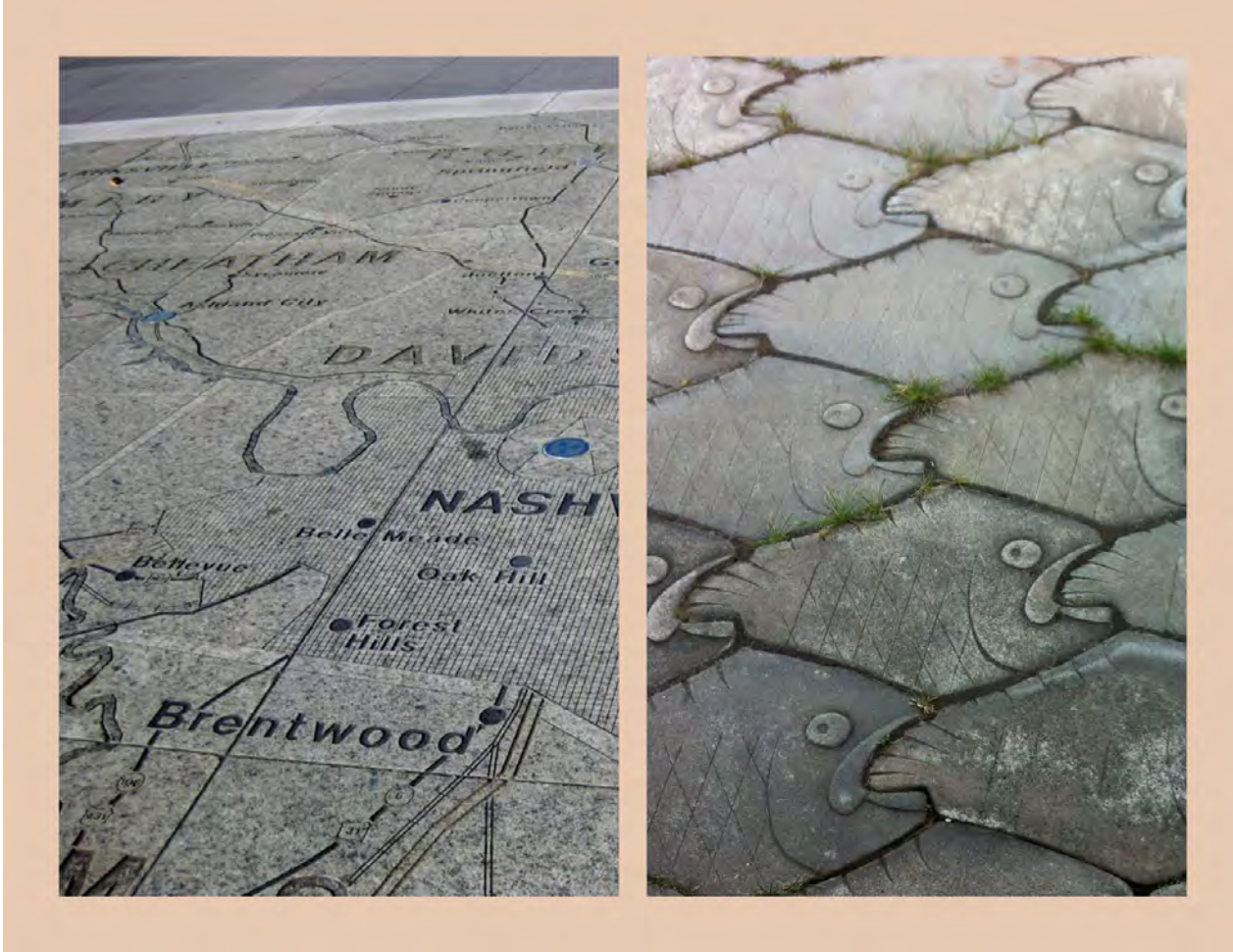
Neighborhood “Charm” – Potential Locations



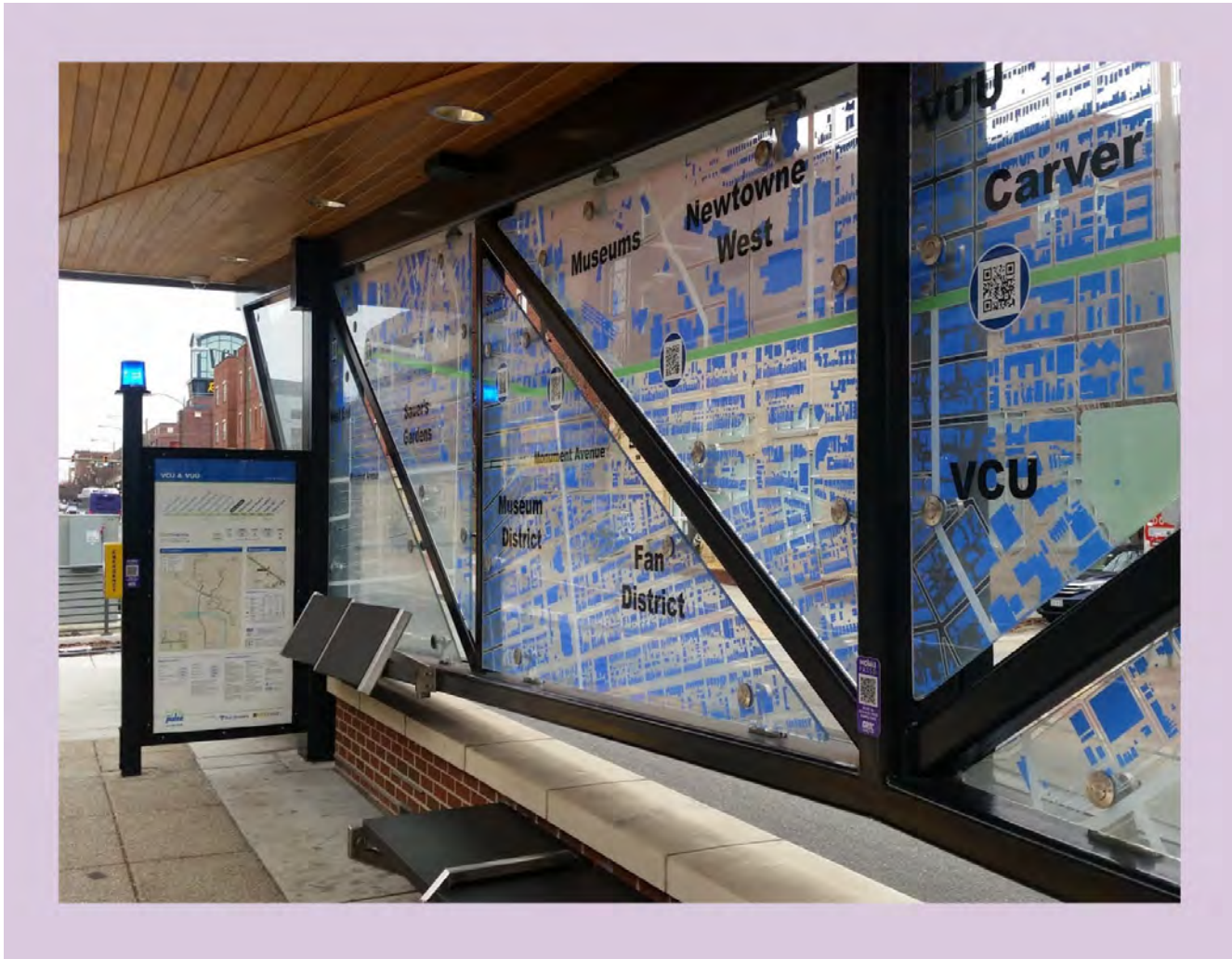
Community identity components can be found in approximately the same locations on both station concepts.

Examples of Community Identity Elements

Platform or entry area paving design



Windscreen glass design



Panel with art, interpretive, or wayfinding elements



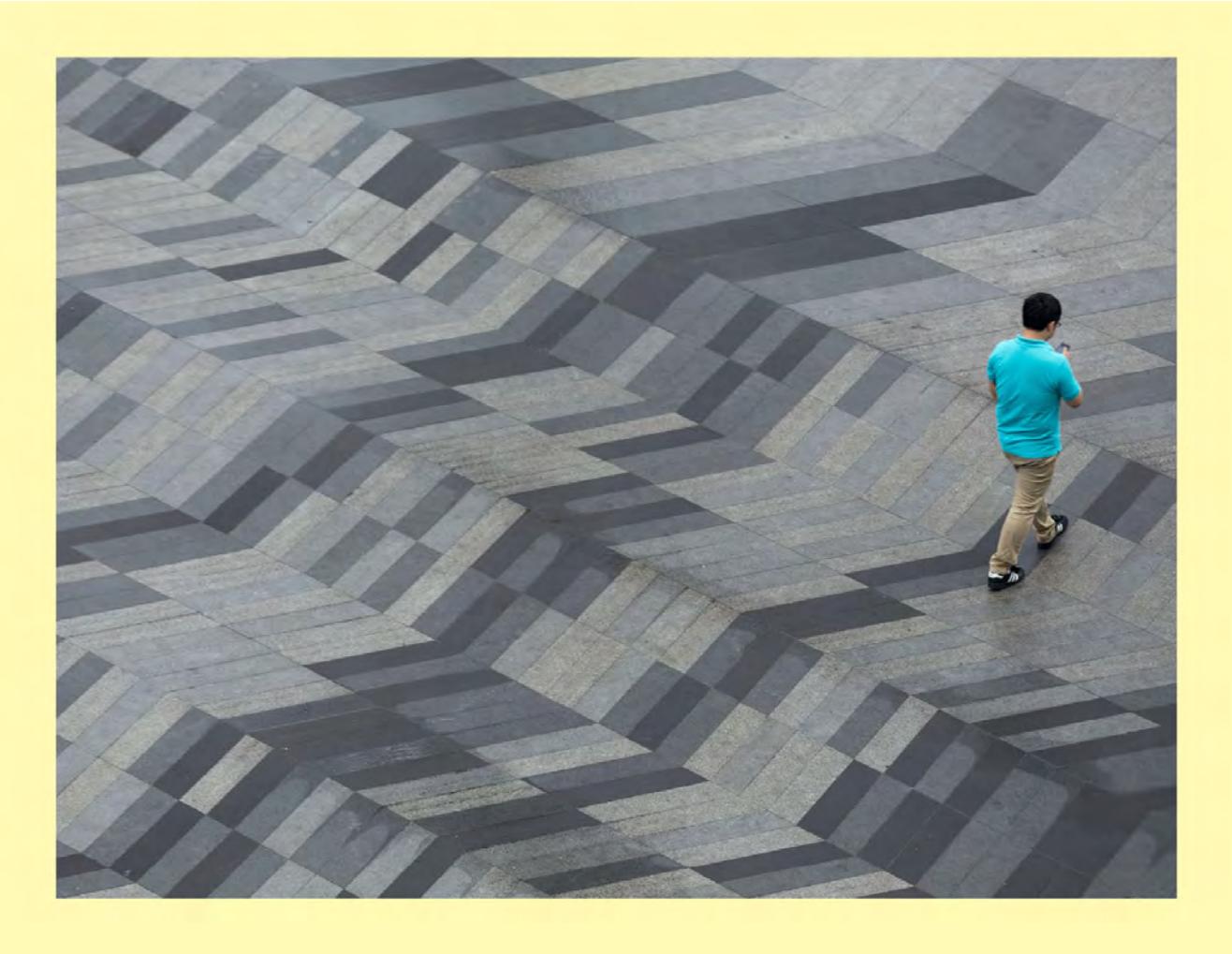
Railing design



Sculptures or panels in the plaza



Plaza paving design



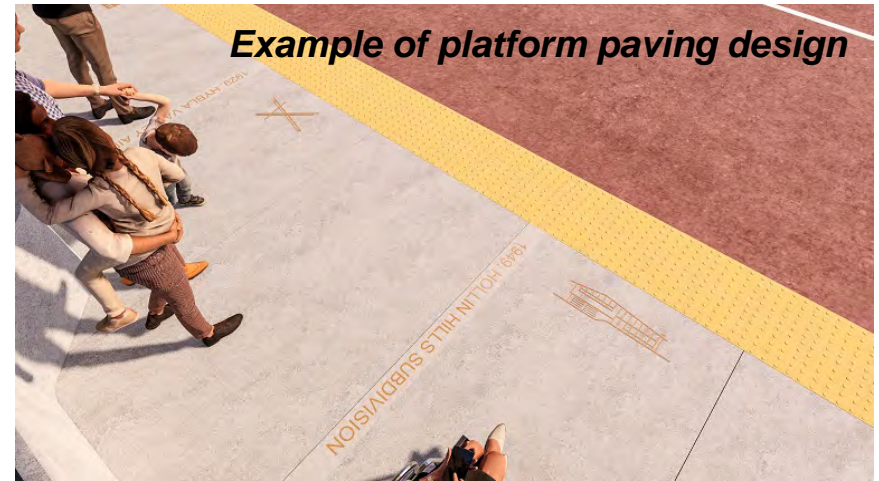
Landscaping design near stations



Examples of Neighborhood "Charm"



These are not proposed neighborhood identity concepts. These are only shown as examples of how these elements could be incorporated into the station design.



Tell us on the survey:

- **Where** should neighborhood identity elements be included at or near the station?
- **What neighborhood features** do you think should be highlighted for each station area? Please tell us on the survey!

For example, at the Penn Daw station, what neighborhood characteristics, history, or cultural elements would you like to see reflected in the station design?



Meeting Wrap-Up



Next Steps for Station Architecture

- We will summarize the input received at this meeting and in the survey.
- **This input will be shared with the County Supervisors and others on the project Executive Committee, who will make the final decision on the concept.**
- **As the final design is developed, we will incorporate elements of your input, including neighborhood identity components.**
 - There will be more opportunities to provide your input about this as the design evolves!



Reminder: We Want to Hear From You!

Please complete the survey to tell us...

1. Station Concepts

- Which **station concept** do you like best?
- What **features** do you like? What would you change?

2. Neighborhood “Charm” Elements

- How would you like to see the **station area neighborhood reflected in the design?**
- What **community history, culture, or amenities** would you like to see highlighted at each station?



Survey Screenshot

The survey can be found at:

fairfaxcounty.gov/transportation/richmond-hwy-brt

2. Please let us know which concept best addresses the questions below. (Choose one, both, or neither.)

	Concept 1 Only	Concept 2 Only	Both Concepts	Neither Concept
Clarity: Would you know this is a bus station if you approached it from a sidewalk?	<input type="radio"/>	<input type="radio"/>	<input type="radio"/>	<input type="radio"/>
Colors: Do you like the colors used in the design for each station?	<input type="radio"/>	<input type="radio"/>	<input type="radio"/>	<input type="radio"/>
Shape/form: Which canopy shape do you like best?	<input type="radio"/>	<input type="radio"/>	<input type="radio"/>	<input type="radio"/>
Scale: Do you like the overall size/scale of the station architecture?	<input type="radio"/>	<input type="radio"/>	<input type="radio"/>	<input type="radio"/>
Safety: Which concept feels more safe to you, as a potential BRT rider?	<input type="radio"/>	<input type="radio"/>	<input type="radio"/>	<input type="radio"/>
Comfort: Which concept feels more comfortable for all users?	<input type="radio"/>	<input type="radio"/>	<input type="radio"/>	<input type="radio"/>



Landscaping design near stations



Platform paving design



Plaza art/sculpture or panel



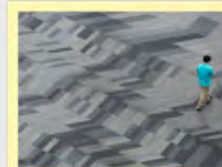
Art / interpretive panel



Railing design



Windscreen design



Plaza paving design

Questions

Contact Information

- **Website:**

Website: fairfaxcounty.gov/transportation

Key words: Richmond Highway BRT

- **Email:** DOTBRT@fairfaxcounty.gov
- **Send comments/questions by mail to:** Fairfax County Department of Transportation, Richmond Highway BRT Project Manager, 4050 Legato Road, Fairfax, VA 22033.

Thank you for your input!

To ask a Question Now

Please use the WebEx “Q&A” feature:

- Open the “Q&A” window.
- Type in your question.

If calling in via telephone:

- Press *3 to "raise your hand" and to be added to the queue.

We will respond first to station design questions and discuss other questions as time allows.



Extra Slides

Station Design Concept 2

The shape of the canopy resembles a peaked roof or a porch



This is a draft station design concept. Elements outside of the station area are shown for context only and are not intended for review as part of the concept.



Station Design Concept 1

The shape of the canopy resembles an airplane wing



This is a draft station design concept. Elements outside of the station area are shown for context only and are not intended for review as part of the concept.

Richmond Highway Bus Rapid Transit