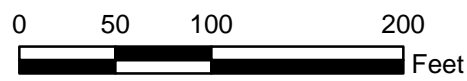




MATCH LINE - SEE FIGURE 2

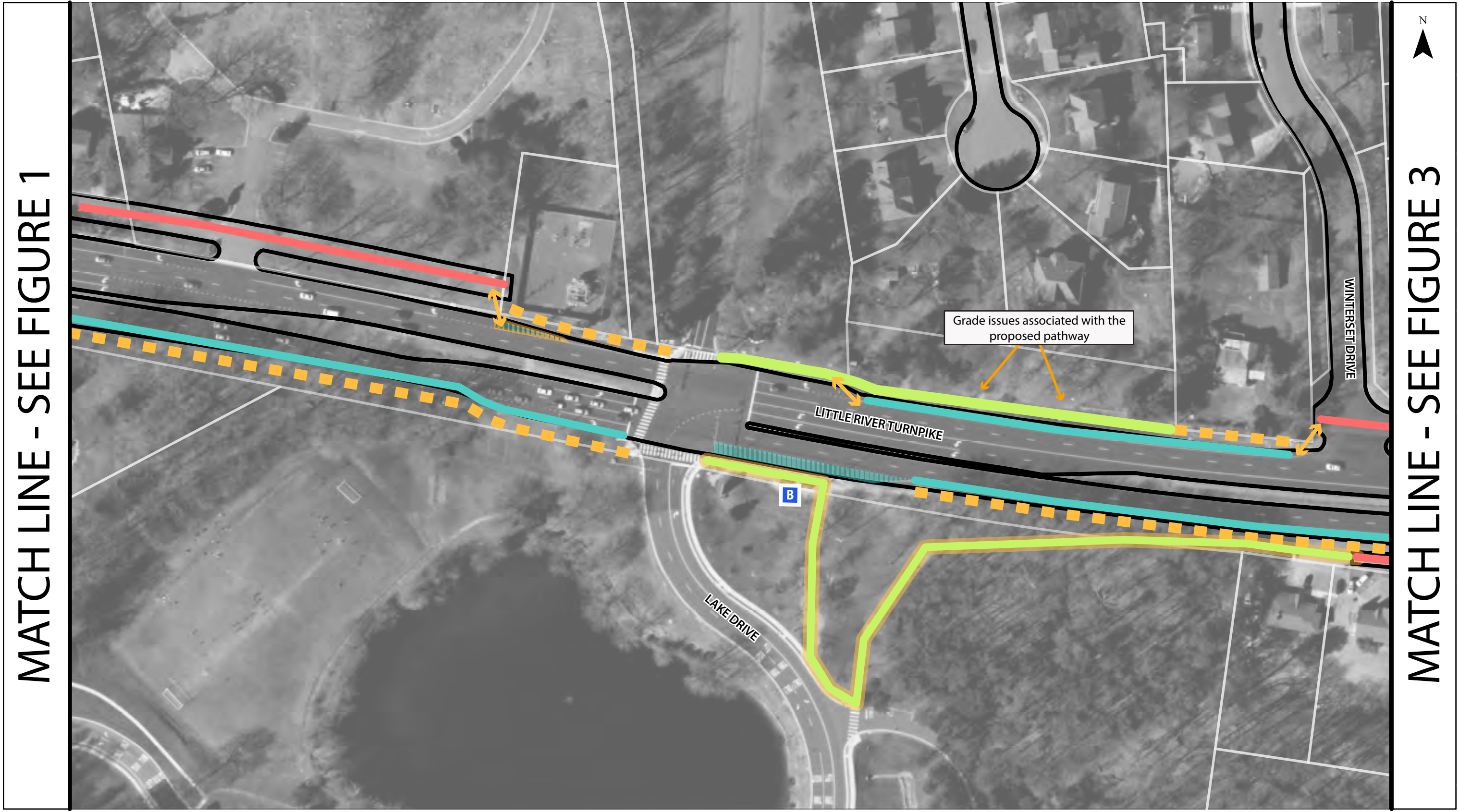


- | | | |
|---|--|---|
| Existing Conditions | Recommendations | Recommendations |
| ■ Bus Stop | — Stop bar | ↔ Transition/connection |
| Parcel Lines | ○ Wayfinding | — Use existing sidewalk/trail |
| Edge of Pavement | ○ Remove barrier/splitter island | — Shoulder enhancements, including widening |
| Shoulder | — High-visibility crosswalk | — Frontage Road Enhancements (pavement markings and signage) |
| Bike Lane | — New 10' shared-use pathway | — Stripe right turn/acceleration lane as shoulder |
| | — Widen existing sidewalk/trail | — Expand/modify existing curb |

**Recommended Alternatives
Little River Turnpike Bicycle Corridor
Fairfax County, Virginia**

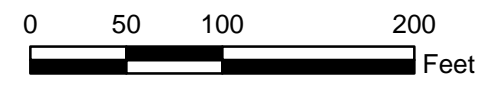
Figure 1

H:\profiles\19829 - Little River Turnpike Bicycle Corridor Study\gis\basemap.mxd - msanders - 10:59 AM 3/29/2016



MATCH LINE - SEE FIGURE 1

MATCH LINE - SEE FIGURE 3

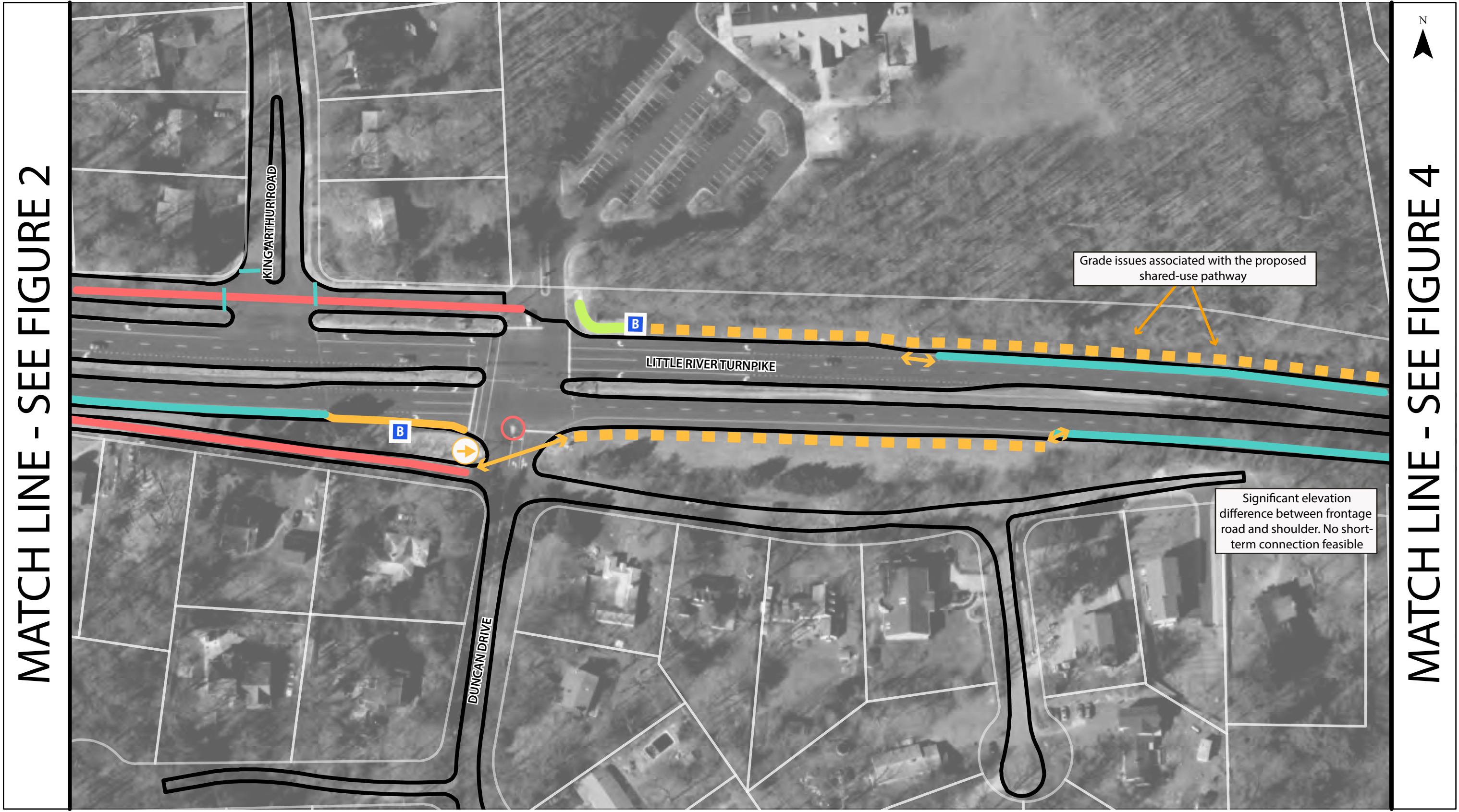


- | | | |
|----------------------------|--------------------------------|--|
| Existing Conditions | Recommendations | Recommendations |
| Bus Stop | Stop bar | Transition/connection |
| Parcel Lines | Wayfinding | Use existing sidewalk/trail |
| Edge of Pavement | Remove barrier/splitter island | Shoulder enhancements, including widening |
| Shoulder | High-visibility crosswalk | Frontage Road Enhancements (pavement markings and signage) |
| Bike Lane | New 10' shared-use pathway | Stripe right turn/acceleration lane as shoulder |
| | Widen existing sidewalk/trail | Expand/modify existing curb |

Recommended Alternatives
Little River Turnpike Bicycle Corridor
Fairfax County, Virginia

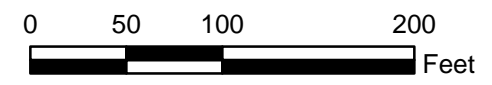
Figure 2

H:\profiles\19829 - Little River Turnpike Bicycle Corridor Study\gis\basemap.mxd - msanders - 10:59 AM 3/29/2016



MATCH LINE - SEE FIGURE 2

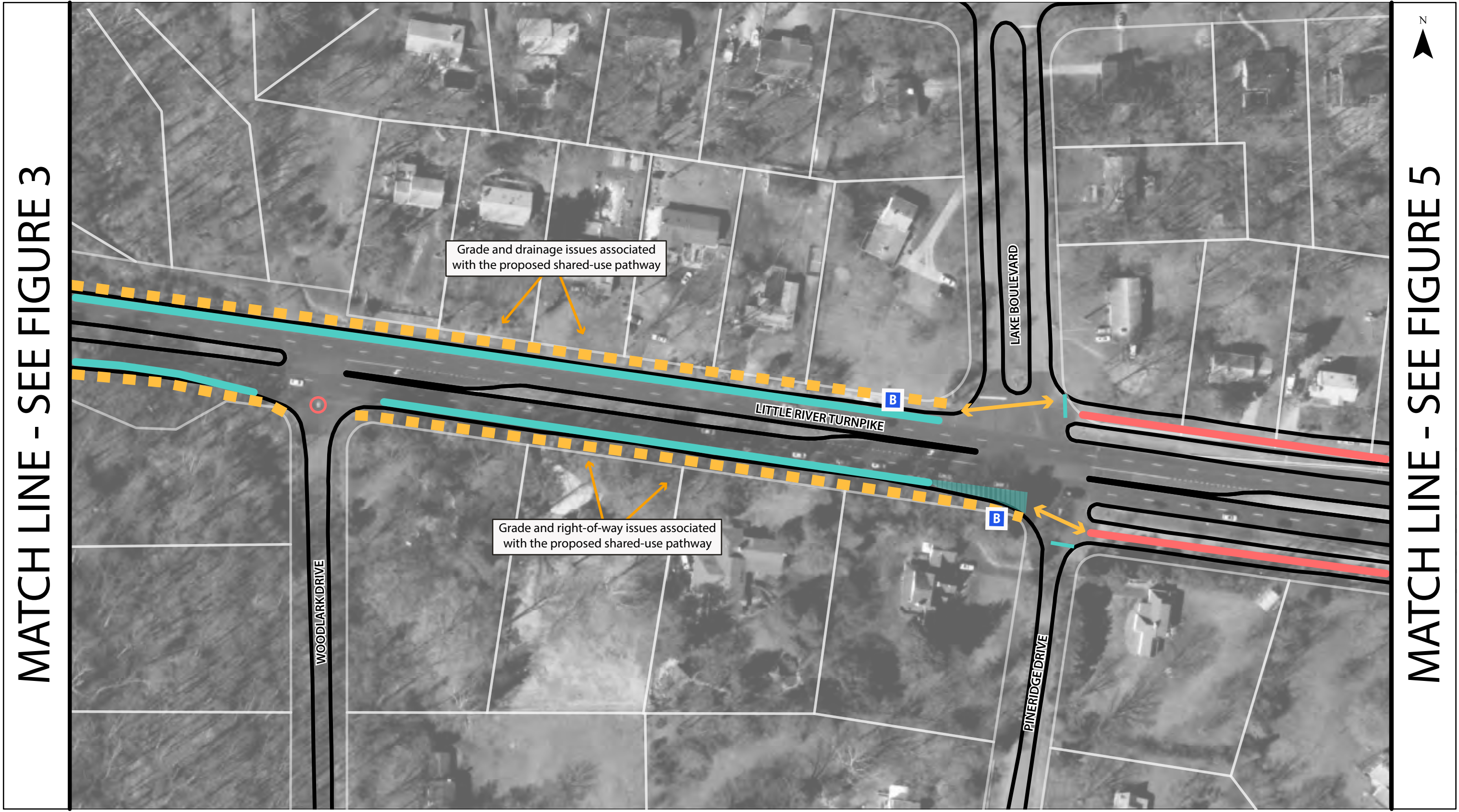
MATCH LINE - SEE FIGURE 4



- | | | |
|---|---|---|
| Existing Conditions | Recommendations | Recommendations |
| ■ Bus Stop | — Stop bar | ↔ Transition/connection |
| Parcel Lines | ○ Wayfinding | — Use existing sidewalk/trail |
| Edge of Pavement | ○ Remove barrier/splitter island | — Shoulder enhancements, including widening |
| Shoulder | High-visibility crosswalk | — Frontage Road Enhancements (pavement markings and signage) |
| Bike Lane | New 10' shared-use pathway | Stripe right turn/acceleration lane as shoulder |
| | Widen existing sidewalk/trail | Expand/modify existing curb |

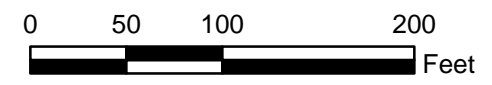
**Recommended Alternatives
Little River Turnpike Bicycle Corridor
Fairfax County, Virginia**

Figure 3



MATCH LINE - SEE FIGURE 3

MATCH LINE - SEE FIGURE 5



- | | | |
|---|---|---|
| Existing Conditions | Recommendations | Recommendations |
| ■ Bus Stop | — Stop bar | ↔ Transition/connection |
| Parcel Lines | ○ Wayfinding | — Use existing sidewalk/trail |
| Edge of Pavement | ○ Remove barrier/splitter island | — Shoulder enhancements, including widening |
| Shoulder | High-visibility crosswalk | — Frontage Road Enhancements (pavement markings and signage) |
| Bike Lane | New 10' shared-use pathway | Stripe right turn/acceleration lane as shoulder |
| | Widen existing sidewalk/trail | Expand/modify existing curb |

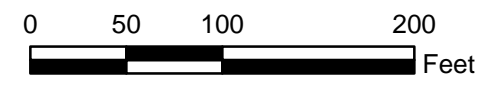
**Recommended Alternatives
Little River Turnpike Bicycle Corridor
Fairfax County, Virginia**

Figure
4



MATCH LINE - SEE FIGURE 4

MATCH LINE - SEE FIGURE 6



- | | | |
|--|---|---|
| <p>Existing Conditions</p> <ul style="list-style-type: none"> ■ Bus Stop — Parcel Lines — Edge of Pavement — Shoulder — Bike Lane | <p>Recommendations</p> <ul style="list-style-type: none"> — Stop bar ○ Wayfinding ○ Remove barrier/splitter island — High-visibility crosswalk — New 10' shared-use pathway — Widen existing sidewalk/trail | <ul style="list-style-type: none"> ↔ Transition/connection — Use existing sidewalk/trail — Shoulder enhancements, including widening — Frontage Road Enhancements (pavement markings and signage) — Stripe right turn/acceleration lane as shoulder — Expand/modify existing curb |
|--|---|---|

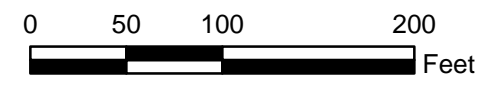
**Recommended Alternatives
Little River Turnpike Bicycle Corridor
Fairfax County, Virginia**

Figure
5



MATCH LINE - SEE FIGURE 5

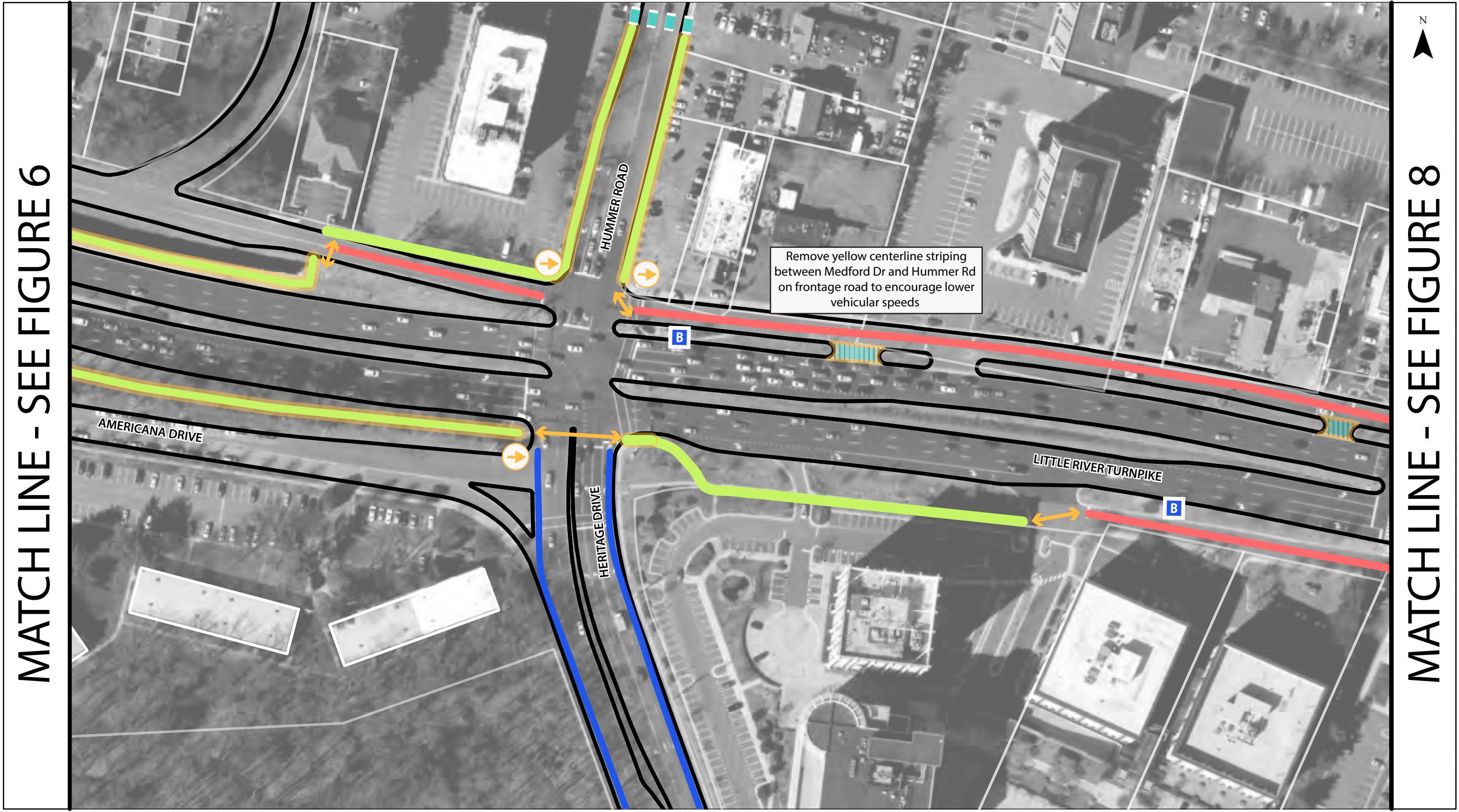
MATCH LINE - SEE FIGURE 7



- | | | |
|--|--|---|
| <p>Existing Conditions</p> <ul style="list-style-type: none"> Bus Stop Parcel Lines Edge of Pavement Shoulder Bike Lane | <p>Recommendations</p> <ul style="list-style-type: none"> Stop bar Wayfinding Remove barrier/splitter island High-visibility crosswalk New 10' shared-use pathway Widen existing sidewalk/trail | <ul style="list-style-type: none"> Transition/connection Use existing sidewalk/trail Shoulder enhancements, including widening Frontage Road Enhancements (pavement markings and signage) Stripe right turn/acceleration lane as shoulder Expand/modify existing curb |
|--|--|---|

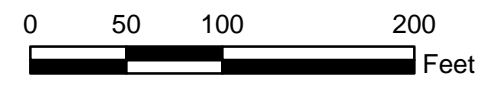
**Recommended Alternatives
Little River Turnpike Bicycle Corridor
Fairfax County, Virginia**

Figure
6



MATCH LINE - SEE FIGURE 6

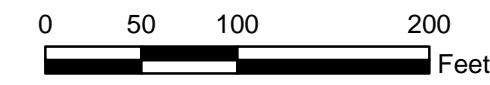
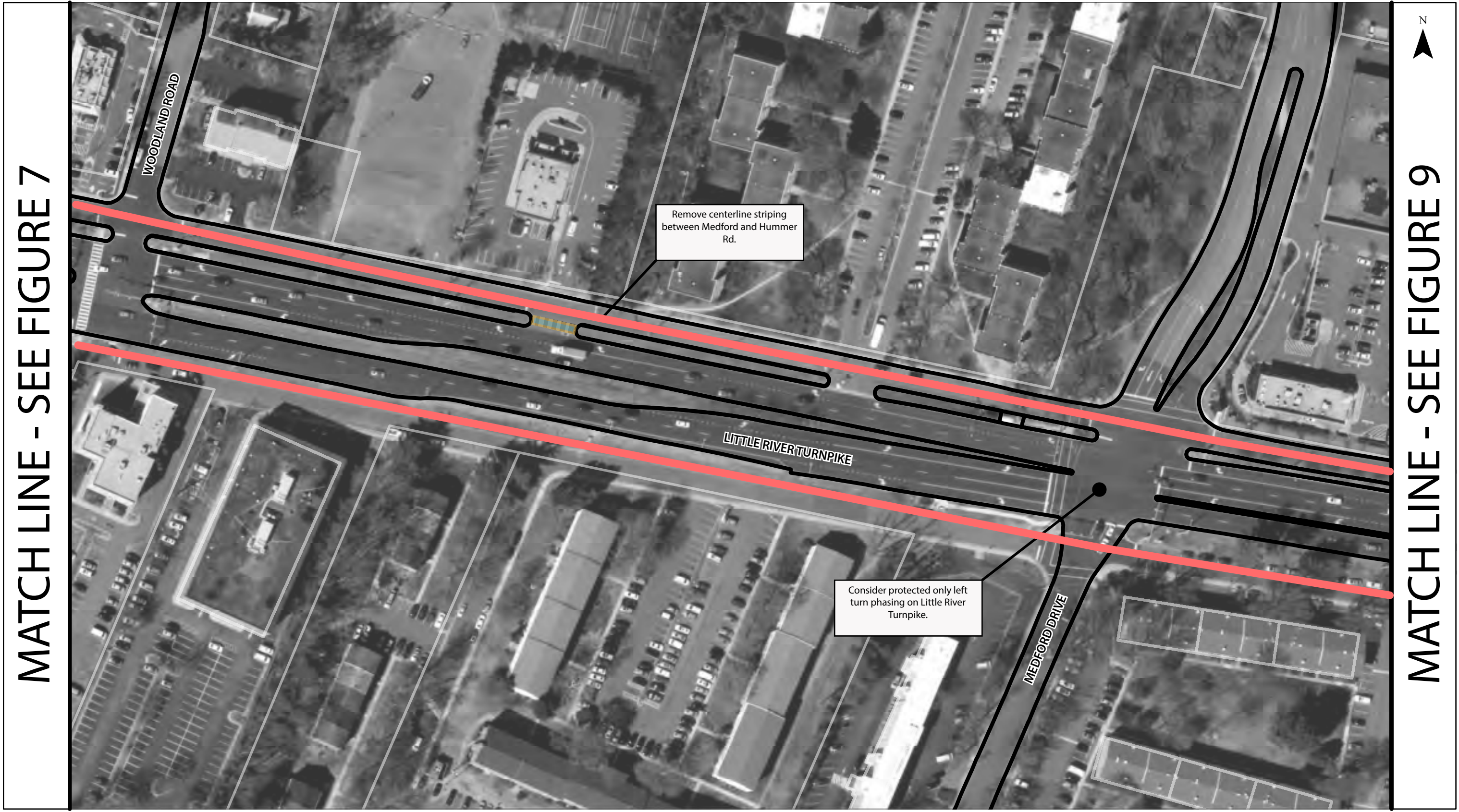
MATCH LINE - SEE FIGURE 8



- | | | |
|--|---|--|
| <p>Existing Conditions</p> <ul style="list-style-type: none"> Bus Stop Parcel Lines Edge of Pavement Shoulder Bike Lane | <p>Recommendations</p> <ul style="list-style-type: none"> Stop bar Wayfinding Remove barrier/splitter island High-visibility crosswalk New 10' shared-use pathway Widen existing sidewalk/trail | <ul style="list-style-type: none"> Transition/connection Use existing sidewalk/trail Shoulder enhancements, including widening Frontage Road Enhancements (pavement markings and signage) Stripe right turn/acceleration lane as shoulder Expand/modify existing curb |
|--|---|--|

**Recommended Alternatives
Little River Turnpike Bicycle Corridor
Fairfax County, Virginia**

Figure 7



- | | | | |
|----------------------------|--------------------------------|---|--|
| Existing Conditions | Recommendations | Recommendations | Recommendations |
| Bus Stop | Stop bar | Transition/connection | Use existing sidewalk/trail |
| Parcel Lines | Wayfinding | Shoulder enhancements, including widening | Frontage Road Enhancements (pavement markings and signage) |
| Edge of Pavement | Remove barrier/splitter island | Stripe right turn/acceleration lane as shoulder | Expand/modify existing curb |
| Shoulder | High-visibility crosswalk | Widen existing sidewalk/trail | |
| Bike Lane | New 10' shared-use pathway | | |

**Recommended Alternatives
Little River Turnpike Bicycle Corridor
Fairfax County, Virginia**

Figure
8

H:\profiles\19829 - Little River Turnpike Bicycle Corridor Study\gis\basemap.mxd - msanders - 10:59 AM 3/29/2016

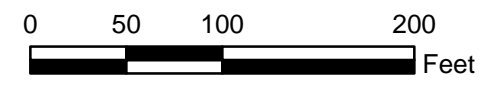


MATCH LINE - SEE FIGURE 8

MATCH LINE - SEE FIGURE 10

Consider protected only left turn phasing on Little River Turnpike.

Utility relocation and ROW aquisition may be required.

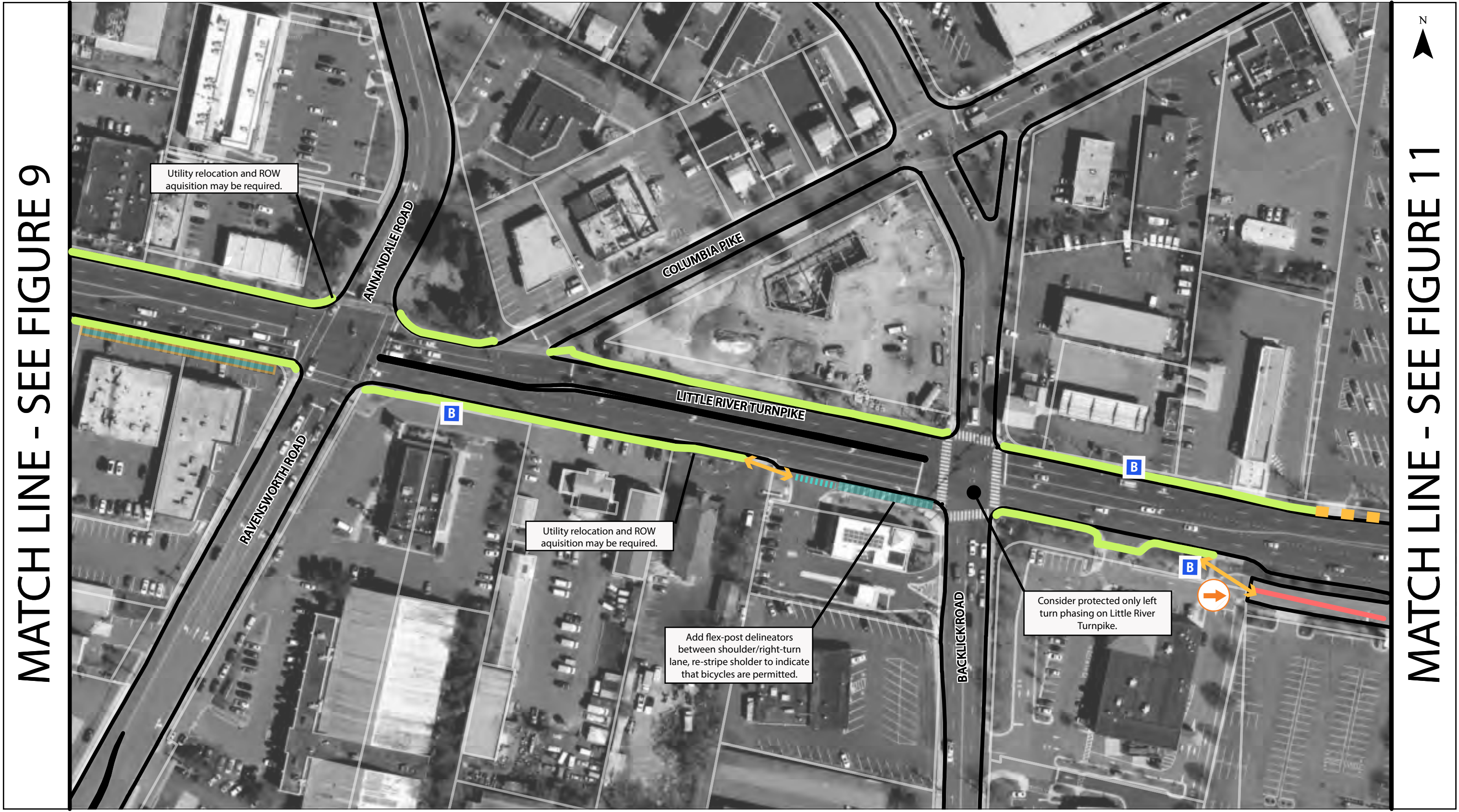


- | | | |
|----------------------------|--------------------------------|--|
| Existing Conditions | Recommendations | Recommendations |
| Bus Stop | Stop bar | Transition/connection |
| Parcel Lines | Wayfinding | Use existing sidewalk/trail |
| Edge of Pavement | Remove barrier/splitter island | Shoulder enhancements, including widening |
| Shoulder | High-visibility crosswalk | Frontage Road Enhancements (pavement markings and signage) |
| Bike Lane | New 10' shared-use pathway | Stripe right turn/acceleration lane as shoulder |
| | Widen existing sidewalk/trail | Expand/modify existing curb |

Recommended Alternatives
Little River Turnpike Bicycle Corridor
Fairfax County, Virginia

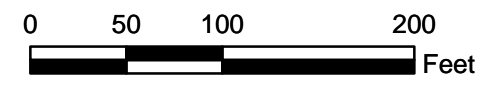
Figure 9

H:\profiles\19829 - Little River Turnpike Bicycle Corridor Study\gis\basemap.mxd - msanders - 10:59 AM 3/29/2016



MATCH LINE - SEE FIGURE 9

MATCH LINE - SEE FIGURE 11

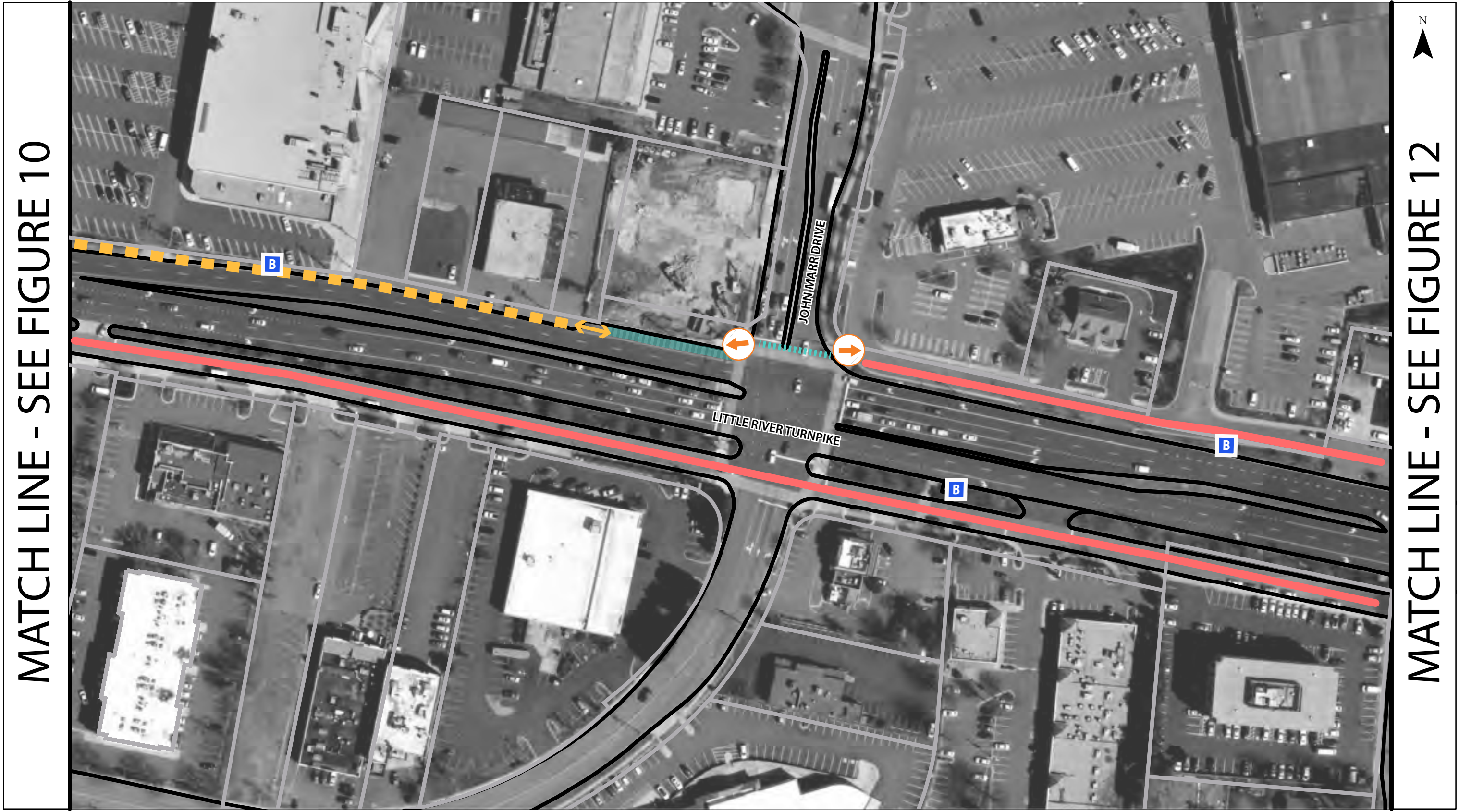


- | | | | |
|--|--|---|--|
| Existing Conditions | Recommendations | Recommendations | Recommendations |
| B Bus Stop | Stop bar | Wayfinding | Transition/connection |
| Parcel Lines | Remove barrier/splitter island | High-visibility crosswalk | Use existing sidewalk/trail |
| Edge of Pavement | New 10' shared-use pathway | Stripe right turn/acceleration lane as shoulder | Shoulder enhancements, including widening |
| Shoulder | Widen existing sidewalk/trail | Expand/modify existing curb | Frontage Road Enhancements (pavement markings and signage) |
| Bike Lane | | | Expand/modify existing curb |

**Recommended Alternatives
Little River Turnpike Bicycle Corridor
Fairfax County, Virginia**

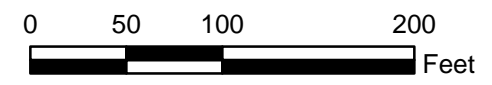
Figure 10

H:\profiles\19829 - Little River Turnpike Bicycle Corridor Study\gis\basemap.mxd - msanders - 10:59 AM 3/29/2016



MATCH LINE - SEE FIGURE 10

MATCH LINE - SEE FIGURE 12

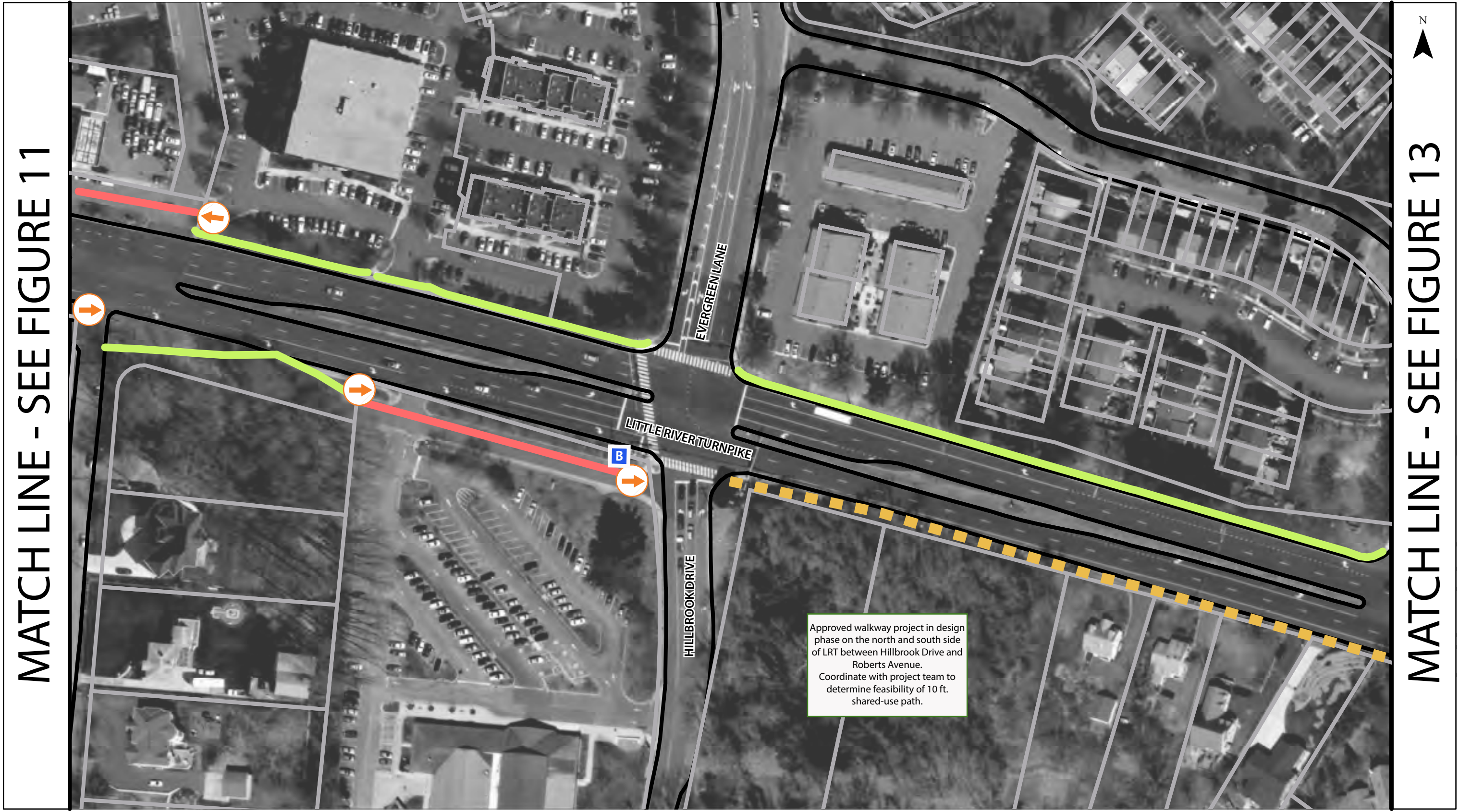


- | | | | |
|--|--|---|--|
| Existing Conditions | Recommendations | Recommendations | Recommendations |
| B Bus Stop | Stop bar | Transition/connection | Use existing sidewalk/trail |
| Parcel Lines | Wayfinding | Shoulder enhancements, including widening | Frontage Road Enhancements (pavement markings and signage) |
| Edge of Pavement | Remove barrier/splitter island | Stripe right turn/acceleration lane as shoulder | Expand/modify existing curb |
| Shoulder | High-visibility crosswalk | Widen existing sidewalk/trail | |
| Bike Lane | New 10' shared-use pathway | | |

Recommended Alternatives
Little River Turnpike Bicycle Corridor
Fairfax County, Virginia

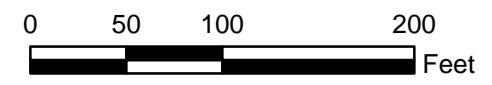
Figure
11

H:\profiles\19829 - Little River Turnpike Bicycle Corridor Study\gis\basemap.mxd - msanders - 10:59 AM 3/29/2016



MATCH LINE - SEE FIGURE 11

MATCH LINE - SEE FIGURE 13

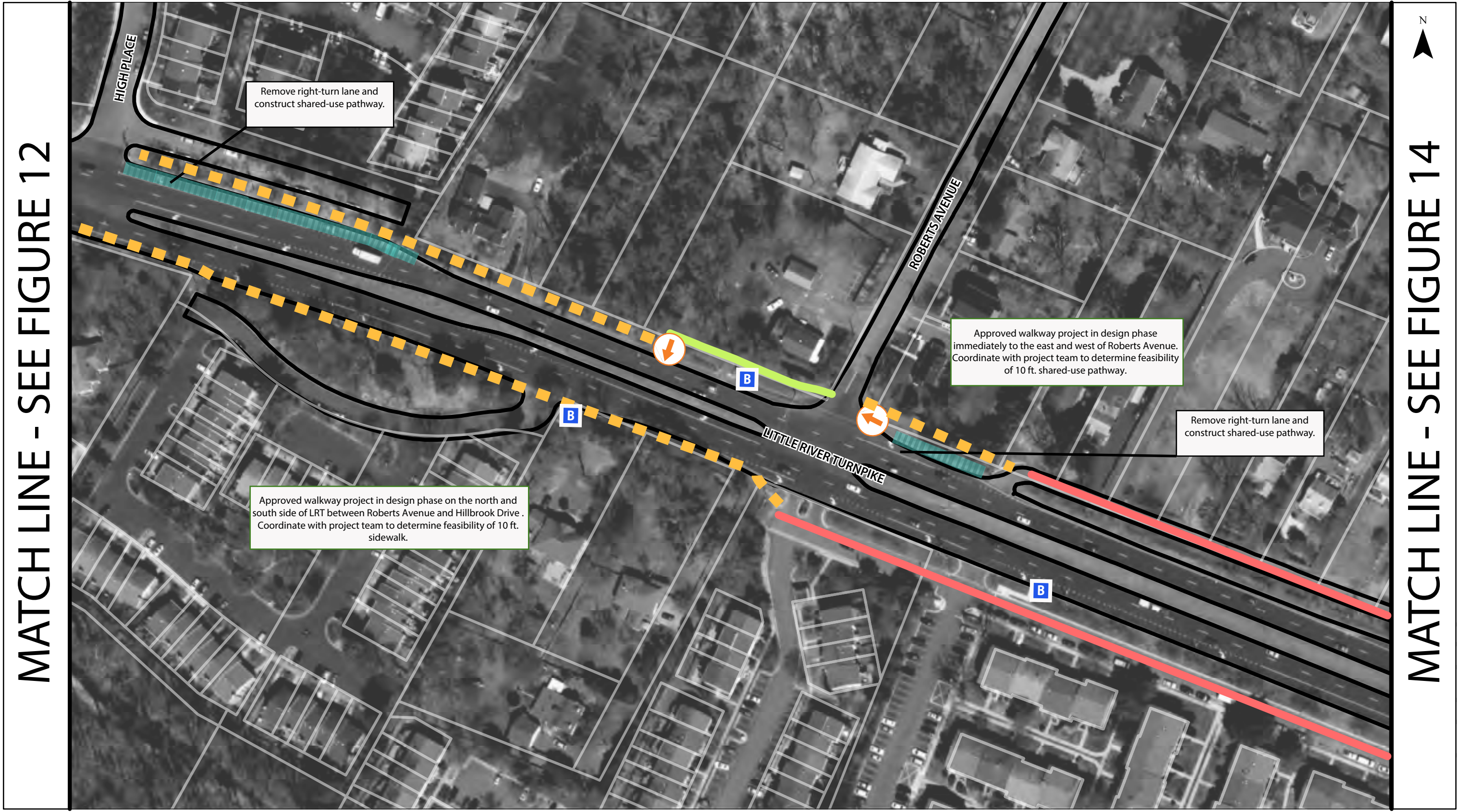


- | | | | |
|----------------------------|--------------------------------|---|--|
| Existing Conditions | Recommendations | Recommendations | Recommendations |
| Bus Stop | Stop bar | Transition/connection | Use existing sidewalk/trail |
| Parcel Lines | Wayfinding | Shoulder enhancements, including widening | Frontage Road Enhancements (pavement markings and signage) |
| Edge of Pavement | Remove barrier/splitter island | High-visibility crosswalk | Stripe right turn/acceleration lane as shoulder |
| Shoulder | New 10' shared-use pathway | Widen existing sidewalk/trail | Expand/modify existing curb |
| Bike Lane | | | |

Approved walkway project in design phase on the north and south side of LRT between Hillbrook Drive and Roberts Avenue. Coordinate with project team to determine feasibility of 10 ft. shared-use path.

**Recommended Alternatives
Little River Turnpike Bicycle Corridor
Fairfax County, Virginia**

Figure
12



MATCH LINE - SEE FIGURE 12

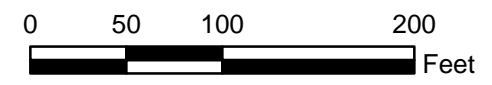
MATCH LINE - SEE FIGURE 14

Remove right-turn lane and construct shared-use pathway.

Approved walkway project in design phase immediately to the east and west of Roberts Avenue. Coordinate with project team to determine feasibility of 10 ft. shared-use pathway.

Remove right-turn lane and construct shared-use pathway.

Approved walkway project in design phase on the north and south side of LRT between Roberts Avenue and Hillbrook Drive. Coordinate with project team to determine feasibility of 10 ft. sidewalk.



- | | | |
|--|--------------------------------|--|
| Existing Conditions | Recommendations | Recommendations |
| B Bus Stop | Stop bar | Transition/connection |
| Parcel Lines | Wayfinding | Use existing sidewalk/trail |
| Edge of Pavement | Remove barrier/splitter island | Shoulder enhancements, including widening |
| Shoulder | High-visibility crosswalk | Frontage Road Enhancements (pavement markings and signage) |
| Bike Lane | New 10' shared-use pathway | Stripe right turn/acceleration lane as shoulder |
| | Widen existing sidewalk/trail | Expand/modify existing curb |

**Recommended Alternatives
Little River Turnpike Bicycle Corridor
Fairfax County, Virginia**

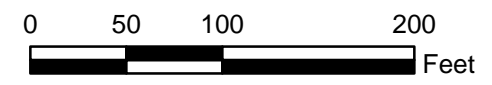
Figure 13

H:\profiles\19829 - Little River Turnpike Bicycle Corridor Study\gis\basemap.mxd - msnandens - 10:59 AM 3/29/2016



MATCH LINE - SEE FIGURE 13

MATCH LINE - SEE FIGURE 15



- | | | |
|---|---|---|
| Existing Conditions | Recommendations | Recommendations |
| B Bus Stop | Stop bar | Transition/connection |
| Parcel Lines | → Wayfinding | Use existing sidewalk/trail |
| Edge of Pavement | ○ Remove barrier/splitter island | Shoulder enhancements, including widening |
| Shoulder | High-visibility crosswalk | Frontage Road Enhancements (pavement markings and signage) |
| Bike Lane | New 10' shared-use pathway | Stripe right turn/acceleration lane as shoulder |
| | Widen existing sidewalk/trail | Expand/modify existing curb |

Recommended Alternatives
Little River Turnpike Bicycle Corridor
Fairfax County, Virginia

Figure
14

H:\profiles\19829 - Little River Turnpike Bicycle Corridor Study\gis\basemap.mxd - msanders - 10:59 AM 3/29/2016