

MOUNT VERNON DISTRICT 2019 PAVING & RESTRIPIING

Public Information Meeting

March 28, 2019 6.30 pm



Presenters: Allison Richter, VDOT and Chris Wells, FCDOT



AGENDA

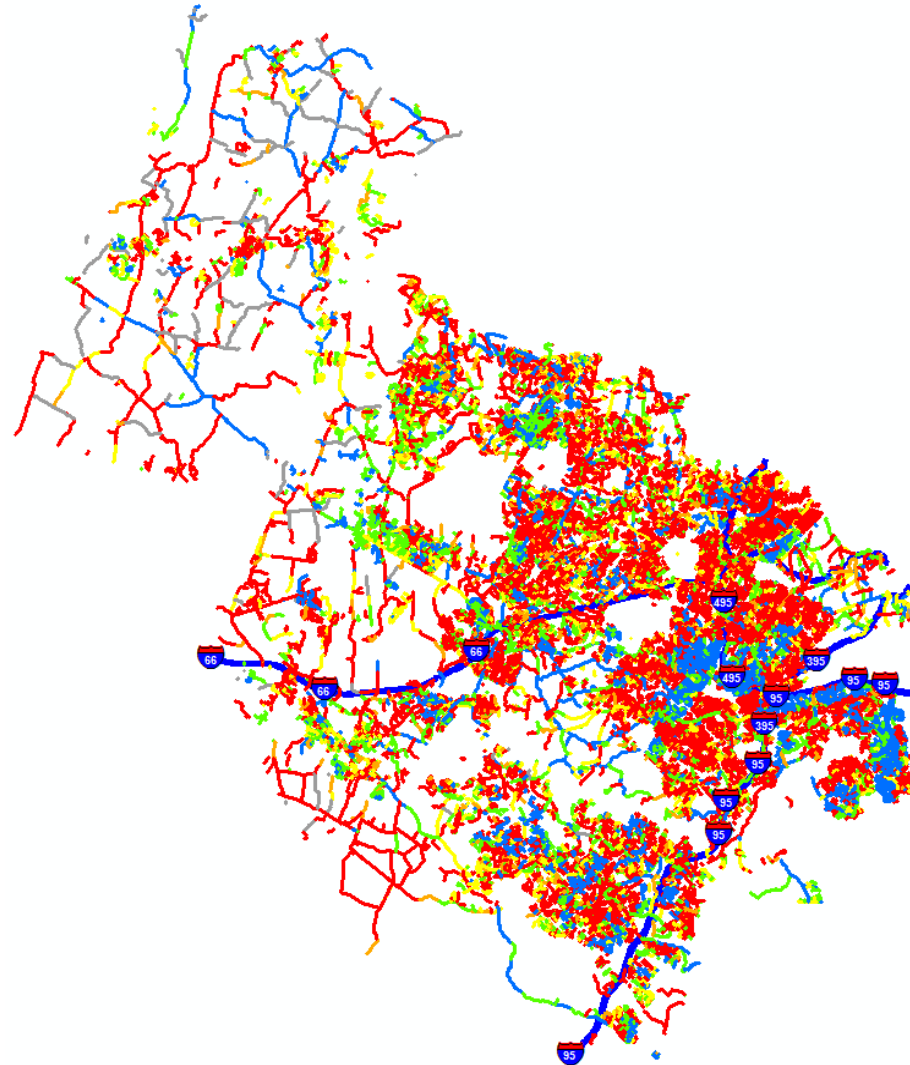
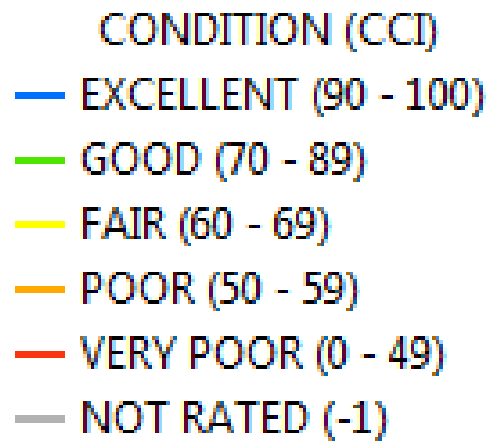
- VDOT Paving Program Overview
- Proposed Striping Modifications
- Pedestrian Safety
- Q&A



VDOT Paving Program Overview



NOVA DISTRICT PAVEMENT CONDITION RATINGS 2018



PAVING ALLOCATIONS FOR NOVA DISTRICT 2013-2019

	Interstate	Primary	Secondary	Total
Fiscal Year	(\$M)	(\$M)	(\$M)	(\$M)
FY 2013	9.4	21.9	26.8	58.1
FY 2014	22	17.3	44	83.3
FY 2015	6.9	14.8	114.1	135.8
FY 2016	7.8	23.9	107.2	138.9
FY 2017	9.4	21	104.9	135.3
FY 2018	14.2	16.1	110.6	140.9
FY 2019	9.6	15.6	80.7	105.9
Total 2013-2019	79.3	130.6	588.3	798.2



2013-2019 NOVA DISTRICT REPAVING FACTS

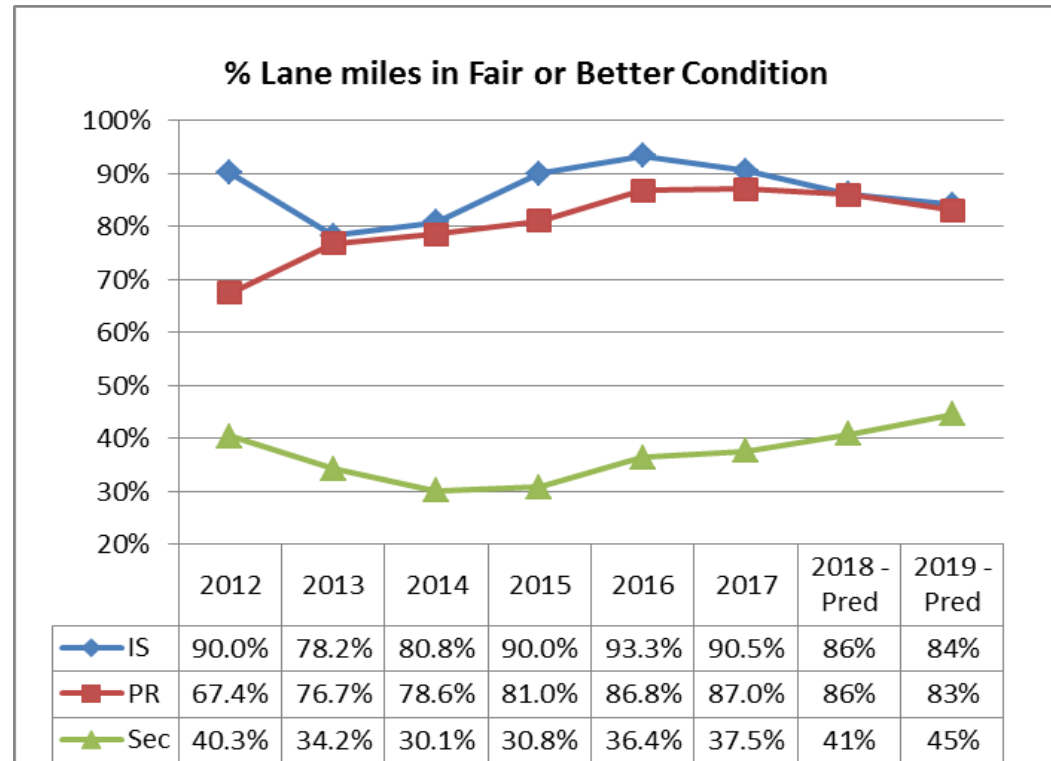
2013-2019 (Fairfax - Arlington)	Interstate	Primary	Secondary	Total
Total Expended 2013-2019, \$M	\$79	\$130	\$588	\$798
Lane Miles Paved, (Fairfax + Arlington)	213	330	2,879	3,422
Total Lane Miles Inventory (Arlington + Fairfax)	511	912	5,597	7,021
Total Lane Miles Inventory (NOVA District)	727	1,736	11,122	13,585
% of Network Paved in	42%	36%	51%	49%
Past 7 Years (Fairfax + Arlington)				



PAVEMENT CONDITIONS

Northern Virginia District: May 2018

Targets: Interstate 82%; Primary 82%;
Secondary 65%



HOW ARE ROADS SELECTED FOR PAVING?

Some Factors that Affect Paving Selections:

- Pavement Condition
- Traffic Volume
- Whole Neighborhoods versus Paving Main Streets Only
- Economies of Scale/Mobilization Costs
- Feedback from Maintenance Crews



TYPES OF TREATMENT

Preventive Maintenance

- Slurry Seal/Latex/Chip Seal
- Patching (not extensive)
- Crack Seal

Plant Mix (Corrective Maintenance)

- Mill less than 2 inches
- Overlay less than 2 inches of Surface Mix Asphalt
- Patching

Plant Mix (Restorative Maintenance)

- Mill greater than 2 inches less than 4 inches
- Overlay 2 inches of Intermediate Mix Asphalt
- Overlay < 2 inches of Surface Mix Asphalt

Full Depth Reclamation (FDR)

- Existing Asphalt / Aggregate / Soil Stabilization with Cement (6-8 inch.)
- Overlay Intermediate Mix Asphalt
- Overlay Surface Mix Asphalt



SCHEDULE FOR PAVING PLANNING/IMPLEMENTATION

January-February

Bids are received for current calendar year schedules, contracts are executed. Next calendar year schedules are in planning stages.

March-April

Work begins on current calendar year schedules when weather is warm enough. Next calendar year schedules are being reviewed and further data gathered.

May-October

Current year schedules are underway. Next calendar year schedules are coordinated and sent to Richmond to prepare for contract advertisement.

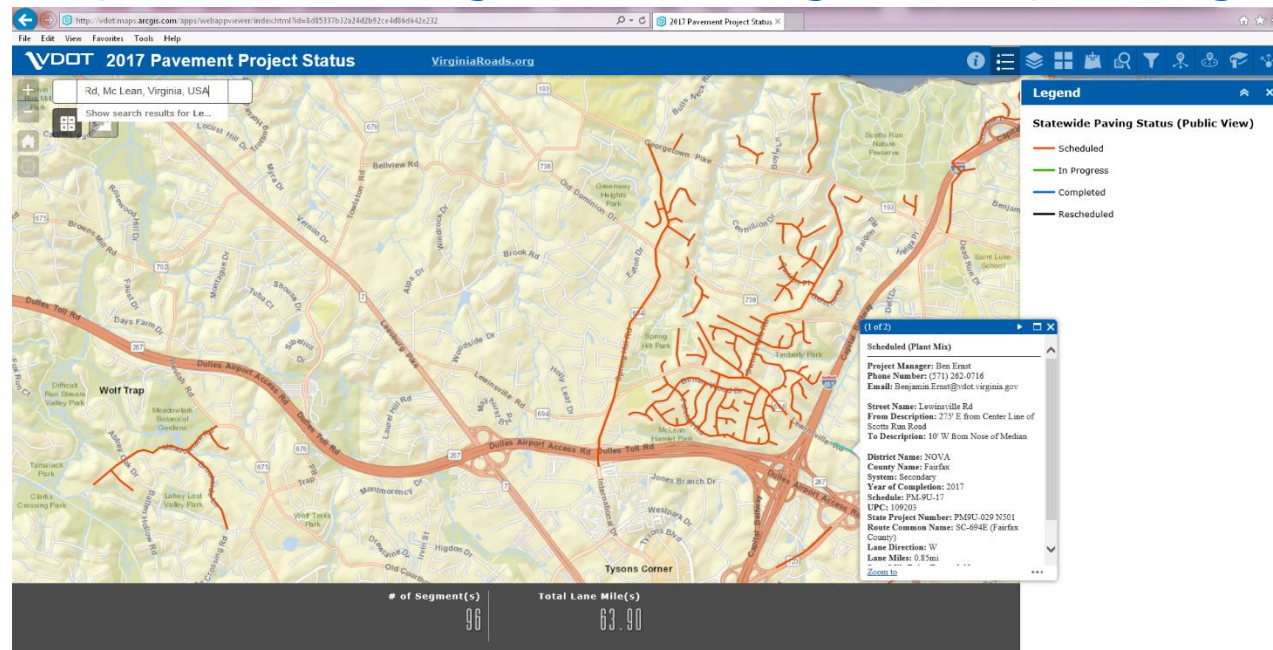
November-December

Current year schedules close out. Next year contracts are advertised for bids.



ONLINE PAVING MAP

<http://www.virginiadot.org/novapaving>



PAVING INFORMATION ONLINE

- Online paving map located at <http://www.virginiadot.org/novapaving>
- Virginia Roads pavement condition information located at <http://www.virginiaroads.org>
- MyVDOT (<https://my.vdot.virginia.gov>) or call 1-800-FOR-ROAD (367-7623) for maintenance requests



Mount Vernon District Proposed Striping Modifications

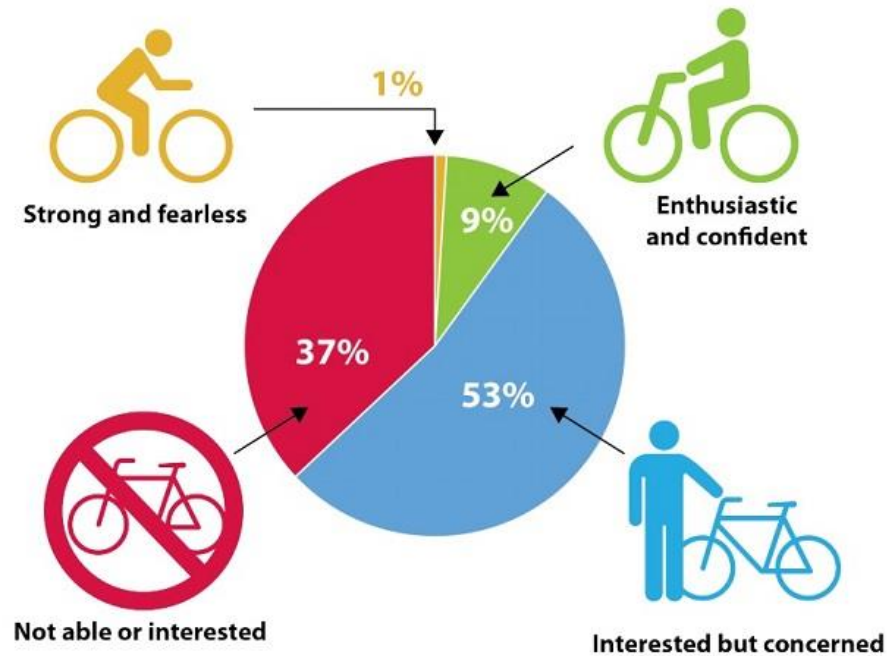


FAIRFAX COUNTY COMPREHENSIVE PLAN

- Seeks to improve traffic safety and provide transportation options to people around the County
- [Bicycle Network Plan](#): Establishes key bike route network and suggests type of bicycle facility
- Safer/more comfortable facility type can be implemented if space allows
- Routes can be added to connect destinations/origins to the bike network
- Implementation Options (if no road widening needed):
 - Capital Projects (\$\$\$)
 - Through Paving & Restriping Process (\$)



TYPES OF BICYCLE RIDERS IN FAIRFAX COUNTY



TYPES OF BICYCLE FACILITIES IN FAIRFAX COUNTY



SHARED LANE MARKING (SHARROW)

Shared lane markings indicate a shared travel lane for bicycles and cars.



Motorists may legally cross the double yellow line in order to safely pass a person riding a bicycle, as long as the oncoming lane is clear.



STANDARD BIKE LANE

Bike lanes give bicycles and cars their own spaces, making it safer to pass legally.



BUFFERED BIKE LANE

Buffered bike lanes provide additional space between bicycles and cars. The extra space makes both cycling and driving more comfortable.

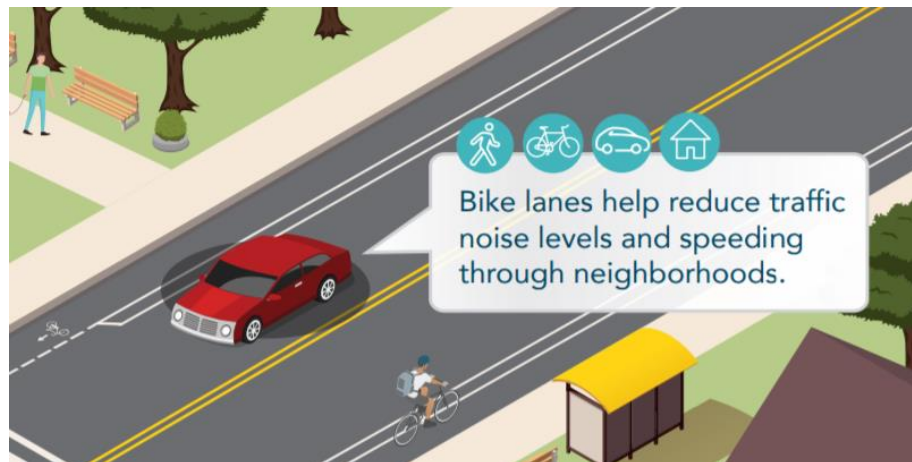


SEPARATED BIKE LANE

Separated bike lanes are divided from regular travel lanes by physical barriers.



BENEFITS OF BICYCLE INFRASTRUCTURE



THE TRAFFIC CALMING EFFECT

Annandale Road

BEFORE



Speeding Concerns

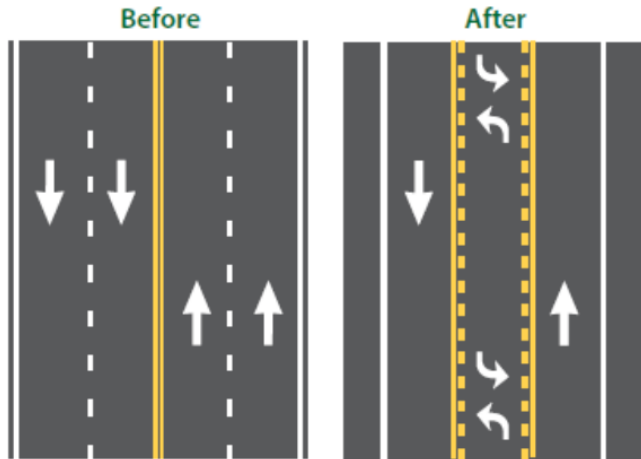
AFTER



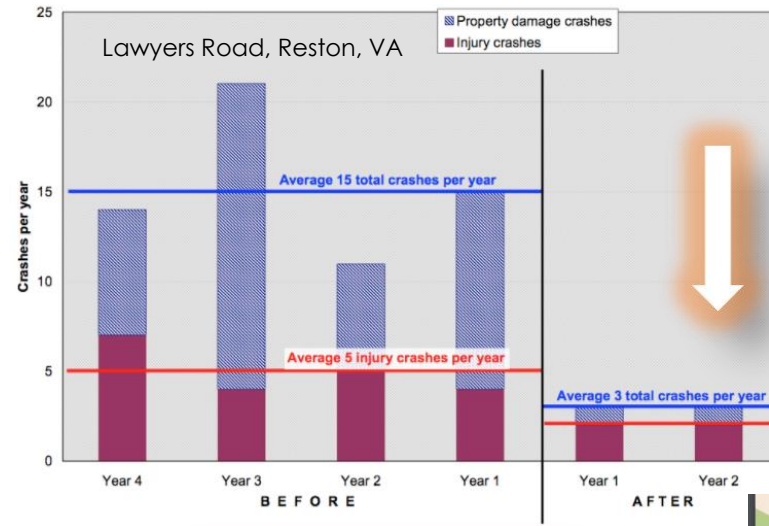
Top speeds virtually eliminated



ROAD REDESIGN – IMPROVING ROAD SAFETY FOR PEOPLE DRIVING, WALKING & BIKING



Only implemented on roads with low to medium traffic volumes (current and projected) and excess capacity.



Crash Reduction

Speeding Reduction

Decrease in Top-End Speeders

Location	Speed	Decrease
Stone Way, Seattle, WA	10+ mph	80%
Nickerson St, Seattle, WA	10+ mph	94%
Lawyers Rd, Reston, VA	5+ mph	90%

Source: FHWA



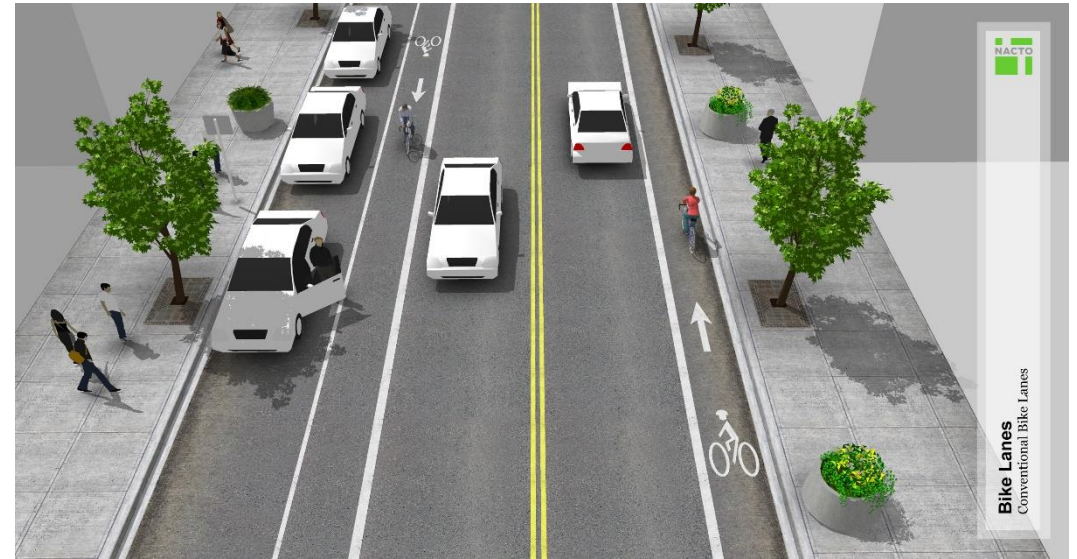
BOSTON BOULEVARD - EXISTING

- Two travel lanes, on street parking on the north side
- Sidewalk on north side
- No bike facilities



BOSTON BOULEVARD - PROPOSED

- Add bike lanes in both directions
- Maintain existing on-street parking



EDINBURGH DRIVE - EXISTING

- Two wide travel lanes, on street parking on both sides, grass median
- No markings



EDINBURGH DRIVE- PROPOSED

- Stripe a parking lane to visually narrow the travel lane
- Add a yellow shy line along median



Photo: Hinson Farm Road (without bike lanes)

FULLERTON ROAD - EXISTING

- Between Rolling Road and Boston Boulevard
- Two travel lanes between Yarnwood Court and Rolling Road, no on street parking
- Four travel lanes between Yarnwood Court and Boston Boulevard, no on street parking
- Sidewalks
- No bike facilities, very low cycling comfort



FULLERTON ROAD - PROPOSED

- Redesign the road between Rolling Road and Boston Boulevard with a center turn lane, two travel lanes and bike lanes



Photo: Colts Neck Road



LORTON STATION BOULEVARD - EXISTING

- Four travel lanes, dedicated turn lanes, median, limited on-street parking near VRE station
- Sidewalks
- No bike facilities



LORTON STATION BOULEVARD - PROPOSED

- Option 1: Convert outside travel lanes into buffered bike lanes
- Option 2: Convert outside travel lanes into on-street parking and a bike lane
- Option 3: Combination - add parking lane and bike lane where desired, install buffered bike lane where parking is not desired



Photo: South Lakes Drive



Photo: Hudson Farm Road



NORTHUMBERLAND ROAD- EXISTING

- Two travel lanes, no median, on-street parking on both sides
- Sidewalks
- No bike facilities



NORTHUMBERLAND ROAD - PROPOSED

- Maintain on-street parking on both sides where needed (based on community feedback), add shared lane markings
- Remove parking on one side where it's not needed, stripe bike lanes in both directions



VERNON VIEW DRIVE - EXISTING

- Between Bushrod Road and Teresa Ann Court
- Two travel lanes, no median, on-street parking on both sides
- Northbound travel lane is excessively wide



VERNON VIEW DRIVE - PROPOSED

- Center double yellow
- Stripe northbound parking lane
- Widen southbound parking lane



Photo: North Shore Drive



PEDESTRIAN SAFETY

Opportunity to review

- Study busy pedestrian crossing locations without crosswalk markings
- Upgrade existing crosswalk striping
- Improve unsafe crosswalks



COMMUNITY FEEDBACK

- **Paving-related comments** (e.g., drainage issues, missing signage, signal repair, walkway repair and sight distance issues due to vegetation overgrowth) should be submitted through the myVDOT portal: <https://my.vdot.virginia.gov/>. If you would like to request road repairs, please follow the "I need a road repaired" link on the VDOT portal or call 1-800-FOR-ROAD (1-800-367-7623).

Unfortunately, no additional roads can be added to the preliminary 2019 paving schedule at this point.

- **Striping-related comments** (e.g., marked parking lanes, crosswalks, and/or sight distance issues due to parked vehicles) can be submitted [electronically](#) to FCDOT.

Comments due by April 11, 2019



Thank you!

Questions/Comments?

